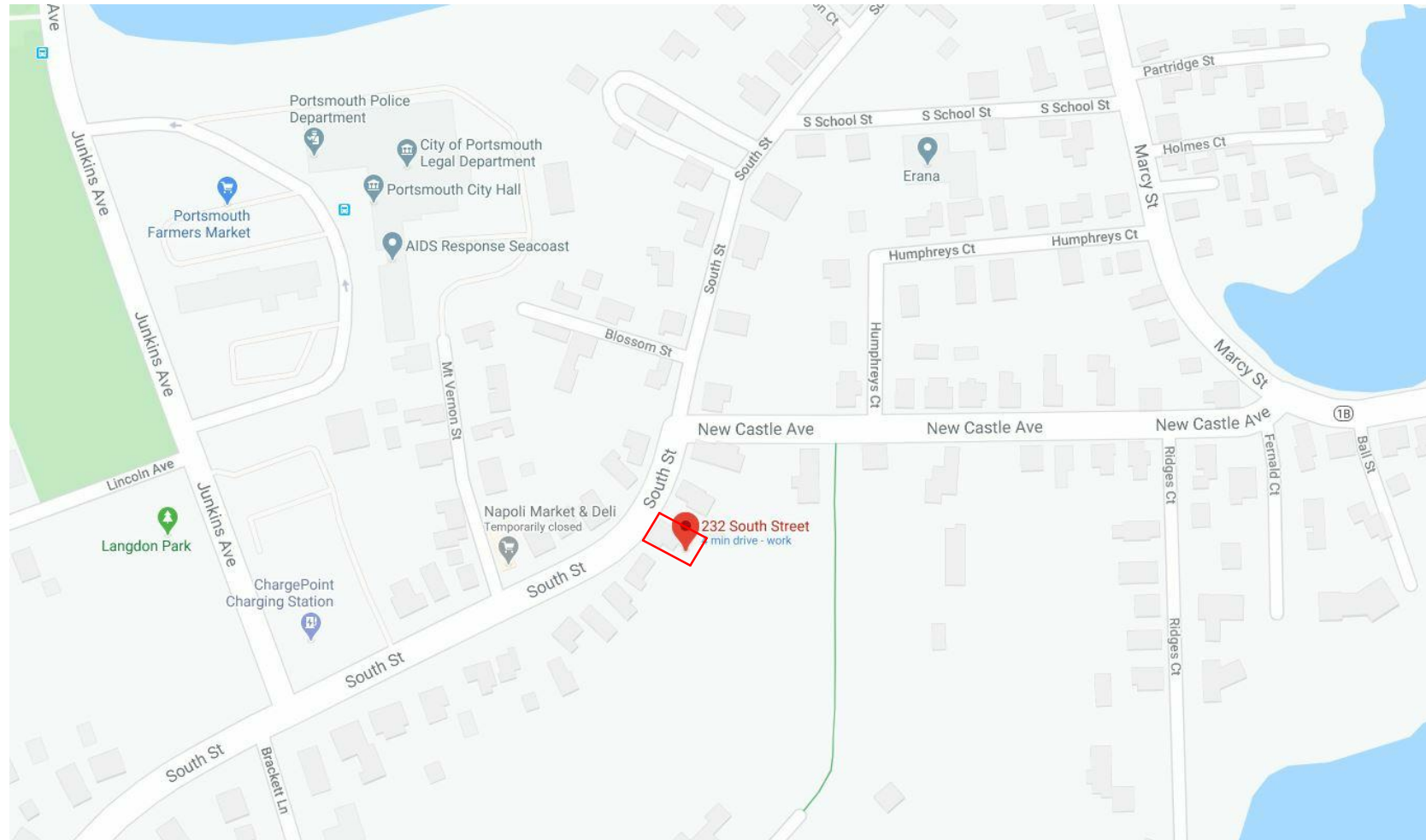


PORTSMOUTH HISTORIC DISTRICT COMMISSION WORK SESSION FOR IMPROVEMENTS 232 SOUTH STREET, PORTSMOUTH, NH



LOCUS MAP



EXISTING VIEW FROM SOUTH STREET



PROPOSED VIEW FROM SOUTH STREET

SCOPE:

RENOVATION TO THE EXISTING 1,181 S.F. FOOTPRINT: NEW SIDING, NEW TRIM, NEW ROOF, NEW WINDOWS, NEW GRANITE STEPS. 340 S.F. ADDITION TO REAR OF EXISTING BUILDING.



VIEW FROM SOUTH STREET



VIEW FROM BACKYARD



PARTIAL VIEW FROM NORTH ELEVATION



PARTIAL VIEW OF NORTH ELEVATION



PARTIAL VIEW OF NORTH ELEVATION



PARTIAL VIEW OF SOUTH ELEVATION



PARTIAL VIEW OF SOUTH ELEVATION

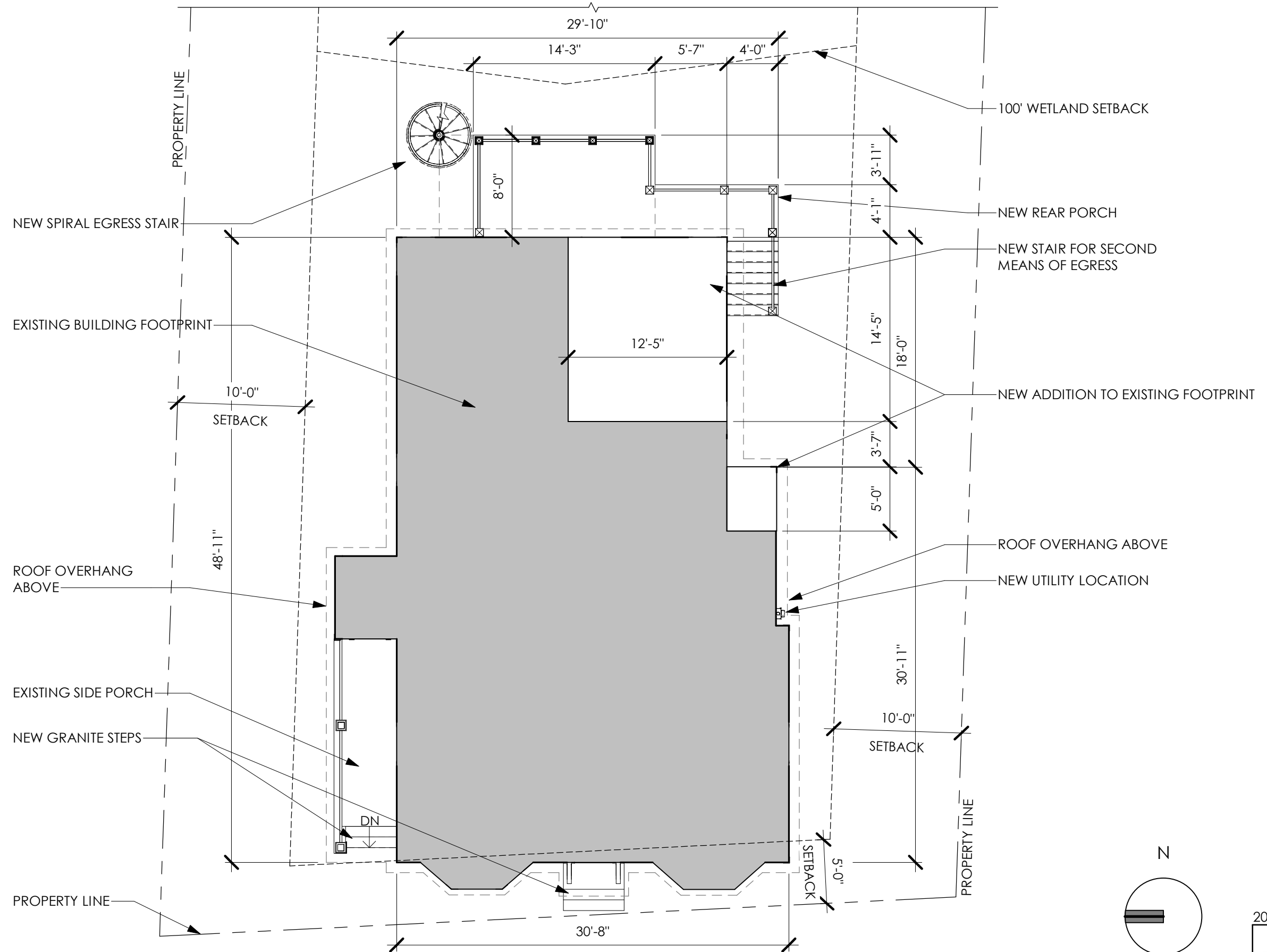
232 SOUTH STREET
PORTSMOUTH, NH

EXISTING PHOTOS

SHEET 2 OF 8
AUGUST 19, 2020

2020
D|M|A
DESTEFANO
MAUGEL
ARCHITECTS

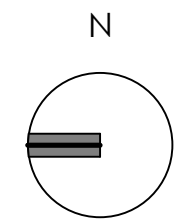
© 2020



232 SOUTH STREET
PORTSMOUTH, NH

EXISTING/PROPOSED PLAN
1/8" = 1'-0"

SHEET **3** OF 8
AUGUST 19, 2020



202020

D|M|A
DESTEFANO
MAUGEL
ARCHITECTS

© 2020



EXISTING WEST ELEVATION 2
 1/8" = 1'-0"



EXISTING NORTH ELEVATION 1
 1/8" = 1'-0"

232 SOUTH STREET
 PORTSMOUTH, NH

EXISTING ELEVATIONS
 1/8" = 1'-0"

SHEET 4 OF 8
 AUGUST 19, 2020

202020

D|M|A
 DESTEFANO
 MAUGEL
 ARCHITECTS



EXISTING SOUTH ELEVATION (2)
1/8" = 1'-0"



EXISTING EAST ELEVATION (1)
1/8" = 1'-0"

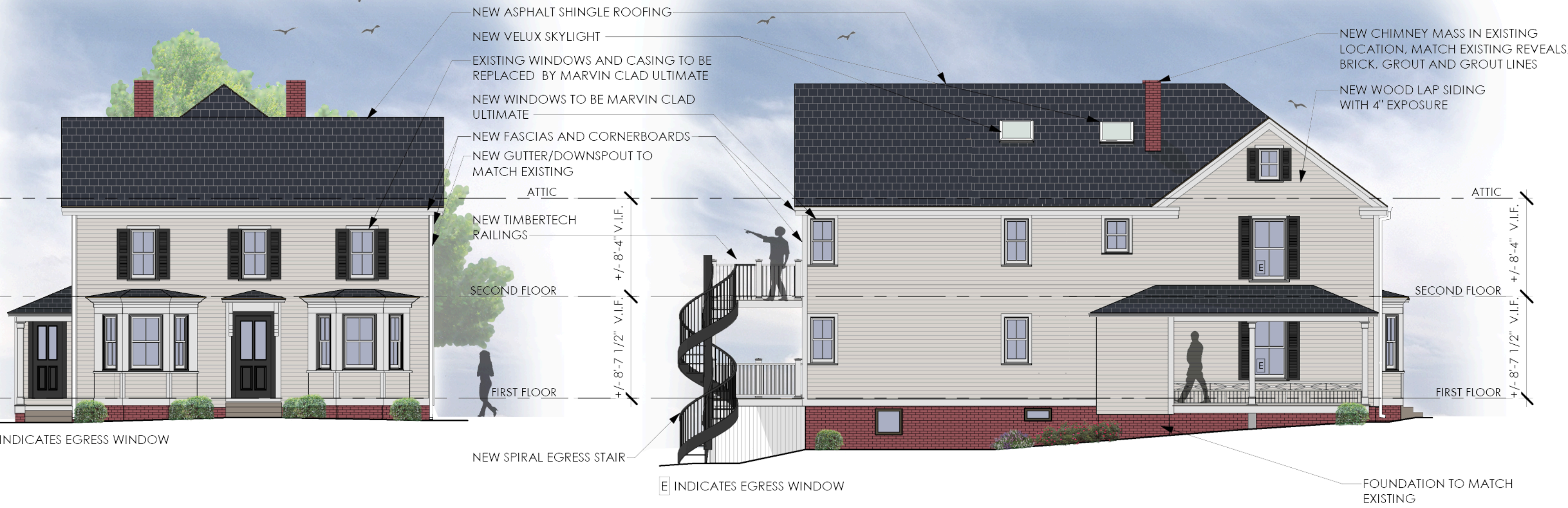
232 SOUTH STREET
PORTSMOUTH, NH

EXISTING ELEVATIONS
1/8" = 1'-0"

SHEET 5 OF 8
AUGUST 19, 2020

202020

D|M|A
DESTEFANO
MAUGEL
ARCHITECTS



PROPOSED WEST ELEVATION 2
 1/8" = 1'-0"

PROPOSED NORTH ELEVATION 1
 1/8" = 1'-0"

232 SOUTH STREET
 PORTSMOUTH, NH

PROPOSED ELEVATIONS
 1/8" = 1'-0"

SHEET **6** OF 8
 AUGUST 19, 2020

202020

D|M|A

DESTEFANO
 MAUGEL
 ARCHITECTS

© 2020



E INDICATES EGRESS WINDOW

NEW UTILITY LOCATION (TO BE COORDINATED)

NEW FALSE WINDOW, SHUTTERS AND CASING TO MATCH EXISTING

PROPOSED SOUTH ELEVATION 2
1/8" = 1'-0"

PROPOSED EAST ELEVATION 1
1/8" = 1'-0"

232 SOUTH STREET
PORTSMOUTH, NH

PROPOSED ELEVATIONS
1/8" = 1'-0"

SHEET 7 OF 8
AUGUST 19, 2020

202020

D|M|A
DESTEFANO
MAUGEL
ARCHITECTS



PROPOSED FRONT PERSPECTIVE

2



PROPOSED REAR PERSPECTIVE

1

232 SOUTH STREET
PORTSMOUTH, NH

PROPOSED PERSPECTIVES

SHEET **8** OF 8
AUGUST 19, 2020

202020
D|M|A
DESTEFANO
MAUGEL
ARCHITECTS

© 2020