



53 GREEN STREET
PORTSMOUTH, NEW HAMPSHIRE

AERIAL VIEW OF
SITE AND SURROUNDINGS
HISTORIC DISTRICT COMMISSION WORK SESSION 3 : MAY 6, 2020



1.0



233 VAUGHAN STREET

53-57 GREEN STREET

A. GREEN STREET VIEW



53-57 GREEN STREET

3S ARTSPACE

1 RAYNES AVE.

B. NORTH MILL POND VIEW



VIEW FROM VAUGHAN STREET

1



VIEW TO NORTH MILL POND

2



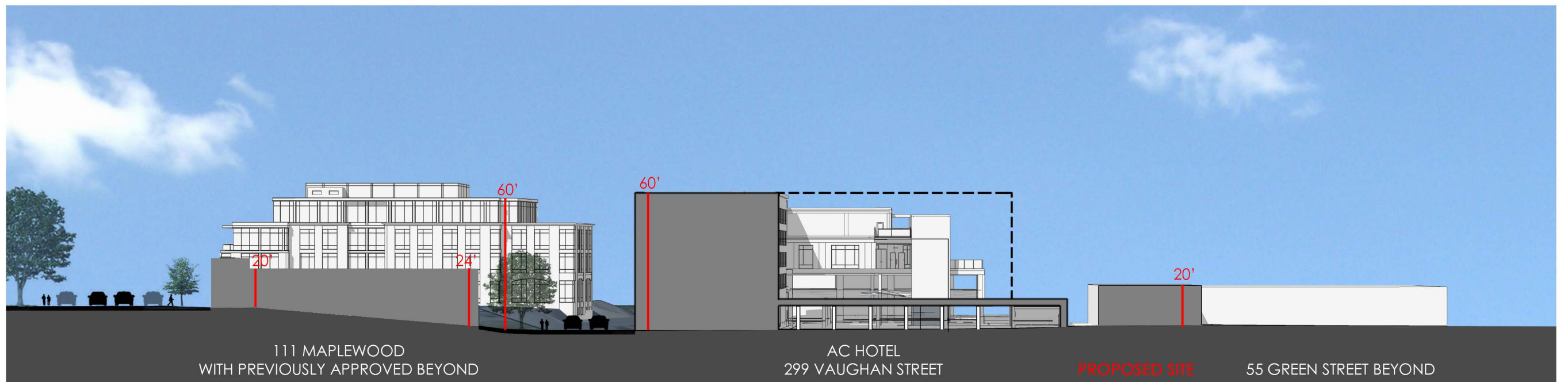
VIEW FROM GREEN STREET

3

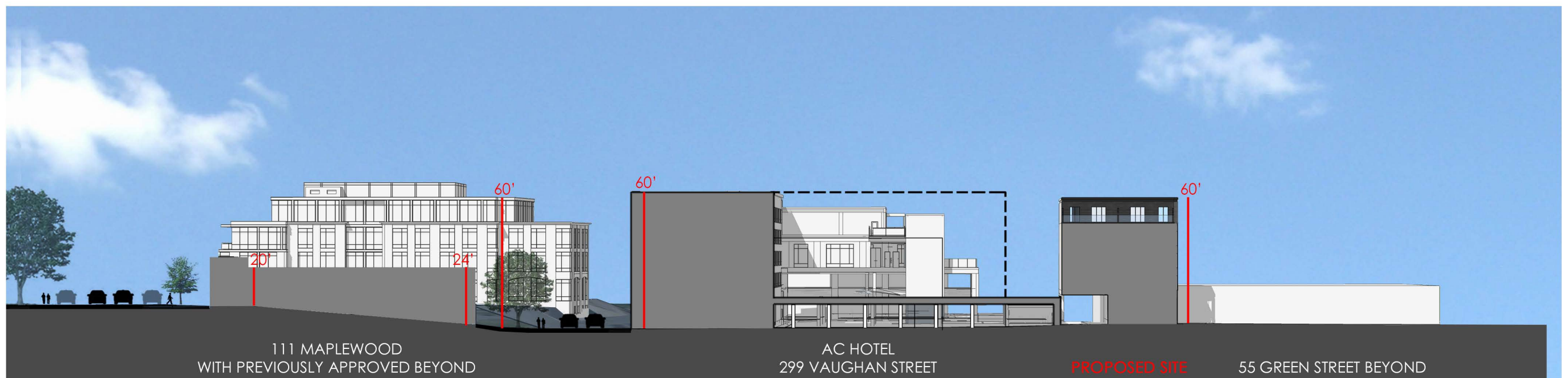


VIEW FROM RUSSEL STREET

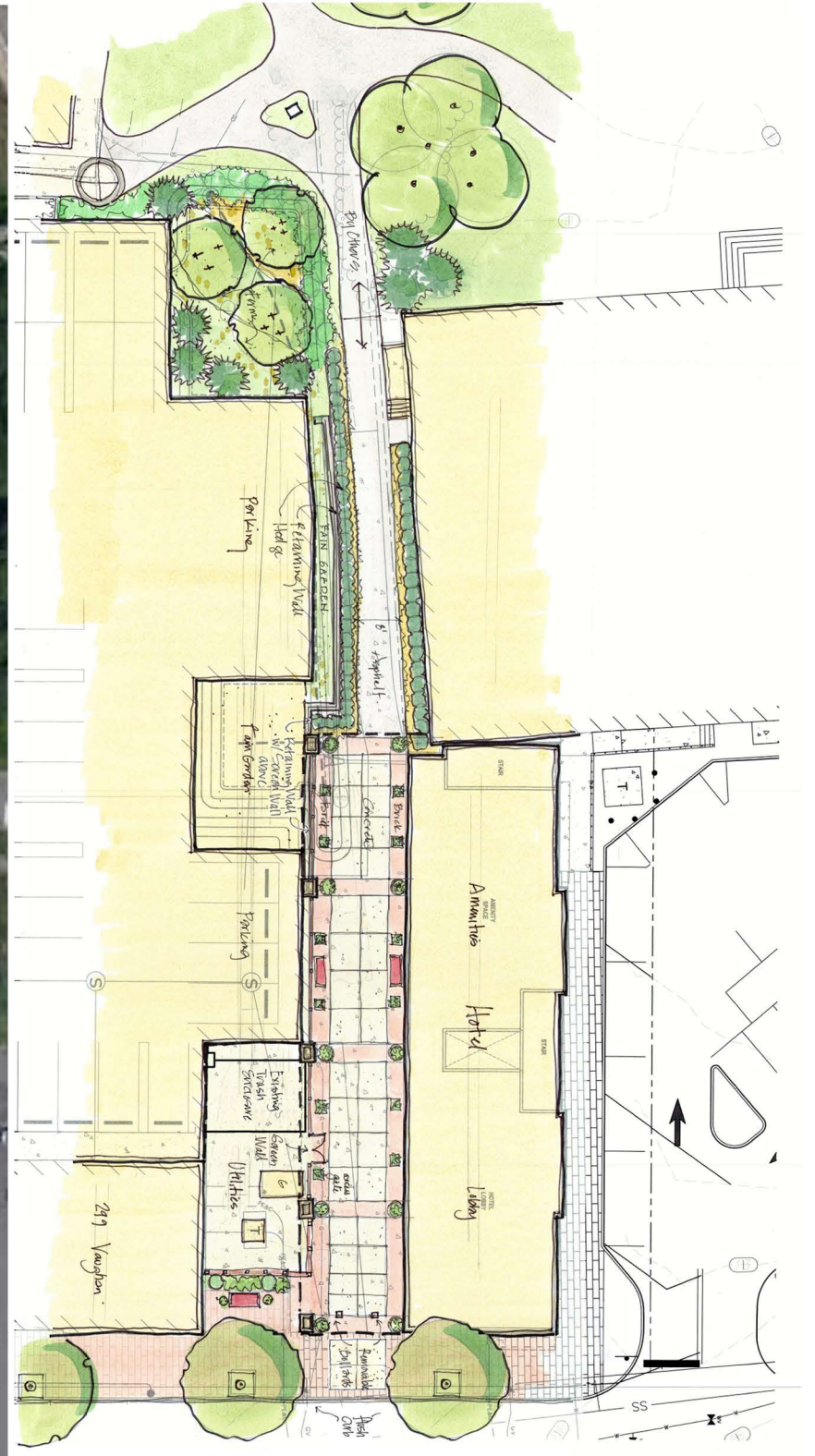
4



EXISTING SITE SECTION AA - TRANSVERSE LOOKING WEST



PROPOSED SITE SECTION AA - TRANSVERSE LOOKING WEST



LANDSCAPE DETAIL



53 GREEN STREET
PORTSMOUTH, NEW HAMPSHIRE

PROPOSED
SITE PLAN
HISTORIC DISTRICT COMMISSION WORK SESSION 3: MAY 6, 2020



4.0



53 GREEN STREET
PORTSMOUTH, NEW HAMPSHIRE

PROPOSED MASSING
VIEW FROM NORTH MILL POND
HISTORIC DISTRICT COMMISSION WORK SESSION 3: MAY 6, 2020



5.0



53 GREEN STREET
PORTSMOUTH, NEW HAMPSHIRE

PROPOSED MASSING
VIEW FROM MARKET & RUSSELL STREETS
HISTORIC DISTRICT COMMISSION WORK SESSION 3: MAY 6, 2020



5.1



53 GREEN STREET
PORTSMOUTH, NEW HAMPSHIRE

PROPOSED MASSING
VIEW FROM RUSSELL STREET
HISTORIC DISTRICT COMMISSION WORK SESSION 3: MAY 6, 2020



5.2



53 GREEN STREET
PORTSMOUTH, NEW HAMPSHIRE

PROPOSED MASSING
VIEW FROM GREEN STREET
HISTORIC DISTRICT COMMISSION WORK SESSION 3: MAY 6, 2020



CATHARTES

5.3



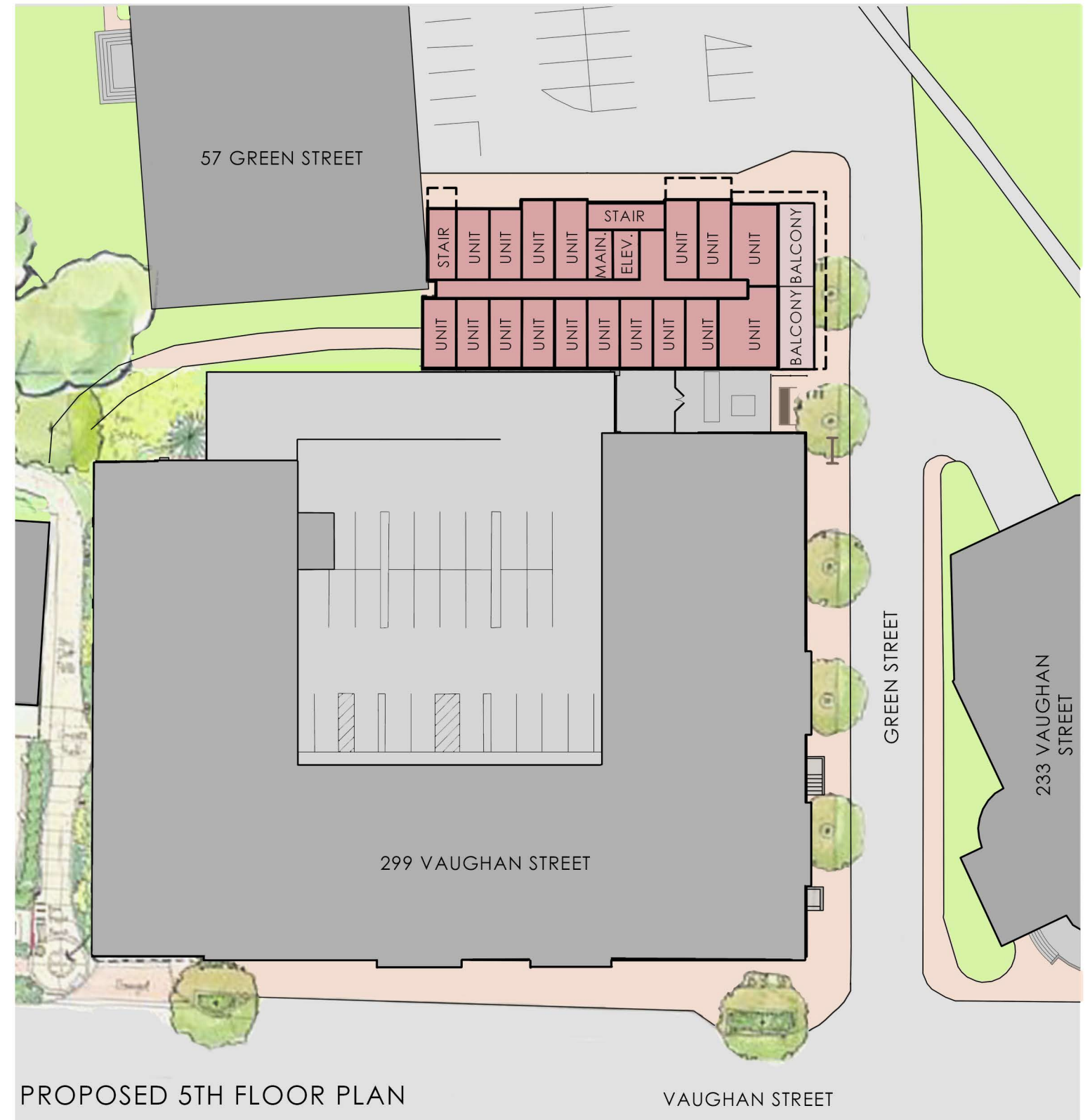
NOT TO SCALE

53 GREEN STREET
PORTSMOUTH, NEW HAMPSHIRE

MOXY HOTEL
PROPOSED FLOOR PLANS
HISTORIC DISTRICT COMMISSION WORK SESSION 3: MAY 6, 2020



6.0



NOT TO SCALE

53 GREEN STREET
PORTSMOUTH, NEW HAMPSHIRE

MOXY HOTEL
PROPOSED FLOOR PLANS
HISTORIC DISTRICT COMMISSION WORK SESSION 3: MAY 6, 2020



6.1



GREEN STREET VIEW FROM VAUGHAN STREET



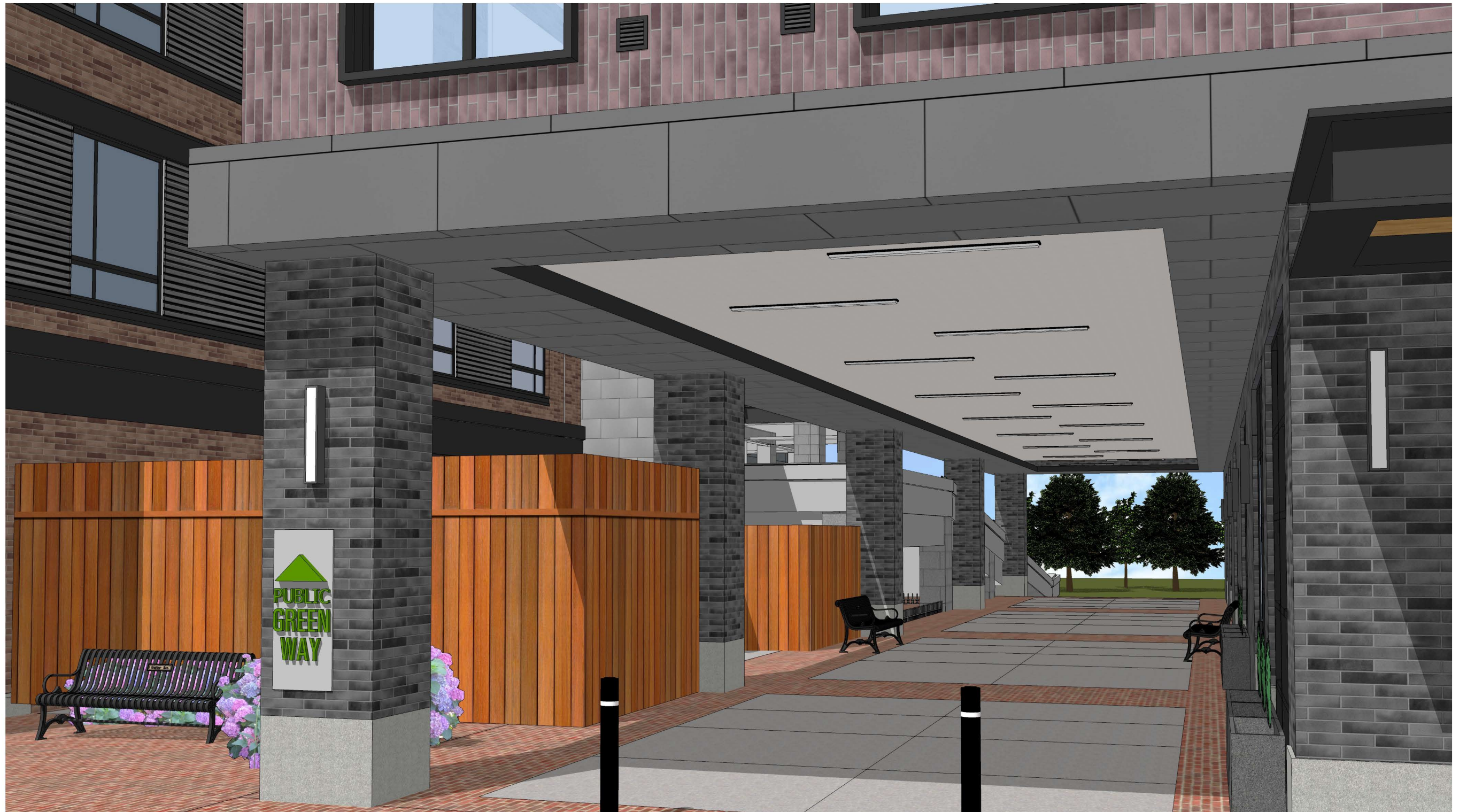
GREEN STREET VIEW FROM RUSSELL STREET



VIEW FROM GREEN STREET



FRONT ELEVATION VIEW



VIEW TO NORTH MILL POND

53 GREEN STREET
PORTSMOUTH, NEW HAMPSHIRE

PROPOSED VIEW OF
PEDESTRIAN ACCESS
HISTORIC DISTRICT COMMISSION WORK SESSION 3: MAY 6, 2020



7.1



VIEW TO NORTH MILL POND

53 GREEN STREET
PORTSMOUTH, NEW HAMPSHIRE

PROPOSED VIEW OF
PEDESTRIAN ACCESS
HISTORIC DISTRICT COMMISSION WORK SESSION 3: MAY 6, 2020

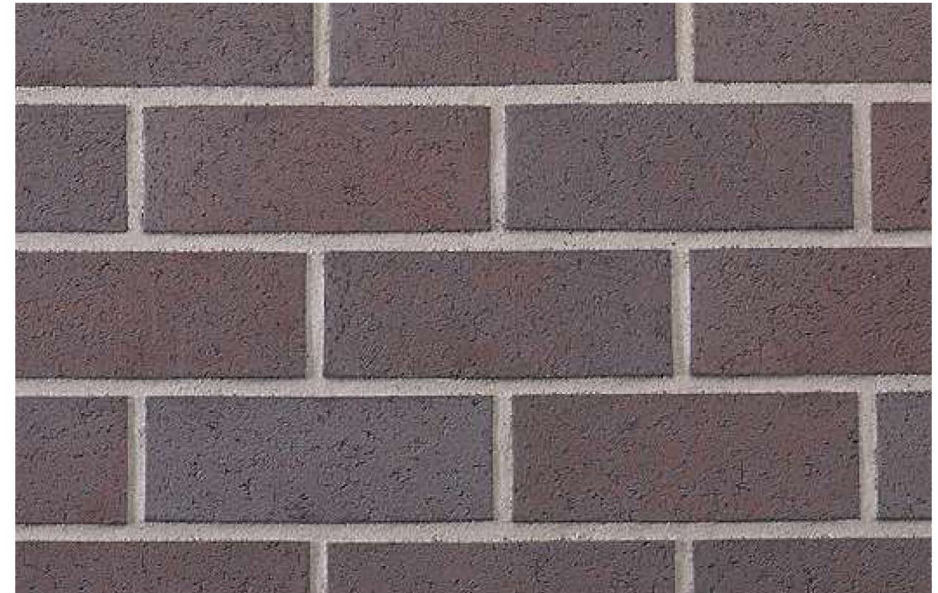


7.2



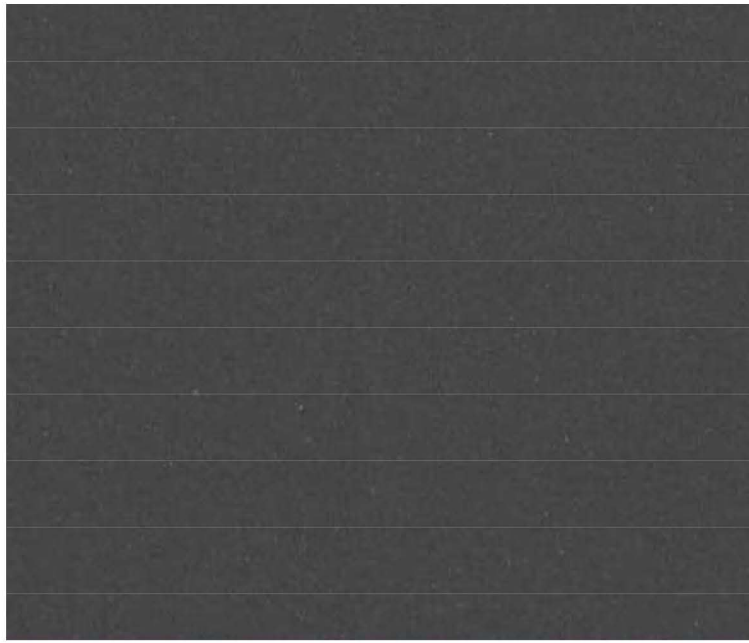
BRICK 1

Manufacturer: ENDICOTT BRICK
Color: MANGANESE IRONSPOT
Specific Instructions: ACCENT BOND



BRCK 2

Manufacturer: BELDEN BRICK COMPANY
Color: BRANDYWINE
Specific Instructions: RUNNING BOND



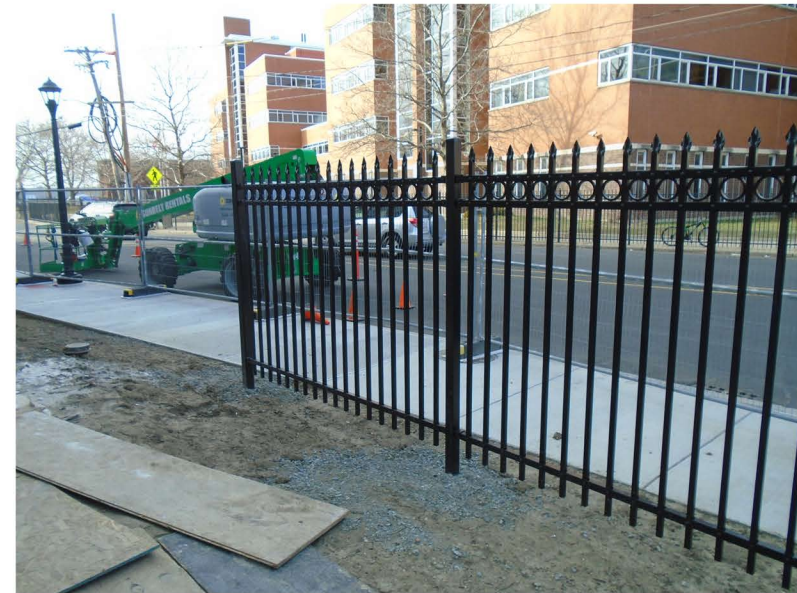
ALUMINUM COMPOSITE MATERIAL (ACM 1)

Manufacturer: ALUCOBOND
 Color: GRAPHITE MICA
 Specific Instructions: N/A

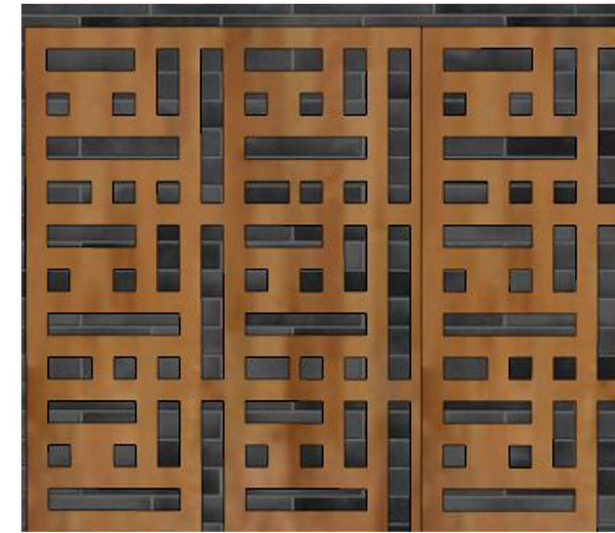


TEXTURED ALUMINUM COMPOSITE MATERIAL (ACM 2)

Manufacturer: VITRABOND
 Custom Color: FAUX ZINC CHARCOAL VB5260
 Specific Instructions: N/A



FENCING - MATCH EXISTING



WOOD TRELLIS



METAL TRIM

Manufacturer: TBD
Color: BLACK
Specific Instructions: N/A



GRANITE

Manufacturer: TBD
Color: NATURAL
Specific Instructions: N/A



ARCHITECTURAL CORRUGATED METAL

Manufacturer: CENTRIA CS-660 PREFINISHED PANEL
Color: TO MATCH ACM1
Specific Instructions: N/A



VINYL WINDOWS

Manufacturer: HARVEY WINDOWS
Color: BLACK
Specific Instructions: N/A



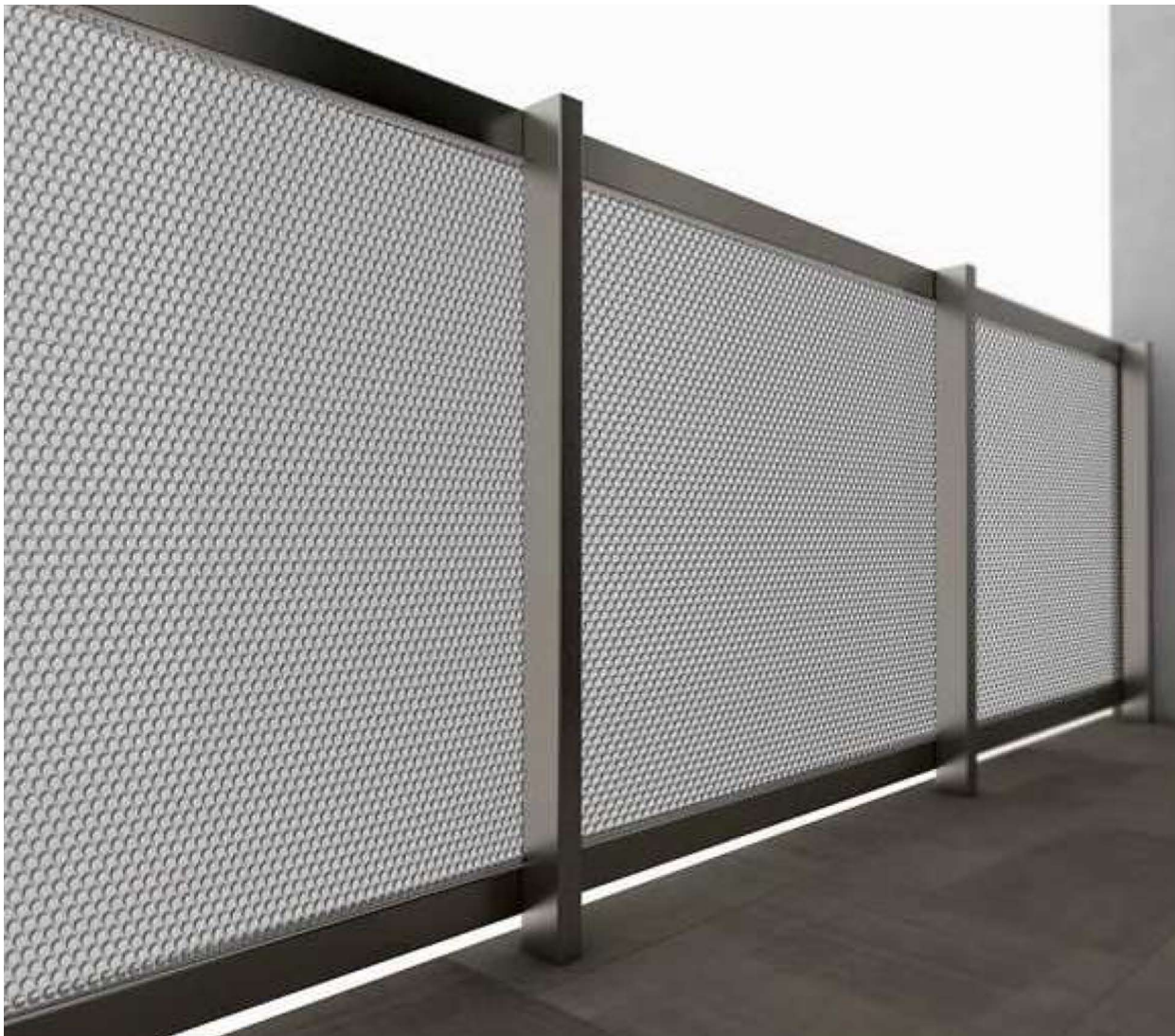
EXTERIOR WALL SCONCE

Manufacturer: TECH LIGHTING-
Product Name: ASPEN WEDGE 26
Color: CHARCOAL



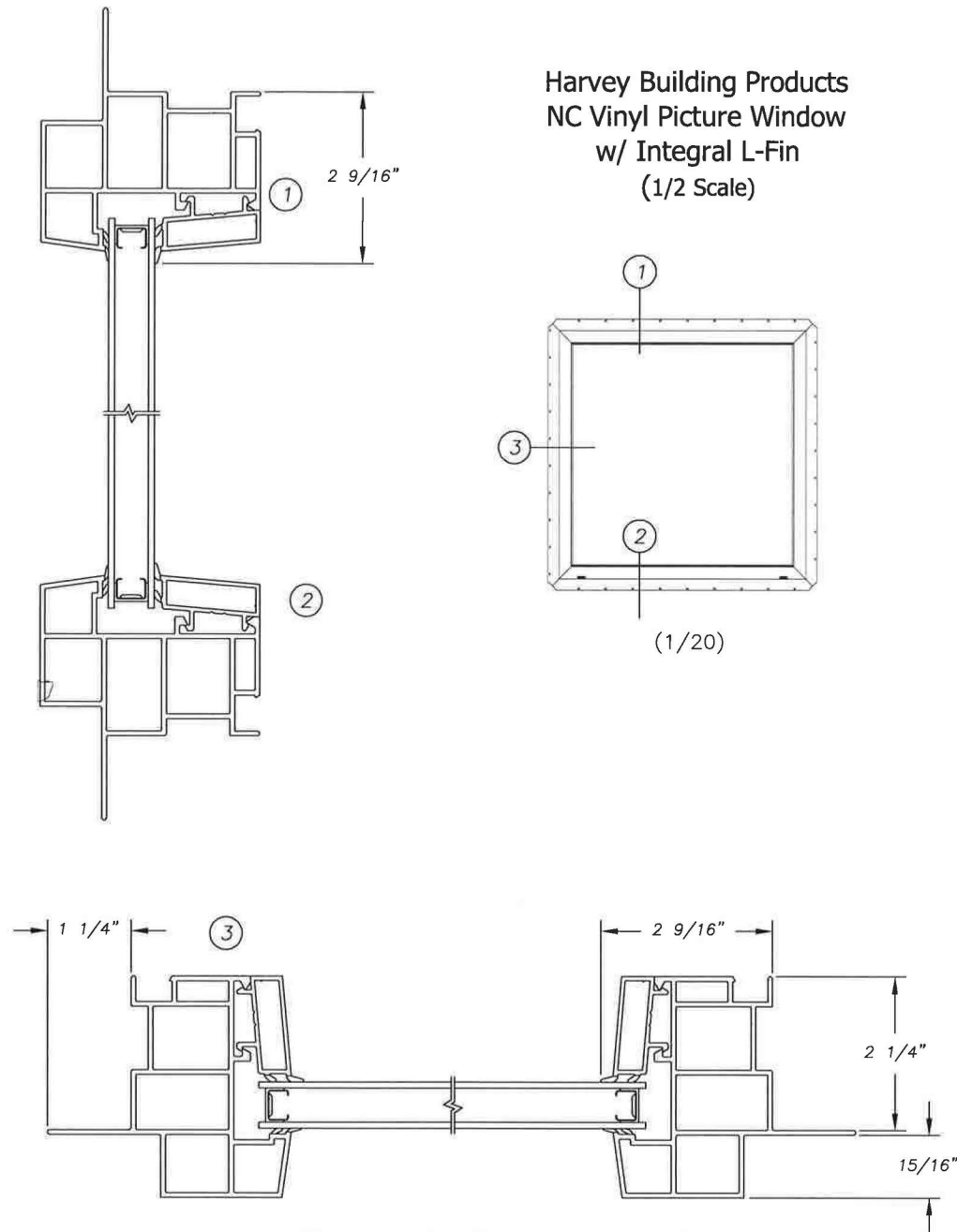
EXTERIOR CEILING - LINEAR LIGHTING

Manufacturer: WAC LIGHTING
Product Name: SYMMETRICAL RECESSED CHANNEL 8' LINEAR
Color: TBD



RAILINGS

Manufacturer: TBD
Product Name: Perforated Metal
Color: Color to Match ACM1



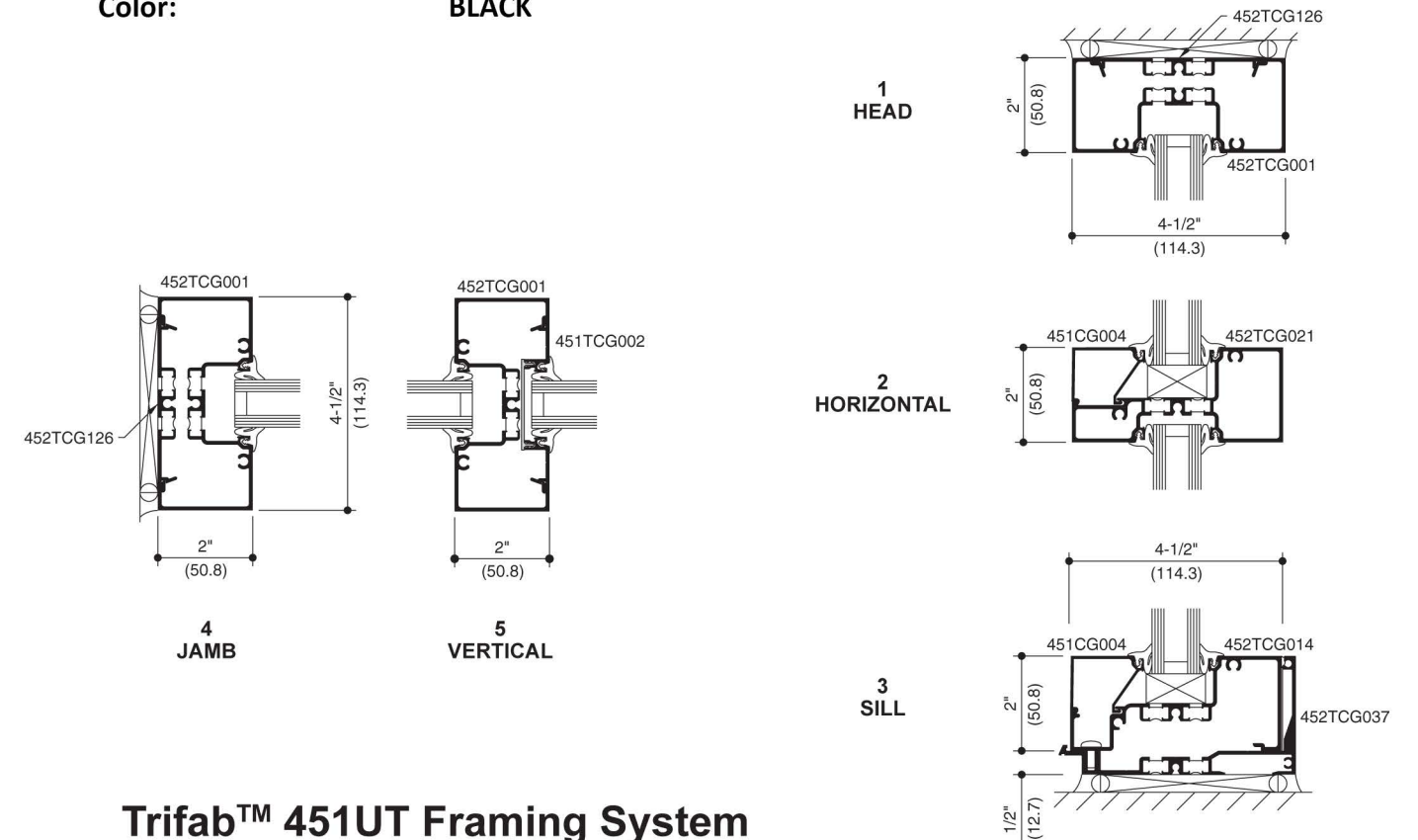
VINYL WINDOWS

Manufacturer: HARVEY WINDOWS
Color: BLACK



VERTICAL RETRACTABLE GLASS DOORS/WINDOWS

Manufacturer: TBD
Color: BLACK



Trifab™ 451UT Framing System



STOREFRONT

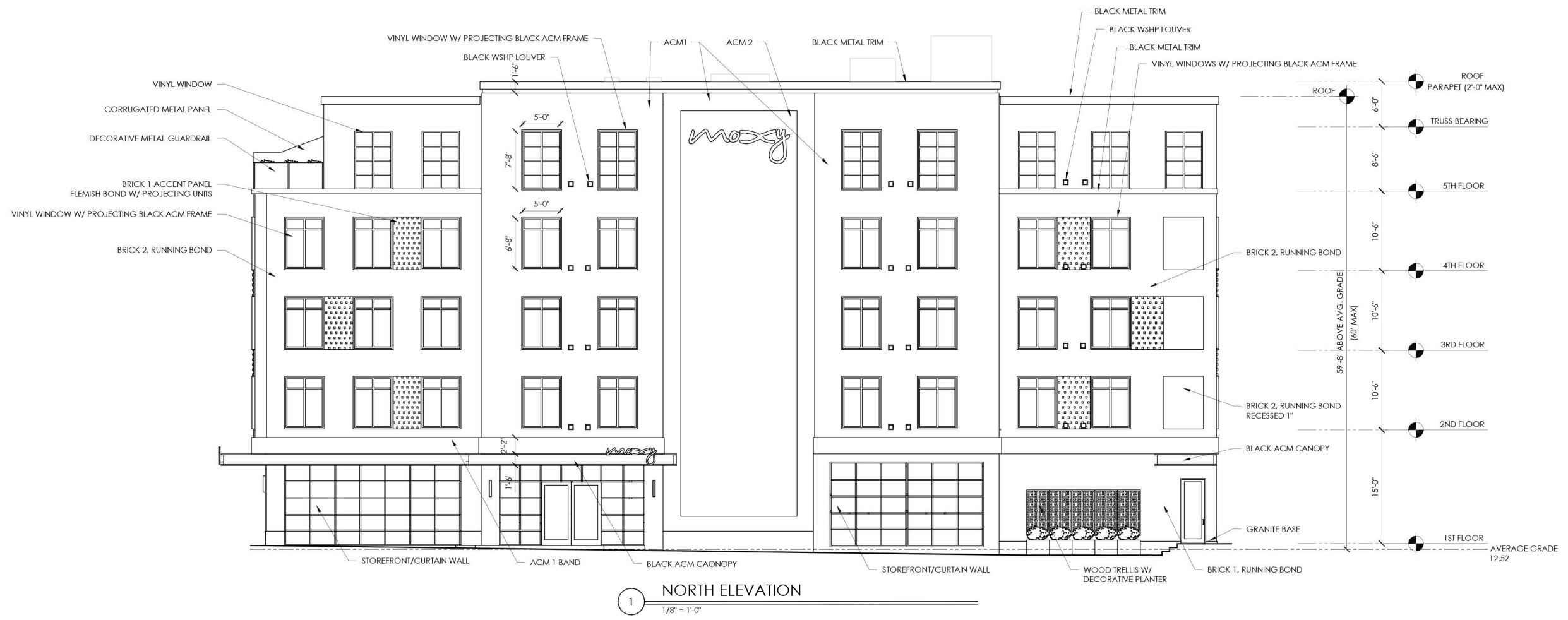
Manufacturer: KAWNEER
Color: BLACK

53 GREEN STREET
PORTSMOUTH, NEW HAMPSHIRE

PROPOSED WINDOWS
AND STOREFRONT
HISTORIC DISTRICT COMMISSION WORK SESSION 3: MAY 6, 2020



8.4

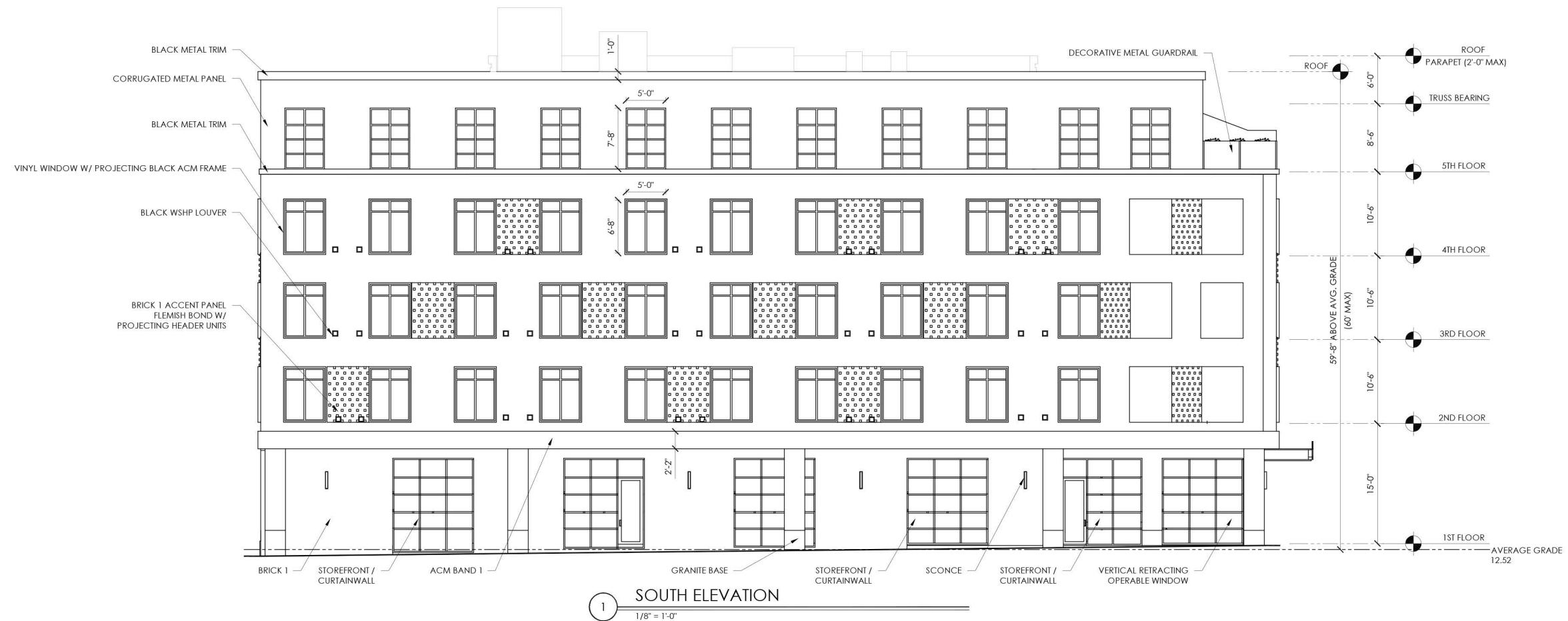


53 GREEN STREET
PORTSMOUTH, NEW HAMPSHIRE

PROPOSED NORTH ELEVATION
HISTORIC DISTRICT COMMISSION WORK SESSION 3: MAY 6, 2020



9.0



53 GREEN STREET
PORTSMOUTH, NEW HAMPSHIRE

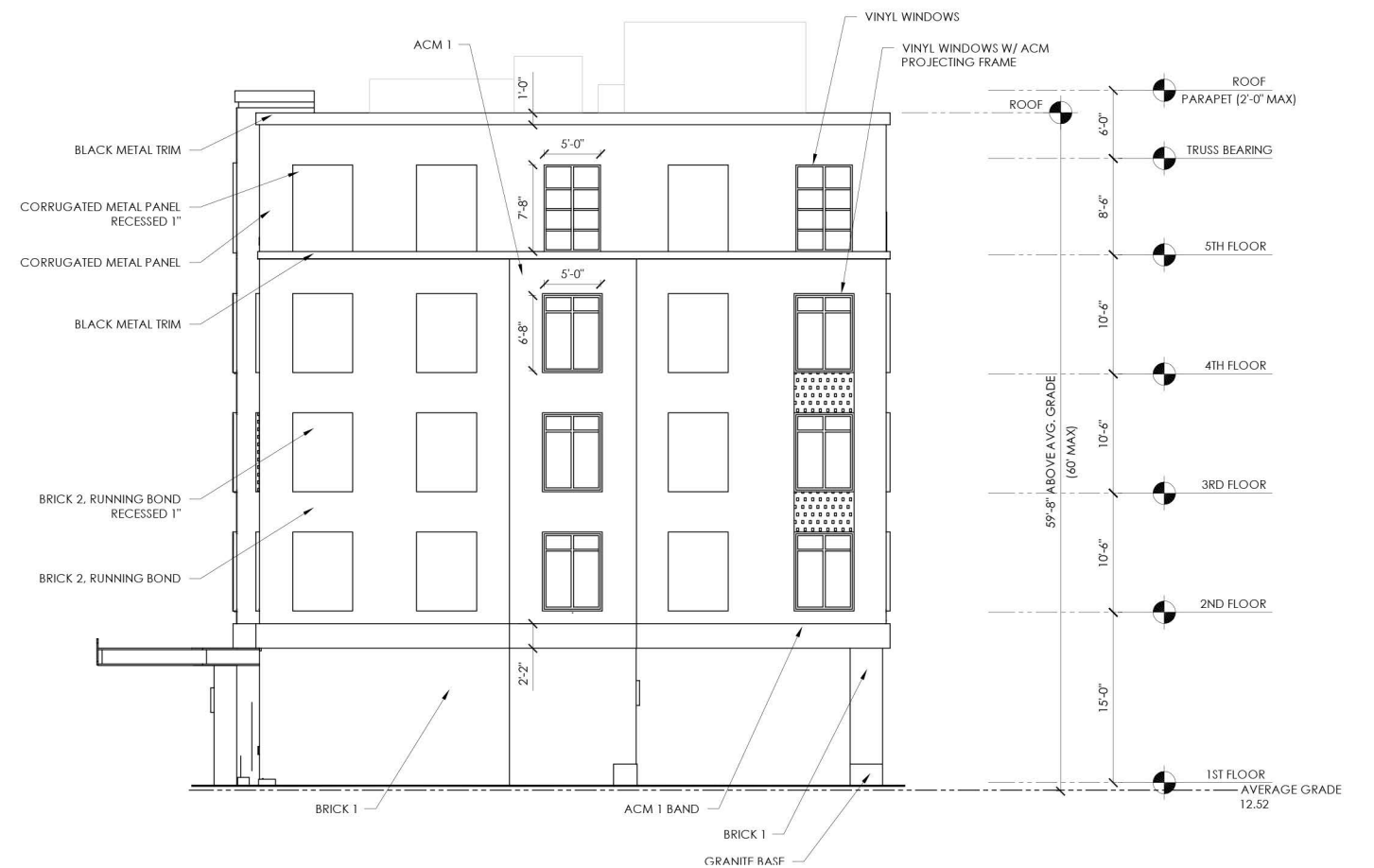
PROPOSED SOUTH ELEVATION
HISTORIC DISTRICT COMMISSION WORK SESSION 3: MAY 6, 2020



9.1



1 EAST ELEVATION
1/8" = 1'-0"



2 WEST ELEVATION
1/8" = 1'-0"

53 GREEN STREET
PORTSMOUTH, NEW HAMPSHIRE

PROPOSED EAST AND WEST
ELEVATIONS
HISTORIC DISTRICT COMMISSION WORK SESSION 3: MAY 6, 2020



9.2



AC HOTEL - MEDFORD, MA

53 GREEN STREET
PORTSMOUTH, NEW HAMPSHIRE

PRECEDENT IMAGERY

HISTORIC DISTRICT COMMISSION WORK SESSION 3: MAY 6, 2020



10.0