

PORTSMOUTH

Bicycle and Pedestrian Plan

May 28, 2024



AGENDA

- **Introductions**
- **Planning Process Overview**
- **Schedule**
- **Upcoming Engagement and Next Steps**
- **Discussion**
- **Tour**



CONTACTS

City of Portsmouth Points of Contact

Jillian Harris, Principal Planner

Planning and Sustainability Department

jharris@cityofportsmouth.com

Eric Eby, City Engineer

Department of Public Works

ebeby@cityofportsmouth.com



Project Team Points of Contact (Kittelson & Associates, Inc.)

Liz Flanagan, Senior Planner

eflanagan@kittelson.com

Megan Mello, Planner

mmello@kittelson.com

Juliet Walker, Principal Planner

jwalker@kittelson.com

INTRODUCTIONS

Please share your:

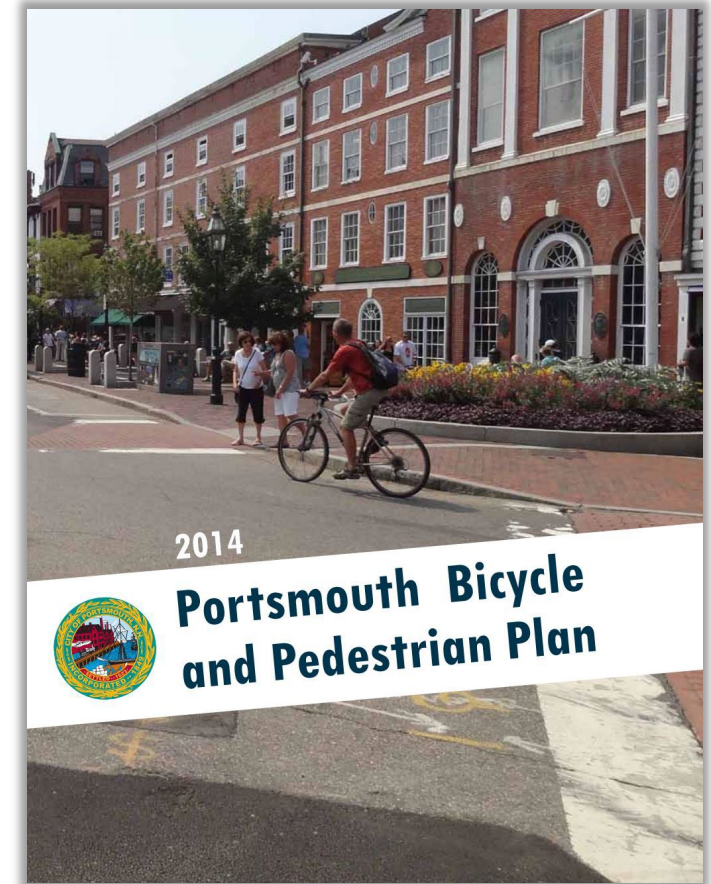
- Name
- Title
- Affiliation



PLANNING PROCESS OVERVIEW

Progress has been made, but the state of practice has evolved.

- Expanded the bicycle network with new bike lanes/shared use paths on Market Street, Maplewood Avenue, Hodgdon Way, Middle Street, Gosling Road, Borthwick Avenue, portions of Route 1
- Improved pedestrian network along Islington Street, Market Street, Sagamore Avenue, Spinney Road, Pannaway Manor, Greenland Road/Borthwick Avenue, McDonough Street/Hanover Street neighborhood, lower State Street, Pleasant Street, Cutts Street, Woodbury Avenue retail area, Banfield Road
- Initiated project planning and design for Elwyn Road and Peverly Hill Road side paths
- Bicycle boulevard on Lincoln Avenue
- Began construction of Seacoast Greenway Trail



PLANNING PROCESS OVERVIEW



Engagement Process

Two phases of outreach to engage the public through a combination of online survey, two public meetings, pop-up events, and focus groups.



Existing Conditions

Review of existing walking/biking programs and policies, field visits, inventory of existing infrastructure, and analysis of where things stand today



Vision and Goals

Development of a vision statement and goals.

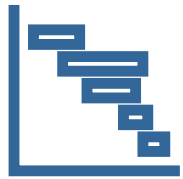


PLANNING PROCESS OVERVIEW



Opportunities & Constraints

Understanding of the network opportunities and constraints, document audit, and summary of policy and programming opportunities.



Recommendations

Prioritization criteria and assessment, updated design guidance, and program/policy/project recommendations



Implementation Program

Development of a final plan!



SCHEDULE

SPRING 2024



Existing Conditions Assessment

Gather data, confirm existing conditions, and conduct analysis to understand issues and opportunities related to walking and biking.



Online Public Input, Pop-Up Events, and Public Meeting #1

Learn about the plan's purpose, process, and expected outcomes. Provide feedback on the vision and goals of the plan. Help us pinpoint challenges you face and opportunities you see.

SUMMER 2024



Visioning and Network Updates

Develop a vision statement, update the walking and biking networks, and identify opportunities and constraints.



Focus Groups and Public Meeting #2

Provide feedback on the draft networks, inform the selection of prioritization criteria, and discuss trade-offs in decision-making.

FALL 2024



Develop Recommendations

Evaluate recommendations for improving walking and biking in Portsmouth.

WINTER 2024/25 AND BEYOND!



Plan Development and Documentation

Develop and publish the final plan. Begin to realize the envisioned networks.



Published Plan

Read the final plan!



OPPORTUNITIES FOR ENGAGEMENT


YOUR ROLE

- **You are our on-the-ground experts on biking and walking in Portsmouth**
 - Promote engagement opportunities within your networks
 - Attend and help facilitate engagement events
 - Vet existing conditions data and provide nuanced local knowledge
 - Guide the development of vision and goals
 - Provide feedback on draft plan deliverables
 - Attend and participate in 3 meetings



OPPORTUNITIES FOR ENGAGEMENT

- **Working Group Questionnaire**
- **Public Online Survey**
- **Pop-Up Meetings**
- **Public Meetings (2)**
- **Focus Groups**



Where and when should we host pop-up meetings?

Who should be engaged with a focus group discussion?



IMMEDIATE NEXT STEPS

- **Submit follow-up questionnaire by June 7th**
- **Help us spread the word about online survey over the summer**



DISCUSSION

- **What did you like about the last plan?**
- **What were some successes or wins that came out of the last plan?**
- **What would you do differently this time?**
- **Where might we adjust the recommendations that were suggested and/or implemented as a result of the last plan?**
- **What does a successful Bicycle and Pedestrian Master Plan look like to you?**



TOUR



- ★ **Pick-Up City Hall (5:30 PM)**
- ① **Maplewood Ave (5:40 PM)**
- ② **Market St (5:50 PM)**
- ③ **Woodbury Ave (6:00 PM)**
- ④ **Peverly Hill Rd (6:15 PM)**
- ★ **Drop-Off City Hall (6:30 PM)**