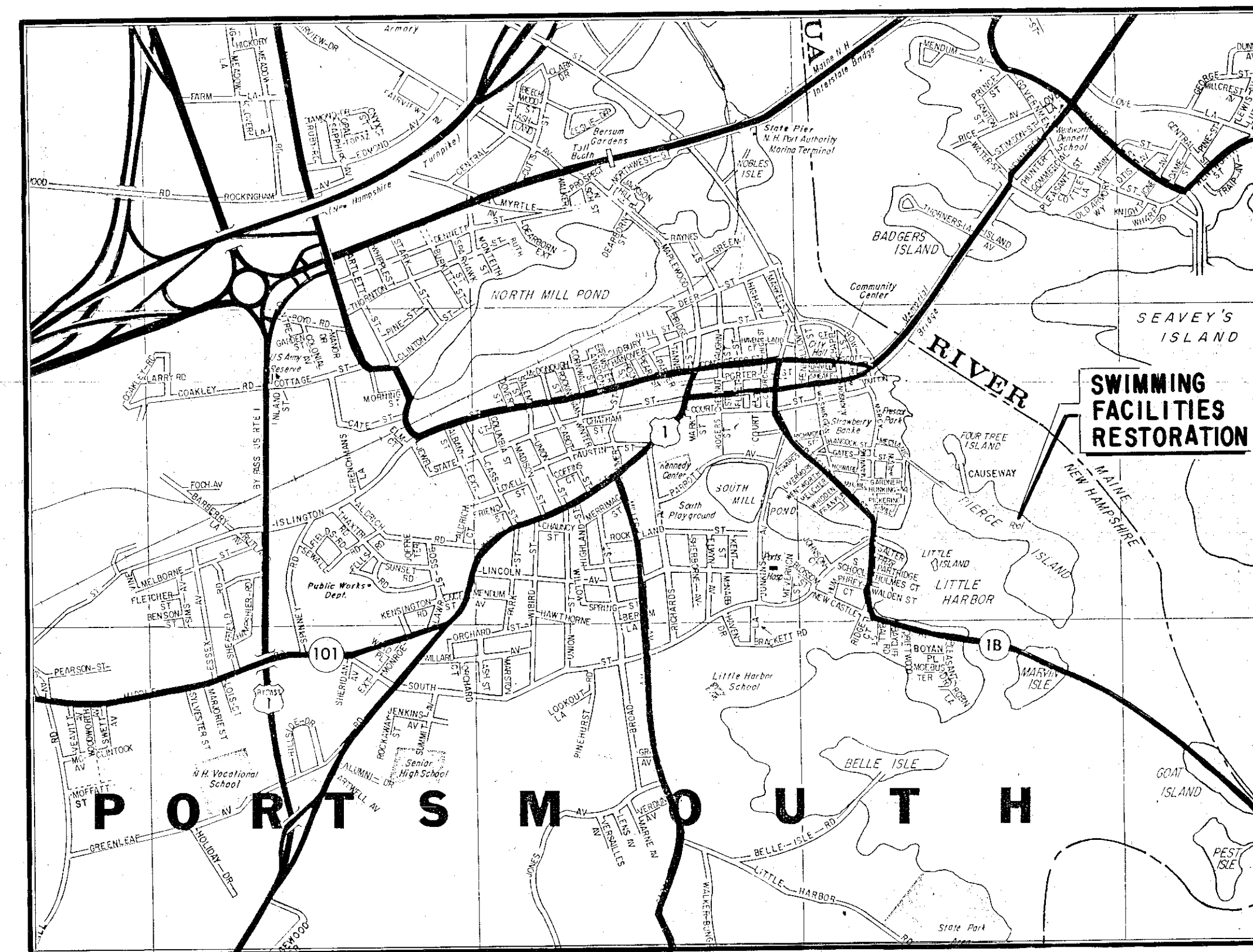


SWIMMING FACILITIES RESTORATION PIERCE ISLAND PORTSMOUTH, N. H.

JULY - 1978



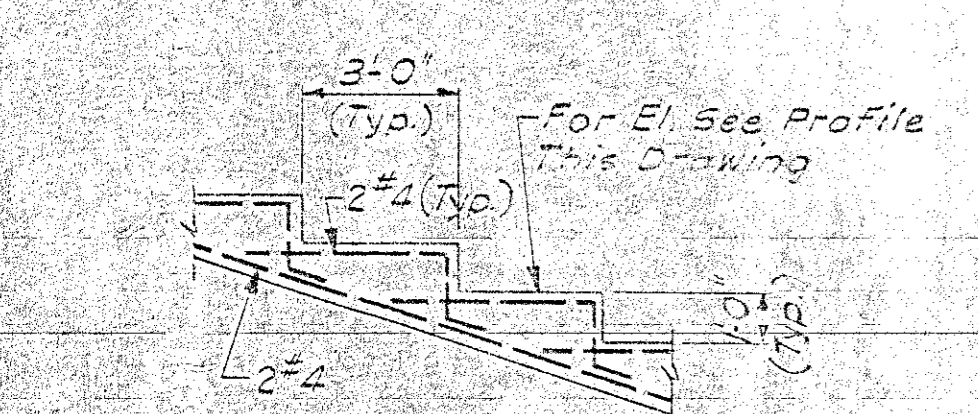
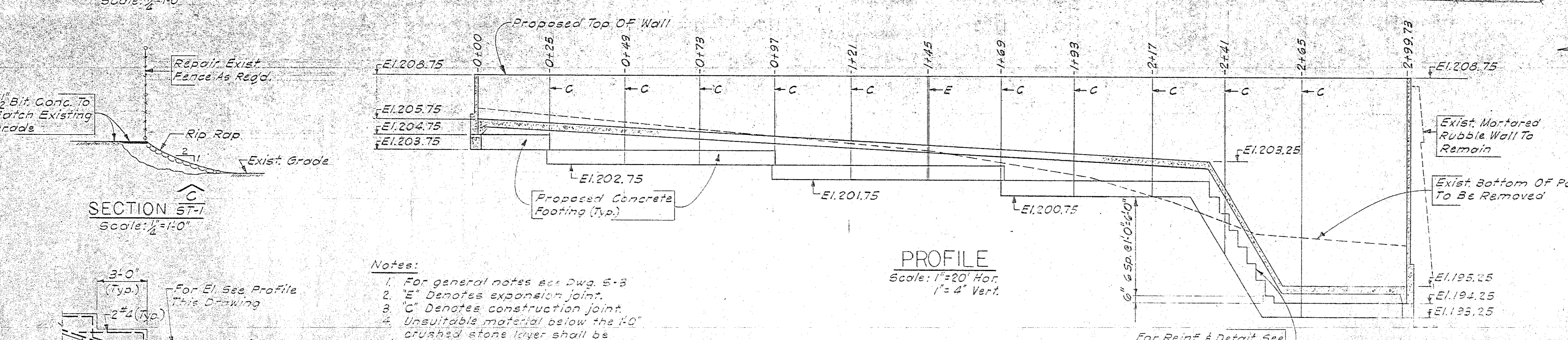
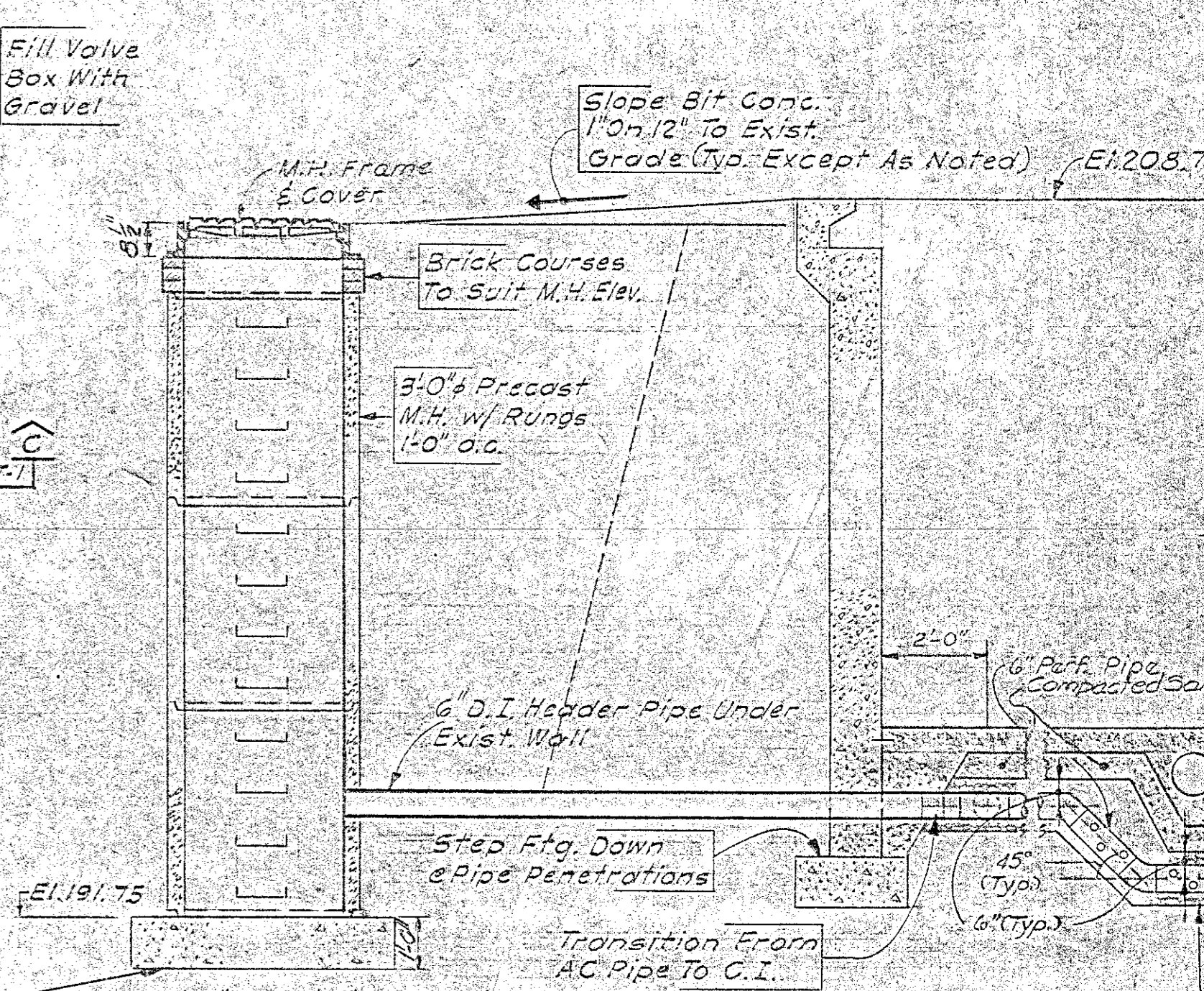
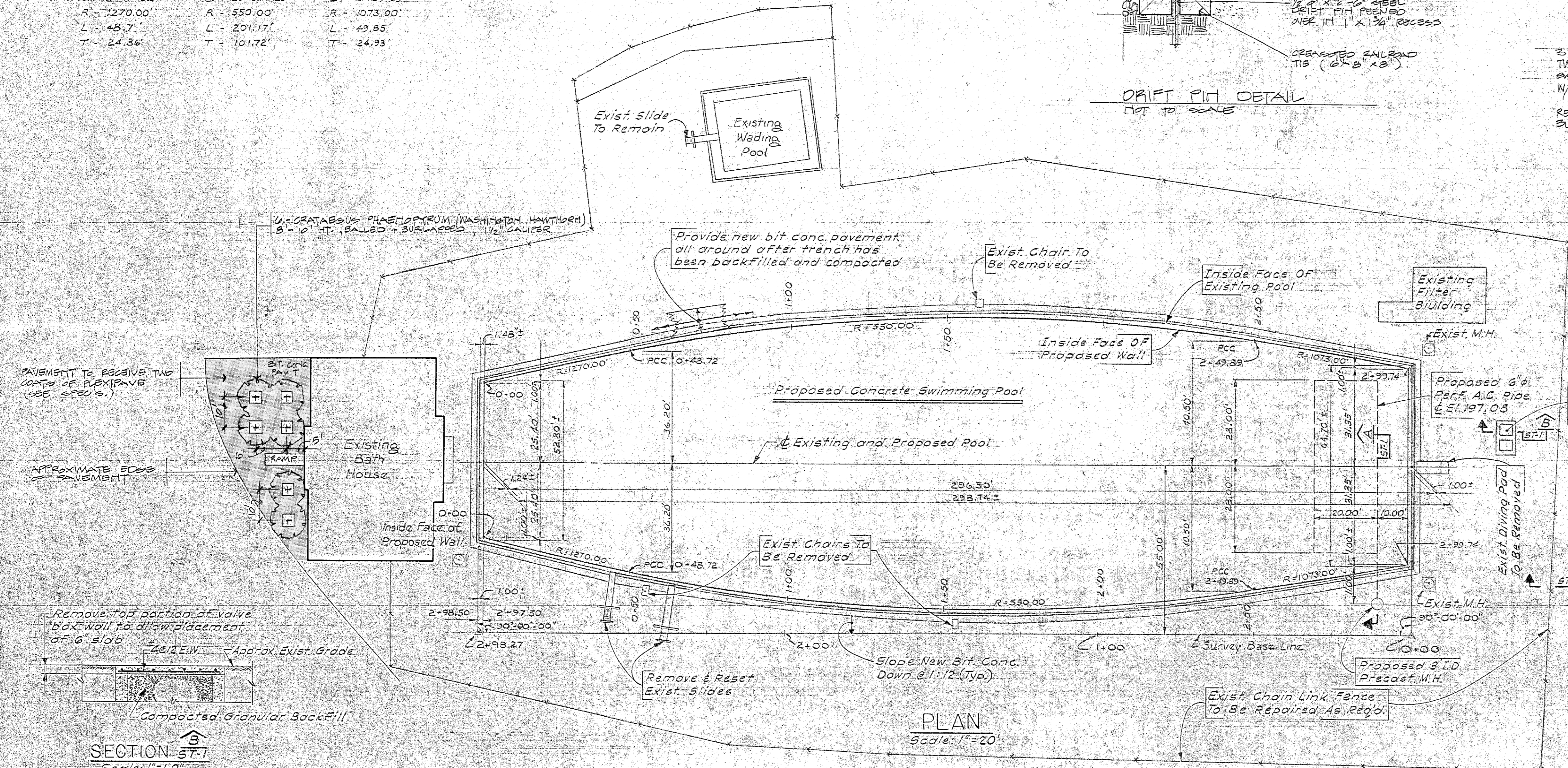
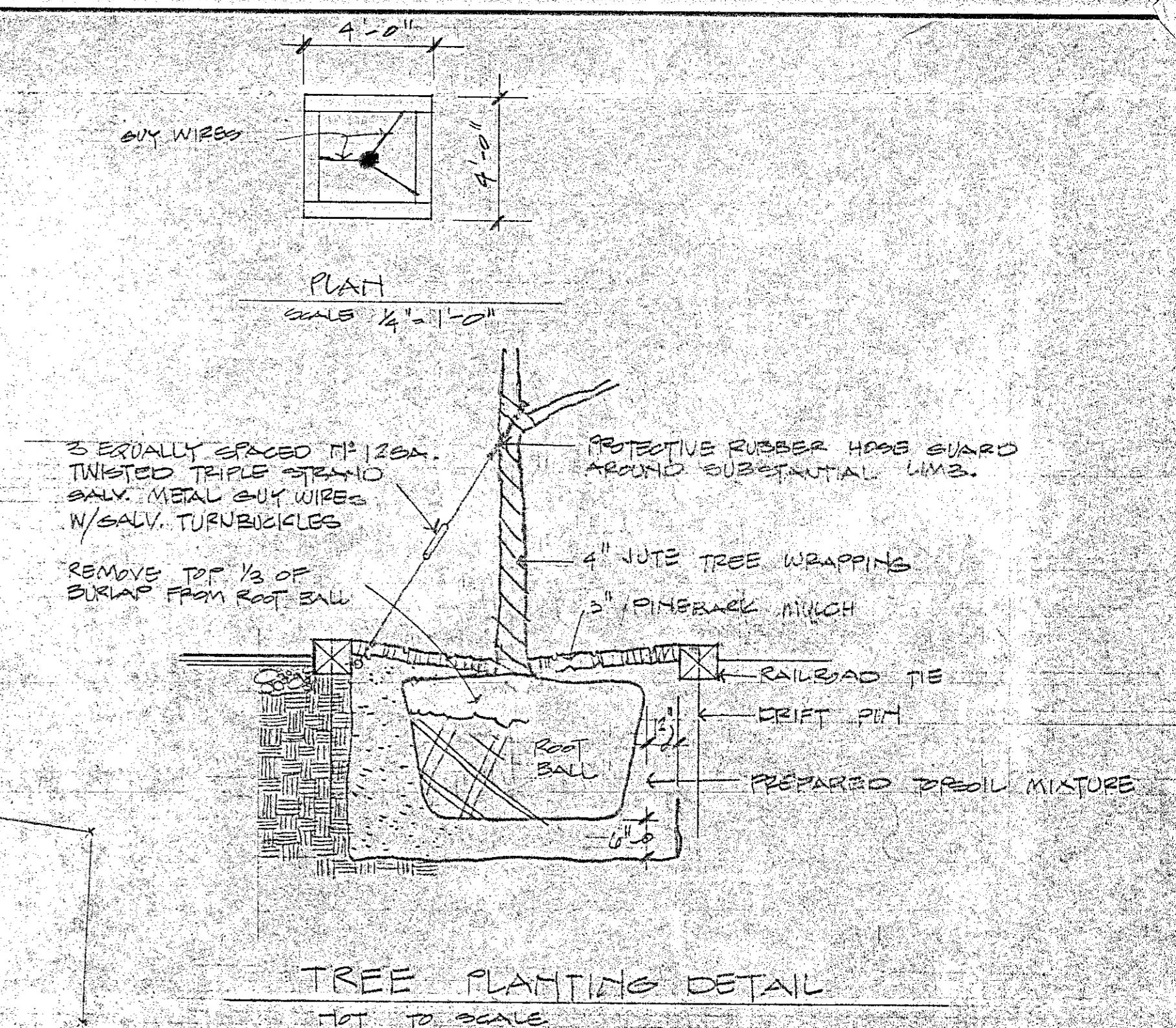
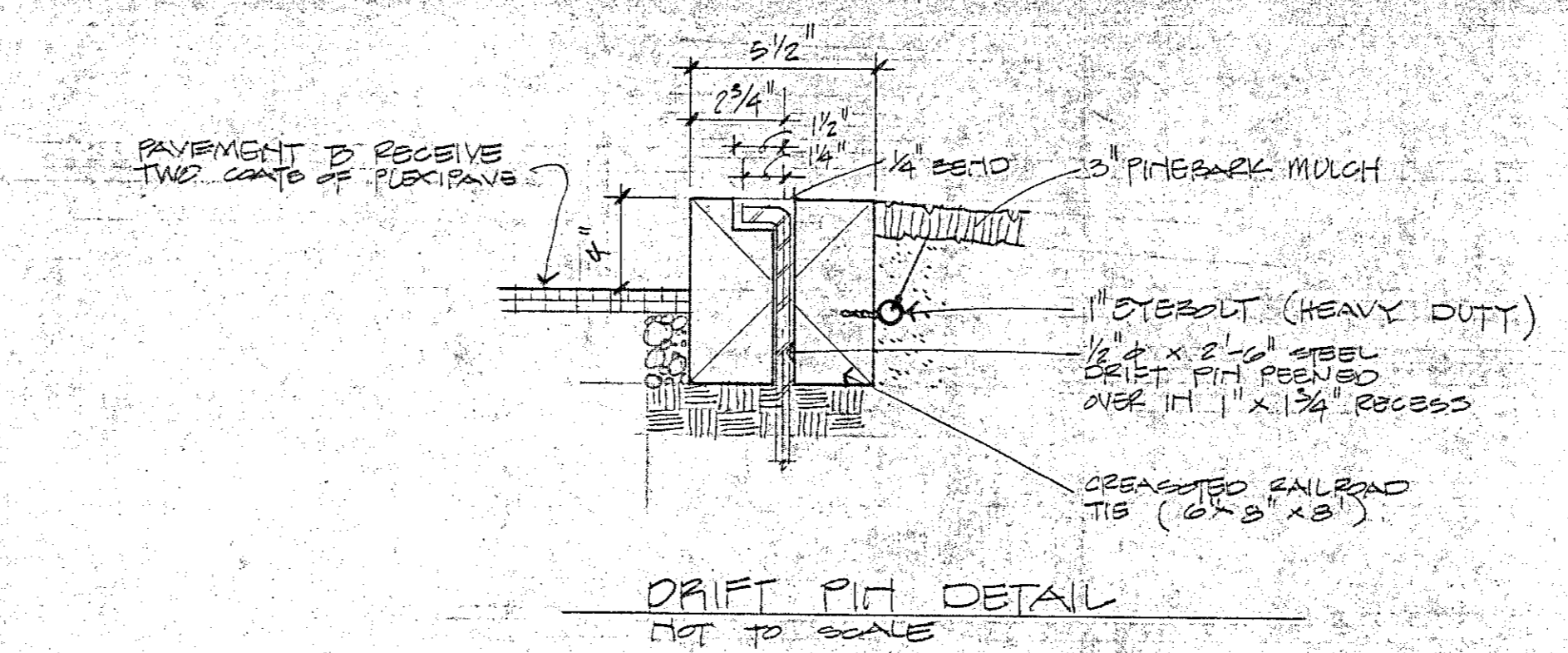
LOCUS PLAN
0 .25 .5 .75 1 MILE
SCALE IN MILES

*PIERCE ISLAND
SWIMMING POOL - PROPOSED
1978*

WHITMAN & HOWARD INC., ENGINEERS and ARCHITECTS
WELLESLEY, MASSACHUSETTS

CURVE DATA

Curve 1	Curve 2	Curve 3
Δ - 2°-11'-52"	Δ - 20°-57'-23"	Δ - 2°-39'-43"
R - 1270.00'	R - 550.00'	R - 1073.00'
L - 48.7'	L - 201.17'	L - 49.85'
T - 24.36'	T - 101.72'	T - 24.93'



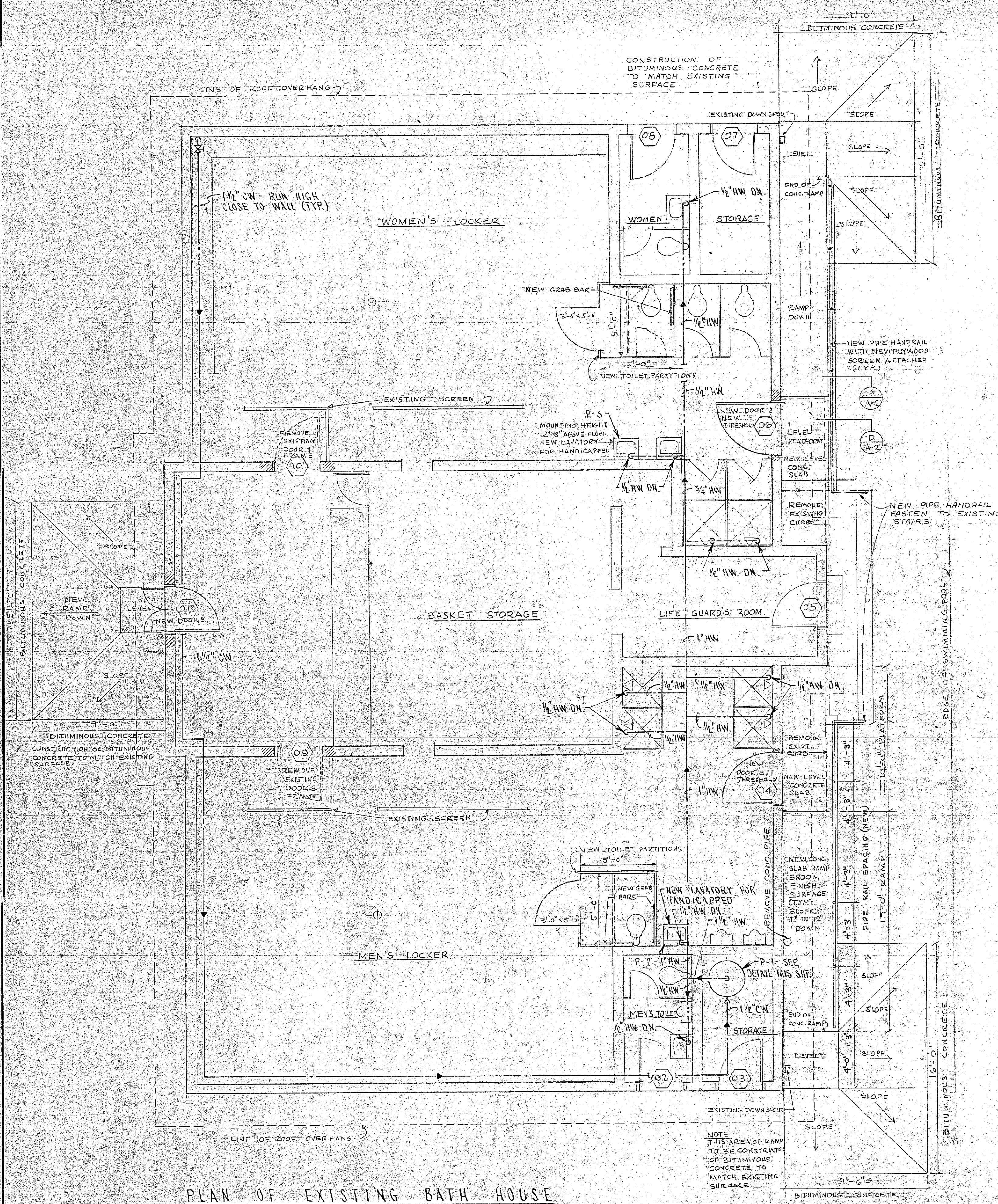
- Notes:**
1. For general notes see Dwg. S-3
 2. "E" Denotes expansion joint.
 3. "C" Denotes construction joint.
 4. Unsuitable material below the 1'-0" crushed stone layer shall be removed and replaced w/compacted granular backfill.

For Reinf. & Detail See Footing Step Detail This Drawing

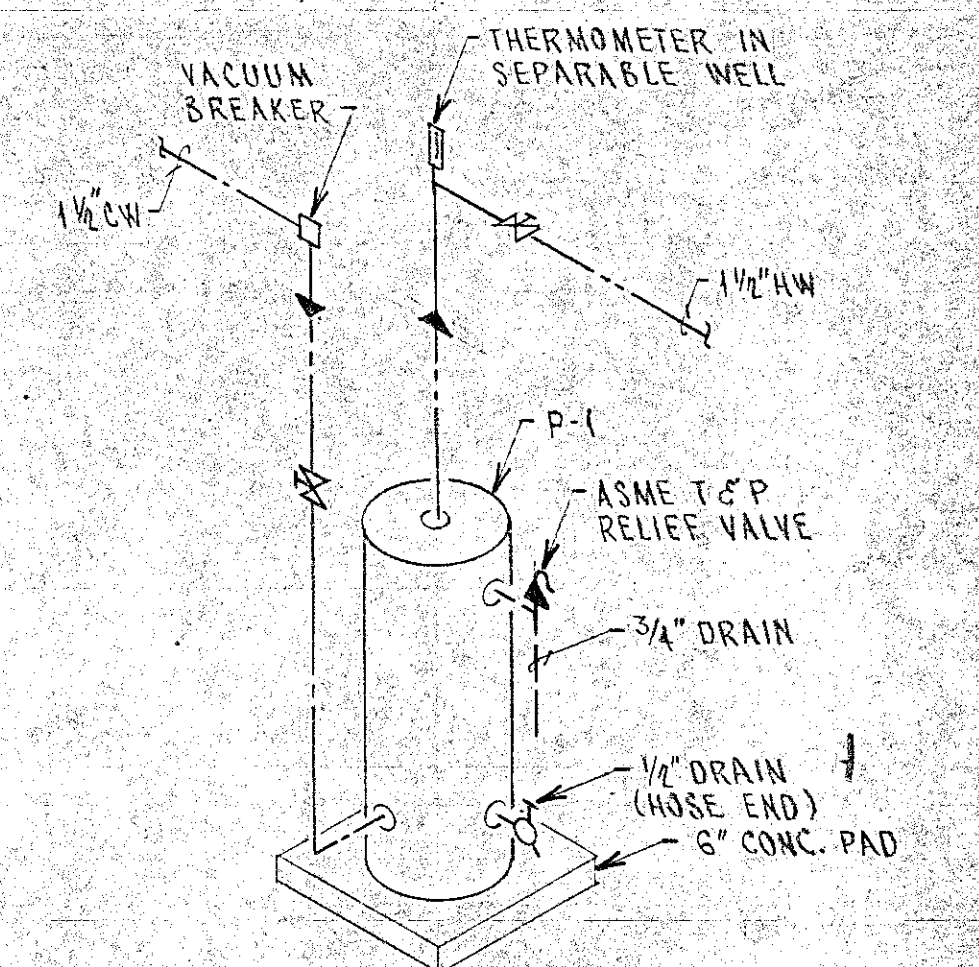
ST-1
SWIMMING FACILITIES RESTORATION
PIERCE ISLAND
PORTSMOUTH, N.H.
LOCATION GEOMETRY

WHITMAN & HOWARD INC. ENGINEERS AND ARCHITECTS 45 WILLIAM ST. WELLESLEY, MASS.		
DESIGNED BY SAG	SCALE AS NOTED	DATE JUNE, 1978
DRAWN BY NK	APPROVED BY <i>[Signature]</i>	
CHECKED BY SAG	JOB NO. 8-029	SHEET 2 OF 10 SHEETS

NO.	DESCRIPTION	DATE



PLAN OF EXISTING BATH HOUSE
SCALE 1/4" = 1'-0"



HOT WATER HEATER DETAIL
NOT TO SCALE

PLUMBING NOTES
FURNISH & INSTALL DRAW-OFF VALVES AT ALL LOW POINTS OF WATER SYSTEMS TO PROVIDE COMPLETE DRAINAGE OF ALL LINES.

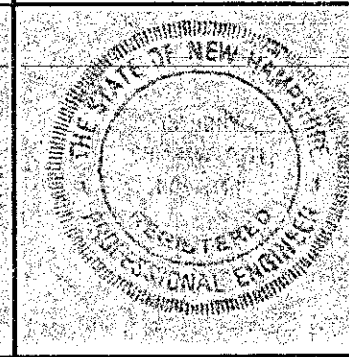
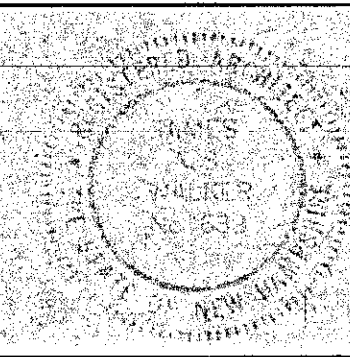
PLUMBING LEGEND
 --- COLD WATER (CW) → DIRECTION OF FLOW
 --- HOT WATER (HW) DN. DOWN

A-1

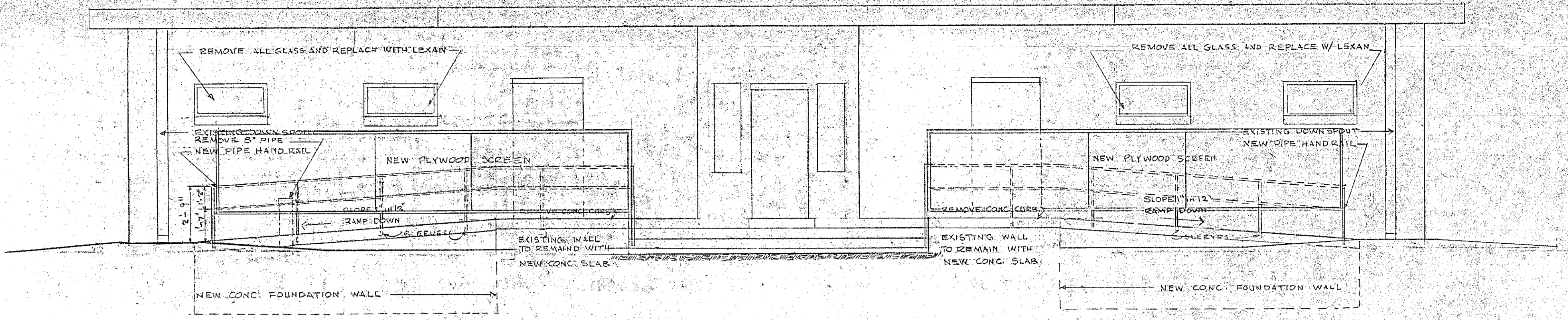
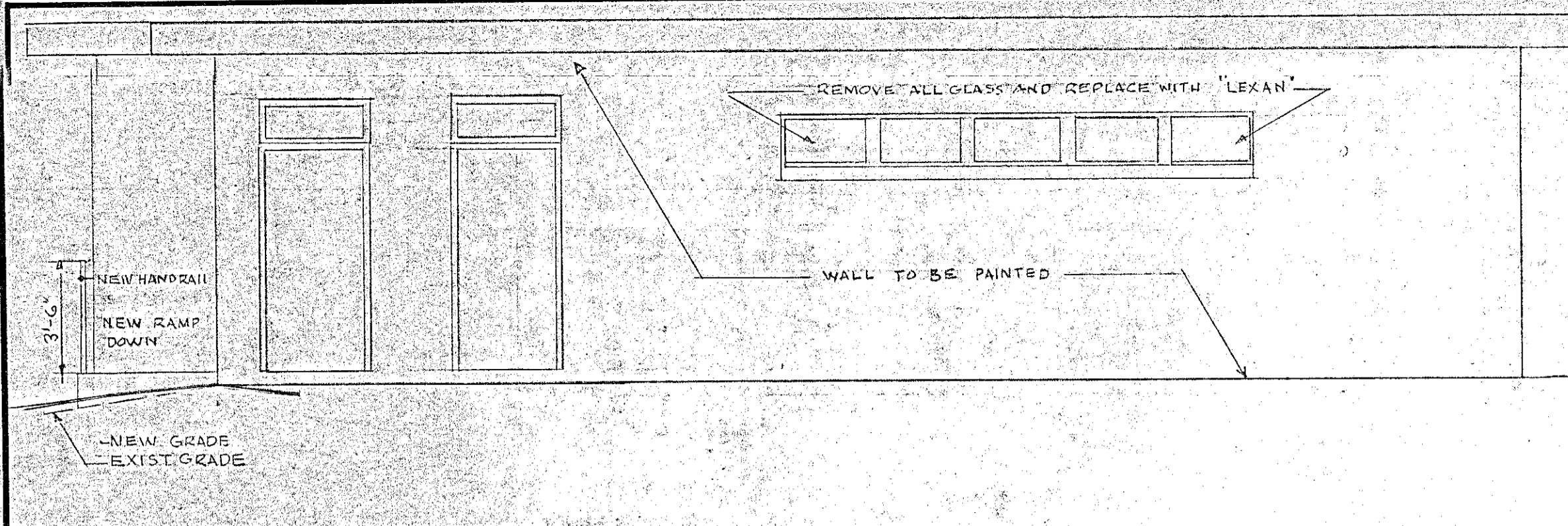
**SWIMMING FACILITIES RESTORATION
PIERCE ISLAND
PORTSMOUTH, N.H.**

BATH HOUSE MODIFICATIONS

NO.	DESCRIPTION	DATE

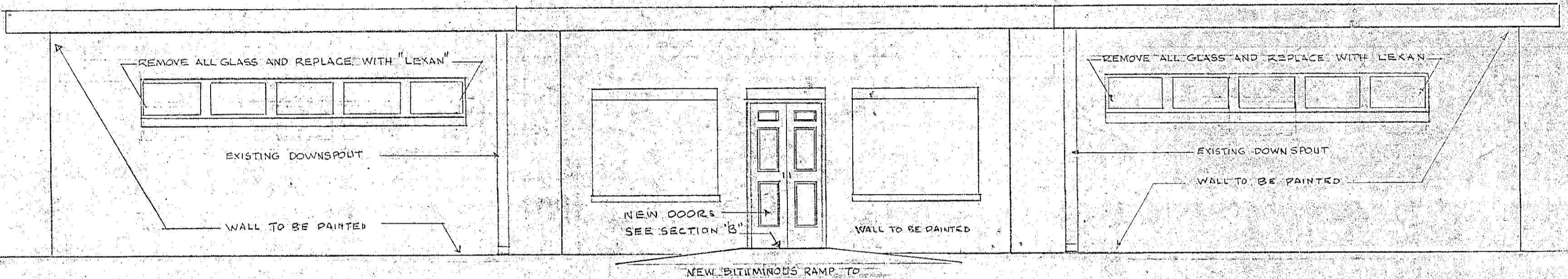
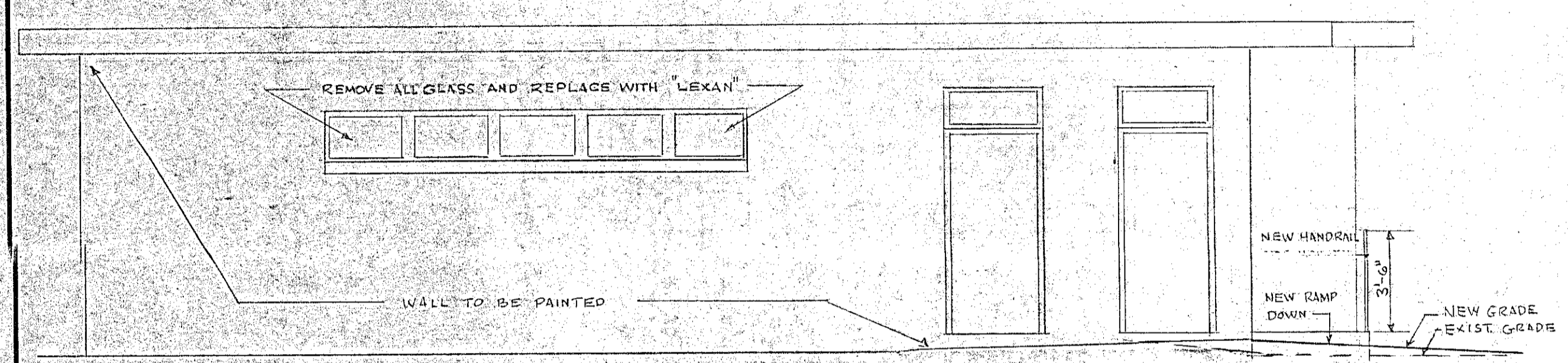


WHITMAN & HOWARD INC. ENGINEERS AND ARCHITECTS 45 WILLIAM ST. WELLESLEY, MASS.		
DESIGNED BY L.B.	SCALE AS NOTED	DATE JUNE 1978
DRAWN BY L.B.	APPROVED <i>Anthony Chiavolotto</i>	
CHECKED BY J.A.S.W.	JOB NO. 8-029	SHEET 3 OF 10 SHEETS



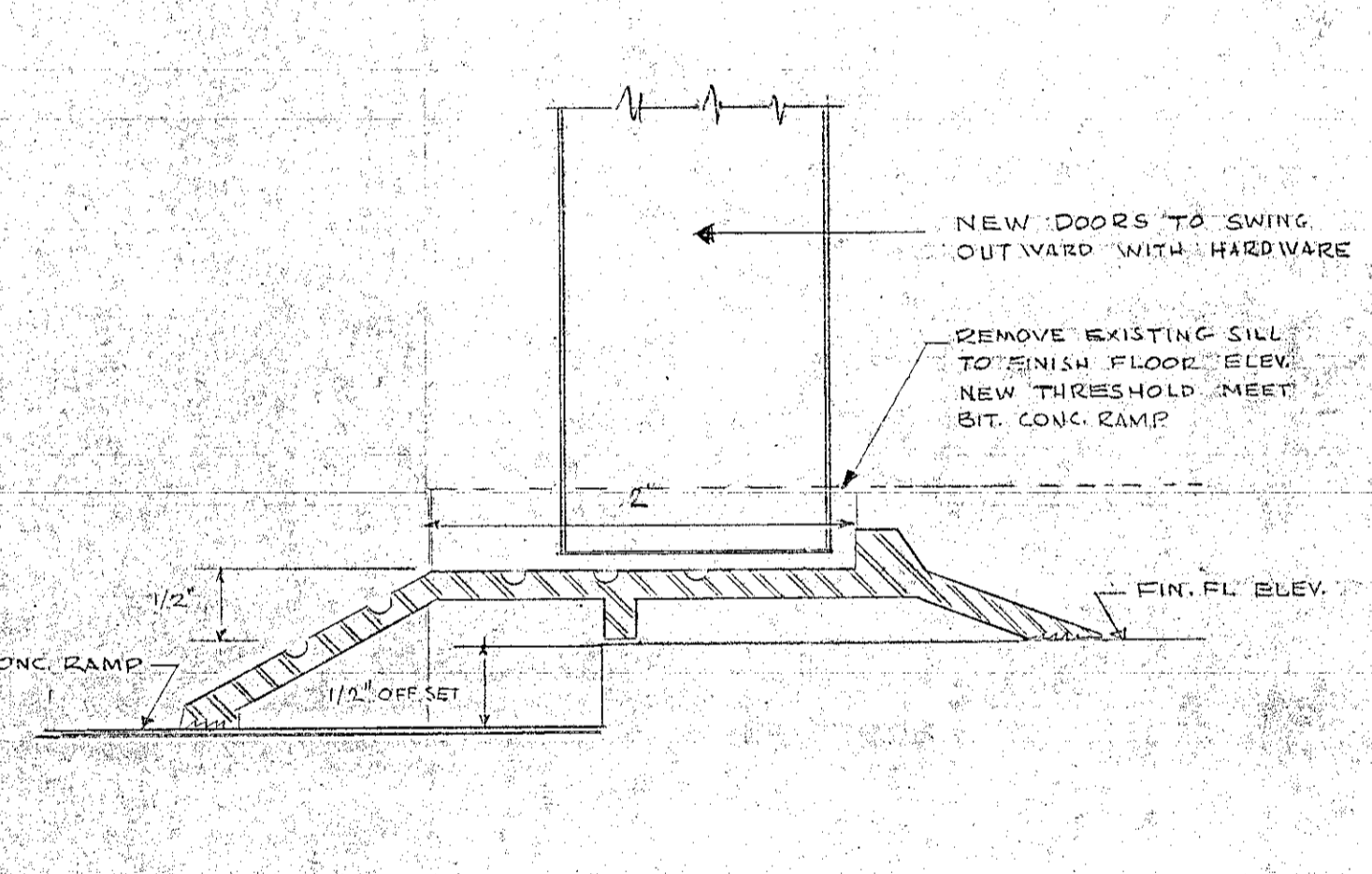
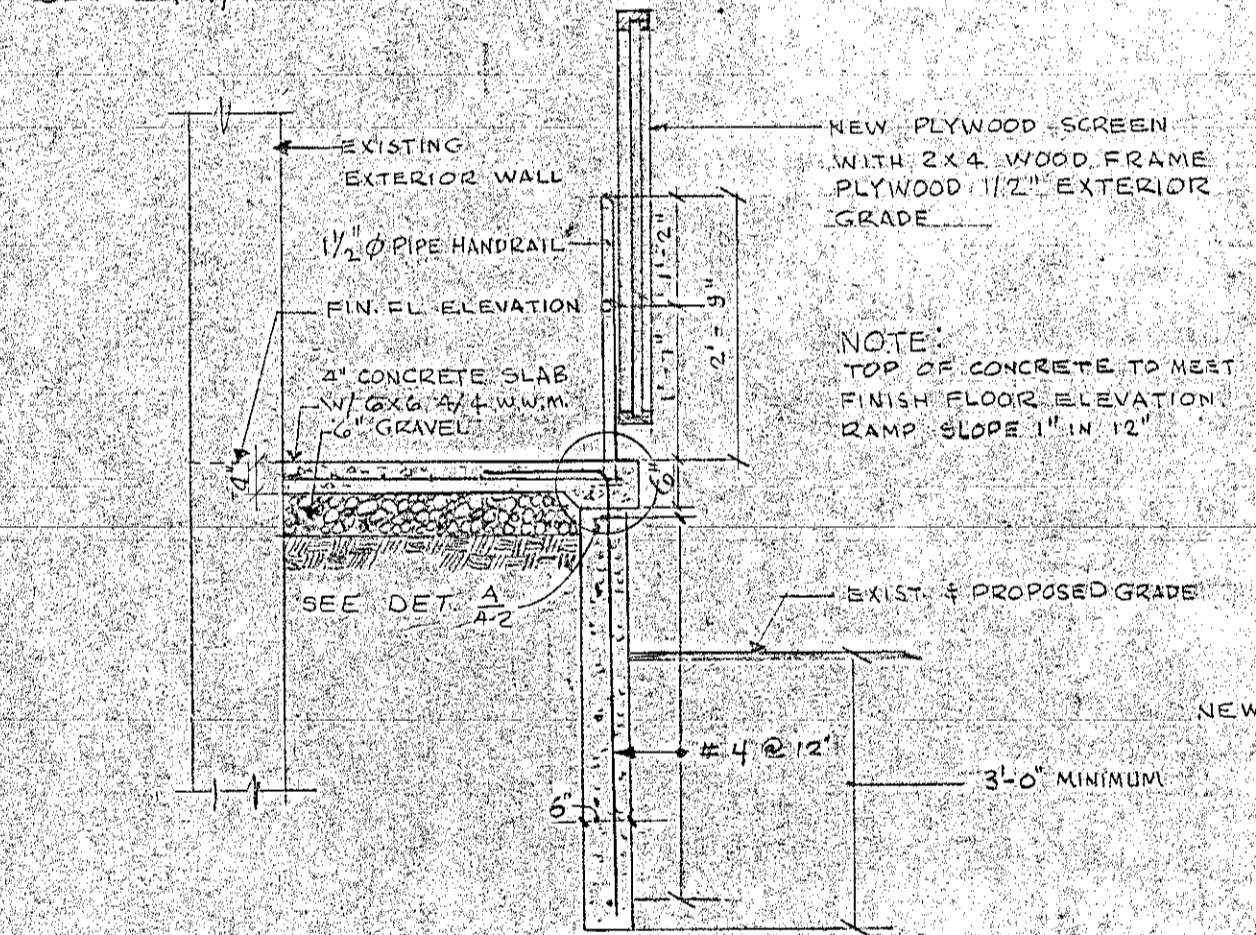
WEST ELEVATION
SCALE: 1/4" = 1'-0"

NORTH ELEVATION
SCALE: 1/4" = 1'-0"



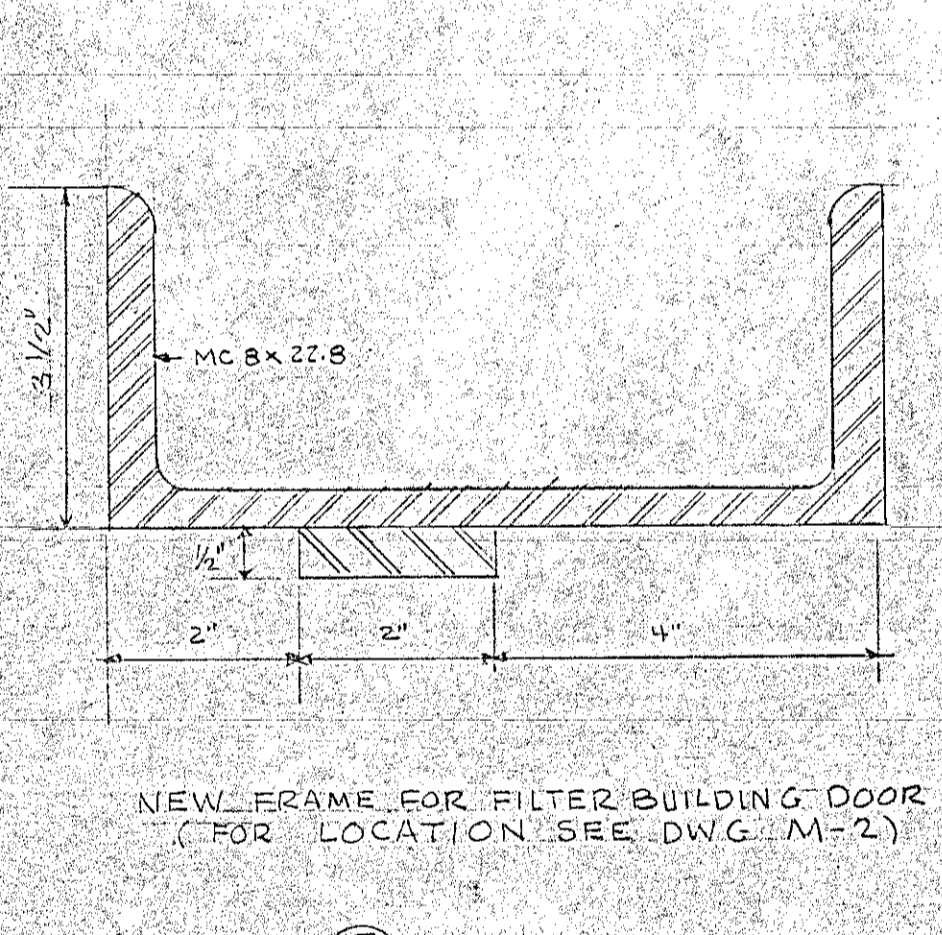
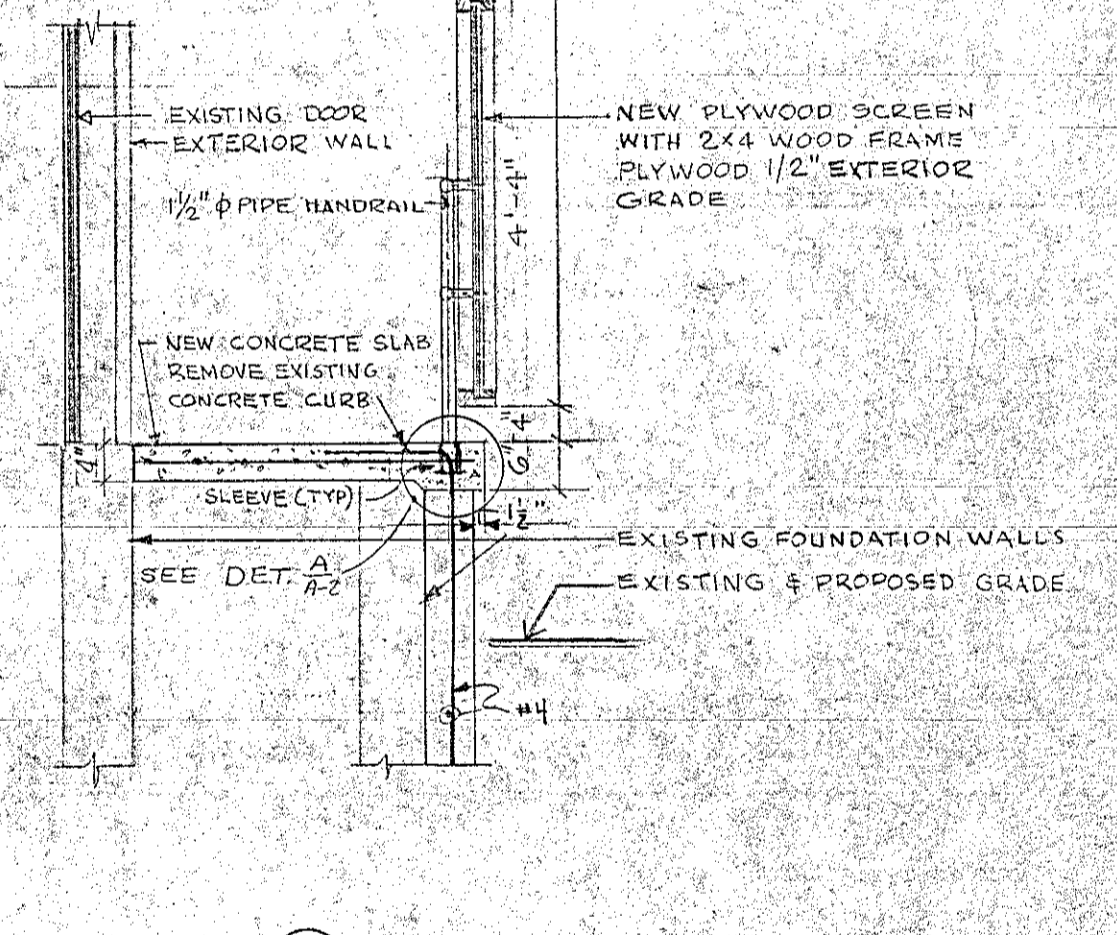
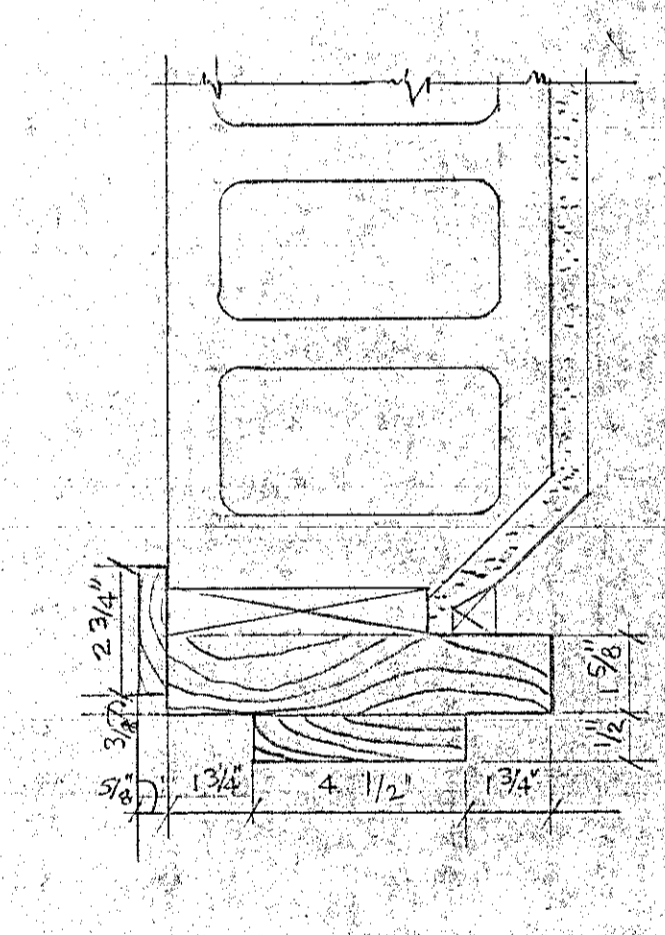
EAST ELEVATION
SCALE: 1/4" = 1'-0"

SOUTH ELEVATION
SCALE: 1/4" = 1'-0"



SECTION A-A THRU RAMP
SCALE: 1/2" = 1'-0"

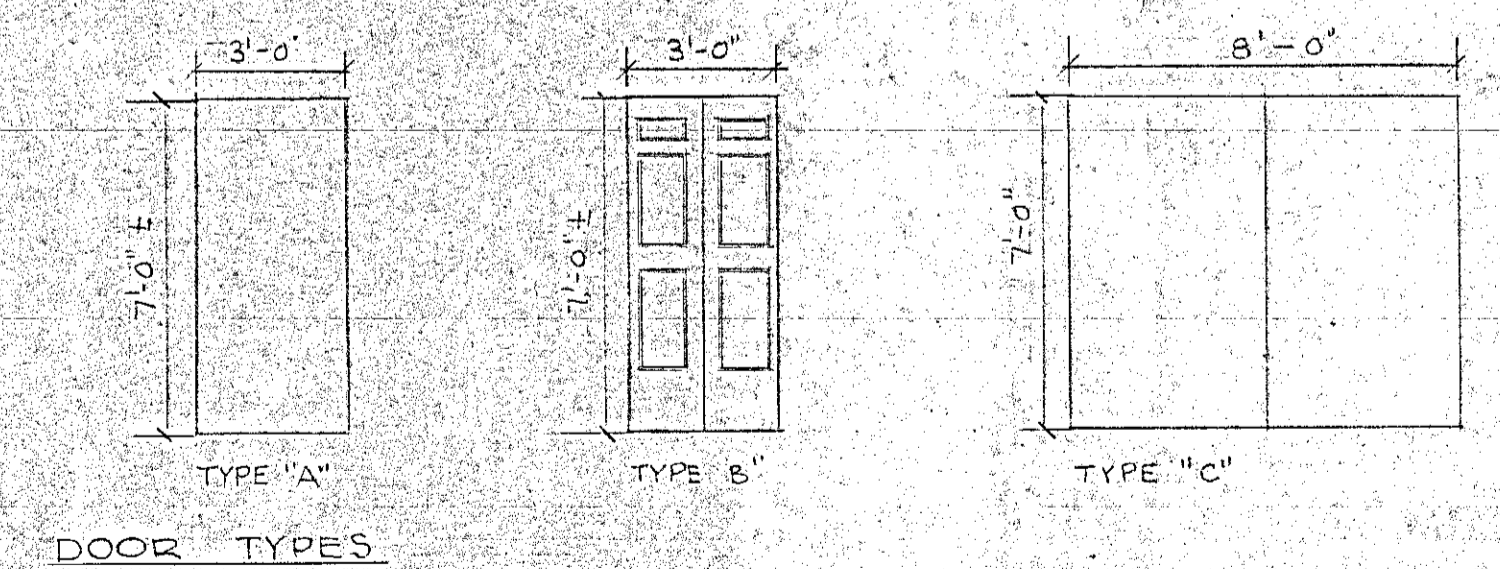
SECTION B-B NEW THRESHOLD @ DOOR
SCALE: FULL SIZE



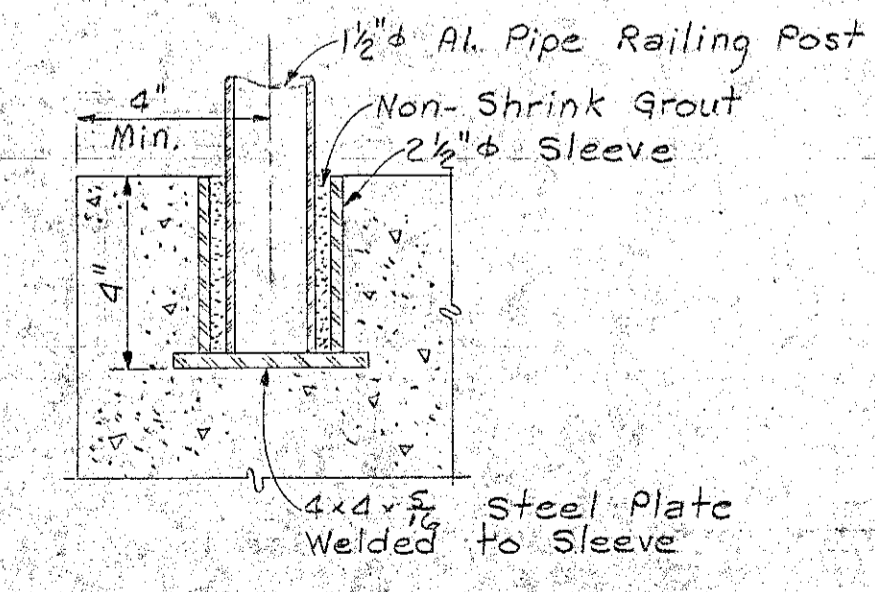
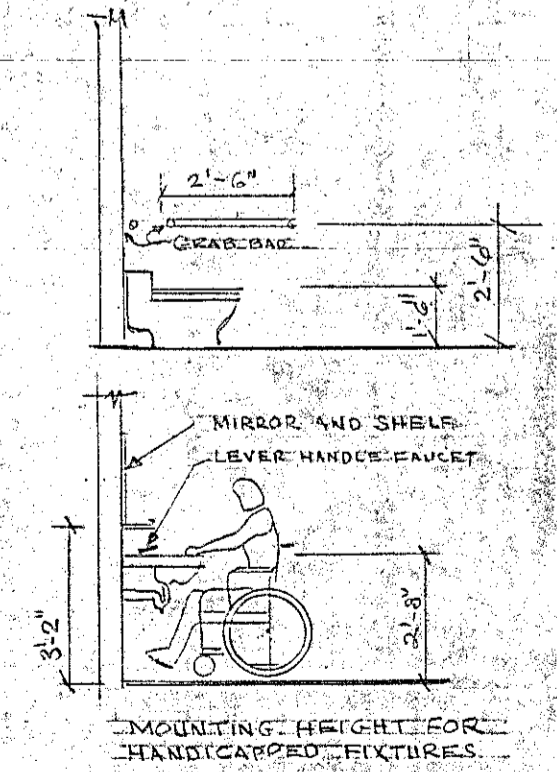
SECTION C-C JAMB DETAIL
SCALE: 3/8" = 1'-0"

SECTION D-D @ LEVEL PLATFORM
SCALE: 1/2" = 1'-0"

SECTION E-E JAMB & HEAD DETAIL
SCALE: 3/8" = 1'-0"



DOOR SCHEDULE										
DOOR NO.	LOCATION	HGT	WIDTH	THICK.	HEAD	JAMB	FRAME	MATERIAL	REMARKS	
1.	ENTRANCE	6'-7"	4'-6"	1 3/4"	C	C		WOOD	TYPE B DOOR	
2.	MEN'S TOILET									
3.	STORAGE									
4.	MEN'S LOCKER	7'-2"	3'-0"	1 3/4"	C	C		WOOD	TYPE A DOOR	
5.	LIFE GUARD									
6.	GIRL'S LOCKER	7'-2"	3'-0"	1 3/4"	C	C		WOOD	TYPE A DOOR	
7.	STORAGE									
8.	WOMEN'S TOILET									
9.	MEN'S LOCKER							WOOD	REMOVE DOOR	
10.	WOMEN'S LOCKER							WOOD	REMOVE DOOR	
11.	FILTER BLDG	6'-7"	4'-0"	1 3/4"	E	E	E	METAL	TYPE C DOOR	



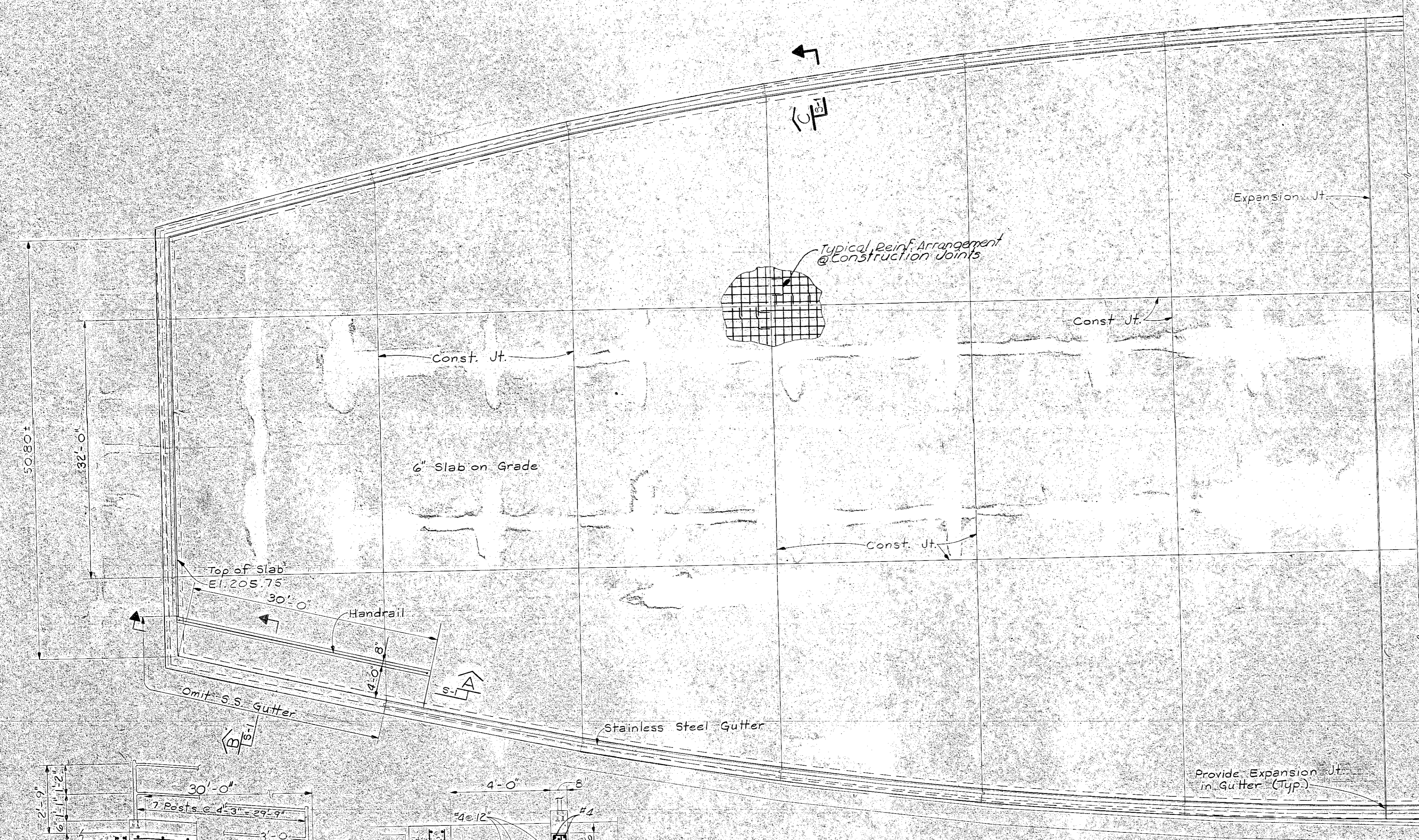
DETAIL A
SCALE: 3/8" = 1'-0"

A-2

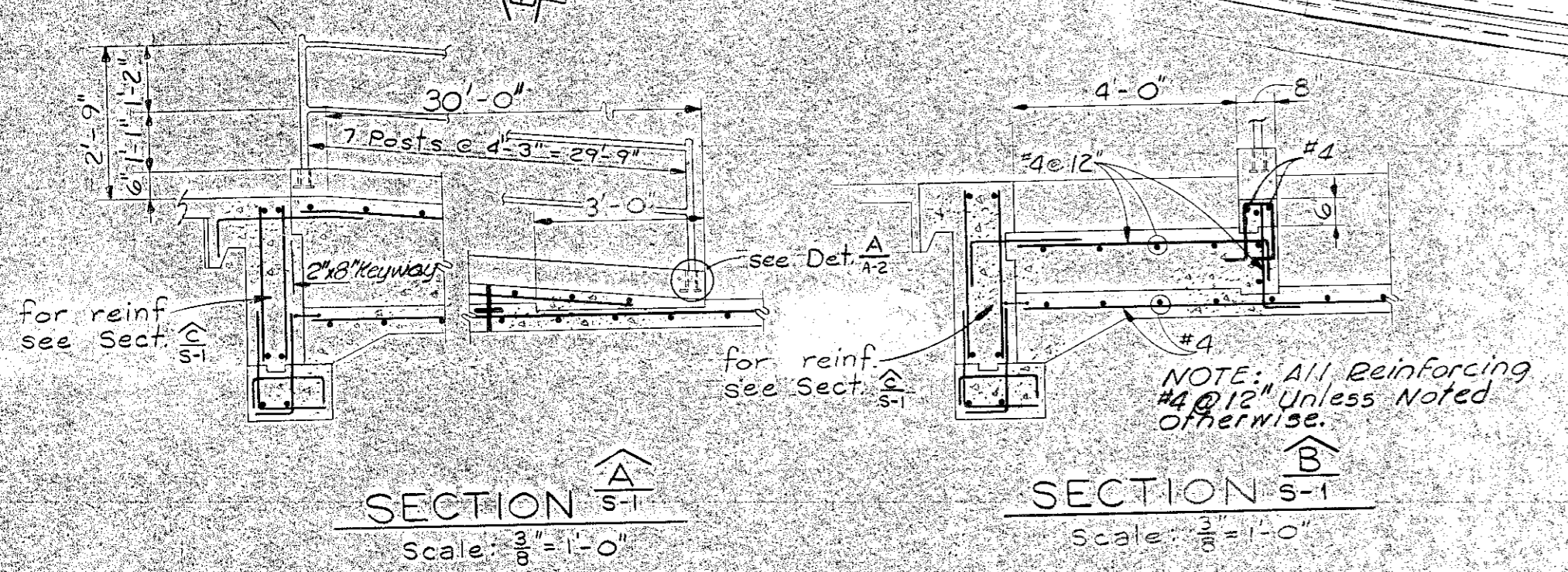
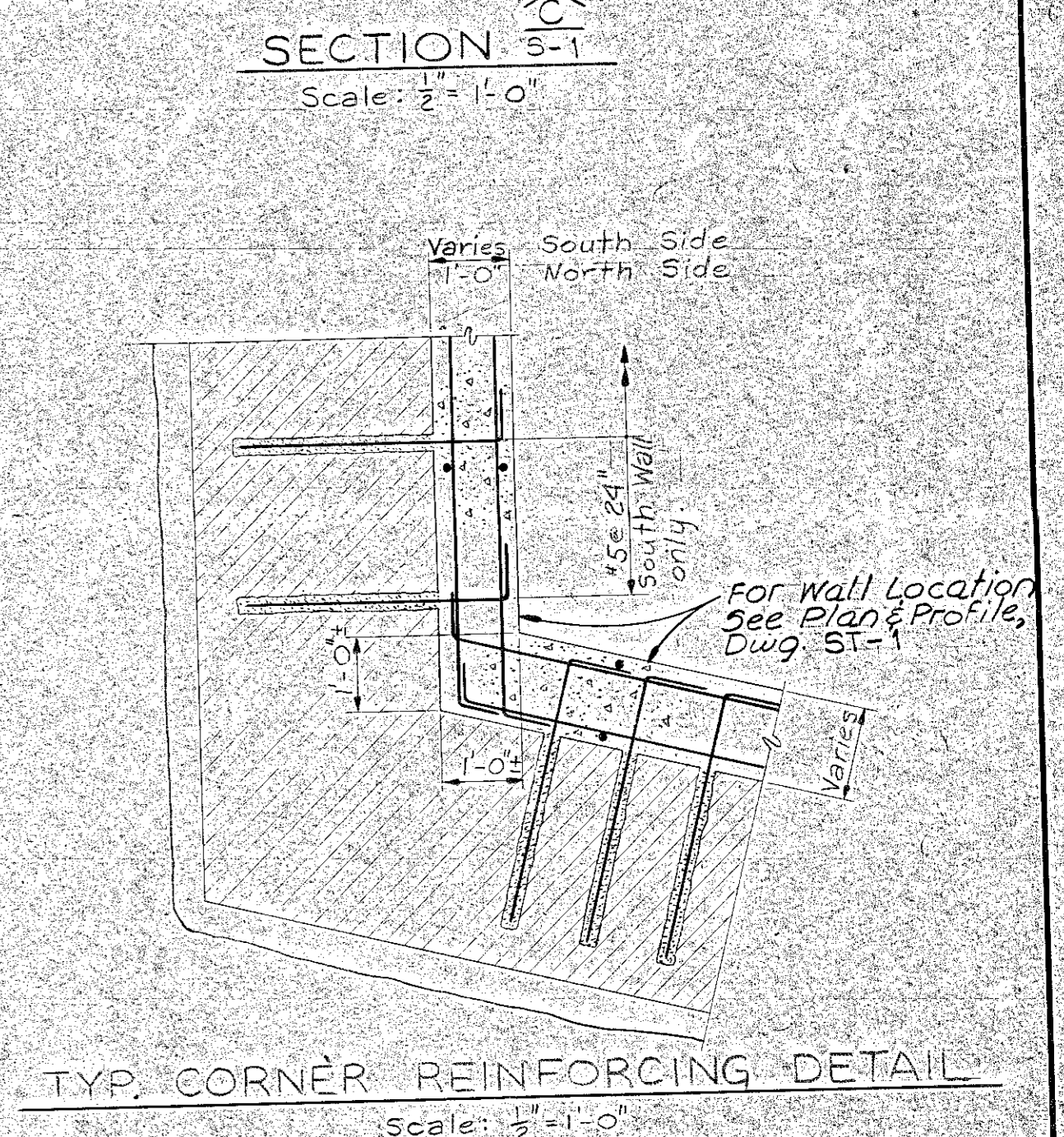
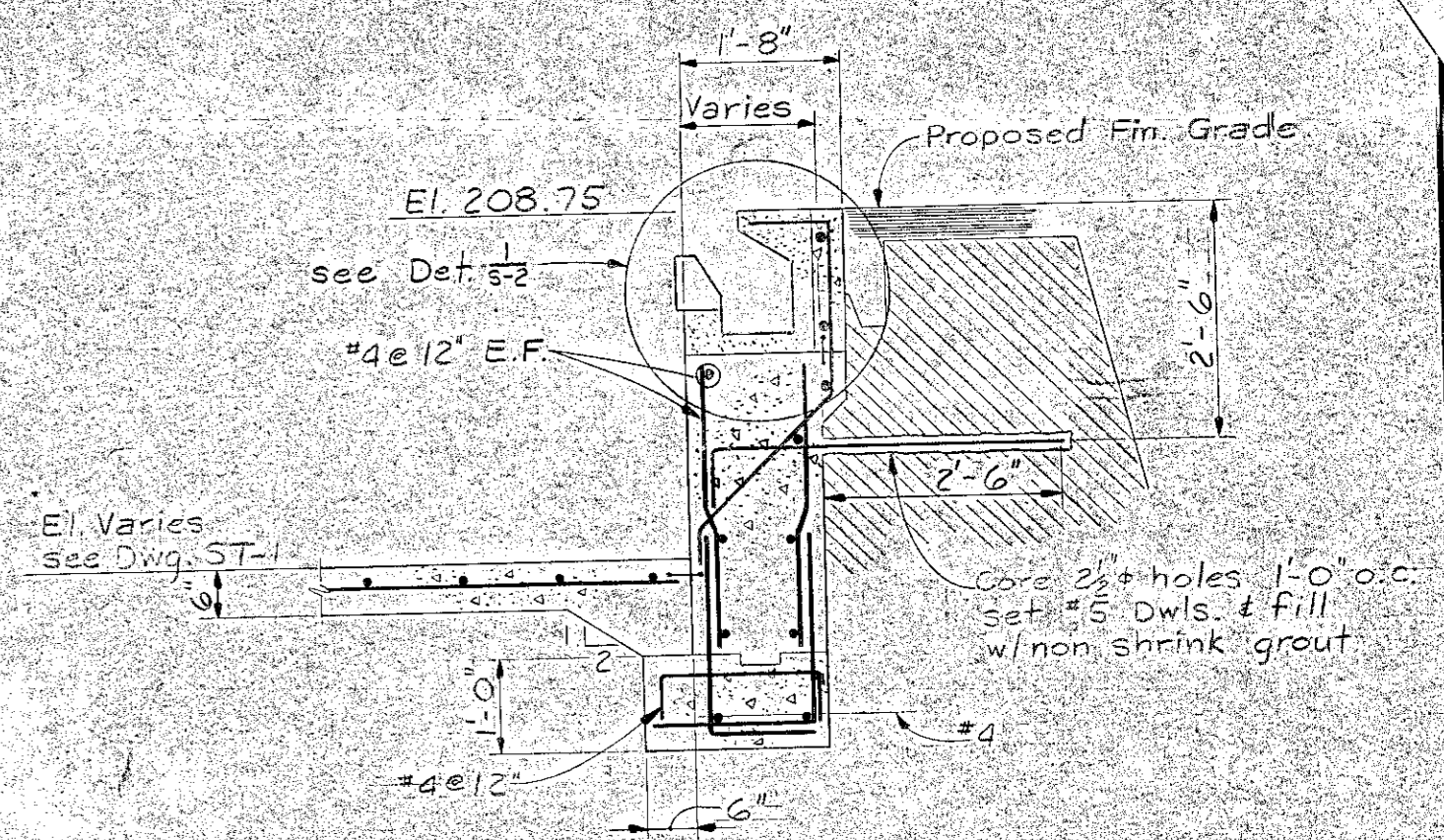
**SWIMMING FACILITIES RESTORATION
PIERCE ISLAND
PORTSMOUTH, N.H.
BATH HOUSE MODIFICATIONS**

WHITMAN & HOWARD INC.
ENGINEERS AND ARCHITECTS
45 WILLIAM ST. WELLESLEY, MASS.

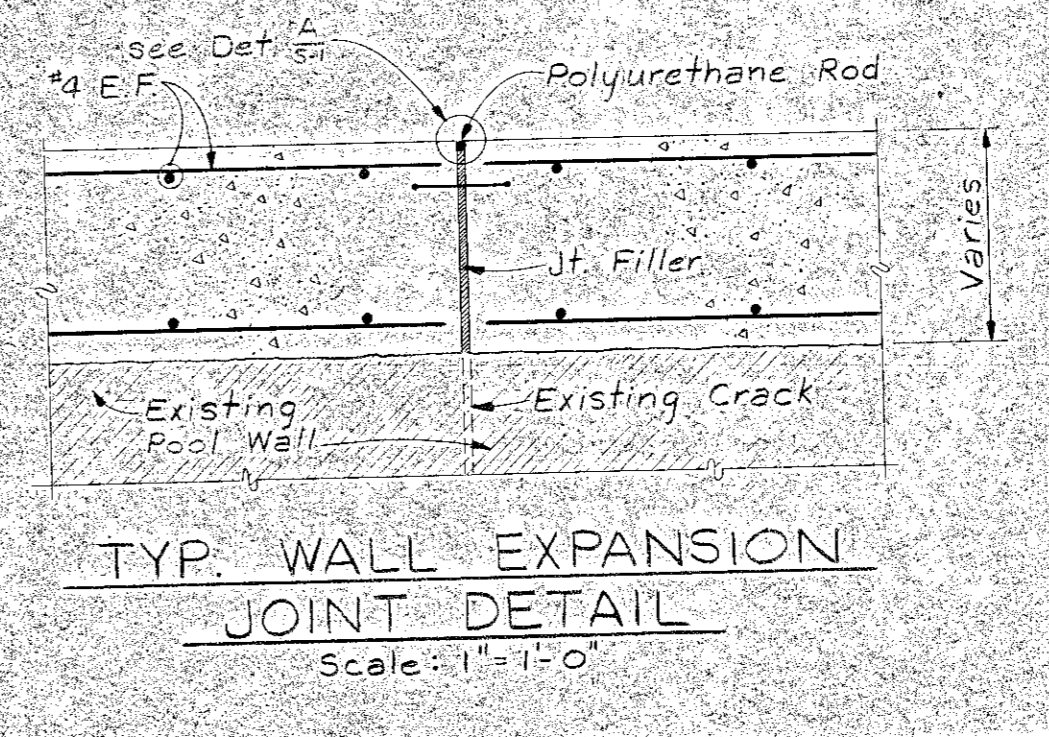
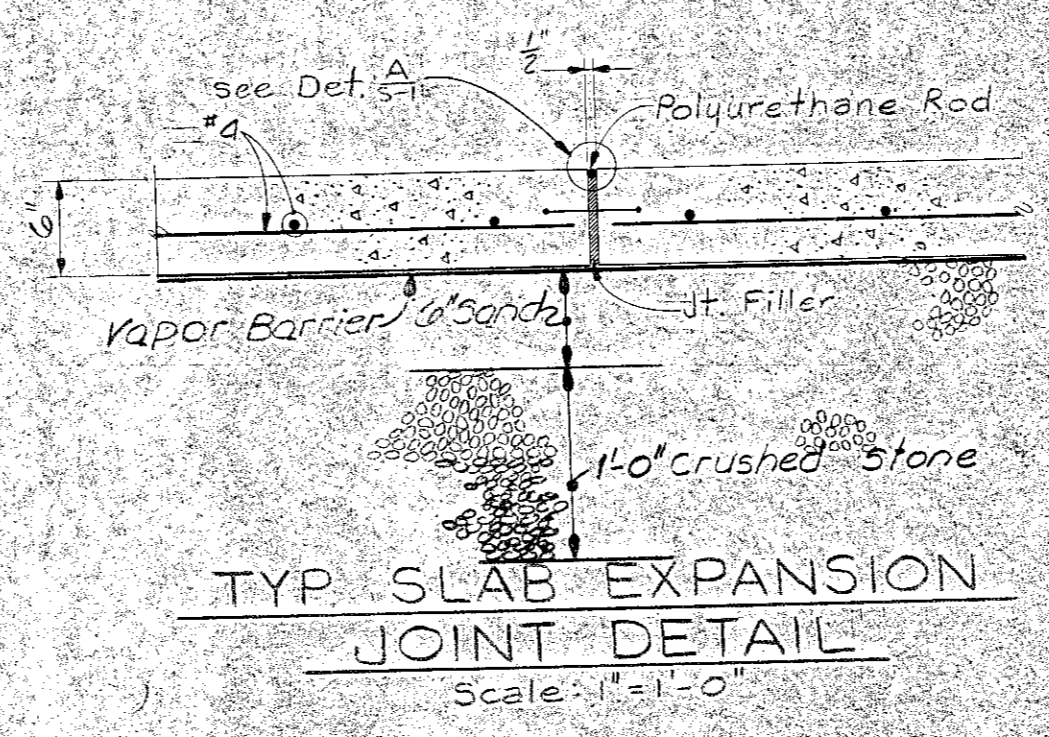
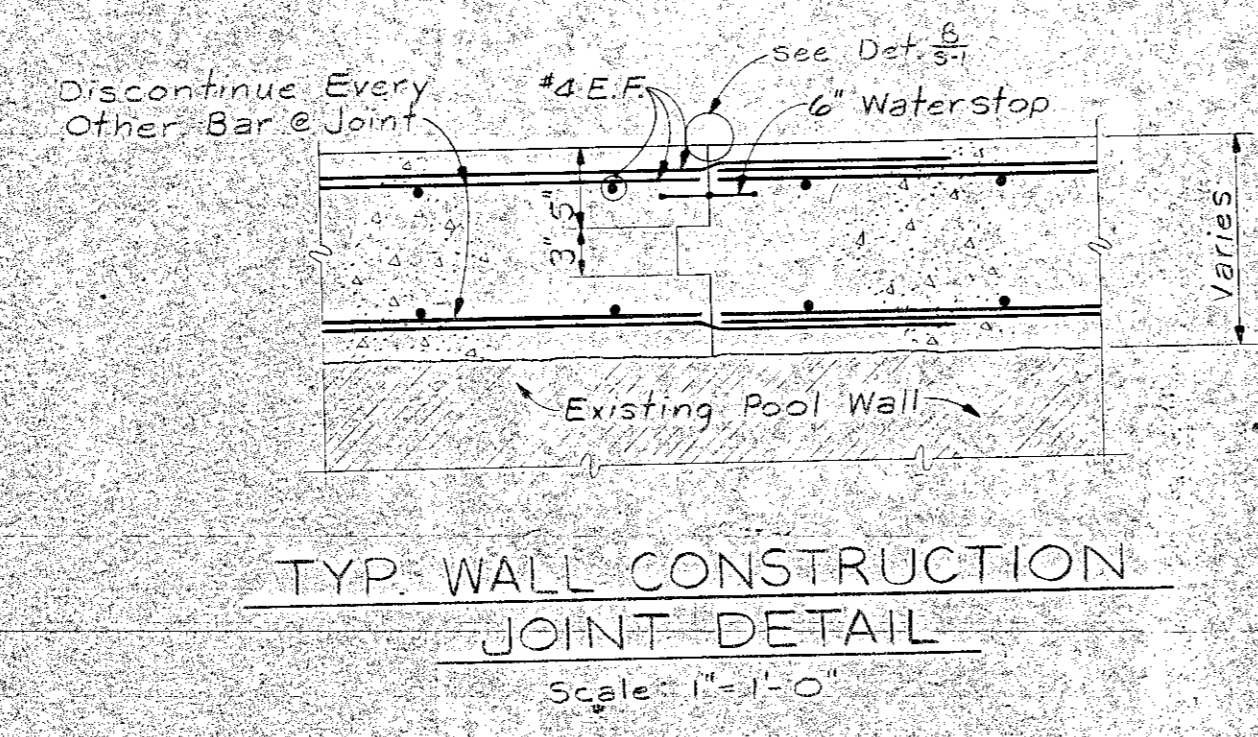
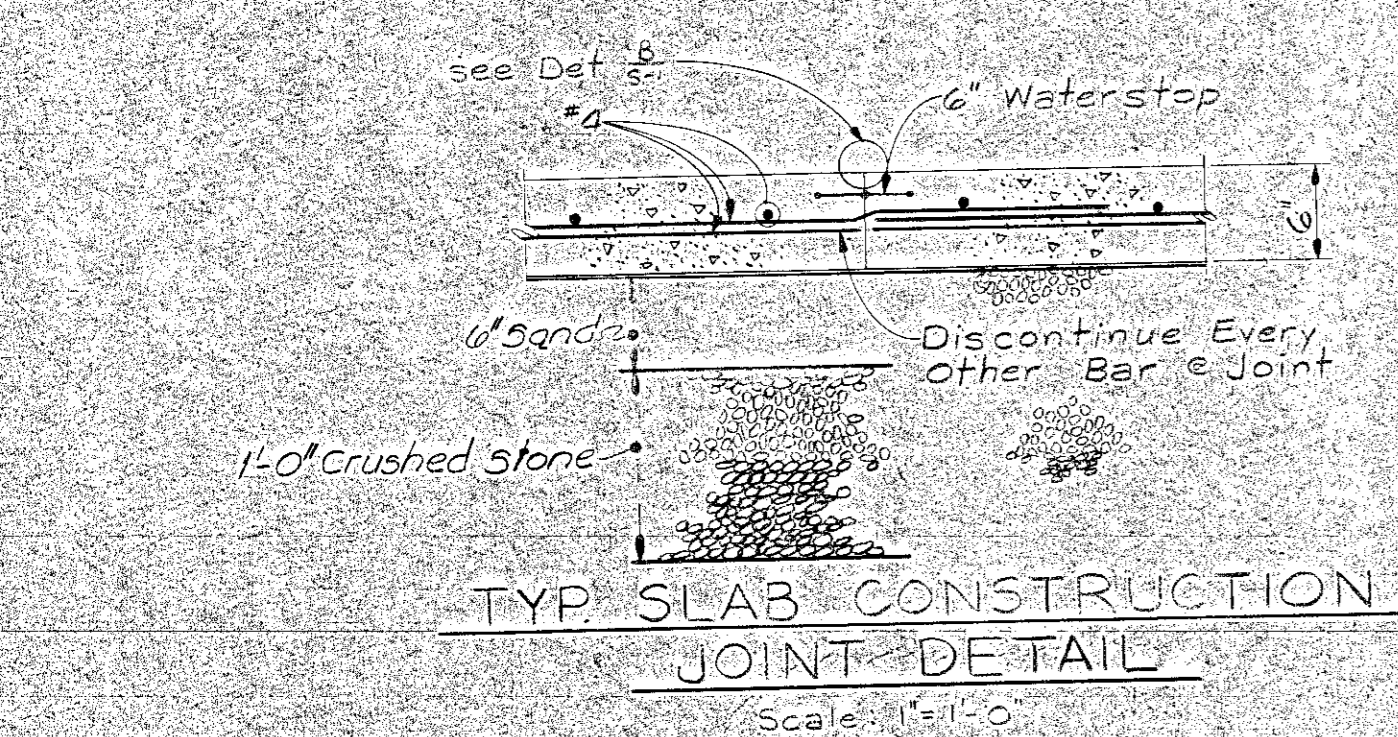
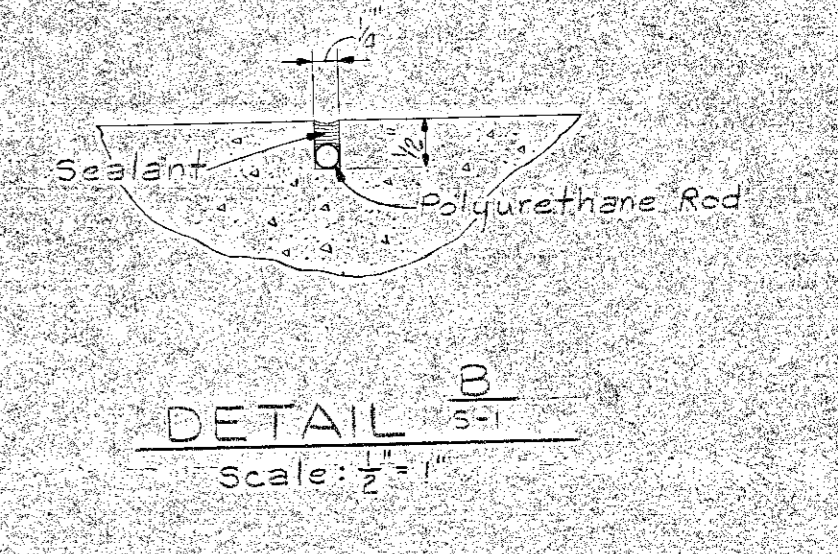
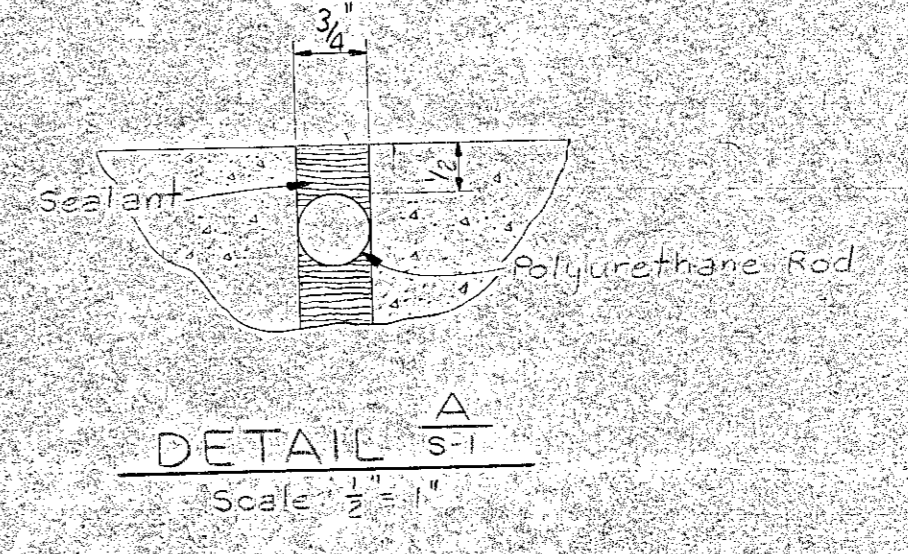
DESIGNED BY L.B.	SCALE AS NOTED	DATE JUNE 1978
DRAWN BY L.B.	APPROVED <i>Anthony Chaswell</i>	
CHECKED BY J.A.S.W.	JOB NO. 8-029	SHEET 4 OF 10 SHEETS



Notes:
 1. For General Notes see Dwg. S-3.
 2. For Construction & Expansion Joint location see Dwg. ST-1.
 3. For Slab Profile see Dwg. ST-1.

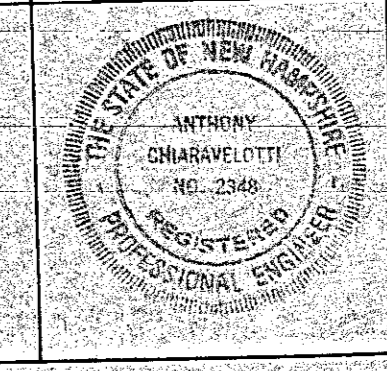


PLAN - SHALLOW END
 Scale: 1/8" = 1'-0"



S-1
 SWIMMING FACILITIES RESTORATION
 PIERCE ISLAND
 PORTSMOUTH, N.H.
 MAIN POOL - SHALLOW END

NO.	DESCRIPTION	DATE



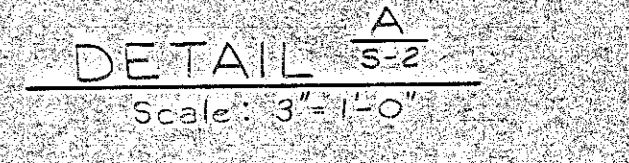
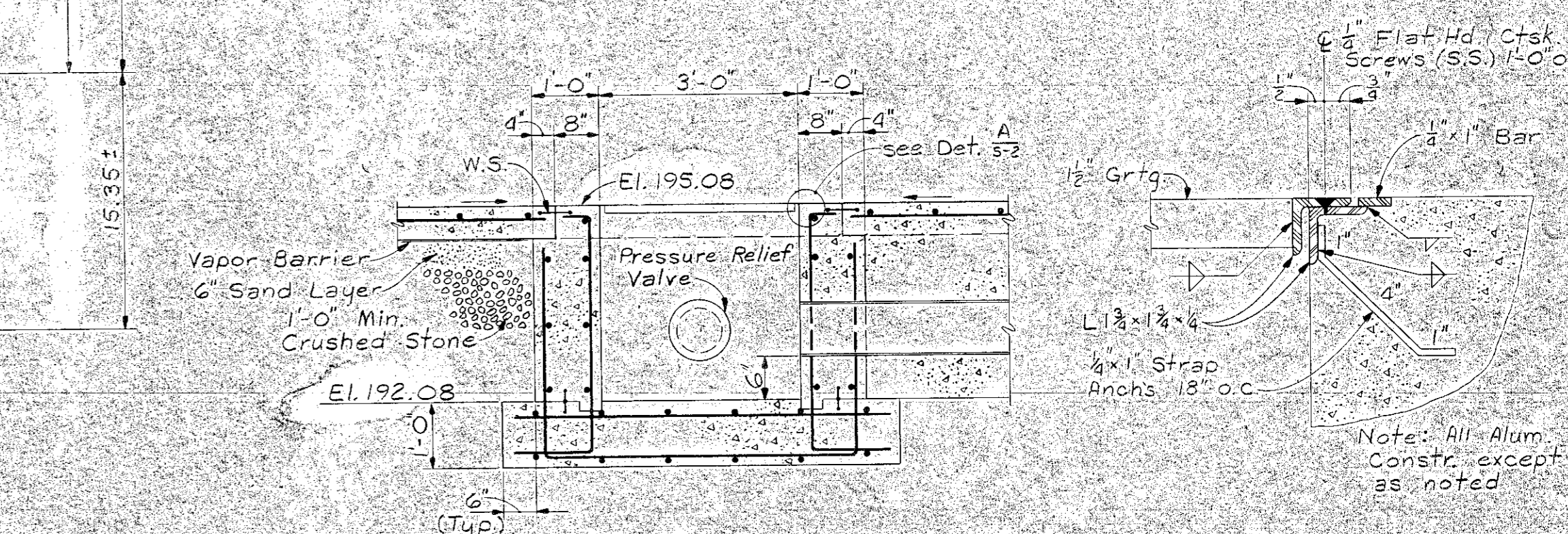
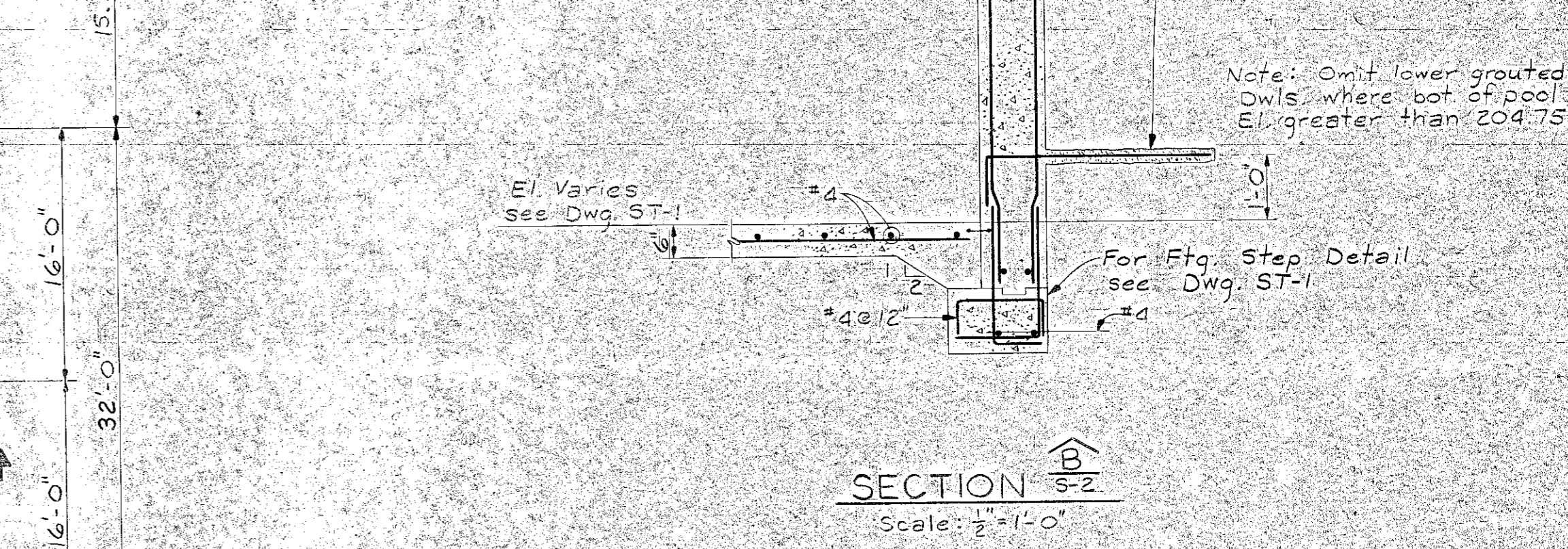
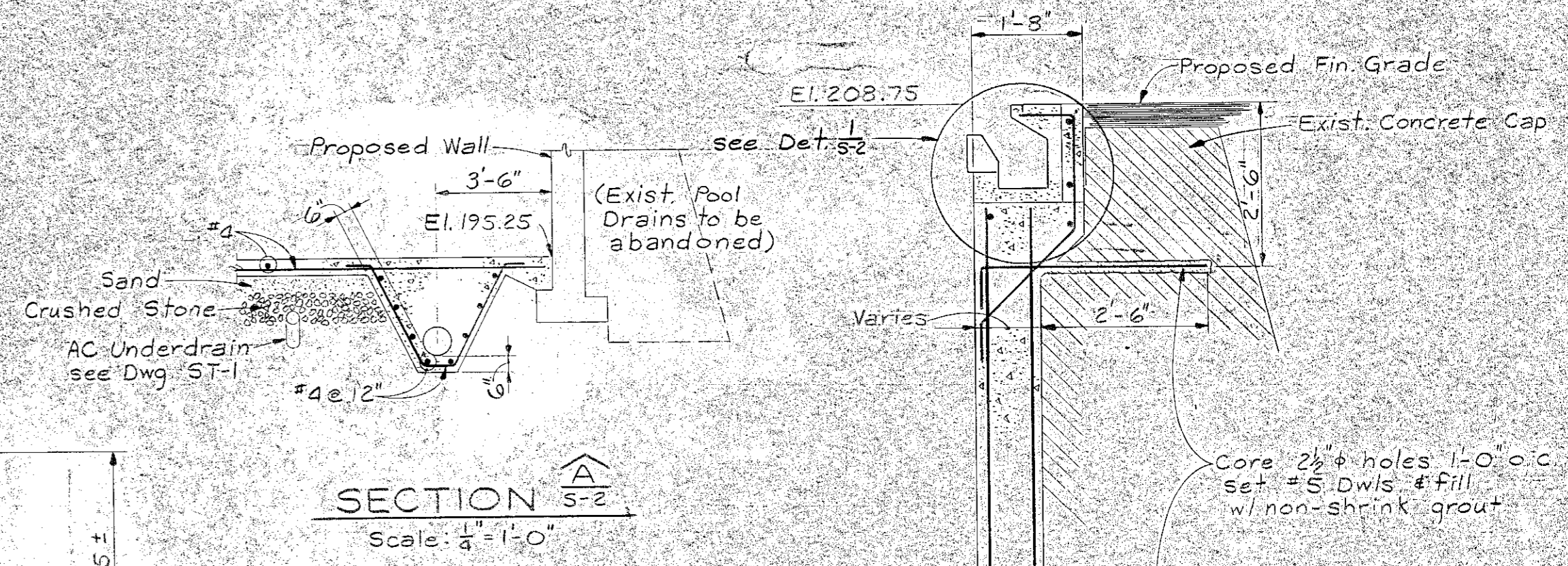
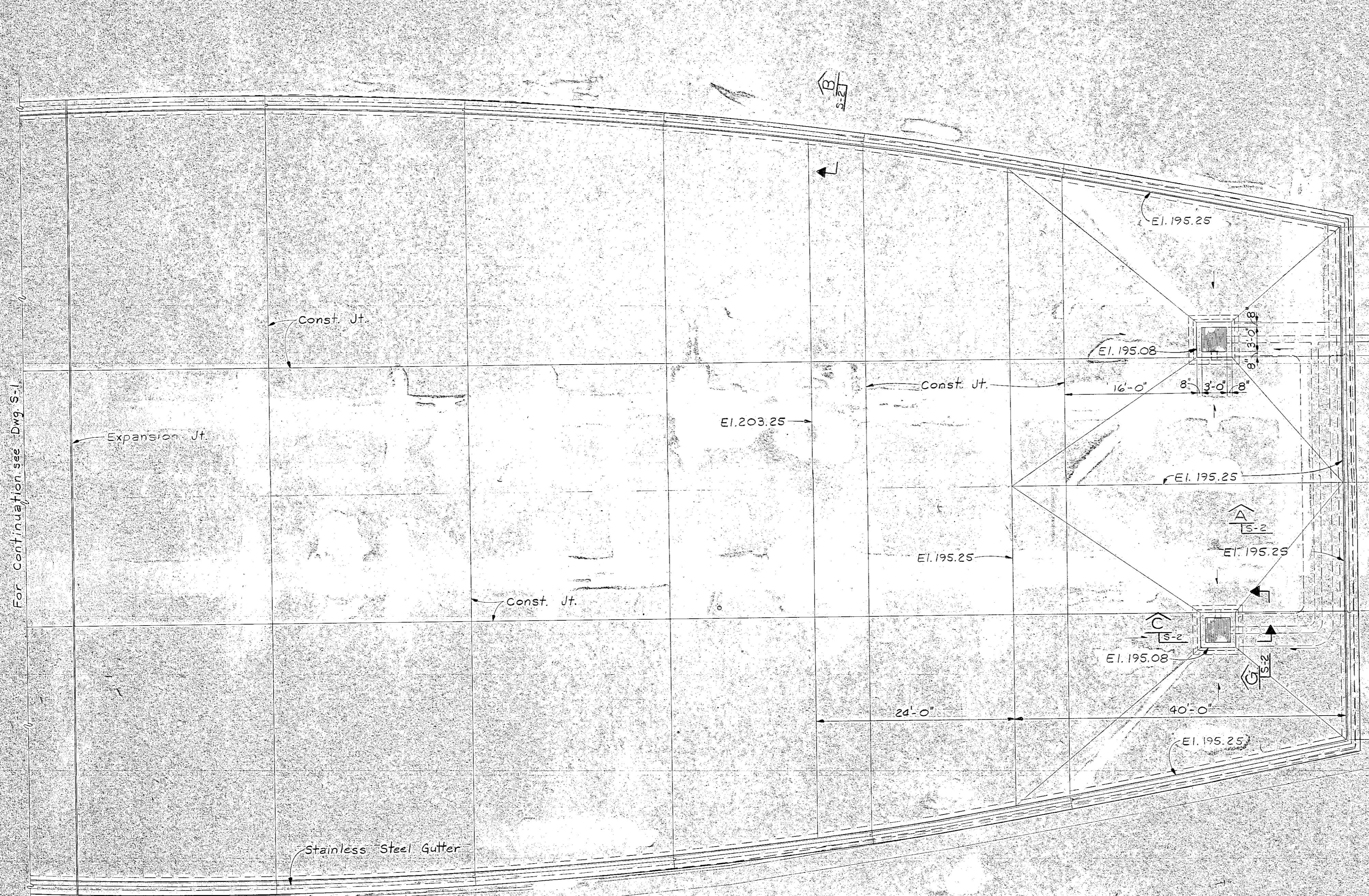
WHITMAN & HOWARD INC.
 ENGINEERS AND ARCHITECTS
 45 WILLIAM ST. WELLESLEY, MASS.

DESIGNED BY: SAG
 DRAWN BY: SEA
 CHECKED BY: SEA

SCALE: AS NOTED
 DATE: JUNE, 1978

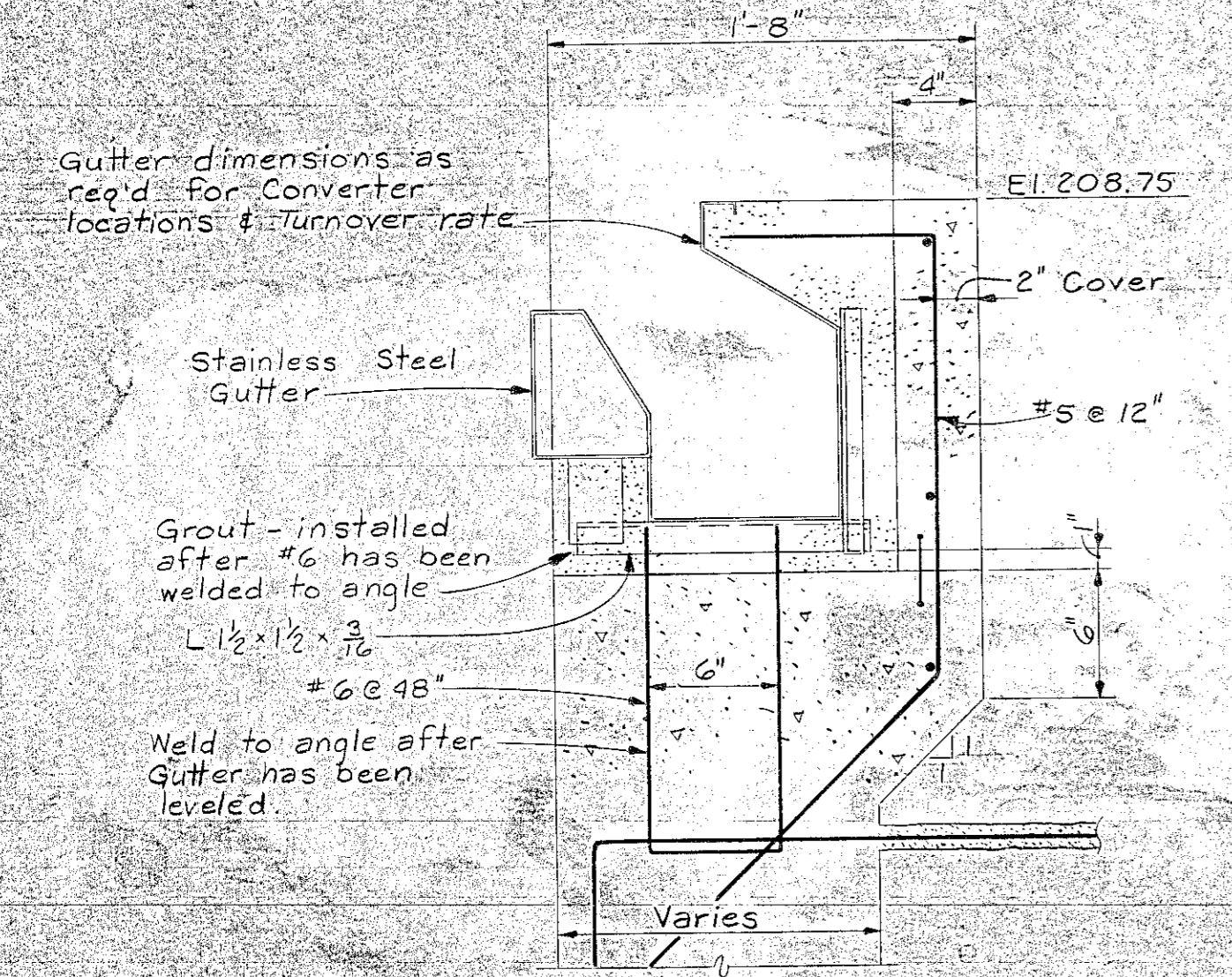
APPROVED: Anthony Chiaravelli
 REGISTERED PROFESSIONAL ENGINEER

JOB NO: 8-029
 SHEET 5 OF 10 SHEETS

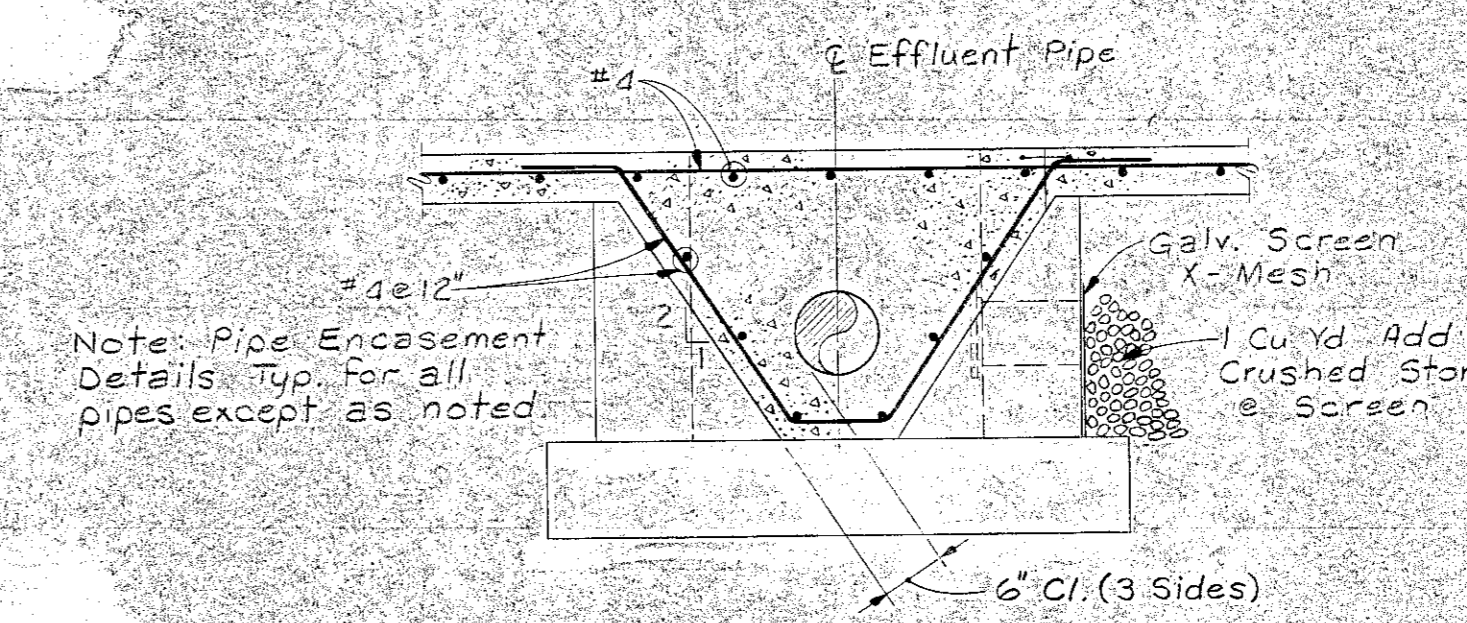


NOTES:
 1. For General Notes see Dwg. S-1.
 2. For Typical Construction & Expansion Joint Details see Dwg. S-1.
 3. For location of Construction & Expansion Joints see Dwg. ST-1.

PLAN - DEEP END
 Scale: 3/8" = 1'-0"



DETAIL S-112
 Scale: 1/2" = 1'-0"



SECTION G-G
 Scale: 3/8" = 1'-0"

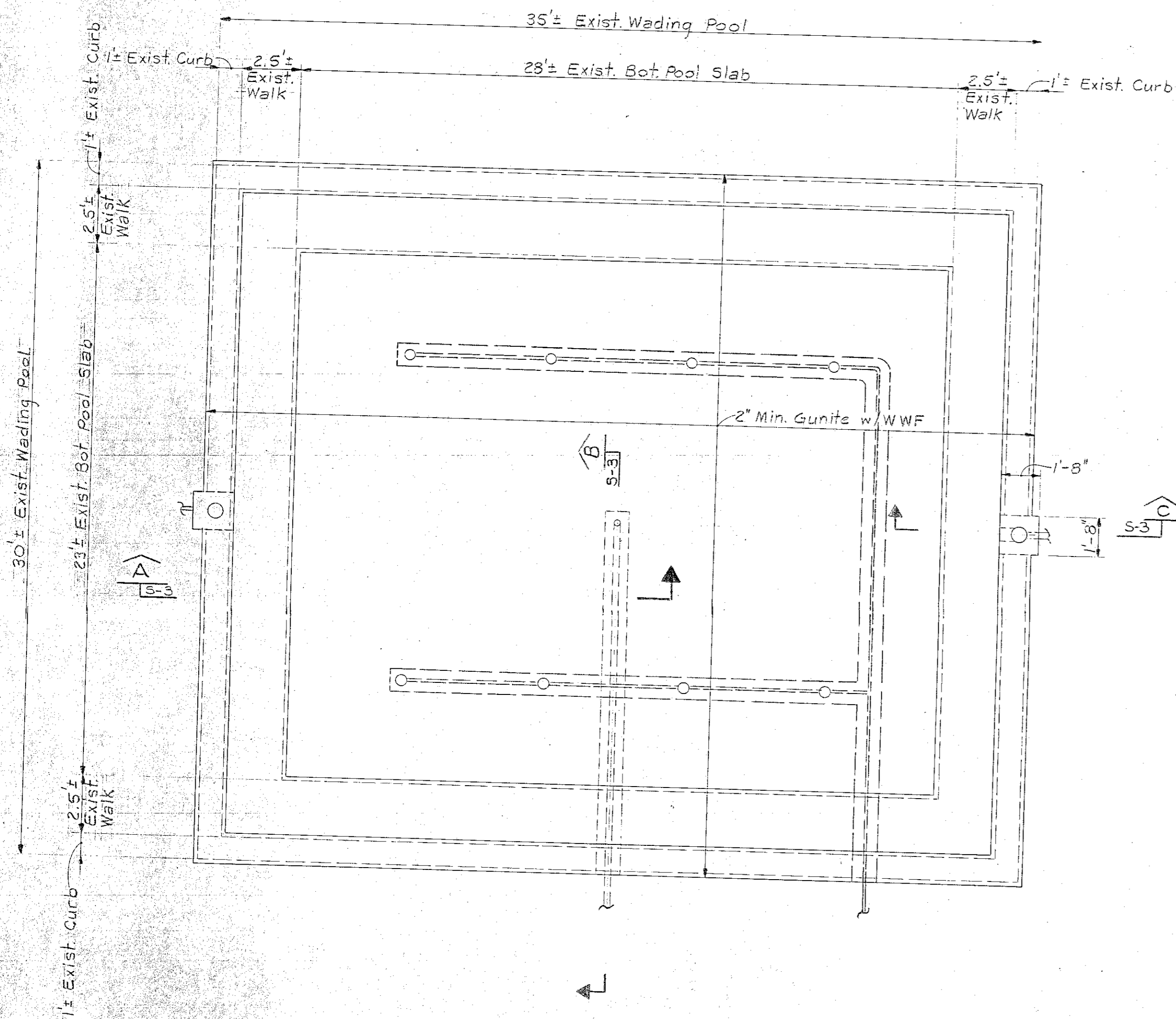
NO.	DESCRIPTION	DATE

S-2

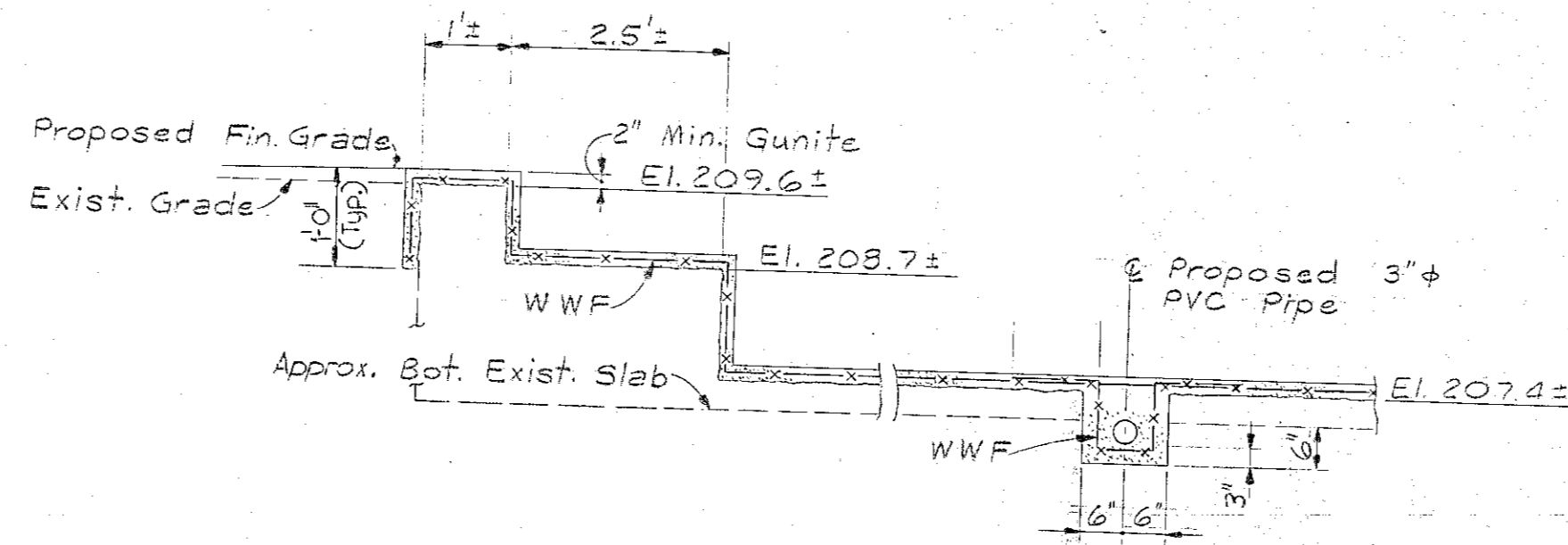
**SWIMMING FACILITIES RESTORATION
 PIERCE ISLAND
 PORTSMOUTH, N.H.**

MAIN POOL - DEEP END

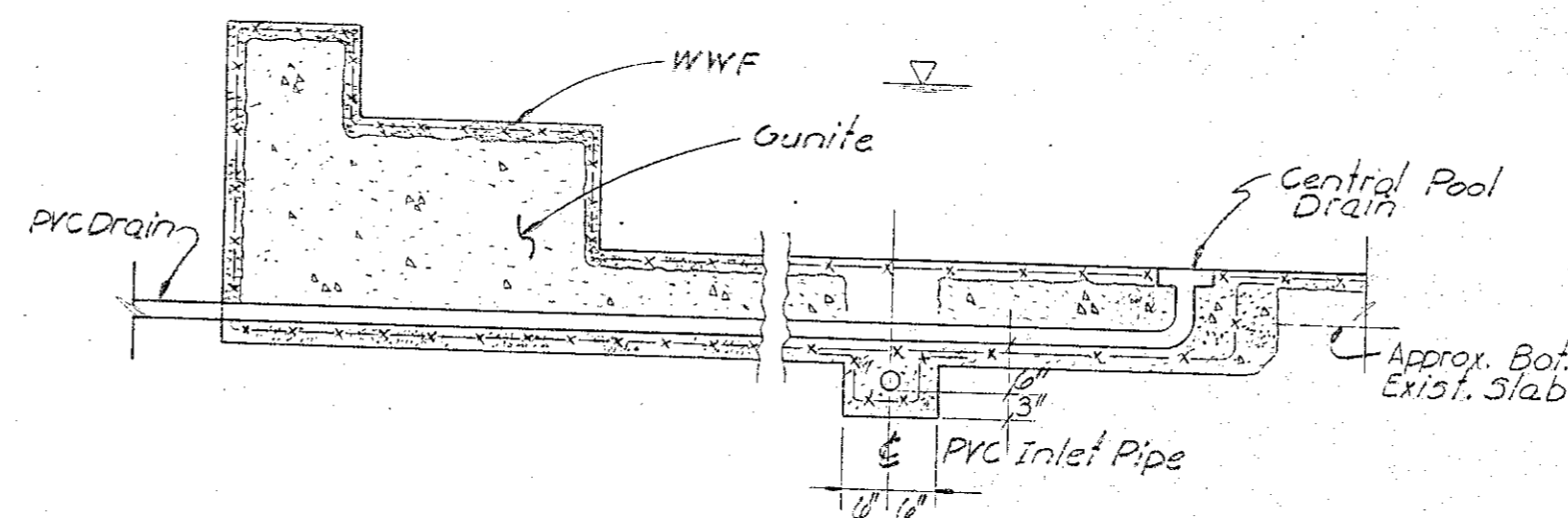
WHITMAN & HOWARD INC. ENGINEERS AND ARCHITECTS 45 WILLIAM ST. WELLESLEY, MASS.		
DESIGNED BY SAG	SCALE AS NOTED	DATE JUNE, 1978
DRAWN BY SEA	APPROVED <i>Anthony Chiaravelli</i>	
CHECKED BY SAG	JOB NO. 8-029	SHEET 6 OF 10 SHEETS



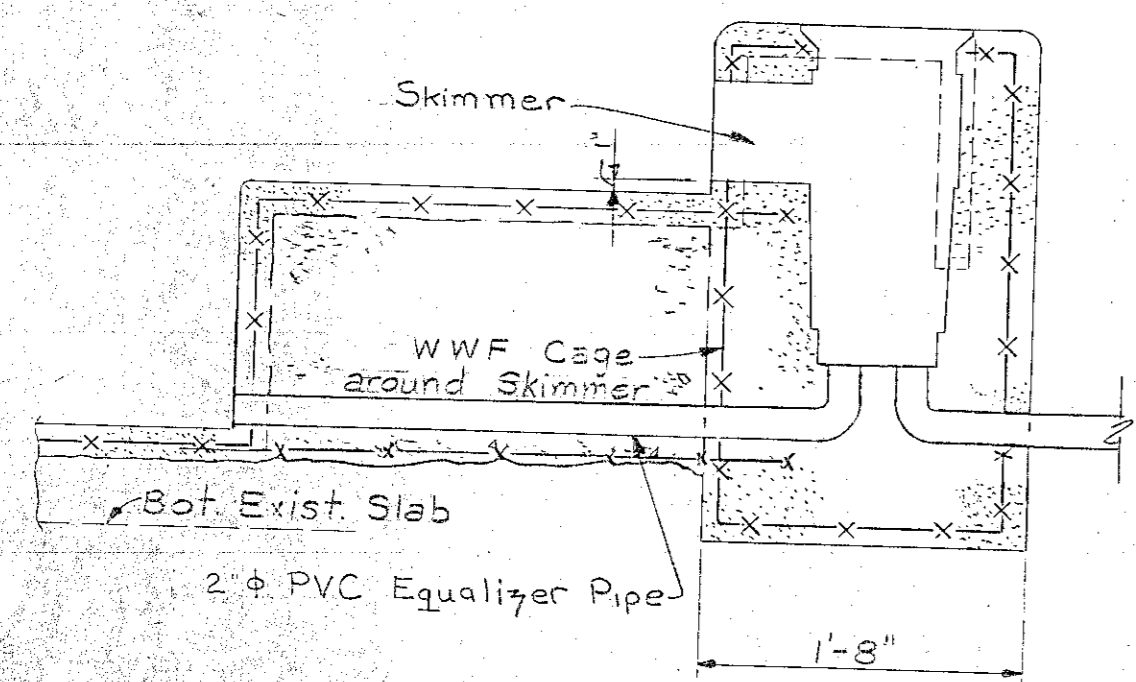
PLAN - WADING POOL
Scale: 1/4" = 1'-0"



SECTION A-A
Scale: 1/2" = 1'-0"



SECTION B-B
Scale: 1/2" = 1'-0"



SECTION C-C
Scale: 1" = 1'-0"

GENERAL NOTES

1. These notes shall apply to all structures in the project as applicable.
2. Structural Drawings (S-1, S-2, S-3) shall be used in conjunction with Location Geometry (Dwg. ST-1) and other drawings and specifications.
3. The Contractor shall examine the site thoroughly and shall notify the Engineer of any deviation from the work shown on the drawings prior to commencement of any work.
4. All dimensions of existing structures shall be field verified. Any significant variation from the dimensions shown on the drawings shall be reported to the Engineer before proceeding with any work.
5. All necessary precautions shall be taken to protect the existing pool walls from any damage during the removal of the existing slab and during the construction of the new pool walls.
6. All cast in place concrete shall have a minimum 28-day compressive strength of 4000 psi, unless otherwise noted.
7. All precast concrete shall have a minimum 28-day compressive strength of 5000 psi, unless otherwise noted.
8. Reinforcing steel for cast in place concrete shall comply with A.S.T.M. Designation A-615 Grade 40 and to the provisions of ACI 318-17, except as to minimum lap and cover. Unless otherwise noted, reinforcing splices shall be 30 diameters.
9. Use of construction joints other than those shown on the drawings will require approval of the Engineers.
10. Unless otherwise detailed, provide additional reinforcement around all openings with a dimension greater than 12 inches as follows: Using a minimum size of #5 reinforcement shall be equal in cross-sectional area to the amount interrupted with one-half of bars placed on opposite sides of the opening. Bars shall extend 30 diameters beyond the edge of opening.
11. Provide wall sleeves with intermediate wall collars at all cast iron pipe locations unless otherwise indicated.
12. Provide all necessary chairs, chair bars, spacers, etc. wired securely to hold reinforcement in position. These accessories shall be plastic coated where concrete is to be exposed to weather or moisture.
13. Structures must be protected against buoyancy at all times during construction.

NO.	DESCRIPTION	DATE

S-3

**SWIMMING FACILITIES RESTORATION
PIERCE ISLAND
PORTSMOUTH, N.H.
WADING POOL**

WHITMAN & HOWARD INC.
ENGINEERS AND ARCHITECTS
45 WILLIAM ST. WELLESLEY, MASS.

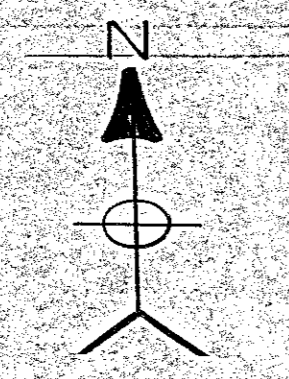
DESIGNED BY SAG	SCALE AS NOTED	DATE JUNE, 1978
DRAWN BY SEA	APPROVED <i>Anthony Howard</i>	

POOL DATA

POOL
 CAPACITY - 943,000.59 GAL
 SURFACE AREA - 24,000.55 SQ FT
 PERIMETER - 700 FT
 RECIRCULATION RATE - 1964 GPM
 TURNOVER - 8 HRS.

WADING POOL

CAPACITY - 10,500 GAL
 SURFACE AREA - 1020 SQ FT
 PERIMETER - 124 FT
 RECIRCULATION RATE - 43.75 GPM
 TURNOVER - 6 HRS



Wading Pool

2 Valve Box

2 Converters

(Main Pool)

Relocate Exist. Pool Filler Pipe Outside OF Pool

Locate Exist. Sewer Line, And Connect

See Det. C This Dwg.

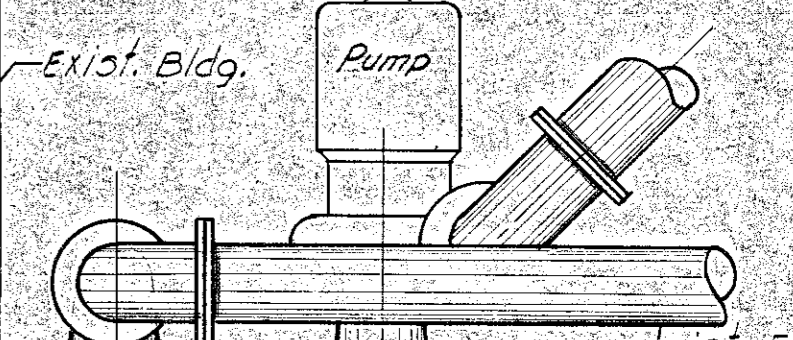
18" x 6" Topping Valve & sleeve

Exist. 8" Water Line

PLAN

SCALE: 1" = 20'

Remove Exist. Conc., Set Pipe, & Fill w/ New Concrete



DETAIL A

SCALE: 1/2" = 1'-0"

SECTION A-A

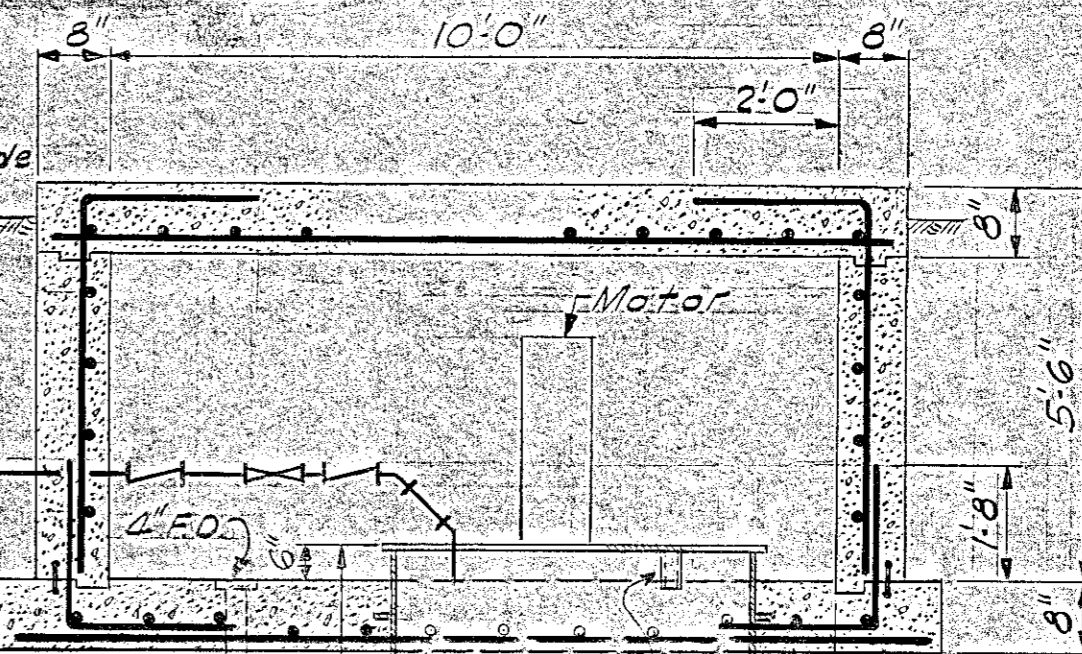
SCALE: 1/2" = 1'-0"

DETAIL B

Scale: 3/8" = 1'-0"

DETAIL C

SCALE: 3/8" = 1'-0"



Note: All Reinf. #5 @ 12" O.C. (Typ.)

M-1
 SWIMMING FACILITIES RESTORATION
 PIERCE ISLAND
 PORTSMOUTH, N.H.
 OUTSIDE PIPING

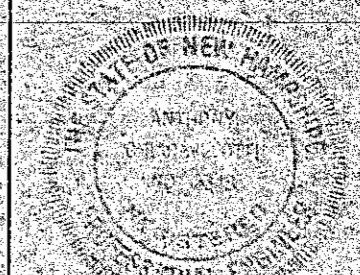
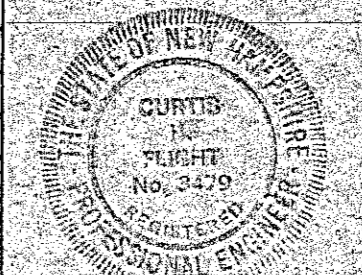
WHITMAN & HOWARD INC.

ENGINEERS AND ARCHITECTS
 45 WILLIAM ST. WELLESLEY, MASS.

DESIGNED BY: R.M. SCALE: AS NOTED DATE: JUNE, 1978

DRAWN BY: F.W. APPROVED: *Whitman & Howard*

CHECKED BY: R.M. JOB NO: 8-029 SHEET 8 OF 10 SHEETS



NO.	DESCRIPTION	DATE