

## **SECTION 4** | Programming

**SL-PED** | Location Plans  
Downtown Pedestrian



**SPECIFICATIONS**

Refer to the Wayfinding and Signage System design intent documentation for sign type drawings, material call-outs and installation methods.

Refer to the Wayfinding and Signage System message schedule for all sign type messages, location numbers, quantities, and specific location details.

SIGNAGE LEGEND	
<b>100</b>	Vehicular
<b>700</b>	Pedestrian Directional
<b>800</b>	Pedestrian Directional
<b>900</b>	Trail Signage

**NOTES:**

1. General sign locations are provided on these plan sheets.
2. The Message Schedule provides more detailed guidance of sign location in the Remarks column.
3. Refer to the Message Schedule for the final messages of each sign.
4. Utilize the above Legend to help determine sign types, and other details of location.

ENVIRONMENTS & EXPERIENCES

**merJe**

5 W. Gay Street  
West Chester, PA 19380  
T 484.266.0648  
[www.merjedesign.com](http://www.merjedesign.com)

DATE 02/13/24

DRAWN BY: GS

These drawings are meant for DESIGN INTENT ONLY and are not for construction. Contractor shall verify and be responsible for all dimensions and conditions of the job. Contractor shall be familiar with the site and conditions it presents. This office must be notified of any variations from the dimensions and conditions shown on this drawing. Shop drawings and details must be submitted to this office for approval prior to proceeding with fabrication. All copy shall be proofread by client and legal requirements checked by legal department.

REVISIONS V2\_03/13/24

CLIENT / PROJECT

**PORTSMOUTH NH**  
Wayfinding and Signage System  
PHASE 4

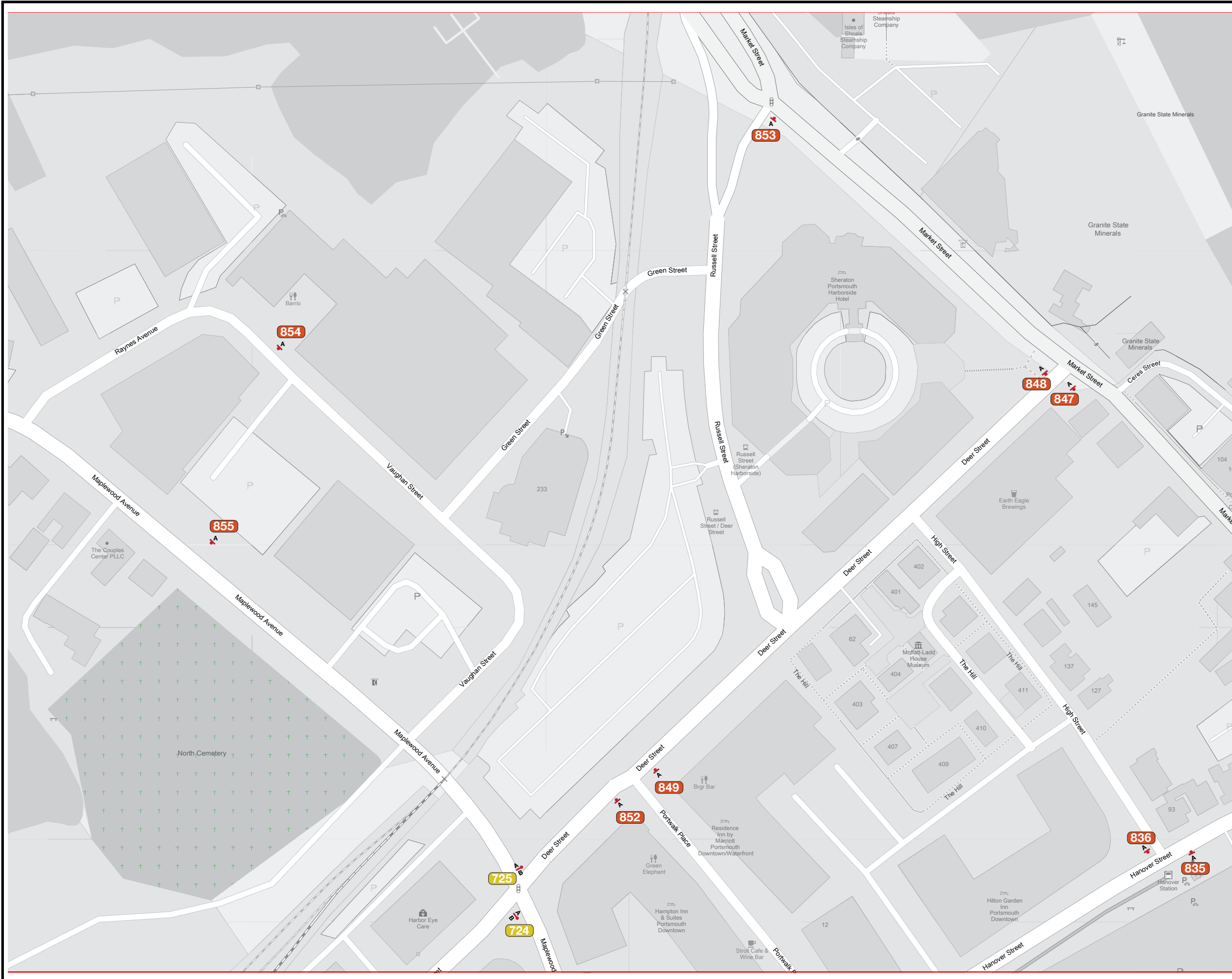
PROJECT NO.

SHEET TITLE

**Sign Location Plans  
DOWNTOWN  
Pedestrian**

SHEET NO.

**KEY**



**SPECIFICATIONS**

Refer to the Wayfinding and Signage System design intent documentation for sign type drawings, material call-outs and installation methods.

Refer to the Wayfinding and Signage System message schedule for all sign type messages, location numbers, quantities, and specific location details.

**SIGNAGE LEGEND**

- 100 Vehicular
- 700 Pedestrian Directional
- 800 Pedestrian Directional
- 900 Trail Signage

- NOTES:**
- General sign locations are provided on these plan sheets.
  - The Message Schedule provides more detailed guidance of sign location in the Remarks column.
  - Refer to the Message Schedule for the final messages of each sign.
  - Utilize the above Legend to help determine sign types, and other details of location.

ENVIRONMENTS & EXPERIENCES

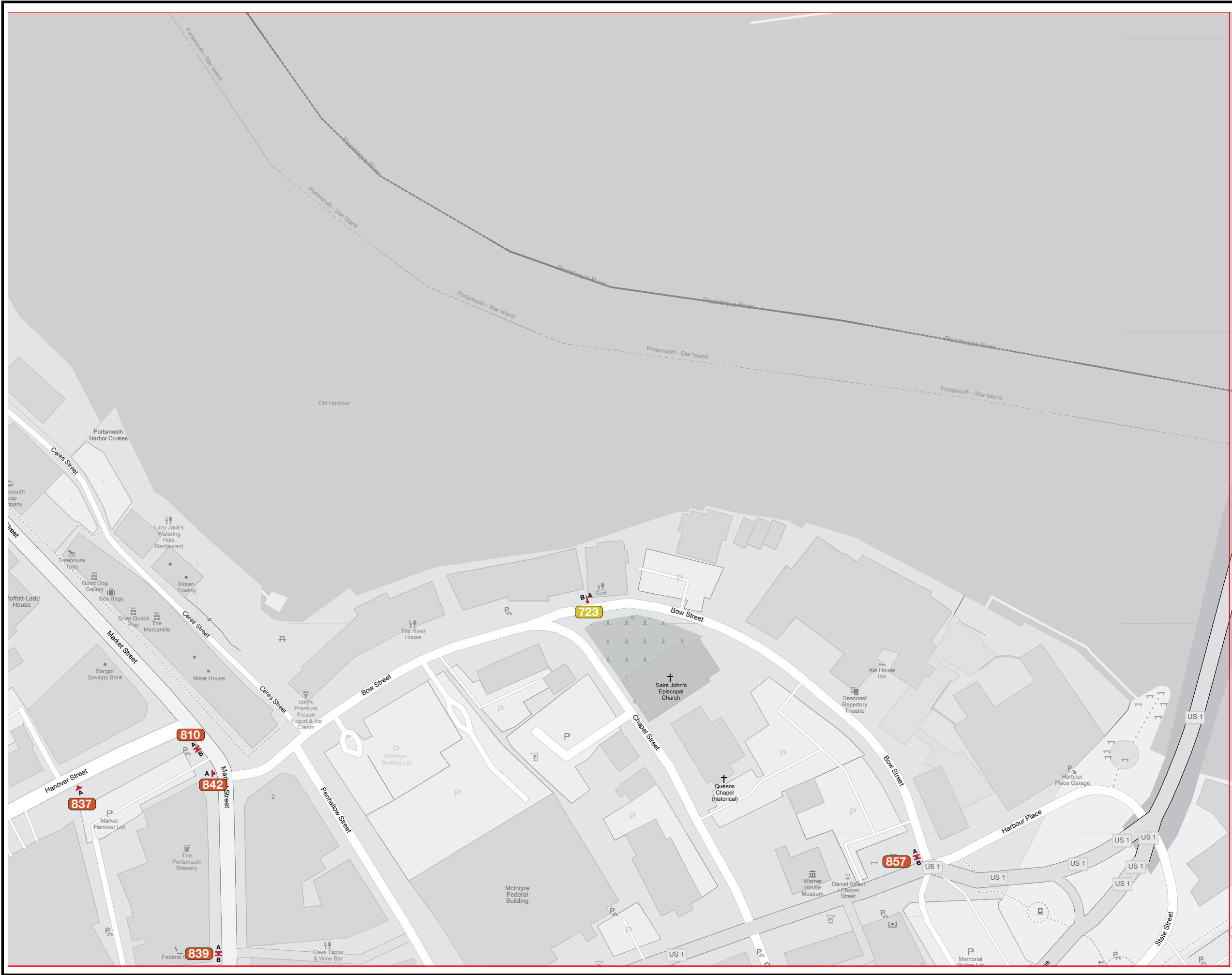
**merJe**

5 W. Gay Street  
West Chester, PA 19380  
T 484.266.0648  
[www.merjedesign.com](http://www.merjedesign.com)

DATE	02/13/24
DRAWN BY:	GS
<p>These drawings are meant for DESIGN INTENT ONLY and are not for construction. Contractor shall verify and be responsible for all dimensions and conditions of the job. Contractor shall be familiar with the site and conditions it presents. This office must be notified of any variations from the dimensions and conditions shown on this drawing. Shop drawings and details must be submitted to this office for approval prior to proceeding with fabrication. All copy shall be proofread by client and legal requirements checked by legal department.</p>	
REVISIONS	V2_03/13/24

CLIENT / PROJECT	<b>PORTSMOUTH NH</b> Wayfinding and Signage System PHASE 4
PROJECT NO.	
SHEET TITLE	<b>Sign Location Plans DOWNTOWN Pedestrian</b>
SHEET NO.	

**SL.1**



**SPECIFICATIONS**

Refer to the Wayfinding and Signage System design intent documentation for sign type drawings, material call-outs and installation methods.

Refer to the Wayfinding and Signage System message schedule for all sign type messages, location numbers, quantities, and specific location details.

**SIGNAGE LEGEND**

- 100 Vehicular
- 700 Pedestrian Directional
- 800 Pedestrian Directional
- 900 Trail Signage

- NOTES:**
1. General sign locations are provided on these plan sheets.
  2. The Message Schedule provides more detailed guidance of sign location in the Remarks column.
  3. Refer to the Message Schedule for the final messages of each sign.
  4. Utilize the above Legend to help determine sign types, and other details of location.

ENVIRONMENTS & EXPERIENCES

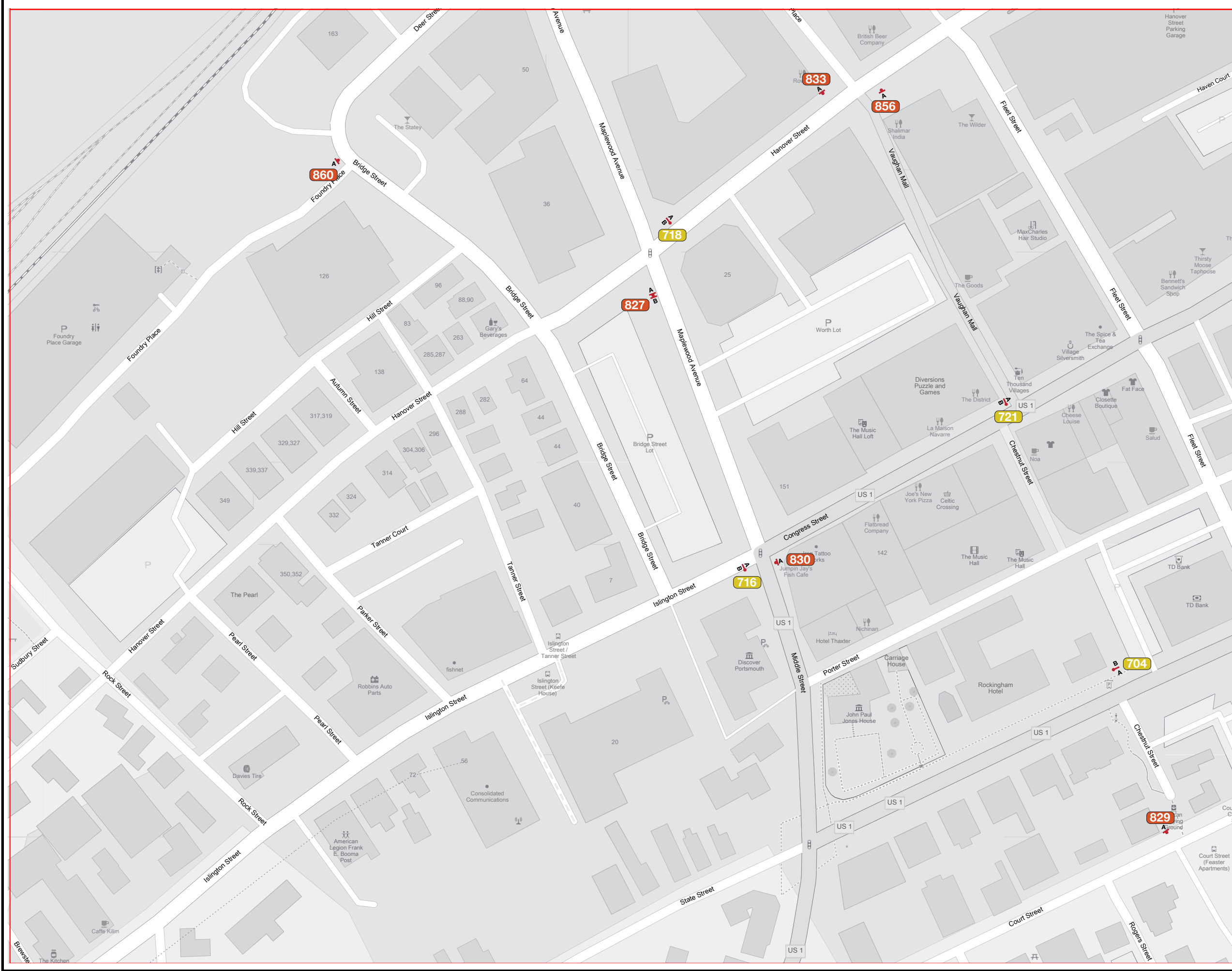
**merJe**  
 5 W. Gay Street  
 West Chester, PA 19380  
 T 484.266.0648  
[www.merjedesign.com](http://www.merjedesign.com)

DATE	02/13/24
DRAWN BY:	GS
These drawings are meant for DESIGN INTENT ONLY and are not for construction. Contractor shall verify and be responsible for all dimensions and conditions of the job. Contractor shall be familiar with the site and conditions it presents. This office must be notified of any variations from the dimensions and conditions shown on this drawing. Shop drawings and details must be submitted to this office for approval prior to proceeding with fabrication. All copy shall be proofread by client and legal requirements checked by legal department.	
REVISIONS	V2_03/13/24

CLIENT / PROJECT  
**PORTSMOUTH NH**  
 Wayfinding and Signage System  
 PHASE 4

PROJECT NO.  
 SHEET TITLE  
**Sign Location Plans  
 DOWNTOWN  
 Pedestrian**

SHEET NO.  
SL.2



**SPECIFICATIONS**

Refer to the Wayfinding and Signage System design intent documentation for sign type drawings, material call-outs and installation methods.

Refer to the Wayfinding and Signage System message schedule for all sign type messages, location numbers, quantities, and specific location details.

**SIGNAGE LEGEND**

- 100 Vehicular
- 700 Pedestrian Directional
- 800 Pedestrian Directional
- 900 Trail Signage

- NOTES:**
1. General sign locations are provided on these plan sheets.
  2. The Message Schedule provides more detailed guidance of sign location in the Remarks column.
  3. Refer to the Message Schedule for the final messages of each sign.
  4. Utilize the above Legend to help determine sign types, and other details of location.

ENVIRONMENTS & EXPERIENCES

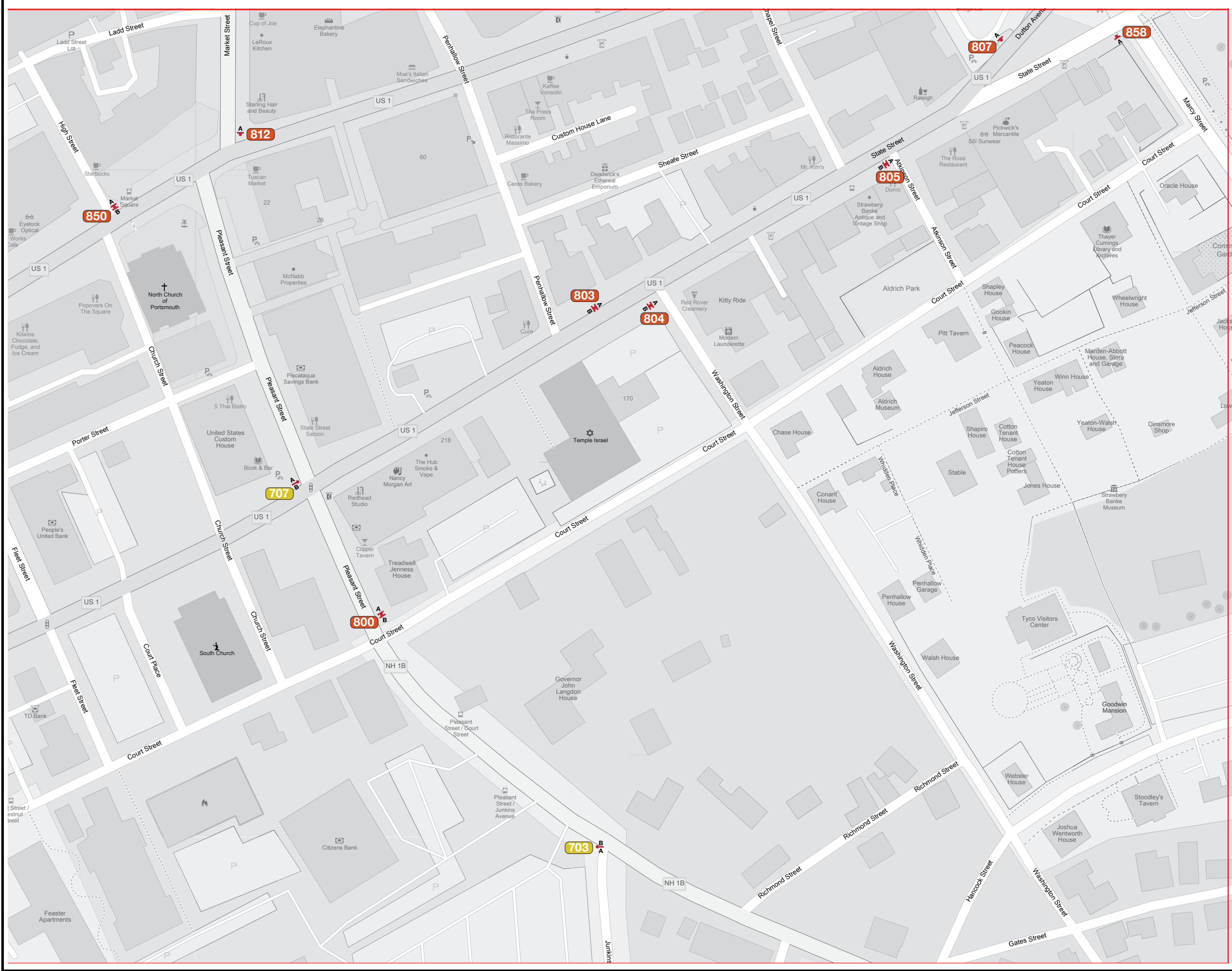
**merJe**

5 W. Gay Street  
West Chester, PA 19380  
T 484.266.0648  
[www.merjedesign.com](http://www.merjedesign.com)

DATE	02/13/24
DRAWN BY:	GS
<p>These drawings are meant for DESIGN INTENT ONLY and are not for construction. Contractor shall verify and be responsible for all dimensions and conditions of the job. Contractor shall be familiar with the site and conditions it presents. This office must be notified of any variations from the dimensions and conditions shown on this drawing. Shop drawings and details must be submitted to this office for approval prior to proceeding with fabrication. All copy shall be proofread by client and legal requirements checked by legal department.</p>	
REVISIONS	V2_03/13/24

CLIENT / PROJECT	<b>PORTSMOUTH NH</b> Wayfinding and Signage System PHASE 4
PROJECT NO.	
SHEET TITLE	<b>Sign Location Plans DOWNTOWN Pedestrian</b>
SHEET NO.	

**SL.3**



**SPECIFICATIONS**

Refer to the Wayfinding and Signage System design intent documentation for sign type drawings, material call-outs and installation methods.

Refer to the Wayfinding and Signage System message schedule for all sign type messages, location numbers, quantities, and specific location details.

**SIGNAGE LEGEND**

- 100 Vehicular
- 700 Pedestrian Directional
- 800 Pedestrian Directional
- 900 Trail Signage

**NOTES:**

1. General sign locations are provided on these plan sheets.
2. The Message Schedule provides more detailed guidance of sign location in the Remarks column.
3. Refer to the Message Schedule for the final messages of each sign.
4. Utilize the above Legend to help determine sign types, and other details of location.

**ENVIRONMENTS & EXPERIENCES**

**merJe** 5 W. Gay Street  
 West Chester, PA 19380  
 T 484.266.0648  
[www.merjedesign.com](http://www.merjedesign.com)

DATE	02/13/24
DRAWN BY:	GS
<p>These drawings are meant for DESIGN INTENT ONLY and are not for construction. Contractor shall verify and be responsible for all dimensions and conditions of the job. Contractor shall be familiar with the site and conditions it presents. This office must be notified of any variations from the dimensions and conditions shown on this drawing. Shop drawings and details must be submitted to this office for approval prior to proceeding with fabrication. All copy shall be proofread by client and legal requirements checked by legal department.</p>	
REVISIONS	V2_03/13/24

CLIENT / PROJECT	<b>PORTSMOUTH NH</b> Wayfinding and Signage System PHASE 4
PROJECT NO.	
SHEET TITLE	<b>Sign Location Plans DOWNTOWN Pedestrian</b>
SHEET NO.	

**SL.4**



**SPECIFICATIONS**

Refer to the Wayfinding and Signage System design intent documentation for sign type drawings, material call-outs and installation methods.

Refer to the Wayfinding and Signage System message schedule for all sign type messages, location numbers, quantities, and specific location details.

**SIGNAGE LEGEND**

- 100 Vehicular
- 700 Pedestrian Directional
- 800 Pedestrian Directional
- 900 Trail Signage

**NOTES:**

1. General sign locations are provided on these plan sheets.
2. The Message Schedule provides more detailed guidance of sign location in the Remarks column.
3. Refer to the Message Schedule for the final messages of each sign.
4. Utilize the above Legend to help determine sign types, and other details of location.

ENVIRONMENTS & EXPERIENCES

**merJe**

5 W. Gay Street  
 West Chester, PA 19380  
 T 484.266.0648  
[www.merjedesign.com](http://www.merjedesign.com)

DATE 02/13/24

CLIENT / PROJECT

DRAWN BY: GS

**PORTSMOUTH NH**  
 Wayfinding and Signage System  
 PHASE 4

These drawings are meant for DESIGN INTENT ONLY and are not for construction. Contractor shall verify and be responsible for all dimensions and conditions of the job. Contractor shall be familiar with the site and conditions it presents. This office must be notified of any variations from the dimensions and conditions shown on this drawing. Shop drawings and details must be submitted to this office for approval prior to proceeding with fabrication. All copy shall be proofread by client and legal requirements checked by legal department.

PROJECT NO.

SHEET TITLE  
**Sign Location Plans  
 DOWNTOWN  
 Pedestrian**

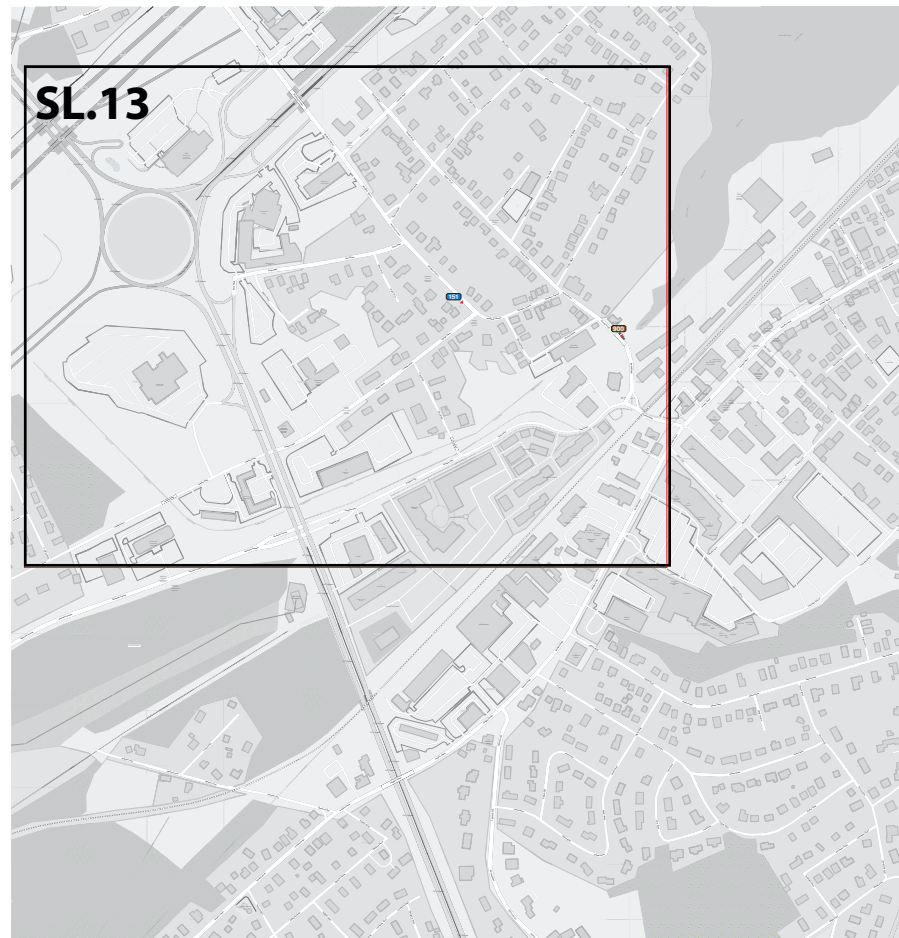
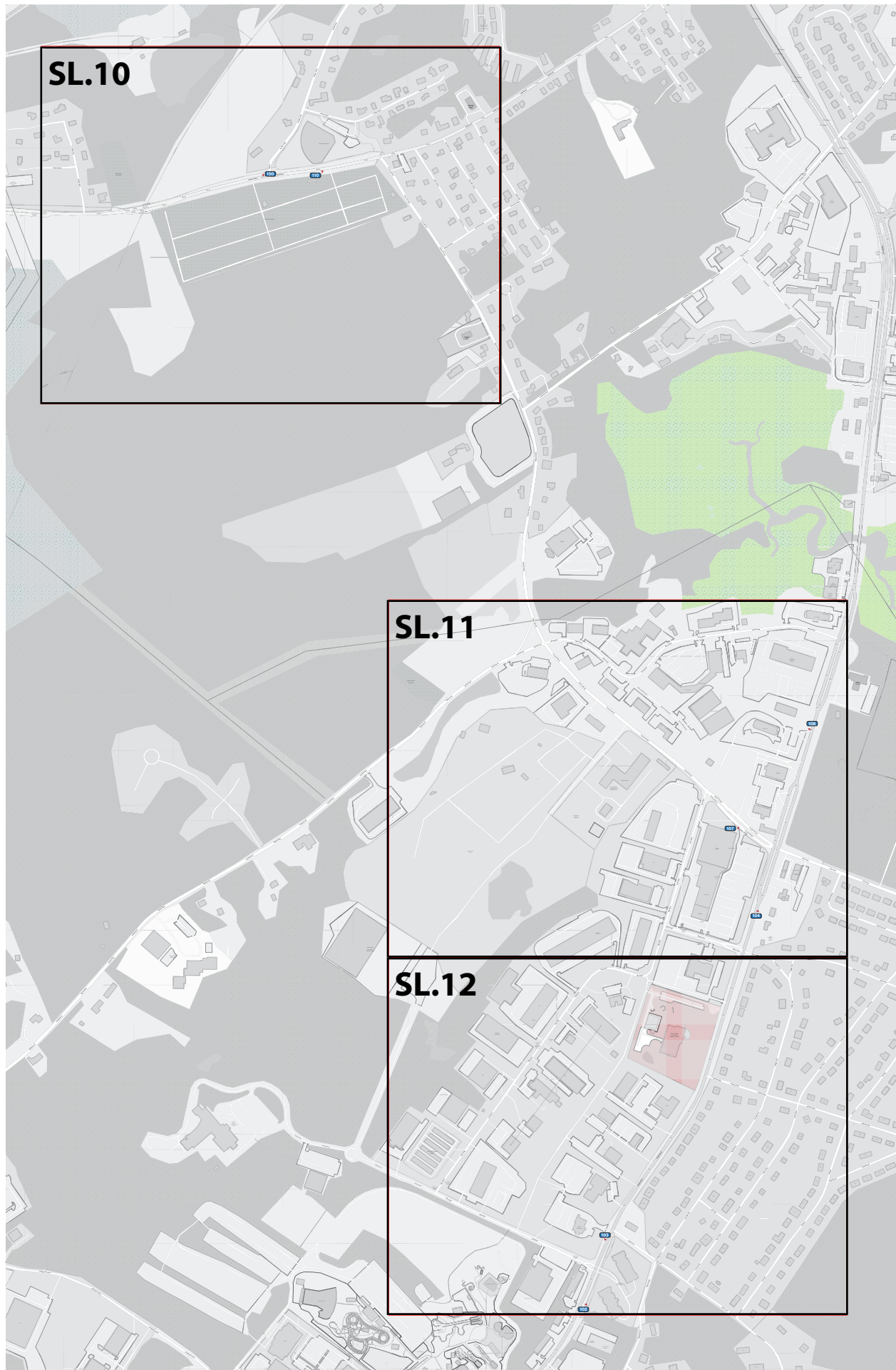
REVISIONS V2\_03/13/24

SHEET NO.

**SL.5**



**SL-VDIR** | Location Plans  
Vehicular / Trails



**SPECIFICATIONS**

Refer to the Wayfinding and Signage System design intent documentation for sign type drawings, material call-outs and installation methods.

Refer to the Wayfinding and Signage System message schedule for all sign type messages, location numbers, quantities, and specific location details.

SIGNAGE LEGEND	
<b>100</b>	Vehicular
<b>700</b>	Pedestrian Directional
<b>800</b>	Pedestrian Directional
<b>900</b>	Trail Signage

**NOTES:**

1. General sign locations are provided on these plan sheets.
2. The Message Schedule provides more detailed guidance of sign location in the Remarks column.
3. Refer to the Message Schedule for the final messages of each sign.
4. Utilize the above Legend to help determine sign types, and other details of location.

ENVIRONMENTS & EXPERIENCES

**merJe**

5 W. Gay Street  
West Chester, PA 19380  
T 484.266.0648  
[www.merjedesign.com](http://www.merjedesign.com)

DATE 02/13/24

DRAWN BY: GS

These drawings are meant for DESIGN INTENT ONLY and are not for construction. Contractor shall verify and be responsible for all dimensions and conditions of the job. Contractor shall be familiar with the site and conditions it presents. This office must be notified of any variations from the dimensions and conditions shown on this drawing. Shop drawings and details must be submitted to this office for approval prior to proceeding with fabrication. All copy shall be proofread by client and legal requirements checked by legal department.

REVISIONS V2\_03/13/24

CLIENT / PROJECT

**PORTSMOUTH NH**  
Wayfinding and Signage System  
PHASE 4

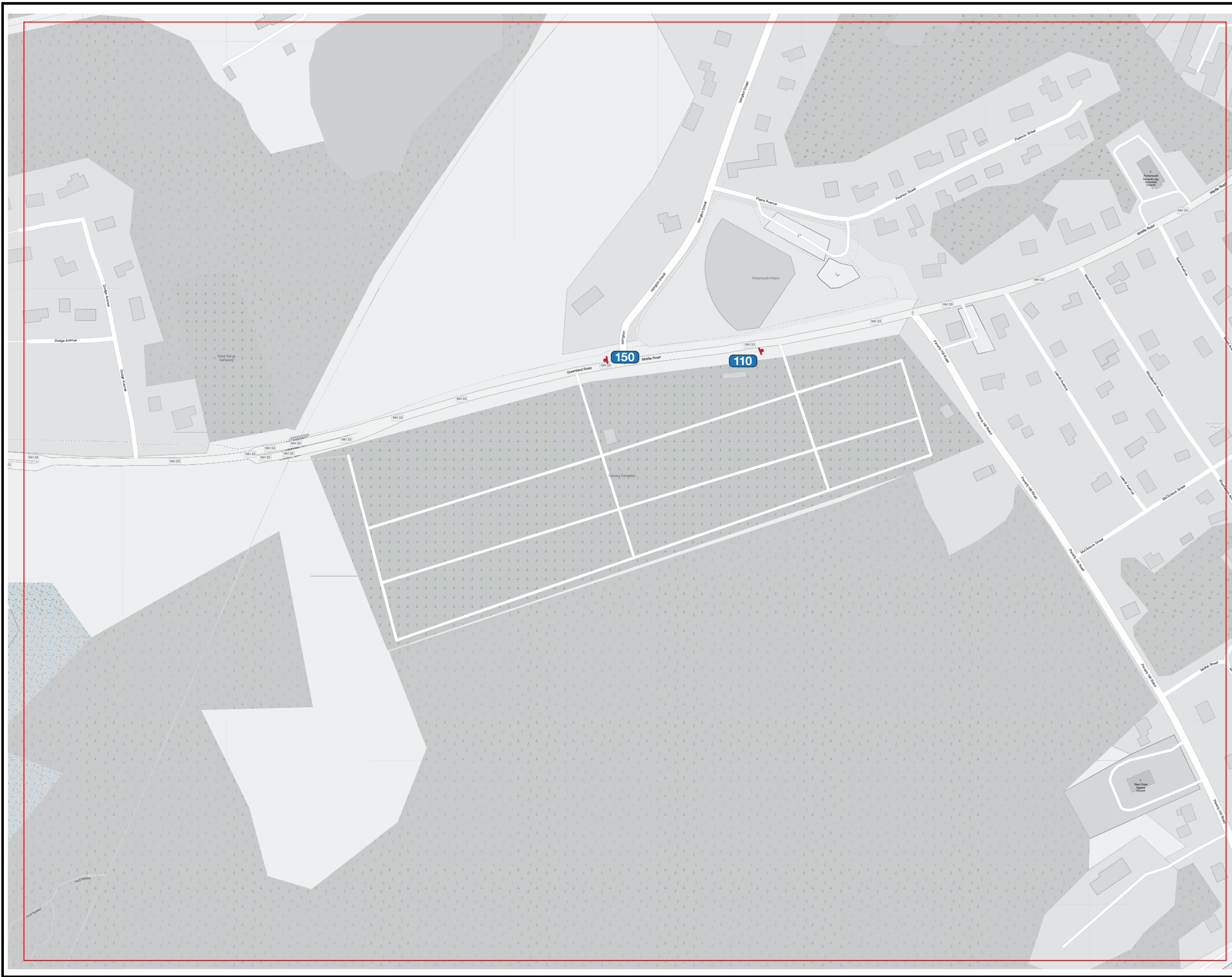
PROJECT NO.

SHEET TITLE

**Vehicular Key**

SHEET NO.

**KEY**



**SPECIFICATIONS**

Refer to the Wayfinding and Signage System design intent documentation for sign type drawings, material call-outs and installation methods.

Refer to the Wayfinding and Signage System message schedule for all sign type messages, location numbers, quantities, and specific location details.

**SIGNAGE LEGEND**

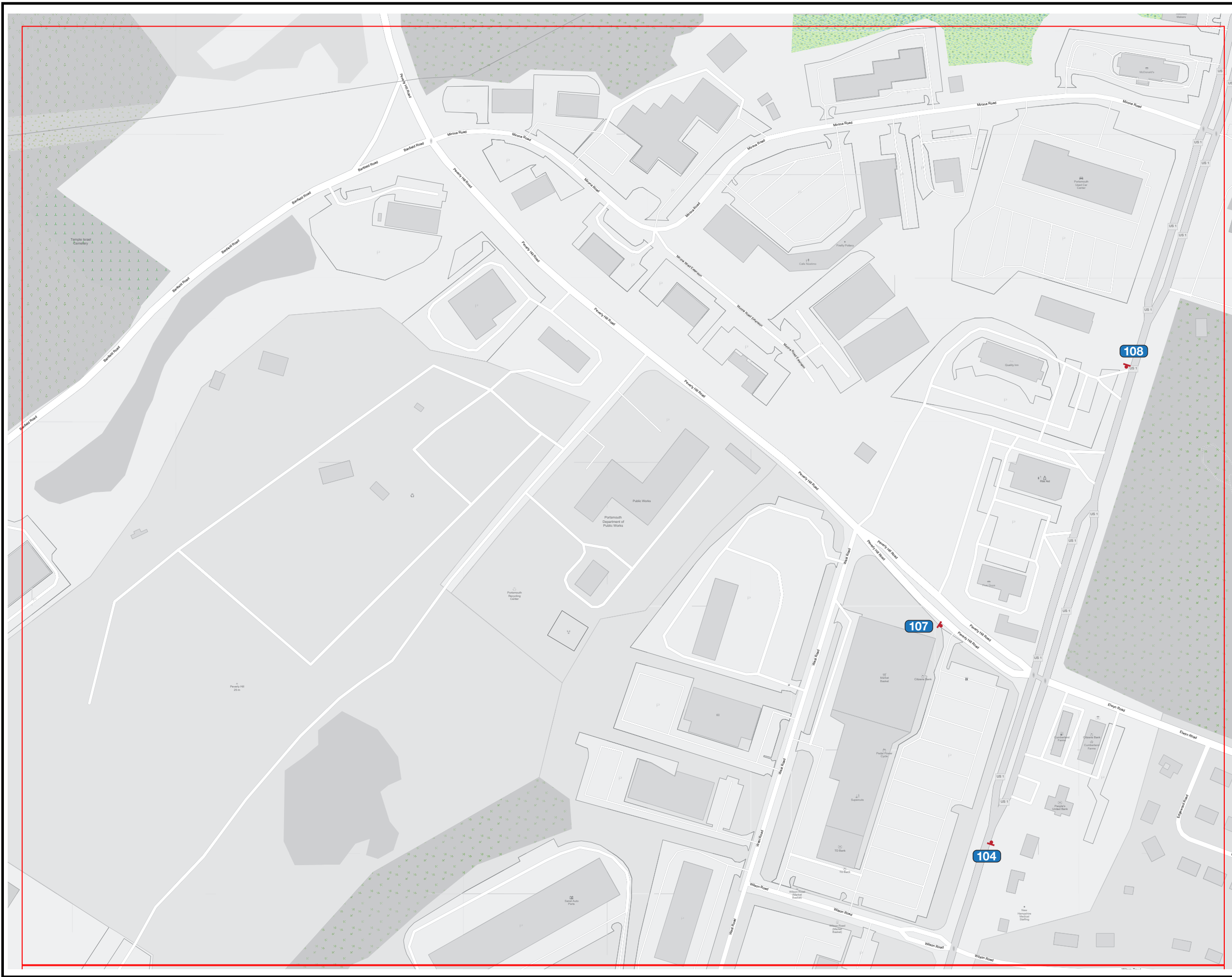
- 100 Vehicular
- 700 Pedestrian Directional
- 800 Pedestrian Directional
- 900 Trail Signage

- NOTES:**
- General sign locations are provided on these plan sheets.
  - The Message Schedule provides more detailed guidance of sign location in the Remarks column.
  - Refer to the Message Schedule for the final messages of each sign.
  - Utilize the above Legend to help determine sign types, and other details of location.

ENVIRONMENTS & EXPERIENCES

**merJe** 5 W. Gay Street  
West Chester, PA 19380  
T 484.266.0648  
[www.merjedesign.com](http://www.merjedesign.com)

DATE	02/13/24	CLIENT / PROJECT
DRAWN BY:	GS	<b>PORTSMOUTH NH</b> Wayfinding and Signage System PHASE 4
<p style="font-size: 8px;">These drawings are meant for DESIGN INTENT ONLY and are not for construction. Contractor shall verify and be responsible for all dimensions and conditions of the job. Contractor shall be familiar with the site and conditions it presents. This office must be notified of any variations from the dimensions and conditions shown on this drawing. Shop drawings and details must be submitted to this office for approval prior to proceeding with fabrication. All copy shall be proofread by client and legal requirements checked by legal department.</p>		PROJECT NO.
		SHEET TITLE
REVISIONS	V2_03/13/24	<b>Sign Location Plans Vehicular/Trails</b>
		SHEET NO.
		<b>SL.10</b>



**SPECIFICATIONS**

Refer to the Wayfinding and Signage System design intent documentation for sign type drawings, material call-outs and installation methods.

Refer to the Wayfinding and Signage System message schedule for all sign type messages, location numbers, quantities, and specific location details.

**SIGNAGE LEGEND**

- 100 Vehicular
- 700 Pedestrian Directional
- 800 Pedestrian Directional
- 900 Trail Signage

**NOTES:**

1. General sign locations are provided on these plan sheets.
2. The Message Schedule provides more detailed guidance of sign location in the Remarks column.
3. Refer to the Message Schedule for the final messages of each sign.
4. Utilize the above Legend to help determine sign types, and other details of location.

**ENVIRONMENTS & EXPERIENCES**

**merJe** 5 W. Gay Street  
 West Chester, PA 19380  
 T 484.266.0648  
[www.merjedesign.com](http://www.merjedesign.com)

DATE 02/13/24

CLIENT / PROJECT

DRAWN BY: GS

**PORTSMOUTH NH**  
 Wayfinding and Signage System  
 PHASE 4

These drawings are meant for DESIGN INTENT ONLY and are not for construction. Contractor shall verify and be responsible for all dimensions and conditions of the job. Contractor shall be familiar with the site and conditions it presents. This office must be notified of any variations from the dimensions and conditions shown on this drawing. Shop drawings and details must be submitted to this office for approval prior to proceeding with fabrication. All copy shall be proofread by client and legal requirements checked by legal department.

PROJECT NO.

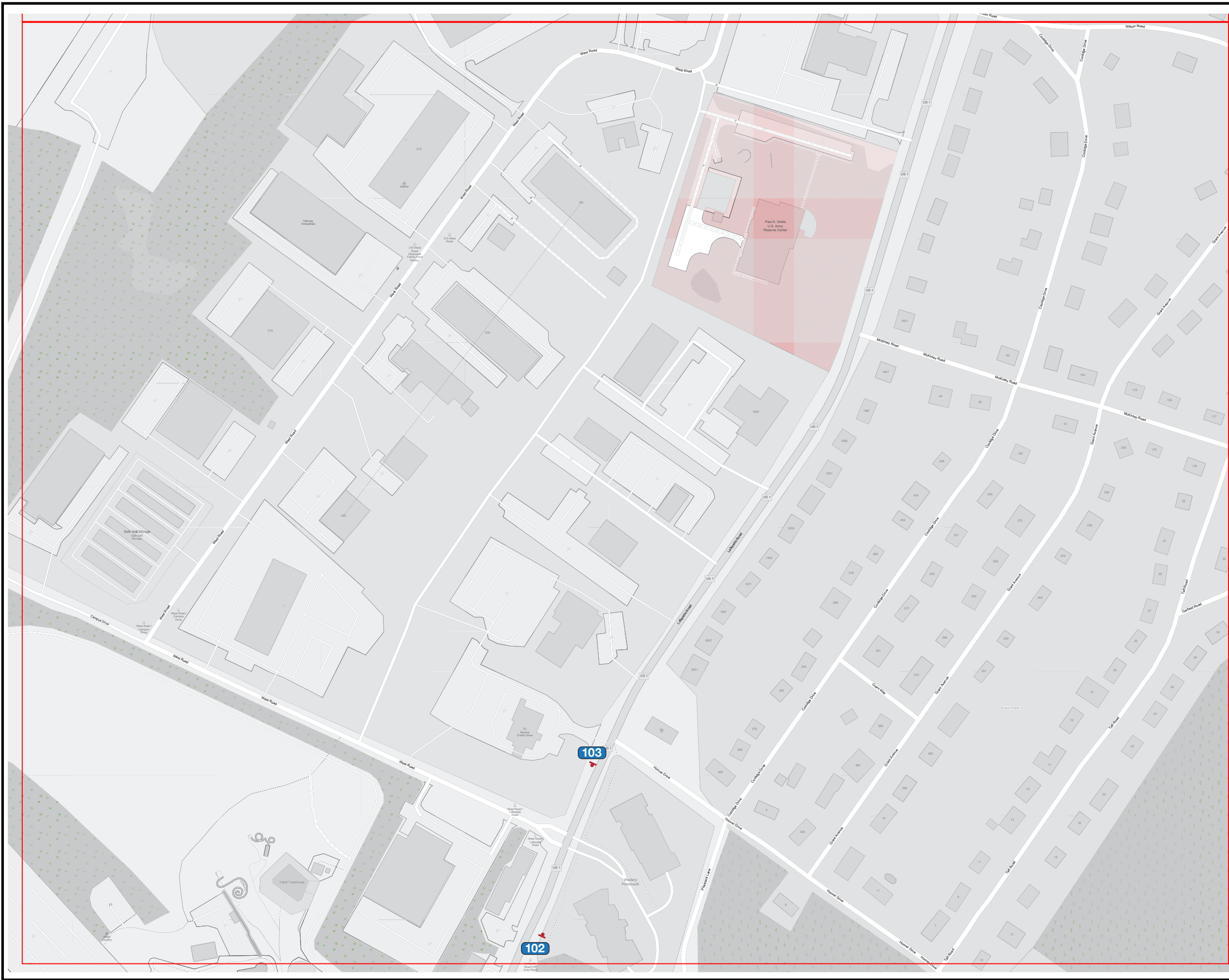
SHEET TITLE

**Sign Location Plans  
 Vehicular/Trails**

REVISIONS V2\_03/13/24

SHEET NO.

**SL.11**



**SPECIFICATIONS**

Refer to the Wayfinding and Signage System design intent documentation for sign type drawings, material call-outs and installation methods.

Refer to the Wayfinding and Signage System message schedule for all sign type messages, location numbers, quantities, and specific location details.

**SIGNAGE LEGEND**

- 100 Vehicular
- 700 Pedestrian Directional
- 800 Pedestrian Directional
- 900 Trail Signage

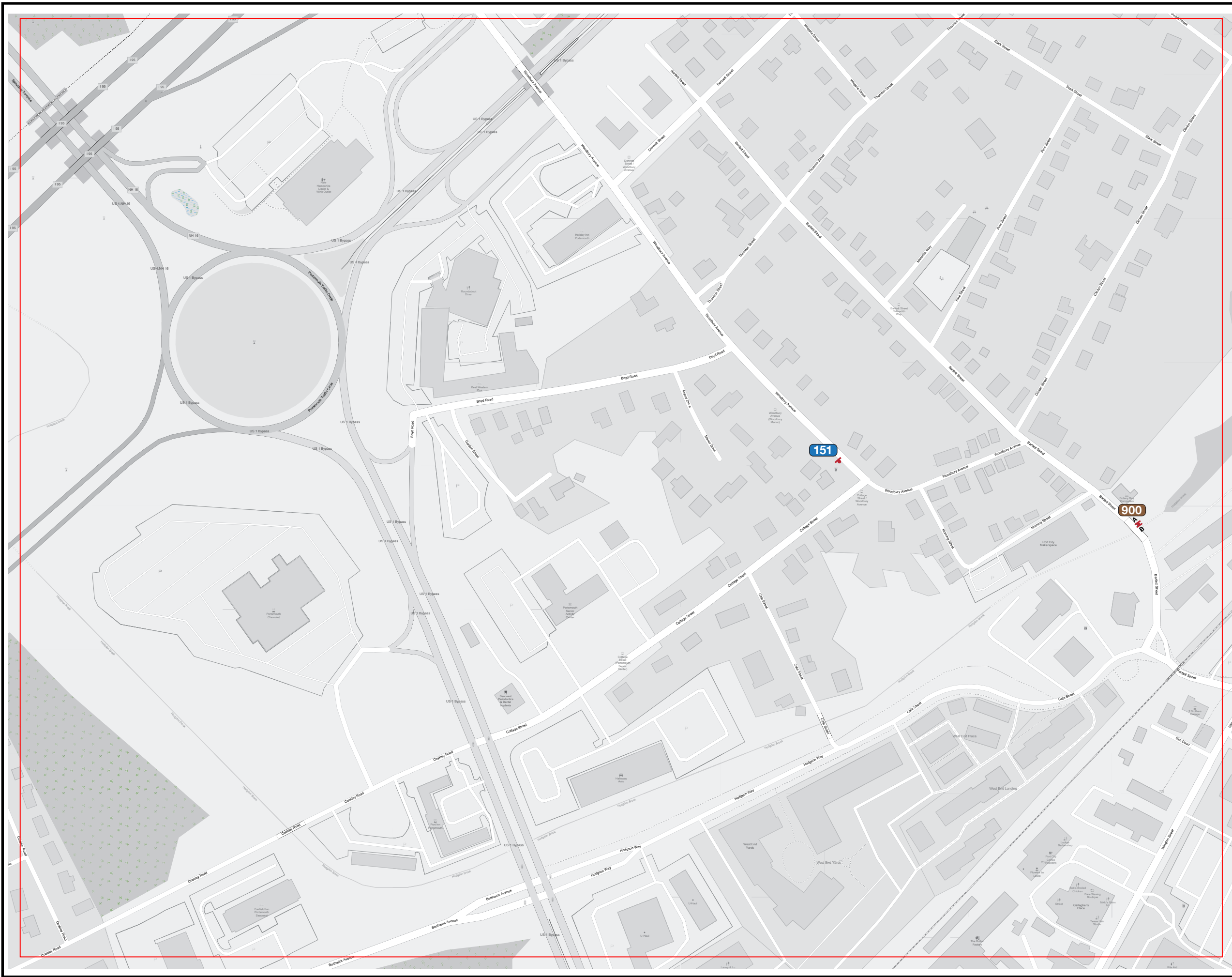
**NOTES:**

1. General sign locations are provided on these plan sheets.
2. The Message Schedule provides more detailed guidance of sign location in the Remarks column.
3. Refer to the Message Schedule for the final messages of each sign.
4. Utilize the above Legend to help determine sign types, and other details of location.

ENVIRONMENTS & EXPERIENCES

**merJe** 5 W. Gay Street  
 West Chester, PA 19380  
 T 484.266.0648  
[www.merjedesign.com](http://www.merjedesign.com)

<b>DATE</b>	02/13/24	<b>CLIENT / PROJECT</b>	PORTSMOUTH NH
<b>DRAWN BY:</b>	GS		Wayfinding and Signage System
<p style="font-size: small;">These drawings are meant for DESIGN INTENT ONLY and are not for construction. Contractor shall verify and be responsible for all dimensions and conditions of the job. Contractor shall be familiar with the site and conditions it presents. This office must be notified of any variations from the dimensions and conditions shown on this drawing. Shop drawings and details must be submitted to this office for approval prior to proceeding with fabrication. All copy shall be proofread by client and legal requirements checked by legal department.</p>			PHASE 4
		<b>PROJECT NO.</b>	
<b>REVISIONS</b>	V2_03/13/24	<b>SHEET TITLE</b>	<b>Sign Location Plans</b> Vehicular/Trails
		<b>SHEET NO.</b>	<b>SL.12</b>



**SPECIFICATIONS**

Refer to the Wayfinding and Signage System design intent documentation for sign type drawings, material call-outs and installation methods.

Refer to the Wayfinding and Signage System message schedule for all sign type messages, location numbers, quantities, and specific location details.

**SIGNAGE LEGEND**

- 100 Vehicular
- 700 Pedestrian Directional
- 800 Pedestrian Directional
- 900 Trail Signage

**NOTES:**

1. General sign locations are provided on these plan sheets.
2. The Message Schedule provides more detailed guidance of sign location in the Remarks column.
3. Refer to the Message Schedule for the final messages of each sign.
4. Utilize the above Legend to help determine sign types, and other details of location.

ENVIRONMENTS & EXPERIENCES



5 W. Gay Street  
West Chester, PA 19380  
T 484.266.0648  
[www.merjedesign.com](http://www.merjedesign.com)

DATE	02/13/24
DRAWN BY:	GS
These drawings are meant for DESIGN INTENT ONLY and are not for construction. Contractor shall verify and be responsible for all dimensions and conditions of the job. Contractor shall be familiar with the site and conditions it presents. This office must be notified of any variations from the dimensions and conditions shown on this drawing. Shop drawings and details must be submitted to this office for approval prior to proceeding with fabrication. All copy shall be proofread by client and legal requirements checked by legal department.	
REVISIONS	V2_03/13/24

CLIENT / PROJECT	<b>PORTSMOUTH NH</b> Wayfinding and Signage System PHASE 4
PROJECT NO.	
SHEET TITLE	<b>Sign Location Plans</b> <b>Vehicular/Trails</b>
SHEET NO.	<b>SL.13</b>

**SL-PHOTO** | Sign Location  
Photo Details



PHASE: 4.0  
 LOCATION NO. 102  
 SIGN TYPE: VDIR.3  
 PLAN SHEET: SL.12

COMMENTS:  
 Remove existing Brown/Blue Sign at the corner of ROUTE 1 and Campus Drive.  
 Will Require DOT Approval



PHASE: 4.0  
 LOCATION NO. 103  
 SIGN TYPE: VDIR.2  
 PLAN SHEET: SL.12

COMMENTS:  
 Remove existing Brown/Blue Sign at the corner of ROUTE 1 and Campus Drive.  
 Will Require DOT Approval



PHASE: 4.0  
 LOCATION NO. 104  
 SIGN TYPE: VDIR.2  
 PLAN SHEET: SL.11

COMMENTS:  
 Remove Existing Brown Sign. Keep ID Sign for Urban Forestry at the Corner.  
 Will Require DOT Approval.



PHASE: 4.0  
 LOCATION NO. 107  
 SIGN TYPE: VDIR.3  
 PLAN SHEET: SL.11

COMMENTS:



PHASE: 4.0  
 LOCATION NO. 108  
 SIGN TYPE: VDIR.2  
 PLAN SHEET: SL.11

COMMENTS:  
 Remove Existing Brown Sign. Keep ID Sign for Urban Forestry at the Corner.  
 Will Require DOT Approval.



PHASE: 4.0  
 LOCATION NO. 110  
 SIGN TYPE: VDIR.3  
 PLAN SHEET: SL.10

COMMENTS:  
 Remove existing Green Signs at the corner of Middle Raod and Peverly Hill.  
 Will Require DOT Approval.



PHASE: 4.0  
 LOCATION NO. 150  
 SIGN TYPE: VDIR.1  
 PLAN SHEET: SL.10

COMMENTS:



PHASE: 4.0  
 LOCATION NO. 151  
 SIGN TYPE: VDIR.1  
 PLAN SHEET: SL.13

COMMENTS:  
 Locate on property line between houses.  
 Remove existing Sign at Intersection.

REVISIONS		
DATE	BY	DESCRIPTION

ENVIRONMENTS & EXPERIENCES

**merJe**

5 West Gay Street  
 West Chester, PA 19380  
 T 484.266.0648  
[www.merjedesign.com](http://www.merjedesign.com)

SHEET TITLE

Photo Details

CLIENT / PROJECT

City of Portsmouth NH  
 Wayfinding & Signage Program  
 Phase 4

DATE: March 13, 2024  
 DRAWN BY: GS  
 SHEET NO.

**LP.1**





PHASE: 4.0  
 LOCATION NO. 700  
 SIGN TYPE: PED.1  
 PLAN SHEET: SL.5

COMMENTS:



PHASE: 4.0  
 LOCATION NO. 701  
 SIGN TYPE: PED.1  
 PLAN SHEET: SL.5

COMMENTS:



PHASE: 4.0  
 LOCATION NO. 703  
 SIGN TYPE: PED.1  
 PLAN SHEET: SL4

COMMENTS:



PHASE: 4.0  
 LOCATION NO. 704  
 SIGN TYPE: PED.1  
 PLAN SHEET: SL.3

COMMENTS:



PHASE: 4.0  
 LOCATION NO. 707  
 SIGN TYPE: PED.1  
 PLAN SHEET: SL.4

COMMENTS:



PHASE: 4.0  
 LOCATION NO. 716  
 SIGN TYPE: PED.1  
 PLAN SHEET: SL.3

COMMENTS:  
 Area to be under construction 2024  
 Coordinate location details with City of Portsmouth



PHASE: 4.0  
 LOCATION NO. 718  
 SIGN TYPE: PED.1  
 PLAN SHEET: SL.3

COMMENTS:



PHASE: 4.0  
 LOCATION NO. 721  
 SIGN TYPE: PED.1  
 PLAN SHEET: SL.3

COMMENTS:

REVISIONS		
DATE	BY	DESCRIPTION

ENVIRONMENTS & EXPERIENCES

**merJe**

5 West Gay Street  
 West Chester, PA 19380  
 T 484.266.0648  
[www.merjedesign.com](http://www.merjedesign.com)

SHEET TITLE

Photo Details

CLIENT / PROJECT

City of Portsmouth NH  
 Wayfinding & Signage Program  
 Phase 4

DATE: March 13, 2024  
 DRAWN BY: GS  
 SHEET NO.

**LP.2**



PHASE: 4.0  
 LOCATION NO. 723  
 SIGN TYPE: PED.1  
 PLAN SHEET: SL.2

COMMENTS:



PHASE: 4.0  
 LOCATION NO. 724  
 SIGN TYPE: PED.1  
 PLAN SHEET: SL.1

COMMENTS:



PHASE: 4.0  
 LOCATION NO. 725  
 SIGN TYPE: PED.1  
 PLAN SHEET: SL1

COMMENTS:  
 Area to be under construction 2024 by Private Developer  
 Coordinate location details with City of



PHASE: 4.0  
 LOCATION NO. 800  
 SIGN TYPE: PED.2.2  
 PLAN SHEET: SL.4

COMMENTS:



PHASE: 4.0  
 LOCATION NO. 803  
 SIGN TYPE: PED.2.2  
 PLAN SHEET: SL.4

COMMENTS:



PHASE: 4.0  
 LOCATION NO. 804  
 SIGN TYPE: PED.2.2  
 PLAN SHEET: SL.4

COMMENTS:



PHASE: 4.0  
 LOCATION NO. 805  
 SIGN TYPE: PED.2.2  
 PLAN SHEET: SL.4

COMMENTS:



PHASE: 4.0  
 LOCATION NO. 807  
 SIGN TYPE: PED.2.1  
 PLAN SHEET: SL.4

COMMENTS:

REVISIONS		
DATE	BY	DESCRIPTION

ENVIRONMENTS & EXPERIENCES

**merJe**

5 West Gay Street  
 West Chester, PA 19380  
 T 484.266.0648  
[www.merjedesign.com](http://www.merjedesign.com)

SHEET TITLE

Photo Details

CLIENT / PROJECT

City of Portsmouth NH  
 Wayfinding & Signage Program  
 Phase 4

DATE: March 13, 2024  
 DRAWN BY: GS  
 SHEET NO.

**LP.3**



PHASE: 4.0  
 LOCATION NO. 810  
 SIGN TYPE: PED.2.2  
 PLAN SHEET: SL.2

COMMENTS:



PHASE: 4.0  
 LOCATION NO. 812  
 SIGN TYPE: PED.2.1  
 PLAN SHEET: SL.4

COMMENTS:



PHASE: 4.0  
 LOCATION NO. 827  
 SIGN TYPE: PED.2.2  
 PLAN SHEET: SL3

COMMENTS:



PHASE: 4.0  
 LOCATION NO. 829  
 SIGN TYPE: PED.2.1  
 PLAN SHEET: SL.3

COMMENTS:



PHASE: 4.0  
 LOCATION NO. 830  
 SIGN TYPE: PED.2.1  
 PLAN SHEET: SL.3

COMMENTS:



PHASE: 4.0  
 LOCATION NO. 833  
 SIGN TYPE: PED.2.1  
 PLAN SHEET: SL.3

COMMENTS:



PHASE: 4.0  
 LOCATION NO. 835  
 SIGN TYPE: PED.2.1  
 PLAN SHEET: SL.1

COMMENTS:



PHASE: 4.0  
 LOCATION NO. 836  
 SIGN TYPE: PED.2.1  
 PLAN SHEET: SL.1

COMMENTS:

REVISIONS		
DATE	BY	DESCRIPTION

ENVIRONMENTS & EXPERIENCES

**merJe**

5 West Gay Street  
 West Chester, PA 19380  
 T 484.266.0648  
[www.merjedesign.com](http://www.merjedesign.com)

SHEET TITLE

Photo Details

CLIENT / PROJECT

City of Portsmouth NH  
 Wayfinding & Signage Program  
 Phase 4

DATE: March 13, 2024  
 DRAWN BY: GS  
 SHEET NO.

**LP.4**



PHASE: 4.0  
 LOCATION NO. 837  
 SIGN TYPE: PED.2.1  
 PLAN SHEET: SL.2

COMMENTS:



PHASE: 4.0  
 LOCATION NO. 839  
 SIGN TYPE: PED.2.2  
 PLAN SHEET: SL.2

COMMENTS:



PHASE: 4.0  
 LOCATION NO. 842  
 SIGN TYPE: PED.2.1  
 PLAN SHEET: SL.2

COMMENTS:



PHASE: 4.0  
 LOCATION NO. 847  
 SIGN TYPE: PED.2.1  
 PLAN SHEET: SL.1

COMMENTS:



PHASE: 4.0  
 LOCATION NO. 848  
 SIGN TYPE: PED.2.1  
 PLAN SHEET: SL.1

COMMENTS:



PHASE: 4.0  
 LOCATION NO. 849  
 SIGN TYPE: PED.2.1  
 PLAN SHEET: SL.1

COMMENTS:



PHASE: 4.0  
 LOCATION NO. 850  
 SIGN TYPE: PED.2.2  
 PLAN SHEET: SL.4

COMMENTS: REMOVE EXISTING TRAIL SIGN



PHASE: 4.0  
 LOCATION NO. 852  
 SIGN TYPE: PED.2.1  
 PLAN SHEET: SL.1

COMMENTS:

REVISIONS		
DATE	BY	DESCRIPTION

ENVIRONMENTS & EXPERIENCES

**merJe**

5 West Gay Street  
 West Chester, PA 19380  
 T 484.266.0648  
[www.merjedesign.com](http://www.merjedesign.com)

SHEET TITLE

Photo Details

CLIENT / PROJECT

City of Portsmouth NH  
 Wayfinding & Signage Program  
 Phase 4

DATE: March 13, 2024  
 DRAWN BY: GS  
 SHEET NO.

**LP.5**



PHASE: 4.0  
 LOCATION NO. 853  
 SIGN TYPE: PED.2.1  
 PLAN SHEET: SL.1

COMMENTS:



PHASE: 4.0  
 LOCATION NO. 854  
 SIGN TYPE: PED.2.1  
 PLAN SHEET: SL.1

COMMENTS:



PHASE: 4.0  
 LOCATION NO. 855  
 SIGN TYPE: PED.2.1  
 PLAN SHEET: SL.1

COMMENTS:



PHASE: 4.0  
 LOCATION NO. 856  
 SIGN TYPE: PED.2.1  
 PLAN SHEET: SL.3

COMMENTS:



PHASE: 4.0  
 LOCATION NO. 857  
 SIGN TYPE: PED.2.2  
 PLAN SHEET: SL.2

COMMENTS:



PHASE: 4.0  
 LOCATION NO. 858  
 SIGN TYPE: PED.2.1  
 PLAN SHEET: SL.4

COMMENTS:



PHASE: 4.0  
 LOCATION NO. 860  
 SIGN TYPE: PED.2.1  
 PLAN SHEET: SL.3

COMMENTS:  
 Area to be under construction 2024/25  
 Coordinate location details with City of Portsmouth



PHASE: 4.0  
 LOCATION NO. 900  
 SIGN TYPE: TRAIL.1  
 PLAN SHEET: SL.13

COMMENTS:  
 Area to be under construction 2024/25  
 Coordinate location details with City of Portsmouth

REVISIONS		
DATE	BY	DESCRIPTION

ENVIRONMENTS & EXPERIENCES

**merje**

5 West Gay Street  
 West Chester, PA 19380  
 T 484.266.0648  
[www.merjedesign.com](http://www.merjedesign.com)

SHEET TITLE

Photo Details

CLIENT / PROJECT

City of Portsmouth NH  
 Wayfinding & Signage Program  
 Phase 4

DATE: March 13, 2024  
 DRAWN BY: GS  
 SHEET NO.

**LP.6**