

RFP#16-18
FOUNDRY PLACE PARKING
GARAGE PERCENT FOR ART PROJECT
PORTSMOUTH, NH
November 28, 2017

Addendum#1

This Addendum forms part of the original document marked: RFP#16-18 Foundry Place Parking Garage Percent for Art Project.

- 1) The following questions regarding specific space available for art work at the Foundry Place Garage have been asked, and in response the City has provided annotated floor plan(s) that provide answers to these questions.

Q: Could you perhaps highlight on the floor plan(s) where the long blank interior wall that could be used for art is located?

A: See attached annotated plan(s).

Q: If there are additional walls that would contain a decent amount of blank space, could those be highlighted (drawings A101 through A106)?

A: See attached annotated plan(s).

Q: What is the finish of the wall, and what are the dimensions - both width and height?

A: See attached annotated plan(s).

Q: On any of these walls, including the ones highlighted on the attached plans, could you call out where any interior signage such as floor numbers, exit signs, etc. would be?

A: See attached annotated plan(s).

Q: Is there a cutoff date for questions to be submitted?

A: No

Artists are not limited to the locations specified in this addendum (attached annotated plans) for their art. These locations are provided in response to the questions asked as part of this addendum.

Respondents are to acknowledge this addendum within their proposal. Failure to do so may subject a respondent to disqualification.

End of Addendum #1

Continue below for the plans.

SHEET NOTES

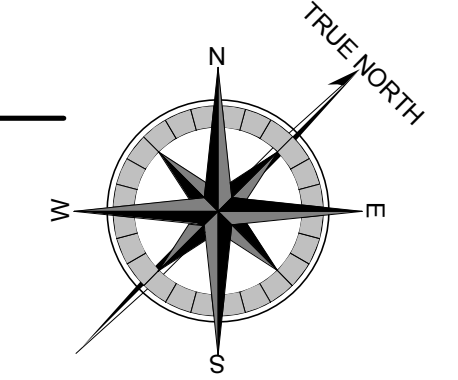
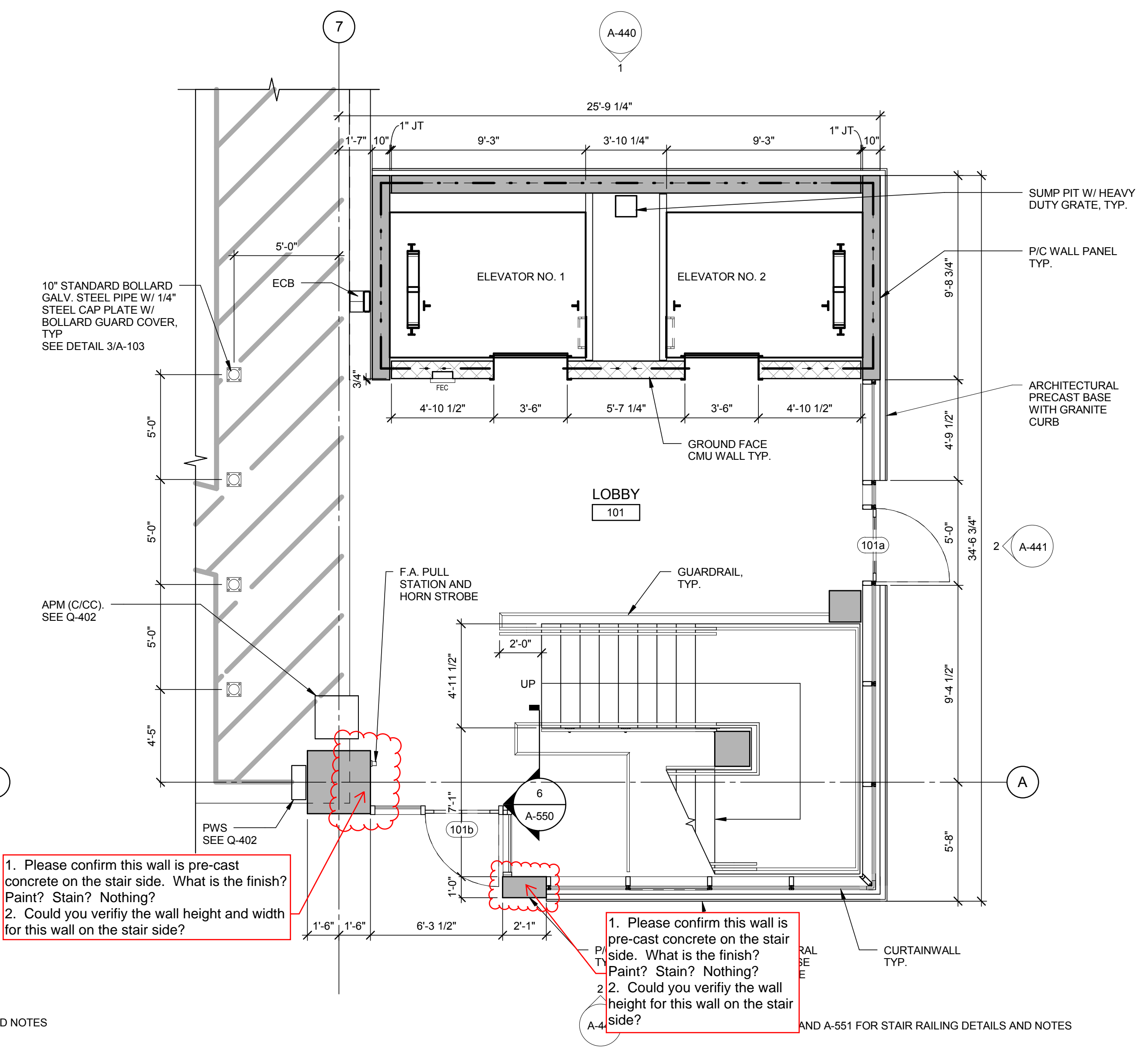
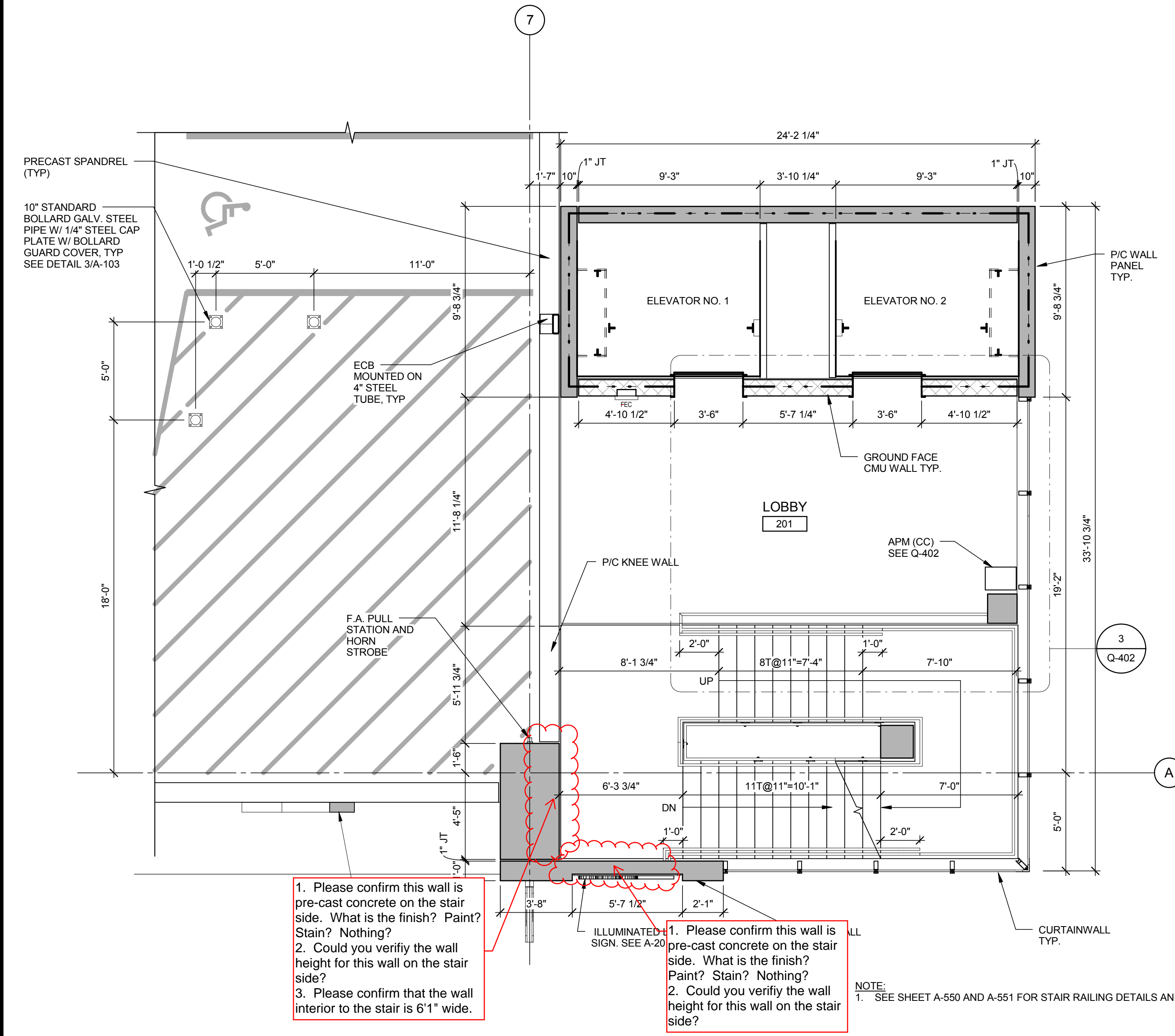
1. CAULK ALL PANEL JOINTS AT STAIR TOWER (INTERIOR & EXTERIOR).
2. COORDINATE SIZE AND LOCATIONS OF ELEVATOR DOOR OPENINGS WITH ELEVATOR SUPPLIER.
3. DIMENSIONS BETWEEN HANDRAILS SHALL BE 4'-0" MINIMUM.
4. SEE STRUCTURAL DRAWINGS FOR PRECAST SIZES AND DIMENSIONS.
5. COORDINATE SPACING OF VERTICAL GUARDRAIL BALUSTERS W/ LOCATION OF SUPPORT POST.
6. PROVIDE PAINTED FINISH AT MAIN STAIR / ELEVATOR TOWER, COLOR TO BE SELECTED BY ARCHITECT.

WALKER
PARKING CONSULTANTS

20 Park Plaza, Suite 1202
Portsmouth, NH 03801
603.430.5040 P
603.430.5045 F
www.walkerparking.com

Walker Parking Consultants / Engineers, Inc.

C:\Revit\Projects\16-2683.01-Deer_Street_Portsmouth_NH\Arch_Struct\R-16_laral.rvt 7/28/2017 3:33:58 PM



FOUNDRY PLACE
PARKING GARAGE

PORTSMOUTH, NEW HAMPSHIRE

MARK	DATE	DESCRIPTION	ISSUE
07/28/2017		CONSTRUCTION DOCUMENTS	
08/03/2017		DESIGN DEVELOPMENT	

PROJECT NO: 16-2683.01
DRAWN BY: LEL
CHECKED BY: SMM

COPYRIGHT © 2017. ALL RIGHTS RESERVED. NO PART OF THIS DOCUMENT MAY BE REPRODUCED IN ANY FORM OR BY ANY MEANS WITHOUT PERMISSION FROM WALKER PARKING CONSULTANTS / ENGINEERS, INC.

SHEET TITLE:
STAIR / ELEVATOR A - ENLARGED PLANS

A-410

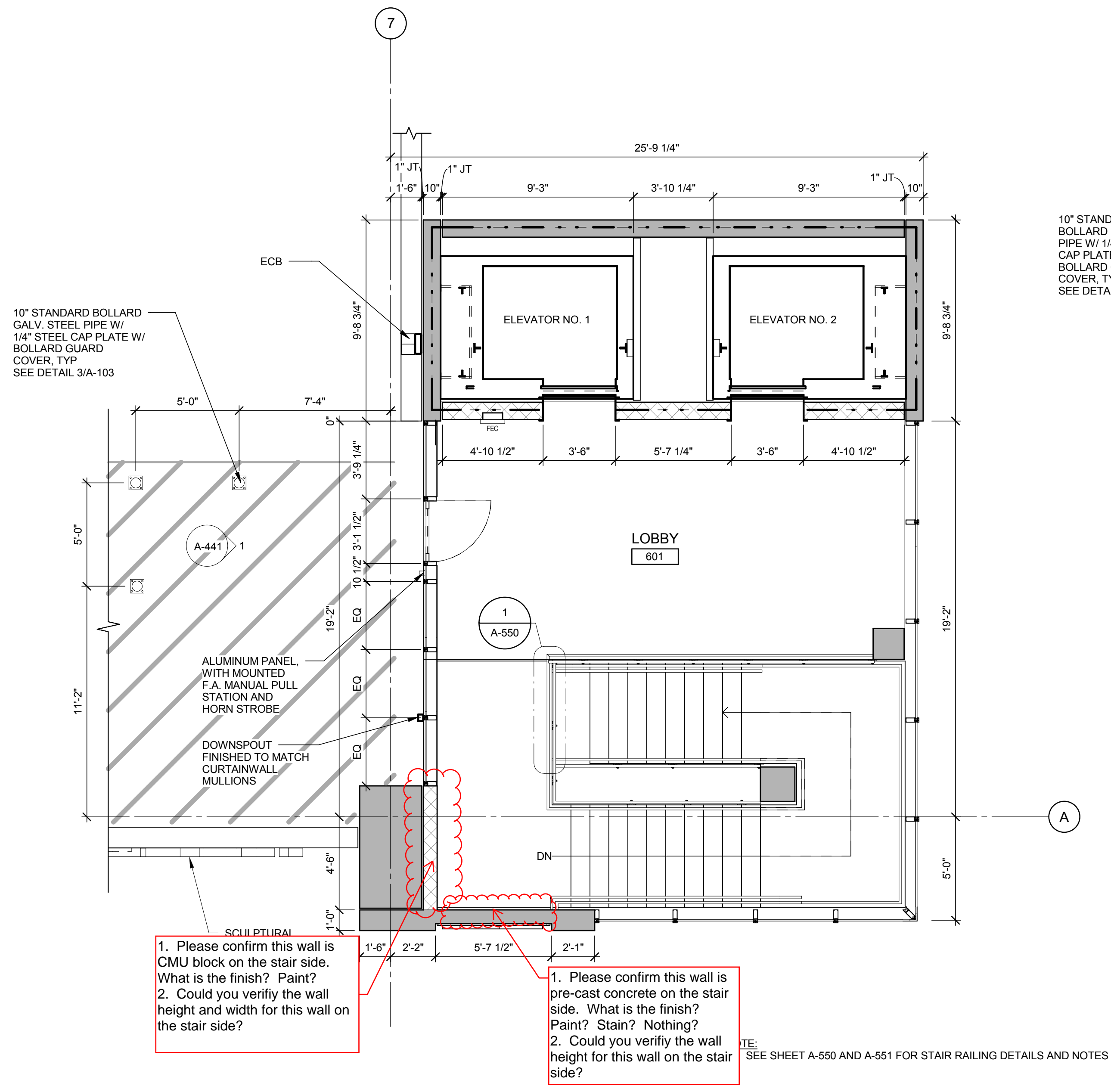
SHEET NOTES

1. CAULK ALL PANEL JOINTS AT STAIR TOWER (INTERIOR & EXTERIOR).
2. COORDINATE SIZE AND LOCATIONS OF ELEVATOR DOOR OPENINGS WITH ELEVATOR SUPPLIER.
3. DIMENSIONS BETWEEN HANDRAILS SHALL BE 4'-0" MINIMUM.
4. SEE STRUCTURAL DRAWINGS FOR PRECAST SIZES AND DIMENSIONS.
5. COORDINATE SPACING OF VERTICAL GUARDRAIL BALUSTERS W/ LOCATION OF SUPPORT POST.
6. PROVIDE PAINTED FINISH AT MAIN STAIR / ELEVATOR TOWER, COLOR TO BE SELECTED BY ARCHITECT.

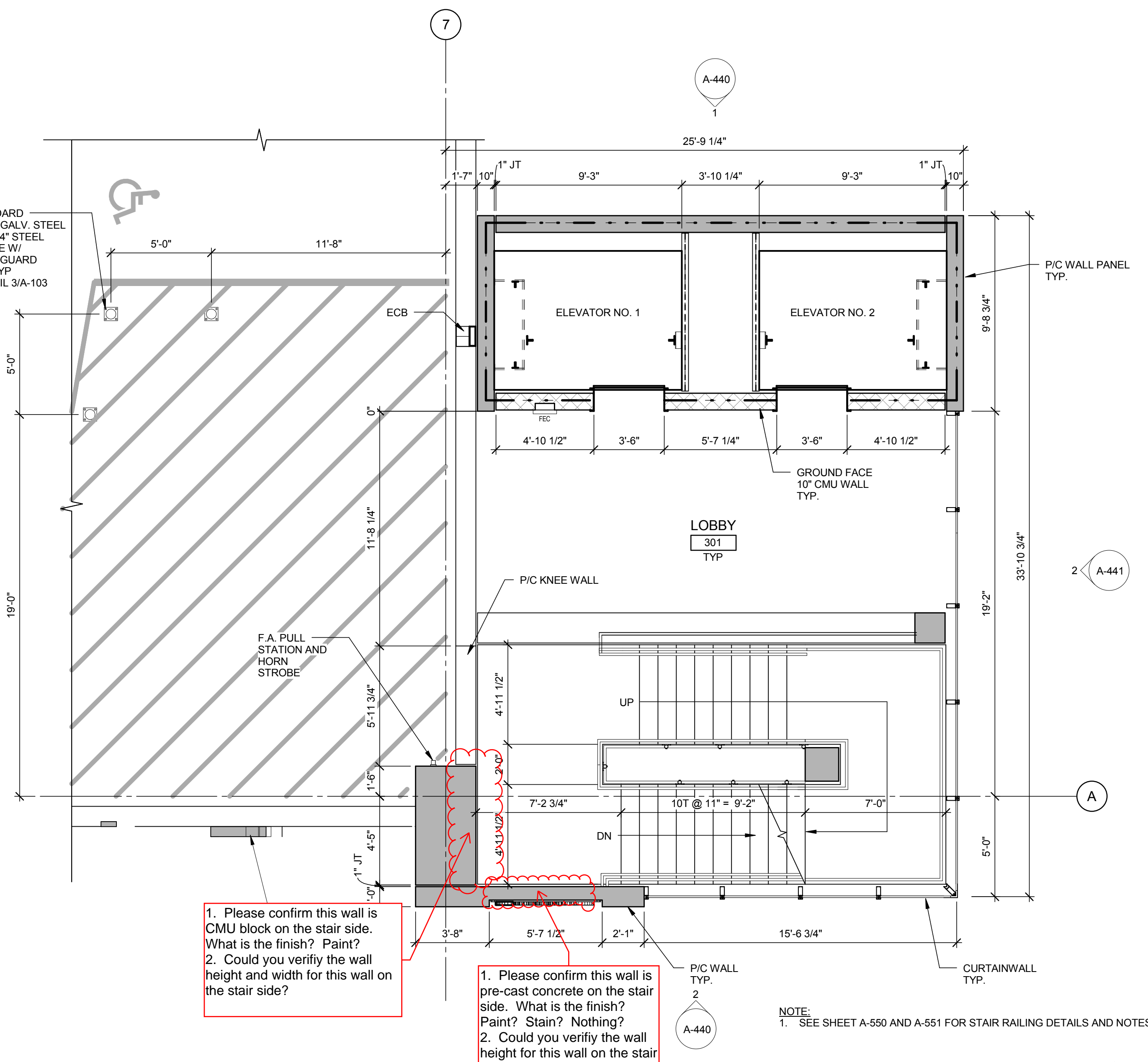
WALKER
PARKING CONSULTANTS

20 Park Plaza, Suite 1202
Portsmouth, NH 03801
603.350.5040 P
603.350.5040 F
www.walkerparking.com

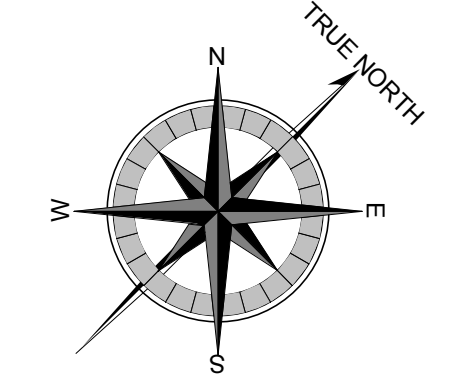
Walker Parking Consultants / Engineers, Inc.



2 TOP TIER PLAN
1/4" = 1'-0"



1 TYPICAL TIER PLAN
1/4" = 1'-0"



1. Please confirm this wall is CMU block on the stair side. What is the finish? Paint?
2. Could you verify the wall height and width for this wall on the stair side?

1. Please confirm this wall is pre-cast concrete on the stair side. What is the finish? Paint? Stain? Nothing?
2. Could you verify the wall height for this wall on the stair side?

1. Please confirm this wall is CMU block on the stair side. What is the finish? Paint?
2. Could you verify the wall height and width for this wall on the stair side?

1. Please confirm this wall is pre-cast concrete on the stair side. What is the finish? Paint? Stain? Nothing?
2. Could you verify the wall height for this wall on the stair side?

NOTE:
1. SEE SHEET A-550 AND A-551 FOR STAIR RAILING DETAILS AND NOTES

7/28/2017 3:34:01 PM
C:\Revit\Projects\16-2683-01-Deer_Street_Portsmouth_NH\Acad_Struct-R-16_laral.rvt

FOUNDRY PLACE
PARKING GARAGE

PORTSMOUTH, NEW HAMPSHIRE

MARK	DATE	DESCRIPTION	ISSUE
07/28/2017		CONSTRUCTION DOCUMENTS	
08/02/2017		DESIGN DEVELOPMENT	

PROJECT NO: 16-2683-01
DRAWN BY: LEL
CHECKED BY: SMM

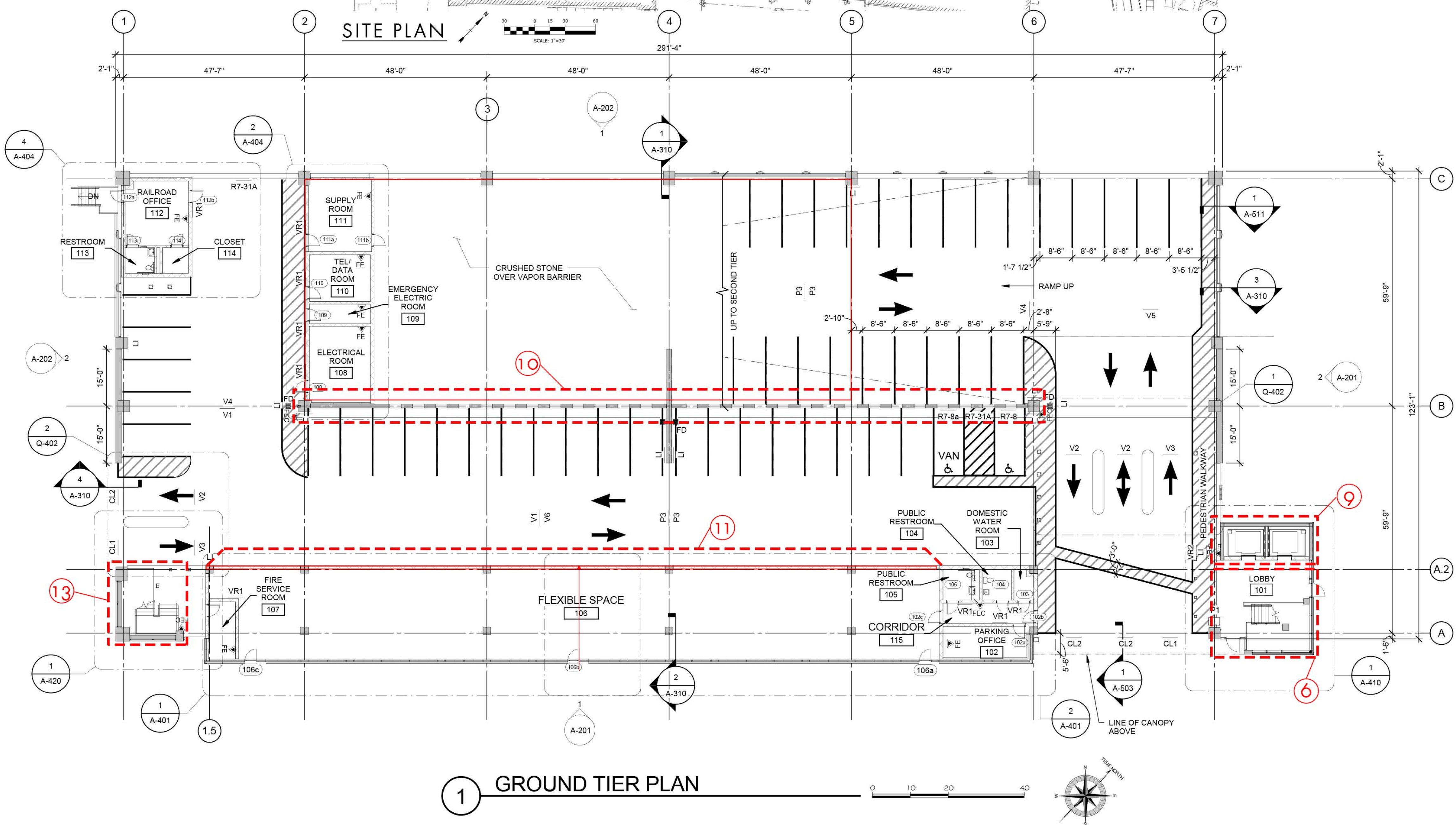
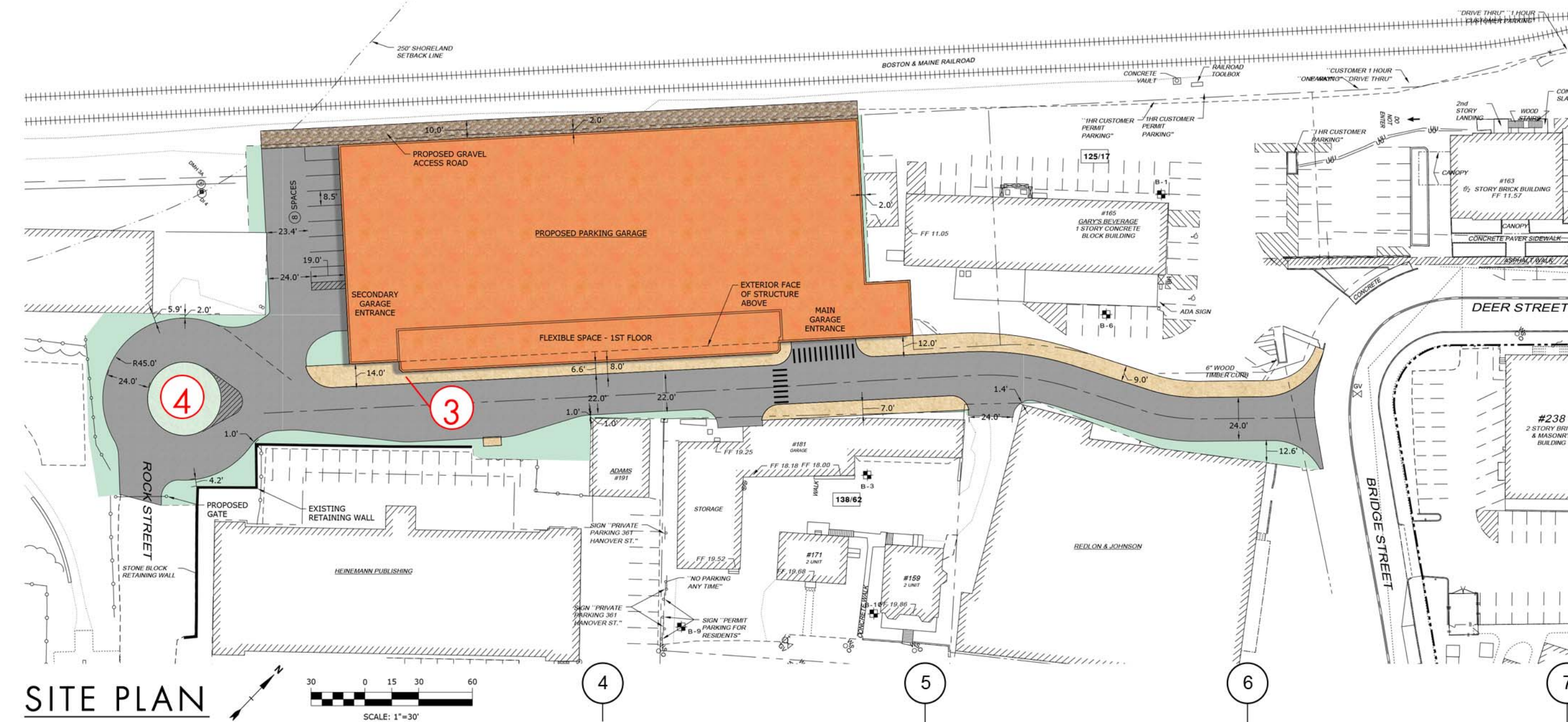
COPYRIGHT © 2017. ALL RIGHTS RESERVED. NO PART OF THIS DOCUMENT MAY BE REPRODUCED IN ANY FORM OR BY ANY MEANS WITHOUT PERMISSION FROM WALKER PARKING CONSULTANTS / ENGINEERS, INC.

SHEET TITLE:
STAIR / ELEVATOR A - ENLARGED PLANS

A-411

GENERAL SHEET NOTES

1. FOR TYPICAL STRIPING DETAILS AND FLOOR ARROWS SEE SHEET A-102 AND A-103.
2. ALL DIMENSIONS FOR STRIPING ARE FROM FACE OF COLUMN OR INSIDE FACE OF WALL UNO.
3. 4" WIDE YELLOW PAVEMENT MARKING STRIPE.
4. 4" WIDE YELLOW DIAGONAL PAVEMENT MARKING STRIPE.
5. FOR ENLARGED STAIR / ELEVATOR PLANS & ELEVATIONS SEE "S-400 & A-400" SERIES DRAWINGS.
6. FOR BUILDING ELEVATIONS SEE "A-200" SERIES DRAWINGS.
7. HATCHING AT ISOMETRIC DOES NOT INDICATE AREA REQUIRING TRAFFIC TOPPING.
8. SEE CIVIL DRAWINGS FOR SITE INFORMATION & BUILDING LOCATION.
9. FOR FLOOR ELEVATIONS SEE "S-100" SERIES DRAWINGS.
10. SEE MEP DRAWINGS FOR DRAINAGE LAYOUT, FIRE STANDPIPE SYSTEM & MECHANICAL SYSTEMS.
11. SEE GRAPHICS SHEETS FOR SIGN DETAILS AND SIGN MOUNTING DETAILS.
12. FOR WASH LOCATIONS SEE "S-100" SERIES DRAWINGS.



CONSIDERATIONS		ELECTRICITY EASILY AVAILABLE	STRUCTURAL CONSIDERATION	WIND LOAD CONSIDERATION	MOUNTING RESTRICTIONS	COMMENTS
LOCATIONS						
1. TOP OF FLEX SPACE ROOF						
2. SHEAR WALLS						
3. GROUND SURFACE						
4. ROUNDABOUT CENTER						OVERALL DIAMETER OF PROPOSED INSTALLATION MUST NOT INTERFERE W/ FIRETRUCK TURNING RADIUS.
5. ENTIRE ELEVATION						SHOULD NOT PROJECT MORE THAN 4" FROM BUILDING FACE.
6. STAIR TOWER (INTERIOR)						
7. TOWER TOPS						
8. FIN SURFACE						
9. ELEVATOR SURFACE (INT.)						MINIMAL IMPACT ALLOWED PER FIRE DEPT. & STATE ELEVATOR INSPECTOR GUIDELINES. GRAPHIC ONLY.
10. LIGHT WALL (INT.)						
11. BACKSIDE OF FLEX SPACE (INT.)						
12. UPPER WALL SURFACE OF TOWERS (INT.)						
13. STAIR B LANDING WALLS (INT.)						
14. PORTSMOUTH LETTER LOCATIONS						REQUIRES HIGH LEVEL OF COORDINATIONS FOR MOUNTING LARGE INSTALLATION.



LIGHT WALL IMAGES

POTENTIAL ART LOCATIONS
FOUNDRY PLACE PARKING GARAGE
 PORTSMOUTH NH

21 NOVEMBER 2017

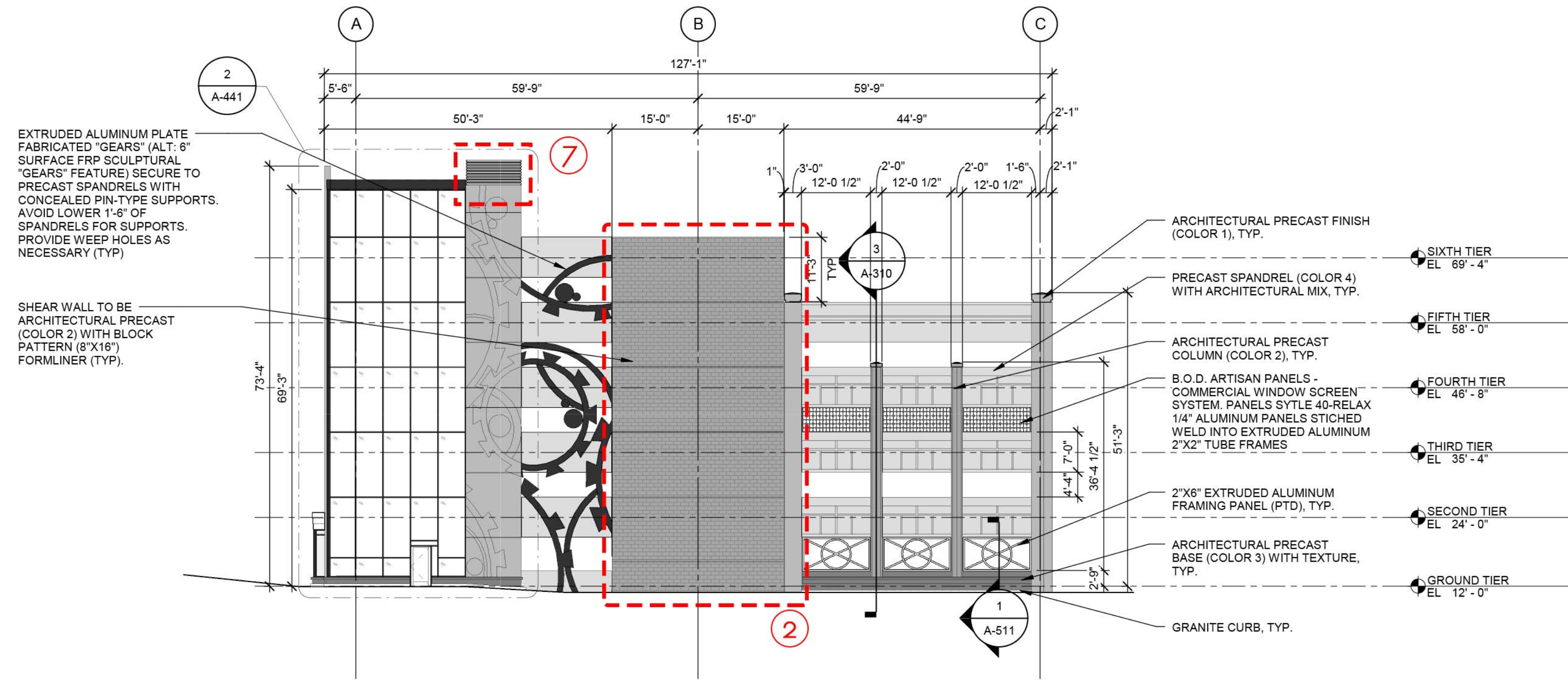


GENERAL SHEET NOTES

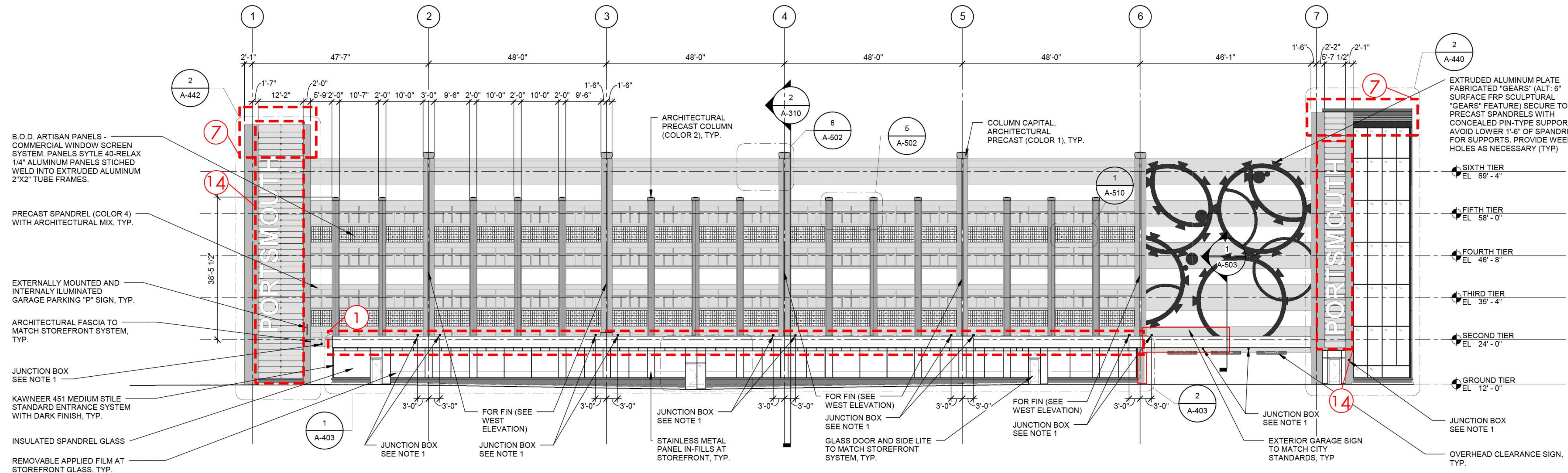
- ALL EXTERIOR COLUMNS, WALL PANELS, AND SPANDRELS (INCLUDING GRADE SPANDRELS) ARE TO HAVE AN ARCHITECTURAL CONCRETE MIX DESIGN. THE "ARCHITECTURAL PRECAST" MIX IS TO MATCH ARCHITECTS SAMPLE.
- SEE SHEET A-501 AND 502 FOR FINISH OF EXTERIOR PRECAST ELEMENTS.
- CURTAINWALL MULLIONS ALIGNED TO PRECAST REVEALS SHALL BE FIELD MEASURED FOR COORDINATION.
- SEE CIVIL DRAWING FOR SITE GRADES AT PERIMETER OF STRUCTURE.
- RECESSED JUNCTION BOXES IN FACE OF EXTERIOR PANELS TO BE CAST-IN AT PREFABRICATION PLANT. SEE ELEC. DRAWINGS.
- RECESSED JUNCTION BOX FOR DECORATIVE LIGHTING 3' FROM GRID LINE.
- CURTAIN WALL AND STOREFRONT GLAZING AT STAIR TOWERS TO BE 1/4" CLEAR TEMPERED GLASS.
- STOREFRONT GLAZING AT FLEX SPACE TO BE 1" TEMPERED INSULATED GLASS.

LEGEND

- ARCH PIC COLOR 1
- ARCH PIC COLOR 2
- ARCH PIC COLOR 3
- ARCH PIC COLOR 4



2 ELEVATION - EAST



1 SOUTH ELEVATION

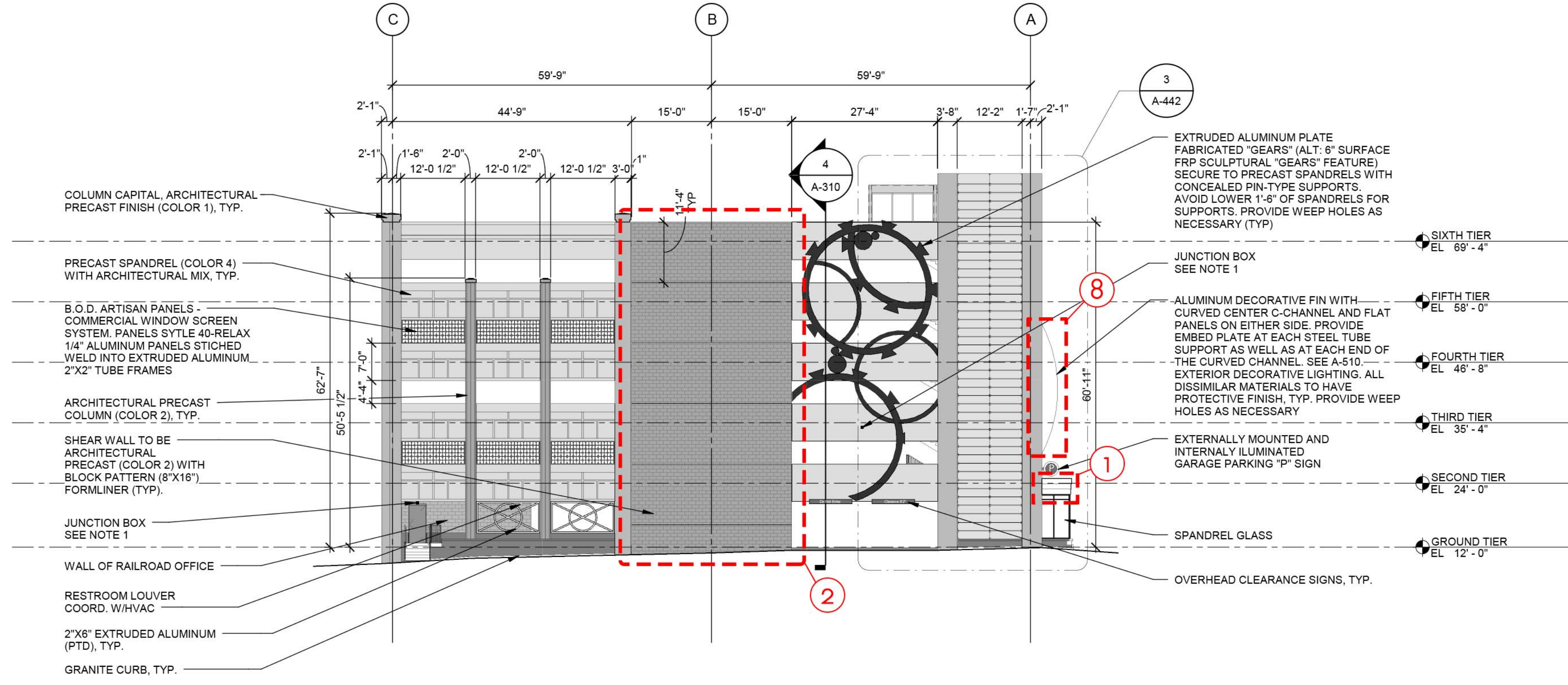
CONSIDERATIONS				
LOCATIONS	ELECTRICITY EASILY AVAILABLE	STRUCTURAL CONSIDERATION	WIND LOAD CONSIDERATION	COMMENTS
1. TOP OF FLEX SPACE ROOF				
2. SHEAR WALLS				
3. GROUND SURFACE				
4. ROUNDABOUT CENTER				OVERALL DIAMETER OF PROPOSED INSTALLATION MUST NOT INTERFERE W/ FIRETRUCK TURNING RADIUS.
5. ENTIRE ELEVATION				SHOULD NOT PROJECT MORE THAN 4" FROM BUILDING FACE.
6. STAIR TOWER (INTERIOR)				
7. TOWER TOPS				
8. FIN SURFACE				
9. ELEVATOR SURFACE (INT.)				MINIMAL IMPACT ALLOWED PER FIRE DEPT. & STATE ELEVATOR INSPECTOR GUIDELINES. GRAPHIC ONLY.
10. LIGHT WALL (INT.)				
11. BACKSIDE OF FLEX SPACE (INT.)				
12. UPPER WALL SURFACE OF TOWERS (INT.)				
13. STAIR B LANDING WALLS (INT.)				
14. PORTSMOUTH LETTER LOCATIONS				REQUIRES HIGH LEVEL OF COORDINATIONS FOR MOUNTING LARGE INSTALLATION.

GENERAL SHEET NOTES

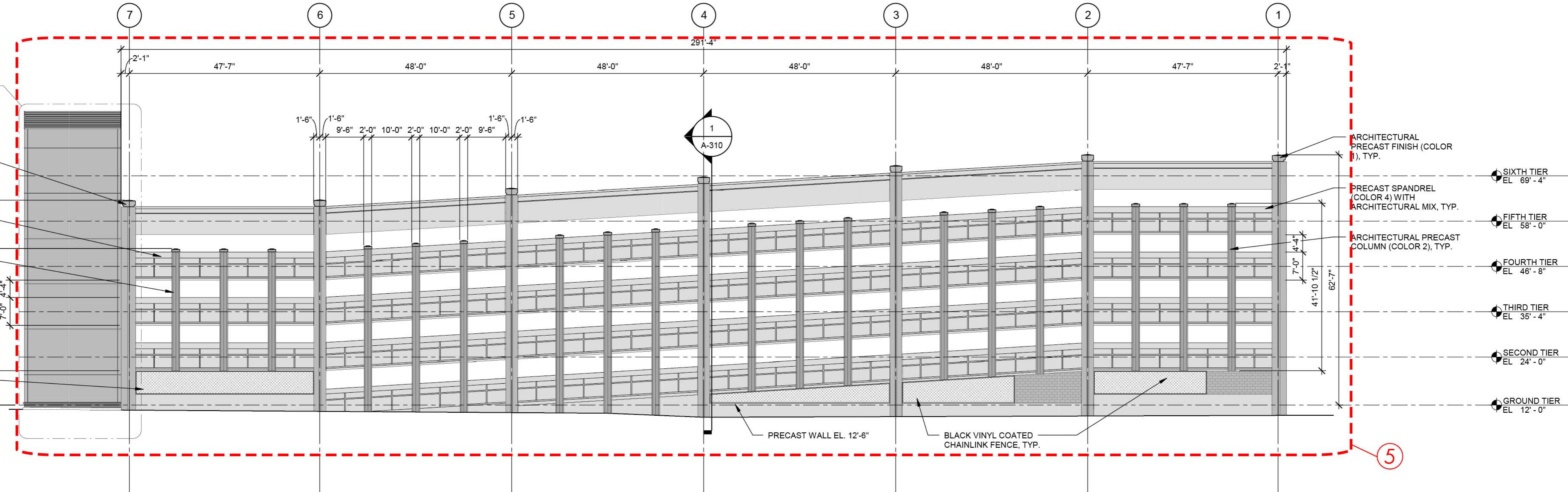
- ALL EXTERIOR COLUMNS, WALL PANELS, AND SPANDRELS (INCLUDING GRADE SPANDRELS) ARE TO HAVE AN ARCHITECTURAL CONCRETE MIX DESIGN. THE "ARCHITECTURAL PRECAST" MIX IS TO MATCH ARCHITECTS SAMPLE.
- SEE SHEET A-501 AND 502 FOR FINISH OF EXTERIOR PRECAST ELEMENTS.
- CURTAINWALL MULLIONS ALIGNED TO PRECAST REVEALS SHALL BE FIELD MEASURED FOR COORDINATION.
- SEE CIVIL DRAWING FOR SITE GRADES AT PERIMETER OF STRUCTURE.
- RECESSED JUNCTION BOXES IN FACE OF EXTERIOR PANELS TO BE CAST-IN AT PREFABRICATION PLANT. SEE ELEC. DRAWINGS.
- RECESSED JUNCTION BOX FOR DECORATIVE LIGHTING 3' FROM GRID LINE.
- CURTAIN WALL AND STOREFRONT GLAZING AT STAIR TOWERS TO BE 1/4" CLEAR TEMPERED GLASS.
- STOREFRONT GLAZING AT FLEX SPACE TO BE 1" TEMPERED INSULATED GLASS.

LEGEND

- ARCH PIC COLOR 1
- ARCH PIC COLOR 2
- ARCH PIC COLOR 3
- ARCH PIC COLOR 4



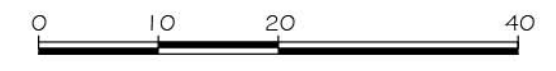
2 ELEVATION - WEST



1 NORTH ELEVATION

CONSIDERATIONS					
LOCATIONS	ELECTRICITY EASILY AVAILABLE	STRUCTURAL CONSIDERATION	WIND LOAD CONSIDERATION	MOUNTING RESTRICTIONS	COMMENTS
1. TOP OF FLEX SPACE ROOF					
2. SHEAR WALLS					
3. GROUND SURFACE					
4. ROUNDABOUT CENTER					OVERALL DIAMETER OF PROPOSED INSTALLATION MUST NOT INTERFERE W/ FIRETRUCK TURNING RADIUS.
5. ENTIRE ELEVATION					SHOULD NOT PROJECT MORE THAN 4" FROM BUILDING FACE.
6. STAIR TOWER (INTERIOR)					
7. TOWER TOPS					
8. FIN SURFACE					
9. ELEVATOR SURFACE (INT.)					MINIMAL IMPACT ALLOWED PER FIRE DEPT. & STATE ELEVATOR INSPECTOR GUIDELINES. GRAPHIC ONLY.
10. LIGHT WALL (INT.)					
11. BACKSIDE OF FLEX SPACE (INT.)					
12. UPPER WALL SURFACE OF TOWERS (INT.)					
13. STAIR B LANDING WALLS (INT.)					
14. PORTSMOUTH LETTER LOCATIONS					REQUIRES HIGH LEVEL OF COORDINATIONS FOR MOUNTING LARGE INSTALLATION.

POTENTIAL ART LOCATIONS
FOUNDRY PLACE PARKING GARAGE
 PORTSMOUTH NH



21 NOVEMBER 2017

