

No.	Date	Description
4.	02/27/2011	ADDENDUM #4

**EXISTING EXTERIOR REPAIR AND REPOINTING:**

- PATCH/REPAIR ALL ABANDONED EXTERIOR ANCHORS AND PENETRATIONS TO MATCH ADJACENT MATERIAL.
- INSPECT ALL SOLDERED METAL ROOFING TO REMAIN AND REPAIR ALL DAMAGED OR OPEN JOINTS.

- CONSULTANTS:**
- SITE / CIVIL CONSULTANT**  
Vanasse Hangen Brustlin, Inc.  
6 Bedford Farms Drive, Suite 607  
Boston, MA 02110  
617-552-7200  
617-552-7201
  - STRUCTURAL ENGINEER**  
JSN Associates, Inc.  
One Autumn Street  
Boston, MA 02114  
617-552-7200
  - MECH/ELEC/PLUMBING/FP ENGINEER**  
Consulting Engineering Services  
811 Middle Street  
Boston, MA 02126  
860-286-9171
  - SECURITY & TECHNOLOGY**  
R. G. Vanderveil Engineers, LLP  
274 Summer Street  
Boston, MA 02210  
781-547-4246
  - FOOD SERVICE**  
CASA Associates  
153 Andover Street, Suite 209  
Danvers, MA 01923  
978-762-6464

**165 Parrott Avenue  
Portsmouth, NH 03801**

**ISSUED FOR PERMIT  
05-27-2011**

**JCJ ARCHITECTURE**  
JCJ Architecture, PC  
38 Prospect Street  
Hartford, CT 06103

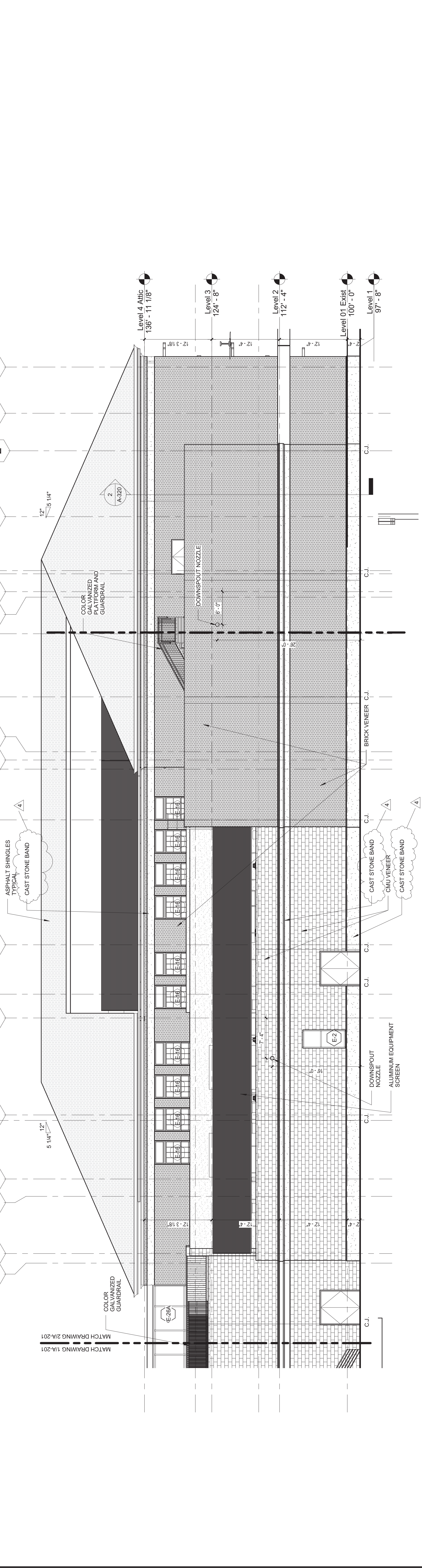
**ASSOCIATE ARCHITECT**  
D'Silva Architects  
23 High Street  
Portsmouth, NH 03801  
603-433-8701

**PLC.**  
**P.M.**  
**D.T.L.**

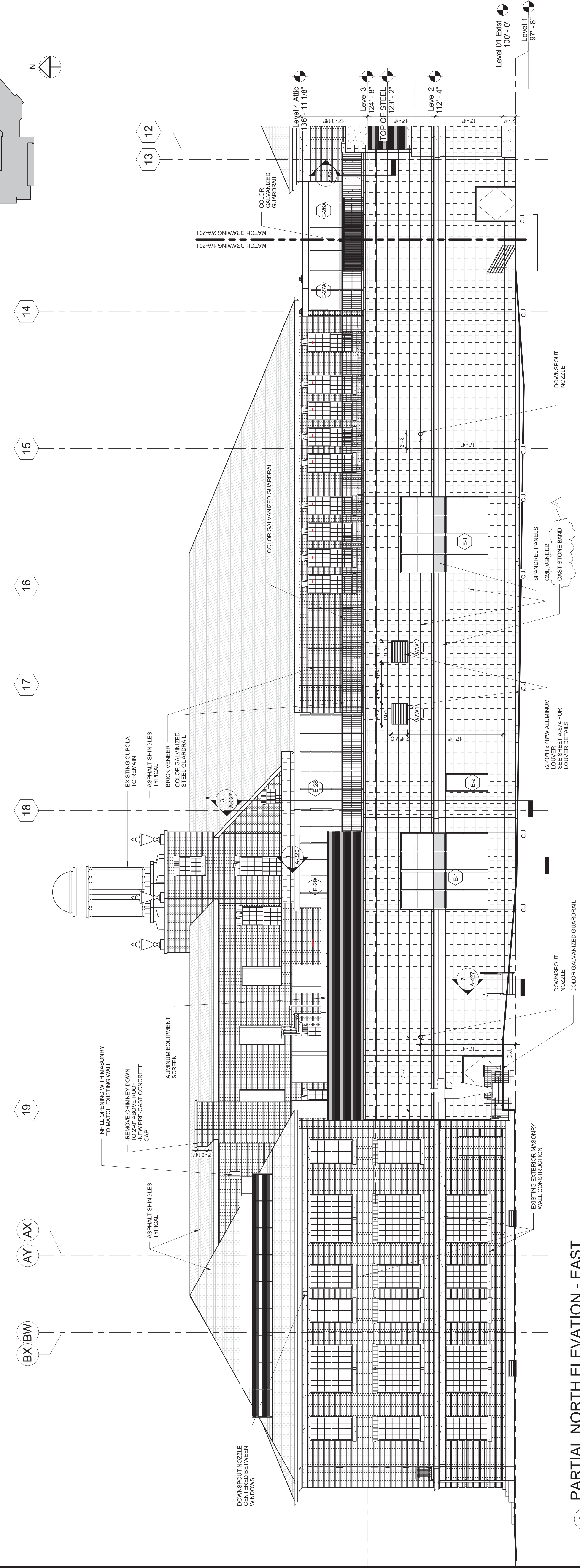
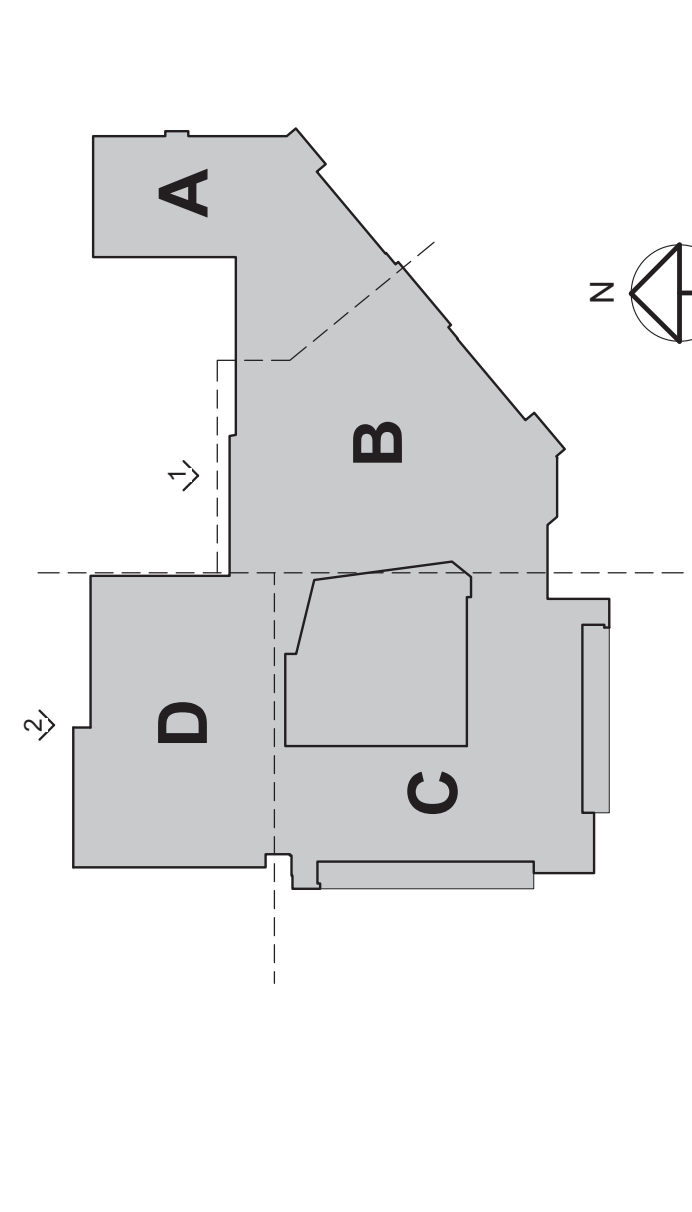
**ISSUE** 05-27-2011  
**JOB** H08004.01  
**DRAWN** Author  
**SCALE** As Indicated

**EXTERIOR ELEVATIONS**

**A-201**



**2 PARTIAL NORTH ELEVATION - WEST**  
1/8" = 1'-0"



**1 PARTIAL NORTH ELEVATION - EAST**  
1/8" = 1'-0"

No.	Date	Description
4.	02-27-2011	ADDENDUM #4

- CONSULTANTS:**
- SITE / CIVIL CONSULTANT**  
Vanasse Hangen Brustlin, Inc.  
6 Bedford Farms Drive, Suite 607  
Hartford, CT 06110  
860-444-8888
  - STRUCTURAL ENGINEER**  
JSN Associates, Inc.  
One Autumn Street  
Hartford, CT 06103  
862-433-8839
  - MECH/ELEC/PLUMBING/FP ENGINEER**  
Consulting Engineering Services  
811 Middle Street  
Hartford, CT 06103  
860-286-9771
  - SECURITY & TECHNOLOGY**  
R. G. Vanderveil Engineers, LLP  
274 Summer Street  
Boston, MA 02210  
781-547-4246
  - FOOD SERVICE**  
C. B. Associates  
153 Andover Street, Suite 209  
Danvers, MA 01923  
978-762-6464

# Portsmouth Middle School - Addition and Renovation

155 Parrott Avenue  
Portsmouth, NH 03801

ISSUED FOR PERMIT  
05-27-2011

**JCJ ARCHITECTURE**  
JCJ Architecture, PC  
38 Prospect Street  
Hartford, CT 06103

**ASSOCIATE ARCHITECT**  
DiStefano Architects  
23 High Street  
Hartford, CT 06103  
860-433-8701



P.L.C.	
P.M.	
D.T.L.	

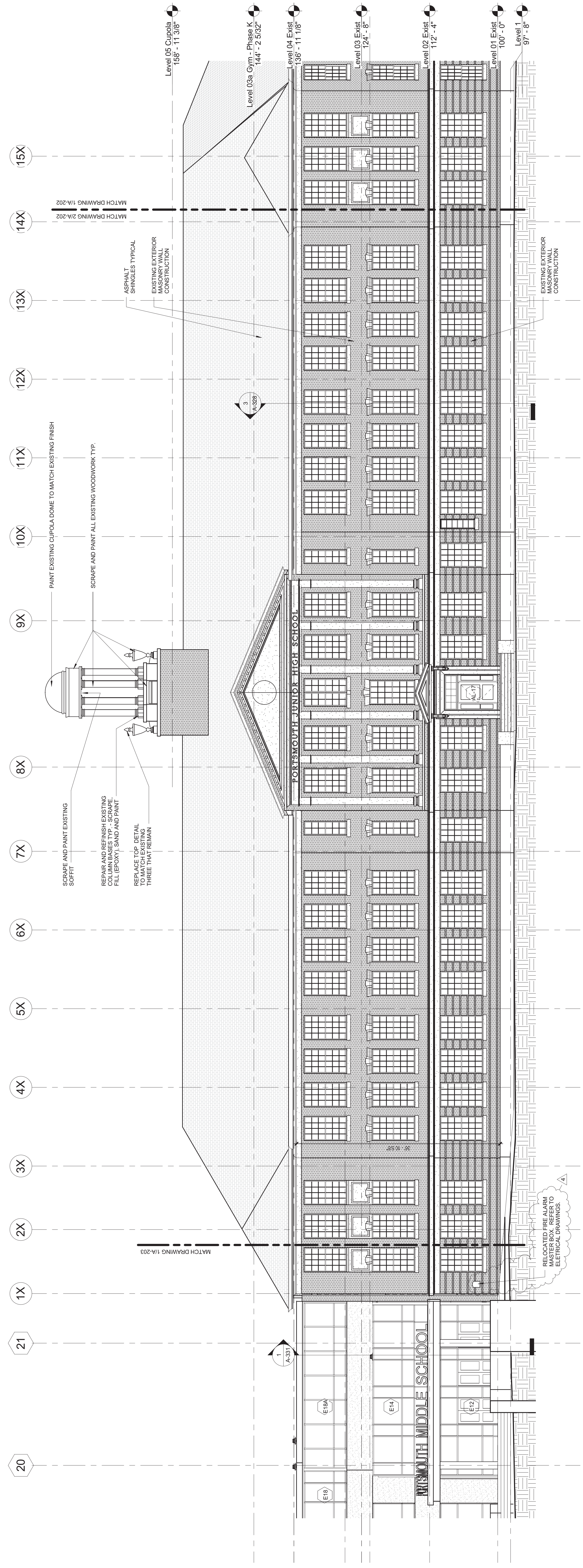
ISSUE	05-27-2011
JOB	H08004.01
DRAWN	Author
SCALE	As Indicated

**EXTERIOR ELEVATIONS**

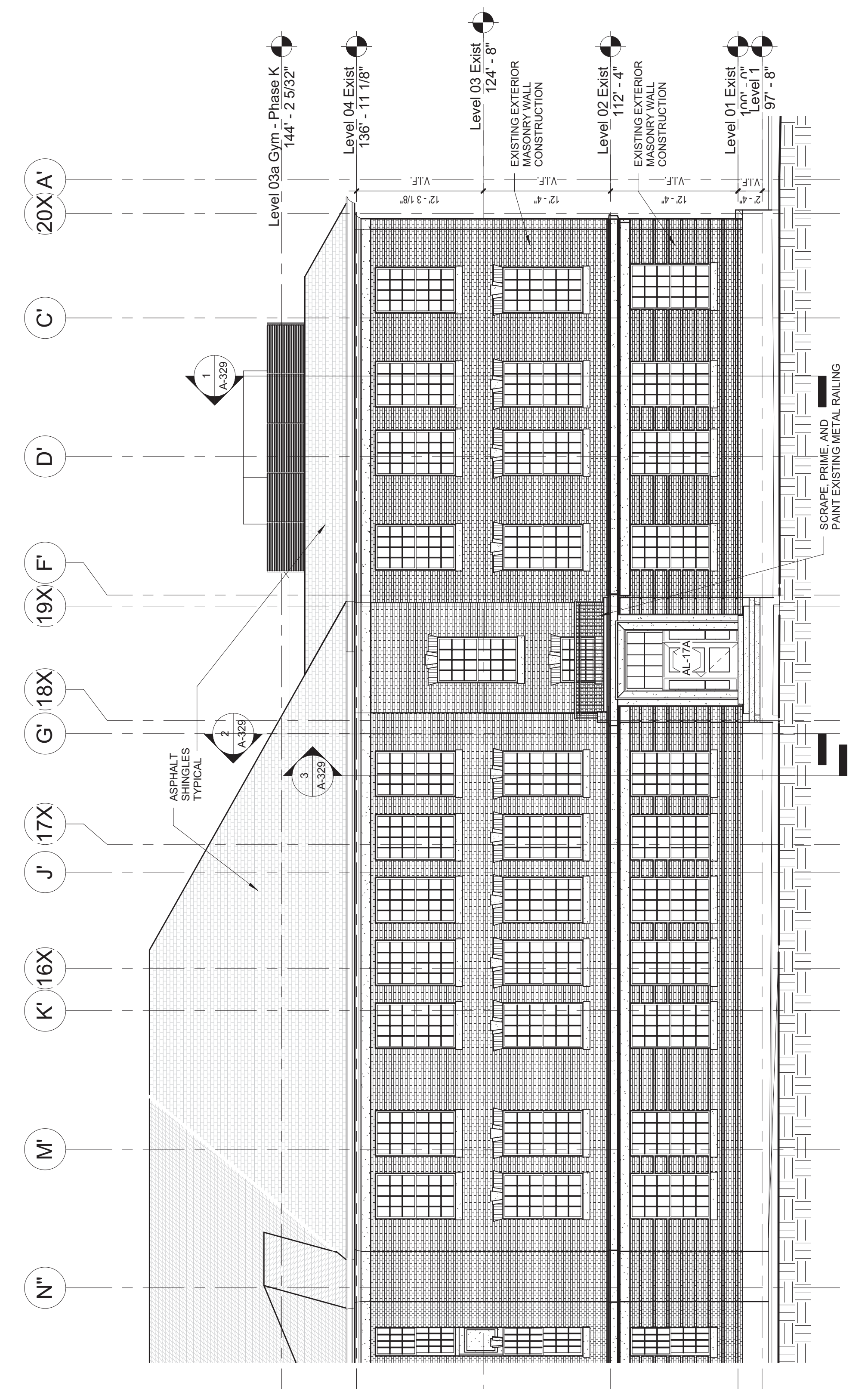
**A-202**

## EXISTING EXTERIOR REPAIR AND REPOINTING:

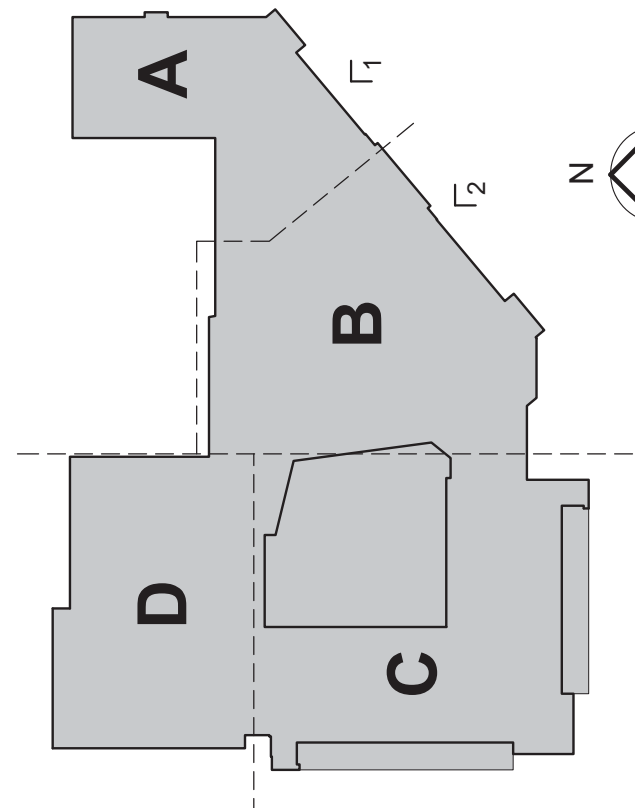
- PATCH/REPAIR ALL ABANDONED EXTERIOR ANCHORS AND PENETRATIONS TO MATCH ADJACENT MATERIAL.
- INSPECT ALL SOLDERED METAL ROOFING TO REMAIN AND REPAIR ALL DAMAGED OR OPEN JOINTS.



2 PARTIAL EAST ELEVATION - SOUTH  
1/8" = 1'-0"



1 PARTIAL EAST ELEVATION - NORTH  
1/8" = 1'-0"







No.	Date	Description
4.	02/27/2011	ADDENDUM #4

### EXISTING EXTERIOR REPAIR AND REPOINTING:

- PATCH REPAIR ALL ABANDONED EXTERIOR ANCHORS AND PENETRATIONS TO MATCH ADJACENT MATERIAL.
- INSPECT ALL SOLDERED METAL ROOFING TO REMAIN AND REPAIR ALL DAMAGED OR OPEN JOINTS.

CONSULTANTS:

- SITE / CIVIL CONSULTANT**  
Vanasse Hangen Brustlin, Inc.  
6 Bedford Farms Drive, Suite 607  
Boston, MA 02110  
617-552-2800
- STRUCTURAL ENGINEER**  
JSN Associates, Inc.  
One Autumn Street  
Boston, MA 02111  
617-552-2800
- MECH. ELEC. PLUMBING/PP ENGINEER**  
Consulting Engineering Services  
811 Middle Street  
Boston, MA 02111  
617-552-2800
- SECURITY & TECHNOLOGY**  
R. G. Vanderveil Engineers, LLP  
274 Summer Street  
Boston, MA 02210  
781-547-7426
- FOOD SERVICE**  
C. B. Associates  
153 Andover Street, Suite 209  
Danvers, MA 01923  
978-762-6464

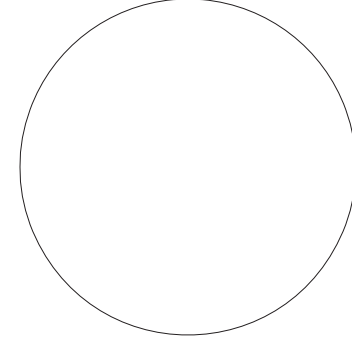
## Portsmouth Middle School - Addition and Renovation

155 Parrott Avenue  
Portsmouth, NH 03801

ISSUED FOR PERMIT  
05-27-2011

**JCJ ARCHITECTURE**  
JCJ Architecture, PC  
38 Prospect Street  
Hartford, CT 06103

**ASSOCIATE ARCHITECT**  
DiStefano Architects  
23 High Street  
Portsmouth, NH 03801  
603-433-8701

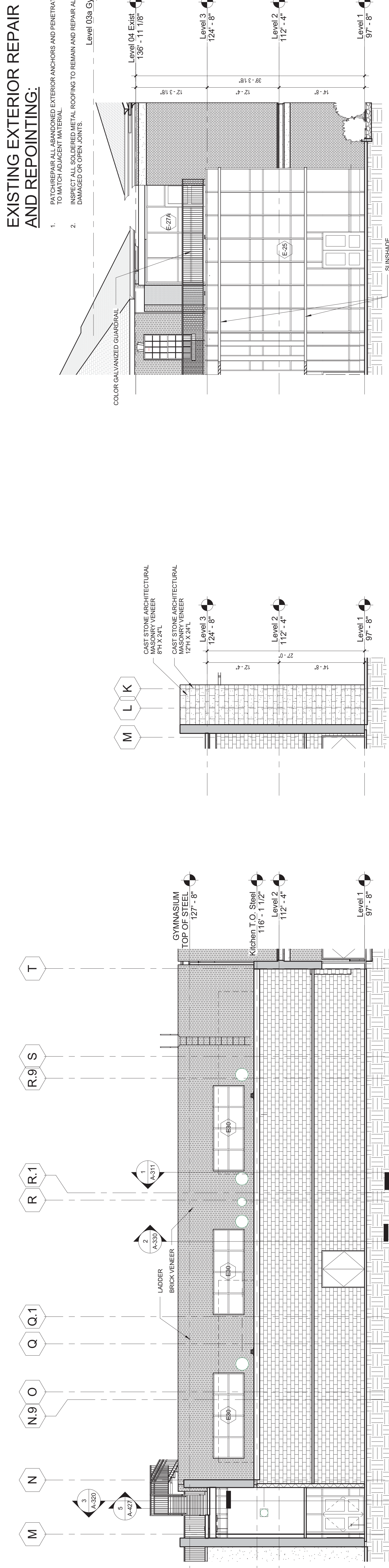


P.L.C.  
P.M.  
D.T.L.

ISSUE 05-27-2011  
JOB H08004.01  
DRAWN Author  
SCALE As Indicated

EXTERIOR ELEVATIONS

A-205

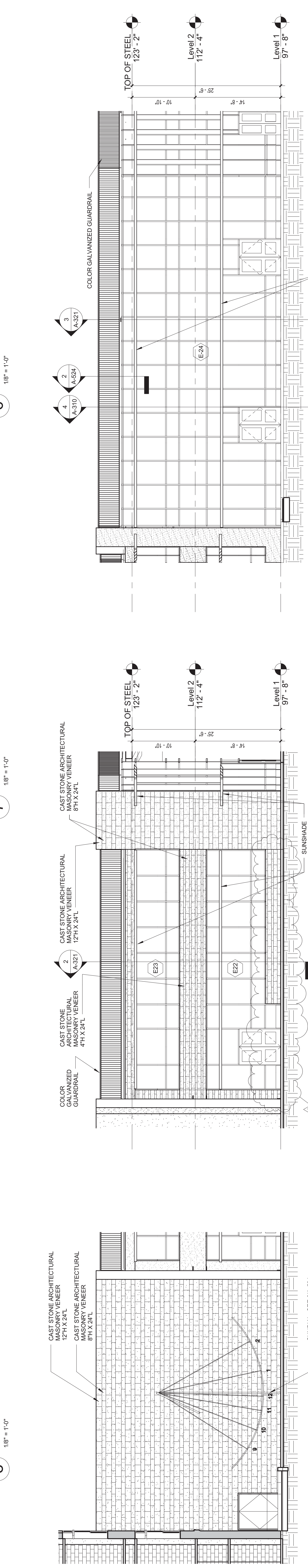


**7 PARTIAL EAST COURTYARD ELEVATION**  
1/8" = 1'-0"

**6 SOUTH-EAST COURTYARD ELEVATION**  
1/8" = 1'-0"

**4 NORTH-EAST COURTYARD ELEVATION**  
1/8" = 1'-0"

**5 NORTH COURTYARD ELEVATION**  
1/8" = 1'-0"

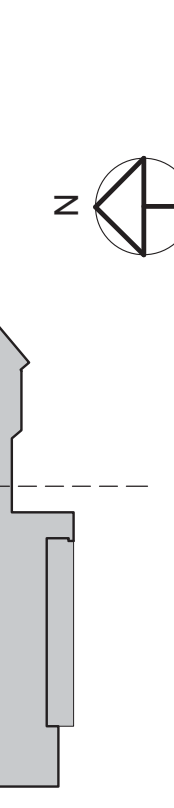
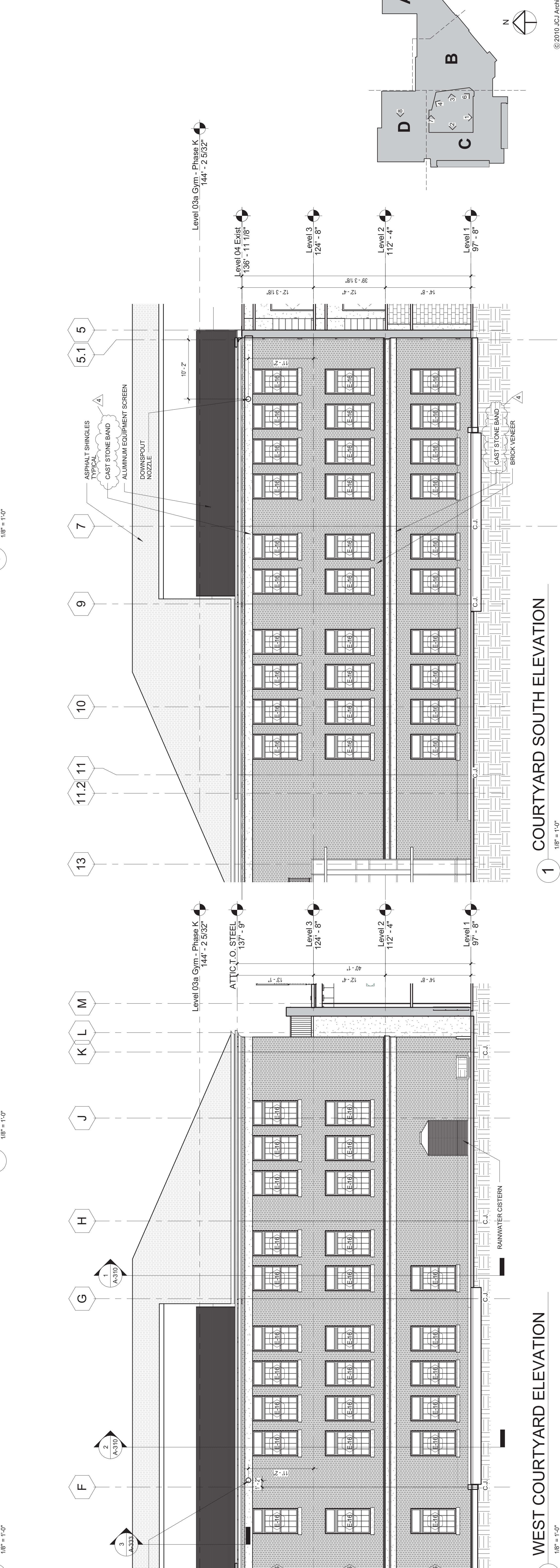


**3 EAST COURTYARD ELEVATION**  
1/8" = 1'-0"

**1 COURTYARD SOUTH ELEVATION**  
1/8" = 1'-0"

**2 WEST COURTYARD ELEVATION**  
1/8" = 1'-0"

**1 COURTYARD SOUTH ELEVATION**  
1/8" = 1'-0"



© 2010 JCJ Architects, PC

No.	Date	Description
4	02-27-2011	ADDENDUM #4

**CONSULTANTS:**

**SITE / CIVIL CONSULTANT**  
 Vanasse Hangen Brustlin, Inc.  
 6 Bedford Farms Drive, Suite 607  
 Danvers, MA 01923  
 978-752-4666

**STRUCTURAL ENGINEER**  
 JSN Associates, Inc.  
 One Adams Street  
 Danvers, MA 01923  
 978-752-4666

**MECH/ELEC/PLUMBING/FP ENGINEER**  
 Consulting Engineering Services  
 811 Middle Street  
 Danvers, MA 01923  
 978-752-4666

**SECURITY & TECHNOLOGY**  
 R. G. Vanderveil Engineers, LLP  
 274 Summer Street  
 Boston, MA 02210  
 781-547-4246

**FOOD SERVICE**  
 JSN Associates  
 153 Andover Street, Suite 209  
 Danvers, MA 01923  
 978-752-4666

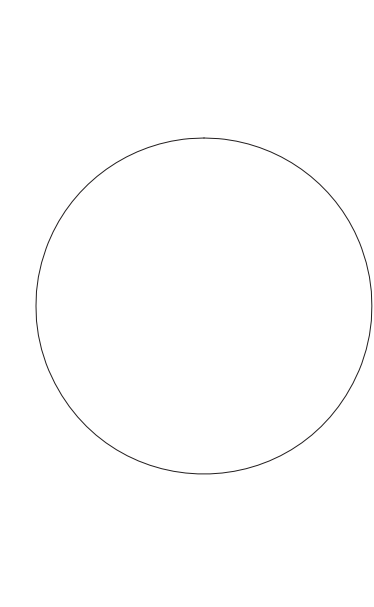
# Portsmouth Middle School - Addition and Renovation

155 Parrott Avenue  
 Portsmouth, NH 03801

ISSUED FOR PERMIT  
 05-27-2011

**JCJ ARCHITECTURE**  
 JCJ Architecture, PC  
 38 Prospect Street  
 Hartford, CT 06103

**ASSOCIATE ARCHITECT**  
 DiStefano Architects  
 23 High Street  
 Portsmouth, NH 03801  
 603-433-8701

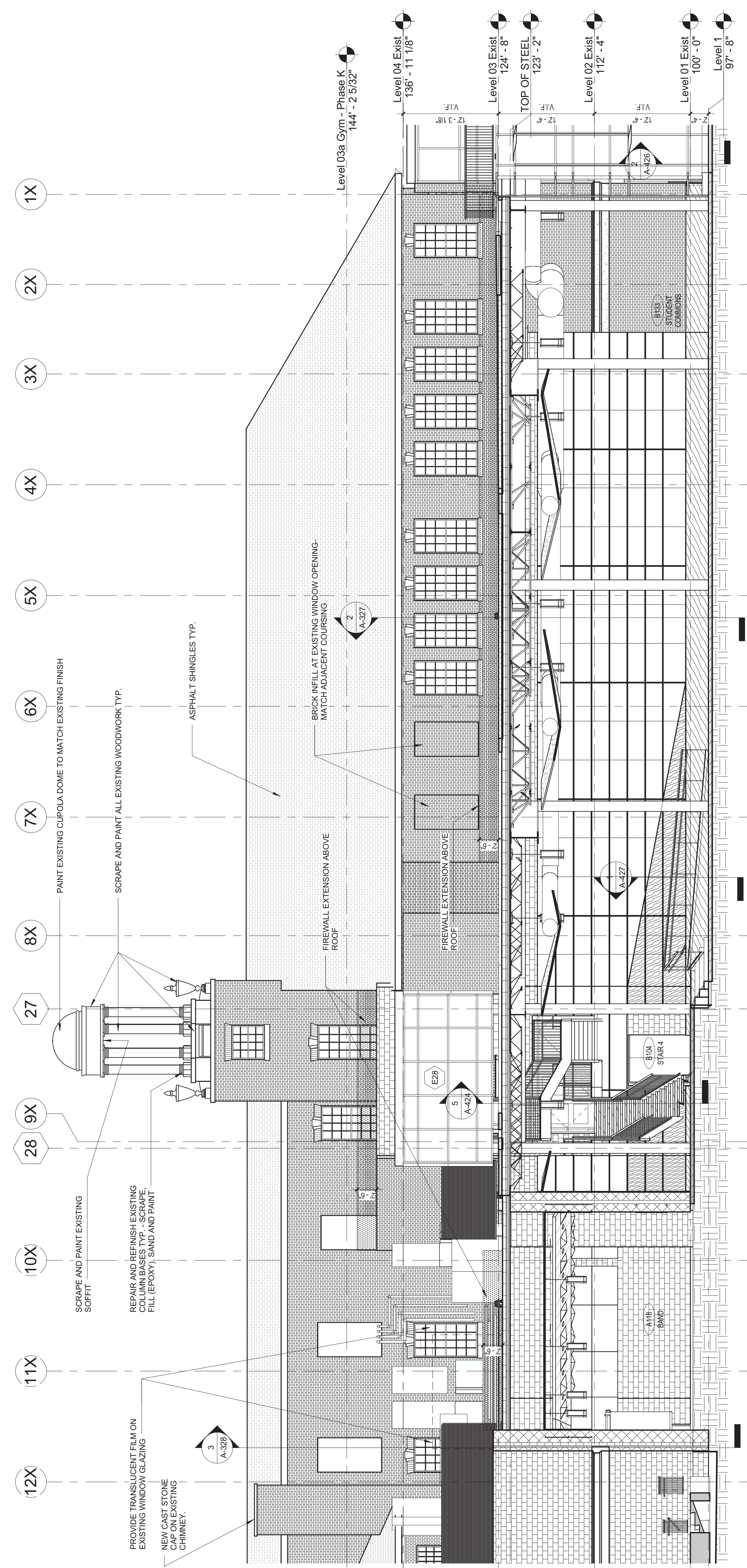


P.L.C.  
 P.M.  
 D.T.L.

ISSUE 05-27-2011  
 JOB H08004.01  
 DRAWN Author  
 SCALE As indicated

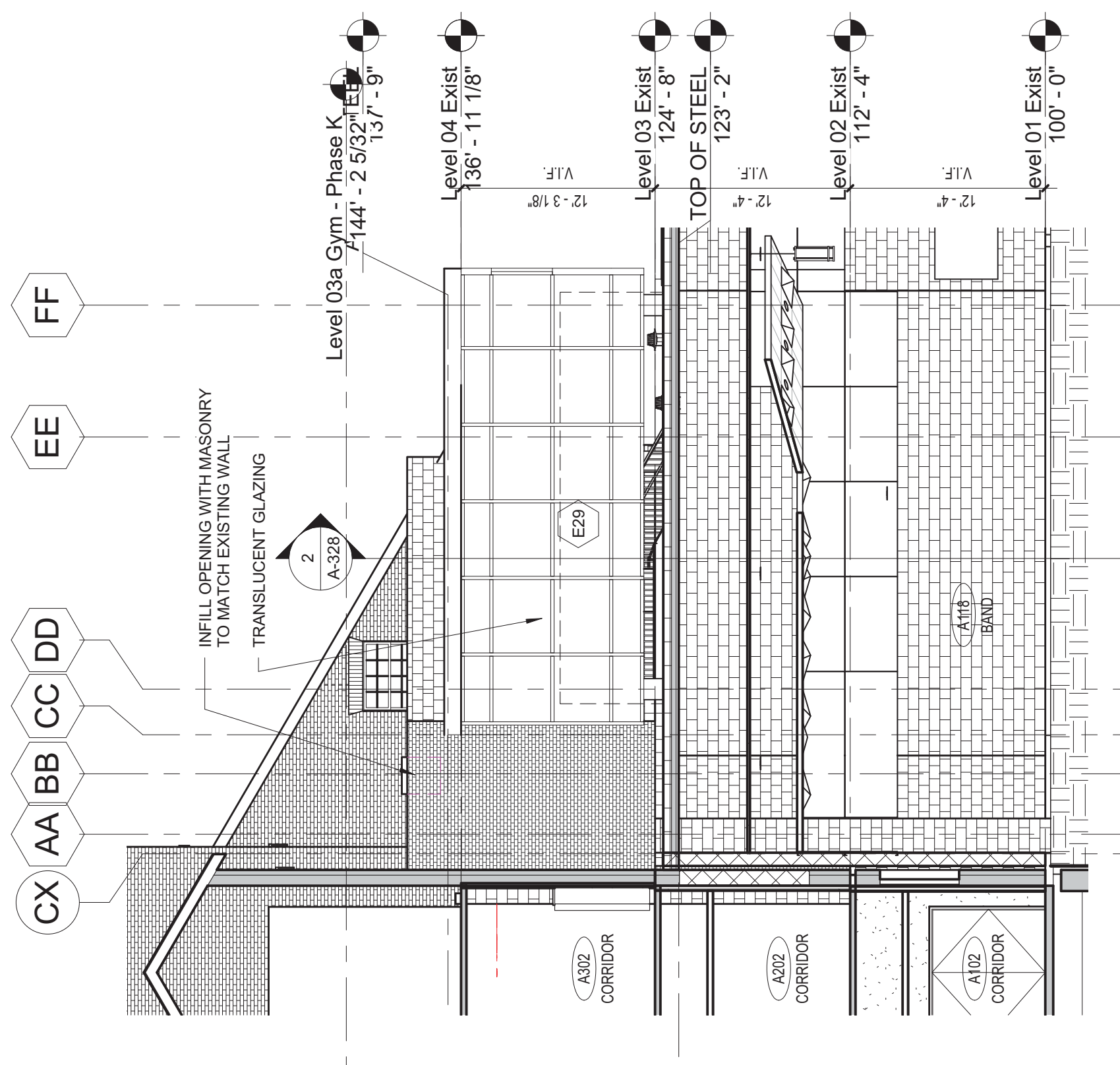
**EXTERIOR ELEVATIONS**

**A-206**

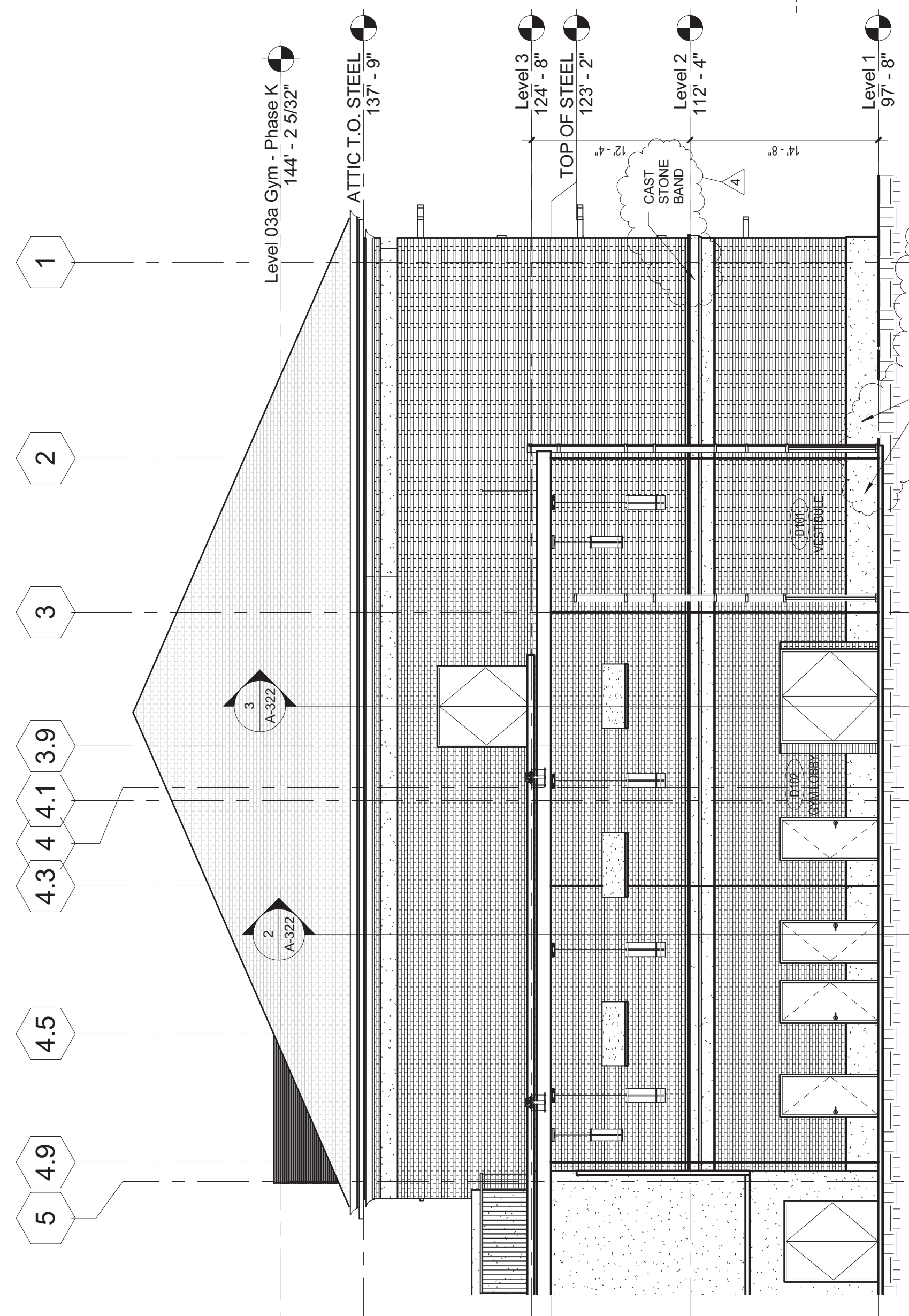


5 PARTIAL NORTH-EAST ELEVATION  
 1/8" = 1'-0"

3 PARTIAL SOUTH-EAST ELEVATION  
 1/8" = 1'-0"



2 PARTIAL SOUTH-WEST ELEVATION  
 1/8" = 1'-0"



1 PARTIAL NORTH ELEVATION  
 1/8" = 1'-0"

