

February 10, 2006

ADDENDUM NO. 4
to
PROJECT MANUAL
for

New Castle Avenue Roadway from Marcy Street to the Bridge over Piscataqua River Inlet and
Seawall Project
Bid Proposal #26-06
PORTSMOUTH, NEW HAMPSHIRE

NOTICE TO ALL BIDDERS

The attention of all Bidders submitting Proposals for the above noted Project is called to the following Addendum to the printed Specifications and Contract Drawings. The items set forth herein, whether omission, addition, or substitution are to be included in, and form part of, the Specifications and Drawings for the above named Project.

Make the following changes to the Bid Plan Set:

Insert the following 8 ½" x 11" sheet sketches adjacent to Sheet 10 of 49, Seawall Details:

SK-1A
SK-1B
SK-2

Make the following changes to Specification Section 670.6 – Seawall:

Insert the following articles:

- 1.1.2.9 The contractor shall coordinate the detailing and installation of the cast-in-place concrete seawall footing with the pre-cast concrete drainage catch basins to be installed along the curb line of Newcastle Avenue. The seawall footing shall be notched or recessed in the manner indicated below:
- 1.1.2.9.1 Modifications to the cast-in-place seawall footing shall be made to provide a footing notch for the following drainage catch basins:

NC-1
NC-24

See Sketch SK-1A and SK-1B.

The seawall footing shall be constructed with a full-depth notch that is 8" wider than the outside of the catch basin in each direction as shown on SK-1A and SK-

1B. Seawall footing face reinforcing shall be provided on all sides of the footing notch, and 4'-0" long #6 corner bars shall be provided at the top and bottom of all interior corners of footing notches. Contractor shall backfill the space between the catch basin and the seawall footing with crushed stone. Contractor shall coordinate the catch basin dimensions and seawall footing reinforcing details as required and indicate such on all related shop drawing submittals.

1.1.2.9.2 Modifications to the cast-in-place seawall footing shall be made to provide a footing recess for the following drainage catch basins:

NC-2
NC-4
NC-5
NC-7
NC-8
NC-10
NC-12

See Sketch SK-2.

The seawall footing shall be constructed with a locally recessed area that is 1'-0" wider than the outside of the catch basin in each direction as shown on SK-2. The top of the seawall footing shall be recessed only as deep as needed up to a maximum depth of 1'-0" to create clearance for the installation of the catch basin. The seawall footing reinforcing steel shall be bent down at 45 degrees to maintain cover. The catch basin sump dimension from the invert of the lowest pipe may be reduced by up to 6" (diminishing the overall depth of the catch basin) to provide additional adjustment if needed. The contractor may install up to a 2" thick compacted sand bed on top of the concrete seawall footing for elevation adjustment and leveling of the catch basin base if needed. Contractor shall backfill any space between the catch basin and the seawall footing with crushed stone. Contractor shall coordinate the catch basin dimensions and seawall footing reinforcing details as required and indicate such on all related shop drawing submittals.

3.2 Contractor shall submit Shop drawings and product data for approval to the engineer according to the provisions of NHDOT Standard Specifications for Road & Bridge Construction 2002, Section 105, for all seawall reinforcing steel and embedded items, stone facing masonry anchorage system, and all other appurtenances as needed or directed.

Make the following addition to NHDOT Standard Specifications for Road & Bridge Construction 2002 (As Amended), SECTION 105 – CONTROL OF THE WORK:

Insert the following articles:

105.02.1 The contractor shall coordinate the detailing and installation of the cast-in-place concrete seawall footing with the pre-cast concrete drainage catch basins to be installed along the curb line of Newcastle Avenue, and shall provide inter-related working drawings indicating such coordination at each location individually. The coordination of the catch basins and the seawall footing shall be specifically noted on the pre-cast concrete catch basin fabrication drawings, and seawall footing reinforcing steel fabrication drawings as required to facilitate the installation of each. Refer to specification section 670.6 – Seawall for additional information.

Question 1

I am confused with the bid items. What is the difference between Bid Item 203.2 Rock Excavation and Bid Item 2 Rock Excavation?

Answer 1

In general, there are two sets of bid items, each correspond to specific financing sources. Bid items 2 through 28 are related to the city water main construction. All other bid items are related to the wall and roadway items.

Question 2

In the Special Provisions-Amendment to Method of Measurement – there are three classifications for Rock –Bid Items 203.2A, 203.2B, and 203.2C. Are all these different methods of measurement included in the unit price bid for Rock Excavation?

Answer 2

No, the same answer as given in 1 above applies. Items 203.2A, 203.2B, and 203.2C are all subsidiary to the seawall.

Question 3

Bid Item 608.53-Detectable Warning Panels. I can not find specifications for these. Can you provide more information?

Answer 3

A Specification will be provided.

Question 4

Specifications page 148 paragraph 3.08-Trench Paving calls for 4” pavement – 2” binder and 2 ½” top course. Cross Sections on drawing 5 and 6 calls for 4” pavement – 2 ½” binder and 1 ½” top course. Please clarify.

Answer 4

The trench patch will be temporary, if needed, and will be 2-inches of top course. Spec and detail will be revised.

Question 5

Will temporary pavement be necessary for winter shut-down and associated with the seawall work be measured and paid under Bid Item 28?

Answer 5

No, all work associated with the seawall is subsidiary to the seawall. Bid Item #28 is for the water line only. See response to question 1 above.

There was a question from addendum #3 in which the answer needs to be changed. The following is the question and the answer that will supersede the answer on addendum #3.

Question

Bid Item #6 - gravel base for pavement- on pages 16 of the bid proposal form appears to be a repeat of bid items 304.1, 304.4 & 304.5 on page 11 of the bid proposal form. Please clarify.

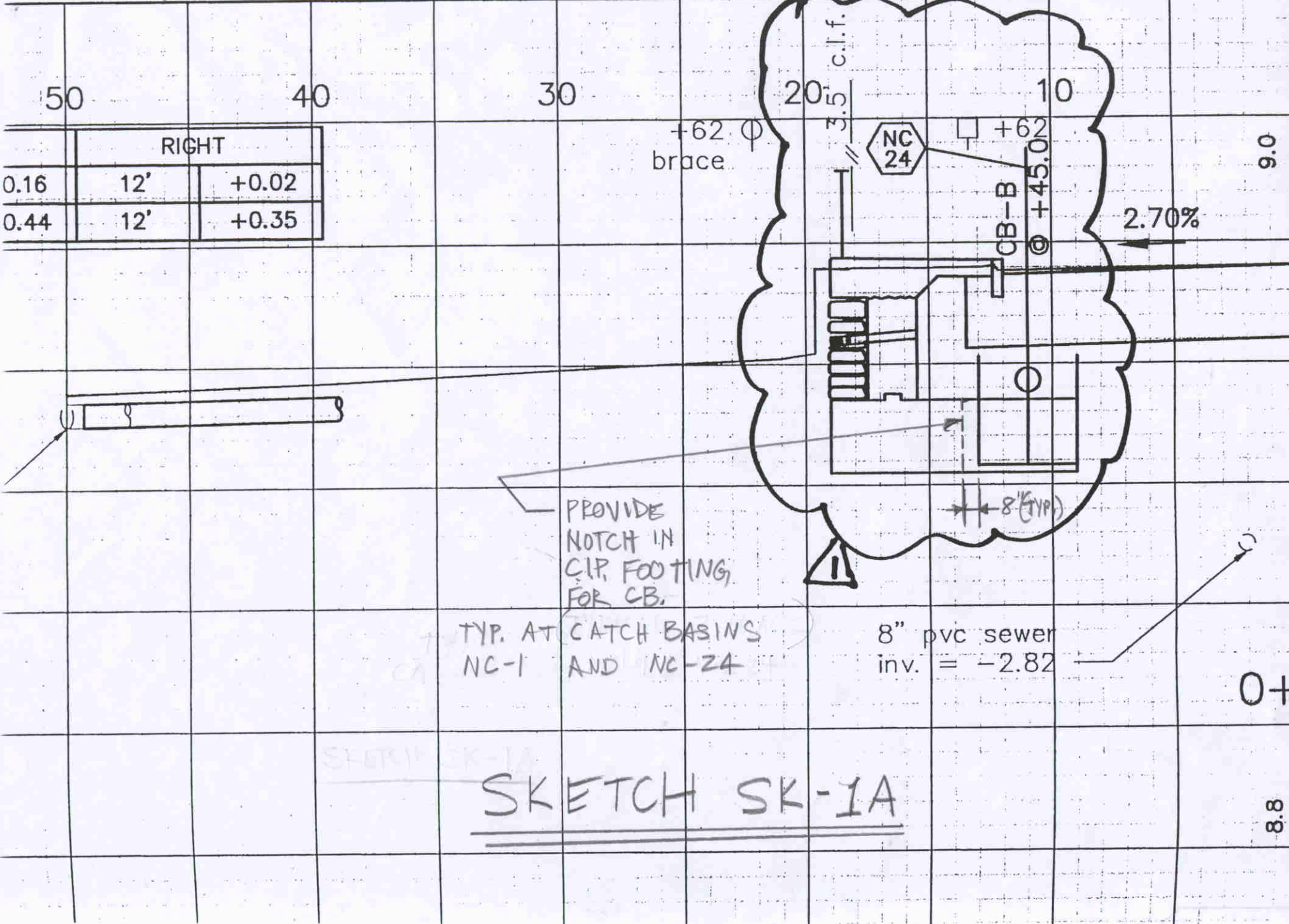
Answer

In general, there are two sets of bid items, each correspond to specific financing sources. Bid item #6 is related to the City Water Main construction. Bid items 2 through 28 are related to the City Water Main construction. All other bid items are related to the wall and roadway items."

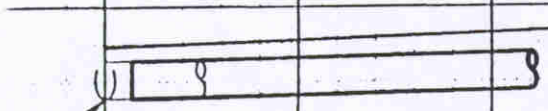
Please acknowledge receipt of this addendum within your proposal. Failure to do so may subject a bidder to disqualification.

PORTSMOUTH
NH

NEWCASTLE AVE SEAWALL RECONSTRUCTION



RIGHT		
0.16	12'	+0.02
0.44	12'	+0.35



SKETCH SK-1A

9.0

0+

8.8

PORTSMOUTH, NH -
NEWCASTLE AVE

FAY, SPOFFORD & THORNDIKE

PROJECT

PROJECT NUMBER

QN 053

SUBJECT

SEAWALL RECONSTRUCTION

SHEET NUMBER

2/8/00

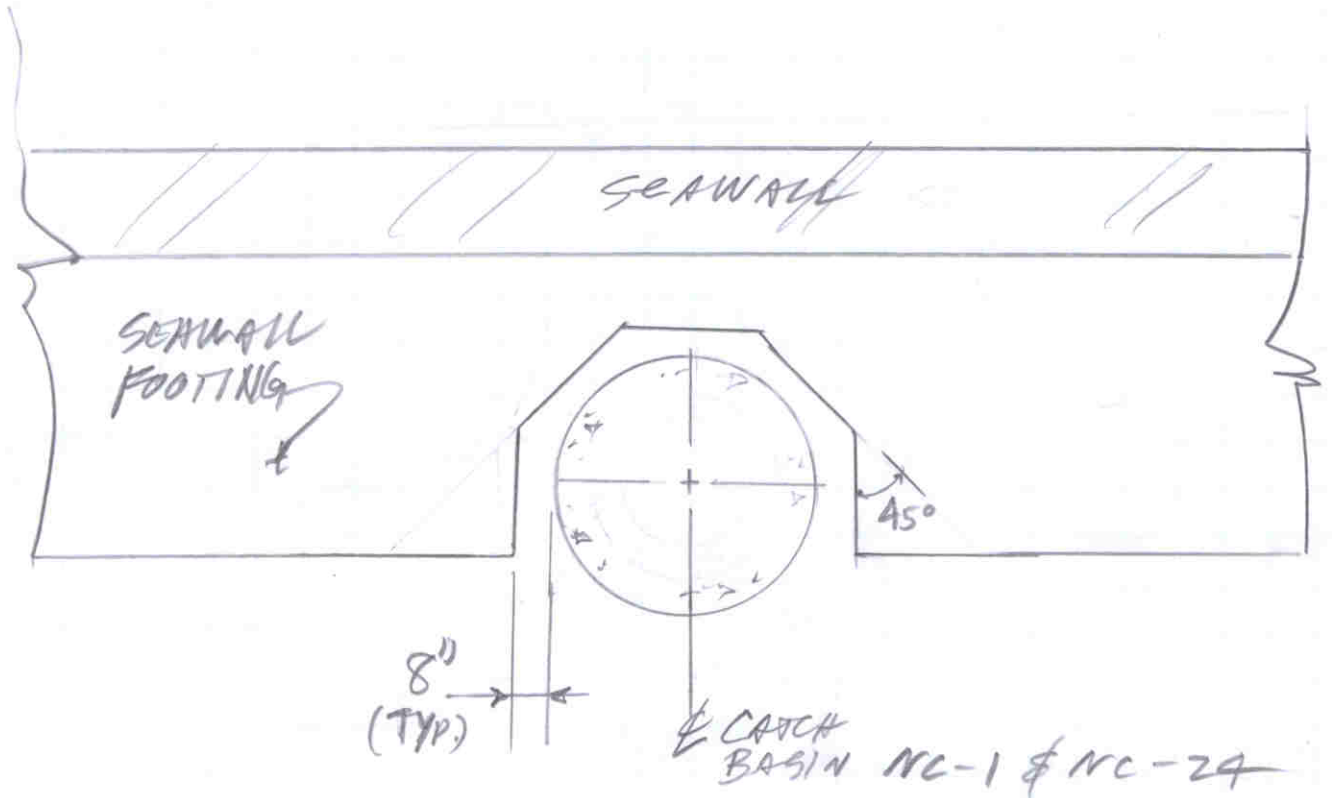
SEAWALL FOOTING / CATCH BASIN NOTCH

DATE

COMPUTED BY

JGG

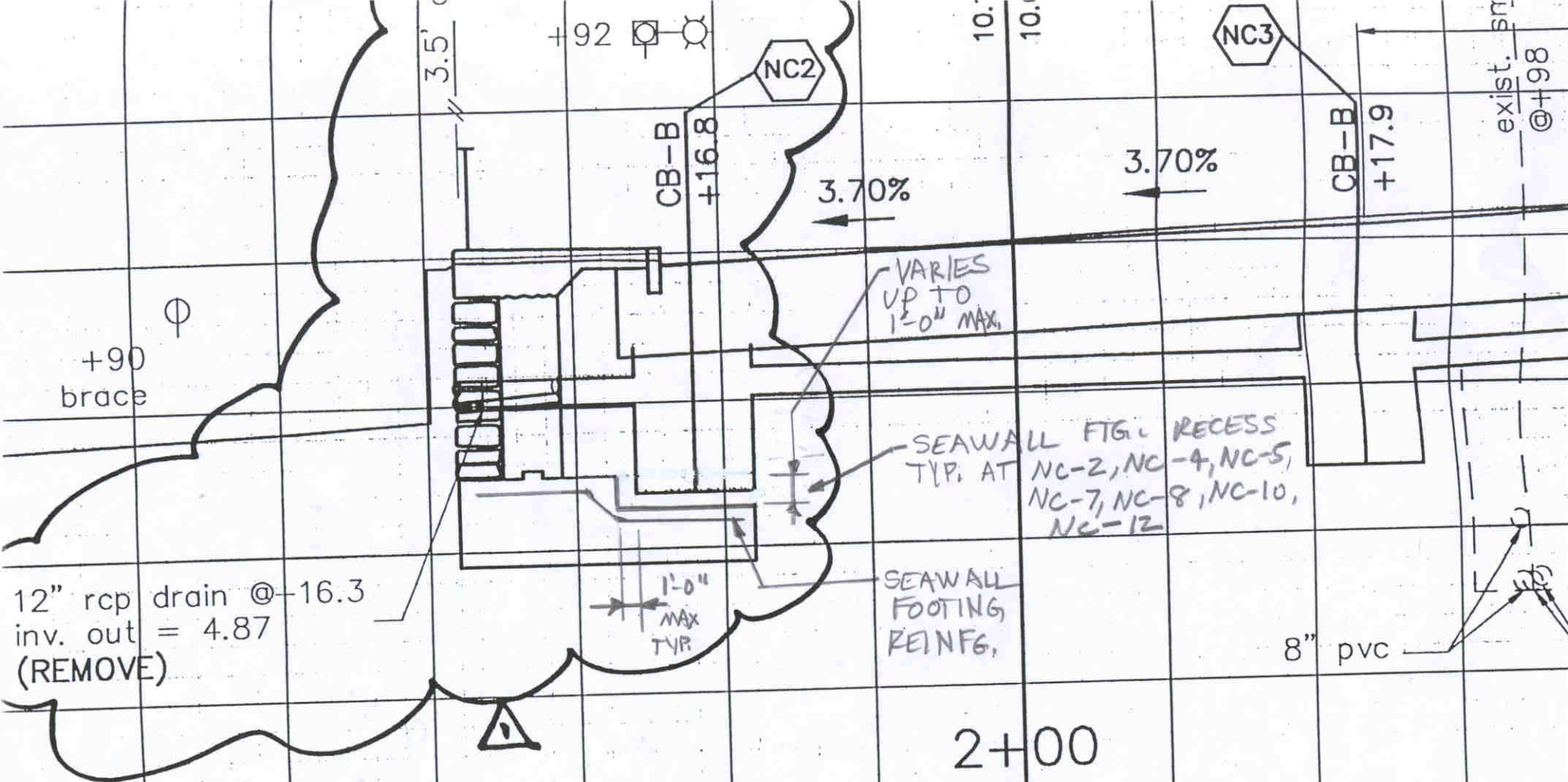
CHECKED BY



PLAN

NTS

SKETCH SK-1B



SKETCH SK-2

PORTSMOUTH, NH, - NEWCASTLE AVE SEAWALL RECONSTRUCTION