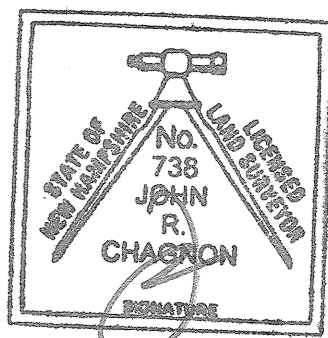
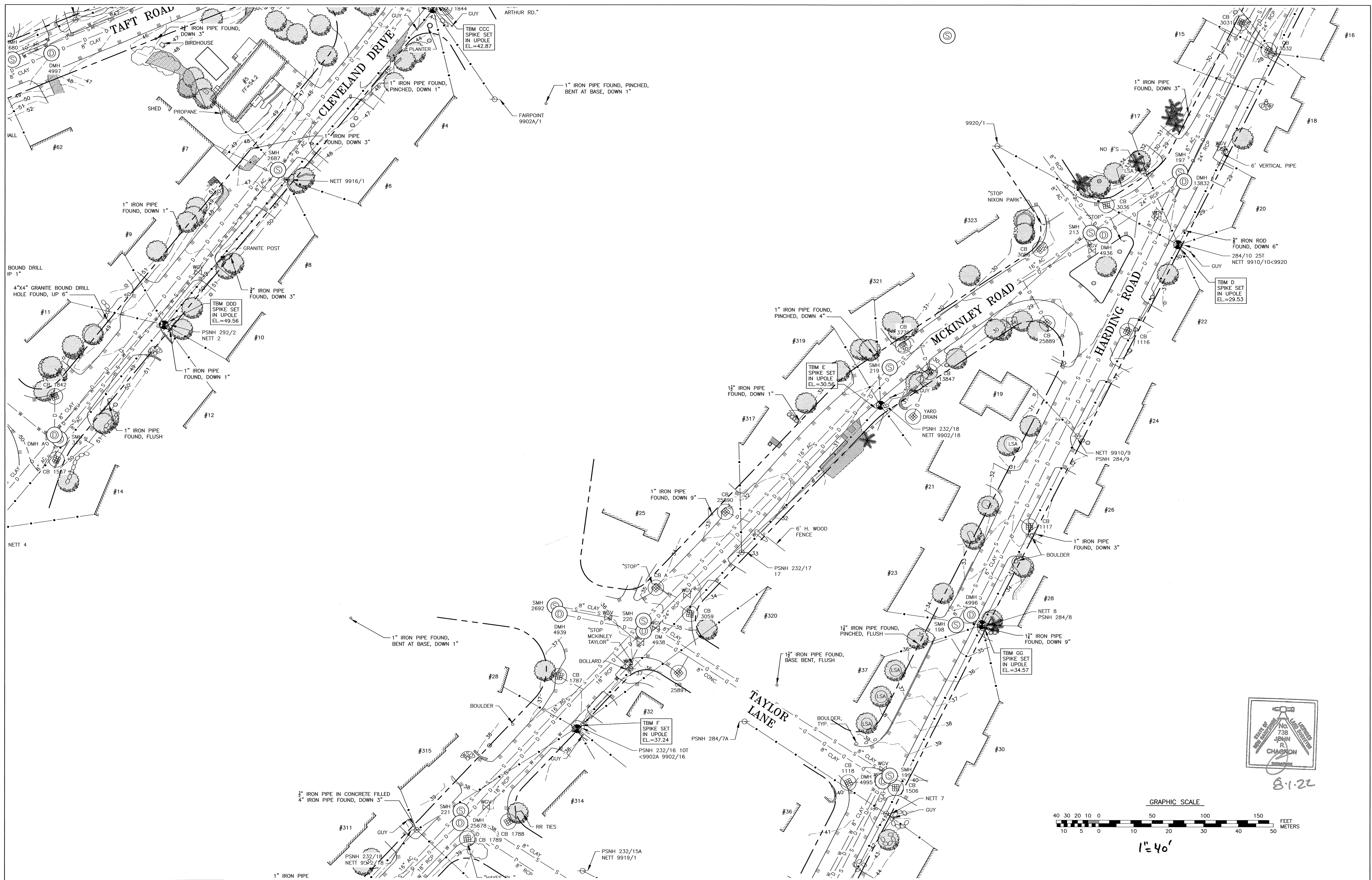
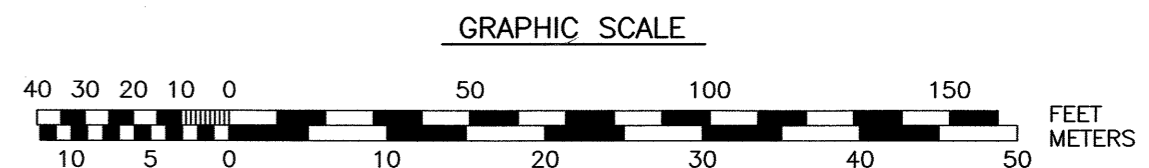


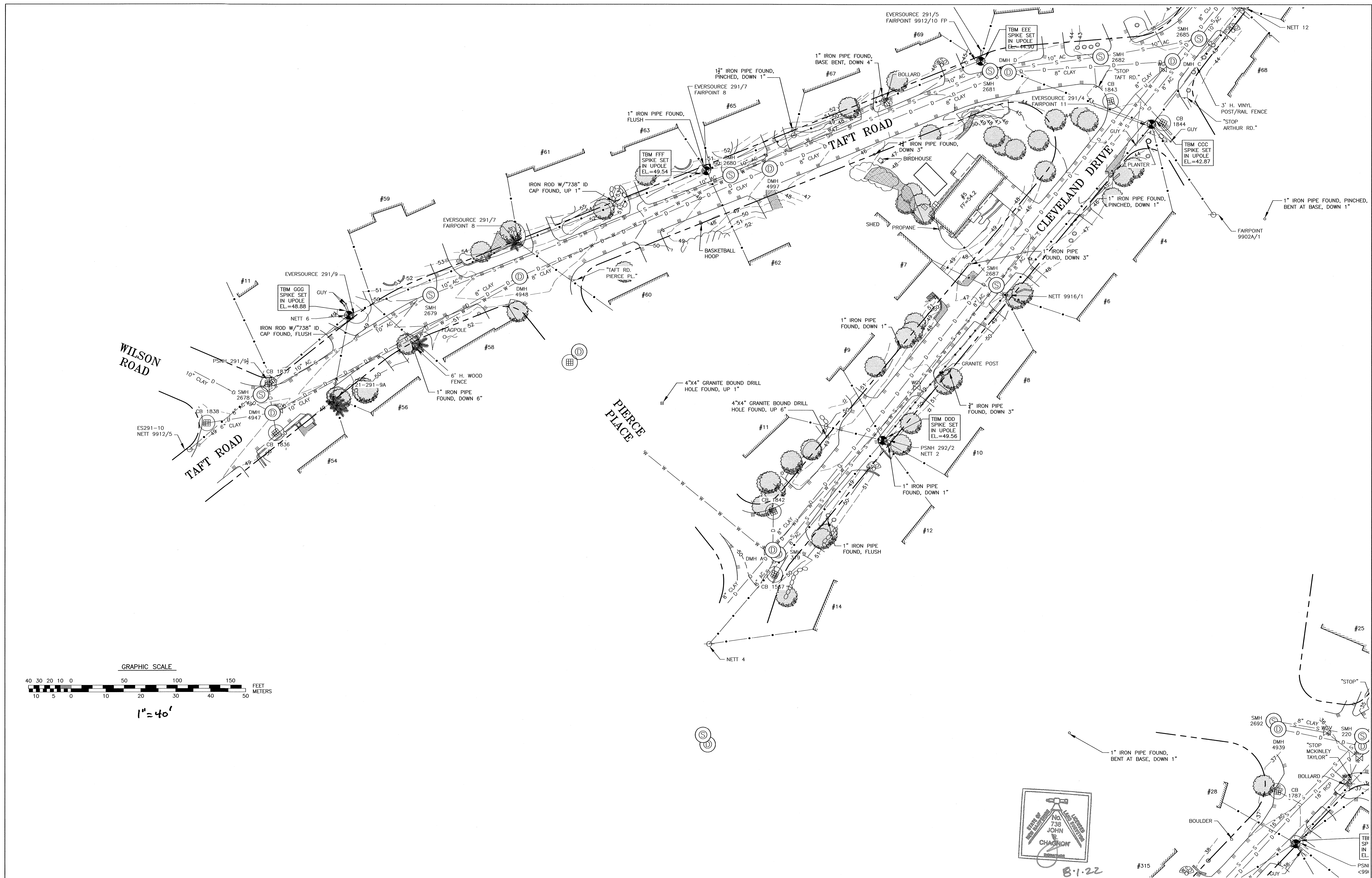
8-1-22



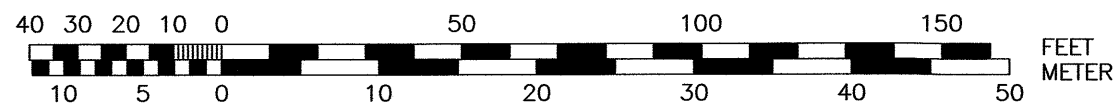
8-1-22



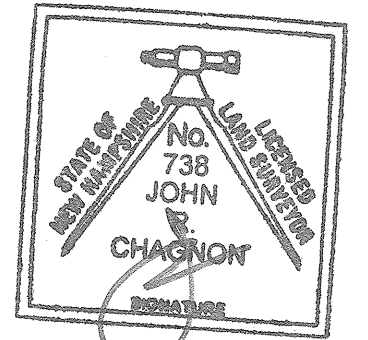
1" = 40'



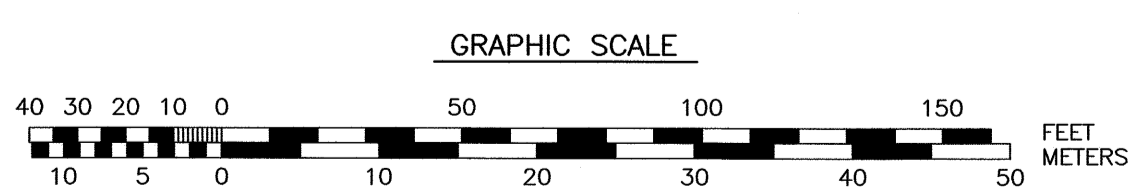
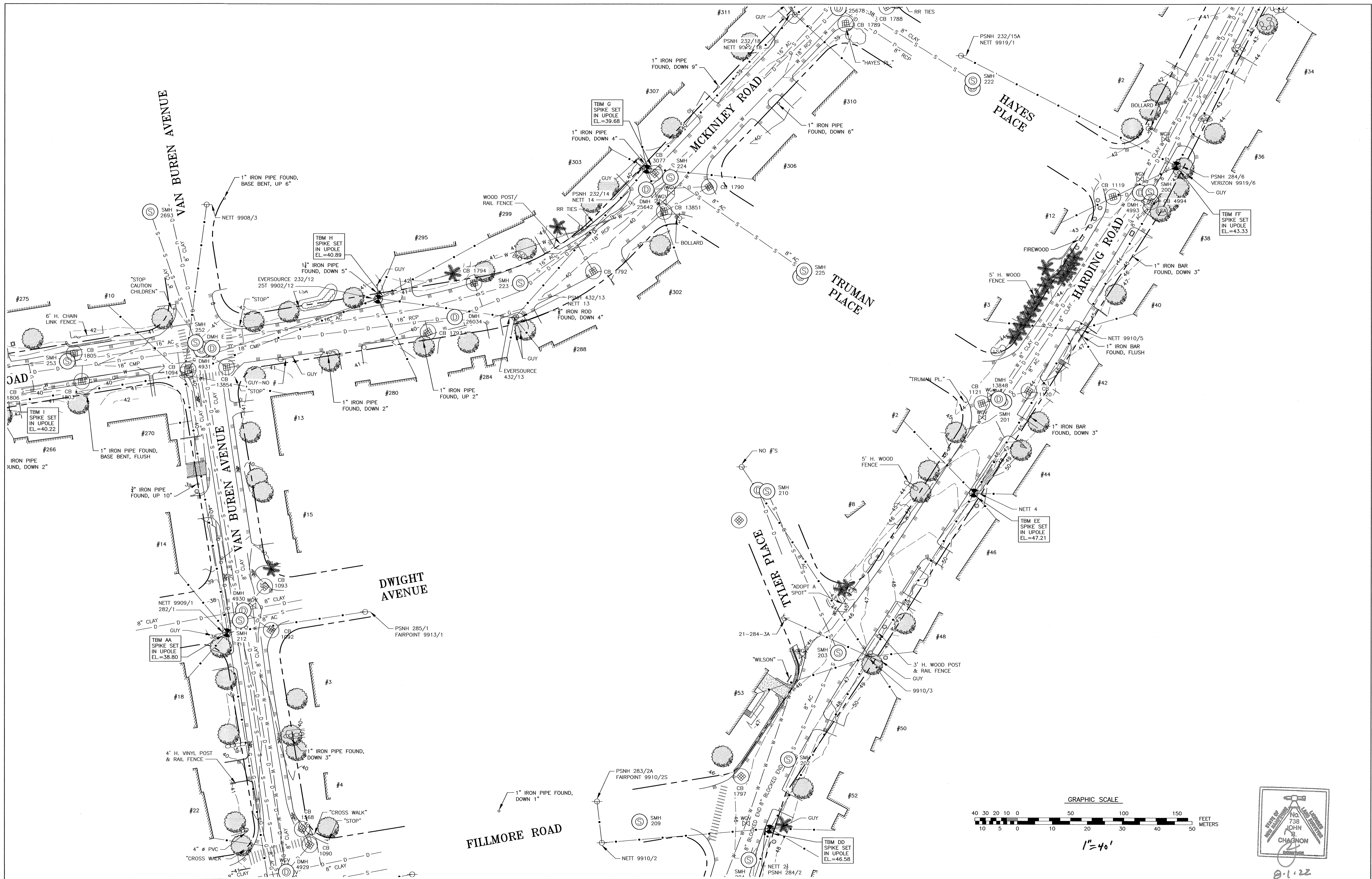
GRAPHIC SCALE



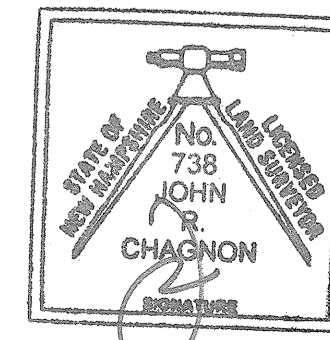
1" = 40'



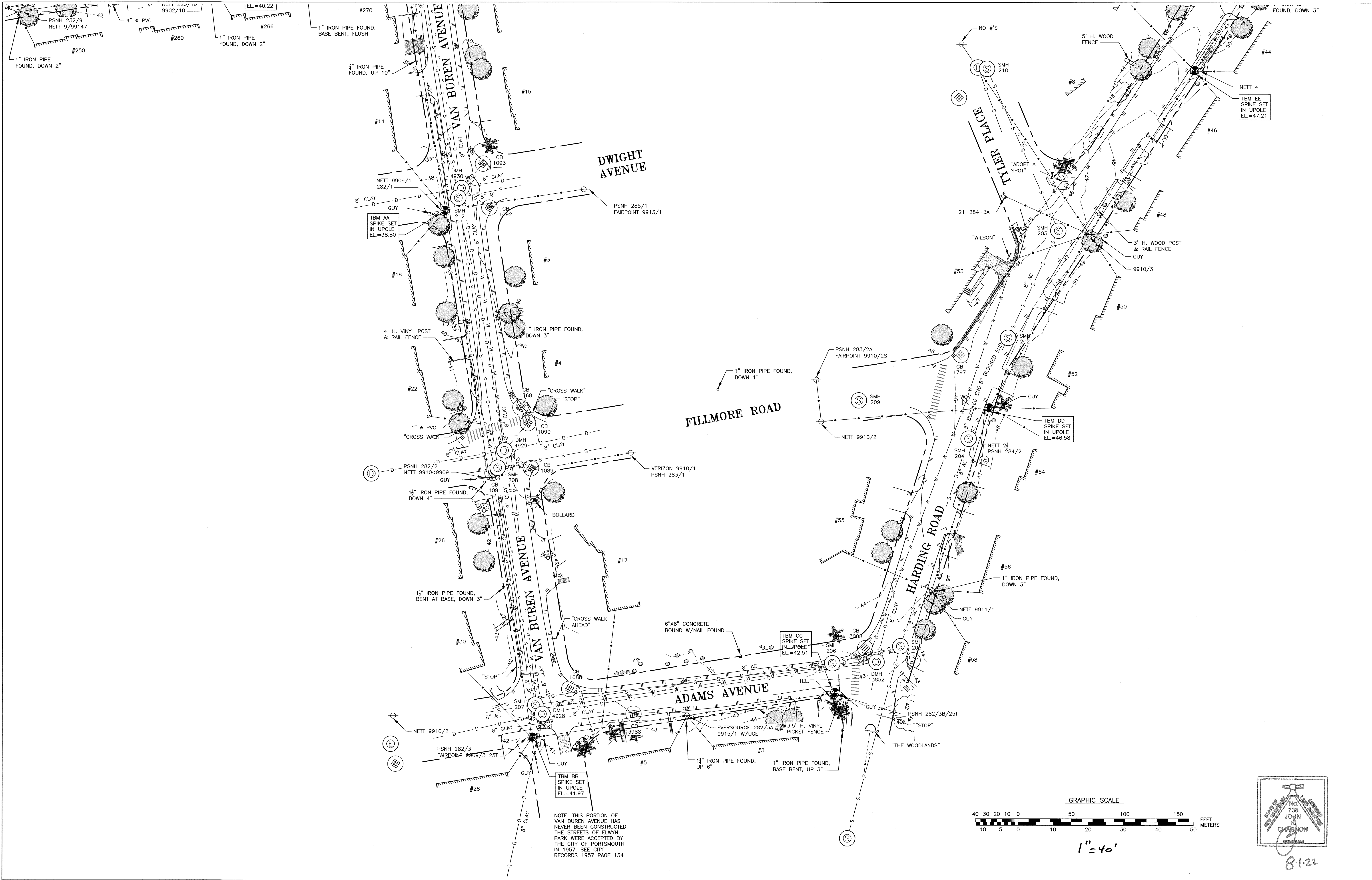
B-1-22



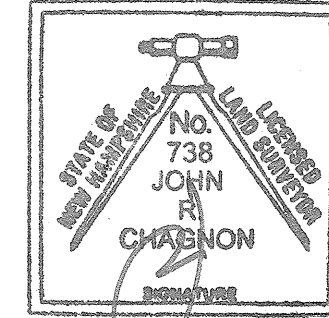
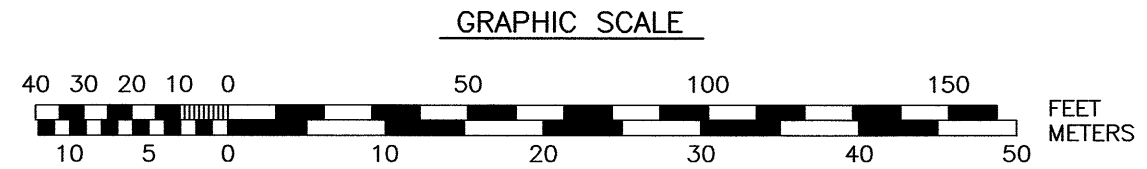
1" = 40'



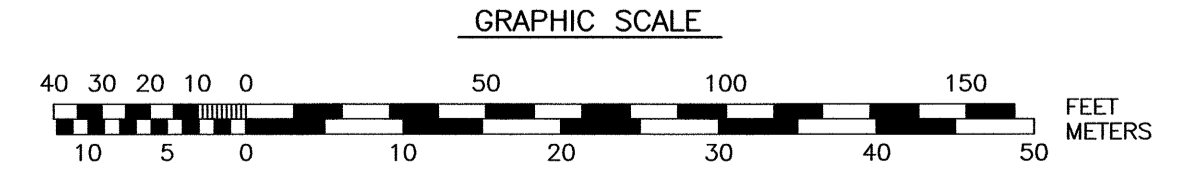
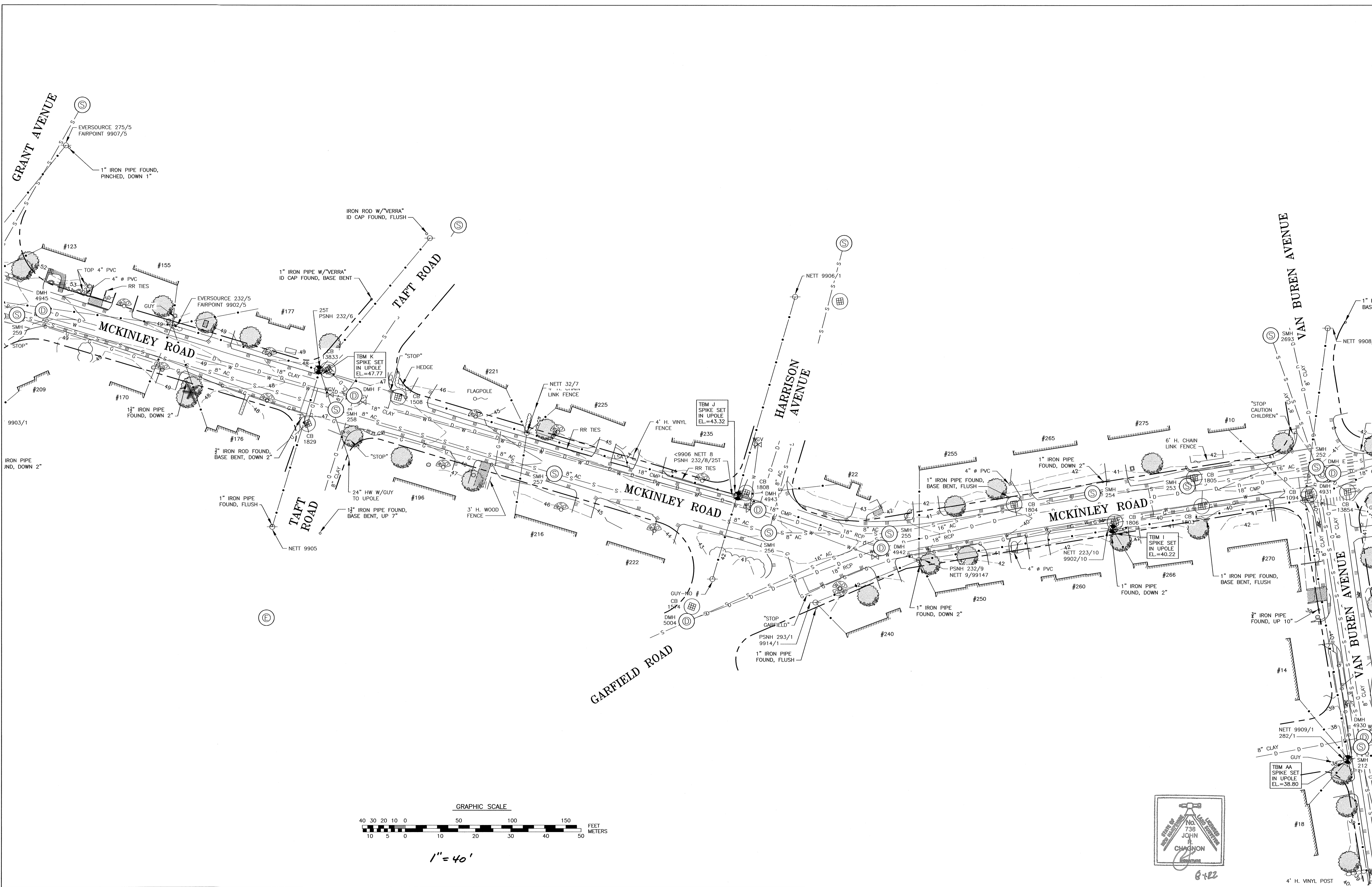
0-1-22



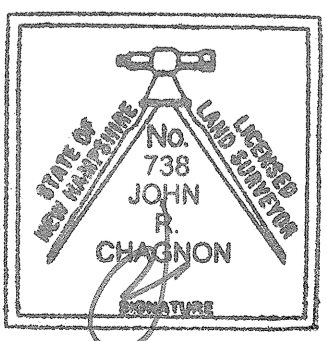
NOTE: THIS PORTION OF VAN BUREN AVENUE HAS NEVER BEEN CONSTRUCTED. THE STREETS OF ELWYN PARK WERE ACCEPTED BY THE CITY OF PORTSMOUTH IN 1957. SEE CITY RECORDS 1957 PAGE 134



8-1-22

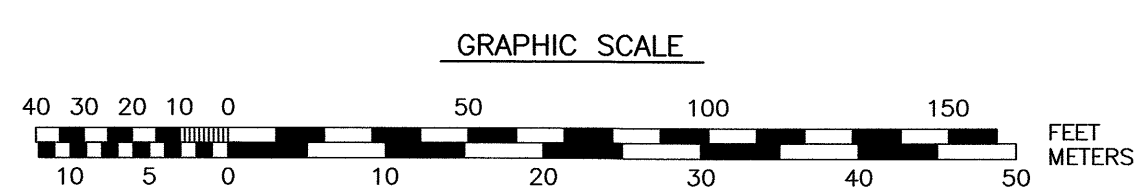
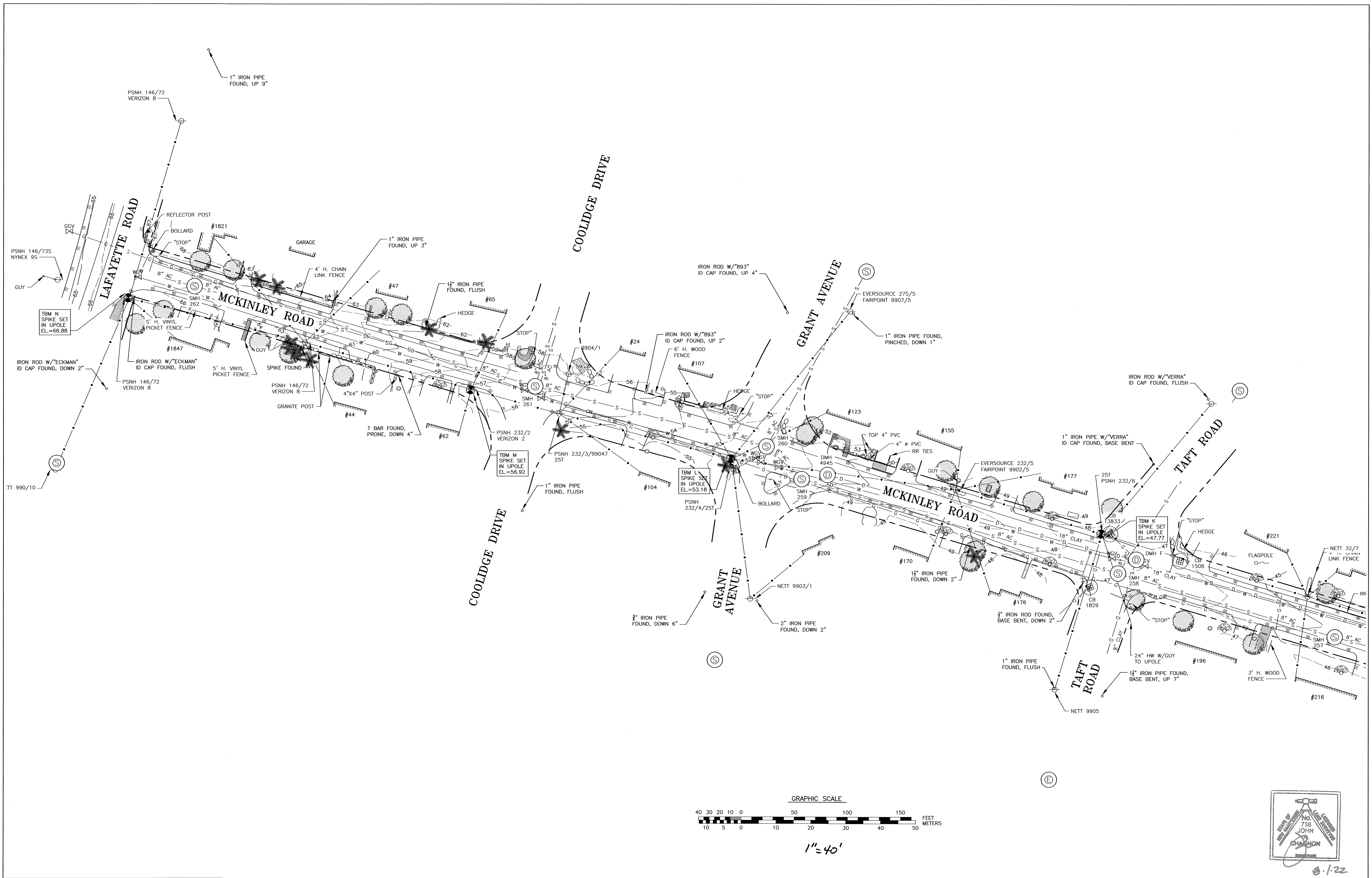


1" = 40'

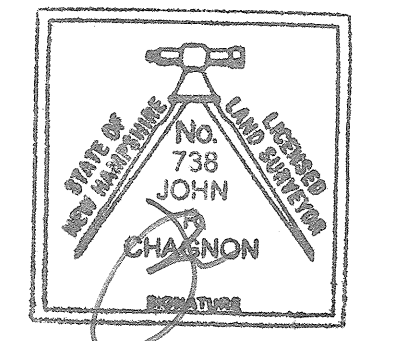


6-122

4' H. VINYL POST



1" = 40'



8.1.22

DRAINAGE STRUCTURE SCHEDULE																	
STRUCTURE	RIM	* = PIPE DIRECTION COMING FROM OTHER** = PIPES IN ADDITION TO APPROXIMATE "N,S,E,W" LOCATIONS															
		*NORTH		*SOUTH		*EAST		*WEST		SUMP		OTHER**		OTHER**		OTHER**	
		MEASURED	INVERT	MEASURED	INVERT	MEASURED	INVERT	MEASURED	INVERT	MEASURED	INVERT	MEASURED	INVERT	MEASURED	INVERT	MEASURED	INVERT
CB 1088	41.52			3.50	38.02					3.90	37.62						
CB 1089	39.86																
CB 1090	40.30	3.05	37.25	3.80	36.50					5.35	34.95						
CB 1091	40.20	3.85	36.35							5.45	34.75						
CB 1092	39.26	3.50	35.76							5.50	33.76						
CB 1093	38.69			3.00	35.69					5.05	33.64						
CB 1094	39.76	3.10	36.66							4.95	34.81						
CB 1097	19.57					2.95	16.62			3.65	15.92	2.65	16.92				
CB 1098	19.70	1.80	17.90	1.95	17.75	2.05	17.65			4.10	15.60						
CB 1106	23.80							3.00	20.80	3.80	20.00						
CB 1107	24.01					3.00	21.01			3.90	20.11						
CB 1108	27.03					3.10	23.93			3.90	23.13						
CB 1109	27.18	3.20	23.98							4.20	22.98						
CB 1116	28.86							2.65	26.21	4.30	24.56						
CB 1117	30.53							3.10	27.43	4.80	25.73						
CB 1118	39.67					2.30	37.37			3.20	36.47						
CB 1119	42.49					3.40	39.09			5.10	37.39						
CB 1120	43.93							2.30	41.63	4.50	39.43						
CB 1121	44.17					3.70	40.47			SILTED AT 1'							
CB 13833	46.84			2.65	44.19	3.50	43.34			5.50	41.34						
CB 13847	29.36	2.50	26.86							4.60	24.76						
CB 13851	39.01	3.30	35.71							4.50	34.51						
CB 13854	40.09	3.45	36.64							5.15	34.94						
CB 1506	39.97							2.90	37.07	3.90	36.07						
CB 1508	45.84			2.90	42.94					4.15	41.69						
CB 1510	34.84					1.00	33.84			2.20	32.64						
CB 1567	49.49	4.70	44.79							6.70	42.79						
CB 1568	39.66			1.85	37.81					3.70	35.96						
CB 1574	40.50			2.30	38.20					3.90	36.60						
CB 1787	35.89			3.50	32.39					5.10	30.79						
CB 1788	37.53			2.50	35.03					3.40	34.13						
CB 1789	37.88	3.20	34.68							4.30	33.58						
CB 1790	38.95			2.95	36.00					4.35	34.60						
CB 1792	39.24	2.55	36.69							4.45	34.79						
CB 1793	39.24			3.40	35.84					5.30	33.94	3.40	35.84				
CB 1794	39.82			2.90	36.92					4.20	35.62						
CB 1797	45.74			3.35	42.39					5.05	40.69						
CB 1803	39.38	2.55	36.83							3.50	35.88						
CB 1804	29.82			2.45	27.37					3.90	25.92						
CB 1805	38.76			2.20	36.56					4.25	34.51						
CB 1806	39.26	1.80	37.46							2.90	36.36						
CB 1808	42.98			3.75	39.23					5.25	37.73						
CB 1829	46.84	2.25	44.59	2.20	44.64					3.80	43.04						
CB 1836	48.58	3.95	44.63							5.10	43.48						
CB 1837	47.47			3.00	44.47					5.90	41.57						
CB 1838	48.74					3.65	45.09			7.70	41.04						
CB 1842	49.07			4.40	44.67					5.75	43.32						
CB 1843	42.72			2.65	40.07					4.50	38.22						
CB 1844	42.09	3.50	38.59							5.20	36.89						
CB 1847	40.39					5.35	35.04	5.15	35.24	5.35	35.04						
CB 1849	34.31					4.00	30.31			5.20	29.11						
CB 3031	27.42					2.35	25.07			3.90	23.52						
CB 3032	27.52	3.00	24.52							4.50	23.02						
CB 3036	28.45	2.30	26.15			2.75	25.70			4.55	23.90						
CB 3056	28.65					3.30	25.35			4.55	24.10						
CB 3059	34.13	2.65	31.48							4.65	29.48						
CB 3077	39.19			3.80	35.39					5.00	34.19						
CB 3088	43.17			4.15	39.02					4.50	38.67						
CB 3770	29.72			3.00	26.72					4.70	25.02						
CB 3988	41.88	3.30	38.58							4.70	37.18						
CB 4994	42.33	2.15	40.18							4.30	38.03						
CB 13833	46.84			2.65	44.19	3.50	43.34			5.50	41.34						
CB 13847	29.36	2.50	26.86							4.60	24.76						
CB 13851	39.01	3.30	35.71							4.50	34.51						
CB 13854	40.09	3.45	36.64							5.15	34.94						
CB 25880	33.93	4.50	29.43			2.80	31.13	4.00	29.93	4.70	29.23						
CB 25889	27.85	1.90	25.95							3.90	23.95						
CB 25890	32.15			2.15	30.00					4.05	28.10						
CB 25891	35.38	2.20	33.18							3.65	31.73						
CB A	34.19			2.90	31.29					4.65	29.54						

DMH 1848	35.61	5.70	29.91	5.60	30.01												
DMH 1850	34.12	4.65	29.47	4.55	29.57			4.05	30.07								
DMH 3040	27.36	7.30	20.06	7.10	20.26												
DMH 4928	42.08	6.00	36.08	6.00	36.08	6.00	36.08	6.00	36.08								
DMH 4929	40.71	5.55	35.16	5.45	35.26	5.55	35.16	5.45	35.26			5.00	35.71	5.30	35.41	5.10	35.61
DMH 4930	40.23	6.60	33.63	6.50	33.73	6.50	33.73	5.90	34.33								
DMH 4931	40.75	6.85	33.90	5.35	35.40	7.35	33.40	7.40	33.35			5.35	35.40				
DMH 4935	19.96	3.45	16.51	3.40	16.56	3.30	16.66										
DMH 4936	29.36	4.85	24.51			5.00	24.36	5.00	24.36								
DMH 4938	35.73	6.10	29.63	6.00	29.73	5.20	30.53	5.20	30.53								
DMH 4939	37.79	5.15	32.64			5.15	32.64	5.15	32.64								
DMH 4942	41.59			6.10	35.49	6.10	35.49	6.05	35.54								
DMH 4943	43.25	5.95	37.30			6.10	37.15	6.00	37.25			4.60	38.65				
DMH 4945	50.50																
DMH 4947	48.97	4.65	44.32	5.50	43.47	5.90	43.07	6.15	42.82			5.55	43.42	5.95	43.02		
DMH 4948	51.69					5.90	45.79	5.90	45.79								
DMH 4952	40.93	6.40	34.53	6.40	34.53			6.30	34.63								
DMH 4993	42.92	6.30	36.62	6.20	36.72	3.25	39.67	4.15	38.77								
DMH 4995	40.32			6.90	33.42	3.25	37.07	4.00	36.32			7.00	33.32				
DMH 4996	34.01	7.05	26.96	5.85	28.16												
DMH 4997	47.82					6.55	41.27	6.55	41.27								
DMH 5004	41.02	10.10	30.92														
DMH 13831	28.34	5.65	22.69	5.60	22.74												
DMH 13832	28.82	5.00	23.82					4.95	23.87								
DMH 13848	44.65	6.75	37.90	BLOCKED		3.80	40.85	3.70	40.95			BLOCKED					
DMH 13852	43.23	6.15	37.08					6.15	37.08			4.90	38.33				
DMH 25642	39.56	4.15	35.41	4.15	35.41	8.30	31.26	8.30	31.26			7.40	32.16	7.45	32.11		
DMH 25678	38.52	7.95	30.57	7.90	30.62												
DMH 26034	40.10	6.80	33.30			8.35	31.75	8.25	31.85								
DMH A	49.66	5.65	44.01	5.15	44.51	6.05	43.61	6.05	43.61								
DMH B	24.14	6.10	18.04	6.10	18.04												
DMH C	42.21	6.65	35.56	6.65	35.56			6.60	35.61				</				