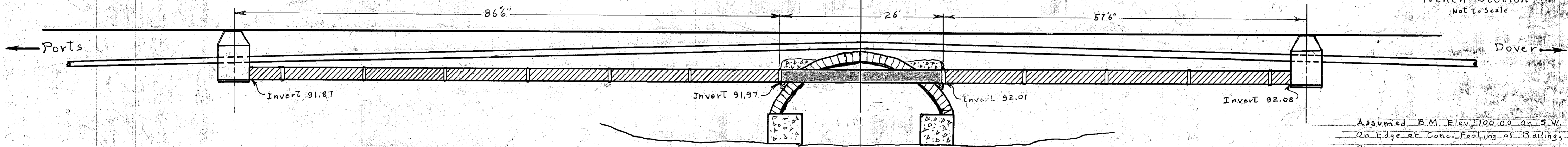
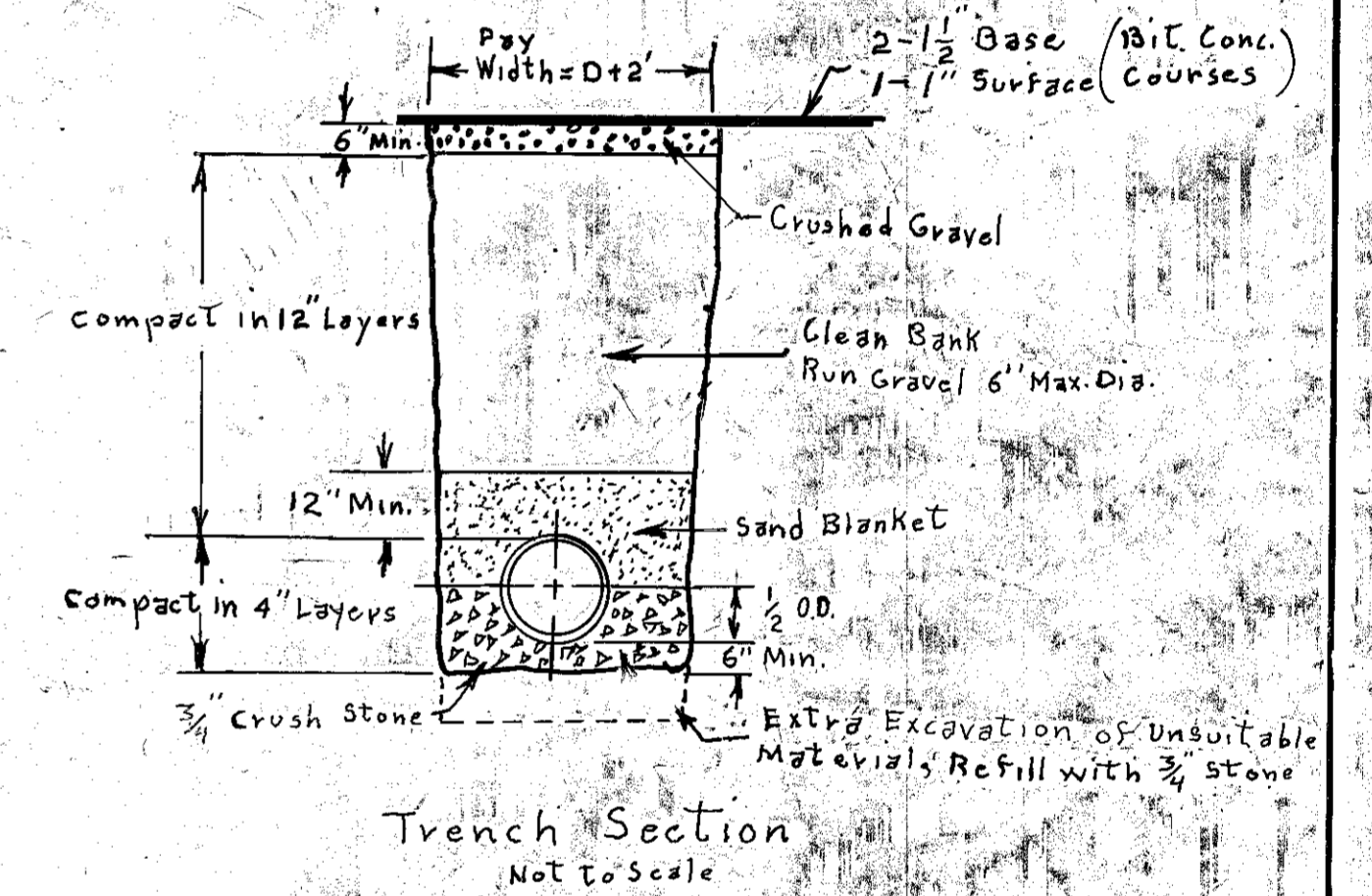
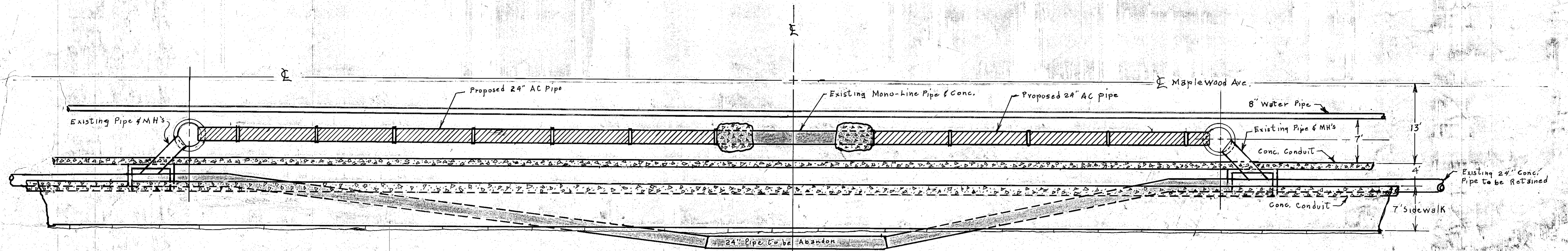
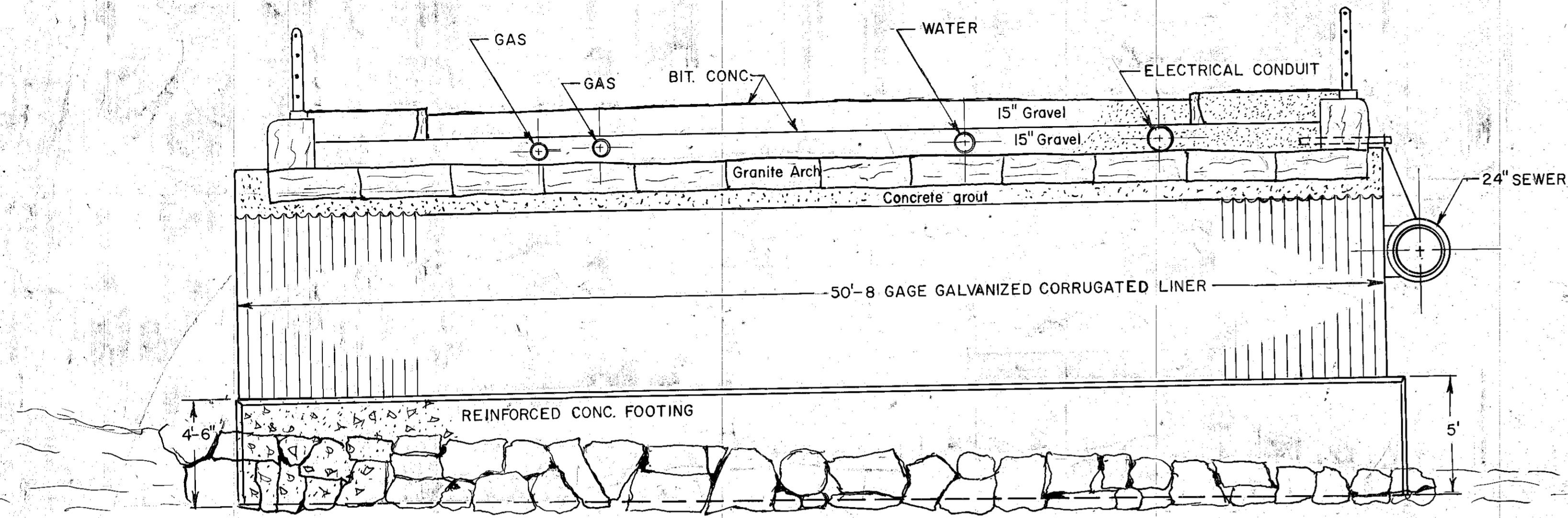


# MAPLEWOOD AVE. SEWER NORTH MILL POND

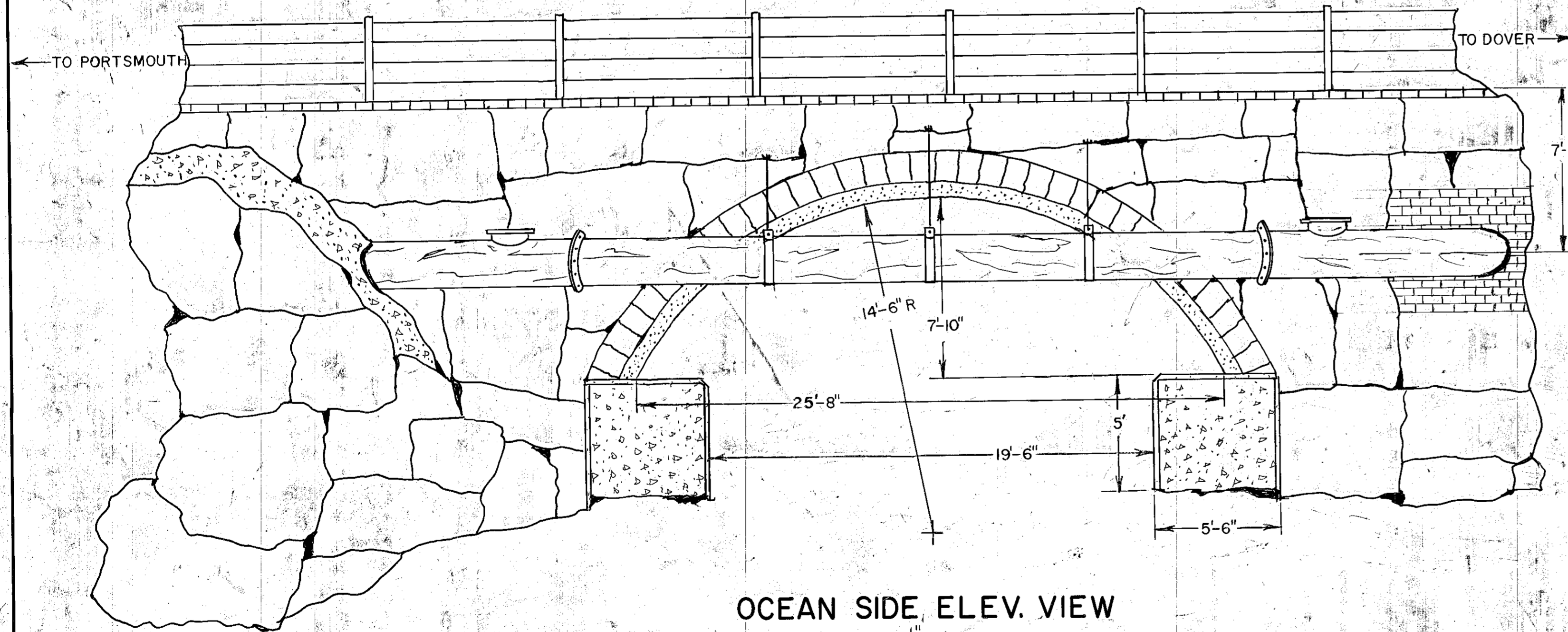
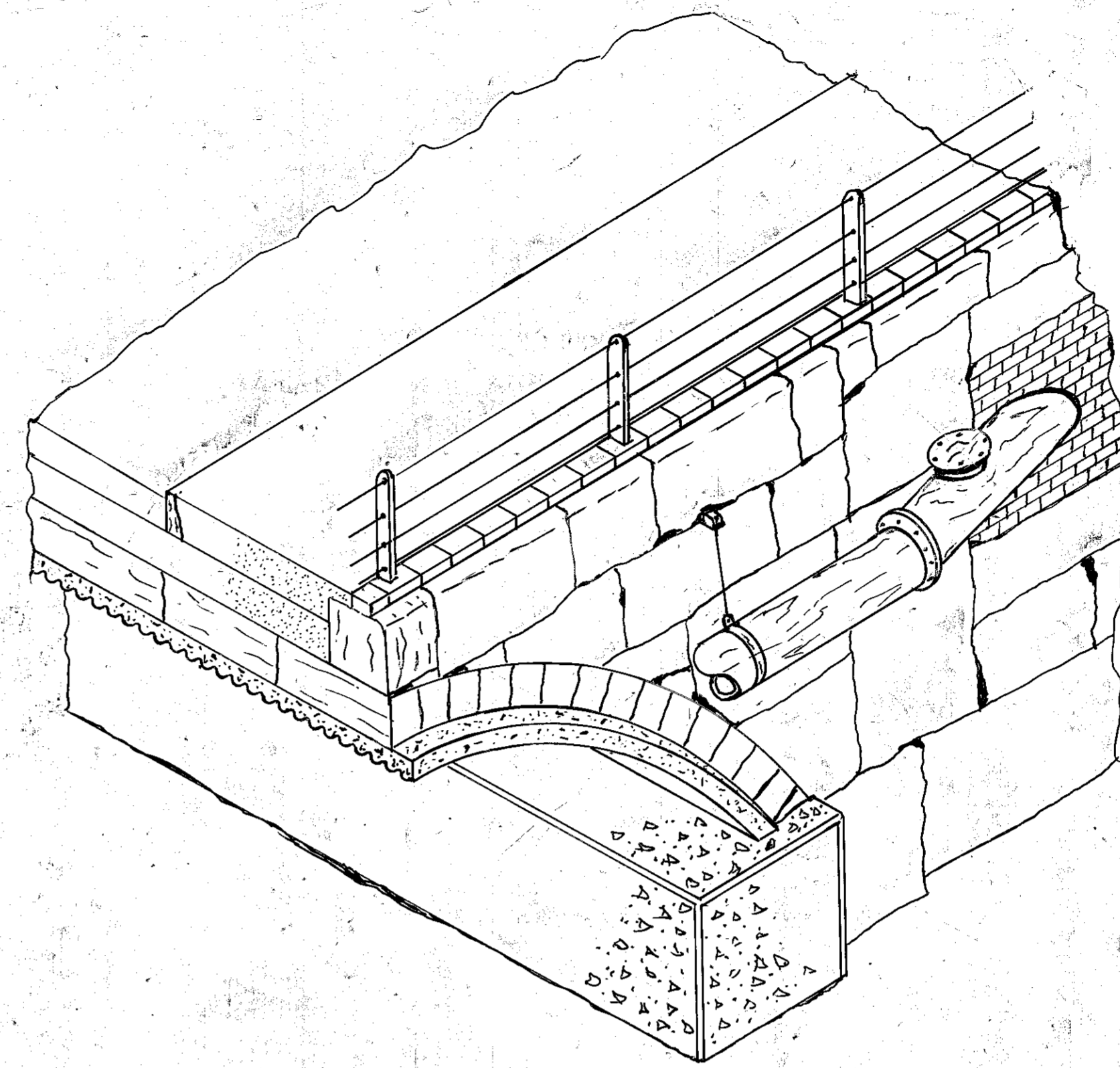


Assumed B.M. Elev. 100.00 on S.W. End of Bridge  
On Edge of Conc. Footing of Railing, Spot Painted  
Orange.

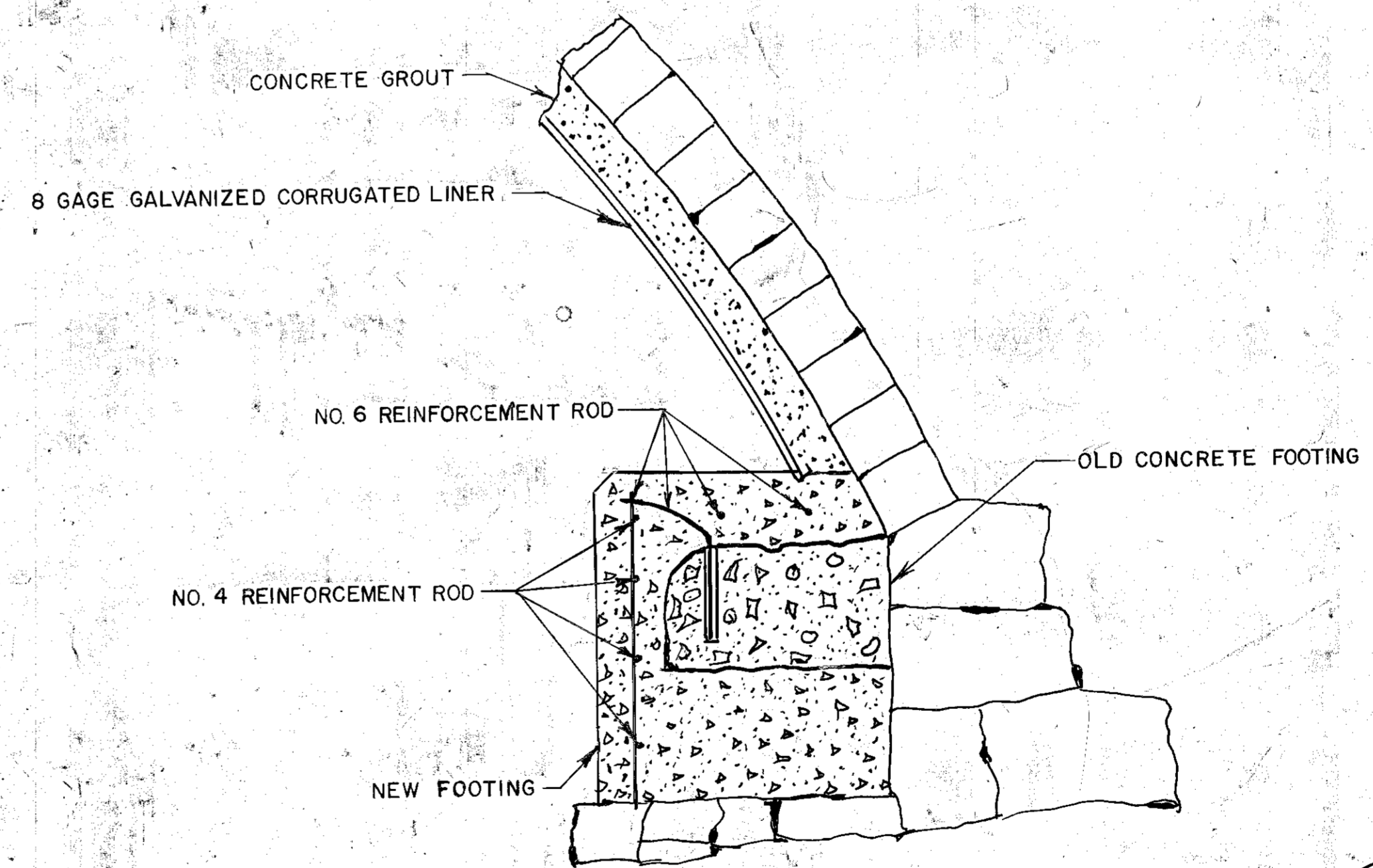
REVISIONS	
CITY OF PORTSMOUTH, N.H. PUBLIC WORKS DEPT.	
<b>NORTH MILL POND BRIDGE &amp; SEWER</b>	
DIVISION: Engineering	
SCALE: As Shown	DATE: 8-18-77
APP. BY	DR. BY C.E. Barber



SECTION VIEW  
 $\frac{1}{4}'' = 1'$



OCEAN SIDE ELEV. VIEW  
 $\frac{1}{4}'' = 1'$



DETAIL SECTION OF FOOTING  
 $\frac{1}{2}'' = 1'$

**RECORD  
 DRAWING**

DATE 3-11-76 R.E. Parker

North Mill Pond Bridge  
 and  
 Sewer Line

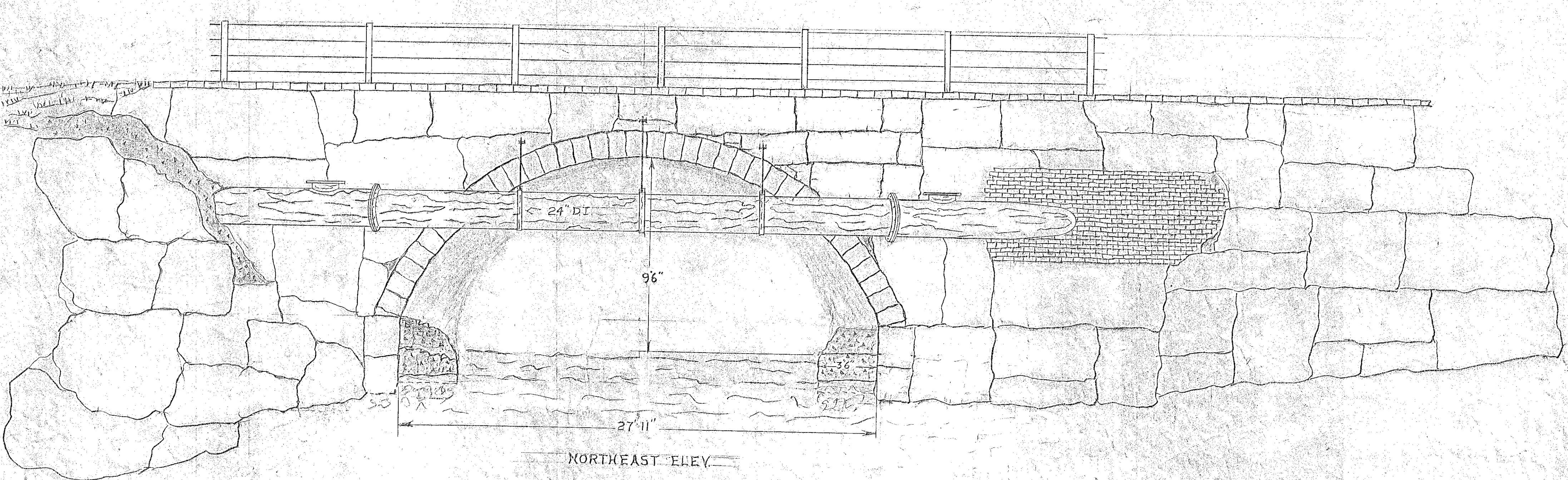
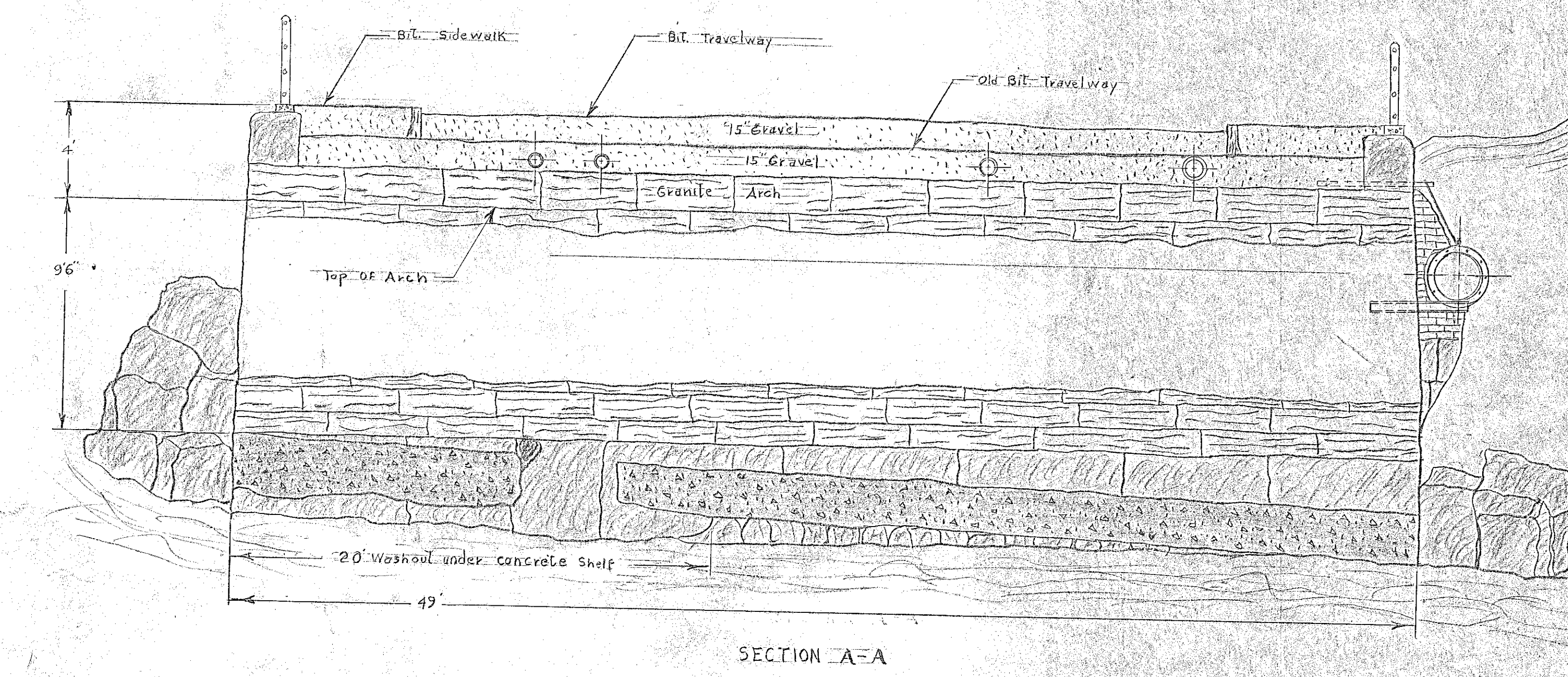
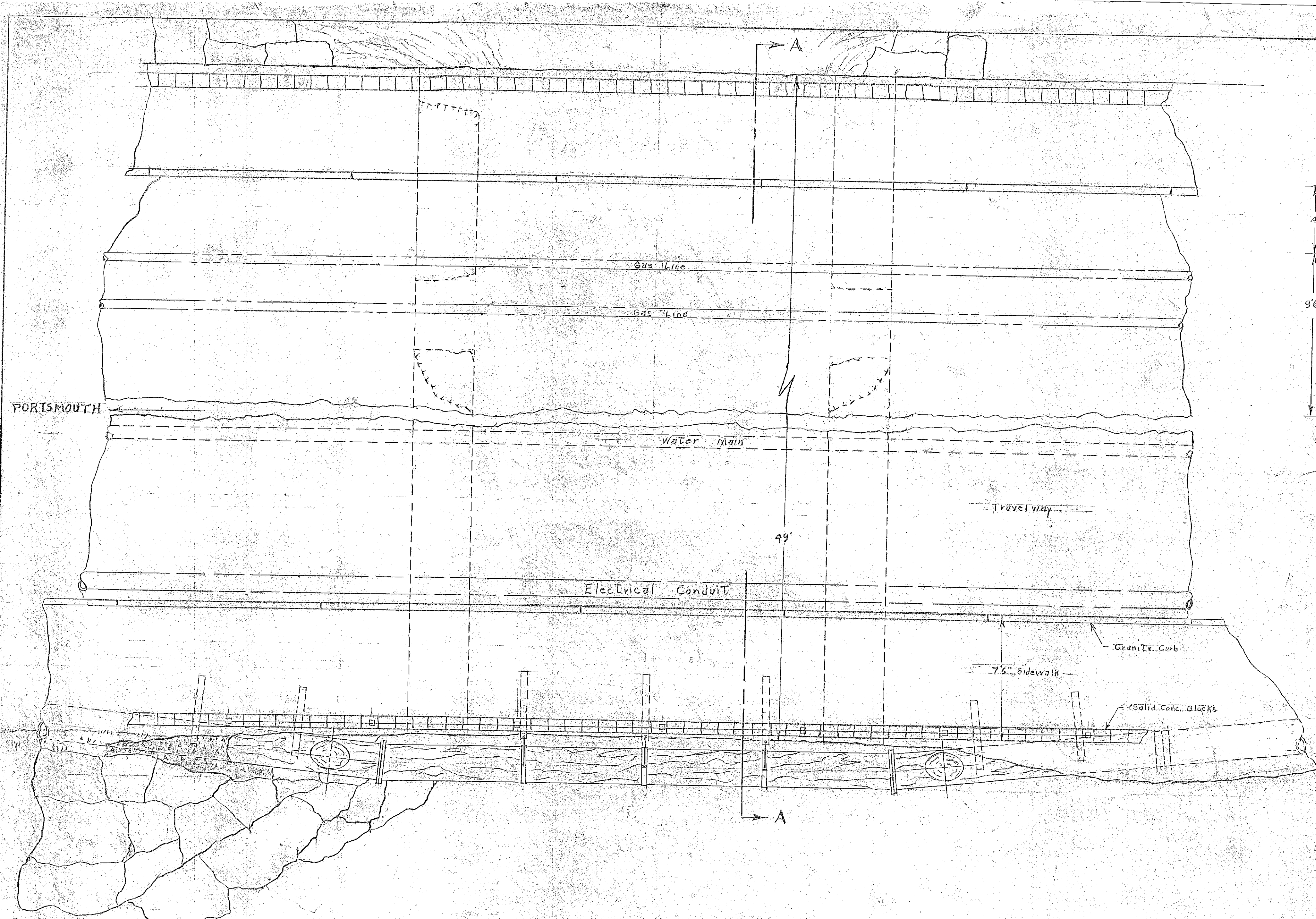
March 1976

PORTSMOUTH, N.H.  
 Engineering Division P.W.D.

Scale As Shown

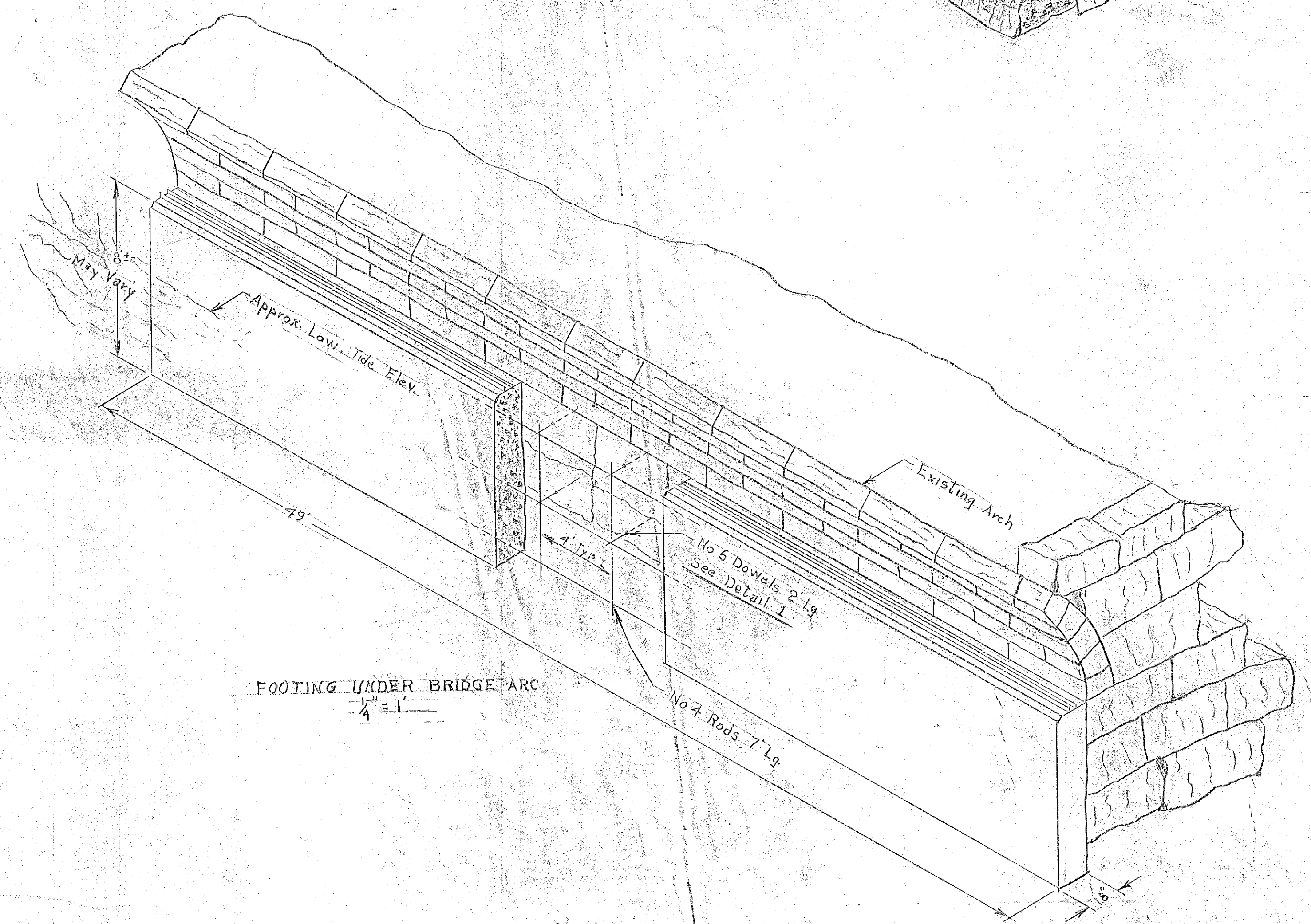
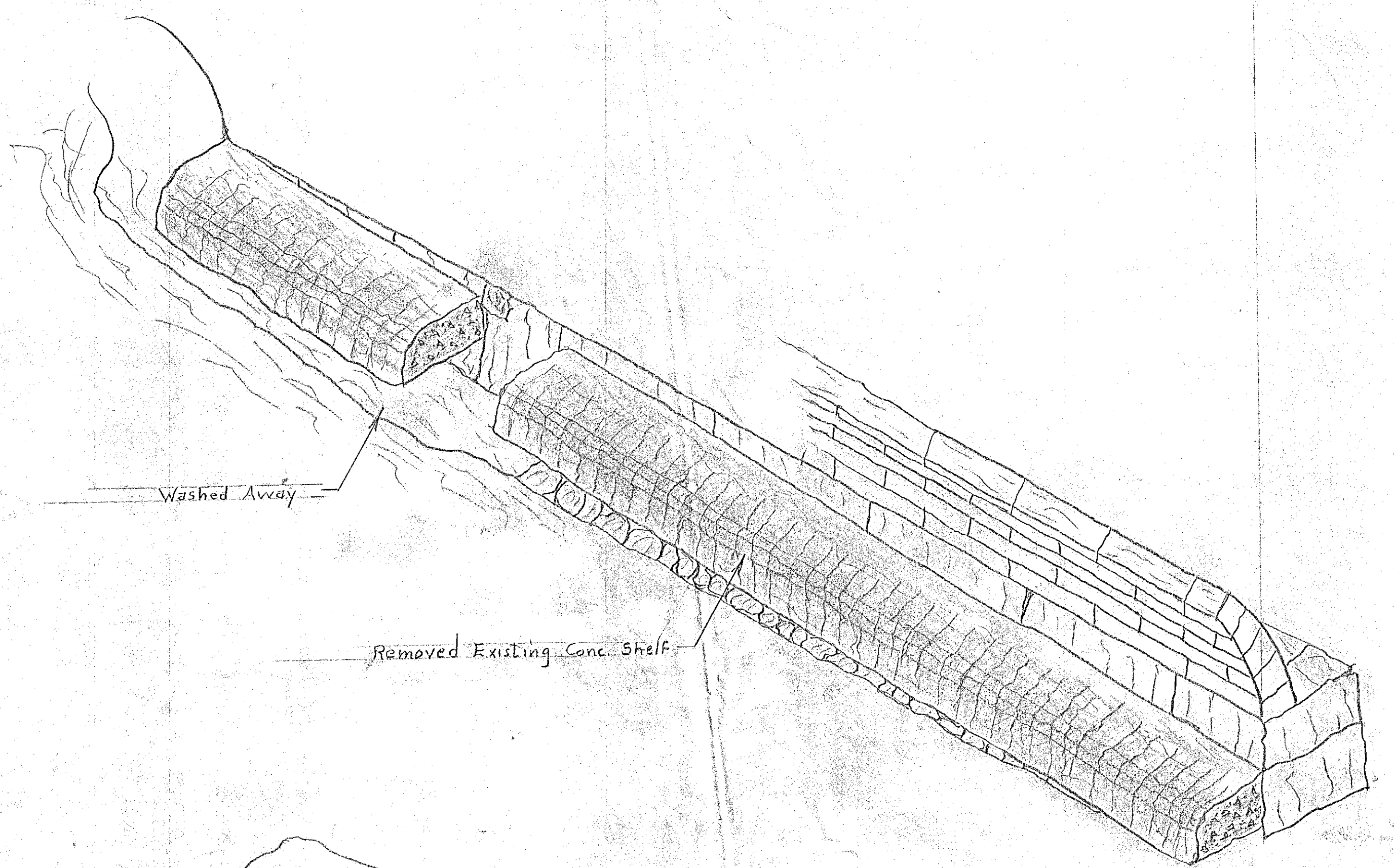


RECORD DRAWING

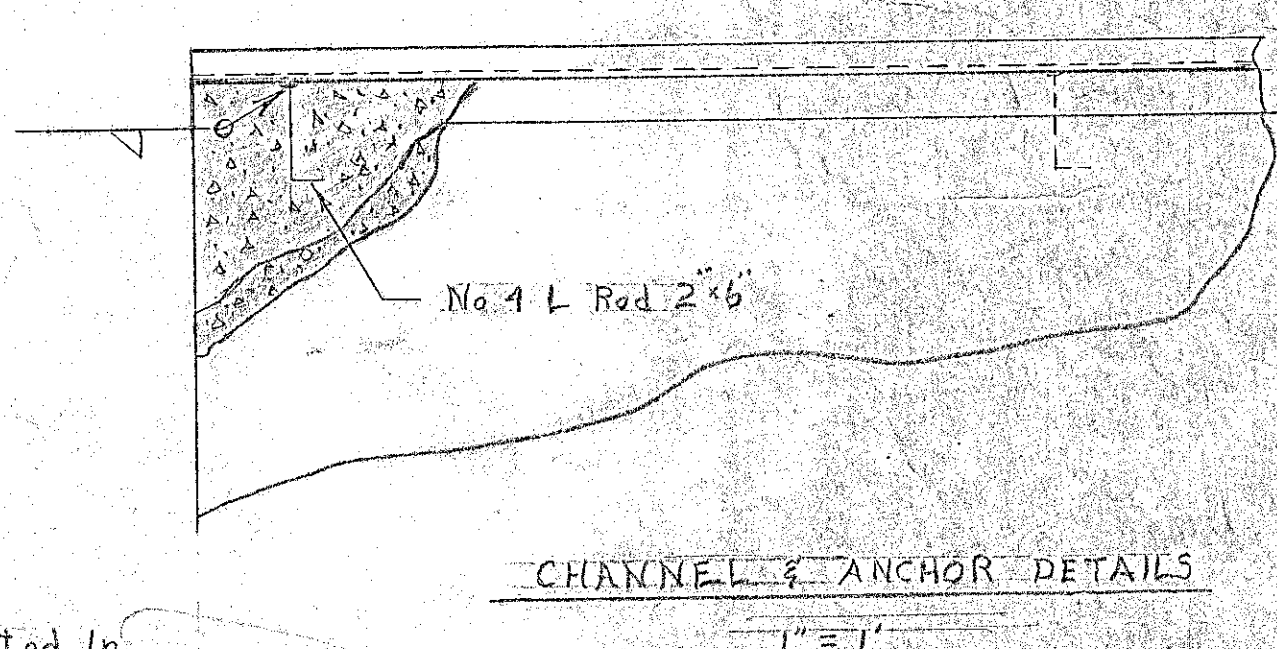
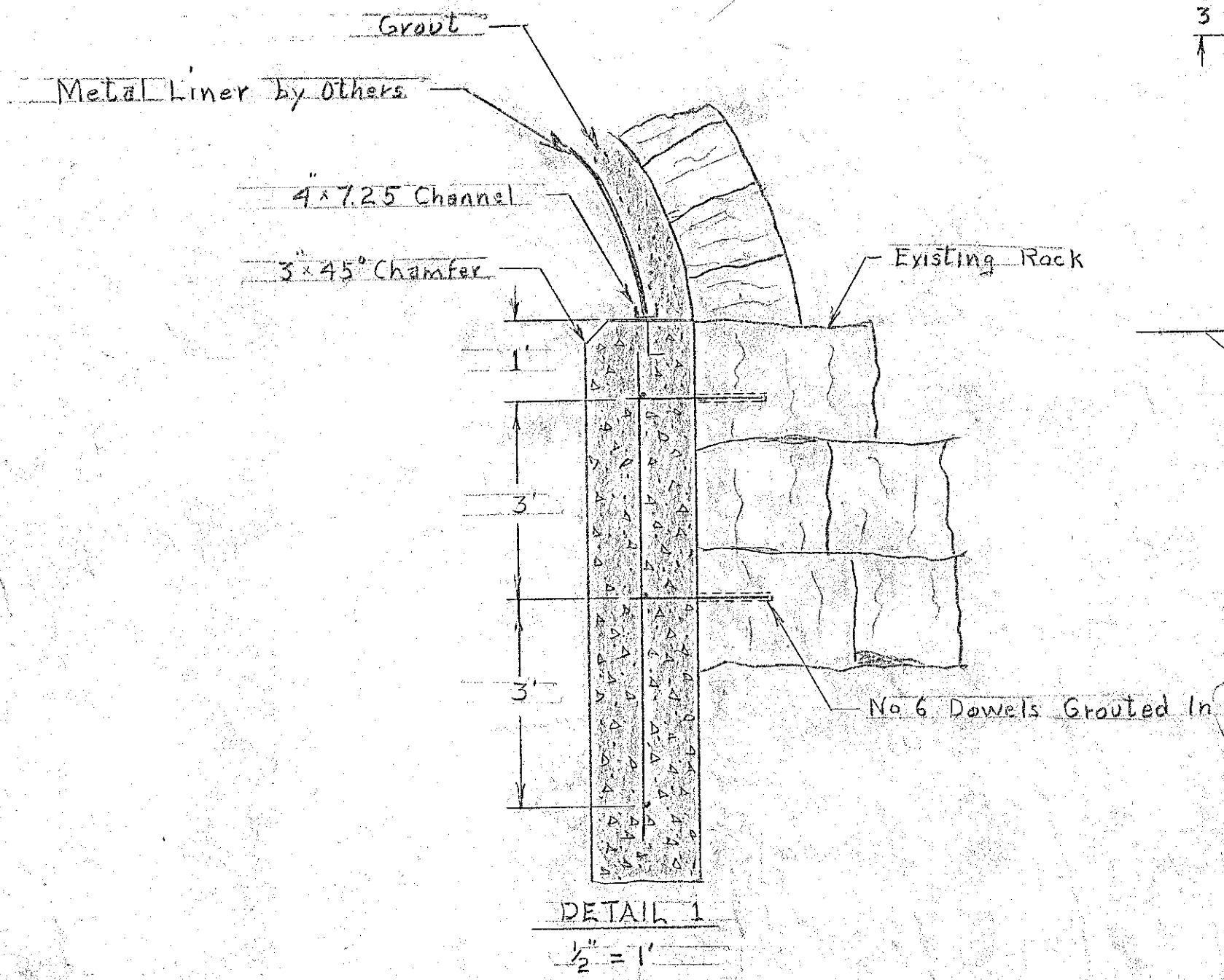
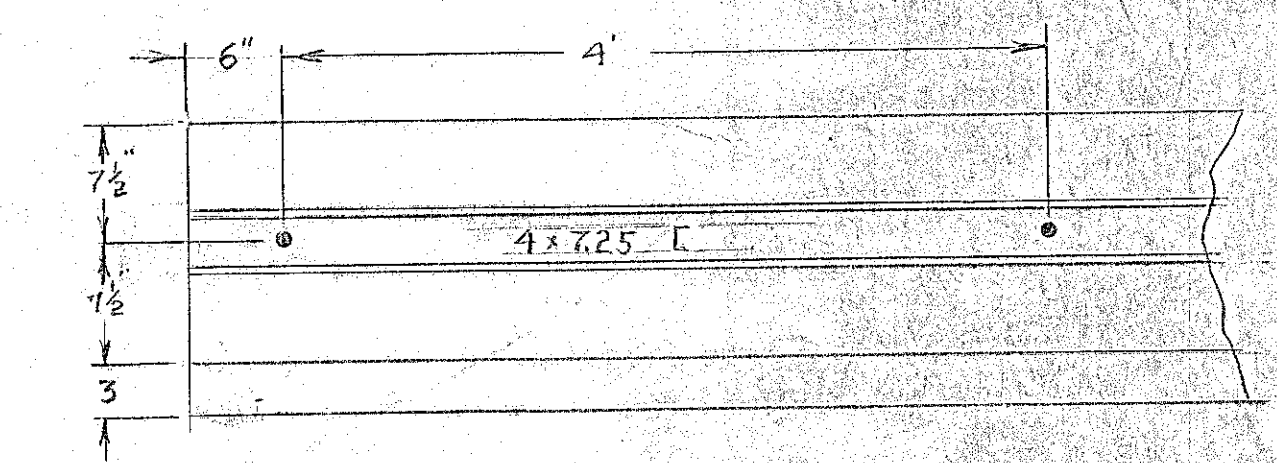


EXISTING  
 North Mill Pond Bridge  
 and  
 Sewer Line  
 June 8, 1915  
 PORTSMOUTH, N.H.  
 Engineers Division P.W.D.

Scale 1"=4'



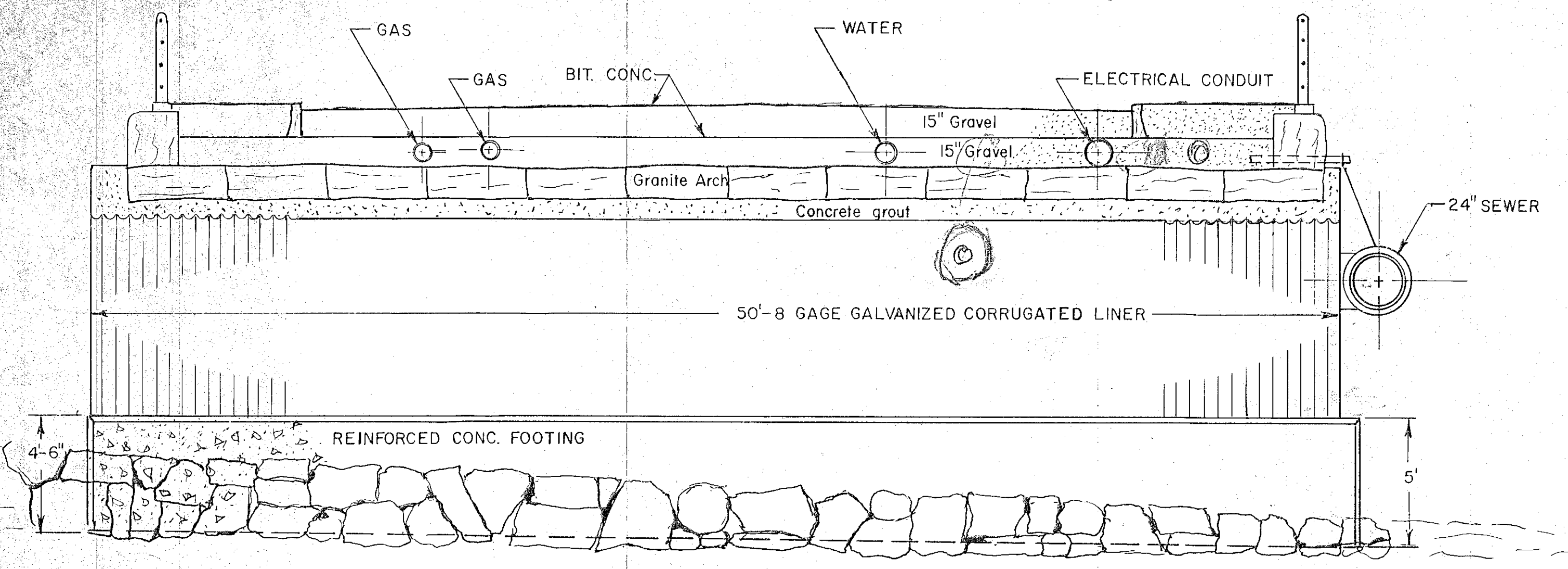
Note  
 1. Footing must be constructed on both sides of bridge for bearing for steel liner  
 2. These are preliminary plans subject to change



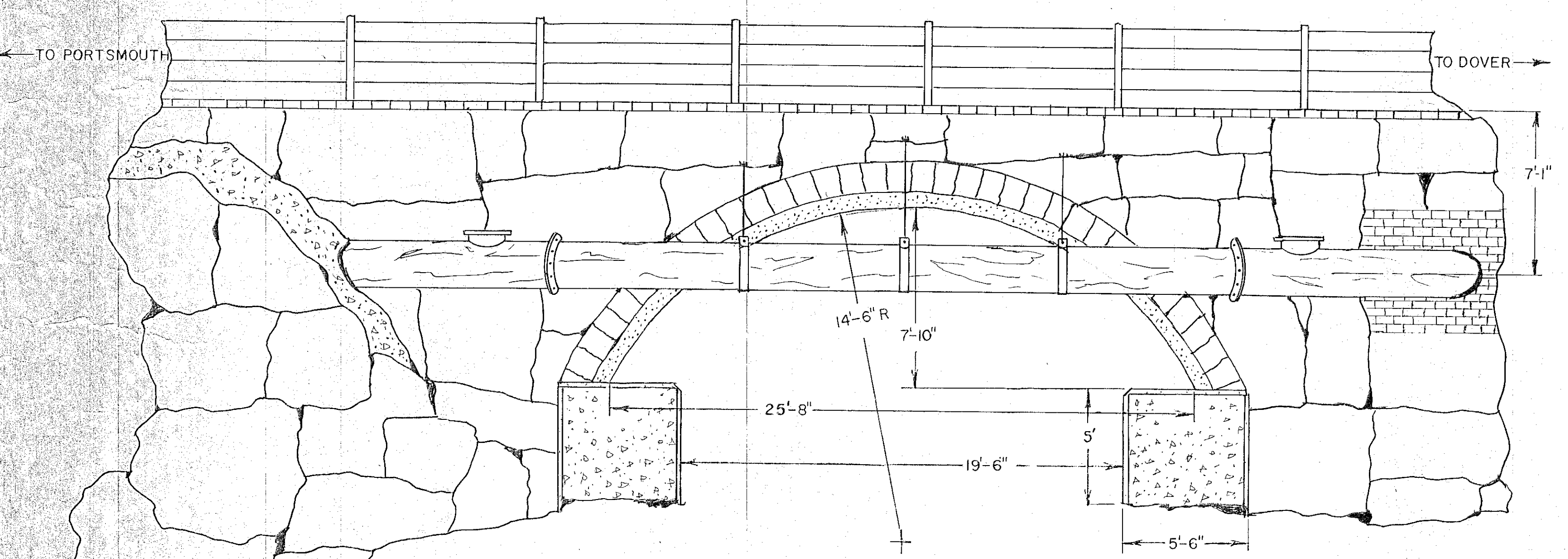
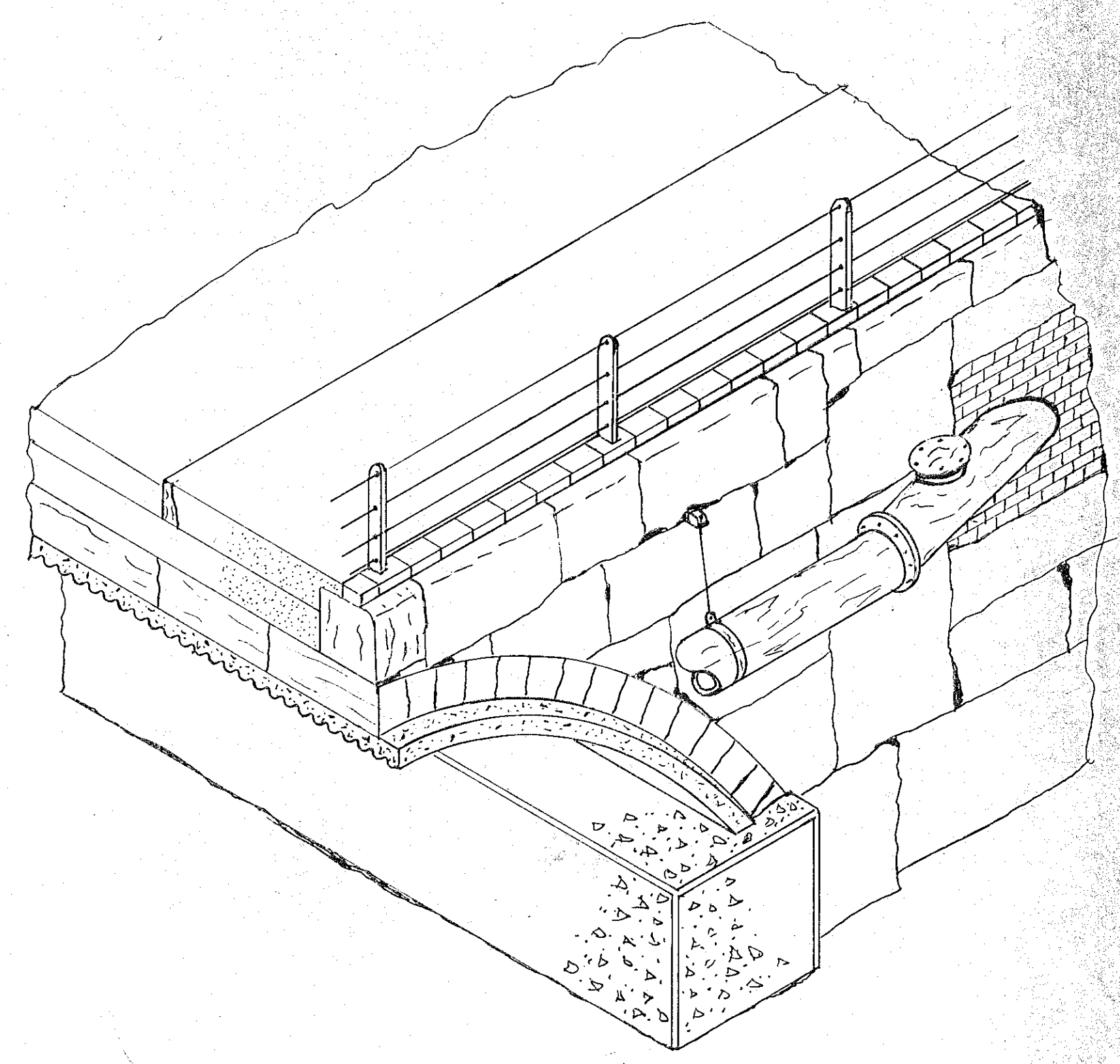
**NORTH MILL POND**  
 (Proposed)  
**BRIDGE FOOTING**

June 5, 1975 Scale: As Shown  
 PORTSMOUTH, N.H.  
 Engineers Division Public Works Dept.

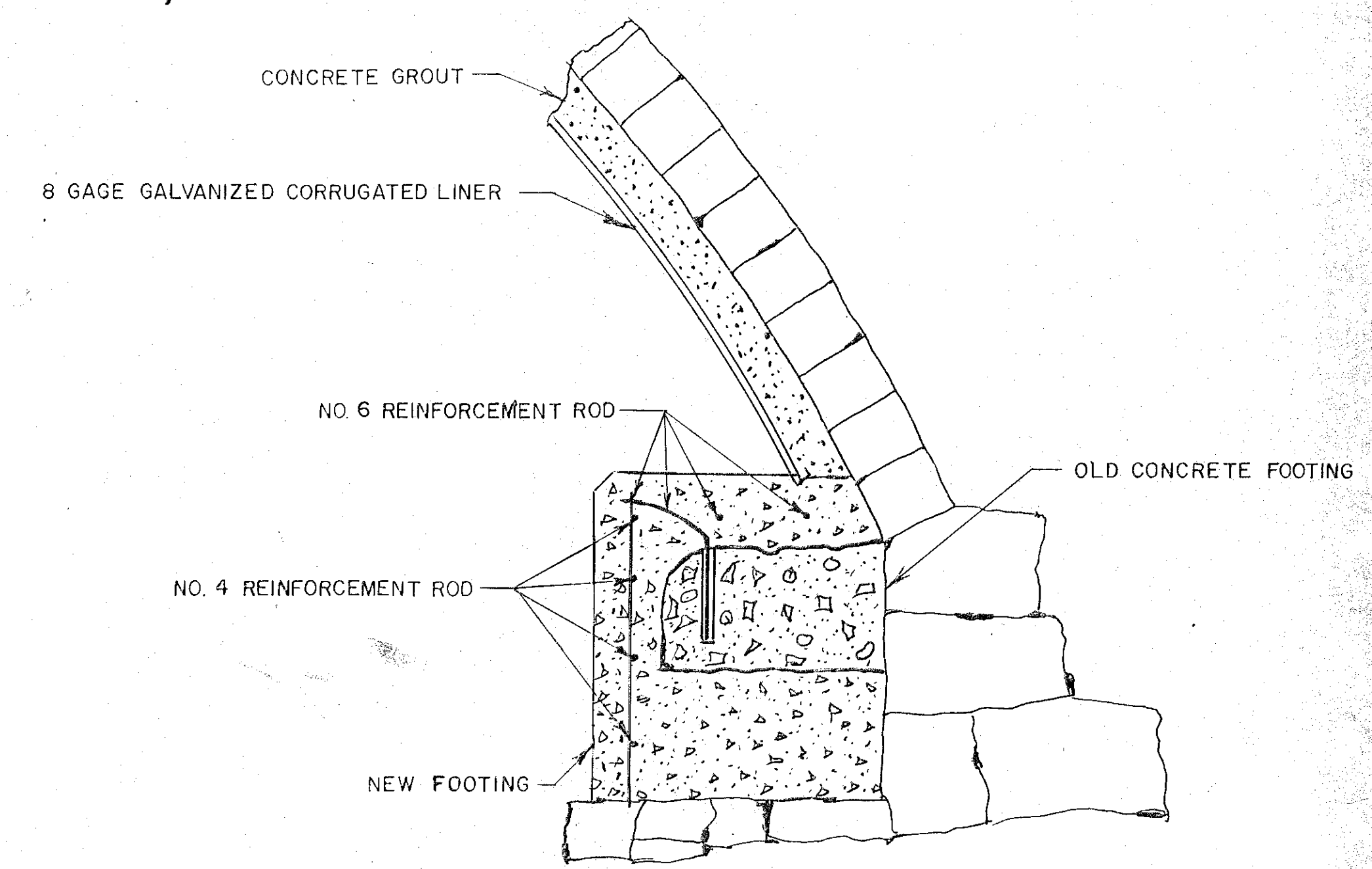
R.E.P.



SECTION VIEW  
 $\frac{1}{4}'' = 1'$



OCEAN SIDE ELEV. VIEW  
 $\frac{1}{4}'' = 1'$



DETAIL SECTION OF FOOTING  
 $\frac{1}{2}'' = 1'$

North Mill Pond Bridge  
 and  
 Sewer Line

March 1976  
 PORTSMOUTH, N.H.  
 Engineering Division - P.W.D.

Scale As Shown

