

ADDENDUM NUMBER 1:  
Portsmouth City Boiler Plant Improvements Project  
Bid Proposal #37-12

Issued: June 20, 2012

This Addendum forms part of the original document marked: **Plains Park Improvements Bid Proposal #37-12**

**A. Bidding Requirements:**

1. **Any questions regarding the bid package are due by Monday, June 25<sup>th</sup> at Noon.** Please direct all questions in writing via email to: [rsdolce@cityofportsmouth.com](mailto:rsdolce@cityofportsmouth.com)  
An addendum to address these questions, if necessary, will be distributed afterwards.
2. The perimeter temporary fencing depicted on SP-1 will not be required as part of this work. The contractor is responsible for a secure staging area on-site to prevent public access and theft of project equipment, materials, etc. The location to be approved by City representative.
3. Contractors are responsible for all necessary barricades, signage, or pedestrian & vehicular traffic control around building. Must be reviewed and approved by City representative.
4. All work will be done between 7:00a.m. and 5:00 p.m., Monday to Friday. Work outside of those hours must be requested in writing, and approved by the City, prior to start of after hours work.

**B. Bidder's Questions:**

**None at this time.**

**C. Bid Documents - The following items supplement or supersede the associated original sections:**

1. Drawing D-1, DETAILS SHEET 1, dated March 2012:
  - a. Revised depth of 2-1/4" Bituminous Concrete Binder Course in Parking Lot Paving (this supersedes the 1-3/4" depth originally specified on D-1).
2. Drawing LM-1, LAYOUT & MATERIALS PLAN, dated March 2012:
  - a. Extend new black vinyl-coated chain link fence an additional 50ft, to the East along Route 33. This will be in addition to the already 183ft+/- length of existing fence specified to be replaced on LM-1. New fencing is specified in Detail #8, on sheet D-4. New posts and footings for the additional 50ft to match existing.
3. Section 520 Portland Cement Concrete:
  - 2.04 AGGREGATES:
    - E. Concrete sidewalks shall be polyfiber reinforced, not weld wire mesh reinforced, with the exception of handicapped ramps.

2.10 CONCRETE SEALANTS:

- A. All exposed surfaces of concrete sidewalks will be sealed with an approved Silane-Siloxane coating. Contractor to provide cut sheets on product before installation for engineer's approval.

3.04 INSTALLATION/APPLICATION/ERECTION:

A. PLACING:

11. Handicapped sidewalk ramps shall be 6" thick, and have 6"x6" 10ga. welded wire mesh.
4. See Attached SECTION 661.16, 661.17 and 680 SITE FURNISHINGS document.
5. See Attached SECTION 02771 CURBING document.
6. See Attached SECTION 02625 CORRUGATED POLYETHYLENE [HDPE] DRAINAGE PIPE document.
7. Revised Drawing SP-1, DEMOLITION & SITE PREPARATION PLAN, dated June 18, 2012.
8. Revised Drawing D-6, DETAIL SHEET VI, dated June 18, 2012.

All else remains unchanged from original bid document.

Please see the attached Plains Park Improvements #37-12 Mandatory Pre-Bid Meeting Sign-in sheet.

Please acknowledge receipt of this addendum and attached documents within your proposal, failure to do so may subject a bidder to disqualification.

**End of Addendum #1**

## **Special Provision**

To Section 661 and 680 (NHDOT Standard Specifications)

**Amend** Section 661.16, 661.17 and 680 to include:

### **661.16, 661.17 and 680 SITE FURNISHINGS**

#### GENERAL

##### 1.01 RELATED DOCUMENTS

- A. The General Documents, as listed in the Table of Contents, and applicable parts of Division 1, General Requirements shall be included in and made a part of this Section.
- B. Examine all Drawings and all other Sections of the Specifications for requirements therein affecting the work of this trade.

##### 1.02 SCOPE OF WORK

- A. The work of this Section consist of all site improvements and related items as indicated on the Drawings and/or as specified herein and includes, but is not limited to, the following:
  - 1. Picnic Tables
  - 2. Bike Racks
  - 3. Aluminum Bleachers
  - 4. Trash & Recycling Receptacle

##### 1.03 EXAMINATION OF CONDITIONS

- A. The Contractor shall fully inform himself of existing conditions of the site before submitting his bid, and shall be fully responsible for carrying out all site work required to fully and properly execute the work of the Contract, regardless of the conditions encountered in the actual work. No claim for extra compensation or extension of time will be allowed on account of actual conditions inconsistent with those assumed.
- B. Plans, surveys, measurements and dimensions under which the work is to be performed are believed to be correct to the best of the Landscape Architect's knowledge, but the Contractor shall have examined them for himself during the bidding period, as no allowance will be made for any errors or inaccuracies that may be found therein.

##### 1.04 SCHEDULING

- A. The Contractor shall submit to the Landscape Architect, for approval by the Owner, a progress schedule for all work as specified herein.

## 1.05 QUALITY ASSURANCE

- A. Materials and methods of construction shall comply with the following standards:
  - 1. ASTM: American Society for Testing and Materials
  - 2. ANSI: American National Standards Institute
  - 3. FS: Federal Specifications
  - 4. IMI: International Masonry Institute
  - 5. PCA: Portland Cement Association
- B. Qualifications of Workers: Use adequate numbers of skilled workers who are trained in the necessary crafts and who are completely familiar with the specified requirements and methods needed for the proper performance of the work of this Section.
- C. Layout: After staking out the work, and before beginning final construction, obtain the Landscape Architect's approval for layout. Contractor shall make adjustments as determined by the Landscape Architect. Landscape Architect may make adjustments to layout as is required to meet existing and proposed conditions without additional cost to the contract price.

## 1.06 SUBMITTALS

- A. Shop Drawings: Submit shop drawings in accordance with Division 1 requirements.
  - 1. Picnic Tables
  - 2. Bike Racks
  - 3. Aluminum Bleachers
  - 4. Trash & Recycling Receptacle
- B. Product Information: Provide manufacturer's data showing installation and limitations in use. Supply Certificates of Compliance for all materials required for fabrication and installation, certifying that each material item complies with, or exceeds, specific requirements. Work includes but is not limited to:
  - 1. Picnic Tables
  - 2. Bike Racks
  - 3. Park Signage
  - 4. Aluminum Bleachers
  - 5. Trash & Recycling Receptacle

## PART 2 - PRODUCTS

### 2.01 PICNIC TABLES

- A. Picnic tables shall be Arbor Table model by [www.timberform.com](http://www.timberform.com). Two (2) of Model No. 2244-6 and one (1) of Model No. 2243-6 or approved equal to be installed in concrete footings embedded / direct bury. Surface mounting will not be accepted.

## 2.02 BIKE RACKS

- A. The bike racks shall be “Cycle Sentry” series by Secure Site Design, LLC ([www.securesitedesign.com](http://www.securesitedesign.com)) Model No. BRWS-101, or approved equal to be installed in concrete footings embedded/direct bury. Surface mounting will not be accepted. Receptacles shall be powder coated in standard color to be selected by Owner.

## 2.03 BLEACHERS

- A. Bleachers shall be GT Grandstands by UltraPlay of Plant City, Florida or approved equal. New bleachers shall provide at least as much seating capacity as existing bleachers in both locations. Bleachers shall be commercial grade and fabricated out of aluminum with side picket guard rails. Bleachers shall be installed on site to ensure adjacent HC seating on pavement.

## 2.04 TRASH & RECYCLING RECEPTACLES

- A. Trash and recycling receptacles shall be TR-22 Custom Multi-Cycle with Rain Shield by Fair Weather SF in Port Orchard, WA or approved equal. Receptacles shall be powder coated in standard color to be selected by Owner.

## 2.05 TREE GRATES

- A. Tree grates shall be Model 4848 Sunrise as made by Ironsmith in Palm Desert, CA or approved equal. Grates shall be 48” x 48” in two sections. ½” maximum slot opening for ADA compliance. Cast from 100% recycled iron, aluminum or bronze. Finish shall be unfinished cast gray iron. Grates shall have ¼” thick grinding pads for leveling.

# PART 3 - EXECUTION

## 3.01 INSTALLATION

- A. The installer shall examine previous work, related work, and conditions under which this work is to be performed and notify the Contractor in writing of all deficiencies and conditions detrimental to the proper completion of this work. Beginning work means installer accepts substrates, subgrades, previous work, and conditions.

## 3.02 SITE FURNISHINGS

- A. Install each site furnishing in accordance with the Drawings and the manufacturer’s instructions.

- A. The Contractor shall be responsible for timing the delivery of site furnishings so as to minimize on-site storage time prior to installation. All stored materials must be protected from weather, careless handling and vandalism.
- B. Installation Tolerances: Install bicycle racks to comply with the following maximum tolerances:
- a. Location: Plus or minus 1/2 inch.
  - b. Height: Plus or minus 1/4 inch.
  - c. Alignment of Adjacent Units: Plus or minus 1/2 inch in ten feet; 1 inch over total length.
  - d. Plumb: Plus or minus 1/4 inch.
  - e. Level: Plus or minus 1/4 inch.

- - - END OF SECTION - -

## SECTION 02771

### CURBING

#### PART 1 - GENERAL

##### 1.01 WORK INCLUDED:

- A. This section covers furnishing and installation of granite curb, bituminous concrete curb and precast parking curb, where required, as shown on the Drawings and herein specified.
- B. This section also covers replacement of curbing removed during construction.

##### 1.02 RELATED WORK:

- A. Required earthwork is specified under Section 02300, EARTHWORK.
- B. Section 02745, PAVING.
- C. Section 02775, SIDEWALK REPLACEMENT.

##### 1.03 REFERENCES:

The following standards form a part of these specifications, as referenced:

New Hampshire Department of Transportation, Standard Specifications for Road and Bridge Construction

##### 1.04 SUBMITTALS: IN ACCORDANCE WITH REQUIREMENTS OF GENERAL SPECIFICATIONS, SUBMIT THE FOLLOWING:

Six sets of shop drawings, showing dimensions of typical curb sections, shall be submitted to the Engineer for review.

#### PART 2 - PRODUCTS

##### 2.01 GRANITE CURBING:

- A. Granite curbing shall conform to Subsection 609.2.3 of the latest edition of the NHDOT Standard Specifications for Road and Bridge Construction.
- B. Special shapes and corners shall be supplied as required.

2.02 GRANITE EDGING:

- A. Granite edging shall conform to Subsection 609.2.3 of the latest edition of the NHDOT Standard Specifications for Road and Bridge Construction.
- B. Special shapes and corners shall be supplied as required.

2.03 BITUMINOUS CONCRETE CURB:

- A. Bituminous concrete curb shall meet the requirements of Section 609.2.4 of the latest edition of the NHDOT Standard Specifications for Road and Bridge Construction.

2.04 PRECAST PARKING LOT CURB:

- A. Precast parking lot curb shall be formed with concrete rated at 3500 psi at 28 days.
- B. The manufacturer shall maintain at the manufacturing site a record of material used and their sources, and a copy of concrete mix designs.
- C. Precast parking lot curb shall be the Standard Precast Bumper Curb as manufactured by Durastone Co., Lincoln, RI, or approved equal.

PART 3 - EXECUTION

3.01 GRANITE CURBING:

- A. Removal and resetting and/or removal and replacing of granite curbing shall be in accordance with Section 609 of the latest edition of the NHDOT Standard Specifications for Road and Bridge Construction and all amendments thereto. The curbing shall have a 7-inch reveal unless otherwise directed by the Engineer.
- B. Except as modified herein or on the drawings, installation of curbing shall conform to Section 609 of the NHDOT Standard Specifications for Road and Bridge Construction.
- C. Excavation shall be made to the bottom of the 6-inch gravel base below the curbing, the trench being sufficiently wide to permit thorough tamping. The base shall be compacted to a firm, even surface and shall be approved by the Engineer.
- D. The curbing shall be set on edge and settled into place with a heavy wooden hand-rammer, to the line and grade required, straight and true for the full depth. The joints of the stone curbing shall be pointed with mortar for the full depth of the curbing. At approximately 50-foot intervals, a 1/2-inch joint shall not be filled with mortar but left free for expansion. The ends of the stone curbing at driveways and intersections shall be cut at a bevel or rounded as directed by the Engineer.
- E. The trench for the stone curbing shall be backfilled with approved material; the first layer to be 4 inches in depth, thoroughly rammed; the other layers to be more than 6 inches in depth and thoroughly rammed until the trench is filled.



- F. Where indicated on the plans, or as directed, drainage openings shall be made through the curbing at the elevations and of the size required.

3.02 GRANITE EDGING:

- A. Except as modified herein and on the drawings, installation of granite edging shall conform to Section 609 of NHDOT Standard Specifications for Road and Bridge Construction.
- B. The cement concrete base shall be placed on a well-tamped sub-base acceptable to the Engineer, and shall be constructed of 3000-psi concrete, minimum, as shown on the drawings.
- C. The edging shall be set to the proper lines and grades on the concrete base and on a well-tamped sloping gravel surface.

3.03 BITUMINOUS CONCRETE CURB:

- A. Replacement of bituminous concrete curbs shall be in accordance with Section 500 of the latest edition of the Standard Specification for Road and Bridge Construction of the Department of Public Works of the State of New Hampshire and all amendments thereto. The curbing shall have a 6-inch reveal unless otherwise directed by the Engineer.
- B. Unless modified herein, installation shall conform to Section 609 of the NHDOT Standard Specifications for Road and Bridge Construction.
- C. When indicated on the plans, or as directed, drainage openings shall be made through the curb at the elevations and of the size required.

3.04 PRECAST PARKING LOT CURBING:

- A. Precast parking lot curbing shall be furnished and installed as indicated on the drawings.
- B. Any units which are cracked, chipped, spalled, or otherwise damaged shall be removed and replaced with units meeting the specified requirements.

END OF SECTION

## SECTION 02625

### *CORRUGATED POLYETHYLENE [HDPE] DRAINAGE PIPE*

#### PART 1 – GENERAL

##### 1.01 WORK INCLUDED:

- A. This section includes furnishing all materials, labor and equipment and installing corrugated polyethylene [HDPE] drainage pipe and fittings as shown on the drawings and as specified herein.

##### 1.02 RELATED WORK:

- A. Section 02300 – EARTHWORK
- B. Section 02252 – SUPPORT OF EXCAVATION

##### 1.03 REFERENCES:

- A. The following standards form a part of this specification, as referenced:

American Society for Testing and Materials (ASTM)

ASTM D2321            Standard for Underground Installation of Thermoplastic Pipe for Sewers and Other Gravity Flow Applications

ASTM F405            Standard Specification for Corrugated Polyethylene Pipe and Fittings

ASTM F667            Standard Specification for Large Diameter Corrugated Polyethylene Pipe and fittings

American Association Of State Highway and Transportation Officials

AASHTO M294        Standard Specification for Corrugated Polyethylene Pipe

AASHTO MP6         Standard Specification for Corrugated Polyethylene Pipe 42” and 48” Diameter

##### 1.04 SUBMITTALS: IN ACCORDANCE WITH REQUIREMENTS OF GENERAL SPECIFICATIONS, SUBMIT THE FOLLOWING:

- A. Six sets of manufacturer’s literature on the materials of this Section shall be submitted to the Engineer for review.
- B. Manufacturer’s certification that the product was manufactured, tested, and supplied in accordance with this specification shall be furnished.

## 1.05 DELIVERY, STORAGE AND HANDLING

- A. Pipe shall be packaged to withstand shipment without damage and handled carefully on the jobsite. Pipe shall be stored so that it is not exposed to sunlight.

## PART 2 – PRODUCTS:

### 2.01 MATERIALS:

- A. This Section applies to corrugated polyethylene pipe with an integrally formed smooth interior.
- B. The nominal size for the pipe and fittings is based on the nominal inside diameter of the pipe.
- C. The pipe and fittings shall be free of foreign inclusions and visible defects. Fittings may be either molded or fabricated. Fittings supplied by manufacturers other than the supplier of the pipe shall not be permitted without the approval of the Engineer. The ends of the pipe shall be cut squarely and cleanly so as not to adversely affect joining.

### 2.02 MANUFACTURERS:

- A. Pipe and fittings shall be manufactured by Ipex, Inc.; Plexco, Division of Chevron Chemical Co.; J-M Pipe Co.; Advanced Drainage Systems, Inc. (ADS) or approved equal.

## PART 3 – EXECUTION

### 3.01 INSTALLATION:

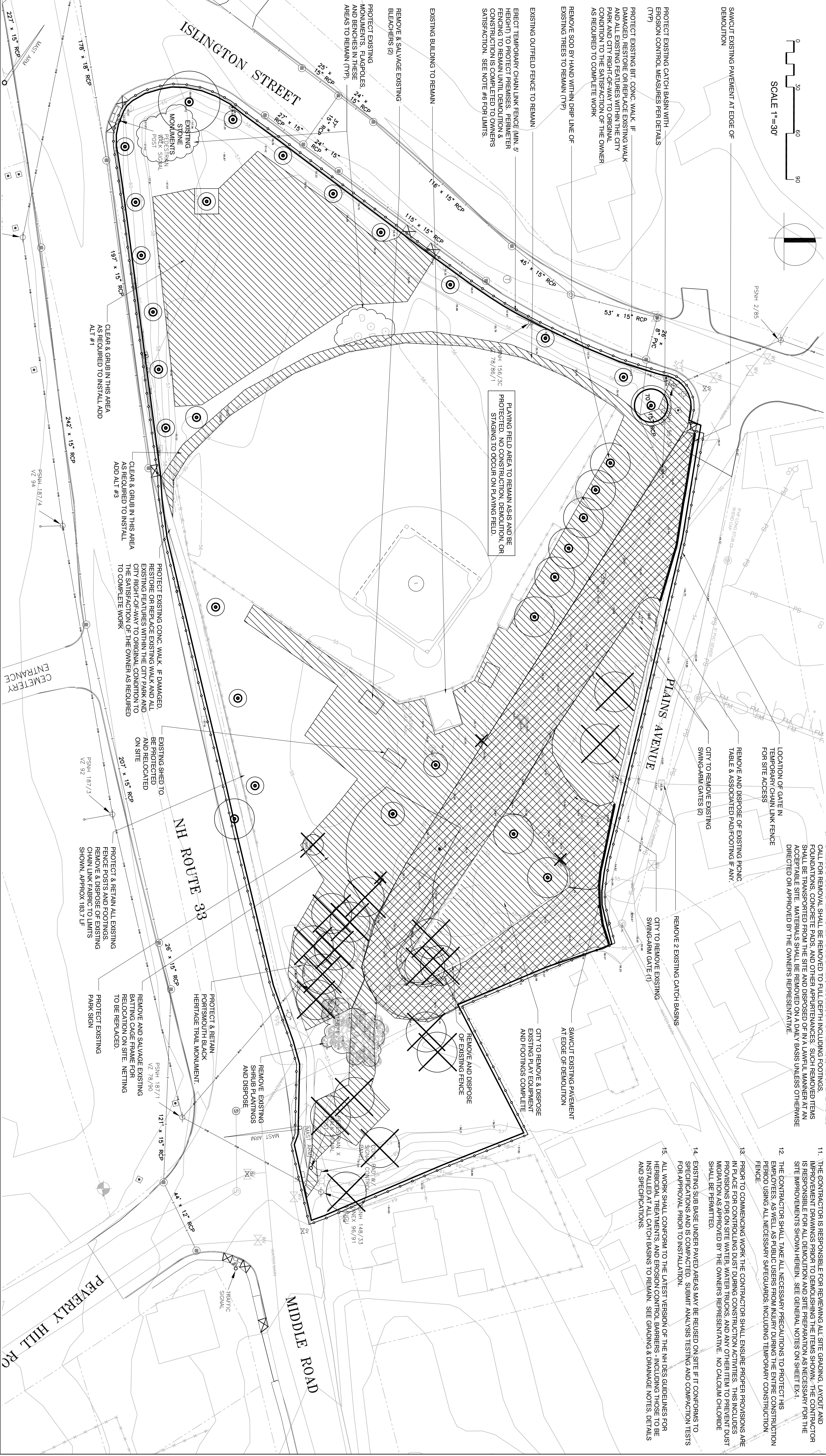
- A. Pipe interiors, fitting interiors, and joint surfaces shall be thoroughly cleaned before installation. Pipes and fittings shall be maintained clean.
- B. Pipes shall be installed in the locations and to the required lines and grades shown on the drawings and provided in these Specifications, using an approved method of control.
- C. Excavations shall be maintained free of water during the progress of the Work. No pipes shall be laid in water, nor shall there be any joints made up in water.
- D. If any defective pipe is discovered after being placed, removal and replacement with sound pipe will be required at no additional cost to the Owner.

END OF SECTION



**LEGEND**

- TREE TO BE REMOVED
- TREE TO PROTECT & REMAIN
- LIMIT OF WORK
- TEMPORARY CHAIN LINK FENCING
- REMOVE EXISTING PAVEMENT
- CLEAR & GRUB
- SAWCUT LINE
- UTILITY POLE TO BE RELOCATED/REMOVED COMPLETE (INCLUDING ALL FOOTINGS & SUPPORT WIRES/POLES)
- SEE UP-1 FOR RELOCATION - 4 TOTAL FOR RELOCATION/REMOVAL



**SHEET NOTES**

1. THIS EXISTING CONDITIONS PLAN IS BASED OFF OF SURVEYS AND CONSTRUCTION PLANS PROVIDED BY ALTUS ENGINEERING, INC (SEWER PLAN & PROFILE FOR 1808 ISLINGTON STREET) AND AMBIT ENGINEERING, INC (ROUTE 33 IMPROVEMENTS) AND WESTON & SAMPTON CONSULTING AND ELECTRIC CONSULTING FOR MAJOR UTILITIES AND SURVEYS BY OTHERS. ADDITIONAL LAYOUTS FROM GIS DATA PROVIDED BY THE CITY OF PORTSMOUTH.
2. THE CONTRACTOR SHALL PROTECT EXISTING TREES TO REMAIN. CONTRACTOR SHALL INSTALL TREE PROTECTION FENCE TO DRIP LINE AFTER CLEARING UNDERBRUSH BY HAND OR WITH AIR SPADE. TAKING DUE CARE TO PREVENT INJURY TO TREES DURING CLEARING OPERATIONS. PROTECTIVE FENCE SHALL BE MAINTAINED IN PLACE TO THE SATISFACTION OF THE OWNER OR OWNERS REPRESENTATIVE. SEE SPECIFICATIONS REGARDING EXCAVATING AROUND EXISTING TREES.
3. CLEAN & PROTECT ALL CATCH BASINS WITH EROSION CONTROL MEASURES WITHIN THE LIMIT OF WORK PER DETAILS.
4. ALL EXISTING LIGHT FIXTURES, HYDRANTS, UTILITIES, TRAFFIC POLES & SIGNS, MONUMENTS, FENCING, ETC. WITHIN LIMIT OF WORK ARE TO REMAIN UNLESS NOTED OTHERWISE. IF ANY DAMAGE TO THESE ELEMENTS OCCURS IN THE COURSE OF DEMOLITION OR CONSTRUCTION, IT WILL BE THE RESPONSIBILITY OF THE CONTRACTOR TO REPAIR OR RESTORE THEM TO THE SATISFACTION OF THE OWNER (CITY OF PORTSMOUTH) AS REQUIRED TO COMPLETE WORK.
5. UNLESS SPECIFICALLY NOTED TO BE SAVED, REUSED, OR OTHERWISE, ALL SITE FEATURES CALL FOR REMOVAL SHALL BE REMOVED TO FULL DEPTH INCLUDING FOOTINGS, FOUNDATIONS, CONCRETE PADS, AND OTHER APPURTENANCES. SUCH REMOVED ITEMS SHALL BE TRANSPORTED FROM THE SITE AND DISPOSED OF IN A LAWFUL MANNER AT AN ACCEPTABLE SITE. MATERIALS SHALL BE REMOVED ON A DAILY BASIS UNLESS OTHERWISE DIRECTED OR APPROVED BY THE OWNERS REPRESENTATIVE.
6. LOCKED, SECURE, 5'-0" HEIGHT CONSTRUCTION FENCE IS MANDATORY AROUND LIMITS OF DISTURBANCE IN ACCORDANCE WITH FINAL SCOPE OF WORK AS IT RELATES TO ALTERANCES. SPECIFICALLY IF ALT #1 IS NOT SELECTED, FENCING IS NOT REQUIRED AROUND THAT AREA.
7. TREES DESIGNATED FOR REMOVAL SHALL BE TAGGED BY OWNERS REPRESENTATIVE PRIOR TO COMMENCEMENT OF CONSTRUCTION. TREES SHALL BE REMOVED AND STUMPS GROUND TO 24" BELOW GRADE.
8. THE CONTRACTOR SHALL SAWCUT ALL EXISTING PAVEMENTS PRIOR TO REMOVAL AND DISPOSAL OF ADJACENT PAVEMENTS MARKED FOR REMOVAL.
9. THE STORAGE OF CONSTRUCTION MATERIALS AND EQUIPMENT MAY BE PERMITTED BY THE CITY WITHIN THE CURBSIDE OF CITY OF PORTSMOUTH PROPERTY AT LOCATIONS IDENTIFIED ON THE DRAWINGS. THE CONTRACTOR SHALL BE RESPONSIBLE FOR THE PROTECTION OF MATERIALS AND/OR EQUIPMENT STORED ON SITE CANNOT BE GUARANTEED AND SHALL BE THE SOLE RESPONSIBILITY OF THE CONTRACTOR.
10. CLEAR AND GRUB VEGETATION TO THE EXTENT REQUIRED TO IMPLEMENT ALL IMPROVEMENTS. CLEAR AND GRUB VEGETATION INDICATED ON PLAN SHALL INCLUDE REMOVAL OF SHRUBS AND UNDERBRUSH, REMOVAL OF ROOTS, ROUGH GRADING, INSTALLATION OF LOAM, FINE GRADING, SEEDING AND TURF ESTABLISHMENT BY THE CONTRACTOR, WHEN CLEARING AND GRUBBING IS TO OCCUR UNDER TREES IT MUST BE COMPLETED BY HAND OR AIR SPADE.
11. THE CONTRACTOR IS RESPONSIBLE FOR REVENING ALL SITE GRADING, LAYOUT AND IMPROVEMENT DRAWINGS PRIOR TO DEMOLISHING THE ITEMS SHOWN. THE CONTRACTOR IS RESPONSIBLE FOR ALL DEMOLITION AND SITE PREPARATION AS NECESSARY FOR THE SITE IMPROVEMENTS SHOWN HEREIN. SEE GENERAL NOTES ON SHEET EX-1.
12. THE CONTRACTOR SHALL TAKE ALL NECESSARY PRECAUTIONS TO PROTECT HIS EMPLOYEES, AS WELL AS PUBLIC USERS FROM INJURY DURING THE ENTIRE CONSTRUCTION PERIOD USING ALL NECESSARY SAFEGUARDS, INCLUDING TEMPORARY CONSTRUCTION FENCE.
13. PRIOR TO COMMENCING WORK, THE CONTRACTOR SHALL ENSURE PROPER PROVISIONS ARE IN PLACE FOR CONTROLLING DUST DURING CONSTRUCTION ACTIVITIES. THIS INCLUDES PROVISIONS FOR ON SITE WATER TRUCKS, AND ANY OTHER ITEM TO PREVENT DUST MIGRATION AS APPROVED BY THE OWNERS REPRESENTATIVE. NO CALCIUM CHLORIDE SHALL BE PERMITTED.
14. EXISTING SUB BASE UNDER PAVED AREAS MAY BE REUSED ON SITE IF IT CONFORMS TO SPECIFICATIONS AND IS COMPACTED. SUBMIT ANALYSIS TESTING AND COMPACTION TESTS FOR APPROVAL PRIOR TO INSTALLATION.
15. ALL WORK SHALL CONFORM TO THE LATEST VERSION OF THE NH DES GUIDELINES FOR HERBICIDAL TREATMENTS, AND EROSION CONTROL BARRIERS - INCLUDING THOSE TO BE INSTALLED AT ALL CATCH BASINS TO REMAIN. SEE GRADING & DRAINAGE NOTES, DETAILS AND SPECIFICATIONS.

Project:  
**CITY OF PORTSMOUTH**  
  
**Portsmouth Plains Park**  
 Portsmouth, NH

**Weston & Sampson**  
 100 Memorial Drive Portsmouth, NH 03801  
 Phone: (603) 431-5837  
 Fax: (603) 431-5837  
 www.westonsampson.com

Consultants:

| Rev | Date | Description |
|-----|------|-------------|
|     |      |             |
|     |      |             |
|     |      |             |

100% SUBMITTAL REVISION  
 JUNE 2012

Date: 6/20/12  
 Scale: AS SHOWN  
 Drawn By: DSM  
 Reviewed By: MSM  
 Checked By: CFR  
 Approved By: CFR

Drawing Title:  
**DEMOLITION & SITE PREPARATION PLAN**

Sheet Number:  
**SP-1**  
 Sheet 3 of 14



Consultants:

Revisions:

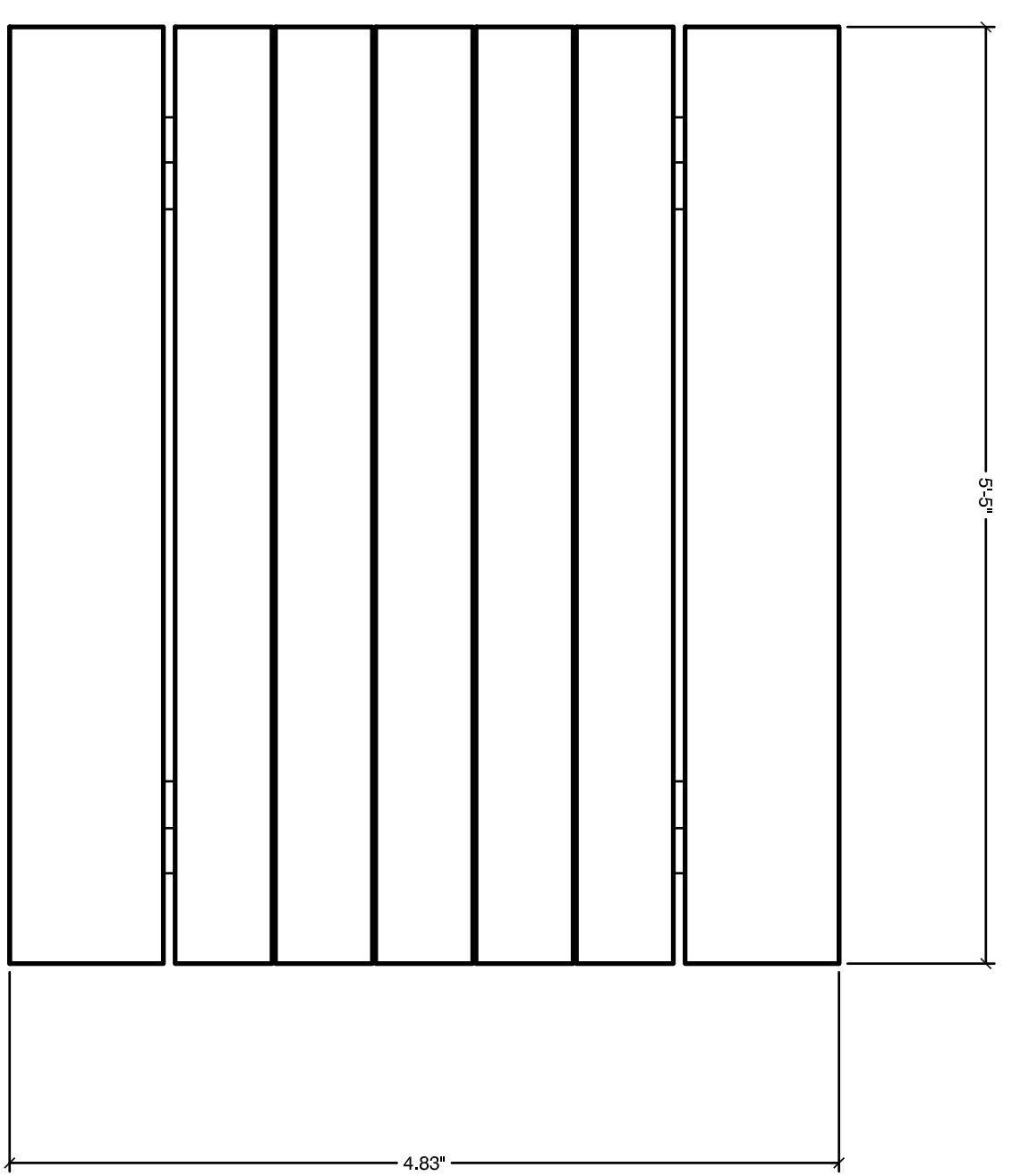
| Rev | Date | Description |
|-----|------|-------------|
|     |      |             |
|     |      |             |
|     |      |             |
|     |      |             |
|     |      |             |

Scale:

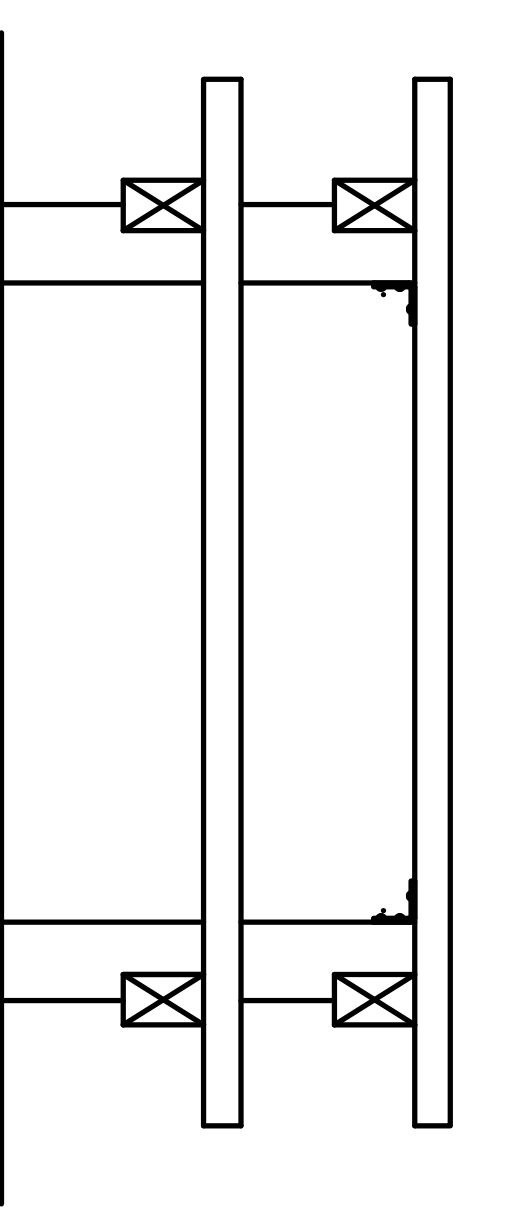
**100% SUBMITTAL REVISION**  
**JUNE 2012**

Date: 6/20/12  
Scale: AS SHOWN  
Drawn By: DSM  
Reviewed By: MSM  
Checked By: CFR  
Approved By: CFR

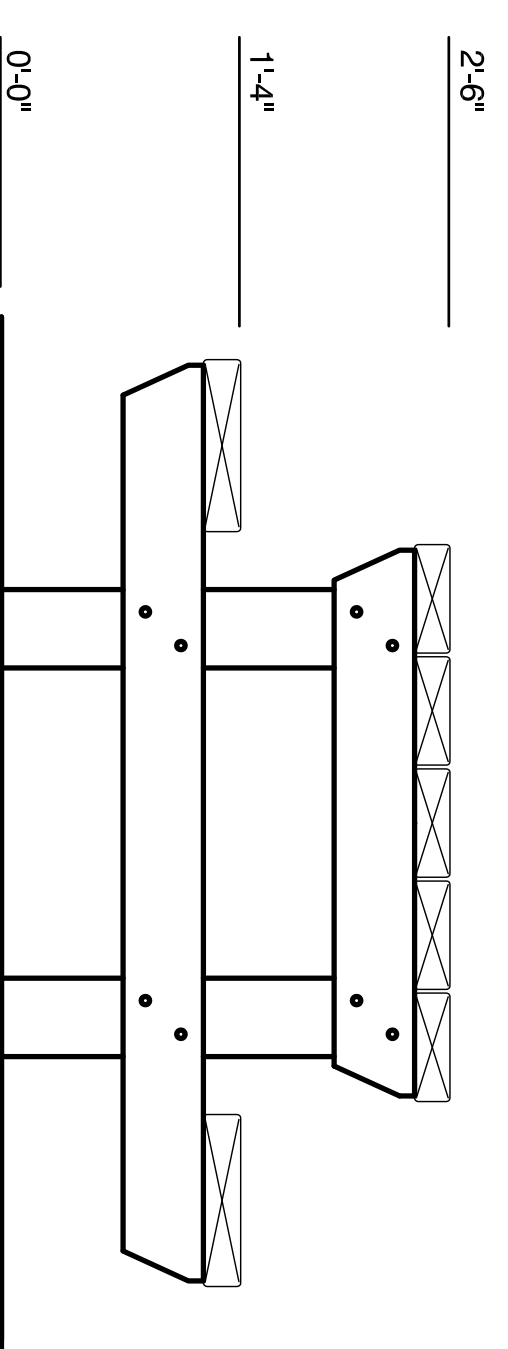
Drawing Title:  
**DETAILS SHEET VI**



TOP VIEW

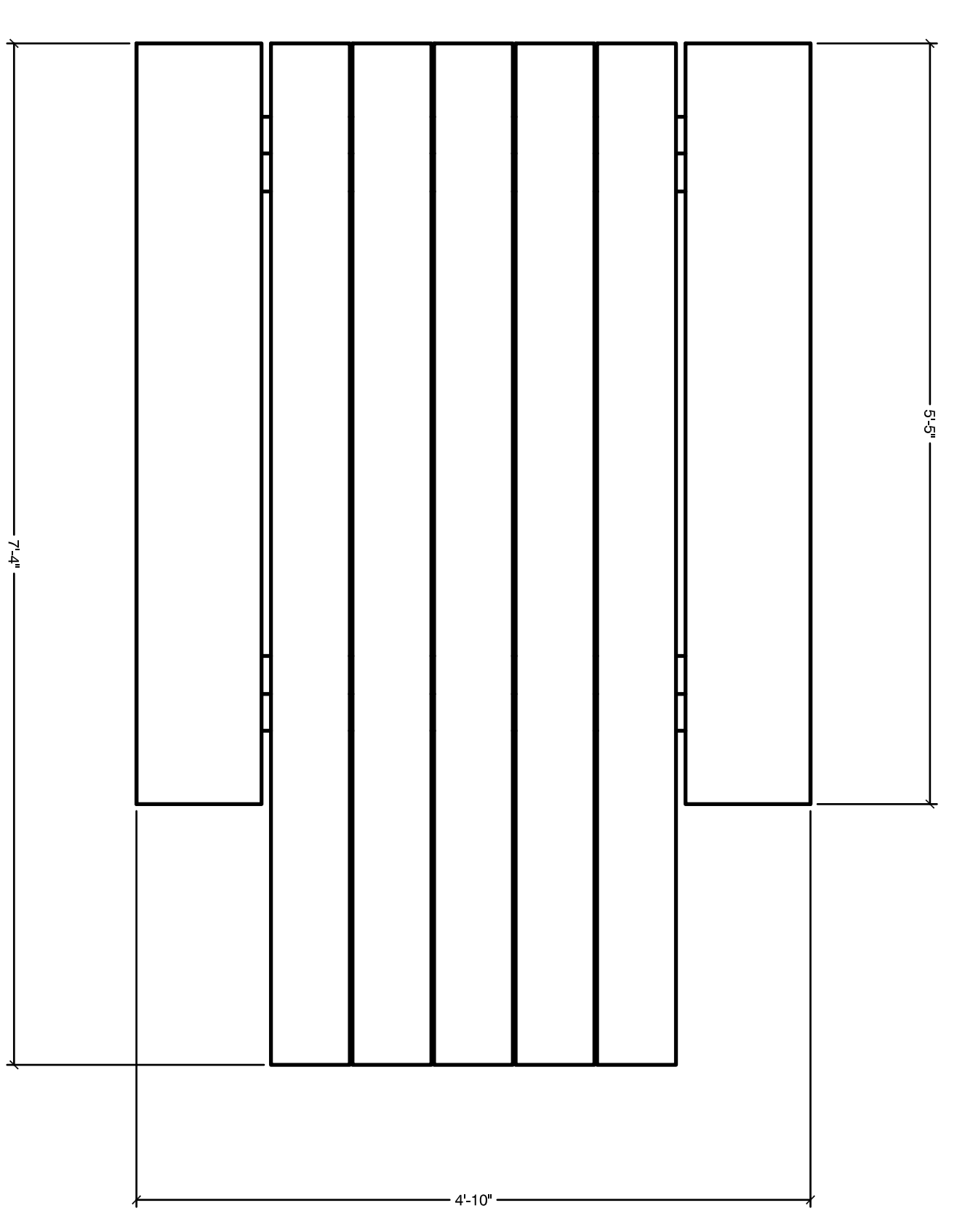


FRONT VIEW

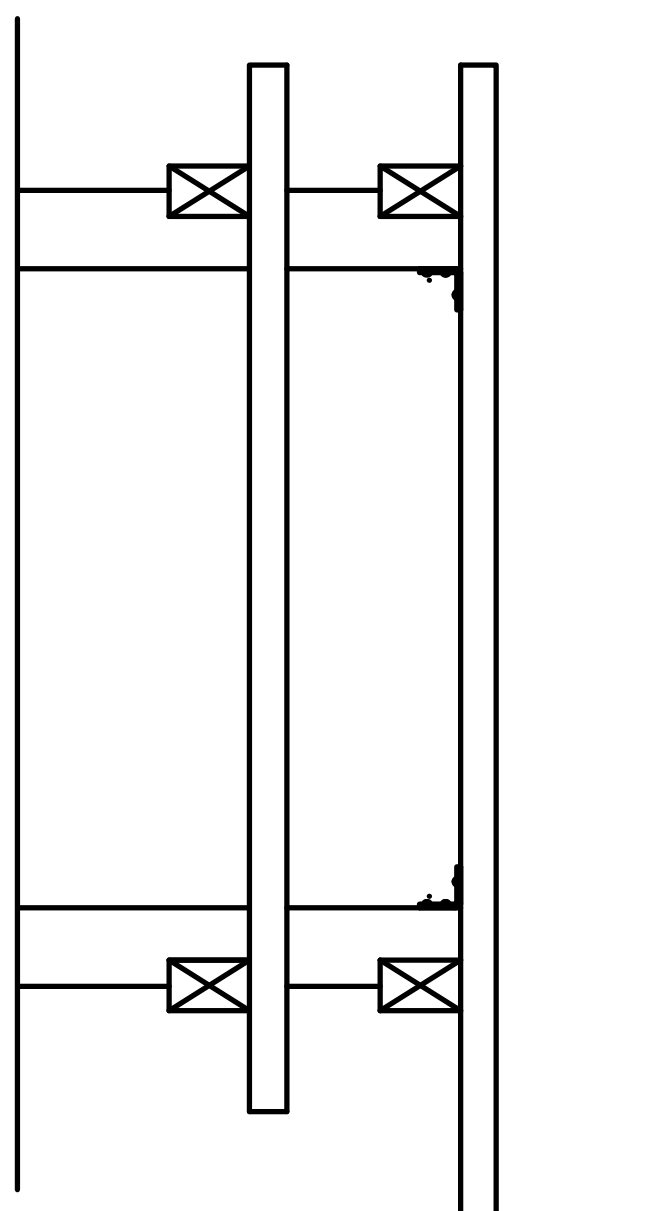


END VIEW

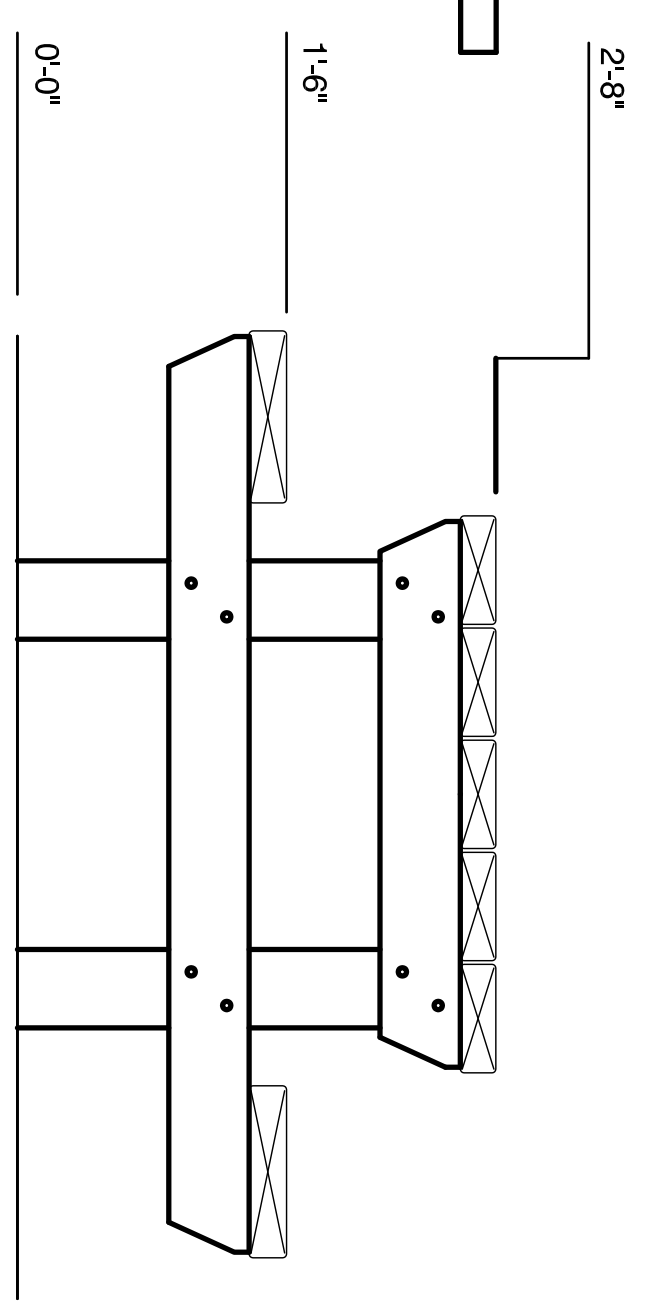
**1 PICNIC TABLE WITH SEATS**  
SCALE: N.T.S.



TOP VIEW

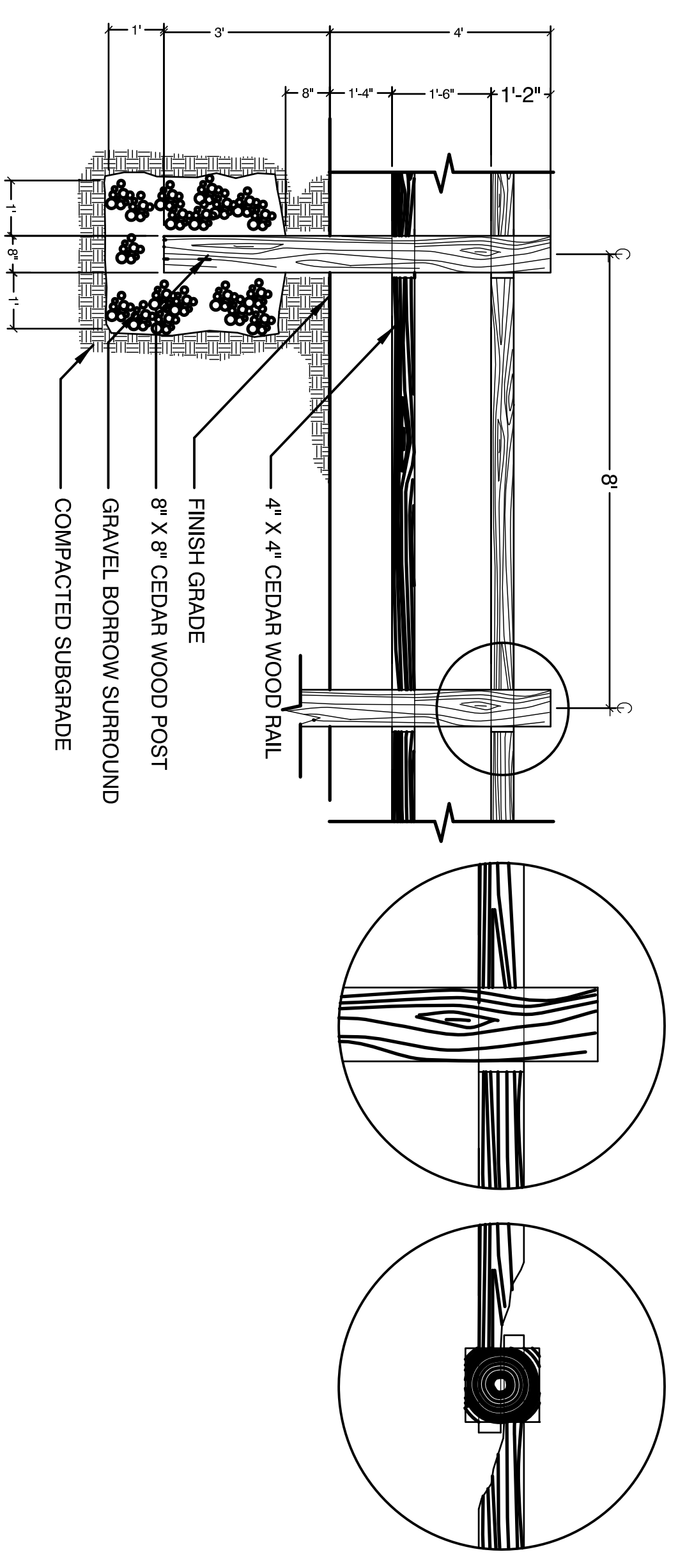
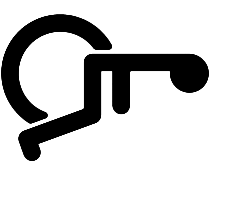


FRONT VIEW



END VIEW

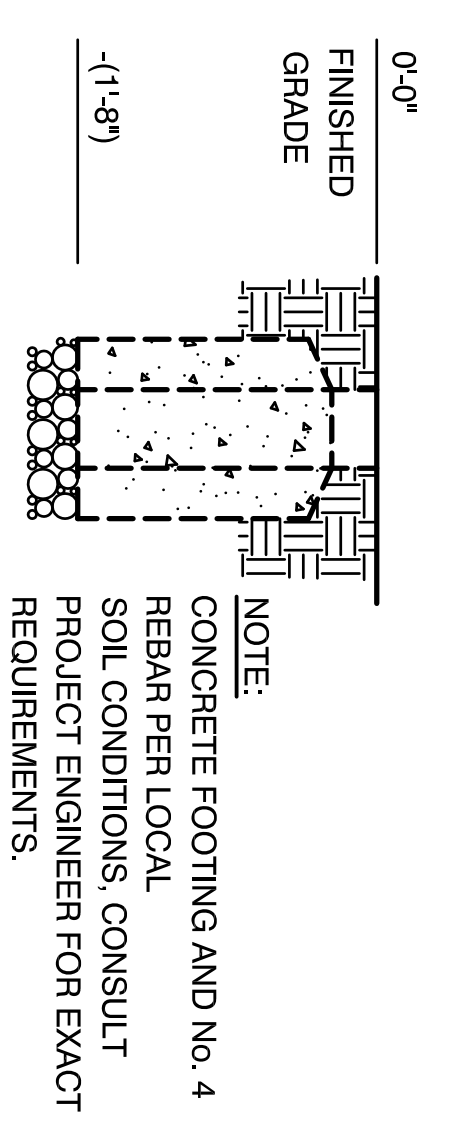
**2 ACCESSIBLE PICNIC TABLE WITH SEATS**  
SCALE: N.T.S.



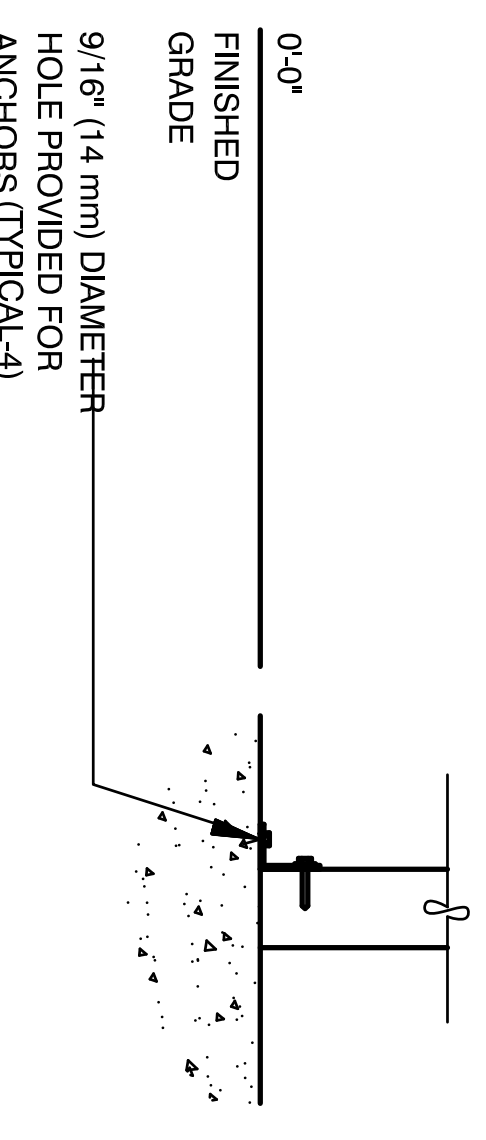
BLOW-UP SECTION

BLOW-UP PLAN

**3 PICNIC TABLE EMBEDMENT/PEDESTAL MOUNT OPTIONS DETAIL**  
SCALE: N.T.S.



DIRECT EMBEDMENT



PEDESTAL MOUNT

NOTE:  
CONCRETE FOOTING AND NO. 4 REBAR PER LOCAL SOIL CONDITIONS. CONSULT PROJECT ENGINEER FOR EXACT REQUIREMENTS.

**4 SPLIT RAIL WOOD FENCE DETAIL - BASE BID ADD ALT & VARIOUS LOCATIONS**  
SCALE: N.T.S.