

ADDENDUM NUMBER 2:

CITY OF PORTSMOUTH, NEW HAMPSHIRE MULTI-PURPOSE RECREATION FIELDS & REGIONAL STORMWATER TREATMENT SYSTEM PROJECT

CONTRACT DOCUMENTS AND TECHNICAL SPECIFICATIONS

**Issued: May 12, 2020
For Bids Due: May 19, 2020**

This addendum modifies, amends, and supplements parts of the Contract Documents, Technical Specifications, and Construction Drawings for the **City of Portsmouth, NH Multi-Purpose Recreation Fields & Regional Stormwater Treatment System Project**, and is hereby made an integral part thereof by reference and shall be as binding as though inserted in its entirety in the locations specified herein. The Contractor shall notify their subcontractors and suppliers of any changes or modifications contained in this addendum.

Bidders shall acknowledge receipt of this **Addendum No. 2** on the Bid Form.

Bidders are hereby notified that no changes have been made to the bid due date and time. Bids are still due on **May 19, 2020 at 2:00 p.m.**

The Contract Documents, Technical Specifications, and Construction Drawings for the subject project shall be supplemented and/or amended as follows:

A. GENERAL

1. The non-mandatory pre-bid meeting attendance sheet is attached.
2. The Engineer's Estimate for the project **Base Bid is \$4,300,000.**
3. Since the time of the existing conditions topographic survey, additional surplus material has been stockpiled on site. This stockpile was surveyed on April 28, 2020 as shown in the attached figure. At that date, the volume of this material was approximately 6,000 cubic yards, but since then, the City has continued to add material to this stockpile. This material may be used as common borrow for the proposed work, but material within four feet of the finished grade must pass the 3-inch sieve. Material placed deeper than 4-feet below finished grade may contain stones up to 18" in diameter (average) but must be well mixed with smaller particle soil to minimize voids and achieve good compaction. Particles larger than 18" must be removed from material used as common borrow/embankment in place, and if not suitable for reuse elsewhere on the project, must be disposed of by the Contractor. Management of this material shall be subsidiary to the Site Preparation, Stockpiled Re-handle and Material Compaction, and Earthwork pay items. The Auto CAD file of this stockpile, as surveyed on April 28th, is available to Contractors upon request. To request the file, please email: pcorbett@cmaengineers.com.

4. Invasive plants that are excavated for construction will be managed in accordance with “Best Management Practices for the Control of Invasive and Noxious Plant Species,” dated 2018, prepared by the New Hampshire Department of Transportation. See plan N-103 and Specifications Section 02100 – Site Work for more information. Invasive species have not been surveyed on the site but are primarily within the wetland areas that are to be disturbed by construction. The (non-standing water) area of wetlands disturbed from construction is approximately 9,300 SY. Not all of this area contains invasive species, but there may be invasive species in other areas on site.

B. TECHNICAL SPECIFICATIONS

1. Section 02790 – Synthetic Grass Infill System

A. Section 1.02 Qualifications and Submittals, Section E – shall be revised to read:

E. Approved Manufactures:

1. Fieldturf
2. Sprinturf
3. Shaw Sports Turf
4. Act Global
5. *AstroTurf Corporation*

B. Section 1.01 Work Included, Section G – shall be revised to read:

G. The General Contractor / Site Contractor shall be defined as the contractor who is responsible for the construction of the site components related to and located beneath the turf product, inclusive of but not limited to all cuts and fills as needed to establish an approved subgrade, the dynamic stone drainage system, flat drain system, and the perimeter collection system. The turf supplier / installer is a subcontractor to the general contractor. The General Contractor / Site Contractor *shall have the Turf Contractor on site when constructing any components of the synthetic turf field (drainage stone, field drainage, etc.) or* have installed a minimum of five (5) Turf Fields in the last three (3) years and shall provide documentation and contact information for such.

C. SECTION 26 56 68 – EXTERIOR ATHLETIC LIGHTING- Lighting System with LED Light Source, (updated see Attached Spec.)

2. Section 02801 – Recreational Fields Site Improvements

A. PART 2 – PRODUCTS, shall be revised to read:

2. Football Goal:

- a. Provide and install football goal posts in the locations shown on the Drawings and per manufacturer’s recommendations. Submit manufacturer’s product data and installation details for approval before ordering materials.
- b. Football goal posts shall be one of the following or Landscape Architect approved equal with Standard Yellow powder coated finish:
 - i. Model # GP-4380PL, “Football Goal Post – *8’ Offset*”, as manufactured by SportsField Specialties, P.O. Box 231, 41155 St. Hwy 10, Delhi, NY 13753, (888) 975-3343 and supplied locally by Pioneer Athletics – pioneerathletics.com.

B. PART 2 – PRODUCTS, shall be revised to read:

7. Storage Shed

- a. There is to be one storage shed purchased and installed on a concrete pad. The shed shall be the **14 x 30 "Barn Garage B"** manufactured by Jamaica Cottage Shop 866-297-3760 or approved equal and will be made of hemlock with 4x4 post and beam wall framing, double pine doors with a pressure treated ramp. Shed shall have a gabled standing seam metal roof. Siding shall be 1" rough sawn pine board and batten siding with rough sawn pine trim. Color as selected by Owner's Representative.

3. Section 02820 – Chain Link Fence

A. 2.02 CHAIN LINK FENCE FABRIC – PVC COATED – shall be revised to read:

- A. Vinyl coated fabric shall be supplied with **Class 2B** (extrusion bonded) vinyl coating. The coating shall be applied over a galvanized steel core wire and be manufactured in accordance with Federal Specifications RR-F-191 and ASTM F668. The PVC coating shall have a final coating thickness of 0.015-0.025-inch and a core wire size diameter of 0.148-inch.
- B. Wire size: The finished wire size shall be 6 gauge.
- C. Height and Mesh Size: The fabric height shall be 4' & 6' feet high with a mesh size of **1 3/4-inches**.
- D. Selvage: Top edge and bottom edge of the fabric shall be knuckled for 4' fence height and **for 6' height**.

B. 2.04 SAFETY NETTING – shall be revised to read:

- A. Safety Netting
 1. Model #TFBSS630P-SG, **6.625" O.D., 6"** schedule 40 aluminum straight pole ball stopper system with standard coated black pole finish. Model TFBSS-NET-ULTRACROSS, 4 ply ultra-cross dyneema knotless UHMWPE netting, 1 3/4" square mesh with sewn rope binding on perimeter edges as manufactured by Sportsfield Specialties, Inc., 41155 State Highway 10, PO Box 231, Delhi, NY 13753, 1-888-3343, www.sportsfieldspecialties.com or approved equal from Aluminum Athletic Equipment (AAE) or Sportsedge.
 2. Contractor to provide engineered stamped drawings for approval.

C. CONSTRUCTION DRAWINGS

1. Sheet C-307, Detail A, Bioretention System Specifications, Products, Note 7, shall be revised to read:

7. Bioretention Soil Media Components*:
Amounts Mixed by Total Volume
60-85% - Sand (0.5 to 2.0 MM)(See specs on this sheet)
15-25% - Loam or Topsoil
3-8% - Organic Matter
2-5% - **Iron Filings (Zero Valent Iron)**

Attachments to Addendum No. 2:

Pre-bid Meeting Attendance

Stockpile Topography Figures

Specification Section 26 56 68 Exterior Athletic Lighting

Please acknowledge this Addendum within your proposal; failure to do so may disqualify the Bidder.

END OF ADDENDUM NO. 2

City of Portsmouth

Multi-purpose Recreation Fields & Regional Stormwater Treatment Project

PRE-BID MEETING

10:00 am May 7, 2020

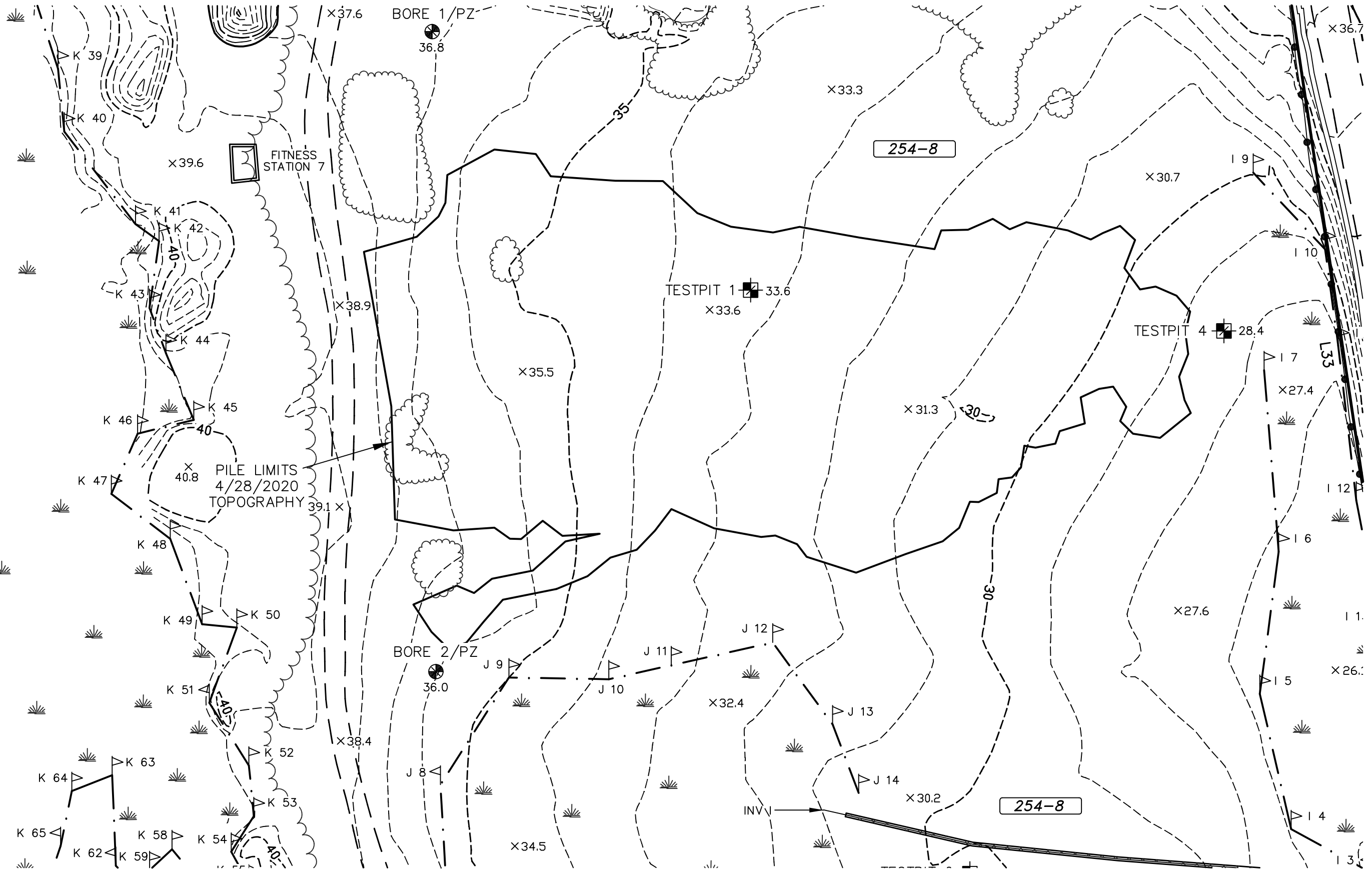
<u>Name</u>	<u>Company Name</u>	<u>Email</u>	<u>Phone</u>
Ramon Ruiz	Ion Electric LLC	info@ionelectricalLLC.com	603-513-2024
BEN Ruiz	ION ELECTRICAL LLC	"	"
Bob Lond	ASTROTURF	blord@astroturf.com	774-513-0020
Dave Cribbie	GW Brooks	Dave@GWBrooks.com	603-539-6211
David Marinelli	RAD Sports	DJMS@RADSPORTS.com	617-892-3798
Nick Martinec	David White & Son	NICK@DUNSPORT.com	(603) 856-5442
Scott Bonneau	S.V.R. Construction Inc	sbonneau@svrconstruction.com	(603) 332-4554
Samos Ware	Quirk	swarrene@quirkcorp.com	978-352-4666
Bernie Lee	Severino	blee@severinotrucking.com	603-234-8516
Delce Mackintosh	Synsk: Excavation	deke@synsk.com	603-770-5578
Bill Lorenz	Act Global	blorenz@actglobal.com	978-404-1789
Zack Schrock	Musco	zack.schrock@musco.com	603-703-9870

254-8

254-8

254-8

254-8



23734 CMA ENGINEERS, INC.
 PORTSMOUTH DPW SITE

PLOT OF 4/28/2020 PILE LIMITS OVER OLD TOPOGRAPHY
 4/29/2020 JCS

SECTION 26 56 68 – EXTERIOR ATHLETIC LIGHTING

Lighting System with LED Light Source

PART 1 – GENERAL

1.1 SUMMARY

- A. Work covered by this section of the specifications shall conform to the contract documents, engineering plans as well as state and local codes.
- B. The purpose of these specifications is to define the lighting system performance and design standards for the Portsmouth Soccer Fields lighting project using an LED Lighting source. The manufacturer / contractor shall supply lighting equipment to meet or exceed the standards set forth in these specifications.
- C. The sports lighting will be for the following venues:
 - 1. Soccer (2 Fields)
- D. The primary goals of this sports lighting project are:
 - 1. **Guaranteed Light Levels:** Selection of appropriate light levels impact the safety of the players and the enjoyment of spectators. Therefore light levels are guaranteed to not drop below specified target values for a period of 25 years.
 - 2. **Environmental Light Control:** It is the primary goal of this project to minimize spill light to adjoining properties and glare to the players, spectators and neighbors.
 - 3. **Control and Monitoring:** To allow for optimized use of labor resources and avoid unneeded operation of the facility, customer requires a remote on/off control system for the lighting system. Fields should be proactively monitored to detect luminaire outages over a 25-year life cycle. All communication and monitoring costs for 25-year period shall be included in the bid.

1.2 LIGHTING PERFORMANCE

- A. **Illumination Levels and Design Factors:** Playing surfaces shall be lit to an average target illumination level and uniformity as specified in the chart below. Lighting calculations shall be developed and field measurements taken on the grid spacing with the minimum number of grid points specified below. Appropriate light loss factors shall be applied and submitted for the basis of design. Average illumination level shall be measured in accordance with the IESNA LM-5-04 (IESNA Guide for Photometric Measurements of Area and Sports Lighting Installations). Illumination levels shall not to drop below desired target values in accordance to IES RP-6-15, Page 2, Maintained Average Illuminance and shall be guaranteed for the full warranty period.

Area of Lighting	Average Target Illumination Levels	Maximum to Minimum Uniformity Ratio	Grid Points	Grid Spacing
Soccer	30FC	2.5:1	96	30' x 30'

NOTE: Poles S7 and S4 shall have structural capacity under IBC 2015 standards for additional pole top luminaires on the back side of them, uniform to what is being proposed in this phase.

- B. **Color:** The lighting system shall have a minimum color temperature of 5700K and a CRI of 75.
- C. **Mounting Heights:** To ensure proper aiming angles for reduced glare and to provide better playability, minimum mounting heights shall be as described below. Higher mounting heights may be required based on photometric report and ability to ensure the top of the field angle is a minimum of 10 degrees below horizontal.

# of Poles	Pole Designation	Pole Height
2	S1 and S2	70'

4	S3, S4, S7, and S8	100'
---	--------------------	------

1.3 ENVIRONMENTAL LIGHT CONTROL

- A. Light Control Luminaires: All luminaires shall utilize spill light and glare control devices including, but not limited to, internal shields, louvers and external shields. No symmetrical beam patterns are accepted.
- B. Spill Light and Glare Control: To minimize impact on adjacent properties, spill light and candela values must not exceed the following levels taken at 3 feet above grade.

Property Line	Maximum
Horizontal Footcandles	< 7 FC
Vertical Footcandles	< 9 FC

- C. Spill Scans: Spill scans must be submitted indicating the amount of horizontal and vertical footcandles along the specified lines. Light levels shall be taken at 30-foot intervals along the boundary line. Readings shall be taken with the meter orientation at both horizontal and aimed towards the most intense bank of lights. Illumination level shall be measured in accordance with the IESNA LM-5-04 after 1 hour warm up.
- D. The first page of a photometric report for all luminaire types proposed showing horizontal and vertical axial candle power shall be provided to demonstrate the capability of achieving the specified performance. Reports shall be certified by a qualified testing laboratory with a minimum of five years experience or by a manufacturer’s laboratory with a current accreditation under the National Voluntary Laboratory Accreditation Program for Energy Efficient Lighting Products. A summary of the horizontal and vertical aiming angles for each luminaire shall be included with the photometric report.

PART 2 – PRODUCT

2.1 SPORTS LIGHTING SYSTEM CONSTRUCTION

- A. Manufacturing Requirements: All components shall be designed and manufactured as a system. All luminaires, wire harnesses, drivers and other enclosures shall be factory assembled, aimed, wired and tested.
- B. Durability: All exposed components shall be constructed of corrosion resistant material and/or coated to help prevent corrosion. All exposed carbon steel shall be hot dip galvanized per ASTM A123. All exposed aluminum shall be powder coated with high performance polyester or anodized. All exterior reflective inserts shall be anodized, coated, and protected from direct environmental exposure to prevent reflective degradation or corrosion. All exposed hardware and fasteners shall be stainless steel of 18-8 grade or better, passivated and coated with aluminum-based thermosetting epoxy resin for protection against corrosion and stress corrosion cracking. Structural fasteners may be carbon steel and galvanized meeting ASTM A153 and ISO/EN 1461 (for hot dipped galvanizing), or ASTM B695 (for mechanical galvanizing). All wiring shall be enclosed within the cross-arms, pole, or electrical components enclosure.
- C. System Description: Lighting system shall consist of the following:
 - 1. Galvanized steel poles and cross-arm assembly.
 - 2. Non-approved pole technology:
 - a. Square static cast concrete poles will not be accepted.
 - b. Direct bury steel poles which utilize the extended portion of the steel shaft for their foundation will not be accepted due to potential for internal and external corrosive reaction to the soils and long term performance concerns.

3. Lighting systems shall use concrete foundations. See Section 2.4 for details.
 - a. For a foundation using a pre-stressed concrete base embedded in concrete backfill the concrete shall be air-entrained and have a minimum compressive design strength at 28 days of 3,000 PSI. 3,000 PSI concrete specified for early pole erection, actual required minimum allowable concrete strength is 1,000 PSI. All piers and concrete backfill must bear on and against firm undisturbed soil.
 - b. For anchor bolt foundations or foundations using a pre-stressed concrete base in a suspended pier or re-inforced pier design pole erection may occur after 7 days. Or after a concrete sample from the same batch achieves a certain strength.
 4. Manufacturer will supply all drivers and supporting electrical equipment
 - a. Remote drivers and supporting electrical equipment shall be mounted approximately 10 feet above grade in aluminum enclosures. The enclosures shall be touch-safe and include drivers and fusing with indicator lights on fuses to notify when a fuse is to be replaced for each luminaire. Disconnect per circuit for each pole structure will be located in the enclosure. Integral drivers are not allowed.
 - b. Manufacturer shall provide surge protection at the pole equal to or greater than 40 kA for each line to ground (Common Mode) as recommended by IEEE C62.41.2_2002.
 5. Wire harness complete with an abrasion protection sleeve, strain relief and plug-in connections for fast, trouble-free installation.
 6. All luminaires, visors, and cross-arm assemblies shall withstand 150 mph winds and maintain luminaire aiming alignment.
 7. Control cabinet to provide remote on-off control, monitoring, and entertainment features of the lighting system. See Section 2.3 for further details.
 8. Manufacturer shall provide lightning grounding as defined by NFPA 780 and be UL Listed per UL 96 and UL 96A.
 - a. Integrated grounding via concrete encased electrode grounding system.
 - b. If grounding is not integrated into the structure, the manufacturer shall supply grounding electrodes, copper down conductors, and exothermic weld kits. Electrodes and conductors shall be sized as required by NFPA 780. The grounding electrode shall be minimum size of 5/8 inch diameter and 8 feet long, with a minimum of 10 feet embedment. Grounding electrode shall be connected to the structure by a grounding electrode conductor with a minimum size of 2 AWG for poles with 75 feet mounting height or less, and 2/0 AWG for poles with more than 75 feet mounting height.
 9. Enhanced corrosion protection package: Due to the potentially corrosive environment for this project, manufacturers must provide documentation that their products meet the following enhanced requirements in addition to the standard durability protection specified above:
 - a) Exposed carbon steel horizontal surfaces on the crossarm assembly shall be galvanized to no less than a five (5) mil average thickness.
 - b) Exposed die cast aluminum components shall be Type II anodized per MIL-STD-8625 and coated with high performance polyester.
 - c) Exposed extruded aluminum components shall be Type II anodized per MIL-STD-8625 and coated with high performance polyester.
- D. Safety: All system components shall be UL listed for the appropriate application.

2.2 ELECTRICAL

- A. Electric Power Requirements for the Sports Lighting Equipment:
 1. Electric power: 480 Volt, 3 Phase
 2. Maximum total voltage drop: Voltage drop to the disconnect switch located on the poles shall not exceed three (3) percent of the rated voltage.
- B. Energy Consumption: The kW consumption for the field lighting system shall be 67kW, or less.

2.3 **CONTROL**

- A. Instant On/Off Capabilities: System shall provide for instant on/off of luminaires.
- B. Lighting contactor cabinet(s) constructed of NEMA Type 4 aluminum, designed for easy installation with contactors, labeled to match field diagrams and electrical design. Manual off-on-auto selector switches shall be provided.
- C. Dimming: System shall provide for 3-stage dimming (high-medium-low). Dimming will be set via scheduling options (Website, app, phone, fax, email)
- D. Remote Lighting Control System: System shall allow owner and users with a security code to schedule on/off system operation via a web site, phone, fax or email up to ten years in advance. Manufacturer shall provide and maintain a two-way TCP/IP communication link. Trained staff shall be available 24/7 to provide scheduling support and assist with reporting needs.

The owner may assign various security levels to schedulers by function and/or fields. This function must be flexible to allow a range of privileges such as full scheduling capabilities for all fields to only having permission to execute "early off" commands by phone. Scheduling tool shall be capable of setting curfew limits.

Controller shall accept and store 7-day schedules, be protected against memory loss during power outages, and shall reboot once power is regained and execute any commands that would have occurred during outage.

- E. Remote Monitoring System: System shall monitor lighting performance and notify manufacturer if individual luminaire outage is detected so that appropriate maintenance can be scheduled. The controller shall determine switch position (manual or auto) and contactor status (open or closed).
- F. Management Tools: Manufacturer shall provide a web-based database and dashboard tool of actual field usage and provide reports by facility and user group. Dashboard shall also show current status of luminaire outages, control operation and service. Mobile application will be provided suitable for IOS, Android and Blackberry devices.

Hours of Usage: Manufacturer shall provide a means of tracking actual hours of usage for the field lighting system that is readily accessible to the owner.

- 1. Cumulative hours: shall be tracked to show the total hours used by the facility
- 2. Report hours saved by using early off and push buttons by users.

- G. Communication Costs: Manufacturer shall include communication costs for operating the control and monitoring system for a period of 25 years.
- H. Communication with luminaire drivers: Control system shall interface with drivers in electrical components enclosures by means of powerline communication.

2.4 **STRUCTURAL PARAMETERS**

- A. Wind Loads: Wind loads shall be based on the 2015 International Building Code. Wind loads to be calculated using ASCE 7-10, an ultimate design wind speed of 130mph and exposure category C.
- B. Pole Structural Design: The stress analysis and safety factor of the poles shall conform to 2013 AASHTO Standard Specification for Structural Supports for Highway Signs, Luminaires, and Traffic Signals (LTS-6).
- C. Foundation Design: The foundation design shall be based on soil parameters as outlined in the geotechnical report. If no geotechnical report is available, the foundation design shall be based on soils that meet or exceed those of a Class 5 material as defined by 2015 IBC Table 1806.2.

- D. Foundation Drawings: Project specific foundation drawings stamped by a registered engineer in the state where the project is located are required. The foundation drawings must list the moment, shear (horizontal) force, and axial (vertical) force at ground level for each pole. These drawings must be submitted at time of bid to allow for accurate pricing.

PART 3 – EXECUTION

3.1 SOIL QUALITY CONTROL

- A. It shall be the Contractor's responsibility to notify the Owner if soil conditions exist other than those on which the foundation design is based, or if the soil cannot be readily excavated. Contractor may issue a change order request / estimate for the Owner's approval / payment for additional costs associated with:
 - 1. Providing engineered foundation embedment design by a registered engineer in the State of New Hampshire for soils other than specified soil conditions;
 - 2. Additional materials required to achieve alternate foundation;
 - 3. Excavation and removal of materials other than normal soils, such as rock, caliche, etc.

3.2 DELIVERY TIMING

- A. Delivery Timing Equipment On-Site: The equipment must be on-site 6-8 weeks from receipt of approved submittals and receipt of complete order information.

3.3 FIELD QUALITY CONTROL

- A. Illumination Measurements: Upon substantial completion of the project and in the presence of the Contractor, Project Engineer, Owner's Representative, and Manufacturer's Representative, illumination measurements shall be taken and verified. The illumination measurements shall be conducted in accordance with IESNA LM-5-04.
- B. Field Light Level Accountability
 - 1. Light levels are guaranteed not to fall below the target maintained light levels for the entire warranty period of 25 years. These levels will be specifically stated as "guaranteed" on the illumination summary provided by the manufacturer.
 - 2. The contractor/manufacturer shall be responsible for conducting initial light level testing and an additional inspection of the system, in the presence of the owner, one year from the date of commissioning of the lighting.
 - 3. The contractor/manufacturer will be held responsible for any and all changes needed to bring these fields back to compliance for light levels and uniformities. Contractor/Manufacturer will be held responsible for any damage to the fields during these repairs.
- C. Correcting Non-Conformance: If, in the opinion of the Owner or his appointed Representative, the actual performance levels including footcandles and uniformity ratios are not in conformance with the requirements of the performance specifications and submitted information, the Manufacturer shall be required to make adjustments to meet specifications and satisfy Owner.

3.4 WARRANTY AND GUARANTEE

- A. 25-Year Warranty: Each manufacturer shall supply a signed warranty covering the entire system for 25 years from the date of shipment. Warranty shall guarantee specified light levels. Manufacturer shall maintain specifically-funded financial reserves to assure fulfillment of the warranty for the full term. Warranty does not cover weather conditions events such as lightning or hail damage, improper installation, vandalism or abuse, unauthorized repairs or alterations, or product made by other manufacturers.
- B. Maintenance: Manufacturer shall monitor the performance of the lighting system, including on/off status, hours of usage and luminaire outage for 25 years from the date of equipment shipment. Parts and labor shall be covered such that individual luminaire outages will be repaired when the usage of

any field is materially impacted. Manufacturer is responsible for removal and replacement of failed luminaires, including all parts, labor, shipping, and equipment rental associated with maintenance. Owner agrees to check fuses in the event of a luminaire outage.

PART 4 – DESIGN APPROVAL

4.0 PRE-BID SUBMITTAL REQUIREMENTS (Non-Musco)

- A. Design Approval: The owner / engineer will review pre-bid submittals per section 4.0.B from all the manufacturers to ensure compliance to the specification 10 days prior to bid. If the design meets the design requirements of the specifications, a letter and/or addendum will be issued to the manufacturer indicating approval for the specific design submitted.
- B. Approved Product: Musco's Light-Structure System™ with TLC for LED™ is the approved product. All substitutions must provide a complete submittal package for approval as outlined in Submittal Information at the end of this section at least 10 days prior to bid. Special manufacturing to meet the standards of this specification may be required. An addendum will be issued prior to bid listing any other approved lighting manufacturers and designs.
- C. All listed manufacturers not pre-approved shall submit the information at the end of this section at least 10 days prior to bid. An addendum will be issued prior to bid; listing approved lighting manufacturers and the design method to be used.
- D. Bidders are required to bid only products that have been approved by this specification or addendum by the owner or owner's representative. Bids received that do not utilize an approved system/design, will be rejected.

**REQUIRED SUBMITTAL INFORMATION FOR ALL MANUFACTURERS (NOT PRE-APPROVED) 10 DAYS
PRIOR TO BID**

*All items listed below are mandatory, shall comply with the specification and be submitted according to pre-bid submittal requirements. Complete the Yes/No column to indicate compliance (Y) or noncompliance (N) for each item. **Submit checklist below with submittal.***

Yes/ No	Tab	Item	Description
	A	Letter/ Checklist	Listing of all information being submitted must be included on the table of contents. List the name of the manufacturer's local representative and his/her phone number. Signed submittal checklist to be included.
	B	Equipment Layout	Drawing(s) showing field layouts with pole locations
	C	On Field Lighting Design	Lighting design drawing(s) showing: <ul style="list-style-type: none"> a. Field Name, date, file number, prepared by b. Outline of field(s) being lighted, as well as pole locations referenced to the center of the field (x & y), Illuminance levels at grid spacing specified c. Pole height, number of fixtures per pole, horizontal and vertical aiming angles, as well as luminaire information including wattage, lumens and optics d. Height of light test meter above field surface. e. Summary table showing the number and spacing of grid points; average, minimum and maximum illuminance levels in foot candles (fc); uniformity including maximum to minimum ratio, coefficient of variance (CV), coefficient of utilization (CU) uniformity gradient; number of luminaires, total kilowatts, average tilt factor; light loss factor.
	D	Off Field Lighting Design	Lighting design drawing showing initial spill light levels along the boundary line (defined on bid drawings) in footcandles. Lighting design showing glare along the boundary line in candela. Light levels shall be taken at 30-foot intervals along the boundary line. Readings shall be taken with the meter orientation at both horizontal and aimed towards the most intense bank of lights.
	E	Photometric Report	Provide first page of photometric report for all luminaire types being proposed showing candela tabulations as defined by IESNA Publication LM-35-02. Photometric data shall be certified by laboratory with current National Voluntary Laboratory Accreditation Program or an independent testing facility with over 5 years experience.
	F	Performance Guarantee	Provide performance guarantee including a written commitment to undertake all corrections required to meet the performance requirements noted in these specifications at no expense to the owner. Light levels must be guaranteed to not fall below target levels for warranty period.
	G	Structural Calculations	Pole structural calculations and foundation design showing foundation shape, depth backfill requirements, rebar and anchor bolts (if required). Pole base reaction forces shall be shown on the foundation drawing along with soil bearing pressures. Design must be stamped by a structural engineer in the state of New Hampshire, if required by owner. (May be supplied upon award).
	H	Control & Monitoring System	Manufacturer of the control and monitoring system shall provide written definition and schematics for automated control system. They will also provide ten (10) references of customers currently using proposed system in the state of New Hampshire.
	I	Electrical Distribution Plans	Manufacturer bidding an alternate product must include a revised electrical distribution plan including changes to service entrance, panels and wire sizing, signed by a licensed Electrical Engineer in the state of New Hampshire.
	J	Warranty	Provide written warranty information including all terms and conditions. Provide ten (10) references of customers currently under specified warranty in the state of New Hampshire.
	K	Project References	Manufacturer to provide a list of ten (10) projects where the technology and specific fixture proposed for this project has been installed in the state of New Hampshire. Reference list will include project name, project city, installation date, and if requested, contact name and contact phone number.
	L	Product Information	Complete bill of material and current brochures/cut sheets for all product being provided.
	M	Delivery	Manufacturer shall supply an expected delivery timeframe from receipt of approved submittals and complete order information.

	N	Non-Compliance	Manufacturer shall list all items that do not comply with the specifications. If in full compliance, tab may be omitted.
	O	Cost of Ownership	Document cost of ownership as defined in the specification. Identify energy costs for operating the luminaires. Maintenance cost for the system must be included. All costs should be based on 25 Years

The information supplied herein shall be used for the purpose of complying with the specifications for the Portsmouth Soccer lighting project. By signing below I agree that all requirements of the specifications have been met and that the manufacturer will be responsible for any future costs incurred to bring their equipment into compliance for all items not meeting specifications and not listed in the Non-Compliance section.

Manufacturer: _____

Signature: _____

Contact Name: _____

Date: ____/____/____

Contractor: _____

Signature: _____