

STATE STREET / MIDDLE STREET CABINET RELOCATION 08/23/2018



CONSTRUCT NEW
CEMENT CONCRETE
FOUNDATION 12"
ABOVE GRADE; LOCATE
NEW CONTROLLER
CABINET 6" FROM FENCE

INTERCEPT & EXTEND
PVC CONDUITS TO
NEW CABINET LOCATION

RELOCATE EXISTING
PEDESTRIAN SIGNAL

CREATE NEW PERENNIAL
PLANTING BED W/ 6" OF LOAM
AT BACK OF SIDEWALK

REORIENT / RESET BRICK
SIDEWALK ADJACENT
TO CURB LINE WITH
ASPHALT BASE

MAINTAIN EXISTING
CURB LINE

REMOVE EXISTING CABINET
& EQUIPMENT; DELIVER TO
PORTSMOUTH DPW

INSTALL 2 CONCRETE
PULL BOXES FOR
CONDUIT REROUTING FOR
LIGHTING AND SIGNAL WIRES

RECONSTRUCT CEMENT
CONCRETE ADA RAMP

CONDUIT
STRUCTURE (7i)

PROP. POWER SOURCE

(9i)

(30)

(31)

(29)

(28)

(40)

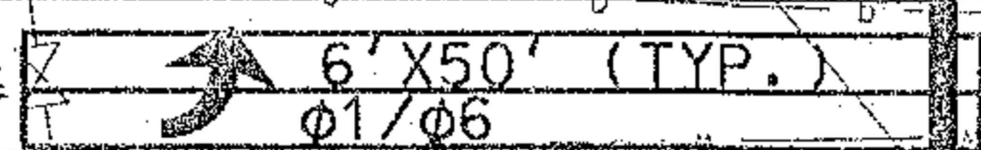
(32)

(33)

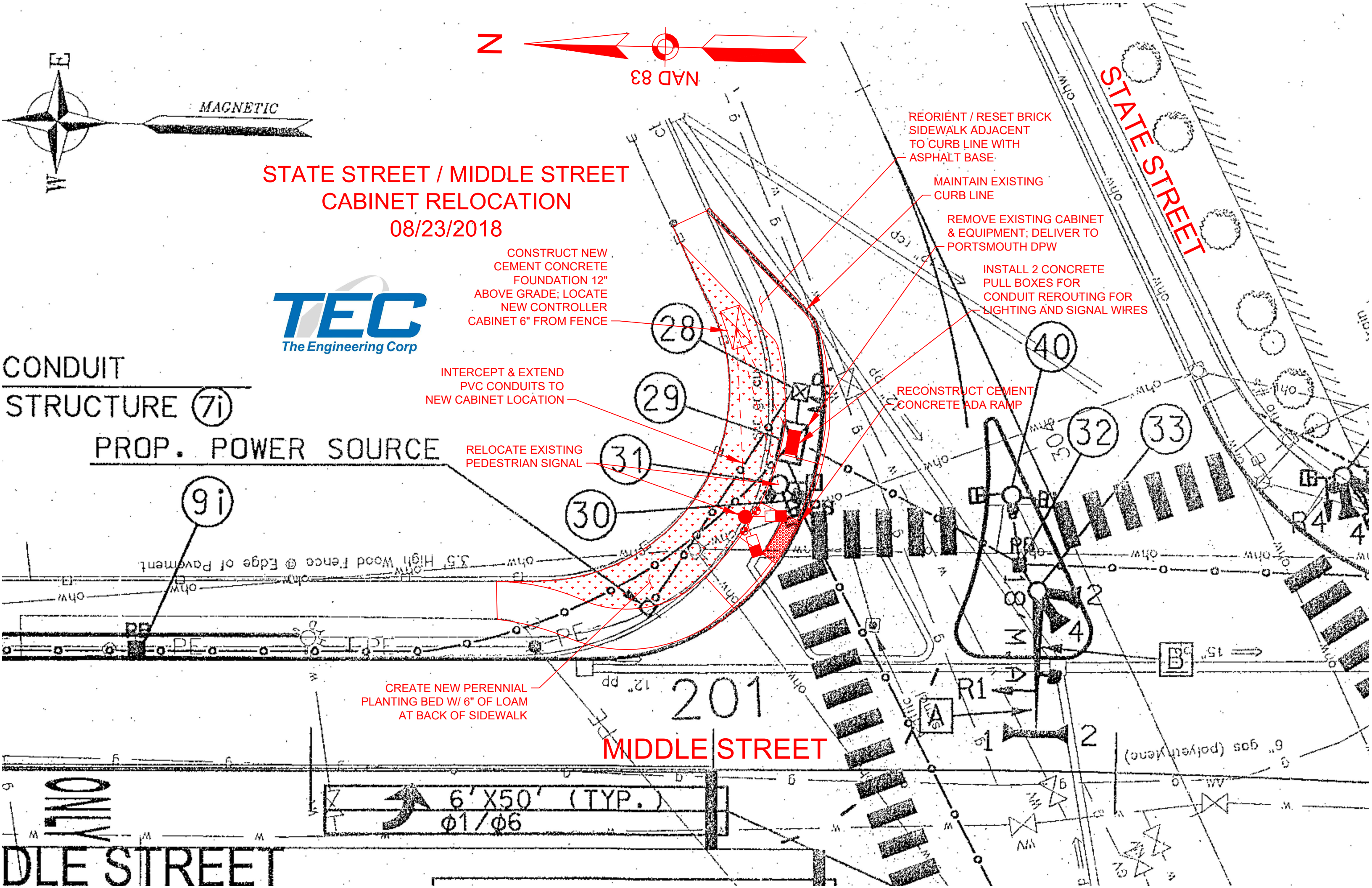
MIDDLE STREET

STATE STREET

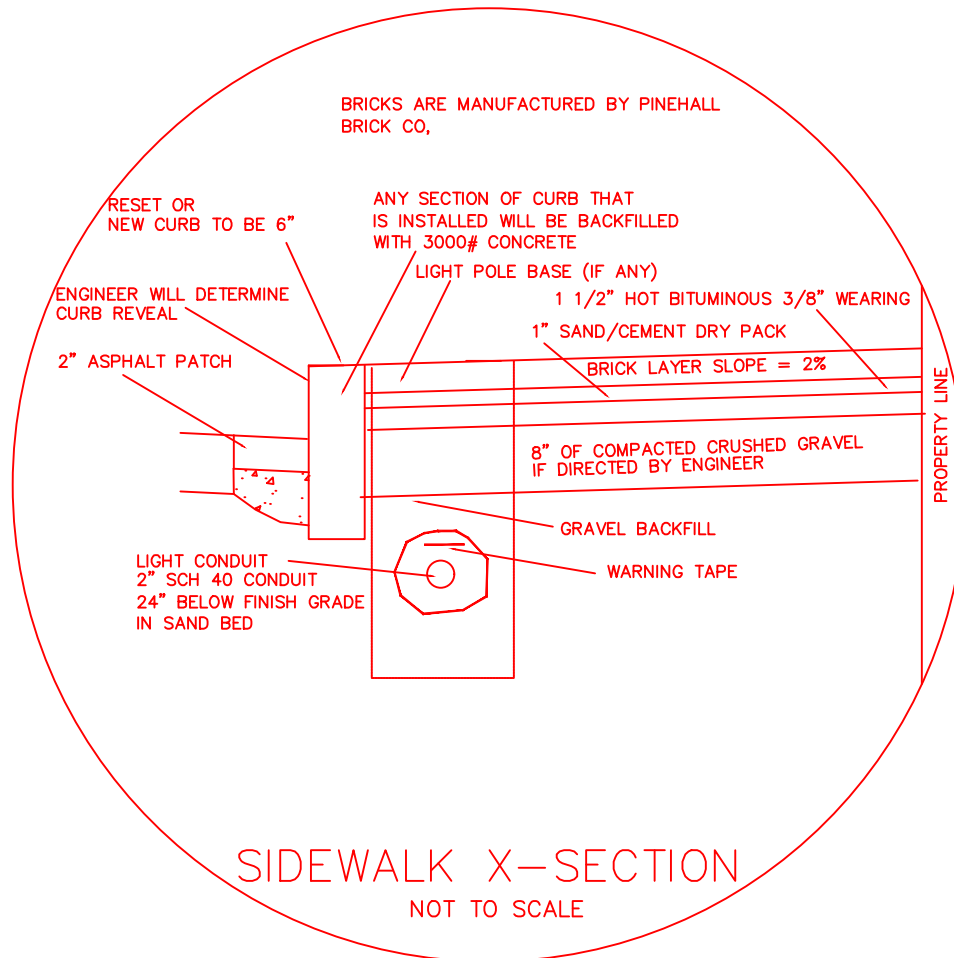
MIDDLE STREET



201



STATE STREET / MIDDLE STREET CABINET RELOCATION - 08/23/2018



NOTES:

1. REMOVE OLD CABINET FOUNDATION AS NECESSARY.
2. REPLACE EXISTING LANDSCAPING WITH NEW SIDEWALK CONSTRUCTED AS SHOWN USING THE PROVIDED STANDARD CROSS SECTION DETAIL (SIDEWALK X-SECTION).
3. PROVIDE NEW SIEMENS (EAGLE) TYPE P CABINET FULLY FURNISHED WITH NEW SIEMENS M60 EQUIPMENT. PROVIDE CONCRETE FOUNDATION 12" ABOVE GRADE, NO RISER UNDER CABINET. SEE PROVIDED SPECIFICATION (ITEM 616.191).
4. PROVIDE NEW CABLING AS NECESSARY TO AVOID ANY UNDERGROUND SPLICING.
5. PROVIDE 6' OF NEW CAST IRON RADIUS TIP DOWN PANELS IN 7'x3'x6" THICK CONCRETE PAD. ALL OTHER SIDEWALK MATERIALS ARE BRICK.
6. PROVIDE PRICING FOR BRICK SIDEWALK SEPARATELY, PAID FOR BY THE SQUARE FOOT. SEE PROVIDED SPECIFICATION (ITEM 608.5) AND DETAIL (SIDEWALK X-SECTION).