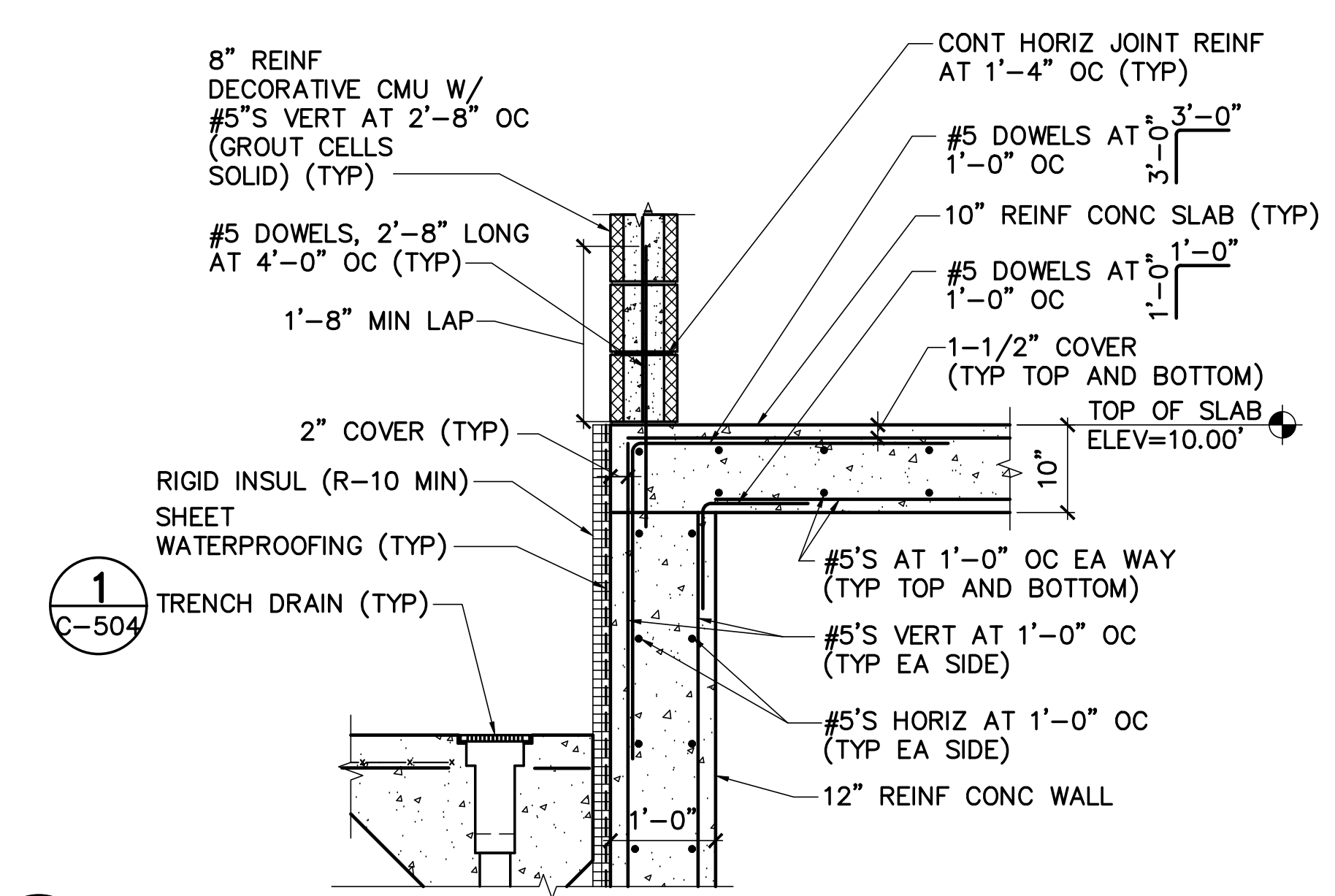
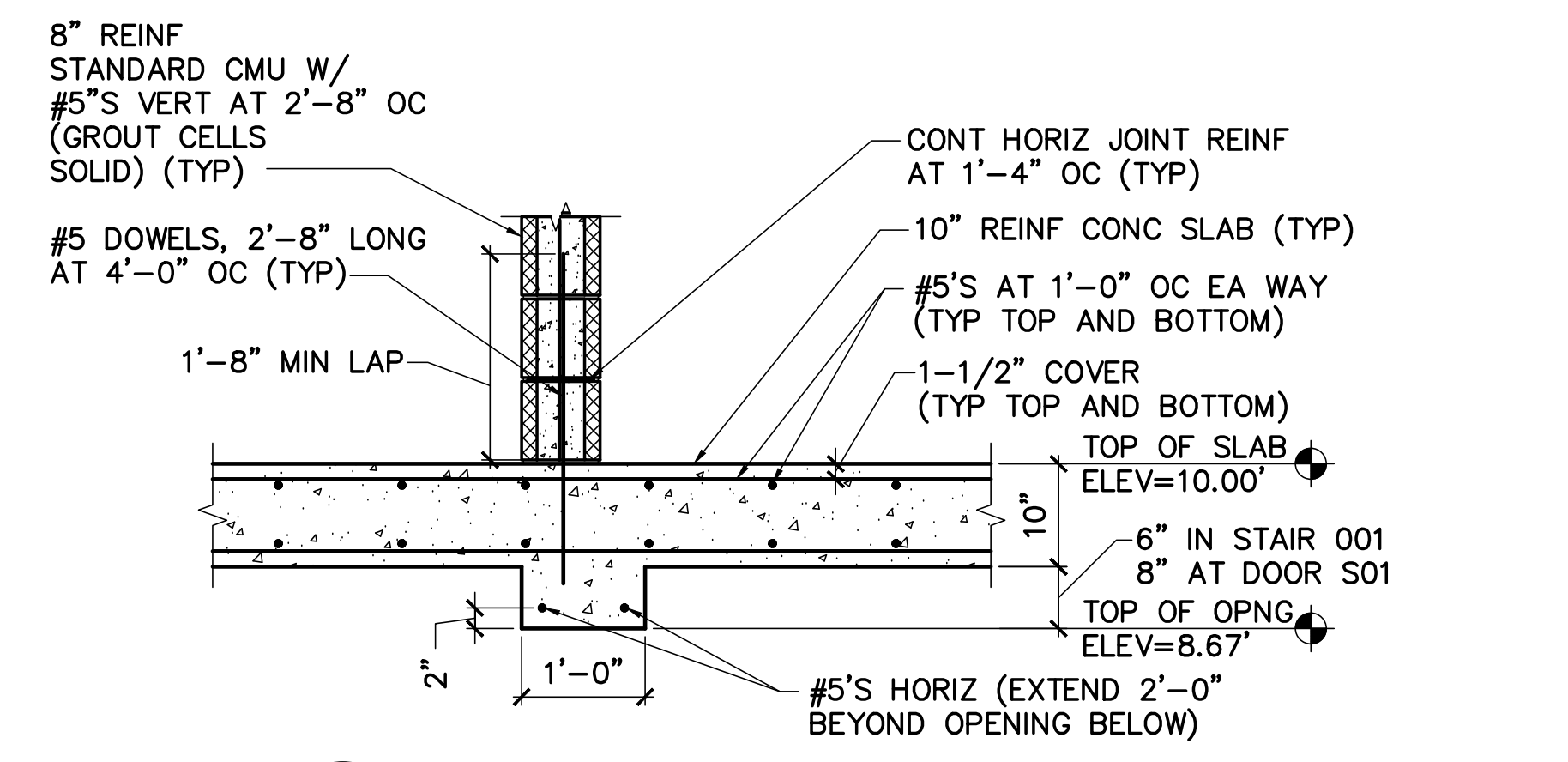


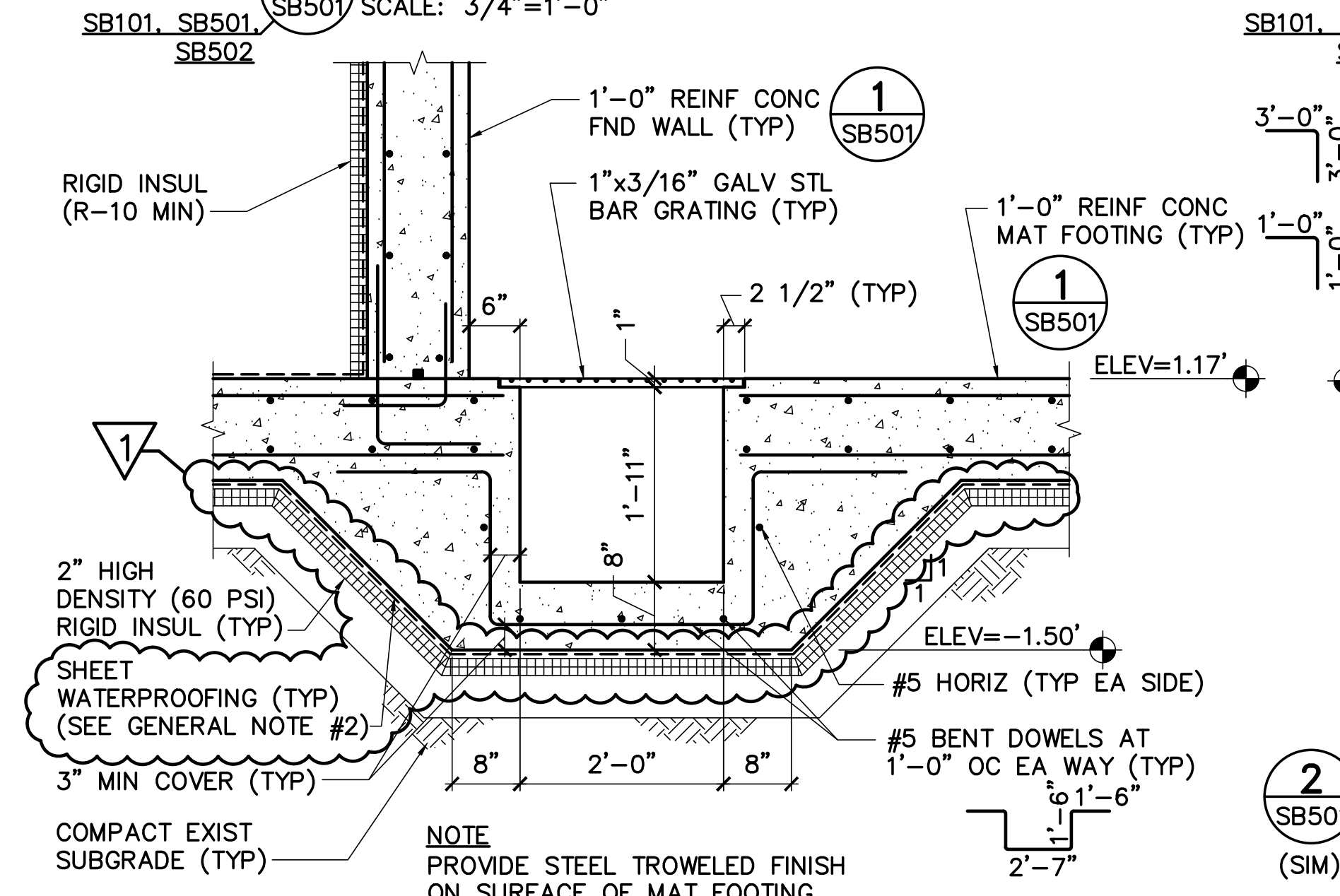
1 REIN CONC WALL/MAT FOOTING DETAIL
SB501 SCALE: 3/4"=1'-0"



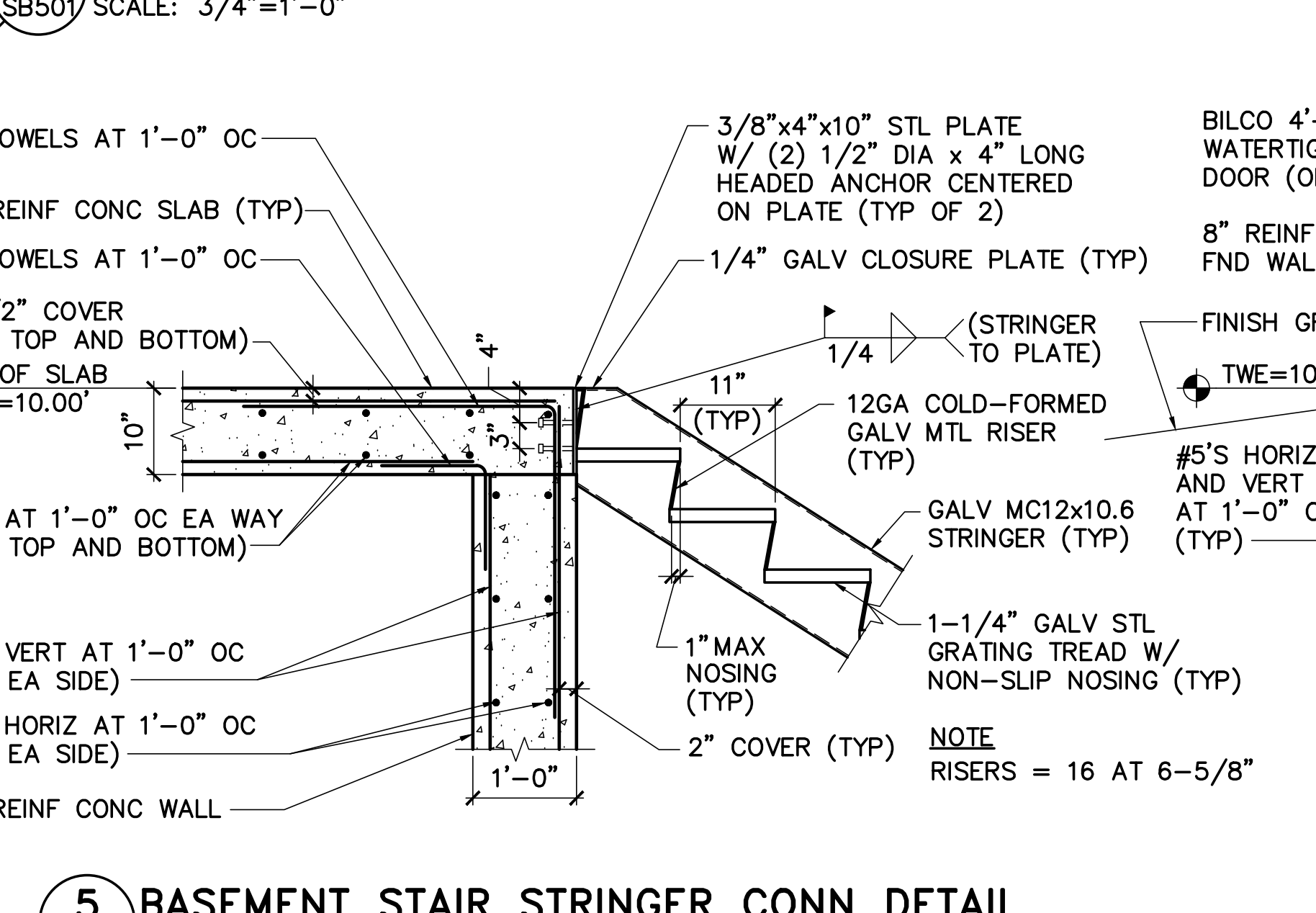
2 REIN CONC STRUCTURAL SLAB/REIN CONC WALL DETAIL
SB501 SCALE: 3/4"=1'-0"



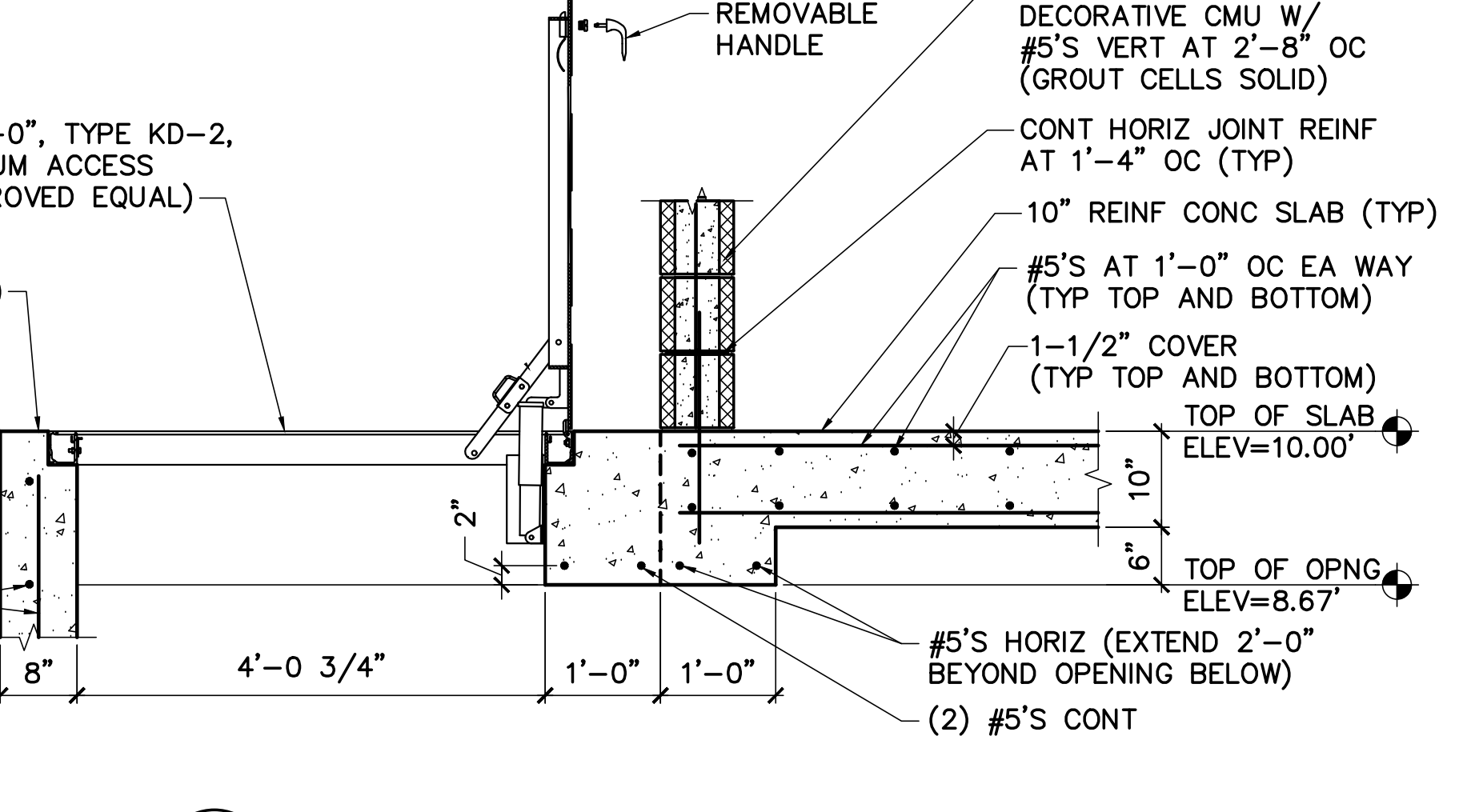
3 TYP WALL OPENING HEAD DETAIL
SB501 SCALE: 3/4"=1'-0"



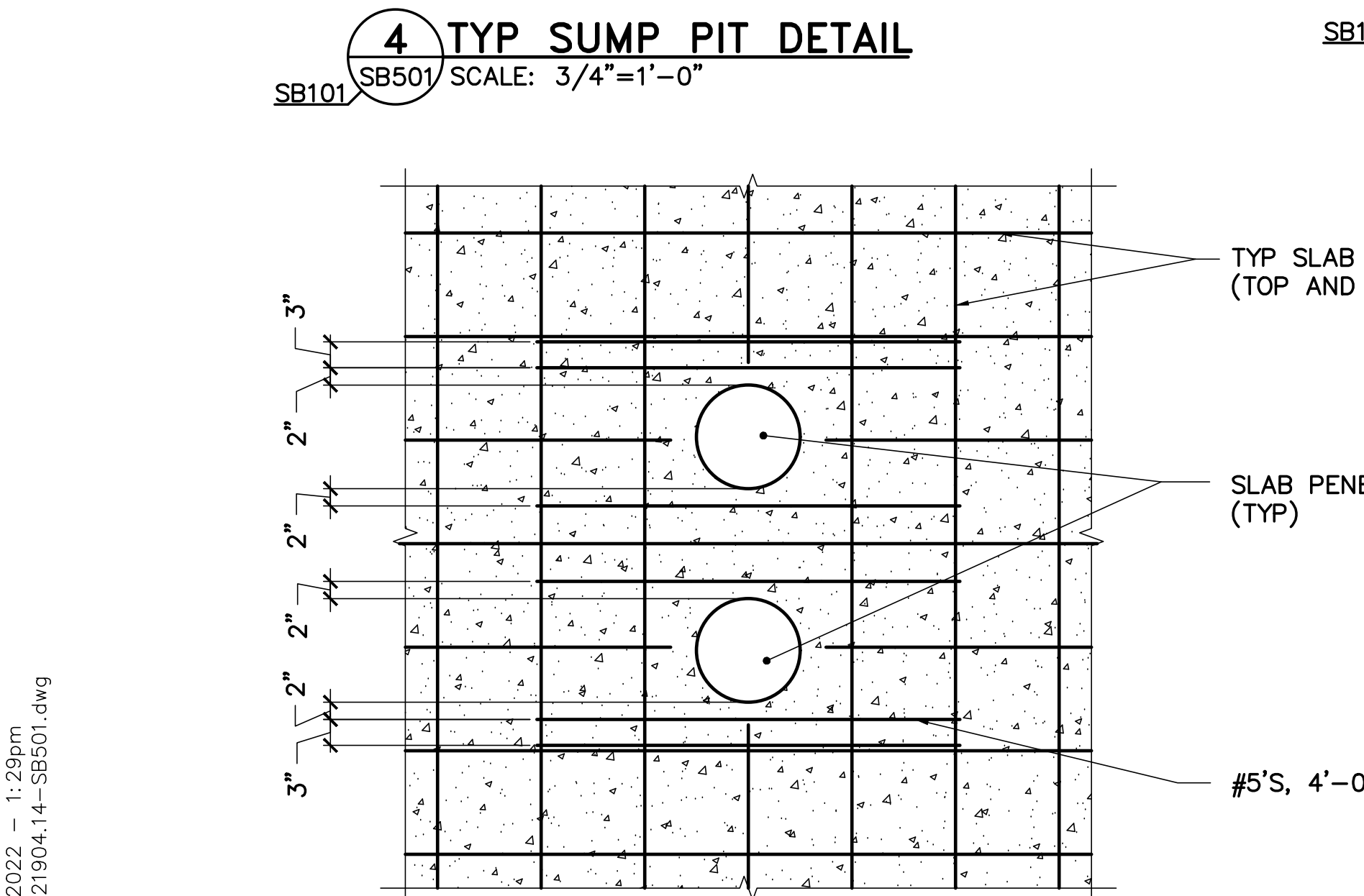
4 TYP SUMP PIT DETAIL
SB501 SCALE: 3/4"=1'-0"



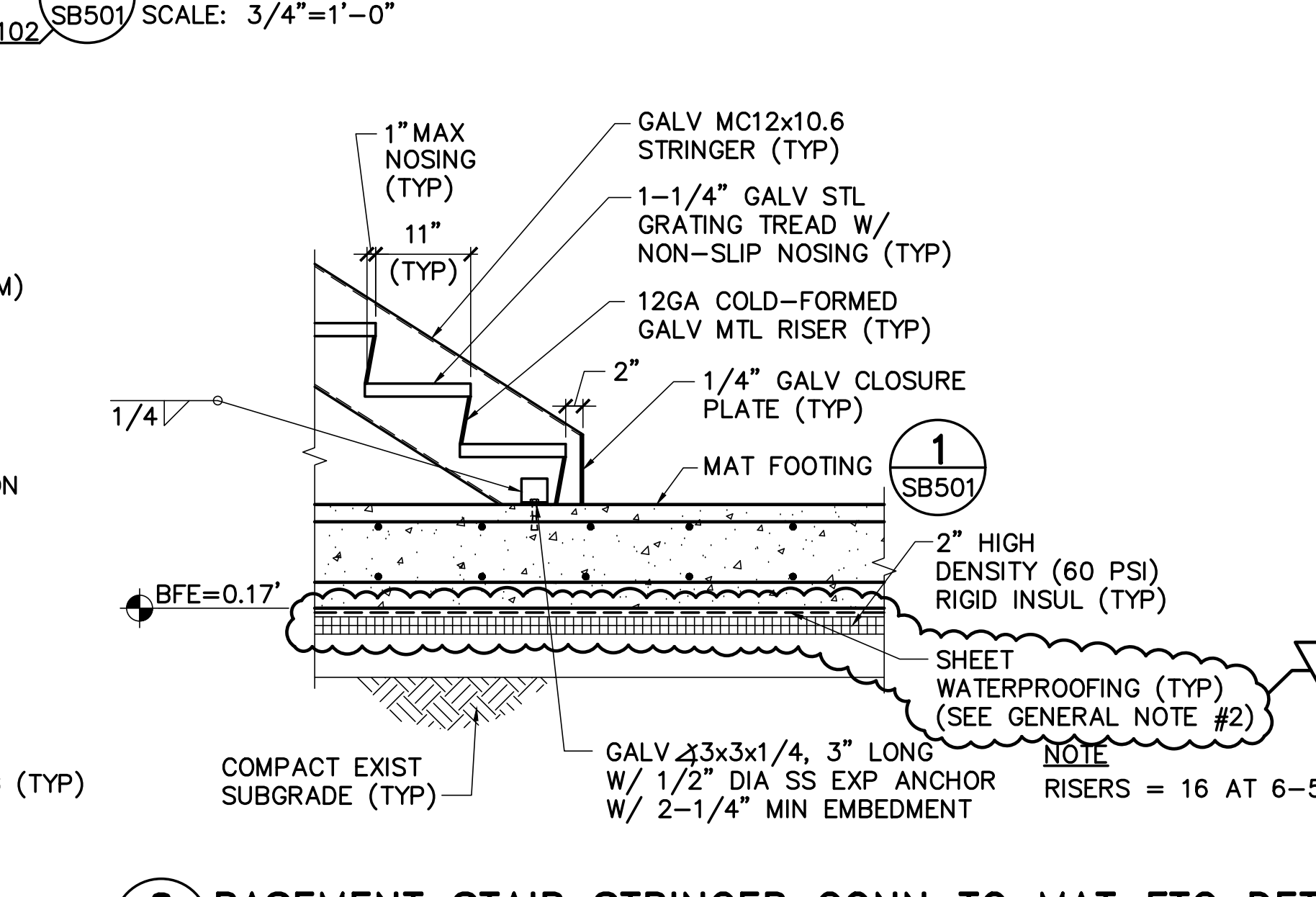
5 BASEMENT STAIR STRINGER CONN DETAIL
SB501 SCALE: 3/4"=1'-0"



6 EXTERIOR ACCESS DOOR DETAIL
SB501 SCALE: 3/4"=1'-0"



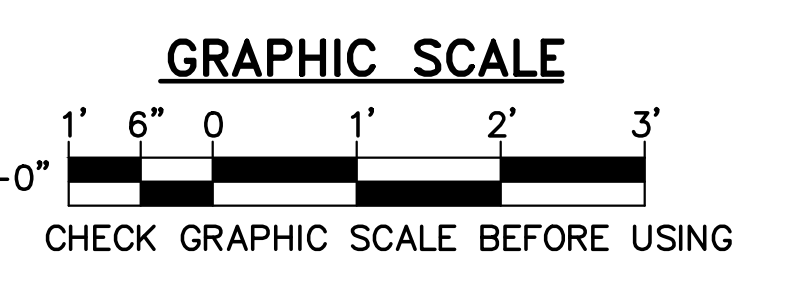
7 TYP REIN LAYOUT AT SLAB PENETRATIONS
SB501 SCALE: 3/4"=1'-0"



8 BASEMENT STAIR STRINGER CONN TO MAT FTG DETAIL
SB501 SCALE: 3/4"=1'-0"

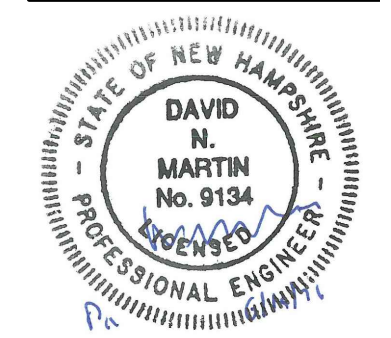
GENERAL NOTES

- AT CONTRACTOR'S OPTION, THE VERTICAL REINFORCING DOWELS TYING THE CMU WALL TO THE SUPPORTED SLAB/FOUNDATION WALL MAY BE DRILLED AND EPOXY GROUDED IN PLACE AFTER SLAB PLACEMENT USING A MINIMUM 1'-0" EMBEDMENT DEPTH.
- SHEET WATERPROOFING BENEATH MAT FOOTING: BASIS-OF-DESIGN PRODUCT IS POLYGUARD UNDERSEAL UNDERSLAB MEMBRANE OR APPROVED EQUAL.



NO.	DATE	DESCRIPTION	BY
1	09/13/22	ADENDUM NO. 1	DNM

13 Sep, 2022 - 1:29pm
C:\FILE\21904\14-SB501.dwg



DESIGNED BY: DNM
 DRAWN BY: MJC
 CHECKED BY: DNM
 PROJECT: 21904.14

CITY OF PORTSMOUTH
 1 Junkins Avenue
 Portsmouth, NH 03801

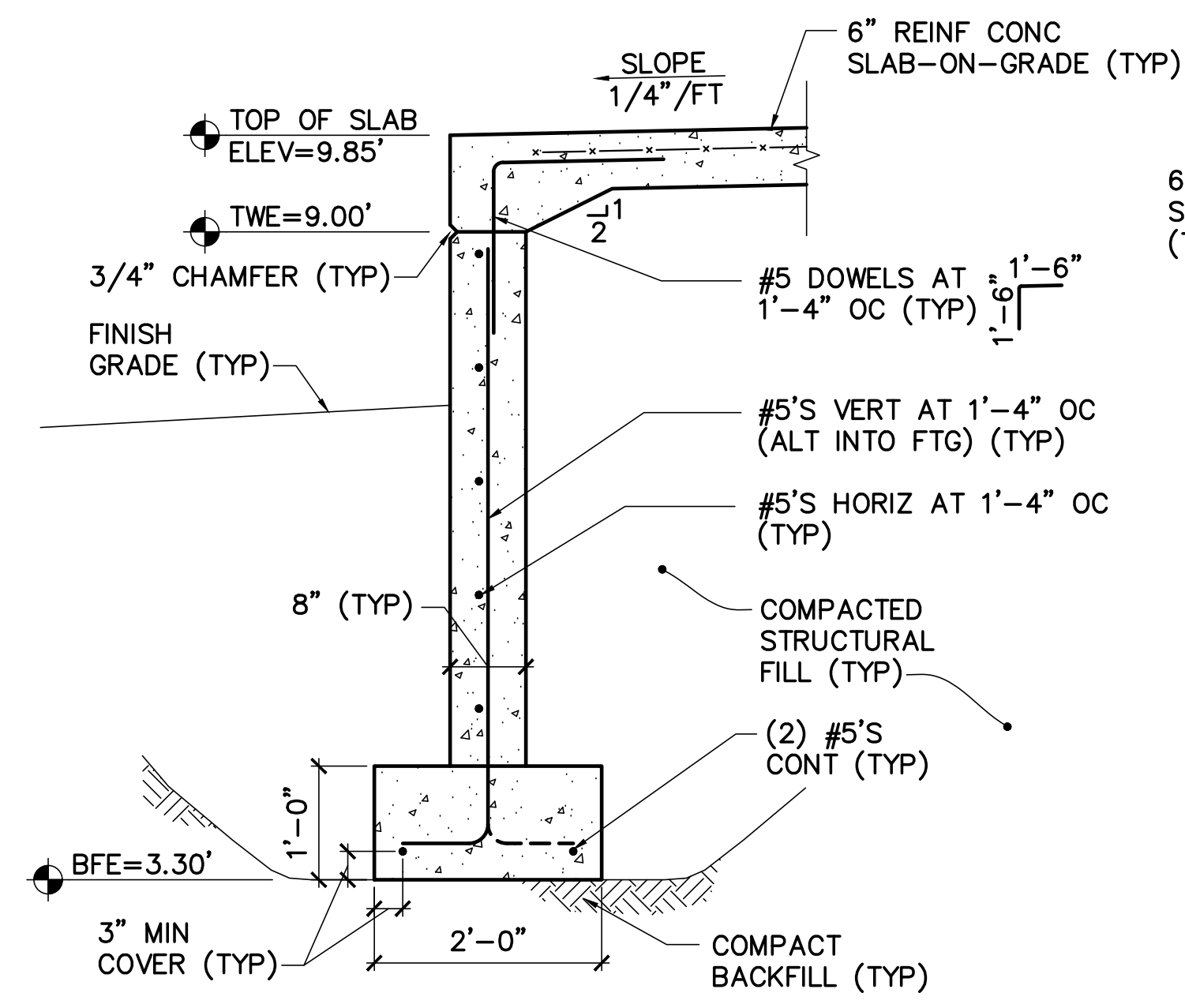
PEIRCE ISLAND PUMP HOUSE
 AND POOL RENOVATION
 Peirce Island Road
 Portsmouth, NH 03801

FOUNDATION DETAILS 2

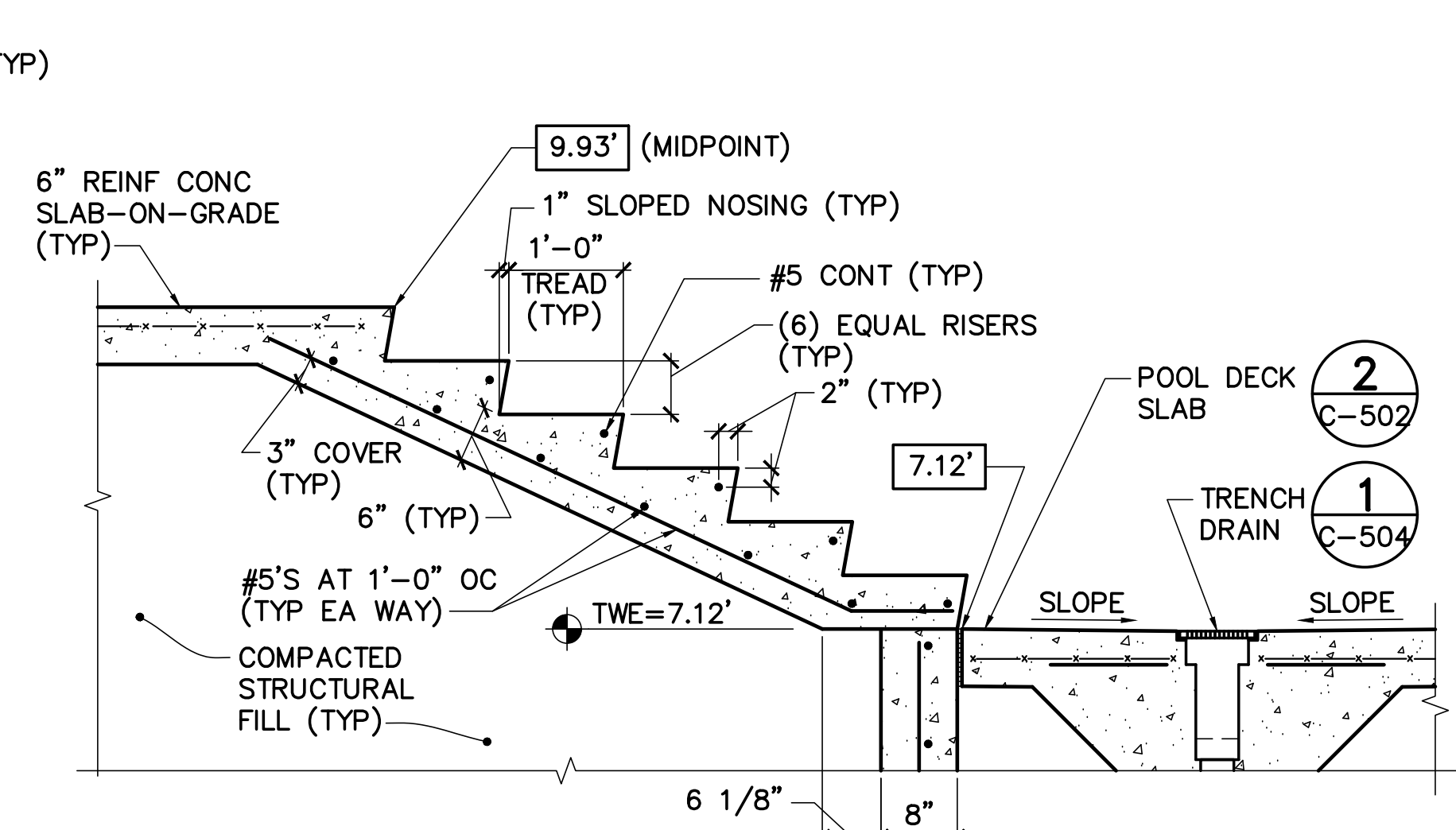
SCALE: AS NOTED
 DATE: 06/17/2022

DWG.: SB502

SHEET: 23 OF 72

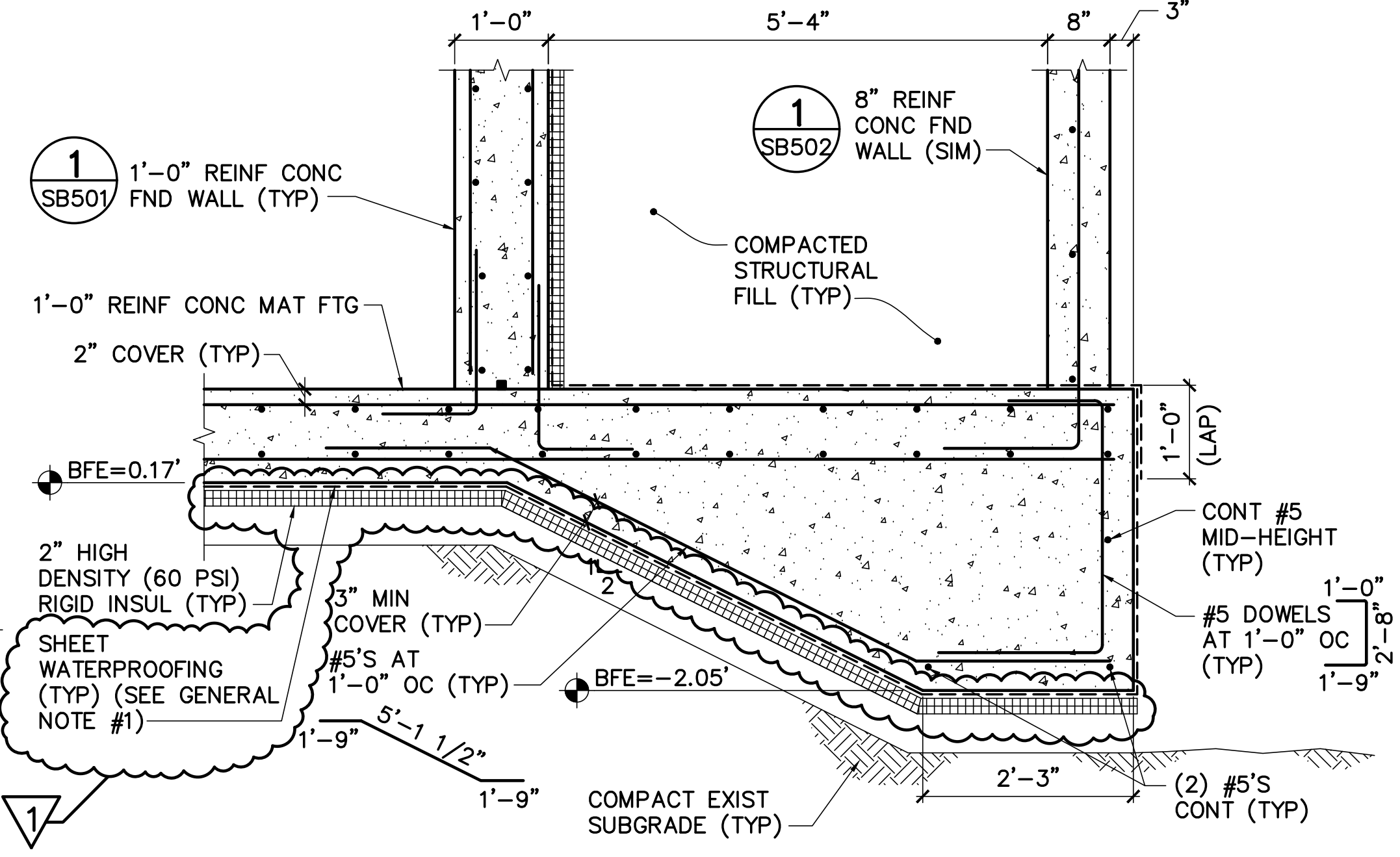


1 TYP REIN CONC STOOP WALL DETAIL
 SB502 SCALE: 3/4"=1'-0"
 SB101, SB102, SB502



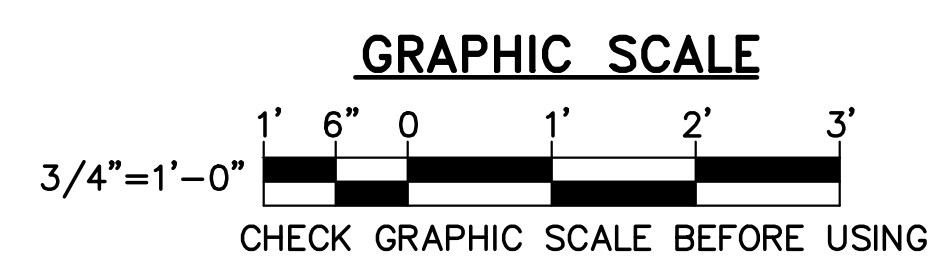
NOTES
 1. PROVIDE LIGHT BROOM FINISH ON EACH STAIR TREAD.
 2. PROVIDE SMOOTH RUBBED FINISH ON EACH STAIR RISER.
 3. RAILINGS NOT SHOWN FOR CLARITY.

2 REIN CONC STAIRS DETAIL
 SB502 SCALE: 3/4"=1'-0"
 SB102

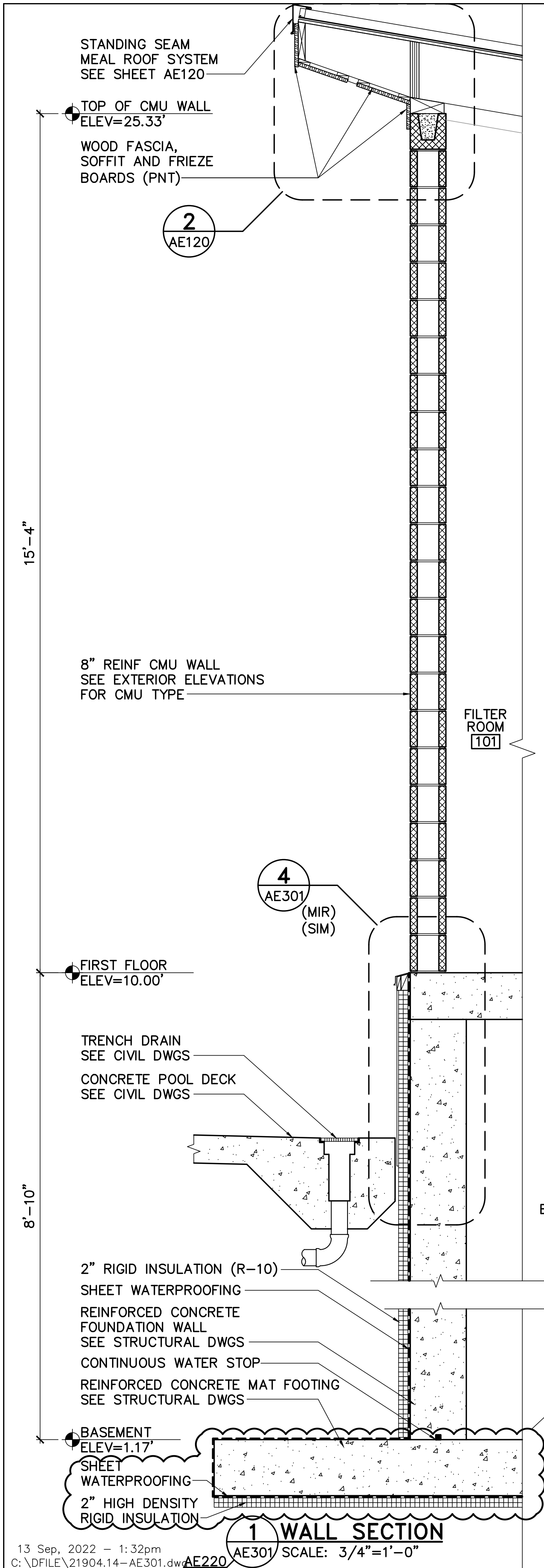


3 SOUTH EDGE MAT FOOTING EDGE DETAIL
 SB502 SCALE: 3/4"=1'-0"
 SB101, SB501

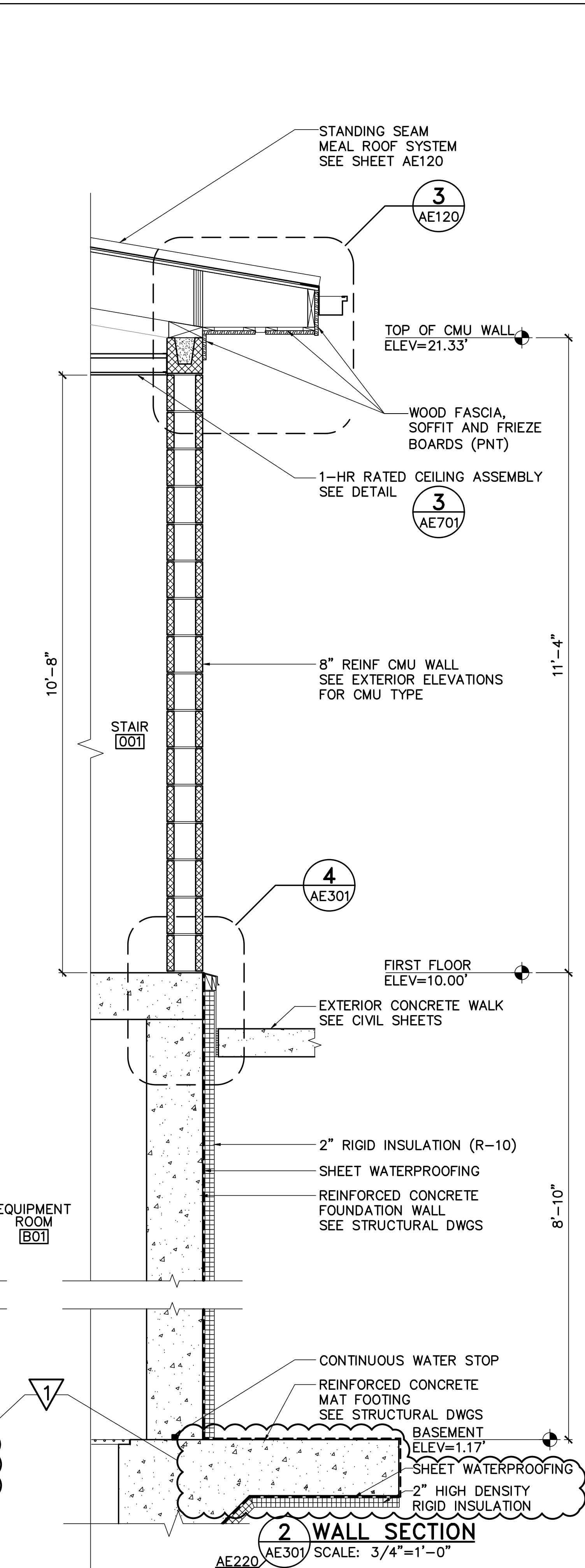
1 GENERAL NOTE
 1. SHEET WATERPROOFING BENEATH MAT FOOTING: BASIS-OF-DESIGN PRODUCT IS POLYGUARD UNDERSEAL UNDERSLAB MEMBRANE OR APPROVED EQUAL.



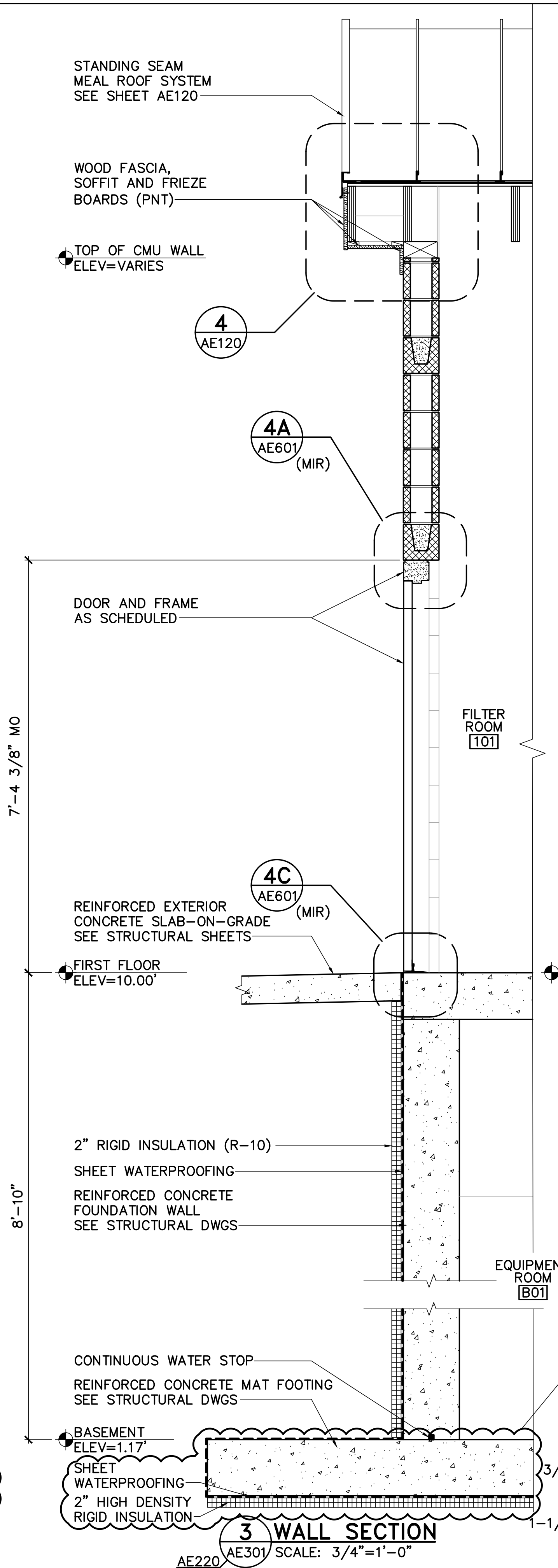
NO.	DATE	DESCRIPTION	BY
1	09/13/22	ADENDUM NO. 1	DNM
REVISIONS			



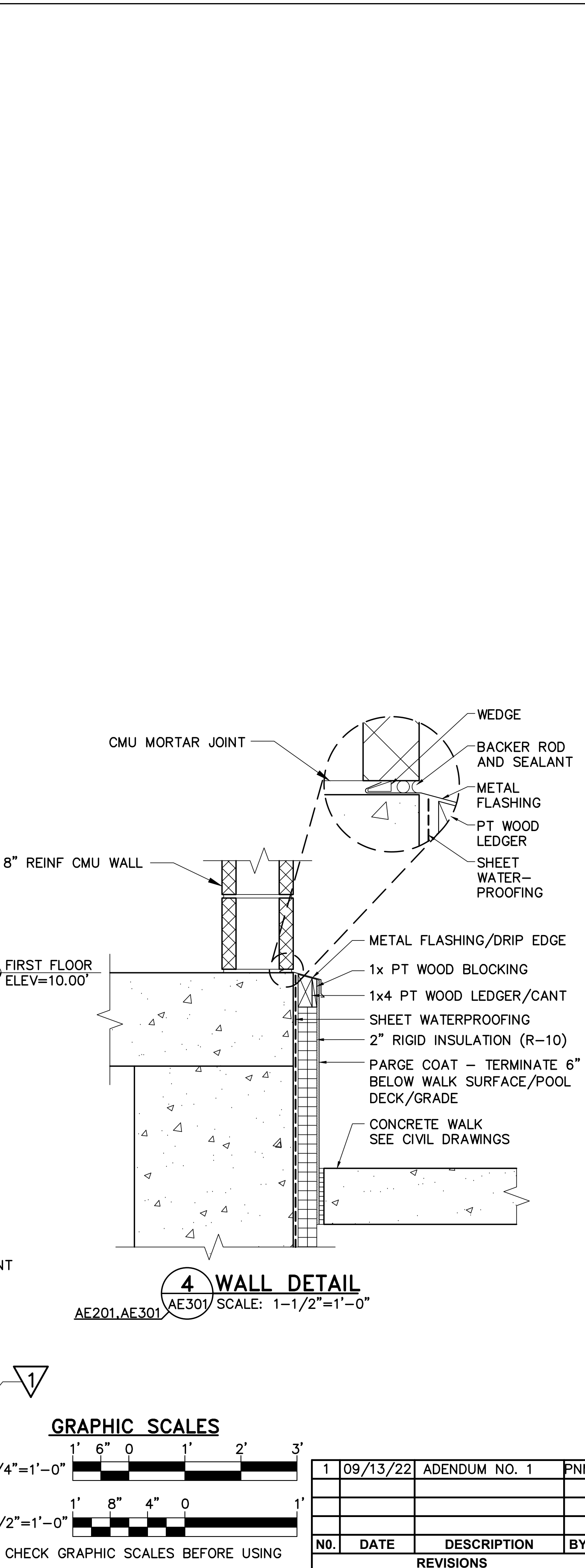
1 WALL SECTION
AE301 SCALE: 3/4"=1'-0"



2 WALL SECTION
AE301 SCALE: 3/4"=1'-0"



3 WALL SECTION
AE301 SCALE: 3/4"=1'-0"



4 WALL DETAIL
AE201, AE301 SCALE: 1-1/2"=1'-0"

GRAPHIC SCALES

3/4"=1'-0"

1-1/2"=1'-0"

CHECK GRAPHIC SCALES BEFORE USING

NO.	DATE	DESCRIPTION	BY
1	09/13/22	ADENDUM NO. 1	PNM

OAK POINT ASSOCIATES
ARCHITECTURE ■ ENGINEERING ■ PLANNING
85 Middle Street, Portsmouth, NH 03801 (T) 603.431.4649 (F) 603.431.1870 www.oakpoint.com

PETER MACGOVERN
LICENSED ARCHITECT
NO. 14974
STATE OF NEW HAMPSHIRE

DESIGNED BY: CAM
DRAWN BY: RMT
CHECKED BY: PNM
PROJECT: 21904.14

CITY OF PORTSMOUTH
1 Junkins Avenue
Portsmouth, NH 03801

PEIRCE ISLAND PUMP HOUSE AND POOL RENOVATION
Peirce Island Road
Portsmouth, NH 03801

WALL SECTIONS AND DETAILS

SCALE: AS NOTED
DATE: 06/17/2022
DWG: **AE301**
SHEET: **32** OF **72**