

City of

Portsmouth,

New Hampshire



Portsmouth as an Eco-Municipality

Fiscal Year 2024
Popular Annual Financial Report

July 1, 2023 - June 30, 2024

Table of Contents

	Page #
Letter from the City Manager...	1
Elected Officials.....	2
Organizational Chart.....	3
FY24 Awards, Accolades, and Accomplishments	4
FY24 Spotlight: Portsmouth 400!...	5
Engage in Your City Government.....	6
Portsmouth at a Glance.....	7
Economic Indicators.....	8
Property Tax Rate.....	9
Property Tax Levy, Assessments, and Equalization.....	10
Property Tax Timeline & Tax Relief	11
FY24 Financial Highlights	
Letter from the Deputy City Manager – Finance and Administration.....	12
Glossary of Financial Terms.....	13
Net Position.....	14
General Fund Revenues.....	16
General Fund Expenditures.....	17
Fund Balance.....	18
Capital Assets & Long-Term Debt.....	19
Water & Sewer Funds.....	20
FY25 Budget.....	22
Did you know?.....	23
Stay Connected.....	24
Contact Us.....	25

Popular Annual Financial Report

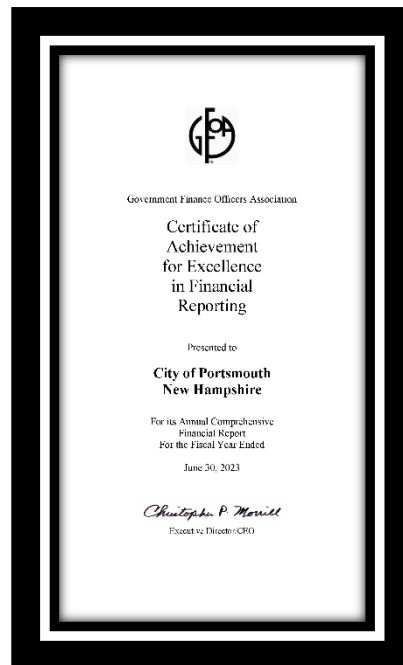
City of Portsmouth, New Hampshire



For the fiscal year ended June 30, 2024

Prepared by:
City of Portsmouth, Finance Department
Deputy City Manager - Finance & Administration, Nathan Lunney

Award for Outstanding Achievement in Popular Annual Financial Reporting



The [Government Finance Officers Association of the United States and Canada \(GFOA\)](#) has given an Award for Outstanding Achievement in Popular Annual Financial Reporting to the City of Portsmouth, NH for the Fiscal Year ended June 30, 2023. The Award for Outstanding Achievement in Popular Annual Financial Reporting is a prestigious national award recognizing conformance with the highest standards for preparation of the state and local government popular reports.

In order to receive an Award for Outstanding Achievement in Popular Annual Financial Reporting, a government unit must publish a Popular Annual Financial Report, whose contents conform to program standards of creativity, presentation, understandability, and reader appeal.

An Award for Outstanding Achievement in Popular Annual Financial Reporting is valid for a period of one year only. This is the City of Portsmouth's 7th PAFR Award. We believe our current report continues to conform to the Popular Annual Financial Reporting requirements, and we are submitting it to GFOA to determine its eligibility for another Award.

A Letter from the City Manager

To the Citizens of Portsmouth,

I am pleased to present the Popular Annual Financial Report (PAFR) for the year ended June 30, 2024. This report is prepared for the non-financial reader and includes valuable information on the financial well-being of the City. It highlights various programs and accolades which affirm that Portsmouth is a great place to live, play, work, and visit. This PAFR represents our commitment to maintaining clear and consistent communication with you as we look to stay connected and engaged.

This report documents how City Council policies are implemented to achieve established goals for taxpayers and endeavors to explain the financial strategies and tactics applied to accomplish that work. Long-standing municipal financial policies have served us well and continue to provide the foundation for the City's AAA bond rating with Standard & Poor's. Upon that solid footing, Portsmouth has once again finished the fiscal year in a strong financial position.

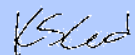
We make strategic financial decisions such as the maintenance of our rate stabilization policies, the timing of bonding, and holding the line on rate increases and property tax revaluations, in order to insulate Portsmouth taxpayers from impacts like those seen elsewhere in the state. These tactics were especially critical in FY24, where the City continued to battle with limited supply chain and contractor availability, making it advantageous to advance projects that could be realized and adjust those that could not. Careful examination of each City Department's budget requests, opportunistic use of the federal ARPA funds, and the implementation of practical efficiencies wherever possible allowed us to keep the tax rate in check.

The City, specifically our Finance Department, was again recognized for excellence in financial reporting. The Government Finance Officers Association awarded its Triple Crown to commend the Department for the clarity and professionalism of the City Budget, the PAFR, and the Annual Comprehensive Financial Report. Our priority is to report the budget and the City's financial affairs to you in a transparent and easily understood manner, and to provide extensive additional information through links to online documents and guides for those who wish to understand in greater detail how City finances work.

On behalf of the Finance Team led by Deputy City Manager Nathan Lunney, I am proud to work in support of the City Council's focus on a culture of cost management among all employees while maintaining the same level of services that directly support our high quality of life here in the great City of Portsmouth.

I am grateful to the City Department Heads and their staff who work to prepare budgets that allow us to deliver City services diligently and faithfully. We stand prepared to weather the impacts of global economic uncertainty thanks in large part to the City's long-standing financial practices and to the professional, hard-working, and dedicated City staff. It is my honor to be the leader of this exceptional organization.

Sincerely,



Karen S. Conard, City Manager



City Officials (as of June 30, 2024)

City Manager
Karen Conard

Deputy City Manager/Regulatory Counsel
Suzanne Woodland

Deputy City Manager – Finance & Administration
Nathan Lunney

Assistant City Manager for Economic & Community Development
Sean Clancy

Deputy Finance Director
Andrew Purgiel

Director of Public Works & Facilities
Peter Rice

City Attorney
Susan Morrell

City Clerk
Kelli Barnaby

Human Resources Director
Kelly Harper

Chief Information Officer
Patricia Ainsworth

Fire Chief
William McQuillen

Chief of Police
Mark Newport

Superintendent of Schools
Zach McLaughlin

Director of Planning & Sustainability
Peter Britz

Health Officer
Kimberly McNamara

Inspections Director
Shanti Wolph

Revenue Administrator/Tax Collector
Amy Wentworth

Deputy Public Works Director
Brian Goetz

City Assessor
Rosann Maurice-Lentz

Recreation Director
Todd Henley

Library Director
Christine Friese

Welfare Administrator
Ellen Tully

Portsmouth City Council

Portsmouth Elected Officials (FY24)

Police Commission



Kate Coyle, Chair
Buzz Scherr
Francesca Fernald

School Board



Nancy Novelline Clayburgh, Chair
Brian French, Vice-Chair
Liz Barrett
Patricia "Tish" Campbell
Christina "Pip" Clews
David "Leigh" Hudson
Byron Matto
Kerry Nolte
Lisa Rapaport

Fire Commission



Richard Gamester, Chair
Jennifer J. Mosher-Matthes, Vice-Chair
Michael K. Hughes, Clerk



Deaglan McEachern, Mayor



JoAnna Kelley, Assistant Mayor



John Tabor



Kate Cook



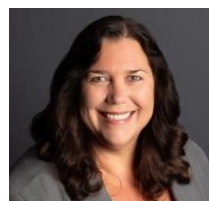
Josh Denton



Rich Blalock



Andrew Bagley



Beth Moreau



Vincent Lombardi

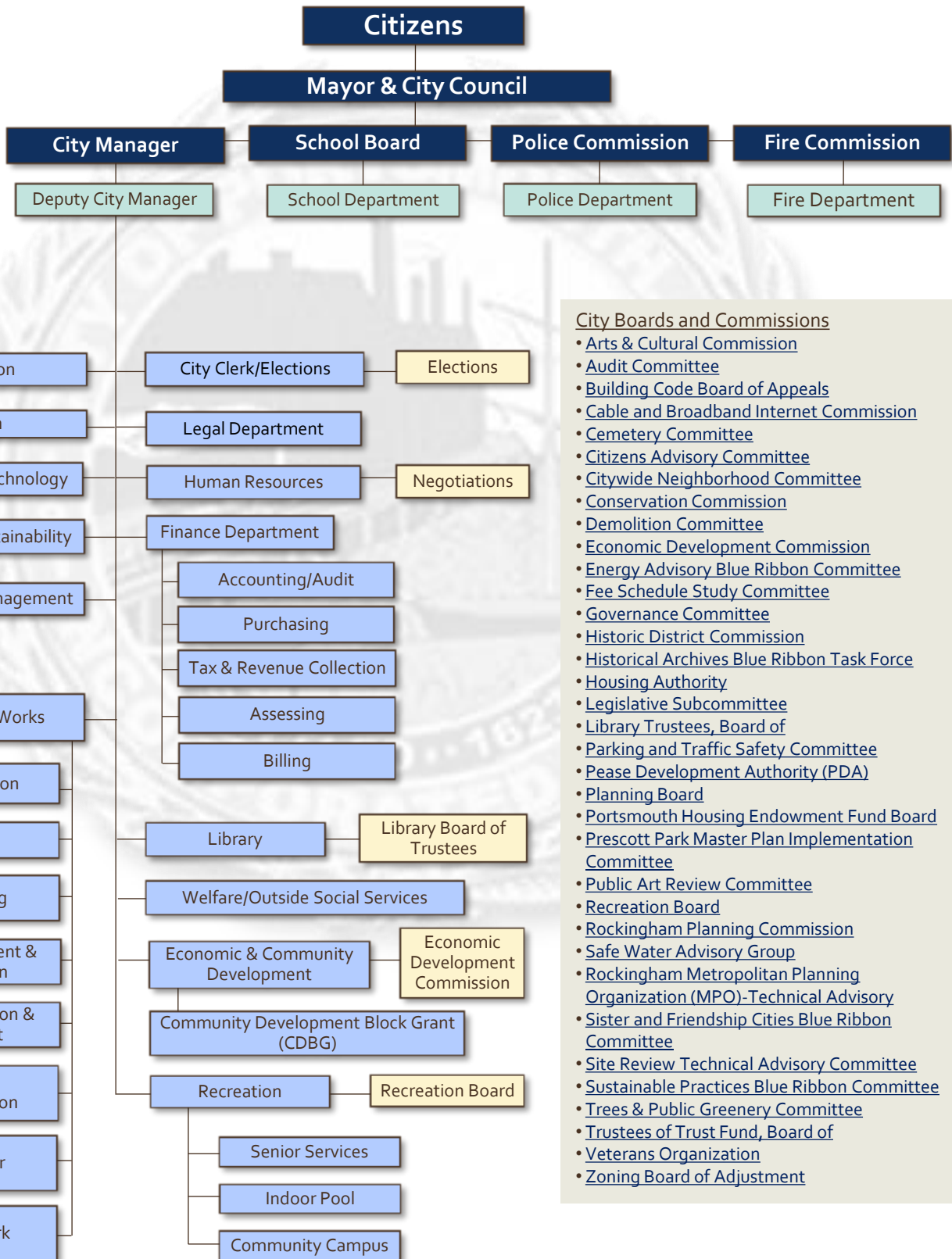
City Council meetings are held in the City Council Chambers, Municipal Complex, One Junkins Avenue, Portsmouth, New Hampshire 03801. The public is invited to attend City Council Meetings (meeting dates are available on the Meetings Calendar located on the City's website). The meetings are streamed live on Portsmouth's City YouTube Channel. For further information, call the City Clerk's Office at 603 – 610 – 7207.

FY24 Budget City Council Goals

- Invite and honor input from the community and encourage increased participation/engagement of youth
- Identify and promote strategies for local business retention and preservation of affordable commercial spaces
- Leverage local resources and partnerships to improve and support needs of residents, nonprofits, arts, and culture community
- Diversify and Enhance the supply of housing choices
- Proactively pursue the integration of sustainability, resilience, and climate change mitigation actions throughout City Government and the Community
- Continuously enhance City Council best practices to deliver a trusted, transparent, and responsive process
- Consistently communicate with community members and stakeholders, respecting channels of communication they prefer and keeping them informed

Citywide Organizational Chart

(As of June 30, 2024)



City Boards and Commissions

- [Arts & Cultural Commission](#)
- [Audit Committee](#)
- [Building Code Board of Appeals](#)
- [Cable and Broadband Internet Commission](#)
- [Cemetery Committee](#)
- [Citizens Advisory Committee](#)
- [Citywide Neighborhood Committee](#)
- [Conservation Commission](#)
- [Demolition Committee](#)
- [Economic Development Commission](#)
- [Energy Advisory Blue Ribbon Committee](#)
- [Fee Schedule Study Committee](#)
- [Governance Committee](#)
- [Historic District Commission](#)
- [Historical Archives Blue Ribbon Task Force](#)
- [Housing Authority](#)
- [Legislative Subcommittee](#)
- [Library Trustees, Board of](#)
- [Parking and Traffic Safety Committee](#)
- [Pease Development Authority \(PDA\)](#)
- [Planning Board](#)
- [Portsmouth Housing Endowment Fund Board](#)
- [Prescott Park Master Plan Implementation Committee](#)
- [Public Art Review Committee](#)
- [Recreation Board](#)
- [Rockingham Planning Commission](#)
- [Safe Water Advisory Group](#)
- [Rockingham Metropolitan Planning Organization \(MPO\)-Technical Advisory](#)
- [Sister and Friendship Cities Blue Ribbon Committee](#)
- [Site Review Technical Advisory Committee](#)
- [Sustainable Practices Blue Ribbon Committee](#)
- [Trees & Public Greenery Committee](#)
- [Trustees of Trust Fund, Board of](#)
- [Veterans Organization](#)
- [Zoning Board of Adjustment](#)

FY24 Awards, Accolades and Accomplishments

FY24 City Accomplishments

Arts, Culture and History

- [Blue-Ribbon Committee on Arts and Nonprofits](#) presented the 2023 Cultural Plan as guidance for the Arts & Cultural Commission and managed participation in the Americans for the Arts "Arts & Economic Prosperity 6" survey
- [Public Art Review Committee \(PARC\)](#) recommended a signature art piece for the Peirce Island Wastewater Treatment Facility through the Percent for Art Program
- [Blue Ribbon Committee on Historical Archives](#) requested capital funding to assess the City's collective archival items
- City welcomed visitors from its [Friendship Cities](#) and participated in the [Sister City partnership](#) project
- [Historic Cemetery Committee](#) cleaned 400 headstones, increased accessibility at Hall Cemetery, and organized a re-interment ceremony and finished preservation work at the North Cemetery

Department of Public Works

- Bridges
 - Received a grant to perform preliminary engineering and development of cost estimates to replace the Bartlett Street bridge near the intersection of Bartlett and Cate Streets
 - Project includes repairs to the [Maplewood Avenue Bridge](#) culvert and other safety upgrades with work started in the Summer of 2024 and continuing into Spring of 2025
- Facilities
 - Construction of a new pump house and chemical building at the [Outdoor Pool](#) to house the pool's mechanical systems and piping
 - Completed the second year of the City's \$6.3 million, 3-year upgrade to the [Hanover Parking Garage](#) focusing on Levels 2 and 3 as well as the Hanover Street Main Entry/Exit
 - Refurbished the British Telephone Box in-house and repositioned at Portsmouth Historical Society
- Parking & Transportation
 - [The 10-year Parking Utilization Study](#) sought to update and modernize the governing principles adopted in 2012 with the revised parking principles accepted by the City Council in February 2024
- Think Blue Public Outreach and Engagement
 - Hosted Household Hazardous Waste Day in Spring and Fall
 - Collins Well #2 was drilled and constructed
 - Initiated Greenland Well Treatment Pilot
 - [Fats, Oils, and Grease \(FOG\) Program](#)
 - [DPW Water Service Lines Inventory](#)
- Water/Wastewater/Stormwater
 - Replaced the valves on both sides of Little Bay and tapped the existing water main to allow for future connection of a third water line
 - Municipal Separate Storm Sewer Systems (MS4) Compliance Water/Wastewater/Stormwater separation projects completed included [Mechanic Street Pumping Station](#) and [Marjorie Street Pumping Station](#)
- Additional Capital Projects
 - [Route 1 Bypass-Coakley Road Intersection Project](#)
 - Work continued utilizing the [Pavement Condition Management Program](#) - projects include Nixon, Little Harbor, Court, Banfield, Mirona, Pannaway, and portions of Coolidge, Taft and Grant
 - Raised Pierce Island Road to provide consistent access to the Pierce Island Wastewater Treatment Facility using grant funding through the Pierce Island Road Resiliency Project
 - [Interstate 95 Sound Barriers](#) NHDOT awarded the Portsmouth soundwall project to Northeast Earth Mechanics, LLC and the contract was approved by Governor and Executive Council

Economic Development

- Created an [employer toolkit video series](#) for Seacoast employers with SOHO Creative

Emergency Management

- Completed City's Hazard Mitigation Plan, approved by the Federal Emergency Management Agency, reviewed by NH Homeland Security and Emergency Management (HSEM), and adopted by the City Council
- Completed a review and update of the Local Emergency Management Plan by all City Departments, approved by NH HSEM and adopted by the City Council

Fire Department

- Purchased, trained, and placed into service 50 new Self-Contained Breathing Apparatus (SCBA)

Health

- Secured funding for 100 free lead kits for homeowners
- [Community Health Needs Assessment](#) completed
- City Council [allocated ARPA funds](#) for emergency shelter accommodations

Information Technology (IT)

- Upgraded aging IT infrastructure across departments
- In response to feedback from the Cybersecurity & Infrastructure Security Agency (CISA), work was done to physically secure network equipment in multiple locations across the City and implemented quarterly cybersecurity training

Planning & Sustainability

- [Portsmouth Energy Advisory Committee \(PEAC\)](#) launched the [Portsmouth Community Power \(PCP\)](#) initiative
- [Community Housing Department](#) completed a review of available sites for housing with the Land Use Committee, Portsmouth Housing Authority, and other stakeholders

Recreation

- Opened a new 20,000 square foot [Skatepark](#) with lights and parking area which is also the main access point to the NH Seacoast Greenway
- Expanded Summer Camp capacities to accommodate up to 80 children per week for Camp Funstuff and 30 children per week for Sports Camp with 730 children cared for between both programs in Summer 2024
- Preliminary phases of the [South Mill Pond Playground Improvement Project](#) were initiated with the intent to design a playground that meets and exceeds the latest Americans with Disabilities Act and Universal Design standards



FY24 City Awards



The Arbor Day Foundation awarded the City of Portsmouth's Department of Public Works with its 25th Tree City USA designation



The Arbor Day Foundation awarded the City of Portsmouth's Department of Public Works' Parks and Greenery group its 5th Tree Growth Award

Tourism Accolades

- [Wanderlust Magazine \(July 25, 2024\)](#)
- [Fortune, Top 10 Best Cities for Families \(July 23, 2024\)](#)
- [Newsday, Destinations That Hit Their Absolute Peak in Summer \(June 28, 2024\)](#)
- [CBS, Take a Trip Back in Time \(April 30, 2024\)](#)
- [WMUR, Sea-Level Rise Sensors \(February 29, 2024\)](#)
- [WCVB-TV, Seaside City of Portsmouth is a Perfect Destination \(March, 2024\)](#)
- [Yankee/NewEngland.com, Best River Towns, Best Places to Live in New England \(March, 2024\)](#)
- [Travel + Leisure, 10 Best Places to Live on the East Coast \(January, 2024\)](#)
- [Harvard Magazine, No Sleepy Coastal Town \(December, 2023\)](#)
- [House Beautiful, 4th Most Festive Christmas Town in the US \(September, 2023\)](#)
- [Smithsonian Magazine, Best Historic Small Towns \(July, 2023\)](#)
- [World Atlas 8 Top-Rated Small Towns in NH \(December, 2023\)](#)
- [TheTravel.com 10 Cozy Towns in NH to Retire To \(November, 2023\)](#)

FY24 Spotlight: Portsmouth's 400th Anniversary!

Portsmouth NH 400 was created to celebrate Portsmouth's rich history, its challenges, successes, and innovations.

- Celebrate the present – the people, events, art, culture, buildings.
- Create, with multiple organizations and community members, vibrant, immersive, and engaging programming that tells the stories from the past to the present and which are relevant and meaningful to people today.
- Engage, educate, and inspire today's citizens of all ages to become new community leaders.
- Engage and promote local artists, historians, and diverse communities.
- Preserve and encourage our culture of community pride that is collaborative and future-oriented to develop meaningful, visible, and permanent legacy programs.



For the full story, visit:
PortsmouthNH400.org

400+

Volunteers

16,000

Volunteer hours

1,000s

Of event attendees

400

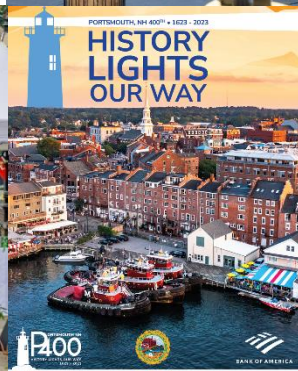
Trees planted

8

Legacy projects

5

Signature events



FY24 Spotlight: Portsmouth's 400th Anniversary!

Engage in Your City Government

The City of Portsmouth offers several opportunities for Portsmouth Citizens to engage in its local government processes.

Public Input Sessions

- [City Council Public Comment Sessions](#)
- Boards, Commissions, and Committees Public Input Opportunities
- Planning and Public Works Public Input Sessions
- Master Planning Process
- Neighborhood Outreach Forum
- Economic Development ([Sister and Friends Cities Programs](#))

Annual Budget Process

- Budget Public Hearings (Police & Fire Commissions & School Board)
- Budget Public Hearing (City Council)
- Listening Sessions during City Council Budget Work Sessions

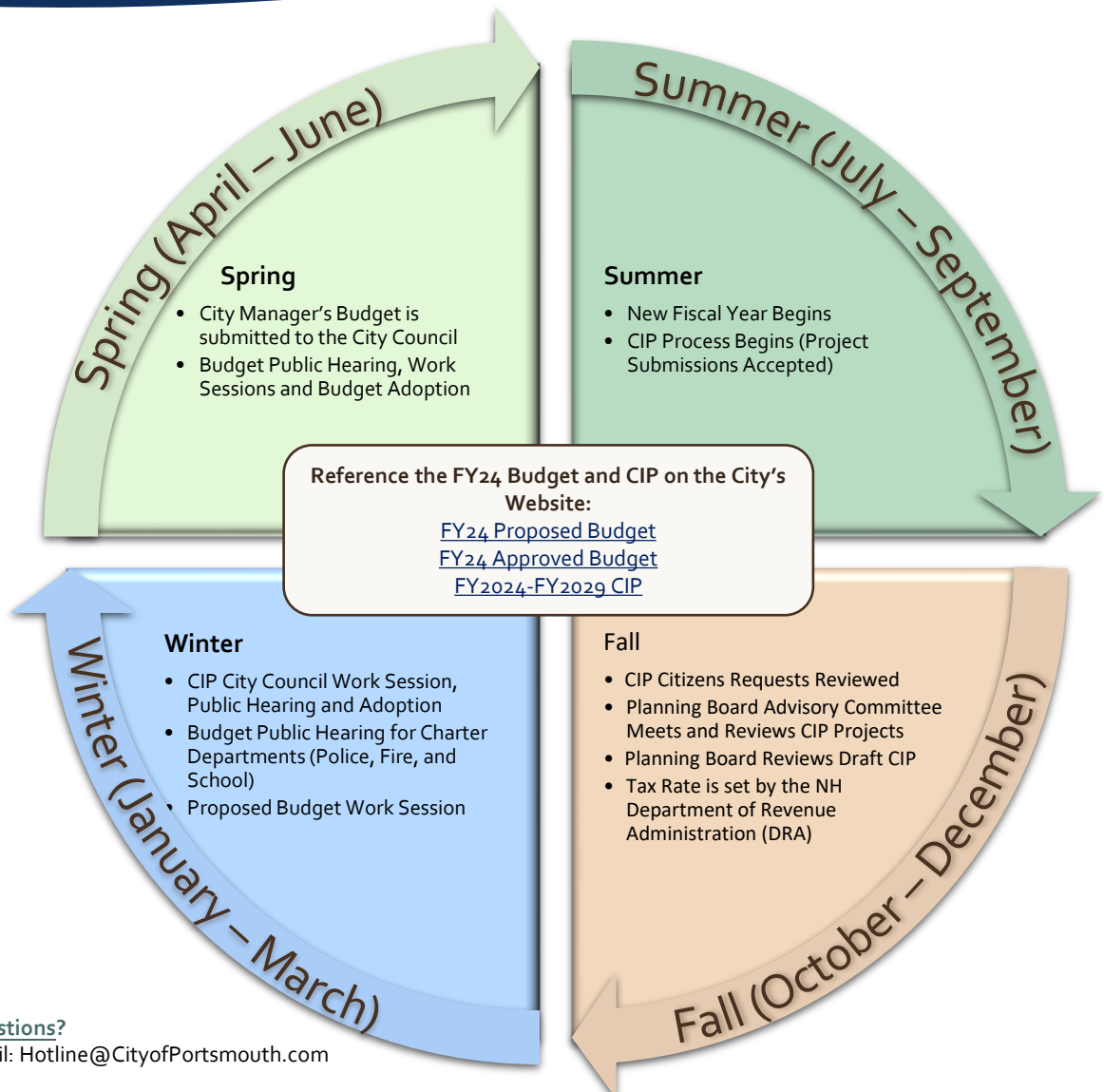
Capital Improvement Plan (CIP) Process

- [Citizen Project Request Opportunities](#)
- Citizen Request Projects Subcommittee Meeting
- CIP Public Comments (Planning Board)
- CIP Public Hearing (City Council)

Boards, Commissions, Committees

- [Citywide Neighborhood Committee](#)
- [Citizen Advisory Committee \(for Community Development Block Grant funds\)](#)
- [Appointed Positions](#) (Boards, Commissions, and Committees)
- [Elected Positions](#) (Police Commission, Fire Commission, School Board)

FY24 Budget Process



Questions?

Email: Hotline@CityofPortsmouth.com

Portsmouth at a Glance...



Quick Facts

City Government

- Incorporated: 1849
- Form of Government: Council-Manager

Location

- County: Rockingham
- State: New Hampshire
- Tourism Region: Seacoast
- Planning Commission: Rockingham

Land

- Land Area¹: 16.8 square miles (15.7 square miles of land & 1.1 square miles of water)
- Public Parks & Playgrounds¹: 200+ acres
- Wetlands²: 3,538 acres

Driving Distance to Selected Cities

- [Manchester, NH: 45 miles](#)
- [Portland, ME: 53 miles](#)
- [Boston, MA: 56 miles](#)
- [Concord, NH: 59 miles](#)
- [New York City, NY: 265 miles](#)

Public Transportation

[COAST Bus Services](#)

- Operates a fixed-route bus service as well as on-demand service for ADA riders
- Operates a free weekend service around the Downtown on the Vintage Christmas Trolley for the month of December
- Operates the City's Senior Transportation Services

[Wildcat Transit](#)

- Provides bus service between downtown Portsmouth and the University of New Hampshire

[Amtrak Passenger Rail Link Service](#)

- Available between Portland, ME and Boston, MA with stops in Dover, Exeter, and Durham, NH

Nearest Airports

- [Pease International Airport](#)
- [Manchester-Boston Regional Airport](#)
- [Portland International Jetport](#)
- [Logan International Airport](#)

City Assets, Infrastructure, and Operating Indicators

Settled in 1623, Portsmouth is the nation's 3rd-oldest city with a rich heritage as a working seaport and the home of the State's only deep-water port. Portsmouth lies along the Piscataqua River, which divides New Hampshire and Maine. It is a regional economic and cultural hub located 56 miles north of Boston, Massachusetts and 53 miles south of Portland, Maine.

Public Safety – Police

- Police Stations: 1
- Police Vehicles: 38
- Police Canines: 2

Public Safety – Fire and Rescue

- Fire Stations: 3
- Fire Engines: 4
- Tower Truck: 2
- Heavy Rescue: 1
- Ambulance: 3
- Forestry Pick Up: 1
- Rigid Hull Inflatable Boat: 1
- Zodiac Boat: 1

Education

- [High School Buildings](#): 1
- [Middle School Buildings](#): 1
- Elementary School Buildings: 3

Public Works

- Miles of Streets (excluding Pease): 105
- Miles of Sidewalks: 84
- Bridges: 15
- City Owned Facilities Maintained: 9

Eco Municipality Assets

- [Recycling Centers](#): 1
- LED Streetlights: 1,600
- [Electric Charging Stations](#): 5 (7 plugs)
- Solar Panel Arrays: 2
- City Biodiesel Vehicles: 82
- City Electric Vehicles: 2
- City Open Space: 91 undeveloped parcels (914 acres)

Culture and Recreation

- [Libraries](#): 1
- Community Centers: 4
- [Senior Centers](#): 1
- Boat Dock Facilities: 2
- Swimming Pools: 3
- Tennis Courts: 6
- Pickelball Courts: 8

Parks, Playgrounds, and Cemeteries

- Playgrounds, Parks, and Ballfields: 26
- [Cemeteries](#) and [Burial Grounds](#): 6
- [Adopt a Spot Gardens](#): 48
- Greenspace Maintained: 80+ acres

Parking and Transportation

- Parking Garages: 2
- Garage Spaces: 1,491
 - [Foundry Place](#): 600
 - [Hanover](#): 891
- Metered Street Parking Spots: 671
- City Owned Parking Lots: 12
- City Owned Free Lots: 4 lots (386 spaces)
- Private Parking Lots with City Agreements: 2 lots (78 spaces)
- Bike Racks: 39
- Public Transit Options: 3

Water System

- Miles of Water Mains: 192
- Service Connections: 8,717
- Storage Capacity in Gallons (millions of gallons): 11
- Maximum Daily Capacity of Plant (millions of gallons): 4
- Water Balance (production v. billed and known use) – percentage: 3.5%
- Fire Hydrants: 1,035
- Precipitation for FY: 51.00 inches

Sewage System

- Miles of Sanitary Sewers: 107
- Treatment Plants: 2
- Service Connections: 6,813
- Maximum Daily Capacity of Treatment (millions of gallons): 25.3

1. Source: Taintor & Associates, Existing Conditions, 2004

2. Source: City of Portsmouth, 2003 Wetlands Inventory

Economic Indicators



Total Valuation Before Exemptions

TY23 (FY24)

	Valuation	Parcels
Commercial *	\$ 2,772,708,906	1,418
Residential **	\$ 3,838,714,972	7,637
Totals	\$6,611,423,932	9,055

* Includes Pease Non-Airport and Utilities, does not include Pease Airport

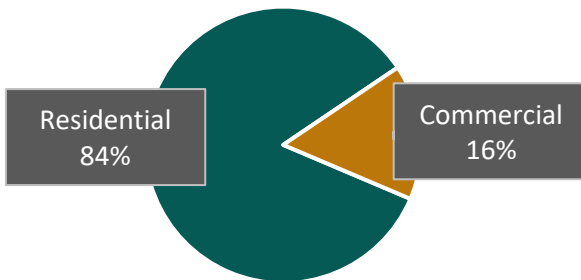
** Includes single family, condos, multi-family units, mobile homes, and vacant land

Residential vs. Commercial

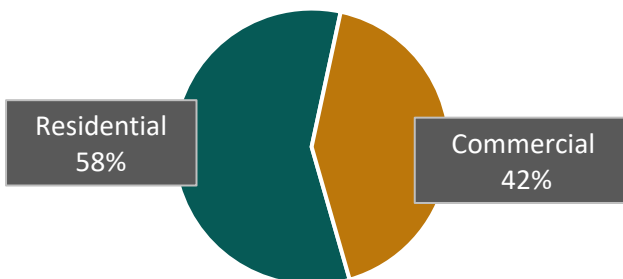
Important Numbers

- Residential Properties** make up **84%** (by count) of the properties in Portsmouth and pay **58%** of the tax burden.
- Commercial Properties** make up **16%** (by count) of the properties in Portsmouth and pay **42%** of the tax burden.

Residential vs. Commercial Properties by Percent of Taxable Parcel Count TY 2023 (FY2024)



Residential vs. Commercial Properties by Percent of Total Assessed Value TY 2023 (FY2024)



FY = Fiscal Year July 1st to June 30th
 TY = Tax Year April 1st to March 30th

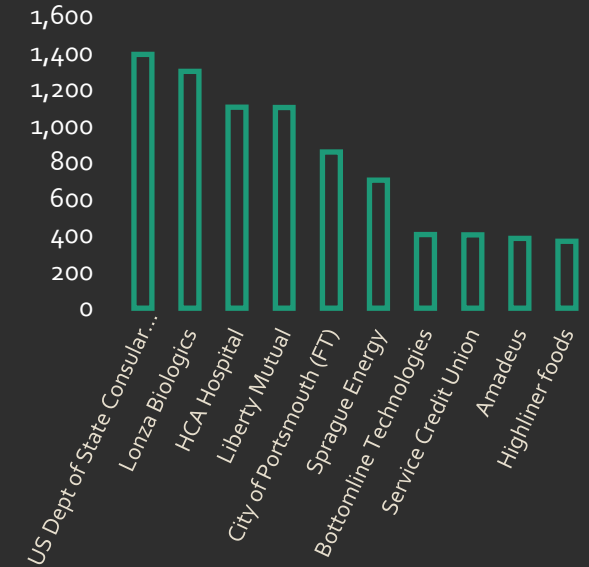


Median Property Values

Single Family - \$482,000
 Commercial Improved - \$582,600

Largest Portsmouth Employers

Fiscal Year 2024

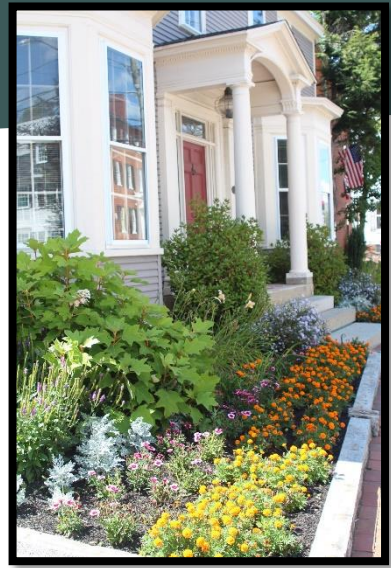


Top 5 Taxpayers FY2024

The top 5 Taxpayers in Portsmouth paid 5.73% of the City's taxes in FY2024.

Company	Business Type	Percentage of Total Taxable Property
Public Service of New Hampshire	Utility	1.82%
HCA Health Services	Medical Building	1.43%
Arbor View & The Pines LLC	Apartment Complex	0.94%
Cate Street Development LLC	Mixed Use	0.83%
Northern Utilities Inc.	Utility	0.71%

Property Tax Rate



Tax Rate Fiscal Year 2024
(Tax Year 2023)
\$16.13 (per \$1,000)

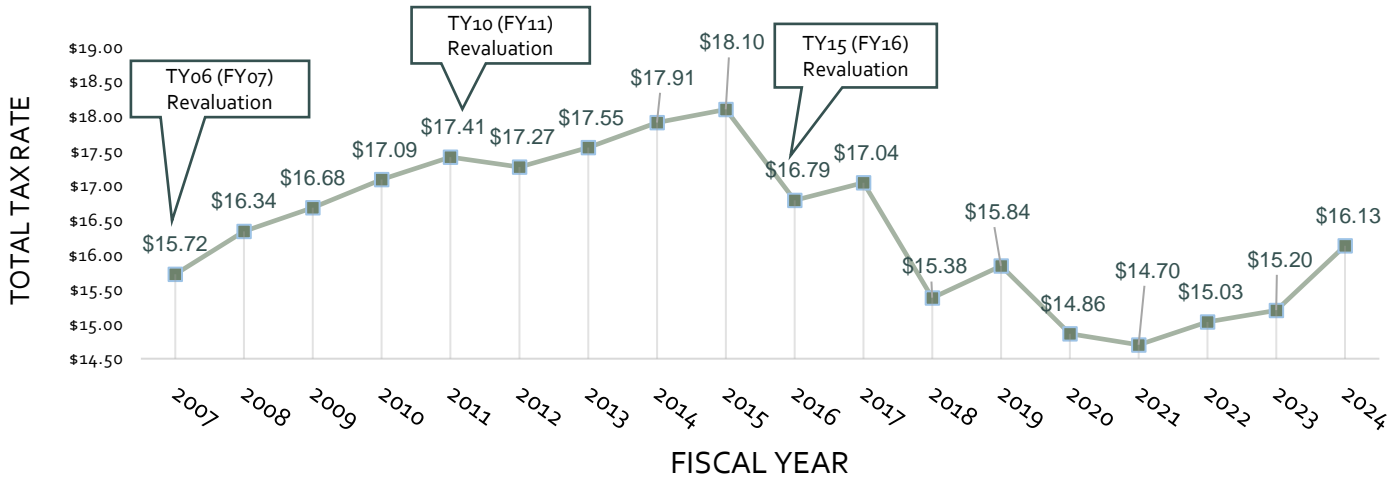
Municipal - \$7.17

County - \$0.85

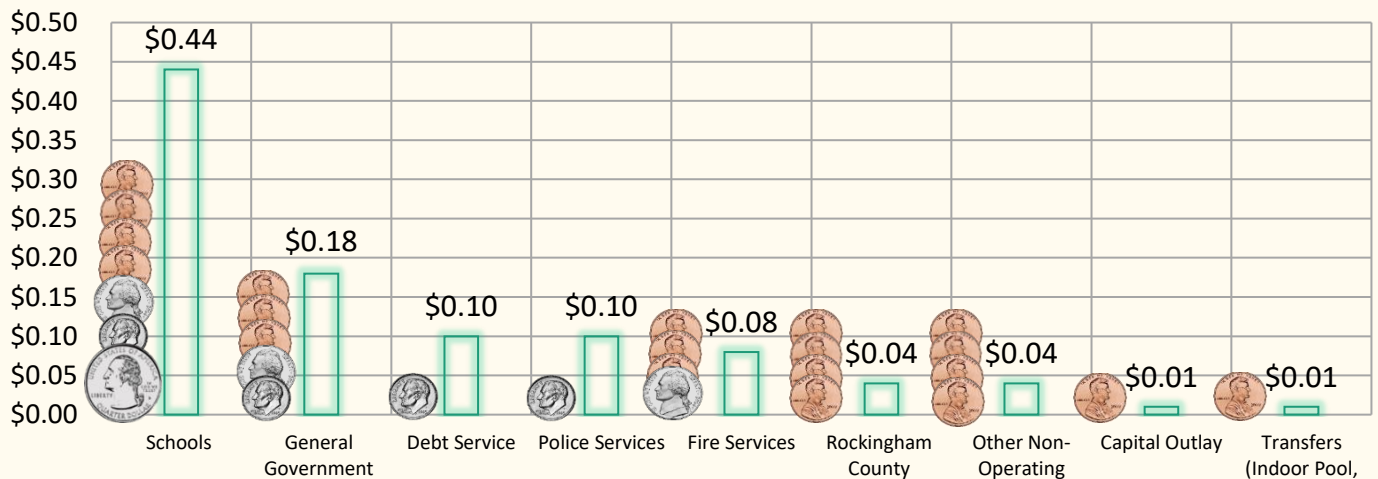
Local Education - \$6.33

State Education - \$1.78

Portsmouth, NH Total Tax Rate
 Tax Years 2006-2023 (Fiscal Years 2007-2024)



Where does \$1 of your Property Tax Money Go?

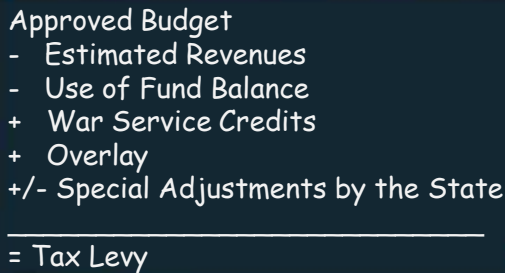


Property Tax Levy, Assessments, and Equalization

Property Tax Levy and Taxes

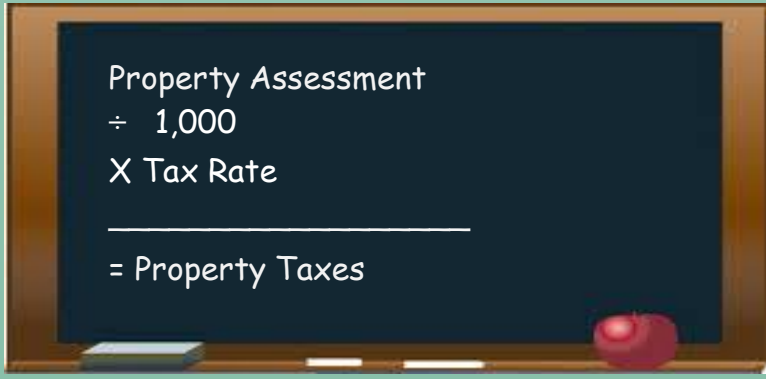
The City Council annually adopts a budget that consists of program-related operating and non-operating appropriations. Estimated Revenues (from fees/fines/etc.) are then subtracted from the annual appropriations resulting in a Tax Levy.

The Tax Levy is the amount of money that the City must raise through property taxes.



Approved Budget
- Estimated Revenues
- Use of Fund Balance
+ War Service Credits
+ Overlay
+/- Special Adjustments by the State
= Tax Levy

The Tax Rate is set annually in the fall by the State of New Hampshire. Once the tax rate is set, the formula to calculate what your property tax is as follows:



Property Assessment
÷ 1,000
X Tax Rate
= Property Taxes

Property Assessments

Property Assessments, a value placed on each property in the City, are based on the market value and qualified comparable sales for each individual property, as well as other contributing factors, as of April 1st of each year. The State of New Hampshire relies on the assessment of values of properties at market value to attain fairness and equality to ensure the tax burden is proportionally spread across all property types.

Equalized Tax Rate

What is Equalization?

Each year the New Hampshire State Department of Revenue Administration (DRA) performs a statistical study of all of the State's municipal valuations. The study utilizes sales data to adjust all municipalities to 100% market value. This process is called equalization.

How is Equalization Used?

The State of New Hampshire utilizes the Equalized Value of each Town or City in order to proportionately share common tax burdens such as County Taxes and State Education Property Tax.

Look up your property's assessed value online at:
<http://gis.vgsi.com/portsmouthnh/>

Revaluation

What is a revaluation? – In New Hampshire, a revaluation is a process to assess all properties in a municipality to their full market value in order to re-apportion the tax levy fairly among the taxpayers.

How often does a revaluation occur? – Per New Hampshire law (RSA 75:8-a), "a municipality must perform a valuation every 5-years for all properties in the municipality's boundaries." (New Hampshire Municipal Association)

Who performs the property assessments? – The Assessor's Office is responsible for determining the market value of all real property subject to taxation within its jurisdiction. The Assessing staff in conjunction with contracted employees perform the property assessment of all properties.

Does the City raise additional money from the revaluation? – Zero. There is NO additional tax money raised from a revaluation of the City. The tax rate is set based on the City's Budget (as well as State Education & County Apportionment). The State sets the tax rate based on the budget's tax levy.

More Revaluation related questions? Please check out

<https://files.cityofportsmouth.com/files/assessors/RevaluationFAQ.pdf>



Property Tax Timeline & Tax Relief

Important Dates

Tax Year

April 1 – March 30



Tax Assessment Date

April 1st

Tax assessments are adjusted annually based upon property inventory as of April 1st per NH RSA 75:8

City Fiscal Year

July 1 – June 30

Tax Rate

Tax rate is set by the [New Hampshire Department of Revenue Administration \(DRA\)](#) in late Fall

Property Tax Bill

Tax bill payment options:

- City Hall (in the Tax Office)
- Online
- Pay by Phone
- Checks by Mail
- Drop Box located in front of City Hall

Tax Bill Due Dates

- **December** - First ½ of the total property tax bill
- **June** - Second ½ of the total property tax bill

Partial payments and pre-payments are accepted and encouraged. Contact the Tax Office at 603-610-7244 for more information.

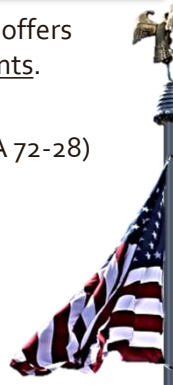


Paperless billing is now available for Water/ Sewer and Tax payments.
www.cityofportsmouth/city/pay-my-bill.

Tax Relief

Allowable by State Statute, the City of Portsmouth offers numerous options for Tax Relief for qualified residents.

- Veteran's Exemption
 - Standard & Optional Veteran's Tax Credit (RSA 72-28)
 - OR- All Veteran's Tax Credit (RSA 72:28-b)
 - Surviving Spouse (RSA 72:29-a)
 - Optional Tax Credit for Combat Service (RSA 72:28-c)
 - Tax Credit for Service-Connected Total Disability (RSA 72:35)
 - Certain Disabled Veterans – Total Exemption (RSA 72:36)
- Elderly and Disabled Exemptions
 - Elderly or Disabled Tax Deferral (RSA 72:38-a)
 - Elderly Tax Exemption
 - Disabled Tax Exemption
 - Blind Tax Exemptions
 - Exemption for Improvements to Assist Persons with Disabilities
- Religious and Charitable Exemptions
- Solar Energy Systems Exemption
- Wind Powered Energy Systems Exemption
- Financial Hardship Application



Abatement Process

Property owners who wish to contest their assessments may request a review of their value by filing an abatement application with the Assessing Department.

- ✓ March 1st is the deadline to file the abatement application with the Assessor. The application can be found online. The Assessing Department must issue a response no later than July 1st.
- ✓ Property owners wishing to appeal the Assessing Department's decision can file with either the NH Board of Tax and Land Appeals or Rockingham County Superior Court by September 1st.

Contact the Assessor's Office for more information:

Phone: [603-610-7249](tel:603-610-7249)

Online: <https://www.cityofportsmouth.com/assessors>

FY24 Financial Highlights



Nathan Lunney
Deputy City Manager –
Finance & Administration
ndlunney@cityofportsmouth.com

I am pleased to present the City of Portsmouth's Popular Annual Financial Report (PAFR) for the Fiscal Year ended June 30, 2024. The PAFR is intended to increase knowledge throughout the community of Portsmouth's financial condition using a readily accessible and easily understandable report.

This report extracts and summarizes financial information from the Annual Comprehensive Financial Report (ACFR) that may be most informative to the citizens of Portsmouth, and other interested parties, and is not intended to conform to Generally Accepted Accounting Principles (GAAP).

The PAFR provides pertinent information regarding expenditures, revenues, fund balance, debt service, and capital asset investments for Governmental and Proprietary Funds. It does not include information on all City Funds or Component Units.

The Annual Comprehensive Financial Report (ACFR) is presented in accordance with Generally Accepted Accounting Principles (GAAP) and includes additional financial statements, note disclosures and required supplementary information, City initiatives, accomplishments, and statistical data. The complete audited ACFR is available on the City of Portsmouth's website at <http://files.cityofportsmouth.com/finance/FY24/ACFR24.pdf>.

The interactive PAFR is available on the City's website which offers the ability to "click" on various links identified throughout this publication. Please visit <http://files.cityofportsmouth.com/finance/FY24/PAFR24.pdf>.

It is my hope that you find this report helpful and easy to read. I welcome any questions, comments, and suggestions regarding this document.

Government Finance Officers Association (GFOA) Awards



Certificate of Achievement
Financial Reporting

Certificate of Achievement for Excellence in Financial Reporting

GFOA awarded a Certificate of Achievement for Excellence in Financial Reporting (COA) to the City of Portsmouth for its Annual Comprehensive Financial Report (ACFR) for Fiscal Year ended June 30, 2023. The City has received a total of thirty-one (31) COA awards for the fiscal years ending June 30, 1988 and 1989, and the twenty-nine (29) consecutive fiscal years 1995 to 2023.



Award for Outstanding Achievement
Popular Annual Financial Reporting

Award for Outstanding Achievement in Popular Annual Financial Reporting

GFOA awarded the City for Outstanding Achievement in Popular Annual Financial Reporting (PAFR Award) for its Fiscal Year ended June 30, 2023 publication. The City has received a total of seven (7) consecutive PAFR Awards.



Distinguished Budget
Award

Distinguished Budget Presentation Award

GFOA awarded the City the Distinguished Budget Presentation Award for its Fiscal Year beginning July 1, 2024 (FY25) budget document. The City has received a total of nineteen (19) consecutive Budget Awards.



Triple Crown

GFOA awarded the City a Triple Crown medallion for receiving all three GFOA Awards (ACFR, PAFR, and Budget Award) for Fiscal Years 2019, 2020, 2021, 2022, and 2023.

Helpful Financial Terms

Abatement	An official reduction or elimination of one's assessed valuation after completion of the original assessed value
Accrual Basis of Accounting	A basis of accounting in which revenues are recognized in the accounting period in which they are earned, and expenses are recognized in the accounting period in which they are incurred
Appropriation	An authorization granted by a legislative body to make expenditures and incur obligations for specific purpose
Assessed Valuation	The fair market value placed upon real and personal property for the levying of property taxes
Bond Premium	An amount that the underwriter provides to the issuer at the closing of bonds in addition to the principal (par) amount borrowed
Business-Type or Enterprise Funds	A type of fund used in governmental accounting to account for activities that provide goods or services to the public for a fee that is meant to make the entity self-sustaining
Capital Assets	Land, improvements to land, easements, buildings, building improvements, vehicles, machinery, equipment, and all other tangible or intangible assets that are used in operations and that have initial useful lives extending beyond a single reporting period
Deferred Inflows and Outflows of Resources	Represents acquisition (inflows) and consumption (outflows) that are applicable to future reporting periods
Fund Balance	The excess of an entity's assets over its liabilities also known as excess revenues over expenditures or net assets – Fund Balance can be further segmented as follows: <ul style="list-style-type: none"> • Non-spendable – Represents fund balance not available to be spent or legally required to be maintained intact • Restricted – Represents fund balance that is restricted by creditors, grantors, contributors, or laws and regulations of other governments • Committed – Self-imposed limitations set in place prior to the end of the period • Assigned – Represents intentional constraints placed on resources utilized in subsequent periods for capital outlay projects and non-recurring expenditures • Unassigned – Represents fund balance that is available for any purpose
General Fund	Chief operating fund of the government
Net Position	Reflects the City's net worth $\text{Net Position} = \text{Assets (+)} \text{ Deferred Outflows (-)} \text{ Liabilities (-)} \text{ Deferred Inflows}$
Overlay	An additional assessment amount to fund potential tax abatements
State Revolving Loan Fund (SRF)	A fund administered by the State for the purpose of providing low-interest loans for investments in water and sanitation infrastructure

The City's financial activities in total are made up of two classifications:

GOVERNMENTAL FUNDS:

- General Fund – accounts for all general operating expenditures and revenues and is the City's largest fund, primarily funded from property taxes
- Special Revenue Funds – proceeds of specific revenue sources that are restricted for a specific purpose
- Capital Funds – capital projects for City infrastructure improvements
- Debt Service Funds – principal and interest for a special assessment bond
- Permanent Funds – resources that are legally restricted to the extent that only earnings (not principal) may be used for purposes that support the reporting government's programs

BUSINESS-TYPE OR ENTERPRISE FUNDS:

- Water Fund – Production, delivery, and storage of safe water supported primarily with user fees
- Sewer Fund – Collection, transportation, and treatment of wastewater supported primarily with user fees

Financial Position - Statement of Net Position

Net Position \$308.0 Million

Statement of Net Position presents information on all City funds' assets and liabilities, deferred inflow/outflows of resources, with the difference reported as net position. Over time, increases or decreases in net position may serve as a useful indicator as to whether the City's financial position is improving or deteriorating.

At the close of the fiscal year, the City's total net position of \$308.0 million represents an increase of \$14.1 million or 4.8% from FY23, primarily driven by increased net investment in capital assets.

City of Portsmouth, NH Statement of Net Position (in Thousands)

	Governmental Activities		Business-Type Activities		Total		Total Percentage Change 2023-2024
	2024	2023	2024	2023	2024	2023	
Current and other assets	\$ 143,258	\$ 135,029	\$ 95,234	\$ 91,868	\$ 238,492	\$ 226,897	5.1%
Capital assets	283,125	270,153	271,917	262,699	555,042	532,852	4.2%
Total assets	426,383	405,182	367,151	354,567	793,534	759,749	4.4%
Deferred outflows of resources	22,082	25,890	1,315	1,447	23,397	27,337	-14.4%
Total assets and deferred outflows	\$ 448,465	\$ 431,072	\$ 368,466	\$ 356,014	\$ 816,931	\$ 787,086	3.8%
Long-term liabilities	\$ 251,449	\$ 244,339	\$ 177,190	\$ 171,734	\$ 428,639	\$ 416,073	3.0%
Other liabilities	29,194	27,705	13,879	9,898	43,073	37,603	14.5%
Total liabilities	280,643	272,044	191,069	181,632	471,712	453,676	4.0%
Deferred inflows of resources	8,940	9,900	28,319	29,611	37,259	39,511	-5.7%
Net position:							
Net investment in capital assets	171,558	163,203	122,487	114,949	294,045	278,152	5.7%
Restricted	32,046	23,588	-	-	32,046	23,588	35.9%
Unrestricted	(44,722)	(37,663)	26,591	29,822	(18,131)	(7,841)	131.2%
Total net position	\$ 158,882	\$ 149,128	\$ 149,078	\$ 144,771	\$ 307,960	\$ 293,899	4.8%

Net Investment in Capital Assets is the largest portion of net position and reflects our investment in capital assets (e.g. land, buildings, machinery and equipment), less any related debt used to acquire the assets that is still outstanding. As of year-end, net investment in capital assets is \$294.0 million, an increase of \$15.9 million from FY23. These capital assets are used to provide services to citizens.

Restricted Net Position of \$32.0 million represents 10.4% of resources that are subject to external restrictions on how they may be used.

Unrestricted Net Position is the remaining amount of net position not restricted for a specific purpose. There are two reporting mandates from Governmental Accounting Standards Board (GASB): 1) Net pension liability representing the City's share of the New Hampshire Retirement System's unfunded liability and 2) Other Post-Employment Benefits (OPEB) liabilities. This resulted in an ending balance in Unrestricted Net Position of a negative \$18.1 million. [Detailed information regarding these liabilities can be found in notes 21 and 22 (pages 91-102) of the City of Portsmouth's ACFR for the Fiscal Year ended June 30, 2024.]

Financial Results – Changes in Net Position

City of Portsmouth, NH Statement of Changes in Net Position (In Thousands)

	Governmental Activities		Business-Type Activities		Total		Total % Change
	2024	2023	2024	2023	2024	2023	23-24
REVENUES							
Program Revenues:							
Charges for Services	\$ 26,290	\$ 24,423	\$ 29,164	\$ 28,901	\$ 55,454	\$ 53,324	4.0%
Operating Grants and Contributions	18,061	20,998	40	-	18,101	20,998	-13.8%
Capital Grants and Contributions	5,191	10,583	4,113	4,731	9,304	15,314	-39.2%
General Revenues:							
Property Taxes	101,822	99,371	-	-	101,822	99,371	2.5%
Interest on Taxes	146	147	-	-	146	147	-0.7%
Grants and Contributions (not	2,081	1,939	-	-	2,081	1,939	7.3%
Investment Income	4,757	3,087	1,813	1,305	6,570	4,392	49.6%
Loss on sale of capital assets	-	-	-	(13)	-	(13)	-100.0%
Other	485	938	-	-	485	938	-48.3%
Total Revenues	158,833	161,486	35,130	34,924	193,963	196,410	-1.2%
EXPENSES							
General Government	19,487	15,741	-	-	19,487	15,741	23.8%
Public Safety	26,452	24,021	-	-	26,452	24,021	10.1%
Education	70,789	65,178	-	-	70,789	65,178	8.6%
Public Works	24,568	24,231	-	-	24,568	24,231	1.4%
Health and Human Services	1,065	1,003	-	-	1,065	1,003	6.2%
Culture and Recreation	6,476	6,072	-	-	6,476	6,072	6.7%
Community Development	599	970	-	-	599	970	-38.2%
Interest on Long-Term Debt	262	2,950	-	-	262	2,950	-91.1%
Water Operations	-	-	10,448	10,298	10,448	10,298	1.5%
Sewer Operations	-	-	19,756	19,859	19,756	19,859	-0.5%
Total Expenses	149,698	140,166	30,204	30,157	179,902	170,323	5.6%
Change in net position before transfers and special items	9,135	21,320	4,926	4,767	14,061	26,087	-46.1%
Transfer in(out)	619	452	(619)	(452)	-	-	0.0%
Special items	-	-	-	-	-	-	0.0%
Change in net position	9,754	21,772	4,307	4,315	14,061	26,087	-46.1%
Net Position - beginning of year	149,128	127,356	144,771	140,456	293,899	267,812	
NET POSITION - END OF YEAR	\$ 158,882	\$ 149,128	\$ 149,078	\$ 144,771	\$ 307,960	\$ 293,899	4.8%

Statement of Changes in Net Position presents revenues and expenses for the City as a whole and compares the changes in net position for the current and prior fiscal year.

FY24 Total Revenues of \$194.0 Million



Down \$2.4M or 1.3% from FY23

FY24 Total Expenses of \$179.9 Million



Up \$9.6M or 5.6% from FY23

General Fund Revenues

Where does the money come from to fund the General Fund Budget?



Property Taxes
72.84%



Licenses & Permits
6.45%



Intergovernmental
7.21%



Charges for Services
4.45%



Investment Income
2.12%



Interest on Taxes
0.10%



Fines & Costs
0.99%



Other Revenues
0.40%



Other Financing Sources
1.34%

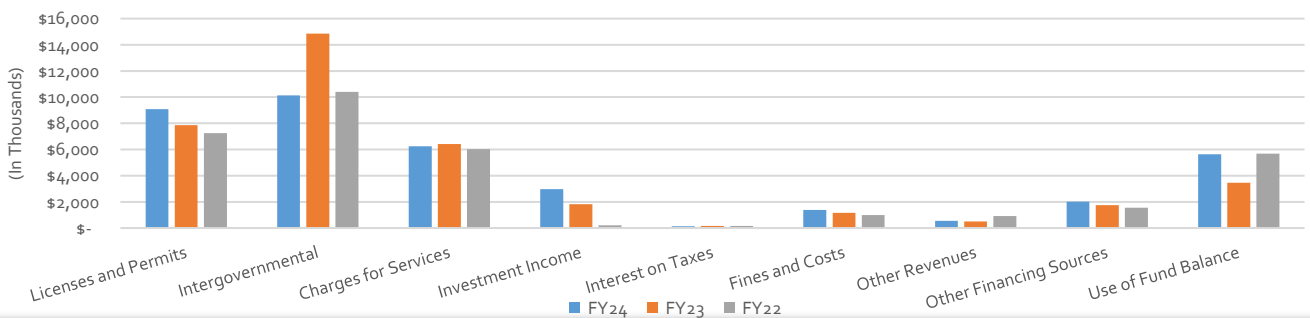


Use of Fund Balance
4.10%

General Fund activities are financed by revenues generated from local property taxes, state shared revenues, and other local sources. Actual revenues for FY24, FY23, and FY22 are reported below.

Revenues	Actual FY24	Actual FY23	Actual FY22
Property taxes	\$ 102,423,881	\$ 99,298,398	\$ 95,437,728
Licenses and permits			
Motor Vehicles Permits	5,564,555	5,345,495	5,000,874
Building Permits	2,550,420	1,422,567	1,266,473
Cable Franchise Fee	360,000	360,000	360,000
Other Licenses and Permits	597,512	728,453	631,257
Intergovernmental			
School Building Aid from State	740,974	1,757,196	1,757,196
Rooms and Meals Tax from State	2,080,659	2,563,046	1,639,197
Highway Block Grant from State	433,279	441,672	426,293
School Tuition	6,887,356	6,810,047	6,577,471
Adequate Education Grant	-	3,285,215	-
Charges for services			
PDA Airport District	2,856,604	3,052,158	2,825,878
Police Outside Detail	347,427	317,721	413,712
Ambulance Fees	1,276,831	1,198,254	860,223
Net Parking Related Revenue	1,046,790	1,203,647	1,366,294
Recreation Department	459,602	388,564	218,351
Other Charges for services	266,269	245,309	337,554
Investment Income	2,976,173	1,812,447	201,845
Interest on Taxes	145,957	147,262	168,752
Fines and Costs	1,389,423	1,159,490	986,490
Other Revenues	556,421	493,145	907,155
Other Financing Sources			
Bond Premium	131,519	4,763	132,611
Transfer In	1,877,709	1,744,576	1,421,368
Use of Fund Balance	5,640,000	3,450,000	5,696,000
Total Revenues	\$ 140,609,361	\$ 137,229,425	\$ 128,632,721

Actual Revenues Comparison
(Less Property Taxes)
(In Thousands)



General Fund Expenditures

How is the money spent to fund General Fund Services?

Revenues collected from property taxes, state shared revenues, and other local revenues are used to fund the General Fund expenditures only. Actual Expenditures for FY24, FY23, and FY22 are reported below.

Expenditures	Actual FY24	Actual FY23	Actual FY22
Operating Budget			
General Government	\$ 25,461,602	\$ 23,271,336	\$ 20,968,405
Police Department	13,719,287	12,646,674	12,261,722
Fire Department	11,202,463	10,226,092	9,812,552
School Department	60,640,374	57,928,462	53,547,130
Transfers	920,096	783,043	327,486
<i>Total Operating</i>	\$ 111,943,822	\$ 104,855,607	\$ 96,917,295
Non-Operating			
Debt Service	13,175,076	13,712,906	13,639,841
Rockingham County Tax	5,679,311	5,546,962	5,677,887
Capital Outlay	1,820,000	985,000	1,080,000
Other Non-Operating	5,418,704	4,870,510	4,688,498
<i>Total Non-Operating</i>	\$ 26,093,091	\$ 25,115,378	\$ 25,086,226
Total Expenditures	\$138,036,913	\$129,970,985	\$122,003,521

Operating Expenditures represent 81.1% of the total Expenditures



General Government
18.5%



Police Department
9.9%



Fire Department
8.1%



Education K-12
43.9%



Indoor Pool, Community Campus, and Prescott Park Transfers
0.7%

Non-Operating Expenditures represent 18.9% of the total Expenditures



Debt Service
9.6%



Rockingham County Tax
4.1%



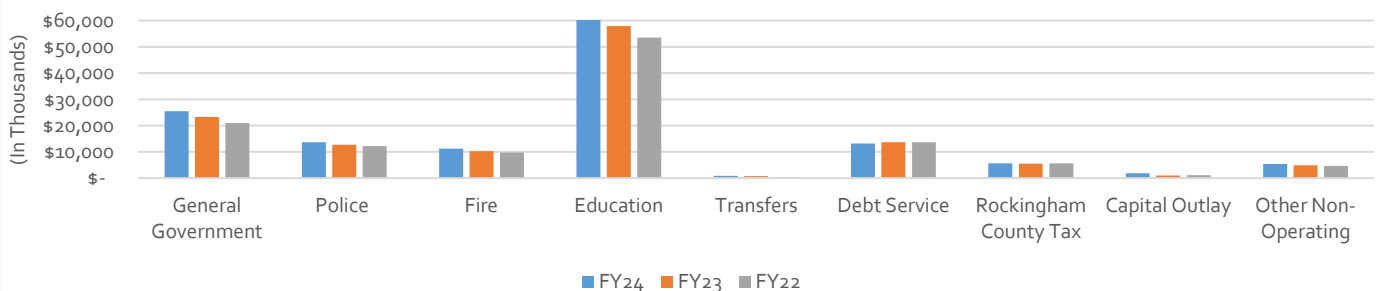
Capital Outlay
1.3%



Other Non-Operating
3.9%

- **General Government** – City Council, City Manager, Finance, City Clerk, Elections, Legal, Human Resources, Public Works, Planning & Sustainability, Inspection, Health, Information Technology, Public Library, Recreation, Senior Services, Welfare, Outside Social Services, Economic & Community Development, and Emergency Management
- **Transfers** – Annual transfers from General Fund for operating expenses for the Indoor Pool, Community Campus, and Prescott Park
- **Debt Service** – Principal and Interest on Long-Term Debt
- **Rockingham County Tax** – Portsmouth's apportionment of the Rockingham County Tax Obligation
- **Other Non-Operating** – Overlay, Capital Outlay, Contingency, IT Equipment Replacement, and Rolling Stock

Actual Expenditures Comparison
(In Thousands)



General Fund – Fund Balance

GENERAL FUND BALANCE SHEET

	2024	2023	2022
Assets			
Cash and Investments	\$ 56,234,534	\$ 53,126,557	\$ 55,129,854
Receivables			
Property Taxes	2,907,361	2,104,598	2,386,476
Departmental and other	1,236,303	4,260,209	948,406
Intergovernmental	5,486,763	6,227,737	-
Leases	247,415	263,215	293,877
Due from other funds	3,294,487	2,064,151	1,240,181
Advances to other funds	296,760	339,760	385,160
Other assets	293,585	77,564	109,038
Total Assets	<u>\$ 69,997,208</u>	<u>\$ 68,463,791</u>	<u>\$ 60,492,992</u>
Liabilities			
Accounts payable	\$ 2,749,513	\$ 1,603,635	\$ 1,599,959
Accrued liabilities	2,824,710	2,065,726	2,862,519
Notes payable	48,737	-	-
Tax refunds liability	2,493,618	313,471	1,686,561
Other liabilities	1,585,766	1,190,179	2,388,281
Total Liabilities	<u>9,702,344</u>	<u>5,173,011</u>	<u>8,537,320</u>
Deferred Inflows of Resources	7,800,279	7,922,823	1,771,061
Fund Balances			
Nonspendable	296,760	339,760	385,160
Committed	23,415,383	27,665,287	23,464,101
Assigned	9,858,576	9,194,343	9,178,551
Unassigned	18,923,866	18,168,567	17,156,799
Total Fund Balance	<u>52,494,585</u>	<u>55,367,957</u>	<u>50,184,611</u>
Total Liabilities, Deferred Inflows of Resources, and Fund Balance	<u>\$ 69,997,208</u>	<u>\$ 68,463,791</u>	<u>\$ 60,492,992</u>

The General Fund balance sheet is prepared using the modified accrual basis of accounting. There are no long-term assets or liabilities reported on this statement.

Fund Balance is the excess of an entity's assets over its liabilities.

Total Fund Balance of \$52,494,585 or 37.9% of appropriations, represents a decrease of \$2,873,372 or 5.2% from prior year.

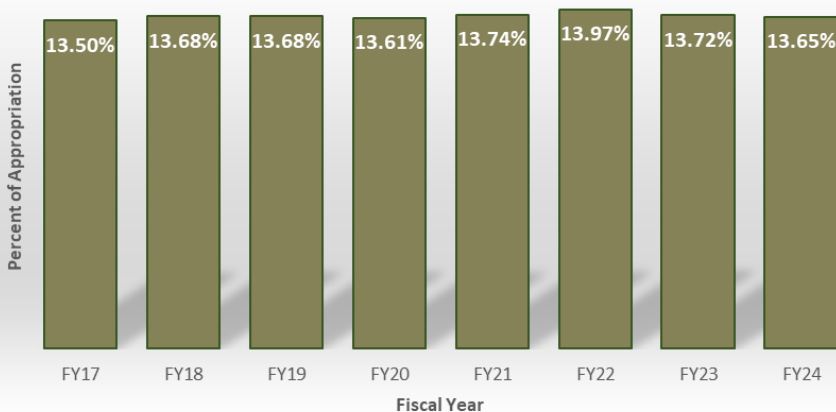
Unassigned Fund Balance Ordinance

The unassigned portion of the fund balance represents available resources that can be spent for future needs.

The City Council adopted in Fiscal Year 1998 the "Unassigned Fund Balance Ordinance." In Fiscal Year 2013, the ordinance was amended mandating that the City will maintain an unassigned fund balance of between 10% and 17% of general fund appropriations.

Unassigned fund balance at the end of the fiscal year was \$18,923,866 or 13.65% of the final general fund budget. This is an increase of \$755,299 or 4.2% from prior year.

GENERAL FUND - UNASSIGNED FUND BALANCE



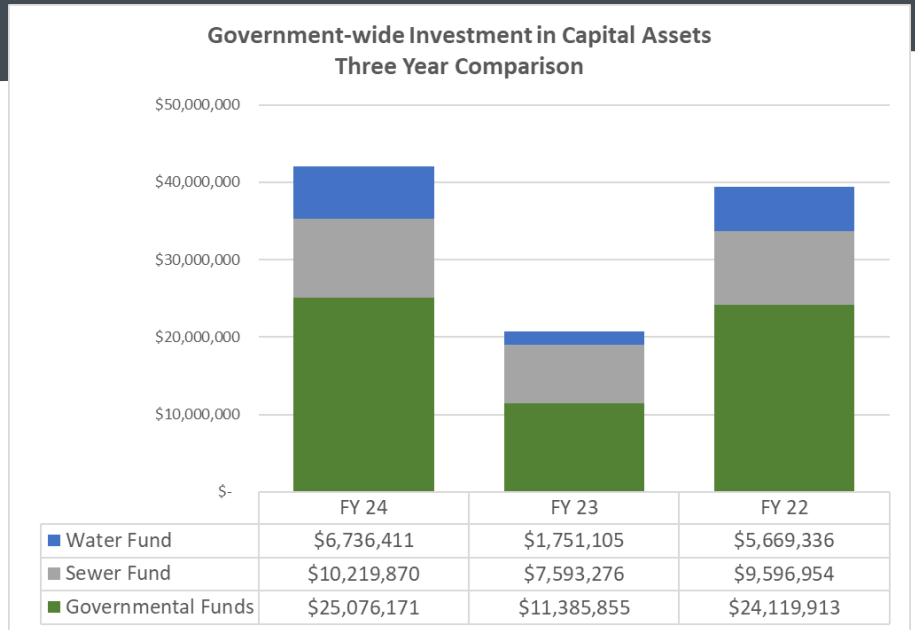
Capital Assets

The City invests in capital improvements each year. The chart depicts a 3-year history of capital expenditures to purchase, construct, or improve infrastructure Citywide. These projects are funded through annual appropriations, bonds, loans, grants, and other capital contributions.

Governmental Activities

Capitalized Assets

- Skateboard Park
- Turf Field
- Street Paving – Bridge, Marcy, Newcastle, Mirona, South, Kearsarge, Atlantic Heights, Middle, Court, Maplewood
- City Hall improvements
- Police Station improvements



Water Fund Activities

Capitalized Assets

- Corporate Drive waterline
- Pease and Madbury Water Treatment buildings/equipment

Sewer Fund Activities

Capitalized Assets

- Sagamore Avenue sewer extension
- Storm Water Master Plan

S&P Global PORTSMOUTH IS A “AAA” BOND RATED COMMUNITY

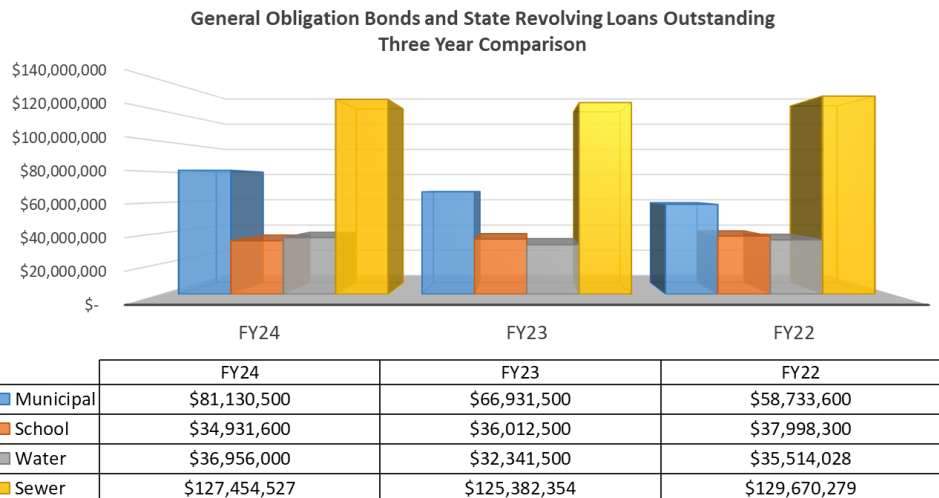
In May 2024, S&P Global Ratings, a division of Standard & Poor’s Financial Services LLC, affirmed once again the City’s AAA bond rating.

A bond rating is a grade given to bonds issued that indicates a community’s credit worthiness, similar to your own personal credit score.

A “AAA” rating represents the highest credit rating available and translates to significant savings to you as the taxpayer through reduced interest rates on bonds which funds major capital projects.

At the end of FY24, City debt totaled \$280.5 million (excluding unamortized premiums). This represents an increase of \$19.8 million from last year’s total debt of \$260.7 million. The net increase is attributable to:

- Outstanding debt principal reduced by \$20.9 million; and
- General Obligation (GO) bonds issued for \$40.7 million.



Long-term Debt



Enterprise Funds – Water & Sewer

An Enterprise Fund establishes a separate accounting and financial reporting mechanism for municipal services for which a fee is charged in exchange for goods and/or services to the public. The City of Portsmouth has two Enterprise Funds, Water and Sewer, and each are accounted for separately.

How are my water & sewer rates established?

The City’s water and sewer rate structure is a two-tiered inclining rate, meaning the first 10 units (a unit is 100 cubic feet of water or 748 gallons) of water consumed each month are billed using one rate, and water consumed greater than 10 units per month is billed at a higher rate. Since the large volume users have a greater impact on the water system, a second tier at the higher rate captures the additional costs incurred to serve them.

Does the City allow for Irrigation Meters?

YES!

The City allows for irrigation meters for both residential and commercial customers on a three-tiered inclining rate basis. Please call Public Works at (603) 766-1443 for more information.



What is the meter charge on my monthly bill?

The monthly meter charge is for ongoing maintenance and service of meters installed on the property and is based on the service size. The typical residential meter is 5/8” and is \$4.95/month.



Did you know the City offers Water & Sewer Assistance Programs?

The City offers Water and Sewer payment assistance for qualifying customers who are residential homeowners or tenants. Information regarding these programs can be found on the City’s Website at <https://www.cityofportsmouth.com/public-works/water-and-sewer-assistance-programs> or call our billing department at (603) 610-7248 or (603) 610-7237.



Did you know the City offers new toilet and washing machine rebates for qualifying appliances? For more information visit: <https://www.cityofportsmouth.com/publicworks/residential-toilet-and-washing-machine-rebate-program-additional-information>



FY24 WATER RATE

Consumption per month

1st Tier Rate (10 units or less)	\$4.74
2 nd Tier Rate (over 10 units)	\$5.70

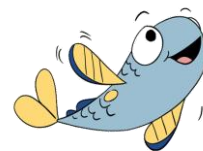
Irrigation Meter Consumption Rates

1st Tier Rate [0-10 units]	\$5.70
2 nd Tier Rate [11-20 units]	\$10.76
3 rd Tier Rate [over 20 units]	\$13.28

FY24 SEWER RATES

Sewer rates are based on water consumption per month.

1 st Tier Rate (10 units or less)	\$16.49
2 nd Tier Rate (over 10 units)	\$18.14



Enterprise Funds – Water & Sewer Funds

The Water and Sewer funds are reported on the proprietary fund financial statements and use the full accrual basis of accounting similar to the private sector. Each report equity as net position. The Statement of Revenues, Expenses, and Changes in Net Position for FY24 and FY23 is displayed below for comparison.

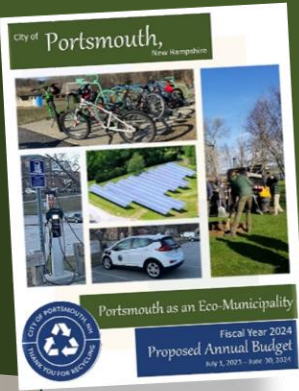


CITY OF PORTSMOUTH, NEW HAMPSHIRE
 PROPRIETARY FUNDS
 STATEMENT OF REVENUES, EXPENSES, AND CHANGES IN NET POSITION

	Water 2024	Water 2023	Sewer 2024	Sewer 2023	Total 2024	Total 2023
Operating Revenues:						
Charges for services	\$ 8,731,082	\$ 9,056,883	\$ 18,485,632	\$ 18,121,938	\$ 27,216,714	\$ 27,178,821
Licenses and permits	1,233,597	1,158,020	214,758	138,241	1,448,355	1,296,261
Department revenue	225,704	230,101	273,498	196,185	499,202	426,286
Other revenue	-	-	-	-	-	-
Total Operating Revenues	10,190,383	10,445,004	18,973,888	18,456,364	29,164,271	28,901,368
Operating Expenses:						
Personnel services	3,720,436	2,767,375	4,776,295	3,963,314	8,496,731	6,730,689
Non-personnel services	4,036,053	3,928,740	7,807,718	7,745,045	11,843,771	11,673,785
Depreciation	2,599,553	2,573,747	5,138,544	5,035,803	7,738,097	7,609,550
Total Operating Expenses	10,356,042	9,269,862	17,722,557	16,744,162	28,078,599	26,014,024
Operating Income	(165,659)	1,175,142	1,251,331	1,712,202	1,085,672	2,887,344
Non-operating Revenues (Expenses):						
Intergovernmental revenues	39,470	-	-	3,564,327	39,470	3,564,327
Investment income	465,693	365,670	1,347,476	939,710	1,813,169	1,305,380
Bond premium amortization	1,055,217	245,204	1,446,735	332,469	2,501,952	577,673
Interest expense	(1,147,654)	(1,273,562)	(3,479,802)	(3,447,705)	(4,627,456)	(4,721,267)
Loss on disposal of capital assets	-	-	-	(13,388)	-	(13,388)
Total Non-operating Revenues (Expenses)	412,726	(662,688)	(685,591)	1,375,413	(272,865)	712,725
Income Before Contributions and Transfers	247,067	512,454	565,740	3,087,615	812,807	3,600,069
Capital contributions	983,380	1,035,778	3,129,825	131,175	4,113,205	1,166,953
Transfers out	-	-	(619,043)	(451,789)	(619,043)	(451,789)
Change in Net Position	1,230,447	1,548,232	3,076,522	2,767,001	4,306,969	4,315,233
Net Position, at Beginning of Year	63,086,992	61,538,760	81,684,295	78,917,294	144,771,287	140,456,054
Net Position, at End of Year	\$ 64,317,439	\$ 63,086,992	\$ 84,760,817	\$ 81,684,295	\$ 149,078,256	\$ 144,771,287

The total net position for the Water and Sewer Funds at the end of the fiscal year increased by \$4.3 million to a total of \$149.1 million. The Water Fund increased by \$1.2 million, and the Sewer Fund increased by \$3.1 million. Key elements of the changes include:

- A decrease in Water Fund operating revenues of \$254,621 despite rising rates, suggesting lower consumer consumption year over year. Water's operating expenses grew by \$1.1 million due to salary increases and changes in staffing. As a result, the Water Fund ended with a deficit in operating income.
- An increase in Sewer Fund operating revenues of \$517,524 as a result of increased user rates. Sewer also saw operating expenses rise by \$978,395 due to salary increases. Sewer's operating income was positive at \$1.25 million but was \$460,871 lower than the previous year despite rising rates.
- Non-operating revenues (net expenses) and capital contributions in the Water Fund overcame the loss in operating income, adding \$1.4 million to drive an increase in net position of \$1,230,447. The increase was primarily driven by the impact of just over \$1 million in amortized bond premiums being recognized.
- In the Sewer Fund, non-operating revenues (net expenses) and capital contributions added \$1.8 million to the operating income to drive an increase in net position of \$3,076,522. That increase was primarily driven by \$1.4 million in amortized bond premiums being recognized plus over \$1.3 million in investment income.



Next Year's FY25 Budget

At the time of publication of the PAFR for year ending June 30, 2024, Fiscal Year 2025 is underway, and the budget document is available for review at the Public Library, the City Clerk's office, as well as on the City's website. The document describes the strategy implemented to continue the services, critical infrastructure needs, and fiscal stability of the City.

General Fund Fiscal Year 2025 Budget

Operating Budget

General Government	26,485,432
Police Department	14,586,704
Fire Department	12,492,159
School Department	64,061,713
Transfers to Other Funds	928,285
Total Operating	\$ 118,554,293

Non-Operating Budget

Debt Service	14,284,300
Rockingham County Tax	5,730,000
Capital Outlay	1,638,000
IT / SBITA	1,780,819
Legal Fees	500,000
Other Non-Operating	2,373,935
Total Non-Operating	\$ 26,307,054

Total Annual Budget \$ 144,861,347

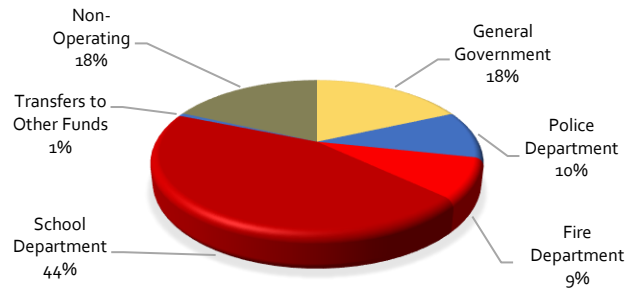
Tax Rate

The tax rate approved by the NH Department of Revenue Administration is **\$11.18** per \$1,000 of assessed value.



Comparing the tax rate for Tax Year 2024 (Fiscal Year 2025) with the prior year rate is complicated by the mandatory 5-year property revaluation completed during 2024. The total property tax base valuation changed from \$6.5 billion in 2023 to \$10.1 billion in 2024.

FY25 GENERAL FUND BUDGET



Water and Sewer Rates

Both the Water and Sewer Division user rates have been set based on a two-tier inclining rate block structure based on units of water consumed. One unit is equal to 100 cubic feet or 748 gallons of water.



The FY25 water user rates reflect a 6.0% increase from FY24.

- First 10 units of water consumed per month increased from \$4.74 to \$5.02.
- Over 10 units per month increased from \$5.70 to \$6.04.



The FY25 irrigation rates are based on a three-tier inclining rate structure.

- First 10 units of water consumed \$6.04/unit
- 10 units up to 20 units consumed \$11.41/unit
- Above 20 units consumed \$14.08/unit



The FY25 sewer user rates reflect a 5.0% increase from the FY24 rates.

- First 10 units of water consumed per month increased from \$16.49 to \$17.32.
- Over 10 units per month increased from \$18.14 to \$19.05 per unit.

Did you know . . .

? You can donate funds to a City Project?

Go to the City's Website <https://www.cityofportsmouth.com/city/pay-my-bill> to donate, or scan a QR code below with your mobile phone.



Skateboard Park

City Cemetery Improvements



Portsmouth Public Library



Community Education Scholarships

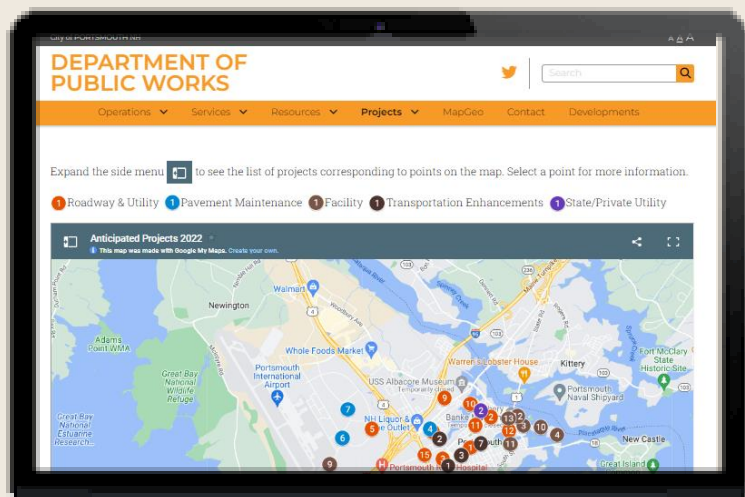


? The City has a webpage dedicated to providing the public information about City Projects?

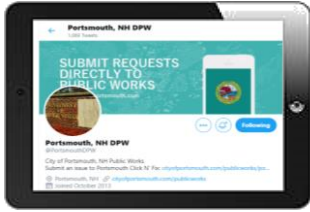
You can find the Project Page on the City's Department of Public Works Page on the City's Website. <https://www.cityofportsmouth.com/publicworks/projects>

City projects in progress are listed as well as additional project information including:

- Project Description
- Project Status
- Designer
- City Staff Contact
- Unique Project Webpage Address



Download City Apps



Portsmouth Click N' Fix

Connect with the Public Works Department, send images, report issues, and more!

ParkMobile

View parking amenities and pay for parking (as well as feed the meter) all from your cell phone. **Residents can register to get a discount when using the Park Mobile App!**

ChargePoint Mobile App

The ChargePoint App helps the user find and utilize City ChargePoint EV Charging Stations.

Dockwa

Find and reserve available Prescott Park dock spaces online.

Libby and Hoopla

Explore Library Apps that allow you to download ebooks, audio, and magazines.

Smart911

This allows for Citywide Emergency alerts including snow parking bans.

For the most up-to-date list of resources to connect with the City of Portsmouth, visit: <https://portsnh.co/connect>



Visit CityofPortsmouth.com to:

- ✓ Pay your [Parking Ticket](#), [Water/ Sewer Bill](#), [Property Tax Bill](#), and more;
- ✓ Renew your [Motor Vehicle Registration](#);
- ✓ Register or Renew your [Dog License](#);
- ✓ Utilize [City Project Pages](#) to find information and sign up for email notices on individual projects;
- ✓ Get a City permit online with [ViewPoint Cloud Permits](#);
- ✓ Research property values through the [Vision Software system](#);
- ✓ View 3D maps of the City through [MapGeo](#);
- ✓ Sign up for the [City's Newsletter](#); and
- ✓ Send questions by email to: hotline@cityofportsmouth.com

Follow City Departments on Social Media

For up-to-date information on Citywide happenings (Road closures, recreation programs, parking information, snow bans, and more), follow City Departments on Social Media:



Facebook

- ✓ City Hall: [@cityhallportsmouthnh](#)
- ✓ Fire Department: [@portsmouthnhfiredepartment](#)
- ✓ Portsmouth Public Library: [@pplnh](#)
- ✓ Police Department: [@portsmouthnhpd](#)
- ✓ Recreation Department: [@portsmouthnhrec](#)
- ✓ Schools: [@PortsmouthSD](#)



X (Twitter)

- ✓ City of Portsmouth: [@MuniPortsmouth](#)
- ✓ Police Department: [@portsmouthnhpd](#)
- ✓ Fire Department: [@portsmouthnhfd](#)
- ✓ Park Portsmouth: [@ParkPortsmouth](#)
- ✓ Public Works Department: [@PortsmouthDPW](#)
- ✓ Recreation Department: [@PortsmouthRec](#)
- ✓ Portsmouth Schools: [@portsschools](#)
- ✓ Planning Department: [@PlanPortsmouth](#)
- ✓ Portsmouth Public Library: [@PortsmouthLibNH](#)



Instagram

- ✓ City of Portsmouth: [@cityofportsmouth](#)
- ✓ Public Works Department: [@portsmouthnhdpw](#)
- ✓ Stormwater Division: Think Blue Portsmouth, NH [@thinkblueportsmouthnh](#)
- ✓ Portsmouth Public Library: [@Portsmouthpubliclibrary](#)
- ✓ Park Portsmouth: [@Park_portsmouthnh](#)



Threads

- ✓ City of Portsmouth: [@cityofportsmouth](#)




Watch City Meetings LIVE from anywhere (plus recent or archived City Meetings) on the [City's YouTube Channel](#) <https://www.youtube.com/user/CityofPortsmouth> and TV Channel 22.

Contact Us

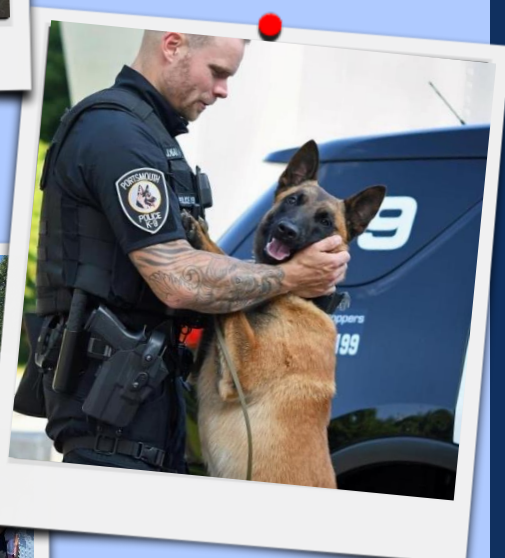
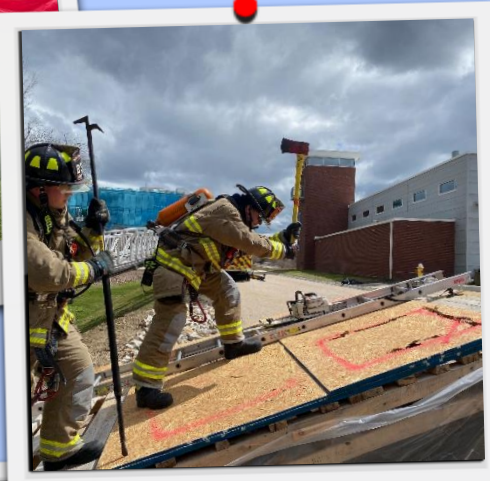
Name/ Department	Telephone Number	Primary Location
City Hall	603-431-2000	Portsmouth City Hall 1 Junkins Ave Portsmouth, NH 03801
Mayor	603-610-7200	Portsmouth City Hall
City Manager	603-610-7202	Portsmouth City Hall
Deputy City Manager	603-610-7297	Portsmouth City Hall
Finance Department Accounts Payable Purchasing Tax Collector City Assessor	603-610-7839 603-610-1712 603-610-7244 603-610-7249	Portsmouth City Hall
Public Works	603-427-1530	Public Works Building 680 Peverly Hill Road Portsmouth, NH 03801
Police Department	Emergency – 911 Non-Emergency 603-427-1500	Portsmouth Police Department 3 Junkins Avenue Portsmouth, NH 03801
Fire Department	Emergency – 911 Non-Emergency 603-427-1515	Portsmouth Fire Department – Station 1 170 Court Street Portsmouth, NH 03801
Public Library	603-427-1540	Portsmouth Public Library 175 Parrott Avenue Portsmouth, NH 03801
School Department	603-431-5080	Portsmouth School Department 1 Junkins Avenue, Suite 402 Portsmouth, NH 03801
City Clerk's Office	603-610-7245	Portsmouth City Hall
Health Department	603-610-7273	Portsmouth City Hall
Inspection Department	603-610-7243	Portsmouth City Hall
Planning Department	603-610-7296	Portsmouth City Hall
Human Resources	603-610-7270	Portsmouth City Hall
Legal Department	603-610-7204	Portsmouth City Hall
Recreation Department	603-766-1483	Connie Bean 155 Parrott Avenue Portsmouth, NH 03801
Senior Services	603-610-4433	Portsmouth Senior Activity Center 125 Cottage Street Portsmouth, NH 03801
Welfare	603-610-7267	Portsmouth City Hall

The City's domain name is changing!

In January 2025, the City will transition
from cityofportsmouth.com  portsmouthnh.gov.
For more information on the reasons for – and effects of – this
change, visit: portsnh.co/switch.

**IMPORTANT
ANNOUNCEMENT**





2024

Popular Annual Financial Report
Fiscal Year Ended June 30, 2024

CityOfPortsmouth.com