

Prescott Park Master Plan



City of Portsmouth
Weston & Sampson's Design Studio
Gene Bolinger, RLA
Cheri Ruane, RLA



Prescott Park Master Plan
January 11, 2017

Weston & Sampson™
DESIGN STUDIO

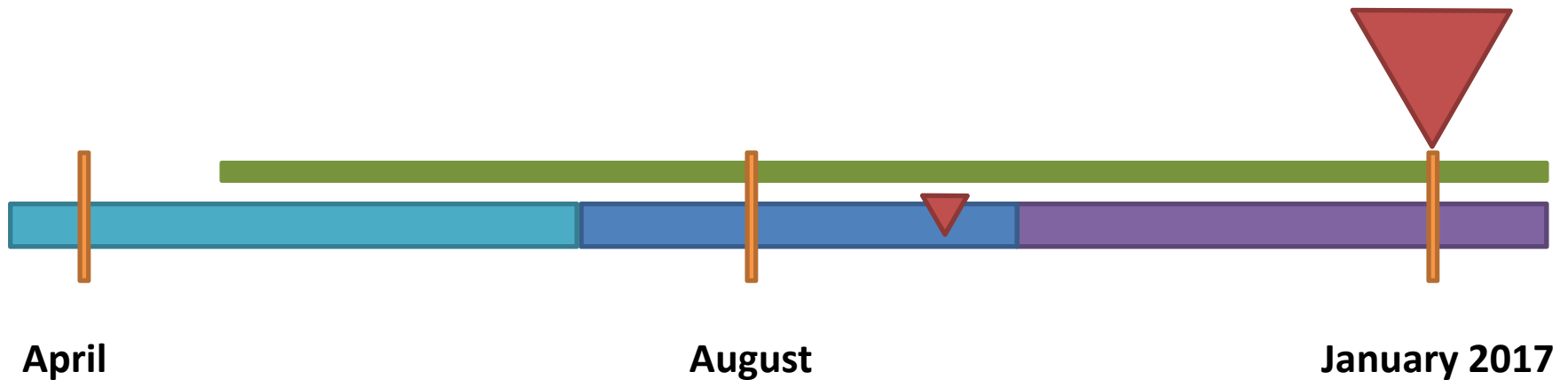
Phases

- Site Analysis
- Public Input & Participation
- Conceptual Design
- Master Plan & Facilities Plan

Timeline

- Spring / Summer
- Project Duration
- Summer
- Fall / Winter

WE ARE HERE!



Prescott Park Master Plan
January 11, 2017

Weston & Sampson™
DESIGN STUDIO

The Master Plan | What it Means?

What it represents | What it doesn't represent

And what happens next



Prescott Park Master Plan
January 11, 2017

Weston & Sampson™
DESIGN STUDIO

Design Tenets

- 1. Recognition of City-owned nature of the park**
2. Use “for park and recreational purposes” per the trust
3. Pedestrian through-route accessibility at all times
4. Maximize waterfront connection
- 5. Integrate coastal resilience/adaptation strategies**
6. Maintain and enhance maritime historical connection
7. Integrate into the neighborhood
- 8. Ensure presence for theater, dance, music and visual arts (including public art)**
9. Maintain different areas for a variety of park experiences
10. Plan for gatherings (informal and formal)
11. Maintain a Public Forum area
12. Include meaningful invitations for youth to play



The Park First Approach

- A waterfront park for the people of Portsmouth



Prescott Park Master Plan
January 11, 2017

Weston & Sampson™
DESIGN STUDIO

- A venue for all arts



Prescott Park Master Plan
January 11, 2017

Weston & Sampson™
DESIGN STUDIO

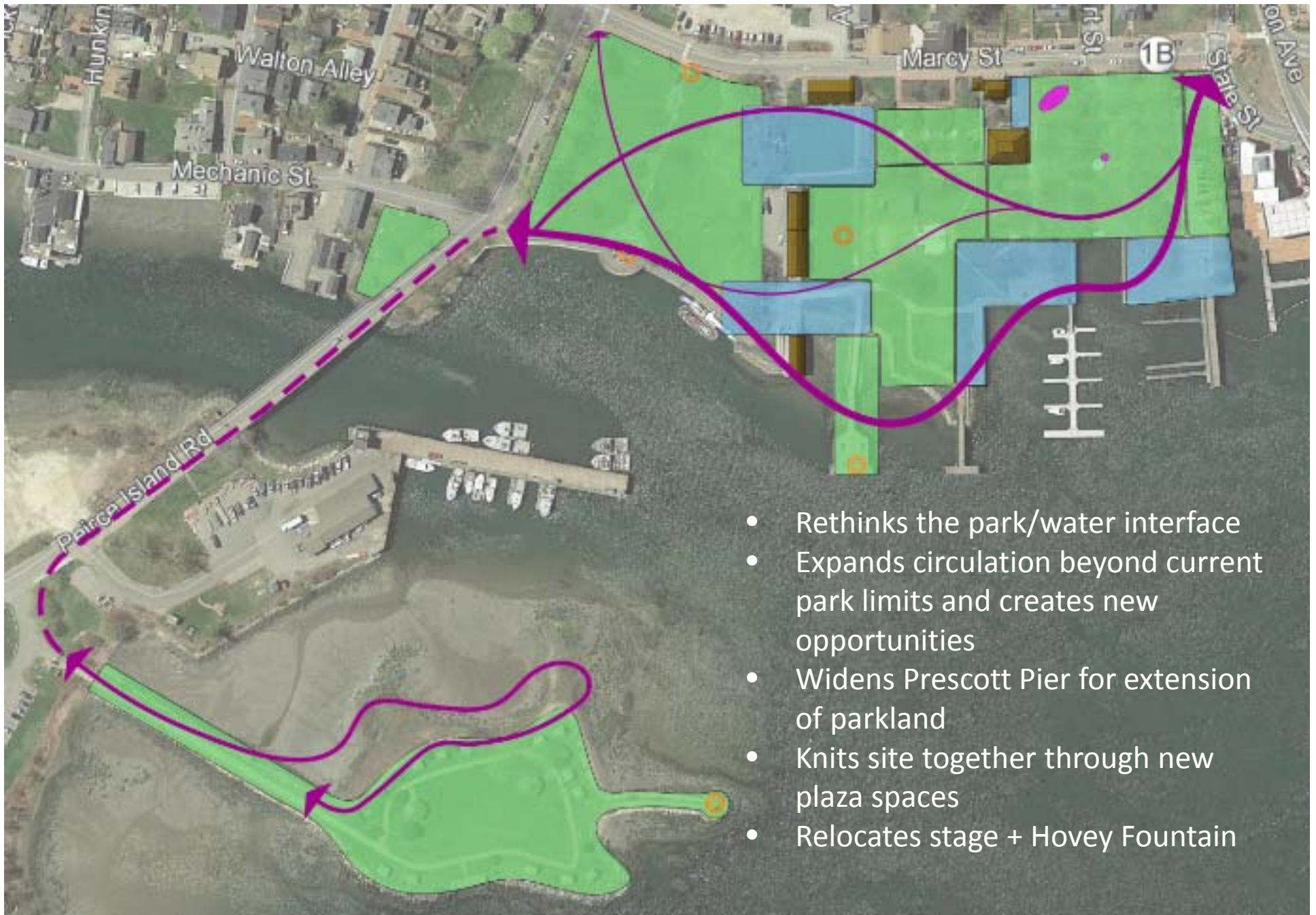
- Front line defense to the impacts of climate change



Prescott Park Master Plan
January 11, 2017

Weston & Sampson™
DESIGN STUDIO

Concept 3 – Water Connections



- Rethinks the park/water interface
- Expands circulation beyond current park limits and creates new opportunities
- Widens Prescott Pier for extension of parkland
- Knits site together through new plaza spaces
- Relocates stage + Hovey Fountain

Prescott Park Master Plan



Prescott Park Master Plan
January 11, 2017

Weston & Sampson™
DESIGN STUDIO

Prescott Park



Prescott Park Master Plan
January 11, 2017

Weston & Sampson™
DESIGN STUDIO

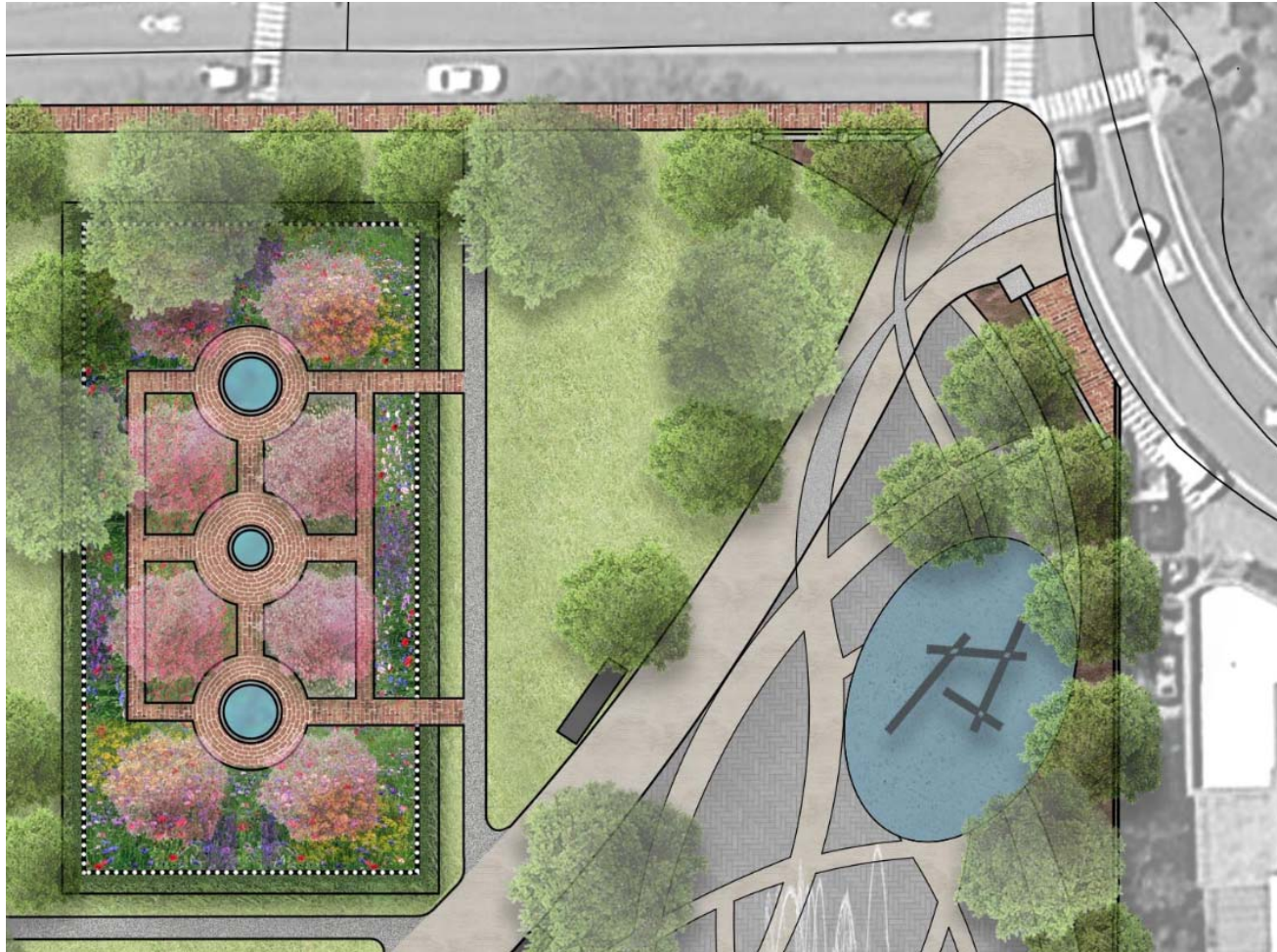
Four Tree Island



Prescott Park Master Plan
January 11, 2017

Weston & Sampson™
DESIGN STUDIO

Park Entrance at Marcy Street & State Street



Prescott Park Master Plan
January 11, 2017

Weston & Sampson™
DESIGN STUDIO

Park Entrance at Marcy Street & State Street



Prescott Park Master Plan
January 11, 2017

Weston & Sampson™
DESIGN STUDIO

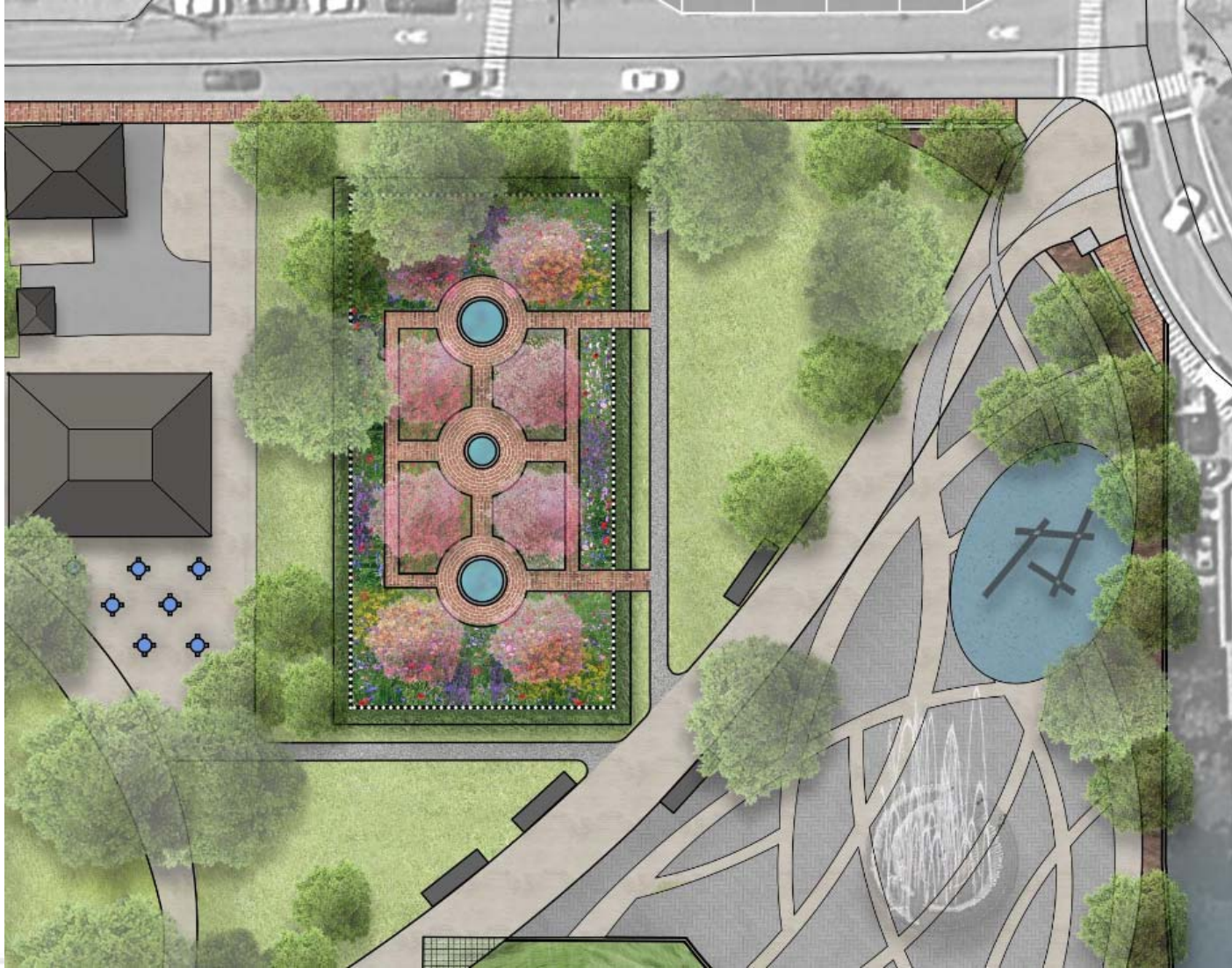
Public Art & Play



Prescott Park Master Plan
January 11, 2017

Weston & Sampson™
DESIGN STUDIO

Formal Garden



Prescott Park Master Plan
January 11, 2017

Weston & Sampson™
DESIGN STUDIO

Formal Garden



Prescott Park Master Plan
January 11, 2017

Weston & Sampson™
DESIGN STUDIO



Formal Garden



Prescott Park Master Plan
January 11, 2017

Weston & Sampson™
DESIGN STUDIO



Formal Garden



Prescott Park Master Plan
January 11, 2017

Weston & Sampson™
DESIGN STUDIO

Hovey Fountain Entrance on Marcy Street



Prescott Park Master Plan
January 11, 2017

Weston & Sampson™
DESIGN STUDIO

Original Hovey Fountain at Post Office



Prescott Park Master Plan
January 11, 2017

Weston & Sampson™
DESIGN STUDIO

Hovey Fountain Entrance on Marcy Street



Prescott Park Master Plan
January 11, 2017

Weston & Sampson™
DESIGN STUDIO

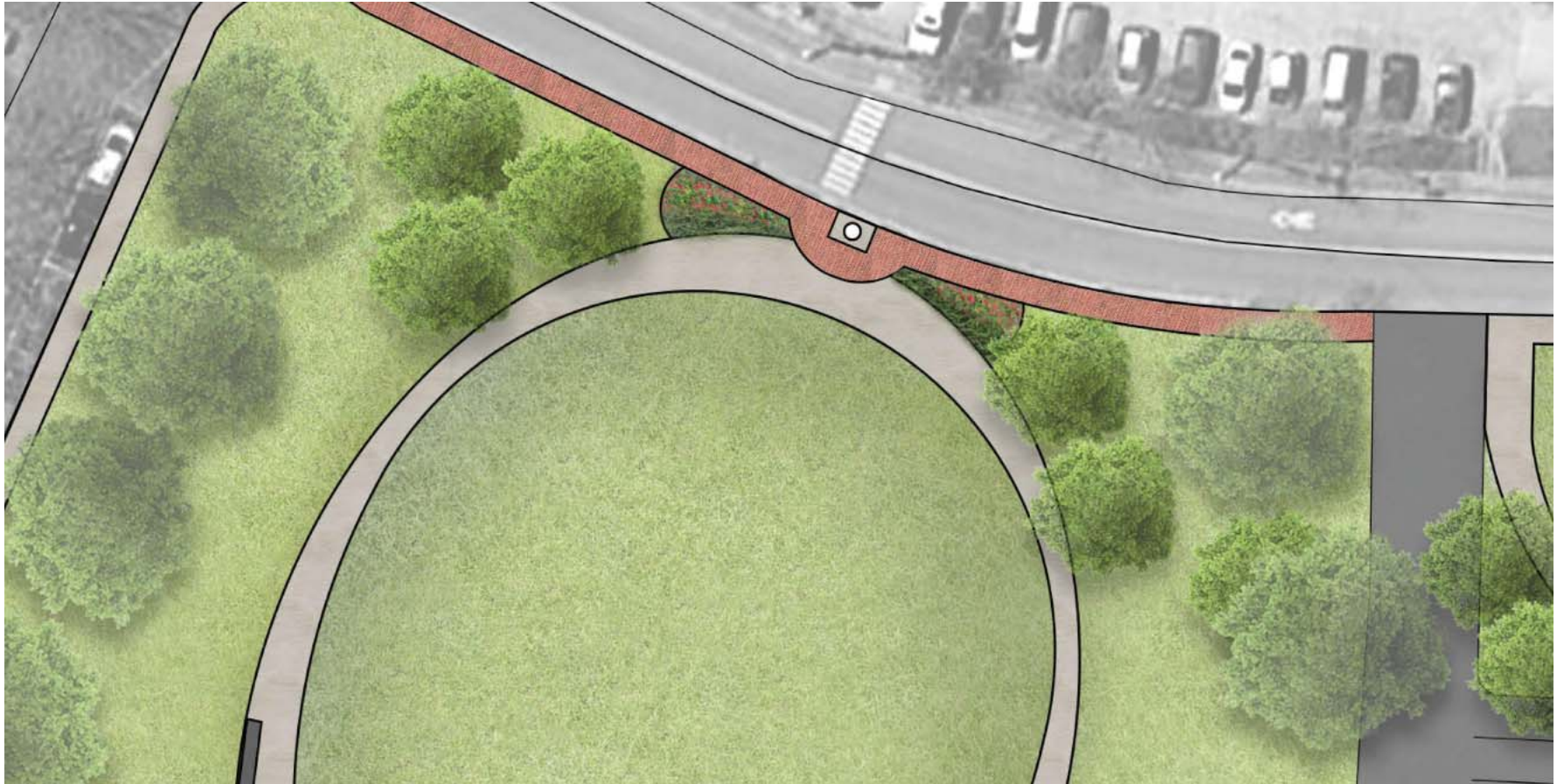
Hovey Fountain Entrance on Marcy Street



Prescott Park Master Plan
January 11, 2017

Weston & Sampson™
DESIGN STUDIO

Liberty Pole Entrance



Prescott Park Master Plan
January 11, 2017

Weston & Sampson™
DESIGN STUDIO



Prescott Park Master Plan
January 11, 2017

Liberty Pole Entrance

Weston & Sampson™
DESIGN STUDIO

Display Gardens (Former Trial Gardens)



Prescott Park Master Plan
January 11, 2017

Weston & Sampson™
DESIGN STUDIO

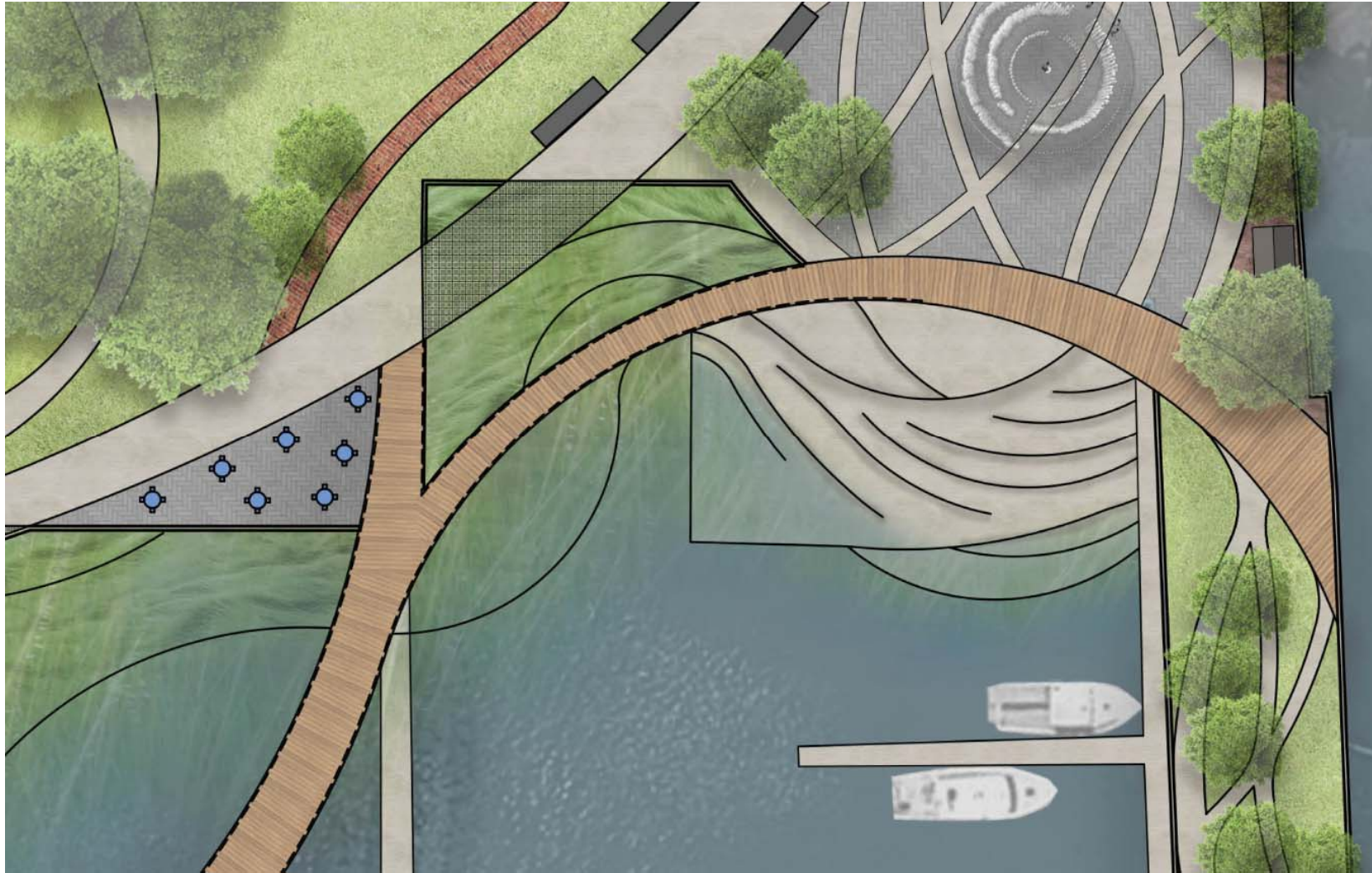
Display Gardens (Former Trial Gardens)



Prescott Park Master Plan
January 11, 2017

Weston & Sampson™
DESIGN STUDIO

Waterfront



Prescott Park Master Plan
January 11, 2017

Weston & Sampson™
DESIGN STUDIO

Waterfront



Prescott Park Master Plan
January 11, 2017

Weston & Sampson™
DESIGN STUDIO

Public Forum



Prescott Park Master Plan
January 11, 2017

Weston & Sampson™
DESIGN STUDIO

Hudson River Park + Piers



Prescott Park Master Plan
January 11, 2017

Weston & Sampson™
DESIGN STUDIO

The Bowl



Prescott Park Master Plan
January 11, 2017

Weston & Sampson™
DESIGN STUDIO

A Seasonal Use Stage Facility



Prescott Park Master Plan
January 11, 2017

Weston & Sampson™
DESIGN STUDIO

Current Stage and Lawn Conditions



Prescott Park Master Plan
January 11, 2017

Weston & Sampson™
DESIGN STUDIO

Informal Use of The Bowl



Prescott Park Master Plan
January 11, 2017

Weston & Sampson™
DESIGN STUDIO

Theater Performance



Prescott Park Master Plan
January 11, 2017

Weston & Sampson™
DESIGN STUDIO



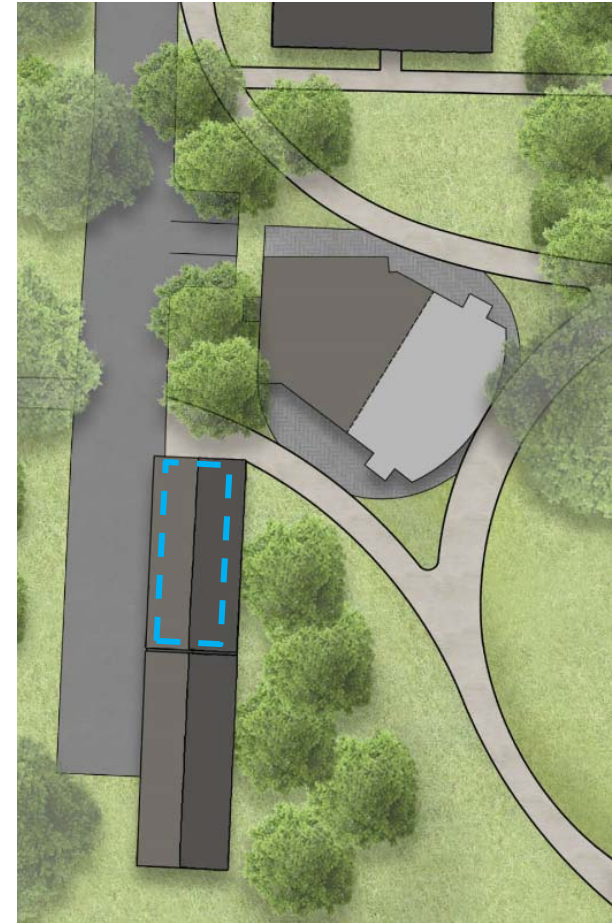
A Moveable Stage Facility for Seasonal Use



Prescott Park Master Plan
January 11, 2017

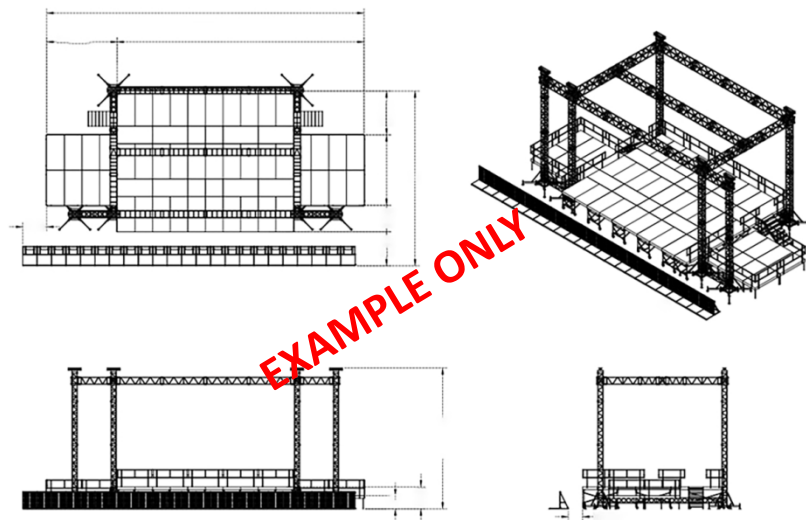
A Movable Stage Facility for Seasonal Use

- The Shaw Warehouse would be renovated and reconfigured to accommodate uses currently in trailers
- The stage design process includes site-specific structural and environmental considerations
- Professional companies will store, set up, inspect, take down and transport the stage facility
- Movable stages comply with the full building code and are inspected by city officials
- Movable stages are as safe as permanent structures when designed, installed and operated properly

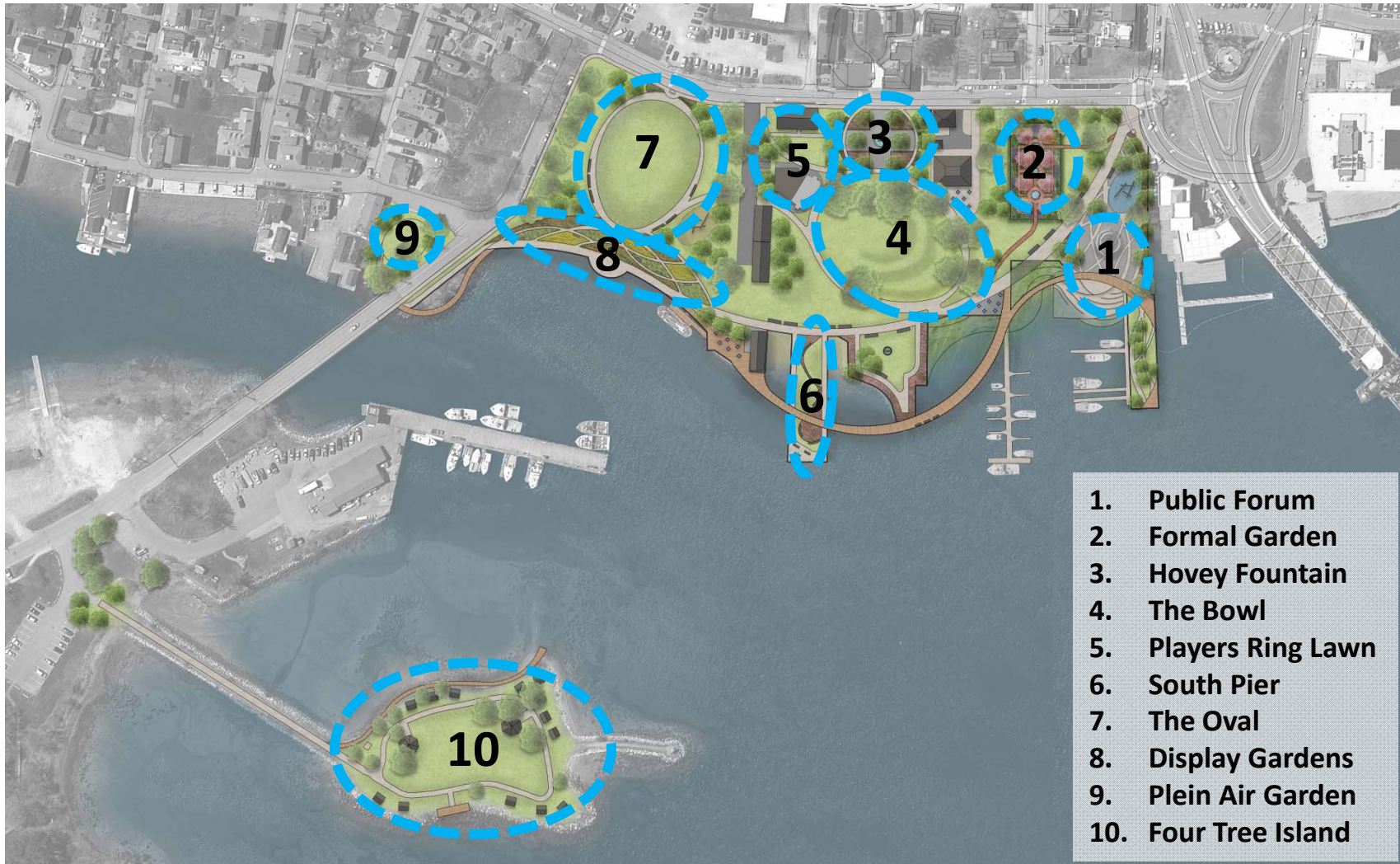


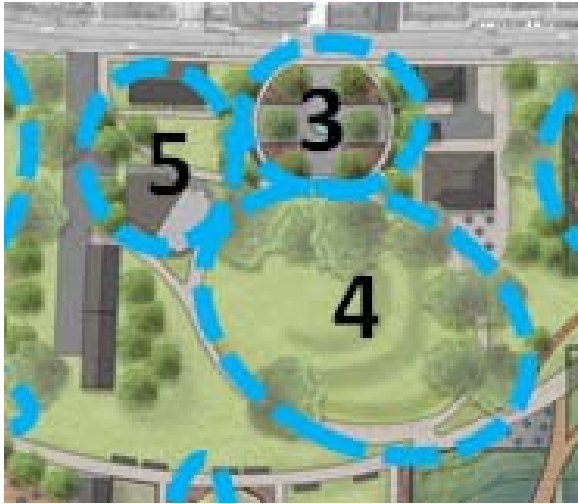
A Movable Stage Facility for Seasonal Use

- Earth anchors would be built into the park to provide ballast for the movable stage.
- The design of the stage would take into consideration the possibility of a cover over the performance area.
- A seasonal tent would be integrated to cover the back stage marshalling area



Park Usage & Capacity Diagrams





Hovey Garden, The Bowl & Players Ring Lawn

Hovey Garden

5,500 SF

50 person capacity

The Bowl

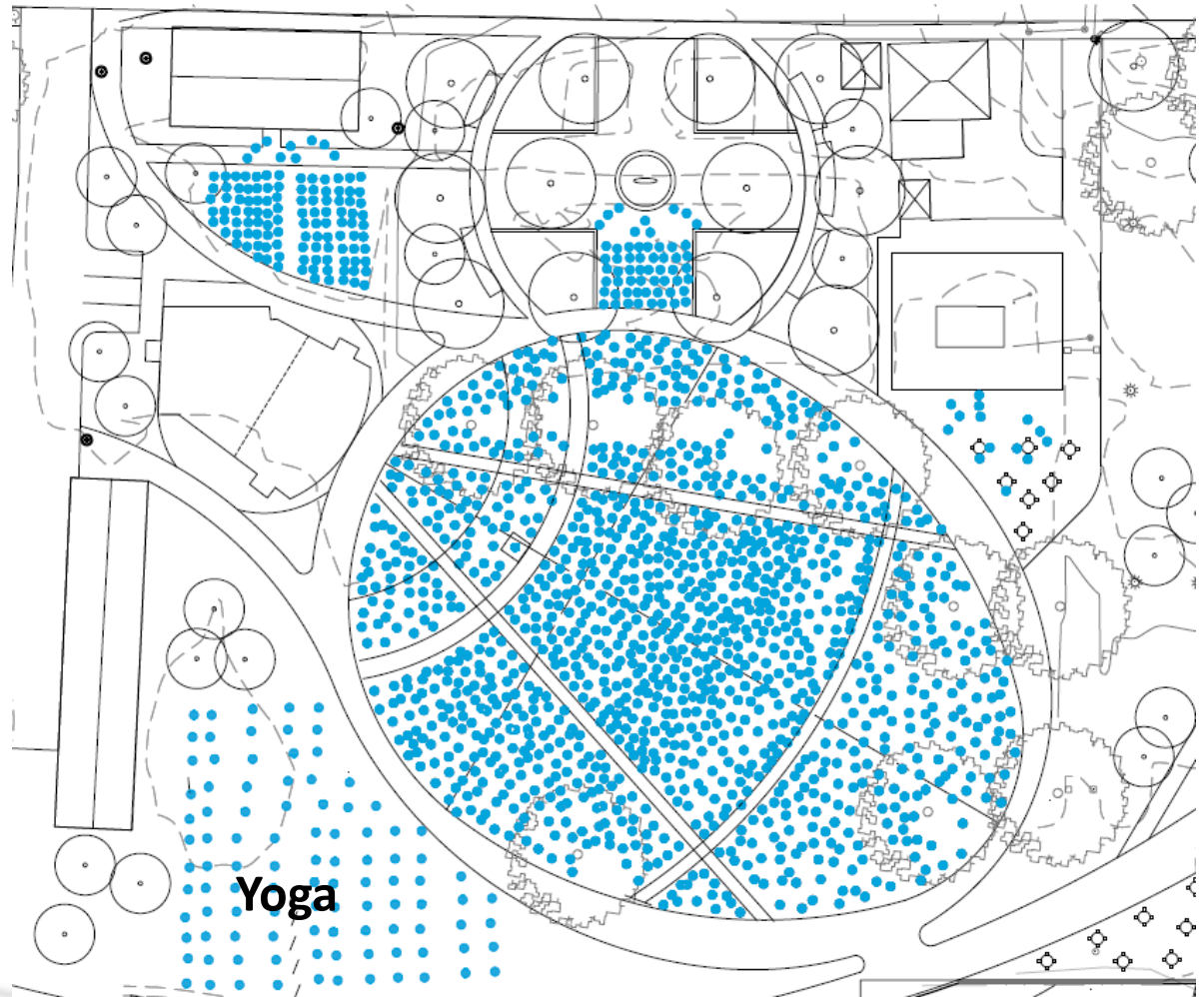
32,000 SF

1,200 person capacity

Players Ring Lawn

2,700 SF

100 person capacity

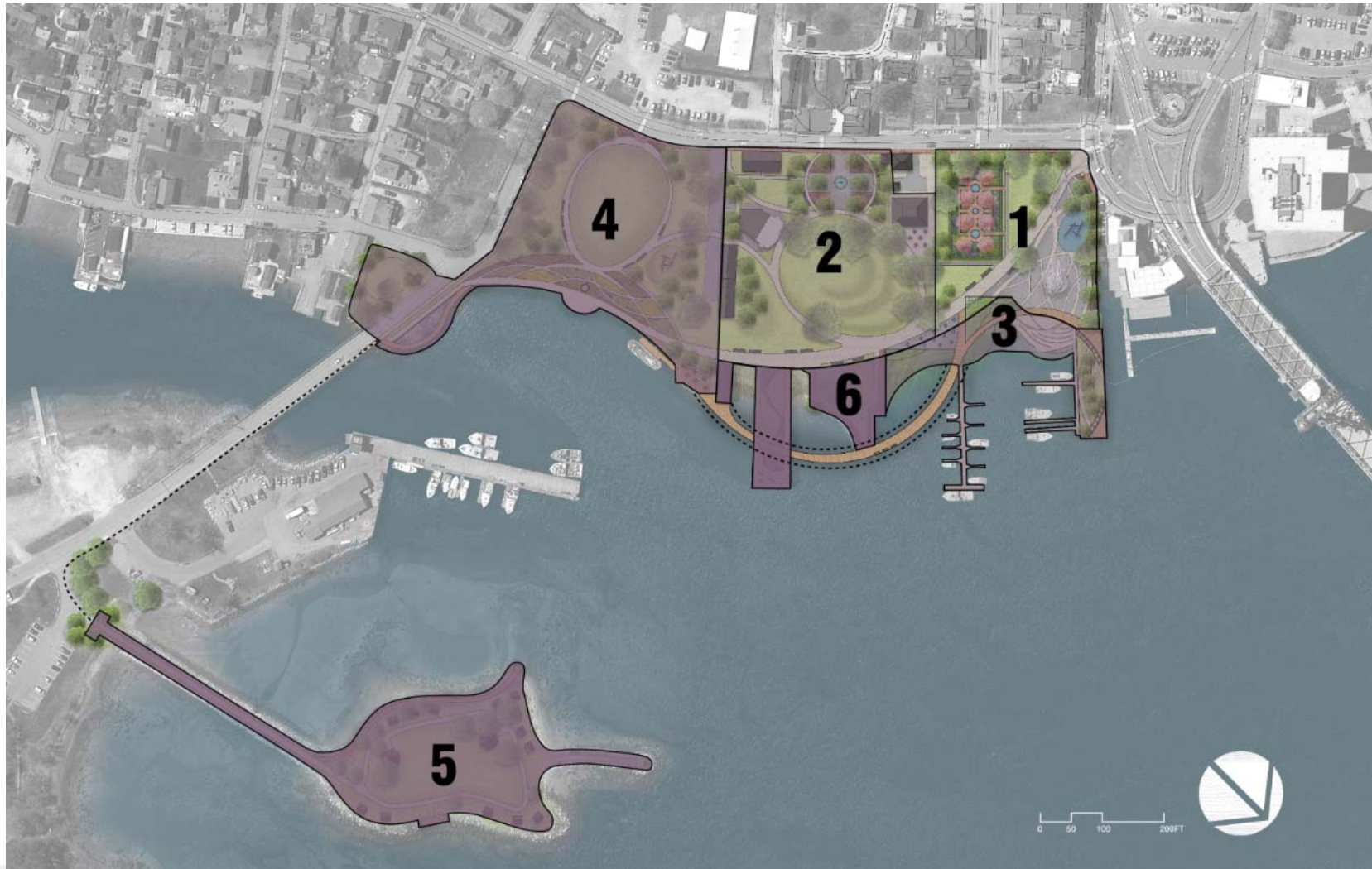


Cost / Phasing of Park Improvements

- Costs will be significant (whatever plan is adopted)
- Capital investments have been delayed until a comprehensive plan is in place
- Infrastructure needs are great



Cost / Phasing of Park Improvements



Prescott Park Master Plan
January 11, 2017

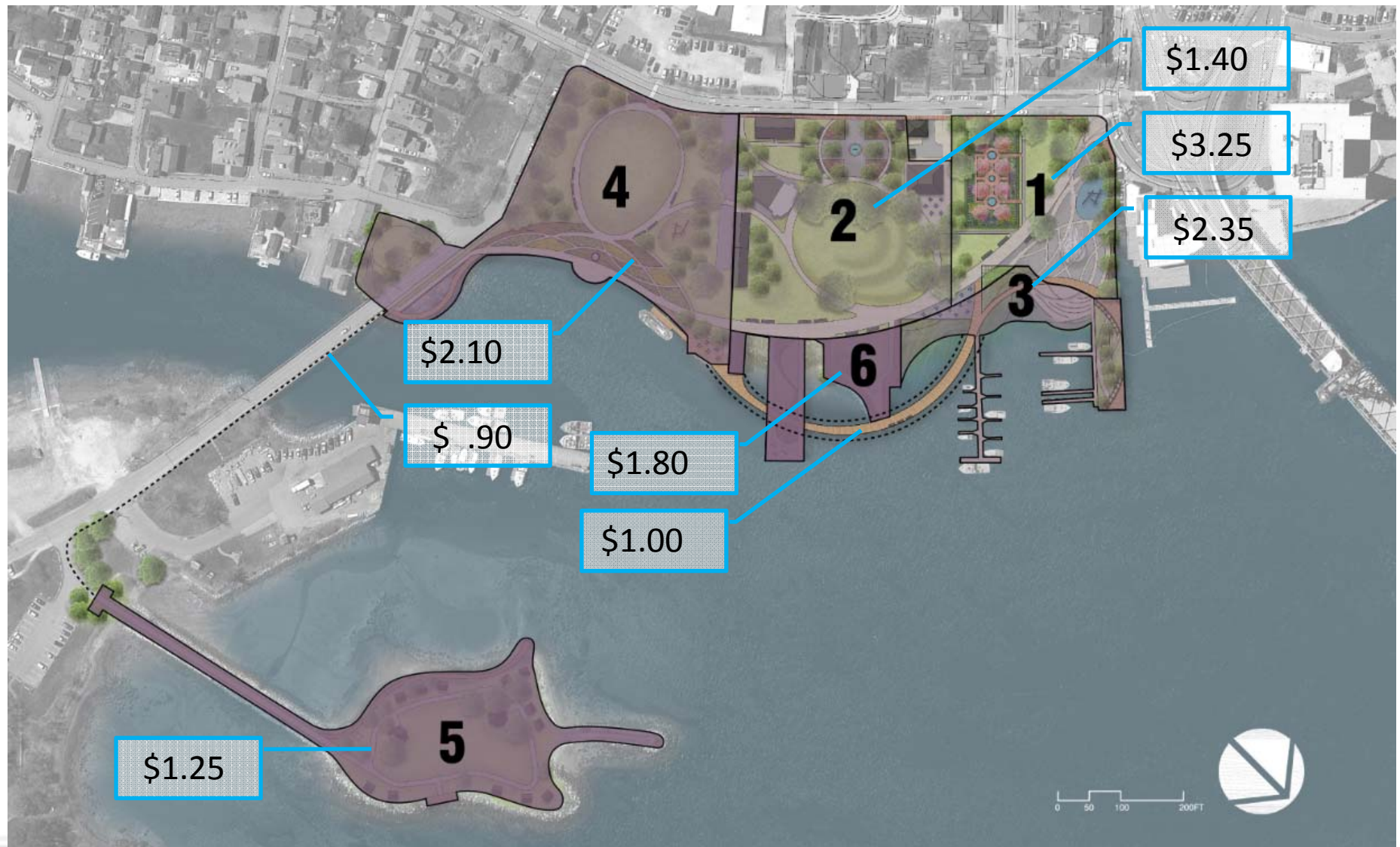
Weston & Sampson™
DESIGN STUDIO

Cost / Phasing of Park Improvements

PHASE		OPINION OF CONSTRUCTION COST
1	Grand Entrance	\$ 3,250,000
2	The Bowl	\$ 1,400,000
3	North Waterfront	\$ 2,350,000
4	The Oval	\$ 2,100,000
5	Four Tree Island	\$ 1,250,000
6	South Waterfront	\$ 1,800,000
	Boardwalk	\$ 1,000,000
	Four Tree Island Ped Link	\$ 900,000
	TOTAL	\$14,050,000



Cost / Phasing of Park Improvements



Prescott Park Master Plan
January 11, 2017

Weston & Sampson™
DESIGN STUDIO

Cost / Phasing of Park Improvements

Total Potential Renovation Cost Averages about \$30/sf

Prescott Park Proper + Boardwalk: \$11,900,000

Four Tree Island + Pedestrian Link: \$2,150,000

Design + Permitting (15% of construction): \$2,000,000



Prescott Park Master Plan
January 11, 2017

Weston & Sampson™
DESIGN STUDIO

Prescott Park Master Plan



Breakout Sessions



Prescott Park Master Plan
January 11, 2017

Weston & Sampson™
DESIGN STUDIO