

Prescott Park Master Plan



City of Portsmouth
Weston & Sampson's Design Studio
Gene Bolinger, RLA
Cheri Ruane, RLA



Prescott Park Master Plan
December 5, 2016

Prescott Park Master Plan



Today's Presentation

1. Introduction
2. The Preferred Plan
3. Usage & Capacity
4. Costs & Funding
5. Phasing
6. Conclusion



Prescott Park Master Plan



1. Introduction

A. The Master Plan

B. A Park First Approach



The Master Plan | What it Means?

- What it represents? | What it doesn't represent?
 - And what happens next?



Park First Approach

- A waterfront park for the people of Portsmouth



- A waterfront park for the people of Portsmouth



- A waterfront park for the people of Portsmouth



- A venue for all arts



- A venue for all arts



- A venue for all arts



- A venue for all arts



- Front line defense to the impacts of climate change



- Front line defense to the impacts of climate change



- Front line defense to the impacts of climate change



Design Tenets

1. Recognition of City-owned nature of the park
2. Use “for park and recreational purposes” per the trust
3. Pedestrian through-route accessibility at all times
4. Maximize waterfront connection
5. Integrate coastal resilience/adaptation strategies
6. Maintain and enhance maritime historical connection
7. Integrate into the neighborhood
8. Ensure presence for theater, dance, music and visual arts (including public art)
9. Maintain different areas for a variety of park experiences
10. Plan for gatherings (informal and formal)
11. Maintain a Public Forum area
12. Include meaningful invitations for youth to play



Prescott Park Master Plan



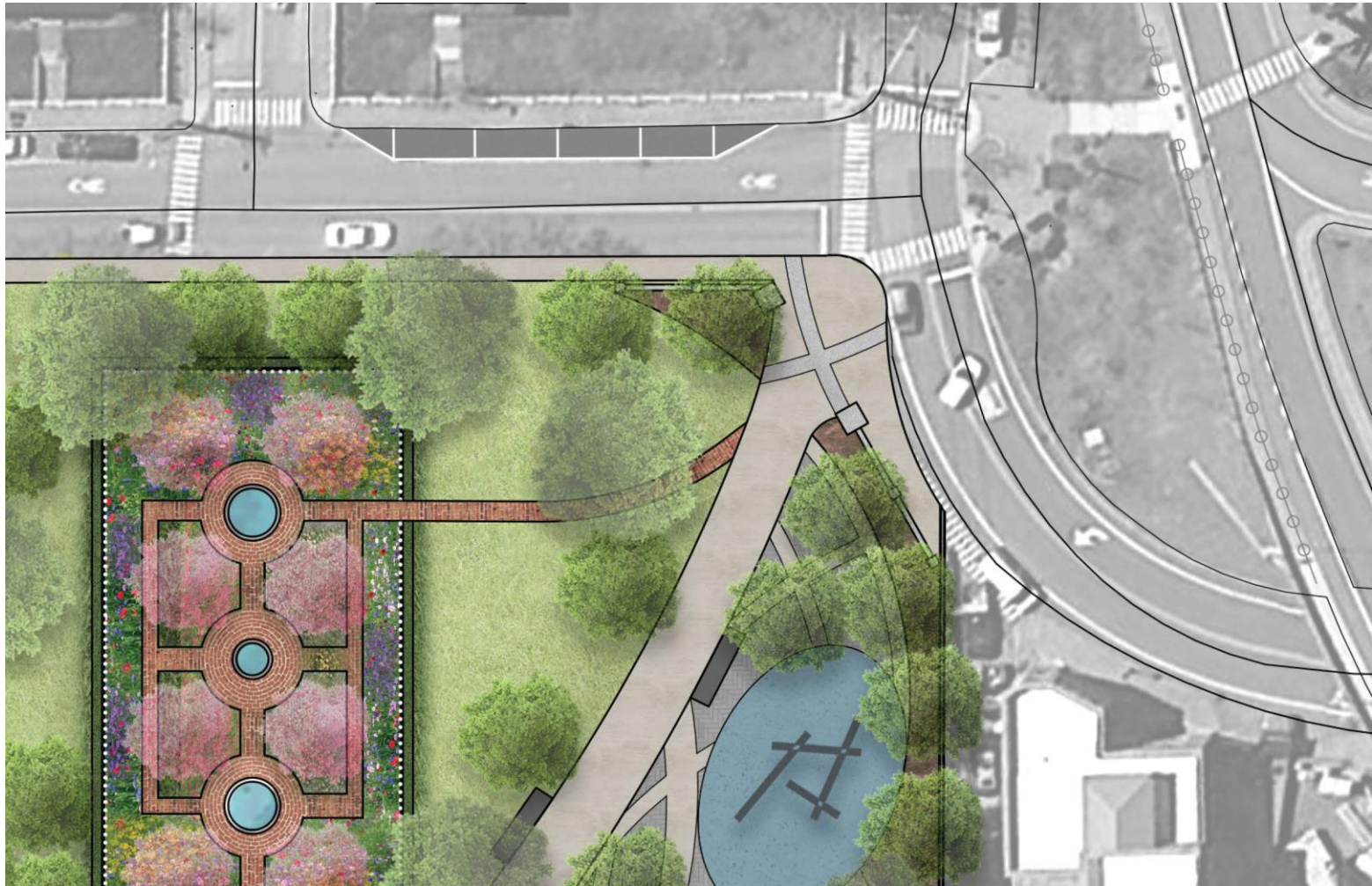
Prescott Park



Four Tree Island



Park Entrance at Marcy Street & State Street



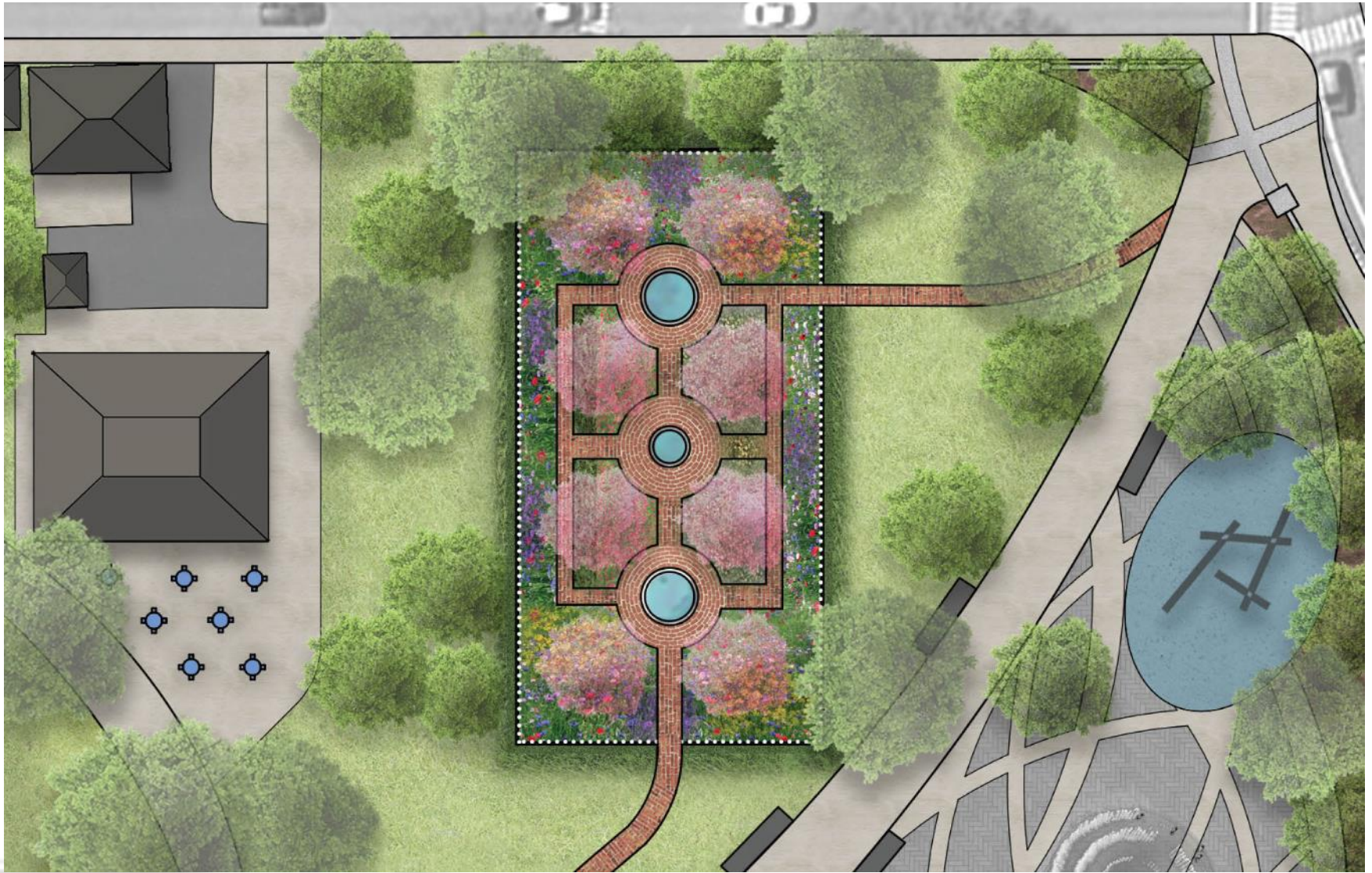
Park Entrance at Marcy Street & State Street



Public Art & Play



Formal Garden





Formal Garden



Prescott Park Master Plan
December 5, 2016

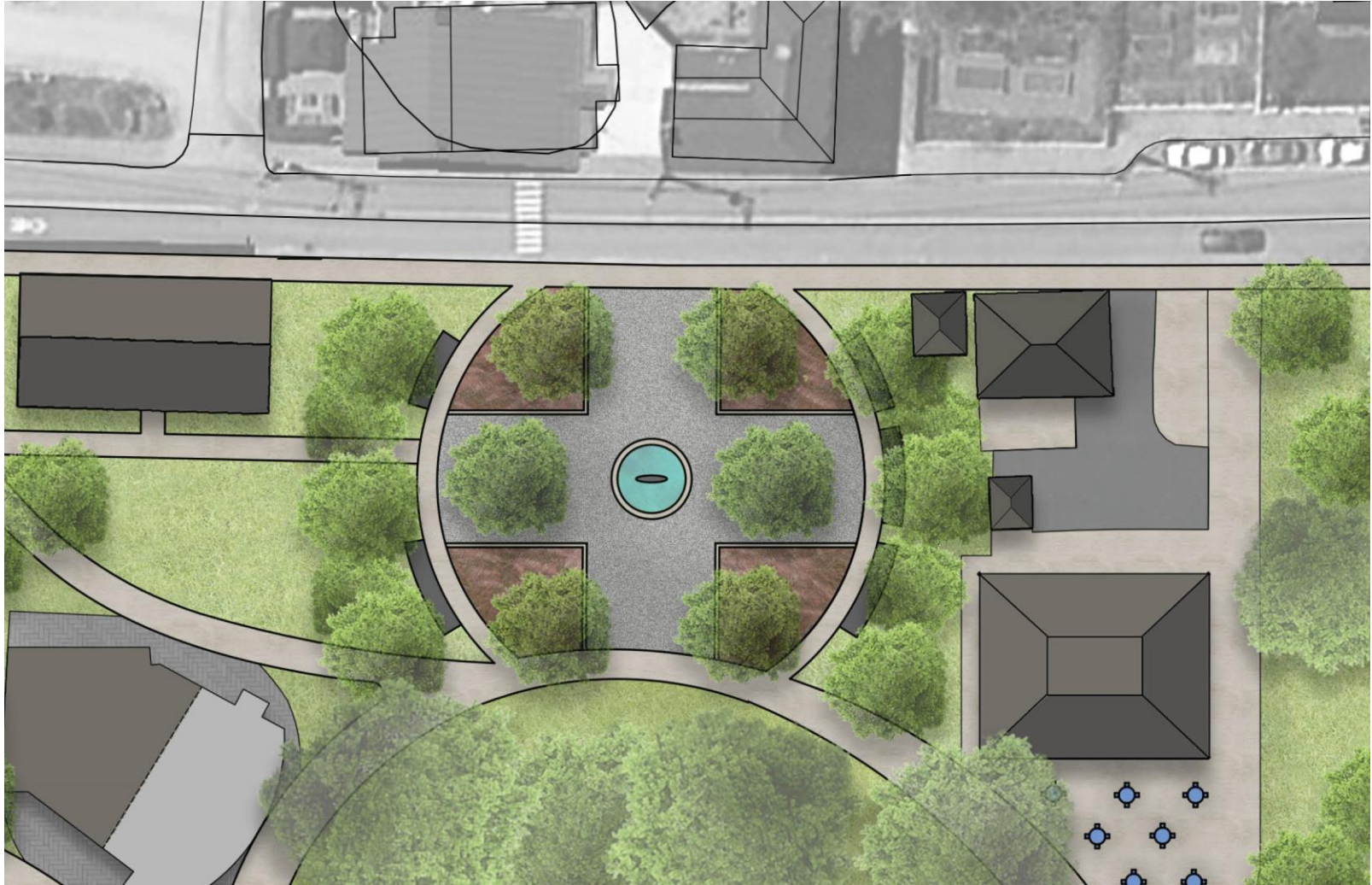


Formal Garden



Prescott Park Master Plan
December 5, 2016

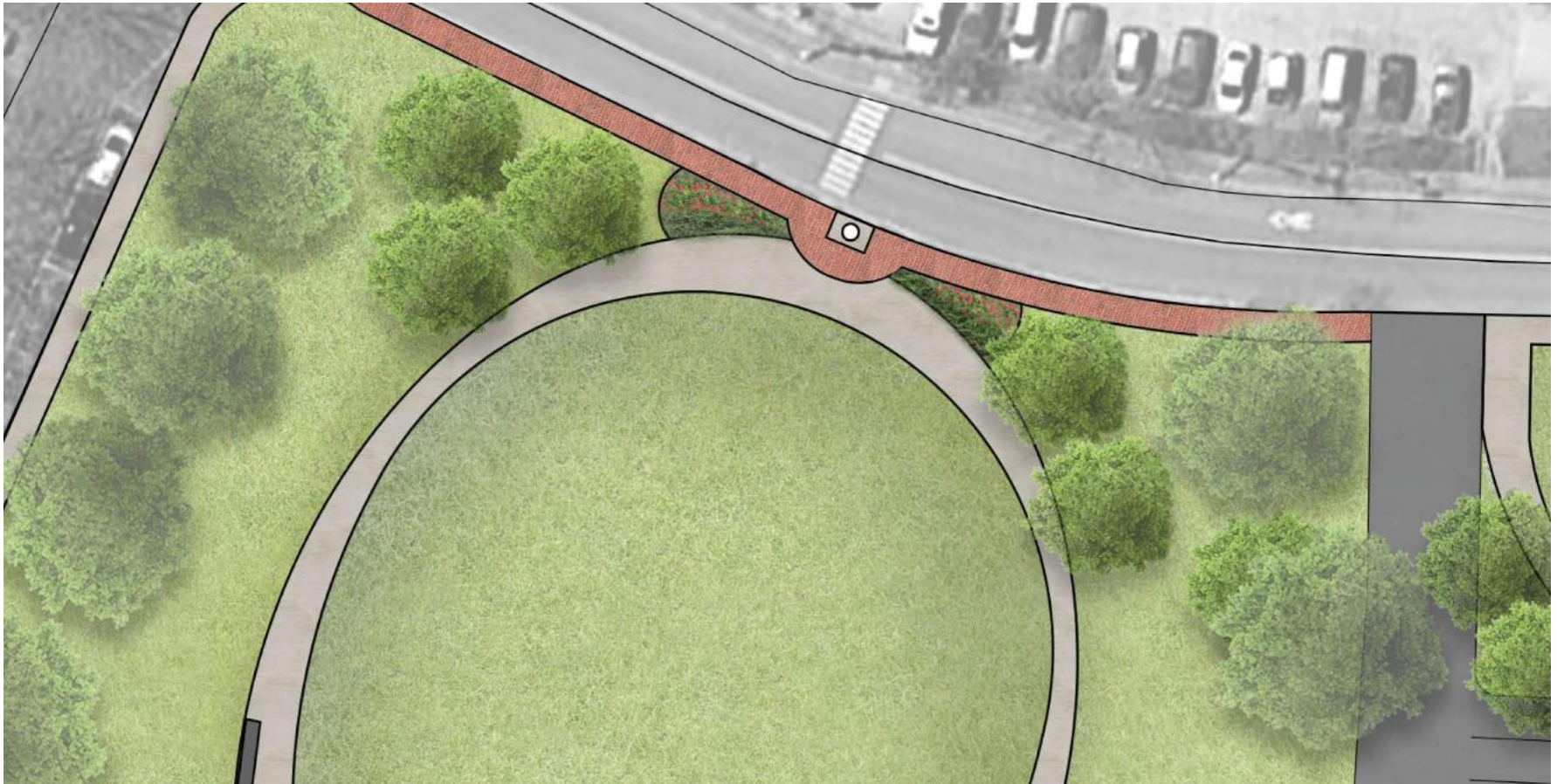
Hovey Fountain Entrance on Marcy Street



Hovey Fountain Entrance on Marcy Street



Liberty Pole Entrance





Prescott Park Master Plan
December 5, 2016

Liberty Pole Entrance

Page 2 of 31

Weston & Sampson™
DESIGN STUDIO

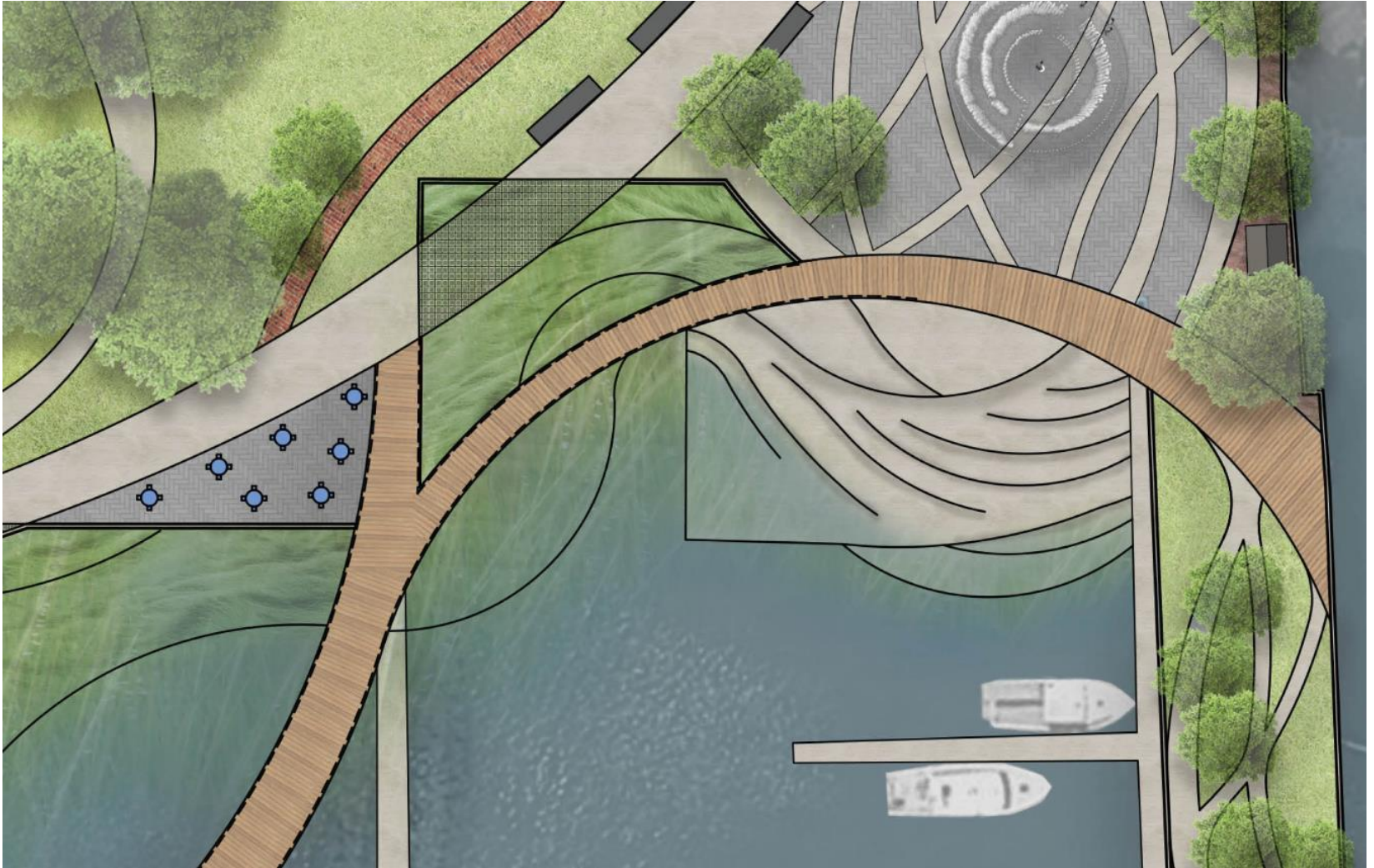
Display Gardens



Display Gardens



Waterfront



Waterfront



The Bowl



Stage Facility



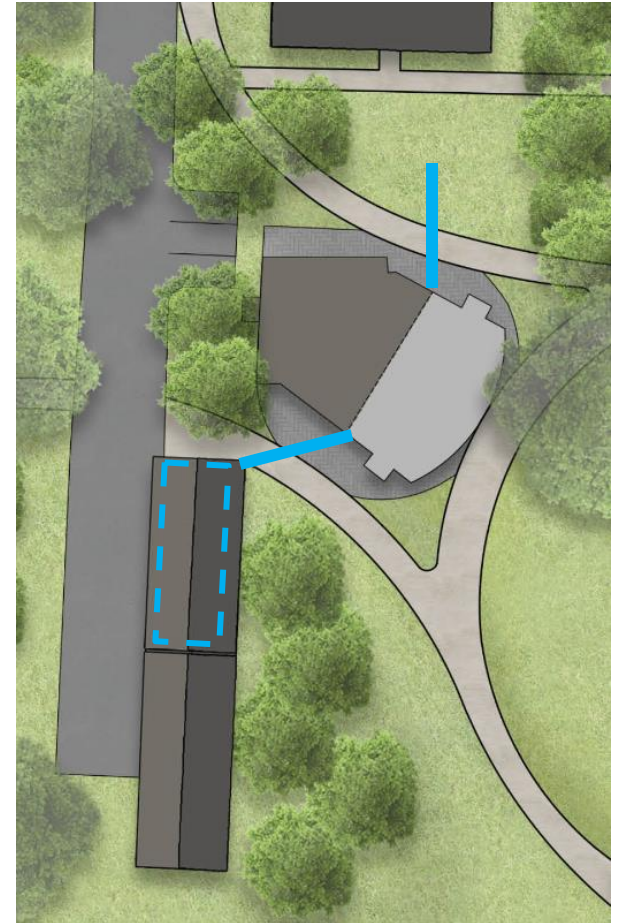
Stage Facility



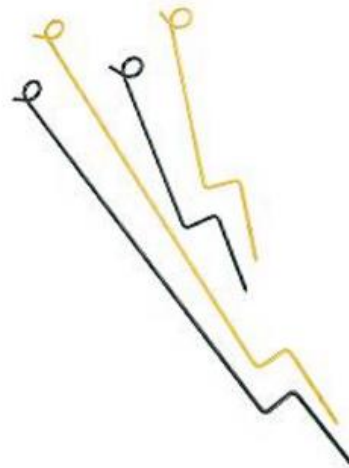
Stage Facility

Portable Stage Considerations

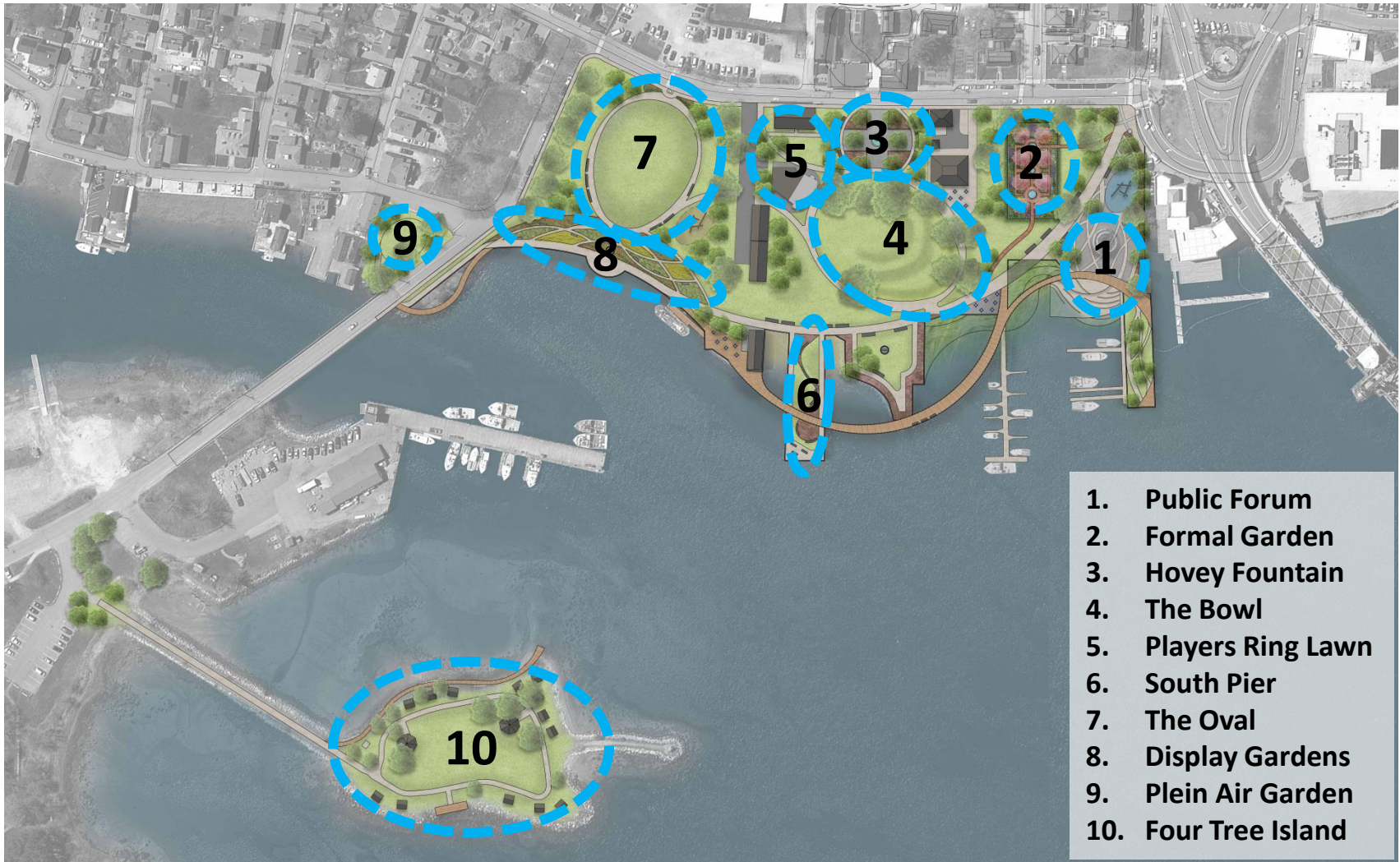
- Back stage area includes ADA access
- Will require use of a portion of the first floor of the Shaw Warehouse for dressing rooms and bathrooms.
- Screening at the sides of the stage
- Set up and take down
- Off-season storage
- Portable sound booth



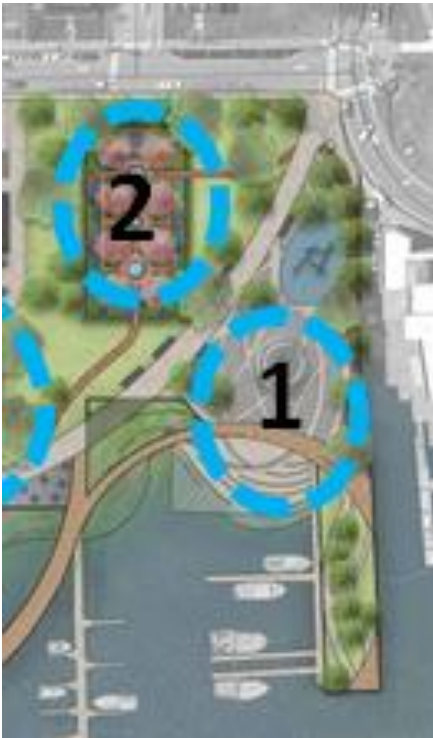
Crowd Control



Park Usage & Capacity Diagrams



Public Forum & Formal Garden



Formal Garden

Photography permitting only

12,000 SF

10 person capacity

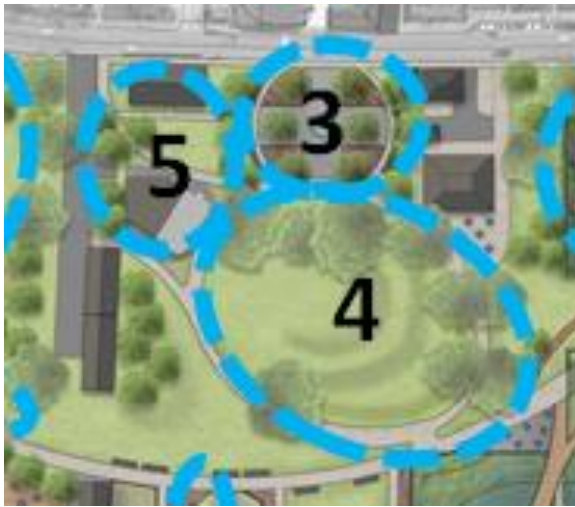
Public Forum

10,000 SF

500 person capacity



Hovey Garden, The Bowl & Players Ring Lawn



Hovey Garden

5,500 SF

50 person capacity

The Bowl

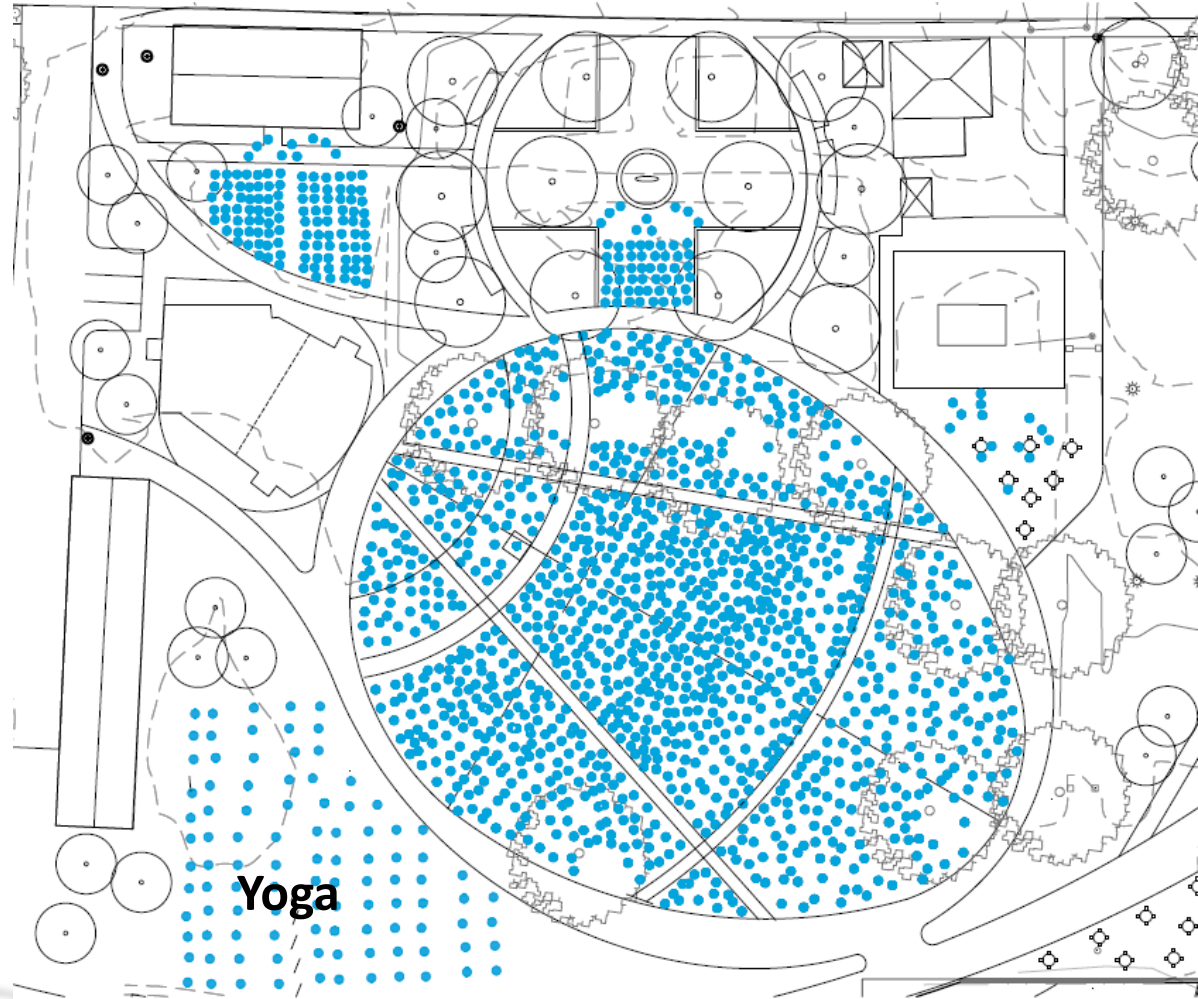
32,000 SF

1,200 person capacity

Players Ring Lawn

2,700 SF

100 person capacity



The Great Lawn, Display Gardens & Plein Air Garden



The Great Lawn

29,000 SF

600 person capacity

Display Gardens

2,000 SF

40 person capacity

Plein Air Garden

3,700 SF

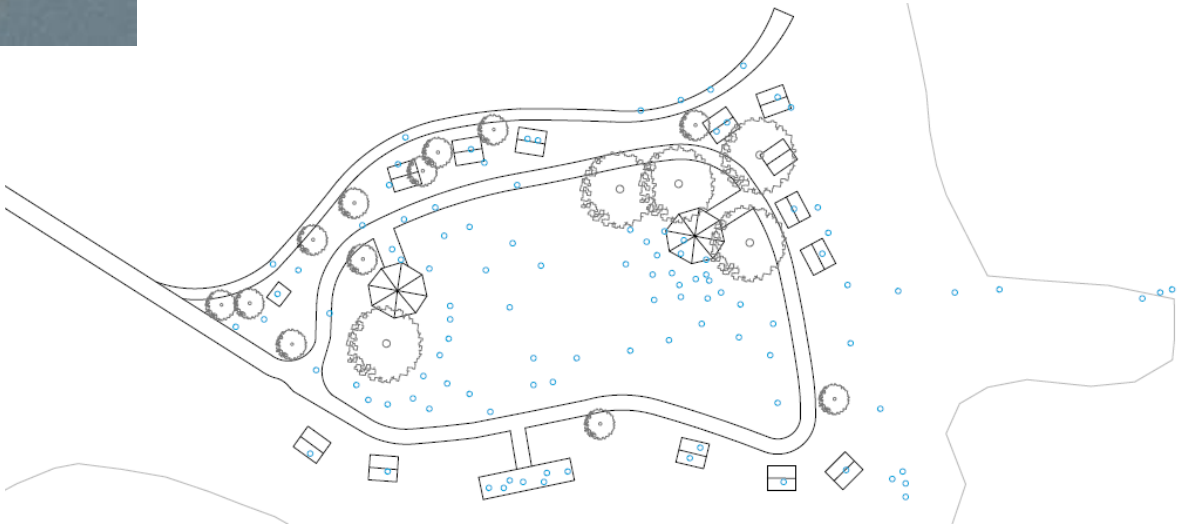
30 person capacity



Four Tree Island



Four Tree Island
63,000 SF
200 person capacity



Cost of Park Improvements

- Costs will be significant (whatever plan is adopted)
- Maintenance has been deferred
- Infrastructure needs are great



Cost of Park Improvements

- Areas and quantities are large
9-10 Acres | 1,500 LF +/- of street edge | 1,700 LF +/- of river edge
40,000-80,000 SF of pavements



Cost of Park Improvements

- Costs may be correspondingly large

Simple Lawn = \$2/SF | Asphalt = \$5/SF | Concrete = \$8-10/SF

Mid-level Pavement = \$18/SF | High End Pavement = \$25/SF



Cost of Park Improvements

- Total Potential Renovation Cost \$10-\$50/SF
Prescott Park Proper: 320,000 SF
Four Tree Island: 68,000 SF



Phasing

- **Key Considerations**

Urgency of Repair | Community Preferences | Geography

Building Momentum | Funding Sources | Funding Amount

Scope of Work | Type of Construction



Phasing



Phasing



Style Sheet



Conclusion

Questions / Answers

