

Prescott Park Master Plan



Gene Bolinger, RLA

Vice President | Spurr, Weston & Sampson's Design Studio

Cheri Ruane, RLA

Vice President | Spurr, Weston & Sampson's Design Studio



Prescott Park Master Plan
April 13, 2016

*Spurr*SM
Weston & Sampson's
DESIGN STUDIO

presentation outline

- Introduction of team
- Review of Project Understanding
- Review Project Work Plan
- Challenges of the Project Overall
- Scope of Work & Upcoming Milestones



Prescott Park Master Plan
April 13, 2016

SpurrSM
Weston & Sampson's[®]
DESIGN STUDIO

team | who we are

- . Bolinger | Ruane
- . Landscape architects
- . Architects
- . 450 others
- . **Career focus on the public open space realm**
- . Boston +
Portsmouth



Prescott Park Master Plan
April 13, 2016

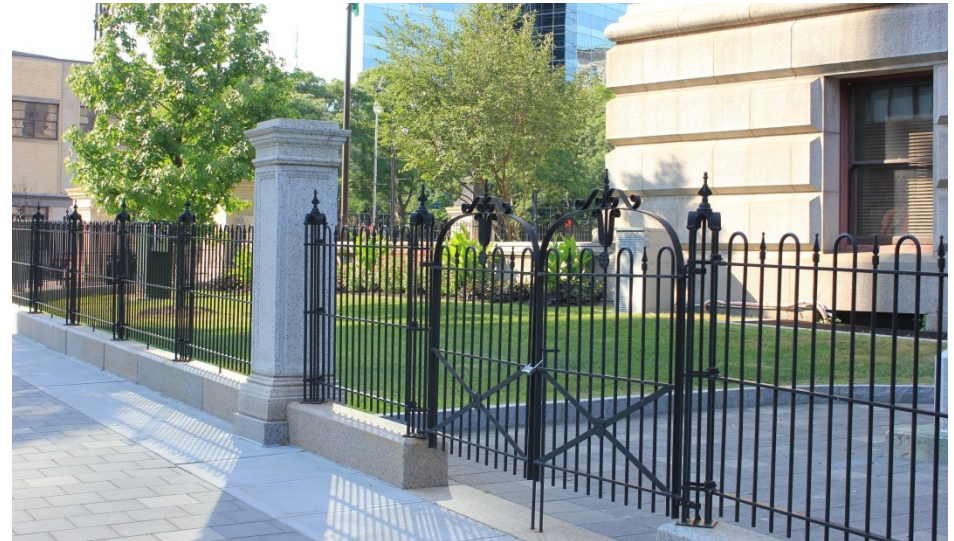
Spurr[™]
Weston & Sampson's
DESIGN STUDIO

body of work | what we do

- **Master planning (10K to 150K)**
- Final design (200K to \$10M)
- Permitting
- Bidding
- Construction administration
- Multi-phase



Spurr, Weston & Sampson's Design Studio



body of work | what we do

- **Historic**
- **Waterfront**
- **Urban**
- **Multi-use**
- **Multi-generational**
- **Inclusive**



Prescott Park Master Plan
April 13, 2016

SpurrSM
Weston & Sampson's
DESIGN STUDIO

our approach

It's all about...

- Portsmouth
- Downtown
- Strawberry Banke
- Piscataqua River
- Vertical lift bridge
- Inspiring beginning
- Legacy of the Prescott sisters
- What is possible



Prescott Park Master Plan
April 13, 2016

*Spurr*SM
Weston & Sampson's
DESIGN STUDIO

BOSTON COMMON – VARIOUS PROJECTS

city of boston, massachusetts

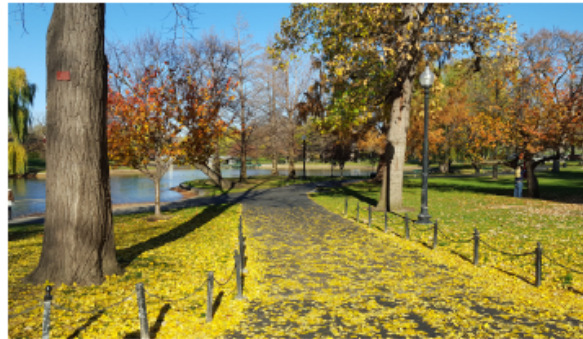


Prescott Park Master Plan
April 13, 2016

*Spurr*SM
Weston & Sampson's
DESIGN STUDIO

PUBLIC GARDEN – VARIOUS PROJECTS

city of boston, massachusetts

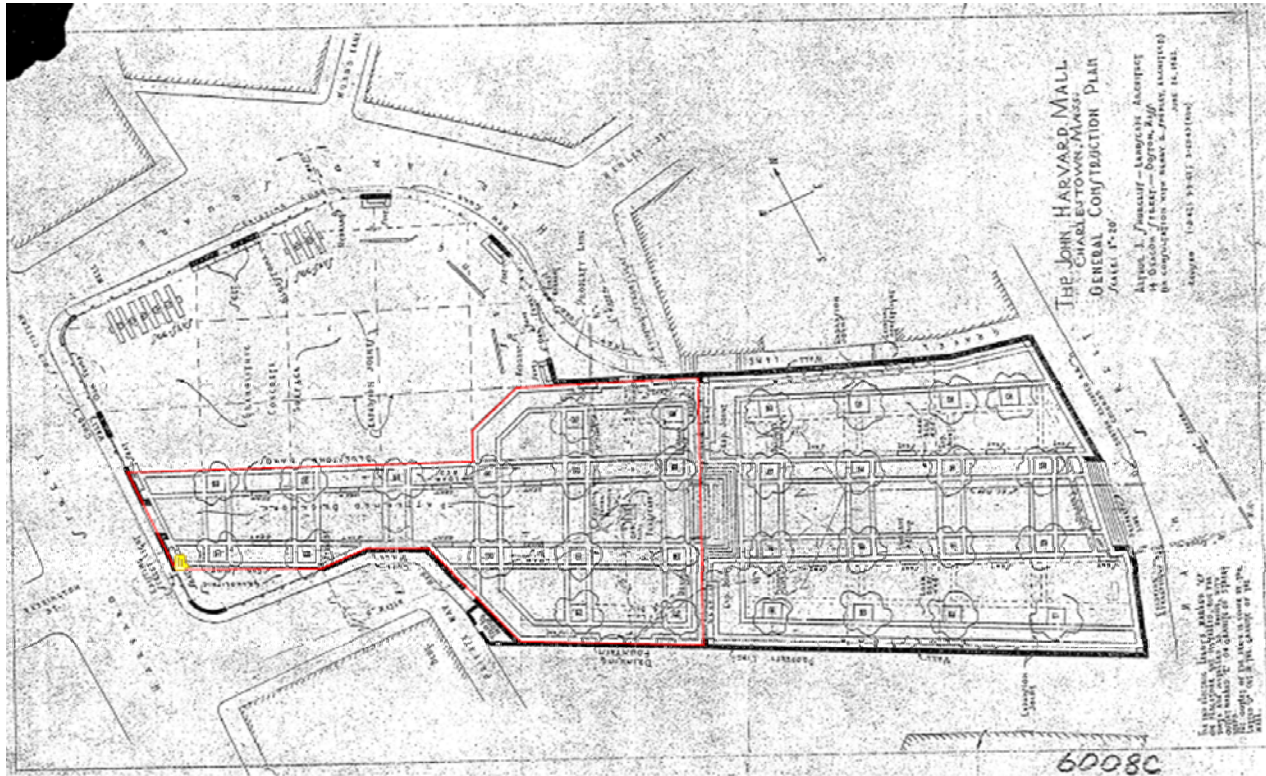


Prescott Park Master Plan
April 13, 2016

Spurr[™]
Weston & Sampson's
DESIGN STUDIO

JOHN HARVARD MALL MASTER PLAN

boston parks and recreation department



Prescott Park Master Plan
April 13, 2016

SpurrSM
Weston & Sampson's
DESIGN STUDIO



Prescott Park Master Plan
April 13, 2016



Prescott Park Master Plan
April 13, 2016



Prescott Park Master Plan
April 13, 2016

Spurr[™]
Weston & Sampson's
DESIGN STUDIO

RESTORATION OF HISTORIC WORCESTER COMMON

city of worcester, massachusetts

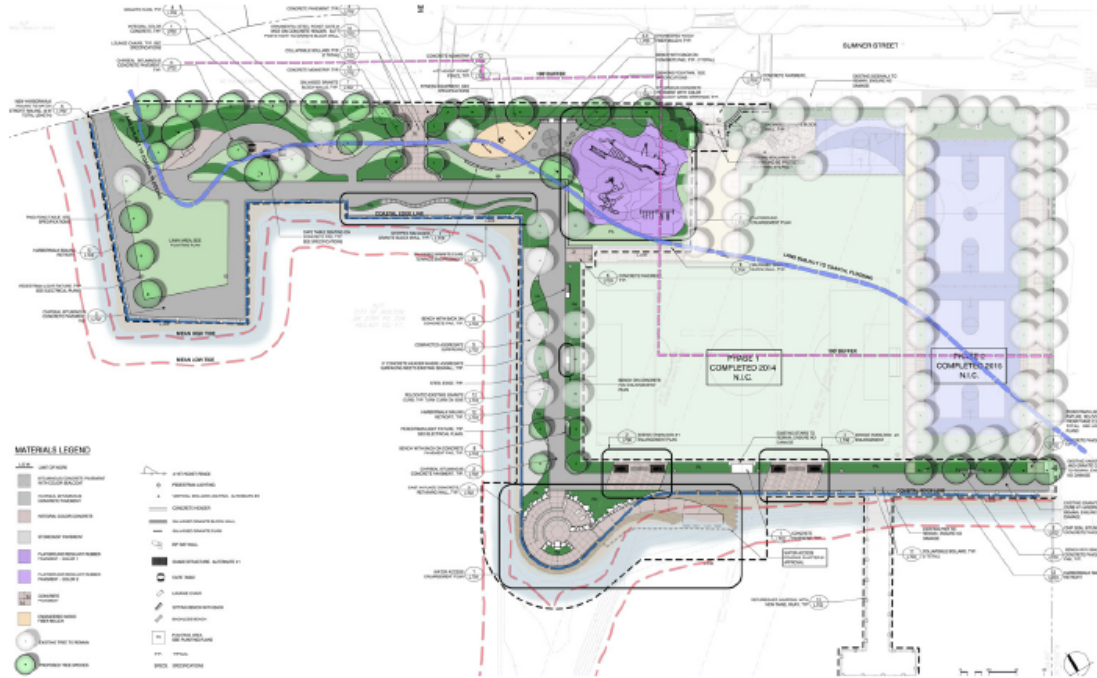


Prescott Park Master Plan
April 13, 2016

SpurrSM
Weston & Sampson's
DESIGN STUDIO

IMPROVEMENTS TO LOPRESTI PARK

boston parks and recreation department



Prescott Park Master Plan
April 13, 2016

SpurrSM
Weston & Sampson's
DESIGN STUDIO

MAYOR THOMAS M. MENINO PARK ENGINEERING AND DESIGN SERVICES

boston redevelopment authority



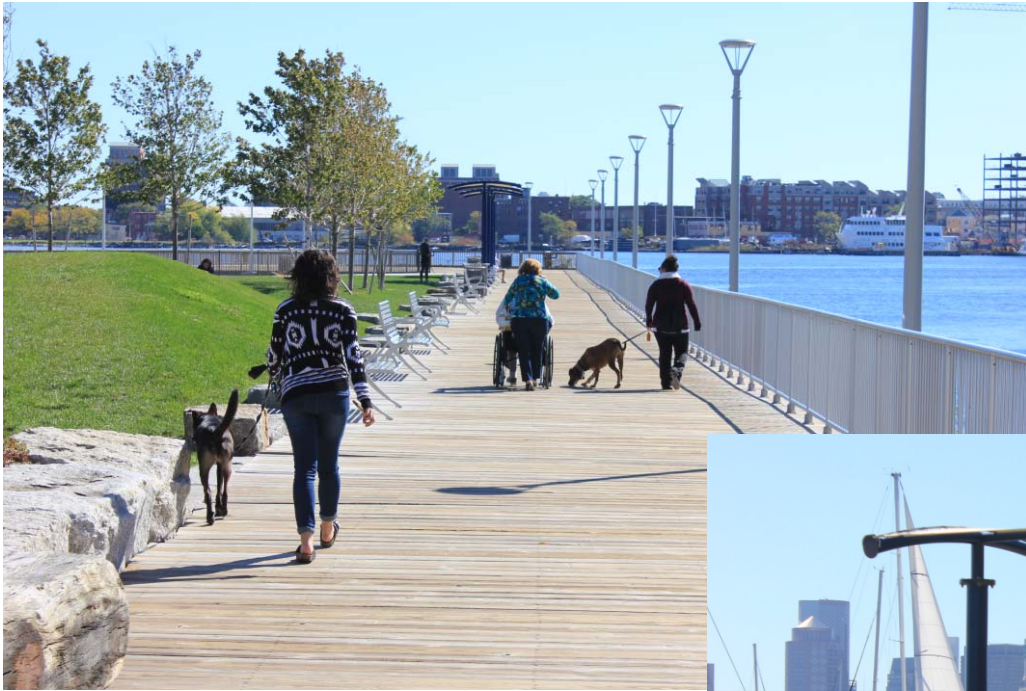
Prescott Park Master Plan
April 13, 2016

SpurrSM
Weston & Sampson's
DESIGN STUDIO



Prescott Park Master Plan
April 13, 2016

SpurrSM
Weston & Sampson's
DESIGN STUDIO



Prescott Park Master Plan
April 13, 2016

SpurrSM
Weston & Sampson's[®]
DESIGN STUDIO

CERES STREET WATERFRONT PARK

city of portsmouth, new hampshire



Prescott Park Master Plan
April 13, 2016

SpurrSM
Weston & Sampson's
DESIGN STUDIO

project understanding



- . **Most important** project of this generation
- . Legacy project that continues the rich history of access to public open space established by Prescott sisters
- . Master planning process of a wildly **successful place**
- . **Breakthrough possibilities.**



Prescott Park Master Plan
April 13, 2016

*Spurr*SM
Weston & Sampson's
DESIGN STUDIO

project understanding

- Infrastructure systems within the park in need of capital improvement:

- Lighting
- Pavement
- Irrigation
- Buildings



project understanding

Infrastructure systems within the park in need of capital improvement:

- Fencing
- Fountains
- Site furnishings
- Landscape plantings
- Shoreline armoring

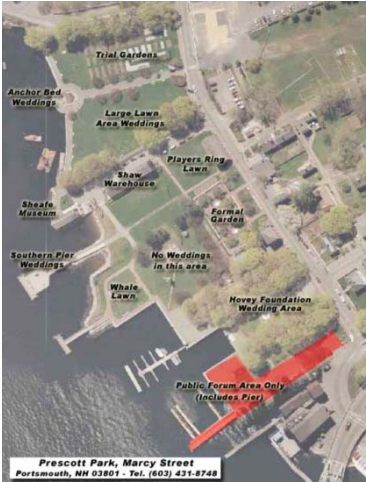


Prescott Park Master Plan
April 13, 2016

Spurr[™]
Weston & Sampson's[®]
DESIGN STUDIO

work plan

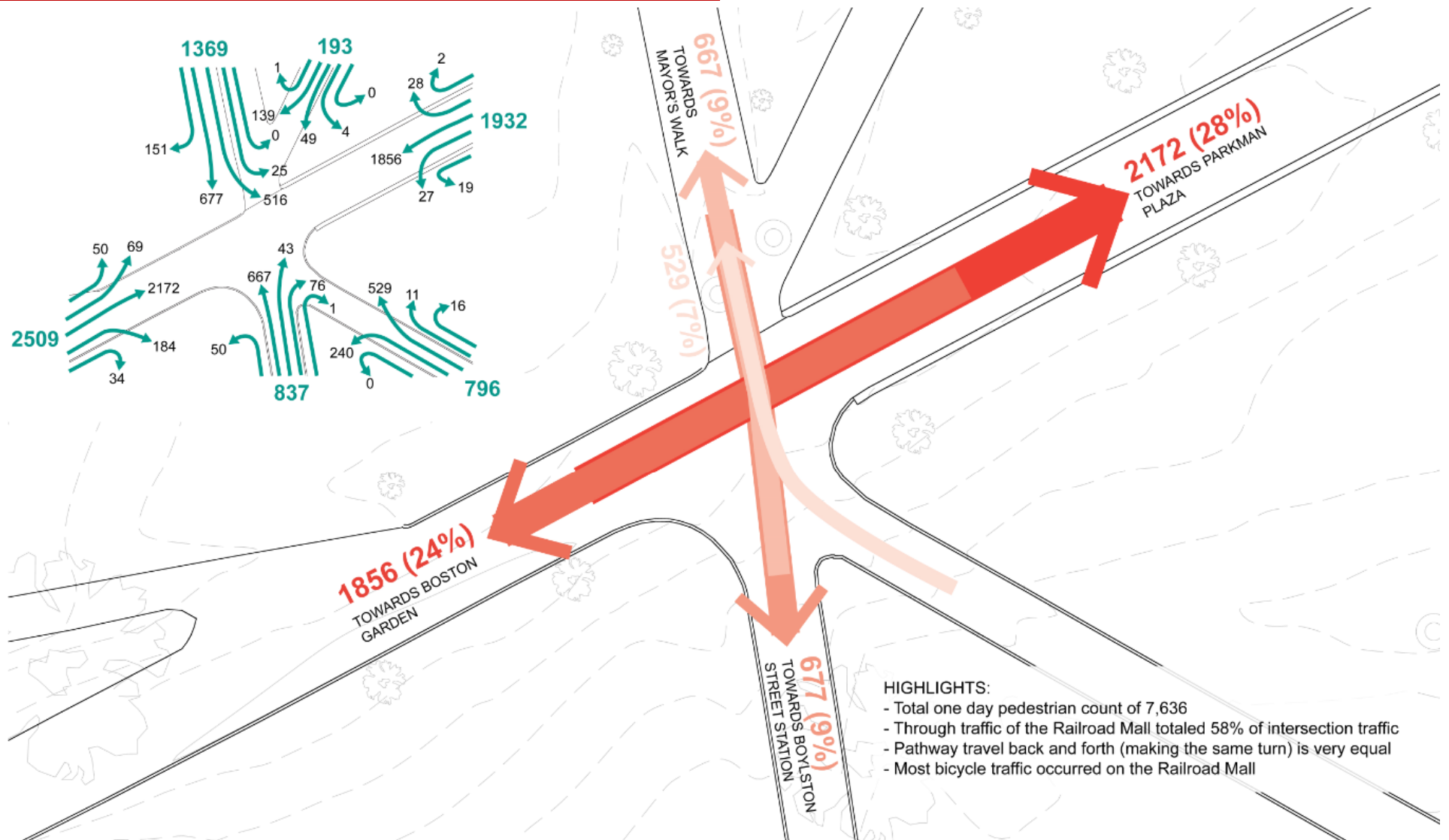
- Existing Conditions and Uses



Prescott Park Master Plan
April 13, 2016

SpurrSM
Weston & Sampson's[®]
DESIGN STUDIO

work plan



- HIGHLIGHTS:**
- Total one day pedestrian count of 7,636
 - Through traffic of the Railroad Mall totaled 58% of intersection traffic
 - Pathway travel back and forth (making the same turn) is very equal
 - Most bicycle traffic occurred on the Railroad Mall

BOSTON COMMON PEDESTRIAN COUNTS
 Intersection S of Parkman Bandstand - CUMULATIVE 1 DAY TOTAL



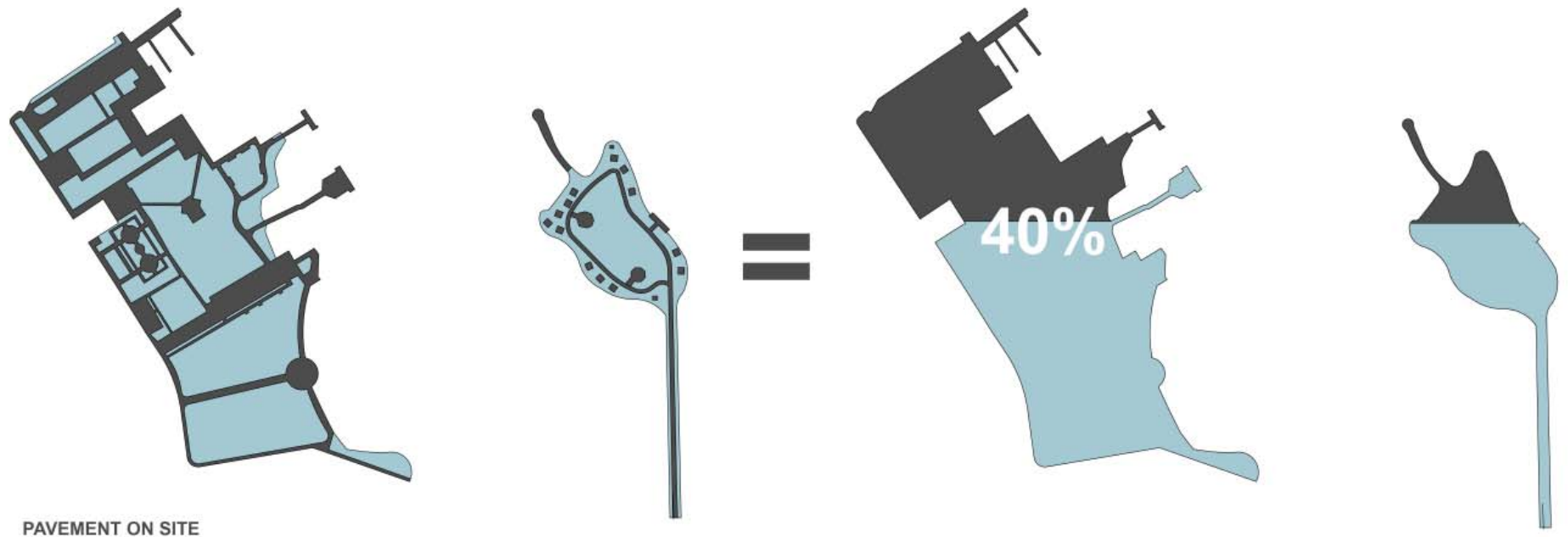
work plan

- Existing Conditions and Uses



work plan

- Existing Conditions and Uses



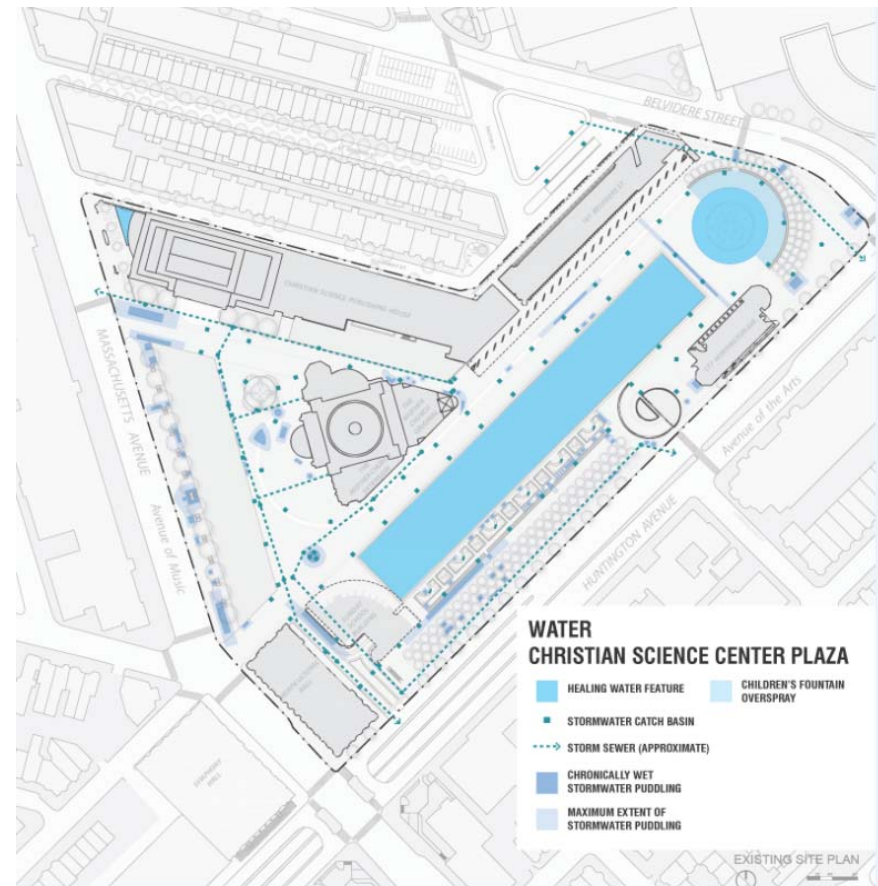
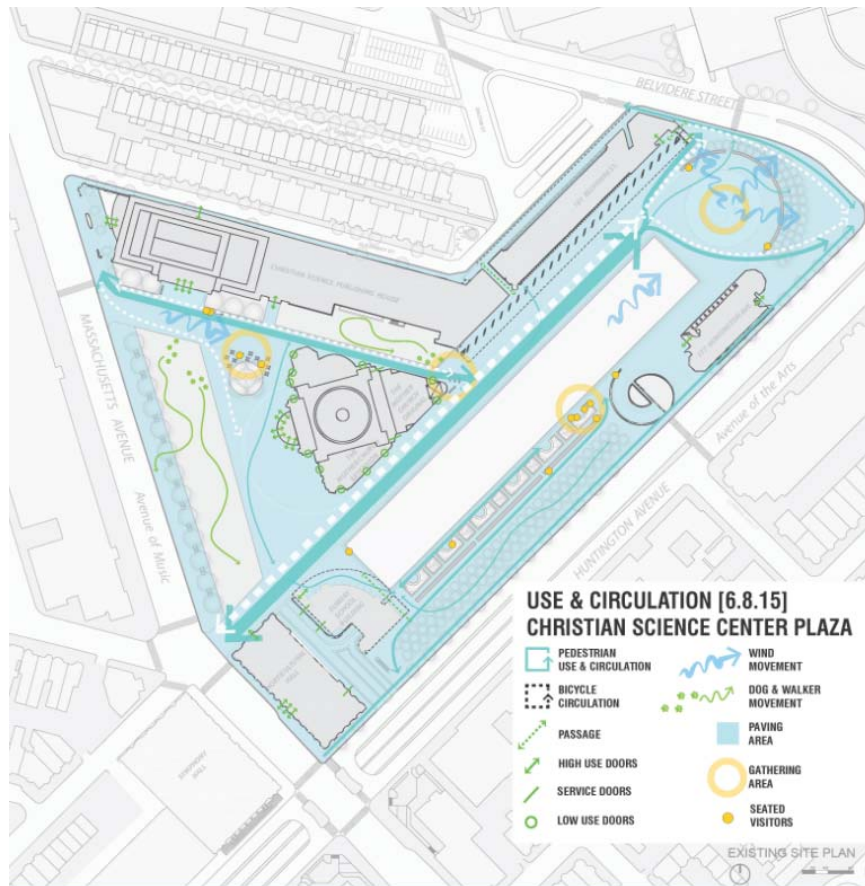
work plan

- Public participation



Prescott Park Master Plan
April 13, 2016

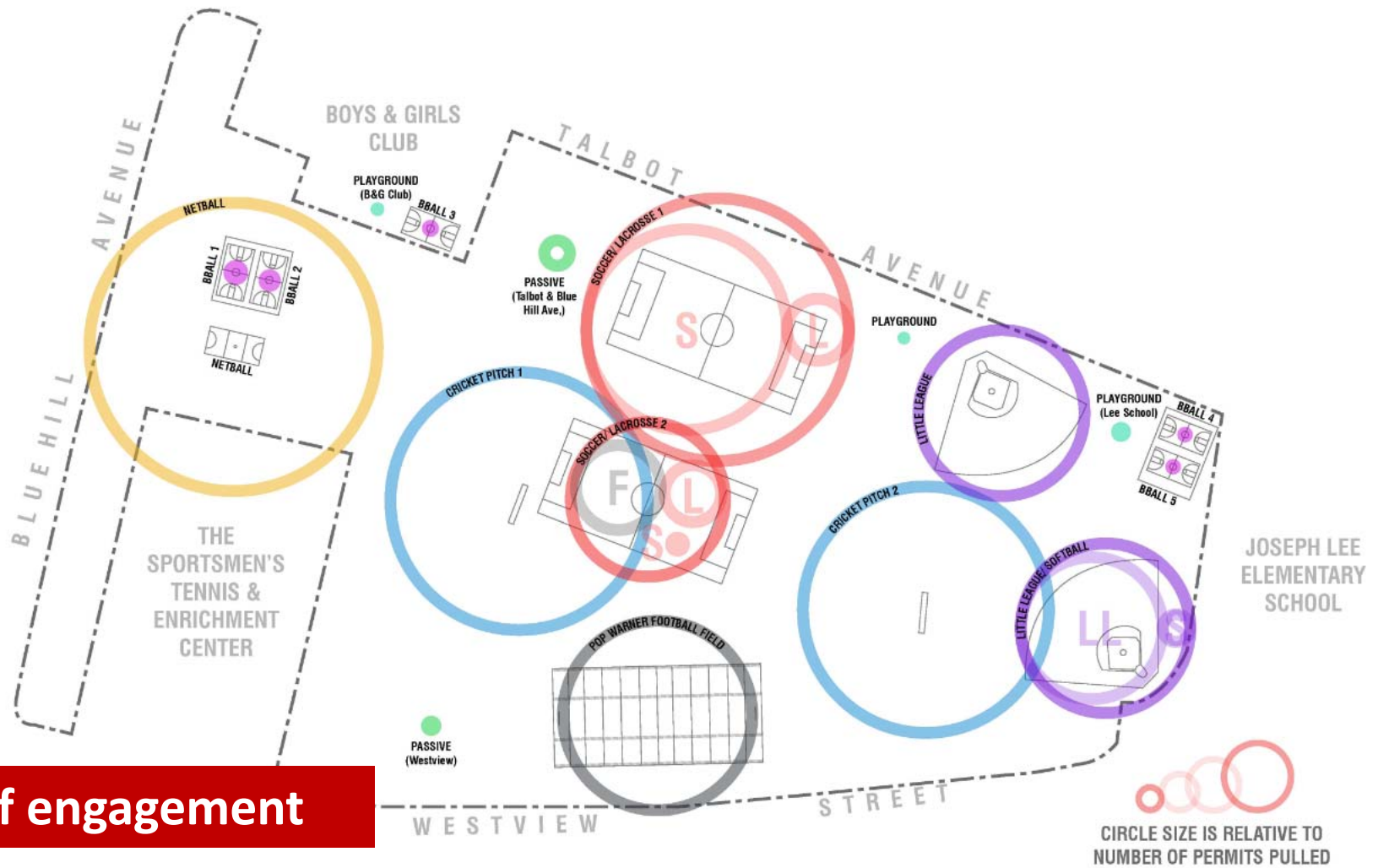
SpurrSM
Weston & Sampson's
DESIGN STUDIO



tools of engagement



Prescott Park Master Plan
April 13, 2016



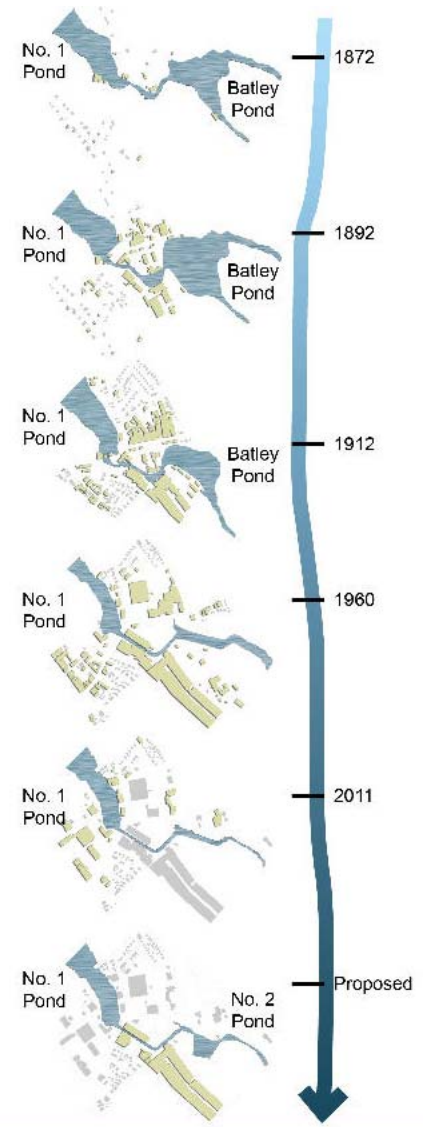
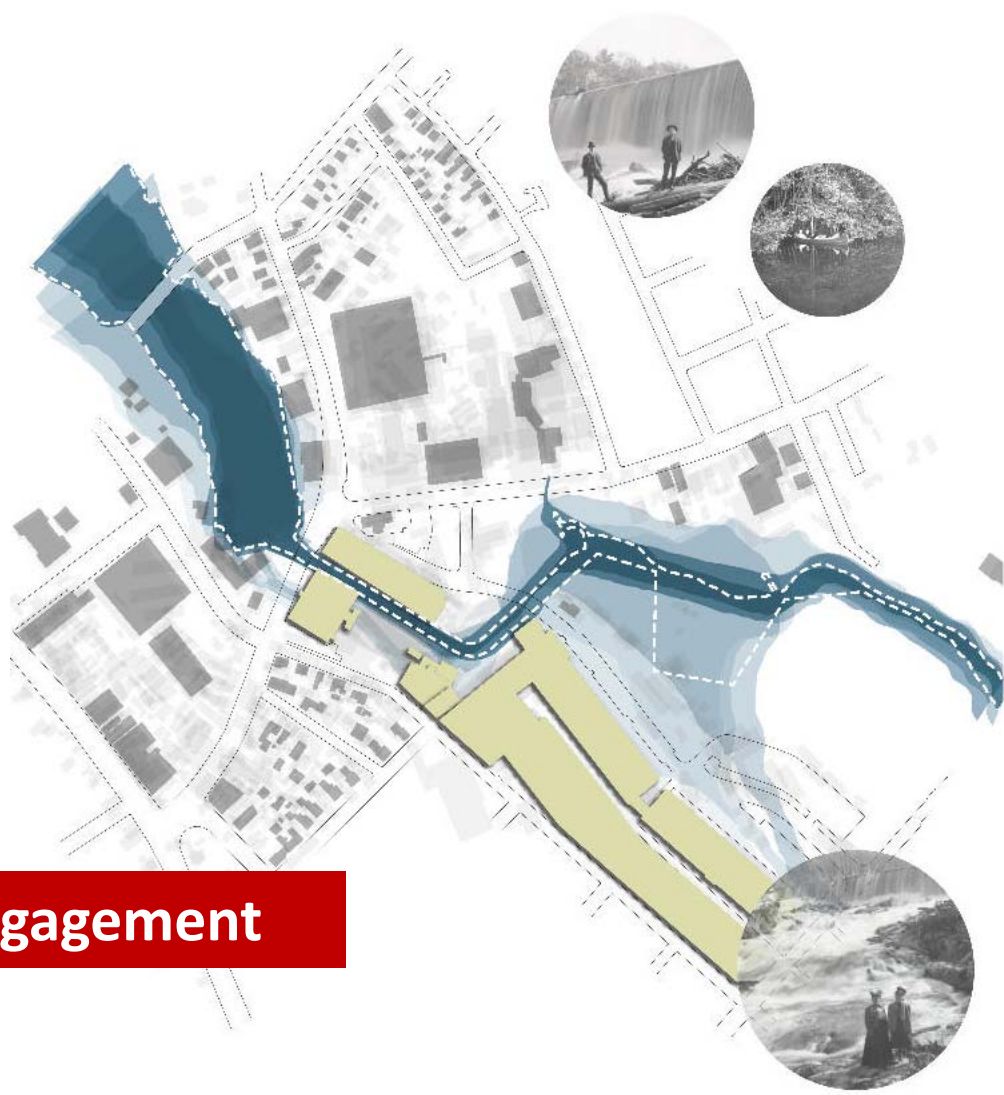
tools of engagement



Prescott Park Master Plan
April 13, 2016

SpurrTM
Weston & Sampson's
DESIGN STUDIO

tools of engagement



Prescott Park Master Plan
April 13, 2016





tools of engagement



- Graphic support
- Online forums
- Design workshops
- Farmers market table
- Audience response systems (digital)
- Audience voting (analog)

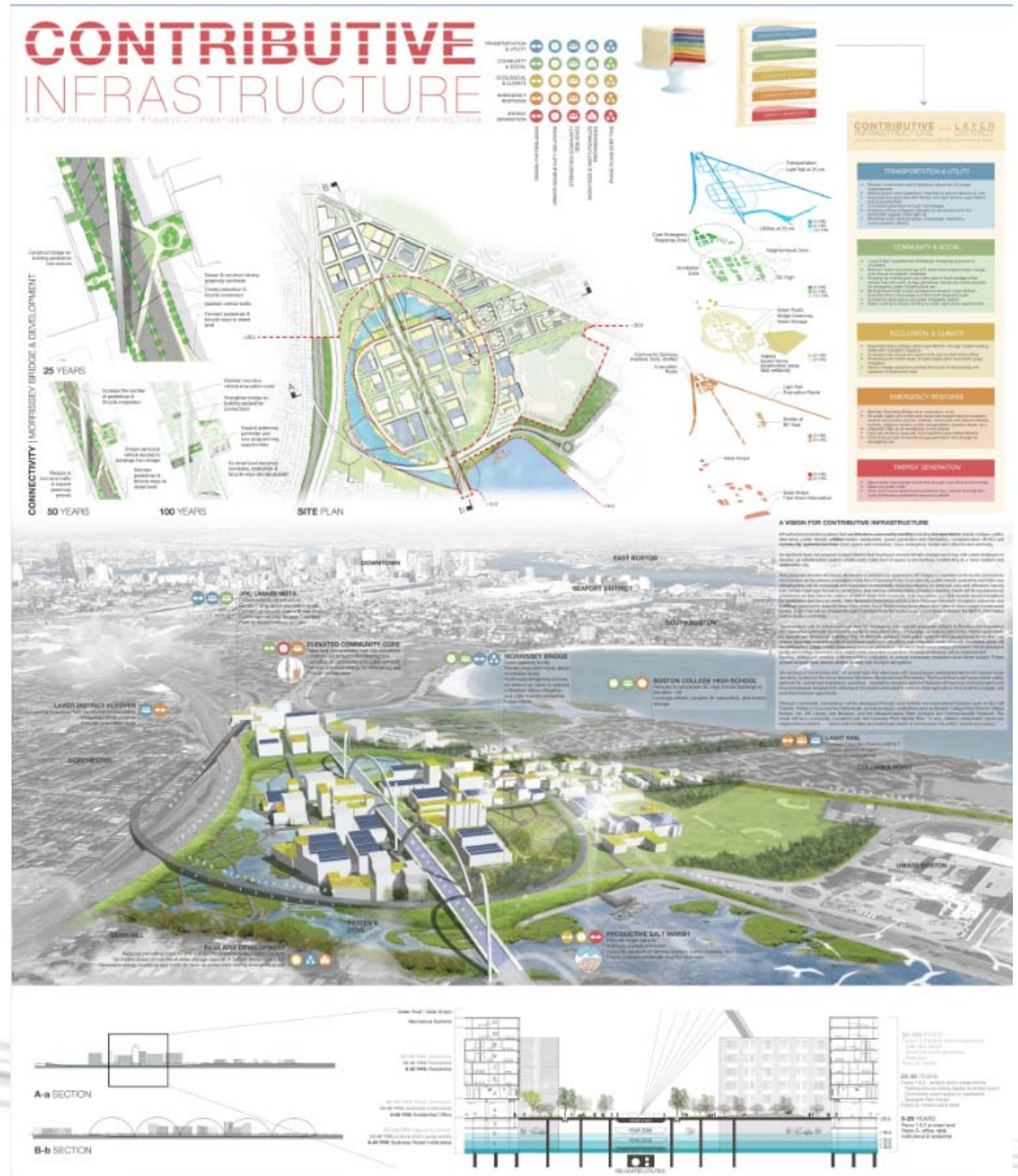


Prescott Park Master Plan
April 13, 2016

*Spurr*SM
Weston & Sampson's
DESIGN STUDIO

- Living with Water
- Design Competition
- Climate Change and Rising Tides
- Understanding Resilient Infrastructure

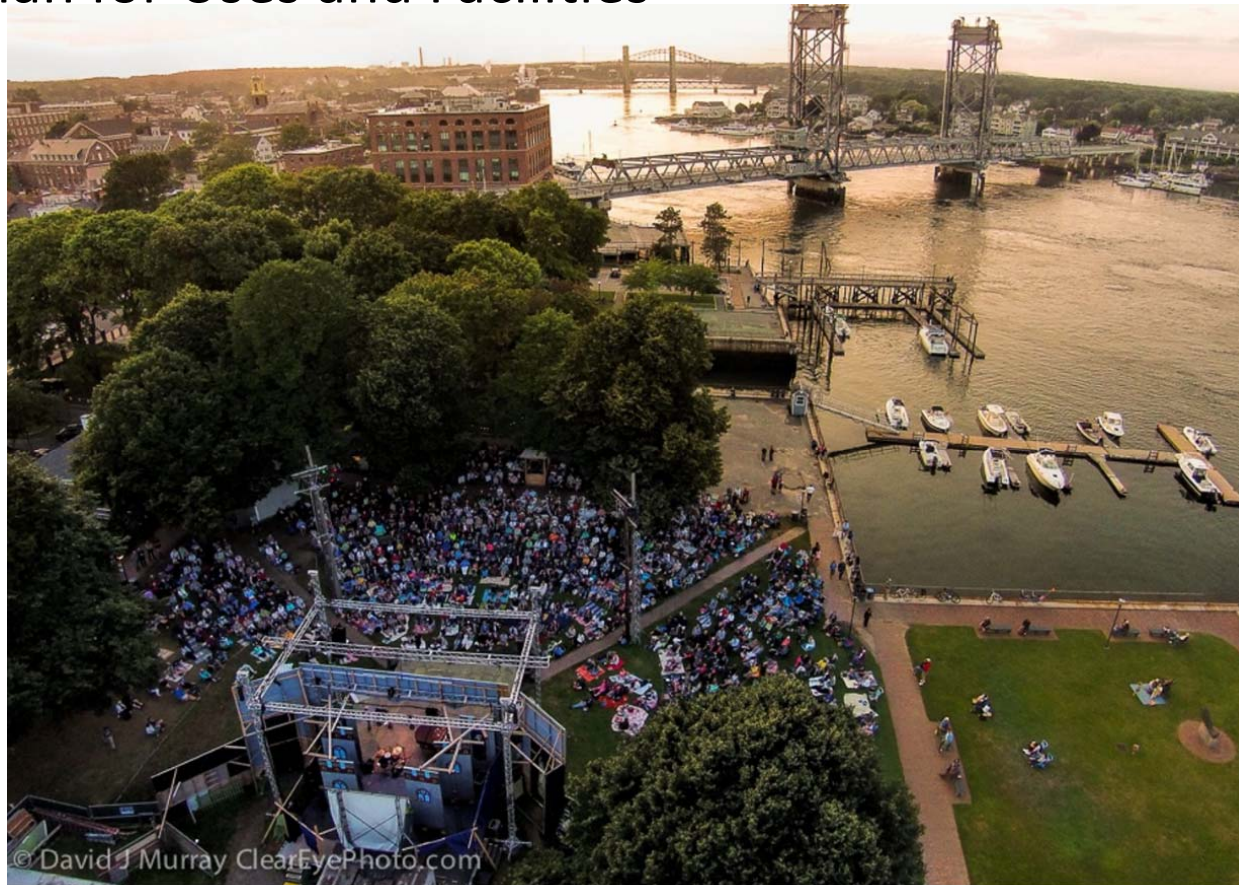
work plan



Prescott Park Master Plan
April 13, 2016

work plan

- Master Plan for Uses and Facilities



Prescott Park Master Plan
April 13, 2016

SpurrSM
Weston & Sampson's
DESIGN STUDIO

biggest challenges

Infrastructure to Support Special Events-

- **Challenge:** Special events have a significant impact on the park.
- **Solution:** Intelligent infrastructure design that is seamlessly integrated into the park.

Integrating the Neighborhood into the Plan-

- **Challenge:** City-wide resource with immediate proximity to residential fabric.
- **Solution:** Enroll the neighbors in the master plan process, listen and lead a productive dialog that results in positive outcomes.

Funding Park Upgrades-

- **Challenge:** Costs for full park improvement will be significant.
- **Solution:** Creative funding scenarios that involve phased capital spending supported by multiple public and private sources.



Project Phases / Scope of Work

Project Phases

- Site Analysis
- Public Input & Participation
- Master Plan & Facilities Plan

Timeline

- Spring / Summer
- Project Duration
- Fall / Winter



Prescott Park Master Plan
April 13, 2016

*Spurr*SM
Weston & Sampson's
DESIGN STUDIO

Project Phases / Scope of Work

Site Analysis

- **Project Kick-off**
- **Existing Site Inventory & Analysis**
- **Regularly Scheduled Committee Updates**
- **Park Usage and Pedestrian Counts**
- **Committee Presentation of Opportunities and Constraints**

Schedule

- **April 13, 2016**
- **April – May 2016**
- **Project Duration**
- **June 2016 + additional special events**
- **July 2016**



Project Phases / Scope of Work

Public Input & Participation

- **Public Participation Plan Development**
- **Community Information & Listening Session***
- **Community Conceptual Master Plan Design Presentation***
- **Community Preferred Master Plan Presentation***
- **Design Forensics Site Walk with DPW and Site Staff***

Schedule

- **April / May 2016**
- **May 2016**
- **September 2016**
- **October / November 2016**
- **November 2016**



Project Phases / Scope of Work

Master Plan & Facilities Plan

- Draft Master Plan & Facilities Plan Submitted
- Review by City and Blue Ribbon Committee
- Final Master Plan & Facilities Plan Issued
- Project Close Out

Schedule

- October 2016
- November 2016
- October 2016
- December 2016



Thank you!



General Discussion



Prescott Park Master Plan
April 13, 2016

*Spurr*SM
Weston & Sampson's
DESIGN STUDIO