

Public Information Meeting

Maplewood Avenue &
Adjacent Areas
Portsmouth, NH



December 9, 2015

Agenda:

- Introduction
- Project Need
- Project Funding & Implementation
- Anticipated Project Schedule
- Meeting Purpose
- Project Limits
- Existing Conditions
- Design Objectives
- Public Input/Group Discussion
- Next Steps



Introduction – Who is Involved?

- City Staff
 - Planning Department
 - Department of Public Works
 - Highway Division
 - Water Division
 - Sewer Division
 - Public Safety
 - Police Department
 - Fire Department
- Engineering Consultants
 - Greenman-Pedersen, Inc.
 - Weston & Sampson, Inc.
 - Sub-Consultants
- Stakeholders
 - Residents
 - Business Owners



Project Need:

- Primary Need: Water Main Replacement on Maplewood Avenue
 - Recommended in 2013 Water Master Plan
- Identified Adjacent Areas in Need of Work
 - Added to Overall Project
- Full Roadway and Utility Reconstruction Where Appropriate
- Complete Street Type Design
 - City Council Policy
- Implementation of 2014 Bicycle & Pedestrian Plan



Project Funding & Implementation:

- Project was Funded Through Previous Capital Improvement Plans
- Limits/Phases of Construction Will be Defined at the End of Preliminary Design Based on Cost Estimates and Coordination with Other Projects



Anticipated Project Schedule:

- Initial Public Meeting.....December 9, 2015
- Maplewood Site Walk.....December 19, 2015
- Second Public Meeting.....February 2016
- Third Public Meeting.....March/April 2016
- Complete Preliminary Design.....May 2016
- Complete Final Design.....Summer 2016
- Advertise for Construction.....Fall 2016
- Begin Construction.....Fall 2016/Spring 2017

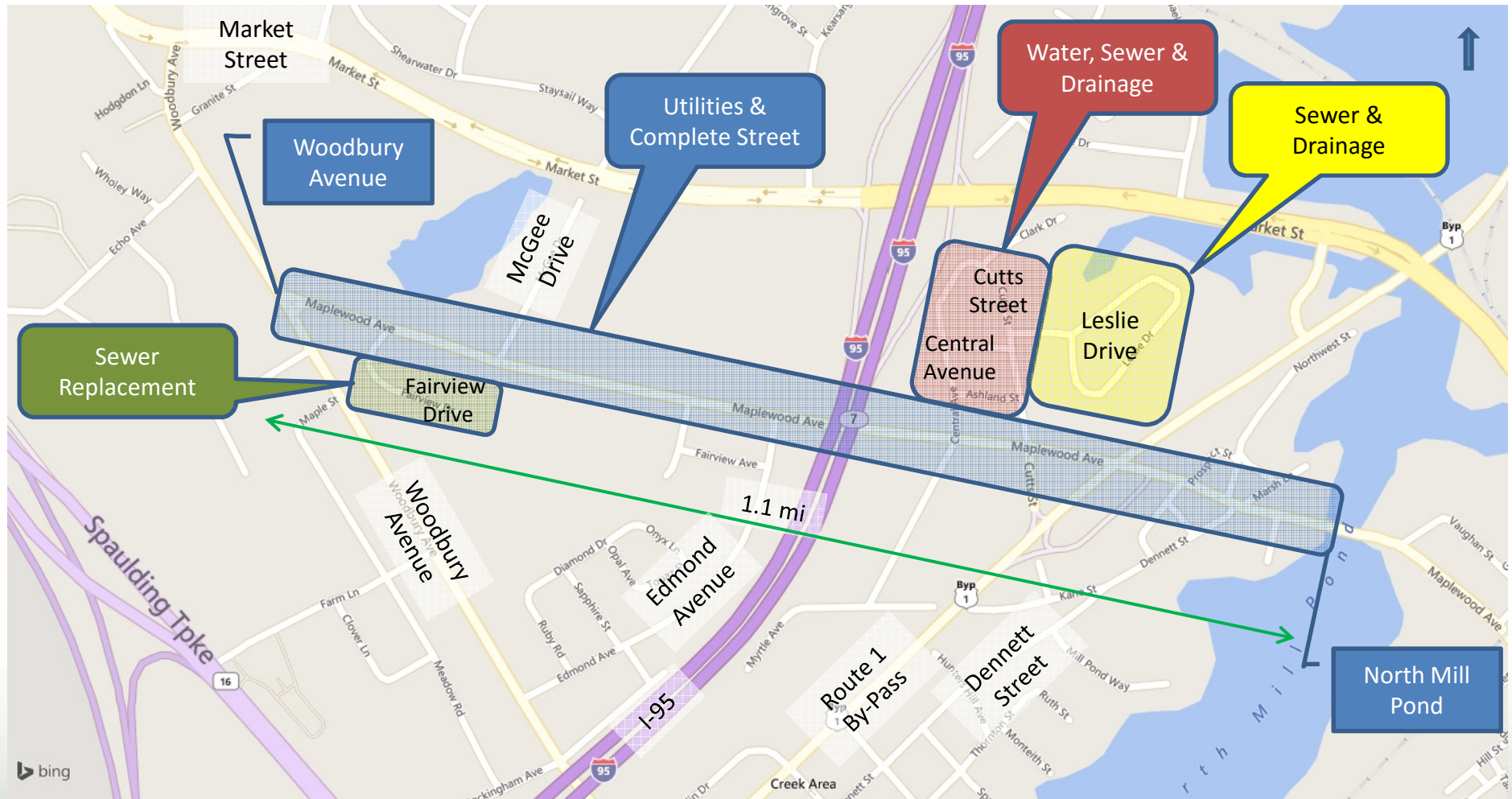


Meeting Purpose:

- Kickoff Conceptual Design
- We Need Your Input:
 - Issues
 - Concerns
 - Needs
- Feedback:
 - Comment Forms
 - Breakout Groups
 - Note Plans
 - Post Meeting Input



Project Limits



Existing Conditions:

- Posted Speed Limit – 25 mph
- Average Daily Traffic – 5,000 (2008)
- Peak Hour Traffic – 500 (2008)
- No Parking Regulation
- Truck Restriction West of Central Ave

What do I see?

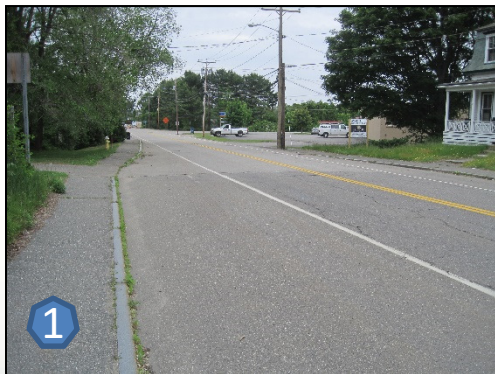
- Cars...Pedestrians...Bicycles
- Residential & Commercial Uses
- Entry to Downtown
- Trees
- Utilities
- Neighborhood



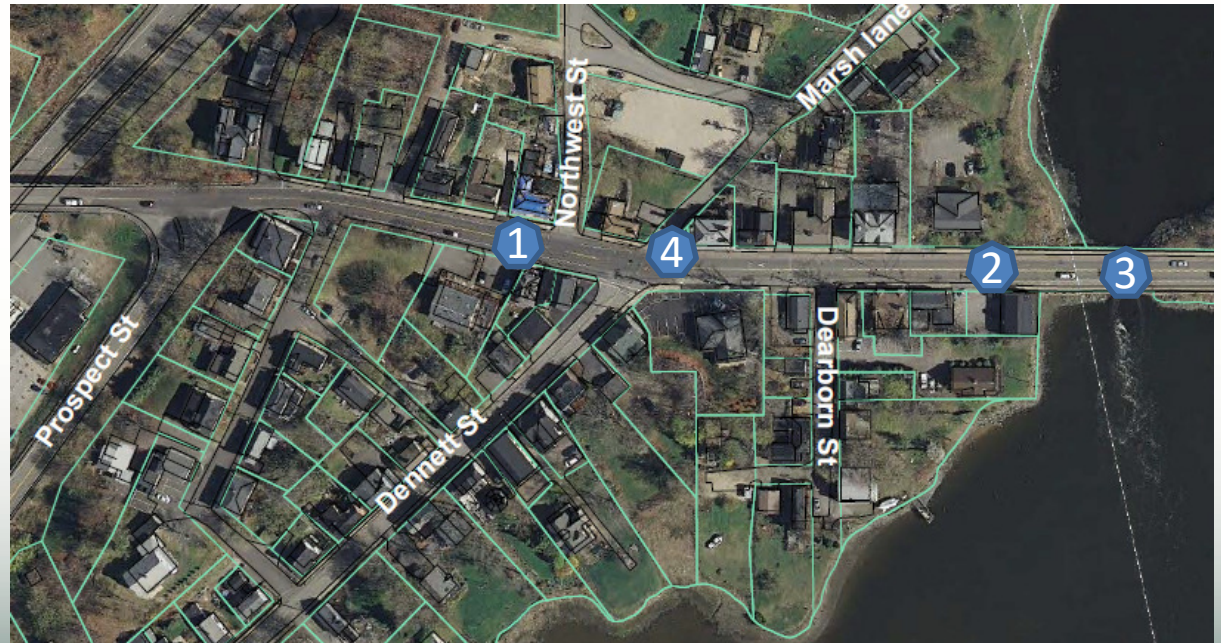
Existing Conditions: Woodbury to I-95



Existing Conditions: I-95 to Rt 1-Bypass

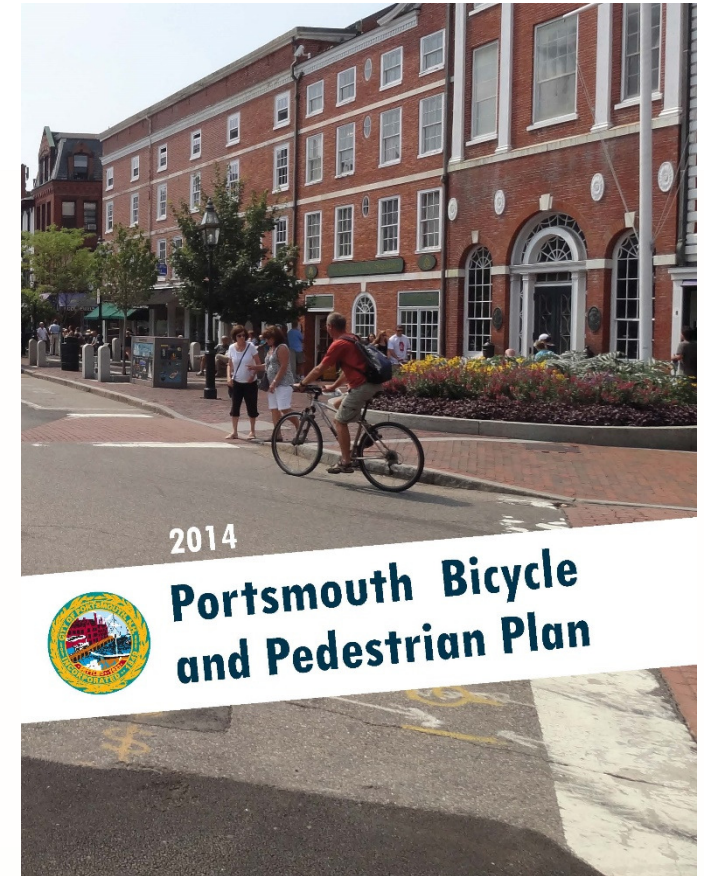


Existing Conditions: Rt 1-Bypass to North Mill Pond



Design Objectives:

- Work with Previous City Studies
 - Utilities
 - 2013 Water Master Plan
 - 2014 Bicycle & Pedestrian Plan
 - Complete Streets
 - City Council Policy
- Work with Stakeholders
- Conceptual/Prelim/Final Design
- Construction Estimating



“Complete Streets” means streets that are designed and operated to enable safe access for all users, so that pedestrians, bicyclists, motorists, and public transportation users of all ages and abilities are able to safely move along and across a street.

-City's 2013 Complete Street Policy

Pedestrian Plan



- Sidewalk One Side of Maplewood Ave to Dennett St
(Exception...Both Sides Between Central & Cutts)
- ADA Crosswalks
- Intersection Geometry

PROPOSED PEDESTRIAN IMPROVEMENTS

- Shared-Use Path
- Sidepath
- Add Sidewalk 2-Sides
- Add Sidewalk 1-Side
- Reconstruct Sidewalk
- Widen Sidewalk
- Shared Street
- Pedestrian Street



Pedestrian Plan (cont'd)



- ADA Crosswalks
- Intersection Geometry



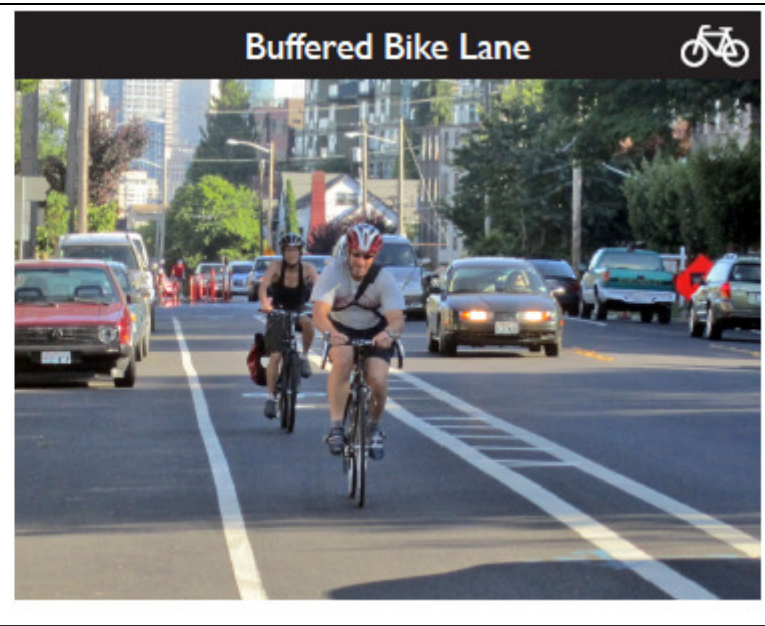
Bicycle Plan



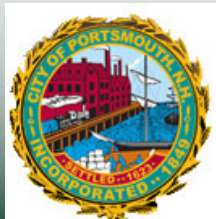
- Bike Lanes
- Buffered Bike Lanes
- Signed Routes



Bicycle Plan (cont'd)

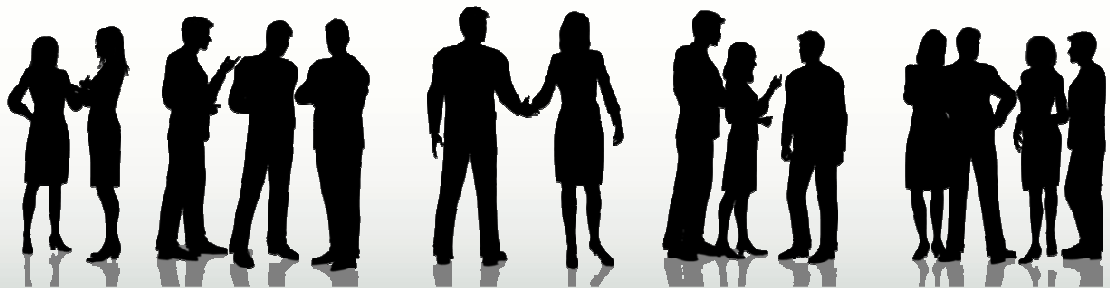


-Photos taken from Portsmouth Bicycle and Pedestrian Plan.



Public Input/Group Discussion:

- Break into Small Groups
 - What do we Need to Know?
 - What are the Issues?
 - What are the Concerns?
 - What would you Like to See?
- 20 Minute Discussion
- Reconvene



Next Steps

- Public Written Comments
 - Tonight
 - ...Or within 10 days
- Meeting Notes
- Comments and Responses
- Subsurface Exploration
- Maplewood Site Walk on December 19th
- Traffic Counts/Parking Study – Tentative January
- Concept Development
- Second Public Meeting



Keeping in Touch



- **Project Website:**
 - Link to be Provided via Email Distribution
- **City Staff Contact:**
 - Raymond C. Pezzullo, P.E.
 - Phone: 603-766-1755
 - Email: rcpezzullo@cityofportsmouth.com
- **Email Distributions**

