

Wetland Buffer Restoration Examples

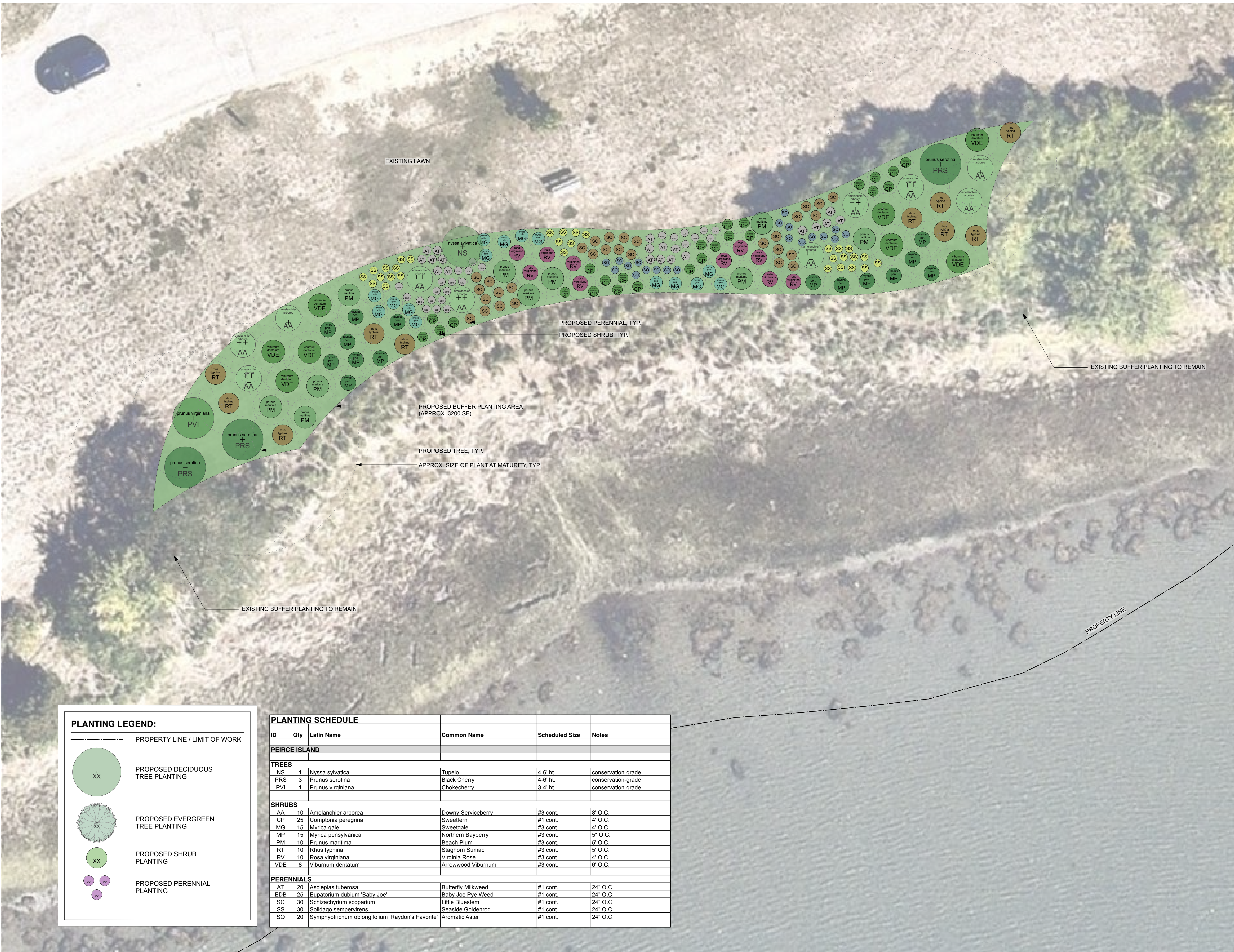
City of Portsmouth
1 Junkins Ave
Portsmouth, NH 03801

General Notes:

- Existing conditions from aerial imagery and GIS data provided by City of Portsmouth, NH on March 4, 2026.
- Existing conditions supplemented from data collected by: Matthew Cunningham Landscape Design LLC, 411 Main Street, Stoneham, MA 02108 / 366 Fore Street, Portland, ME 04101 - Tel: (617) 905.2246

Planting Notes:

- The contractor shall supply all plant material in quantities sufficient to complete the planting shown on all drawings.
- All plant material shall conform to the guidelines established by "The American Standard for Nursery Stock" published by The American Association of Nurserymen, latest edition.
- All plant material shall be warranted for 1 year after substantial completion.
- All plants shall be balled and burlap unless otherwise noted on the plant list/schedule.
- All plants shall be approved by Landscape Designer prior to their installation at the site.
- Contractor shall stake all plant locations in the field. Obtain approval of Landscape Designer before starting plant installations.
- Plants to be transplanted shall be flagged and exact planting locations staked in the field.
- All areas disturbed by construction shall be restored to a pre-construction state unless otherwise noted by landscape architect or plans.



PLANTING LEGEND:

----- PROPERTY LINE / LIMIT OF WORK

XX PROPOSED DECIDUOUS TREE PLANTING

XX PROPOSED EVERGREEN TREE PLANTING

XX PROPOSED SHRUB PLANTING

XX XX PROPOSED PERENNIAL PLANTING

ID	Qty	Latin Name	Common Name	Scheduled Size	Notes
PEIRCE ISLAND					
TREES					
NS	1	Nyssa sylvatica	Tupelo	4-6' ht.	conservation-grade
PRS	3	Prunus serotina	Black Cherry	4-6' ht.	conservation-grade
PVI	1	Prunus virginiana	Chokecherry	3-4' ht.	conservation-grade
SHRUBS					
AA	10	Amelanchier arborea	Downy Serviceberry	#3 cont.	8' O.C.
CP	25	Comptonia peregrina	Sweetfern	#1 cont.	4' O.C.
MG	15	Myrica gale	Sweetgale	#3 cont.	4' O.C.
MP	15	Myrica pensylvanica	Northern Bayberry	#3 cont.	5' O.C.
PM	10	Prunus maritima	Beach Plum	#3 cont.	#3 cont.
RT	10	Rhus typhina	Staghorn Sumac	#3 cont.	5' O.C.
RV	10	Rosa virginiana	Virginia Rose	#3 cont.	4' O.C.
VDE	8	Viburnum dentatum	Arrowwood Viburnum	#3 cont.	6' O.C.
PERENNIALS					
AT	20	Asclepias tuberosa	Butterfly Milkweed	#1 cont.	24" O.C.
EDB	25	Eupatorium dubium 'Baby Joe'	Baby Joe Pye Weed	#1 cont.	24" O.C.
SC	30	Schizachyrium scoparium	Little Bluestem	#1 cont.	24" O.C.
SS	30	Solidago sempervirens	Seaside Goldenrod	#1 cont.	24" O.C.
SO	20	Symphyotrichum oblongifolium 'Raydon's Favorite'	Aromatic Aster	#1 cont.	24" O.C.

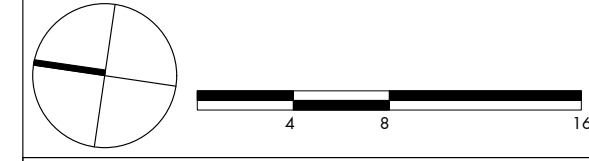
MATTHEW
CUNNINGHAM
LANDSCAPE
DESIGN LLC
matthew-cunningham.com

411 Main Street, Stoneham, MA 02180
366 Fore Street, Portland, ME 04101
617.905.2246 p | 617.321.4014 f

REVISIONS:

#	DATE	DESCRIPTION

SCALE: 1/8" = 1'-0" DATE: 19 May 2026



SHEET TITLE:

Planting Plan - Peirce Island

SHEET NUMBER:

L1.1

NOT FOR CONSTRUCTION