

Wetland Buffer Restoration Examples

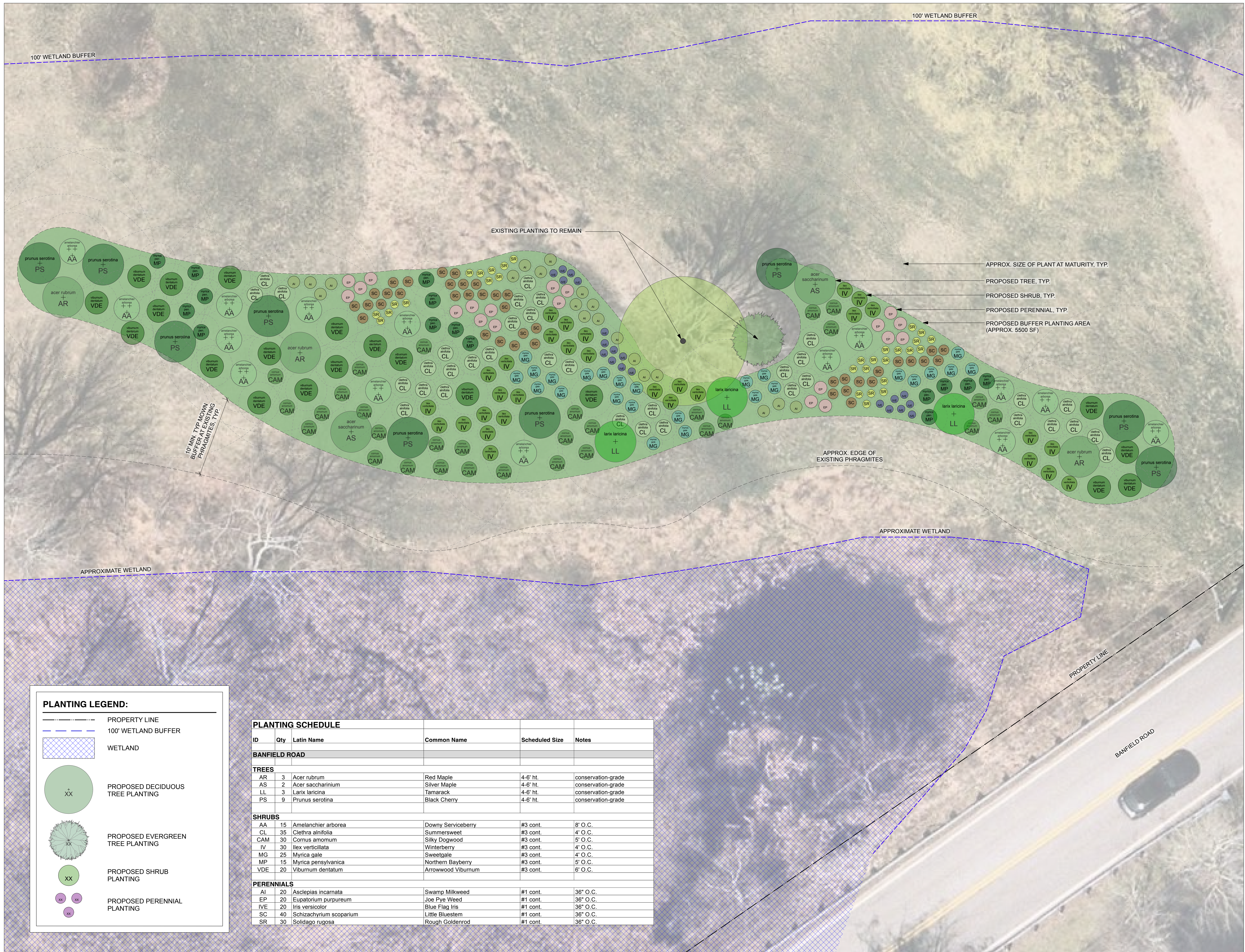
City of Portsmouth
1 Junkins Ave
Portsmouth, NH 03801

General Notes:

- Existing conditions from aerial imagery and GIS data provided by City of Portsmouth, NH on March 4, 2026.
- Existing conditions supplemented from data collected by: Matthew Cunningham Landscape Design LLC, 411 Main Street, Stoneham, MA 02108 / 366 Fore Street, Portland, ME 04101 - Tel: (617) 905.2246

Planting Notes:

- The contractor shall supply all plant material in quantities sufficient to complete the planting shown on all drawings.
- All plant material shall conform to the guidelines established by "The American Standard for Nursery Stock" published by The American Association of Nurserymen, latest edition.
- All plant material shall be warranted for 1 year after substantial completion.
- All plants shall be balled and burlap unless otherwise noted on the plant list/schedule.
- All plants shall be approved by Landscape Designer prior to their installation at the site.
- Contractor shall stake all plant locations in the field. Obtain approval of Landscape Designer before starting plant installations.
- Plants to be transplanted shall be flagged and exact planting locations staked in the field.
- All areas disturbed by construction shall be restored to a pre-construction state unless otherwise noted by landscape architect or plans.



APPROX. SIZE OF PLANT AT MATURITY, TYP.
PROPOSED TREE, TYP.
PROPOSED SHRUB, TYP.
PROPOSED PERENNIAL, TYP.
PROPOSED BUFFER PLANTING AREA (APPROX. 5500 SF)

PLANTING LEGEND:

- PROPERTY LINE
- 100' WETLAND BUFFER
- WETLAND
- PROPOSED DECIDUOUS TREE PLANTING
- PROPOSED EVERGREEN TREE PLANTING
- PROPOSED SHRUB PLANTING
- PROPOSED PERENNIAL PLANTING

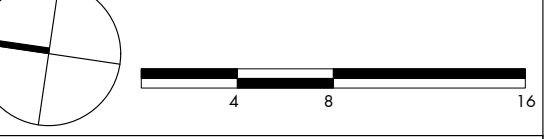
ID	Qty	Latin Name	Common Name	Scheduled Size	Notes
BANFIELD ROAD					
TREES					
AR	3	Acer rubrum	Red Maple	4-6' ht.	conservation-grade
AS	2	Acer saccharinum	Silver Maple	4-6' ht.	conservation-grade
LL	3	Larix laricina	Tamarack	4-6' ht.	conservation-grade
PS	9	Prunus serotina	Black Cherry	4-6' ht.	conservation-grade
SHRUBS					
AA	15	Amelanchier arborea	Downy Serviceberry	#3 cont.	8' O.C.
CL	35	Clethra alnifolia	Summersweet	#3 cont.	4' O.C.
CAM	30	Cornus amomum	Silky Dogwood	#3 cont.	5' O.C.
IV	30	Ilex verticillata	Winterberry	#3 cont.	4' O.C.
MG	25	Myrica gale	Sweetgale	#3 cont.	4' O.C.
MP	15	Myrica pensylvanica	Northern Bayberry	#3 cont.	5' O.C.
VDE	20	Viburnum dentatum	Arrowwood Viburnum	#3 cont.	6' O.C.
PERENNIALS					
AI	20	Asclepias incarnata	Swamp Milkweed	#1 cont.	36" O.C.
EP	20	Eupatorium purpureum	Joe Pye Weed	#1 cont.	36" O.C.
IVE	20	Iris versicolor	Blue Flag Iris	#1 cont.	36" O.C.
SC	40	Schizachyrium scoparium	Little Bluestem	#1 cont.	36" O.C.
SR	30	Solidago rugosa	Rough Goldenrod	#1 cont.	36" O.C.

MATTHEW CUNNINGHAM LANDSCAPE DESIGN LLC
matthew-cunningham.com

411 Main Street, Stoneham, MA 02180
366 Fore Street, Portland, ME 04101
617.905.2246 p | 617.321.4014 f

#	DATE	DESCRIPTION

SCALE: 1/8" = 1'-0" DATE: 19 May 2026



SHEET TITLE:

Planting Plan - Banfield Road

SHEET NUMBER:

L1.2

NOT FOR CONSTRUCTION